

Data Path : Z:\pestpcbsrv\HPCHEM1\ECD_O\Data\P0090919\
 Data File : P0060586.D
 Signal(s) : Signal #1: ECD1A.CH Signal #2: ECD2B.CH
 Acq On : 10 Sep 2019 00:02
 Operator : SM/AJ
 Sample : AR1660CCC500
 Misc :
 ALS Vial : 3 Sample Multiplier: 1

Instrument :
 ECD_O
ClientSampleId :
 AR1660CCC500

Integration File signal 1: autoint1.e
 Integration File signal 2: autoint2.e
 Quant Time: Sep 10 07:32:48 2019
 Quant Method : Z:\pestpcbsrv\HPCHEM1\ECD_O\methods\P0090719.M
 Quant Title : GC EXTRACTABLES
 QLast Update : Sun Sep 08 02:12:04 2019
 Response via : Initial Calibration
 Integrator: ChemStation 6890 Scale Mode: Small noise peaks clipped

Volume Inj. : 2 µl
 Signal #1 Phase : ZB-MR1 Signal #2 Phase: ZB-MR2
 Signal #1 Info : 30Mx0.32mmx 0.50µ Signal #2 Info : 30M x 0.32mm x 0.25µm

Compound	RT#1	RT#2	Resp#1	Resp#2	ng/ml	ng/ml

System Monitoring Compounds						
1) SA Tetrachlo...	4.367	3.533	1967708	1538818	47.423	50.100
2) SA Decachlor...	10.025	8.420	2276919	1773944	43.164	47.921
Target Compounds						
3) L1 AR-1016-1	5.530	4.590	834791	650055	513.074	517.664
4) L1 AR-1016-2	5.552	4.608	1236338	897195	527.217	513.473
5) L1 AR-1016-3	5.614	4.779	770150	513037	529.035	539.526
6) L1 AR-1016-4	5.713	4.821	634943	431412	516.451	523.456
7) L1 AR-1016-5	6.005	5.027	662865	553342	537.396	520.790
31) L7 AR-1260-1	7.126	6.039	1279552	1057288	511.881	514.143
32) L7 AR-1260-2	7.382	6.224	1559637	1276739	501.906	509.926
33) L7 AR-1260-3	7.740	6.375	1214357	1184536	485.469	509.850
34) L7 AR-1260-4	7.964	6.840	1402697	1035349	473.762	509.760
35) L7 AR-1260-5	8.277	7.078	2623400	2280337	467.062	497.802

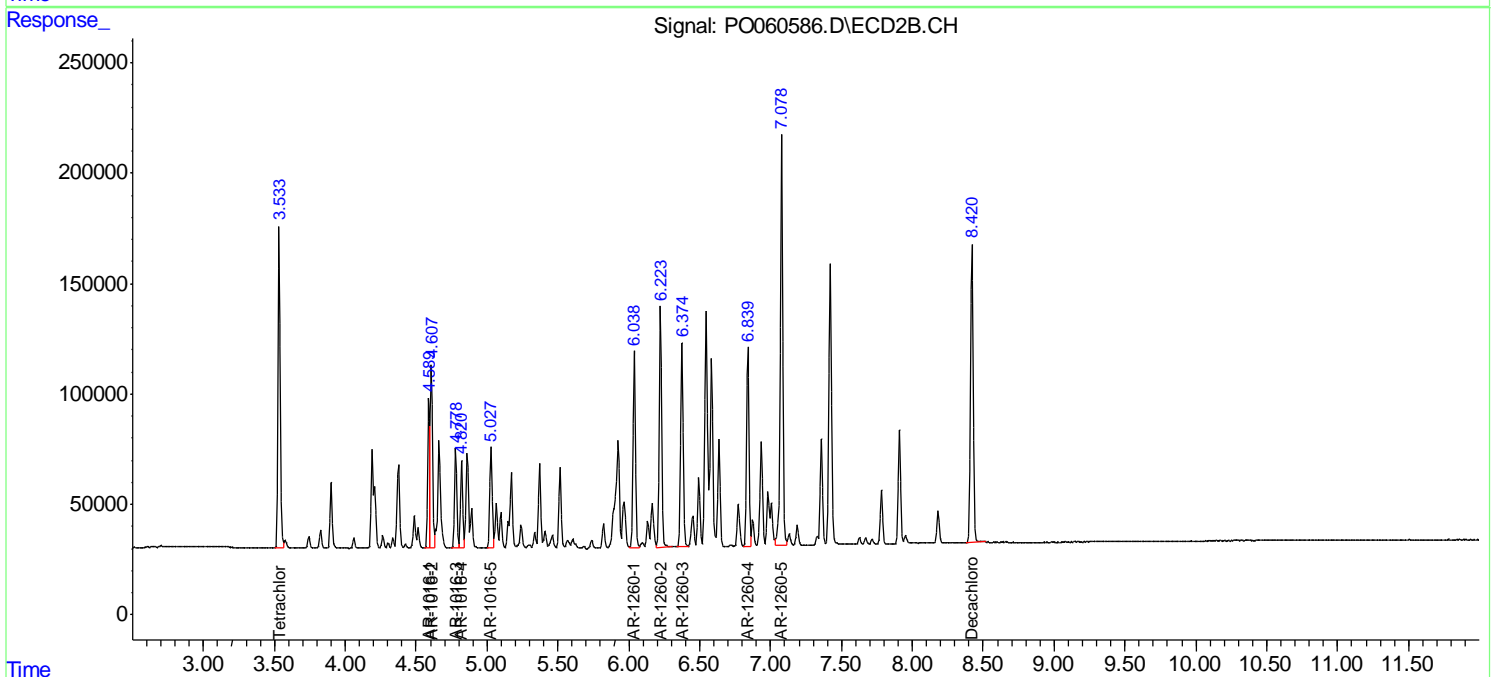
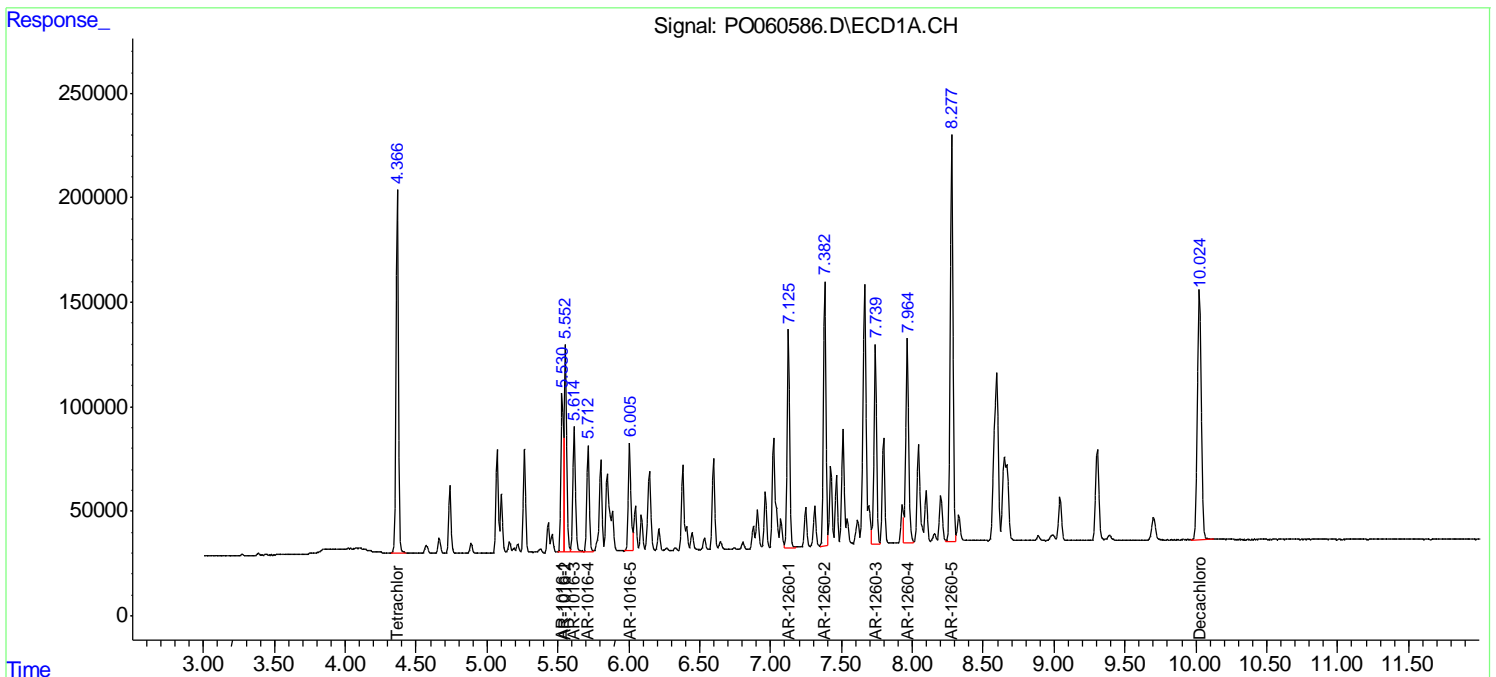
(f)=RT Delta > 1/2 Window (#)=Amounts differ by > 25% (m)=manual int.

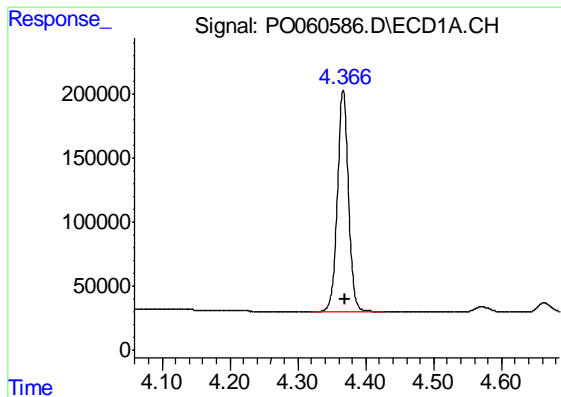
Data Path : Z:\pestpcbsrv\HPCHEM1\ECD_O\Data\PO090919\
 Data File : PO060586.D
 Signal(s) : Signal #1: ECD1A.CH Signal #2: ECD2B.CH
 Acq On : 10 Sep 2019 00:02
 Operator : SM/AJ
 Sample : AR1660CCC500
 Misc :
 ALS Vial : 3 Sample Multiplier: 1

Instrument :
 ECD_O
 ClientSampled :
 AR1660CCC500

Integration File signal 1: autoint1.e
 Integration File signal 2: autoint2.e
 Quant Time: Sep 10 07:32:48 2019
 Quant Method : Z:\pestpcbsrv\HPCHEM1\ECD_O\methods\PO090719.M
 Quant Title : GC EXTRACTABLES
 QLast Update : Sun Sep 08 02:12:04 2019
 Response via : Initial Calibration
 Integrator: ChemStation 6890 Scale Mode: Small noise peaks clipped

Volume Inj. : 2 µl
 Signal #1 Phase : ZB-MR1 Signal #2 Phase: ZB-MR2
 Signal #1 Info : 30Mx0.32mmx 0.50µ Signal #2 Info : 30M x 0.32mm x 0.25µm

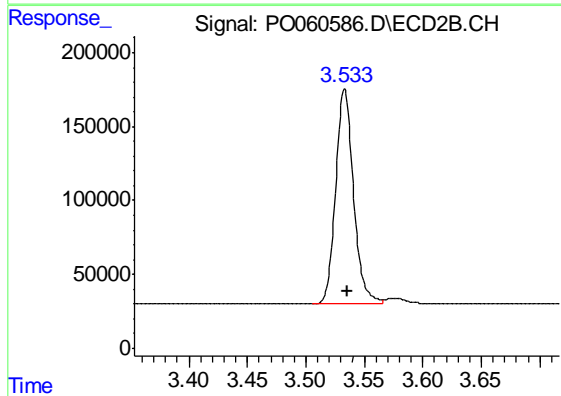




#1 Tetrachloro-m-xylene

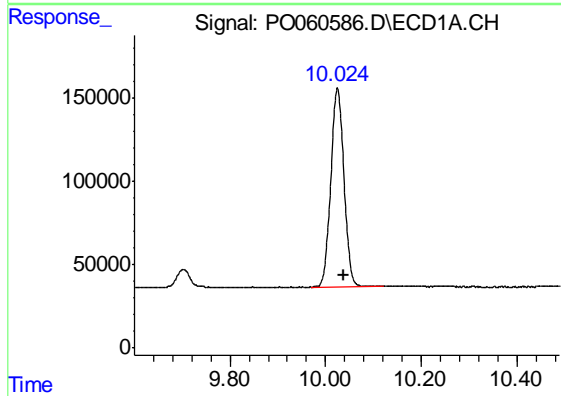
R.T.: 4.367 min
 Delta R.T.: -0.002 min
 Response: 1967708
 Conc: 47.42 ng/ml

Instrument :
 ECD_O
 ClientSampleId :
 AR1660CCC500



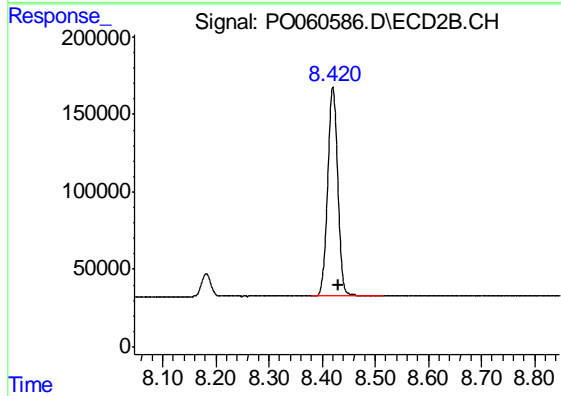
#1 Tetrachloro-m-xylene

R.T.: 3.533 min
 Delta R.T.: -0.003 min
 Response: 1538818
 Conc: 50.10 ng/ml



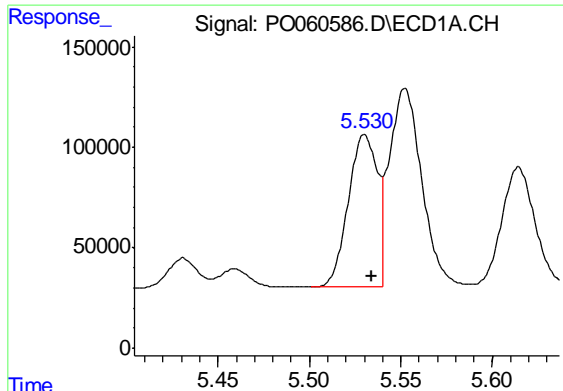
#2 Decachlorobiphenyl

R.T.: 10.025 min
 Delta R.T.: -0.012 min
 Response: 2276919
 Conc: 43.16 ng/ml



#2 Decachlorobiphenyl

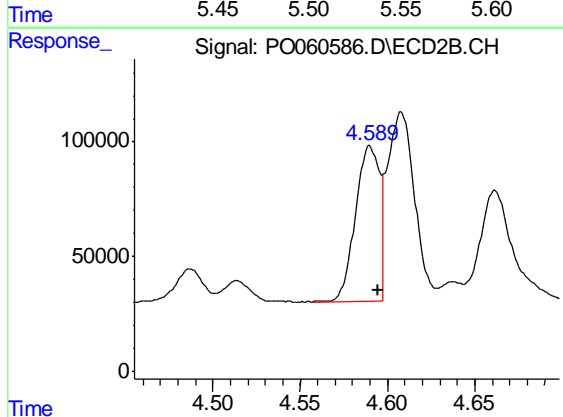
R.T.: 8.420 min
 Delta R.T.: -0.011 min
 Response: 1773944
 Conc: 47.92 ng/ml



#3 AR-1016-1

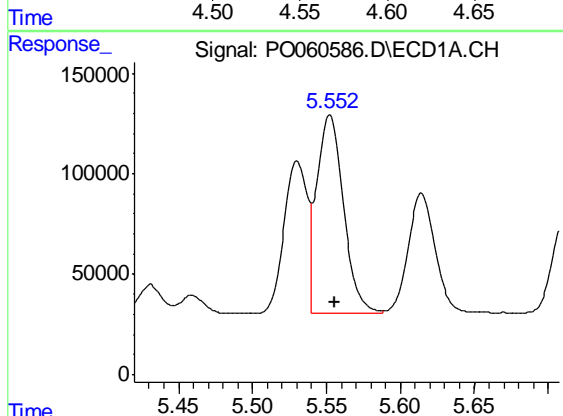
R.T.: 5.530 min
 Delta R.T.: -0.004 min
 Response: 834791
 Conc: 513.07 ng/ml

Instrument :
 ECD_O
 ClientSampleId :
 AR1660CCC500



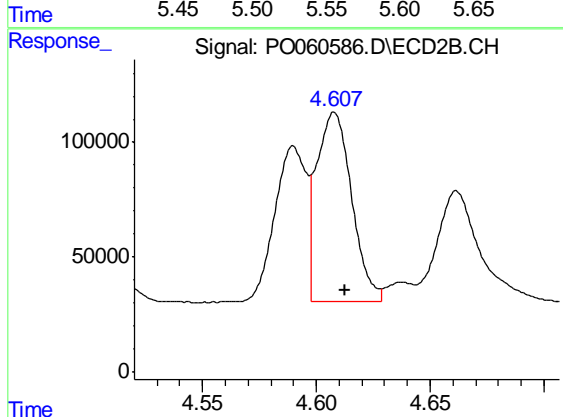
#3 AR-1016-1

R.T.: 4.590 min
 Delta R.T.: -0.005 min
 Response: 650055
 Conc: 517.66 ng/ml



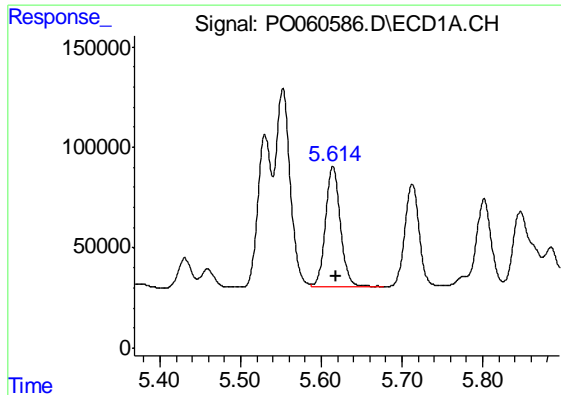
#4 AR-1016-2

R.T.: 5.552 min
 Delta R.T.: -0.004 min
 Response: 1236338
 Conc: 527.22 ng/ml



#4 AR-1016-2

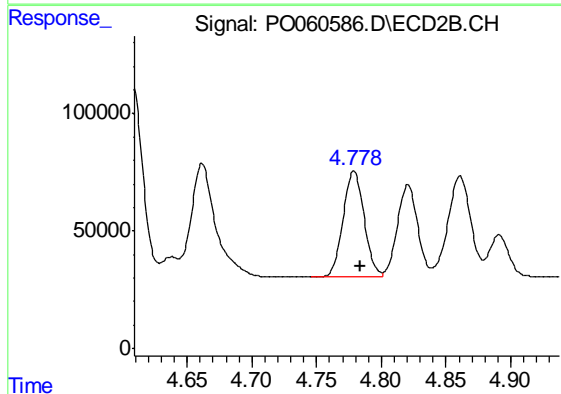
R.T.: 4.608 min
 Delta R.T.: -0.005 min
 Response: 897195
 Conc: 513.47 ng/ml



#5 AR-1016-3

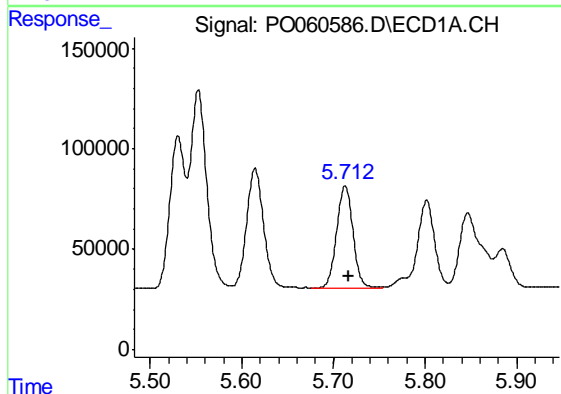
R.T.: 5.614 min
Delta R.T.: -0.004 min
Response: 770150
Conc: 529.04 ng/ml

Instrument :
ECD_O
ClientSampleId :
AR1660CCC500



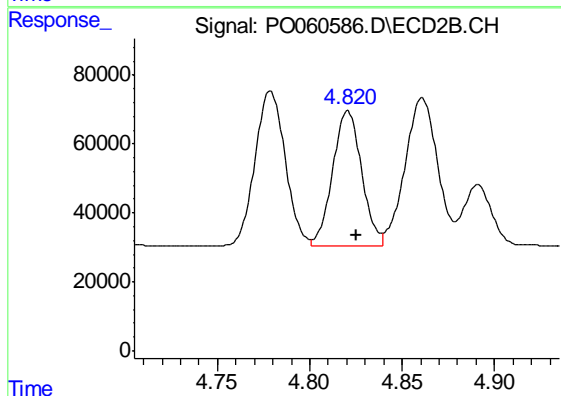
#5 AR-1016-3

R.T.: 4.779 min
Delta R.T.: -0.005 min
Response: 513037
Conc: 539.53 ng/ml



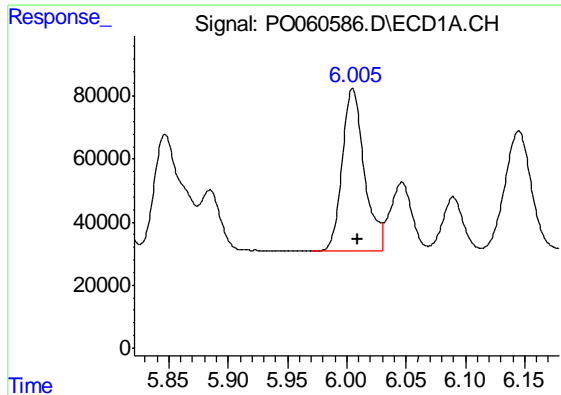
#6 AR-1016-4

R.T.: 5.713 min
Delta R.T.: -0.004 min
Response: 634943
Conc: 516.45 ng/ml



#6 AR-1016-4

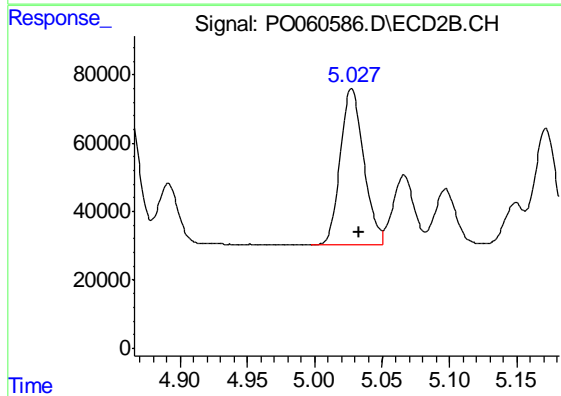
R.T.: 4.821 min
Delta R.T.: -0.005 min
Response: 431412
Conc: 523.46 ng/ml



#7 AR-1016-5

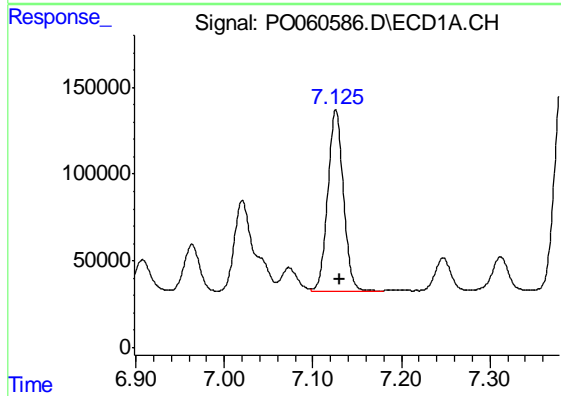
R.T.: 6.005 min
Delta R.T.: -0.005 min
Response: 662865
Conc: 537.40 ng/ml

Instrument :
ECD_O
ClientSampleId :
AR1660CCC500



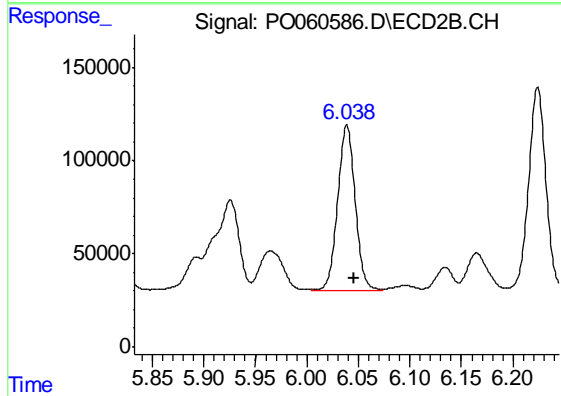
#7 AR-1016-5

R.T.: 5.027 min
Delta R.T.: -0.006 min
Response: 553342
Conc: 520.79 ng/ml



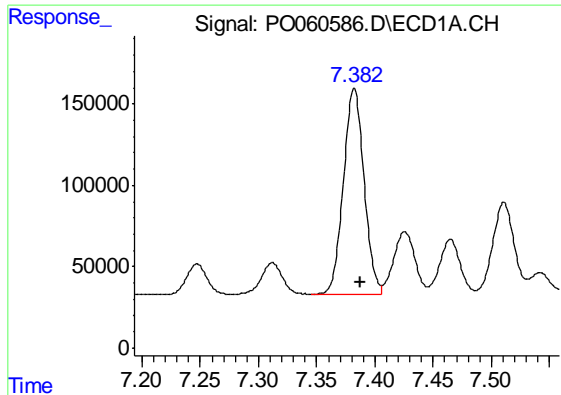
#31 AR-1260-1

R.T.: 7.126 min
Delta R.T.: -0.005 min
Response: 1279552
Conc: 511.88 ng/ml



#31 AR-1260-1

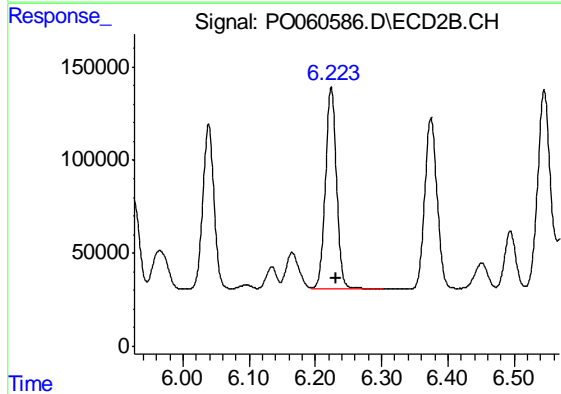
R.T.: 6.039 min
Delta R.T.: -0.007 min
Response: 1057288
Conc: 514.14 ng/ml



#32 AR-1260-2

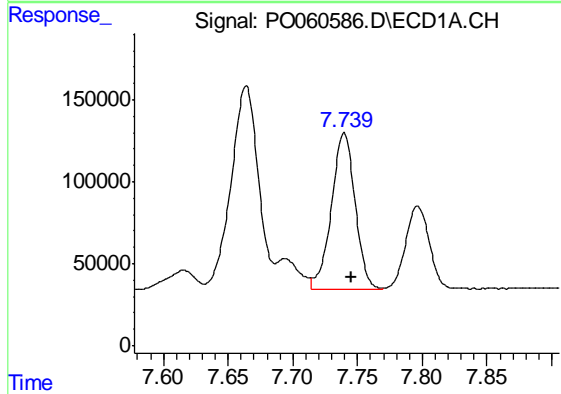
R.T.: 7.382 min
Delta R.T.: -0.006 min
Response: 1559637
Conc: 501.91 ng/ml

Instrument :
ECD_O
ClientSampleId :
AR1660CCC500



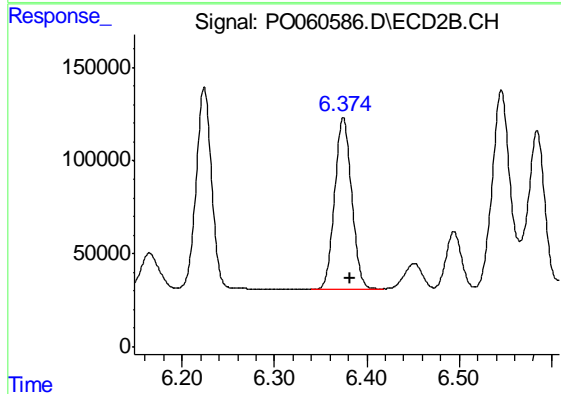
#32 AR-1260-2

R.T.: 6.224 min
Delta R.T.: -0.007 min
Response: 1276739
Conc: 509.93 ng/ml



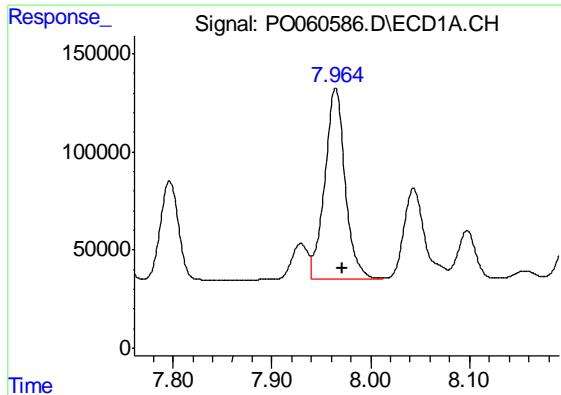
#33 AR-1260-3

R.T.: 7.740 min
Delta R.T.: -0.006 min
Response: 1214357
Conc: 485.47 ng/ml



#33 AR-1260-3

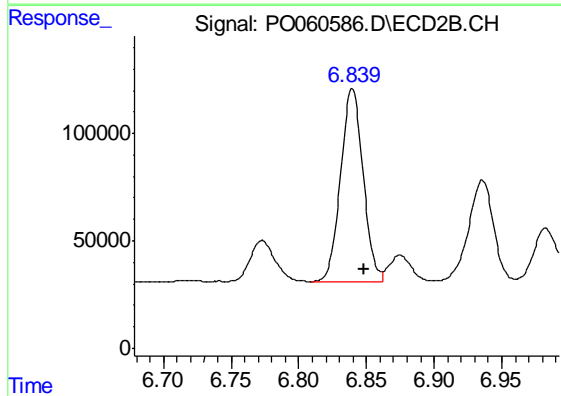
R.T.: 6.375 min
Delta R.T.: -0.007 min
Response: 1184536
Conc: 509.85 ng/ml



#34 AR-1260-4

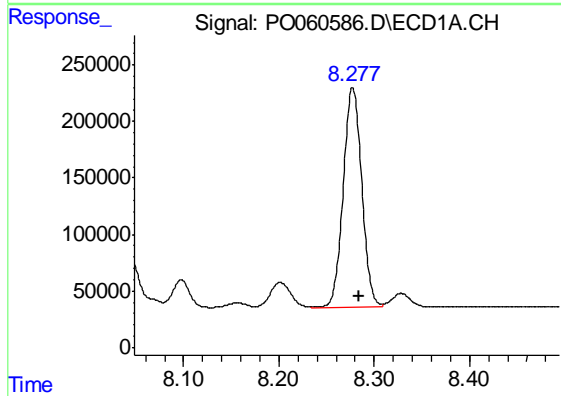
R.T.: 7.964 min
Delta R.T.: -0.006 min
Response: 1402697
Conc: 473.76 ng/ml

Instrument :
ECD_O
ClientSampleId :
AR1660CCC500



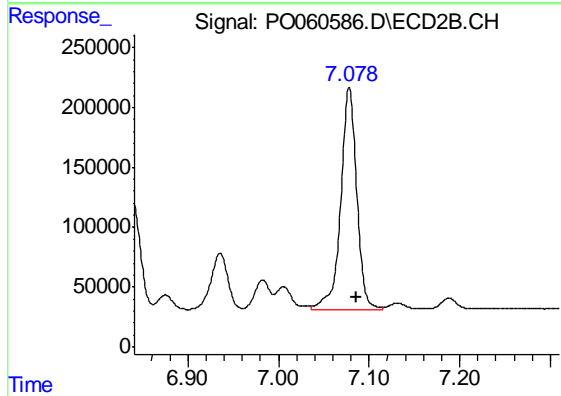
#34 AR-1260-4

R.T.: 6.840 min
Delta R.T.: -0.009 min
Response: 1035349
Conc: 509.76 ng/ml



#35 AR-1260-5

R.T.: 8.277 min
Delta R.T.: -0.007 min
Response: 2623400
Conc: 467.06 ng/ml



#35 AR-1260-5

R.T.: 7.078 min
Delta R.T.: -0.008 min
Response: 2280337
Conc: 497.80 ng/ml