

Data Path : Z:\pestpcbsrv\HPCHEM1\ECD\_0\Data\P0090920\  
 Data File : P0071237.D  
 Signal(s) : Signal #1: ECD1A.CH Signal #2: ECD2B.CH  
 Acq On : 09 Sep 2020 12:07  
 Operator : DD\AJ  
 Sample : AR1660ICC1000  
 Misc :  
 ALS Vial : 3 Sample Multiplier: 1

Instrument :  
 ECD\_0  
 ClientSampleId :  
 AR1660ICC1000

Integration File signal 1: autoint1.e  
 Integration File signal 2: autoint2.e  
 Quant Time: Sep 09 14:16:39 2020  
 Quant Method : Z:\pestpcbsrv\HPCHEM1\ECD\_0\methods\P0090920.M  
 Quant Title : GC EXTRACTABLES  
 QLast Update : Wed Sep 09 14:16:01 2020  
 Response via : Initial Calibration  
 Integrator: ChemStation 6890 Scale Mode: Small noise peaks clipped

Volume Inj. : 2 µl  
 Signal #1 Phase : ZB-MR2 Signal #2 Phase: ZB-MR2  
 Signal #1 Info : 30Mx0.32mmx 0.50µ Signal #2 Info : 30M x 0.32mm x 0.25µm

Compound	RT#1	RT#2	Resp#1	Resp#2	ng/ml	ng/ml
-----						
System Monitoring Compounds						
1) SA Tetrachlo...	4.345	3.529	7059691	3708297	100.385	95.724
2) SA Decachlor...	9.959	8.710	8858177	5136009	95.438	95.165
Target Compounds						
3) L1 AR-1016-1	5.648	4.754	2852782	1514786	981.500	913.199
4) L1 AR-1016-2	5.671	4.771	4169461	2181121	989.540	924.255
5) L1 AR-1016-3	5.733	4.956	2438320	1115614	989.685	917.000
6) L1 AR-1016-4	5.839	5.013	2061011	946815	974.477	880.490
7) L1 AR-1016-5	6.148	5.234	2005001	1212052	986.331	910.799
31) L7 AR-1260-1	7.305	6.314	4304883	2435573	971.461	919.635
32) L7 AR-1260-2	7.571	6.515	6842704	3238258	989.726	932.509
33) L7 AR-1260-3	7.928	6.662	5730470	2913128	961.812	937.030
34) L7 AR-1260-4	8.155	7.138	5388573	2610266	954.258	934.154
35) L7 AR-1260-5	8.470	7.390	12389542	7178256	974.895	962.375

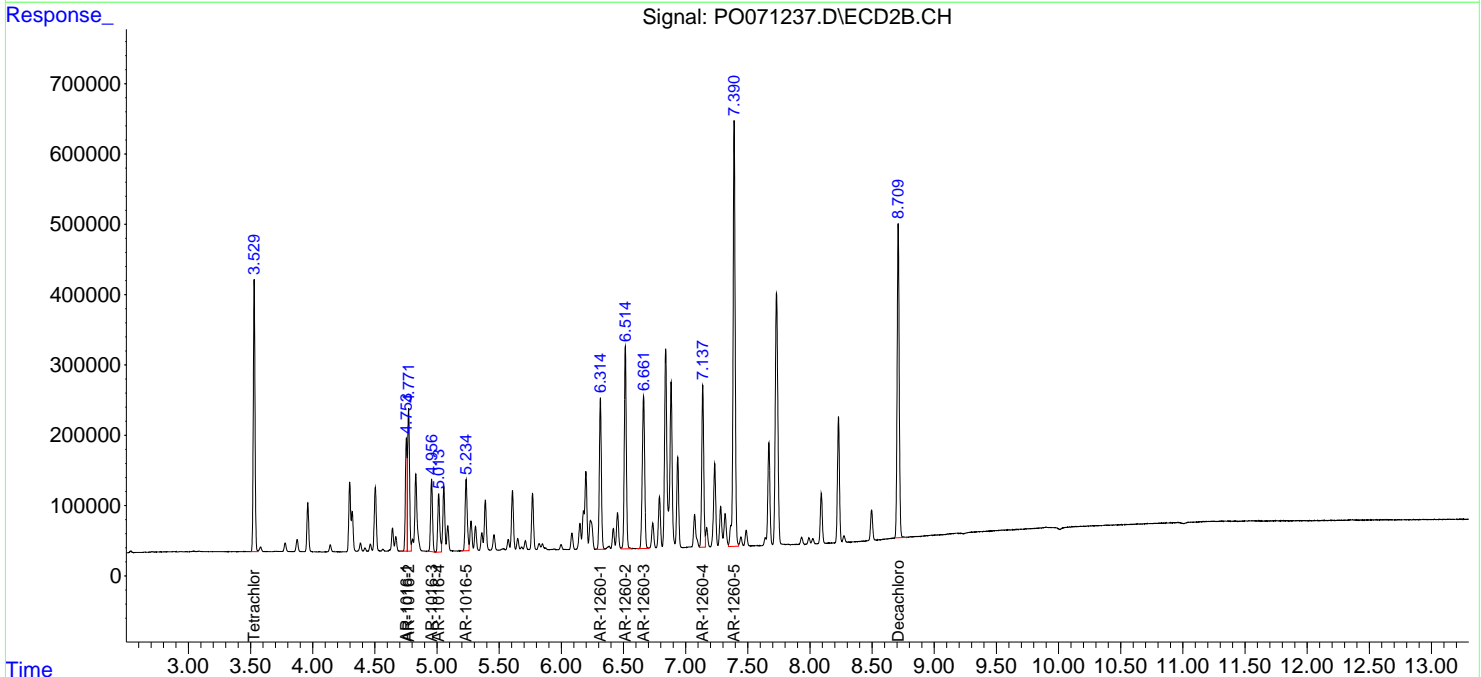
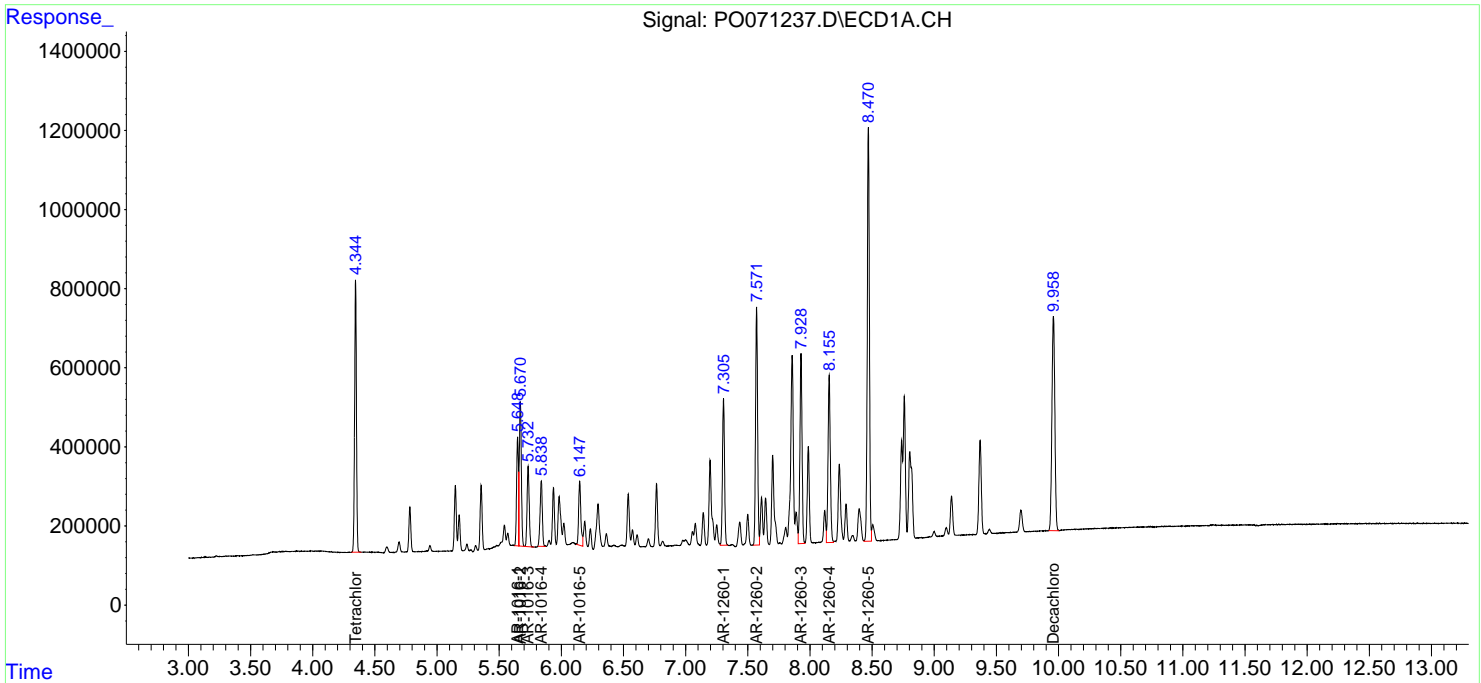
(f)=RT Delta > 1/2 Window (#)=Amounts differ by > 25% (m)=manual int.

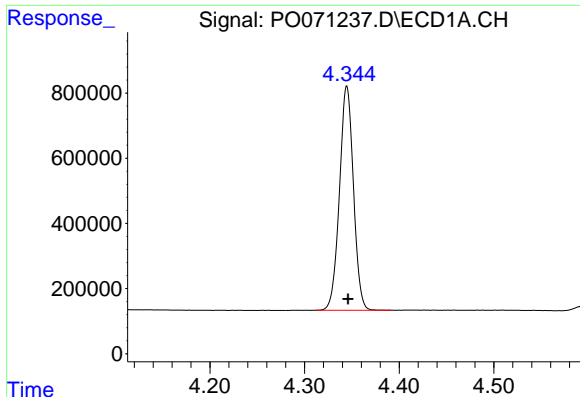
Data Path : Z:\pestpcbsrv\HPCHEM1\ECD\_O\Data\P0090920\  
 Data File : P0071237.D  
 Signal(s) : Signal #1: ECD1A.CH Signal #2: ECD2B.CH  
 Acq On : 09 Sep 2020 12:07  
 Operator : DD\AJ  
 Sample : AR1660ICC1000  
 Misc :  
 ALS Vial : 3 Sample Multiplier: 1

**Instrument :**  
 ECD\_O  
**Client Sampled :**  
 AR1660ICC1000

Integration File signal 1: autoint1.e  
 Integration File signal 2: autoint2.e  
 Quant Time: Sep 09 14:16:39 2020  
 Quant Method : Z:\pestpcbsrv\HPCHEM1\ECD\_O\methods\P0090920.M  
 Quant Title : GC EXTRACTABLES  
 QLast Update : Wed Sep 09 14:16:01 2020  
 Response via : Initial Calibration  
 Integrator: ChemStation 6890 Scale Mode: Small noise peaks clipped

Volume Inj. : 2 µl  
 Signal #1 Phase : ZB-MR1 Signal #2 Phase: ZB-MR2  
 Signal #1 Info : 30Mx0.32mmx 0.50µ Signal #2 Info : 30M x 0.32mm x 0.25µm

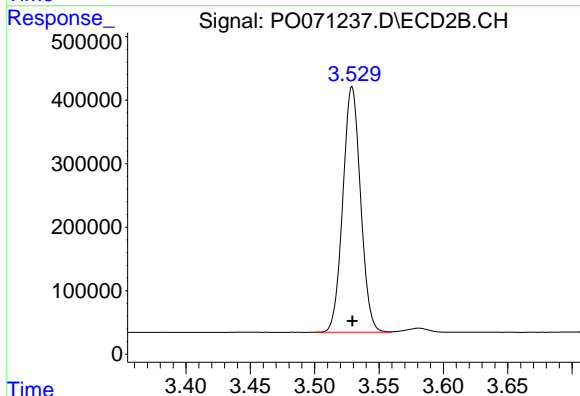




#1 Tetrachloro-m-xylene

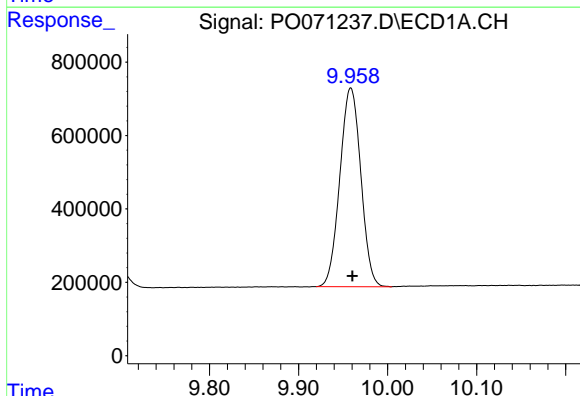
R.T.: 4.345 min  
 Delta R.T.: -0.001 min  
 Response: 7059691  
 Conc: 100.38 ng/ml

Instrument :  
 ECD\_O  
 ClientSampleId :  
 AR1660ICC1000



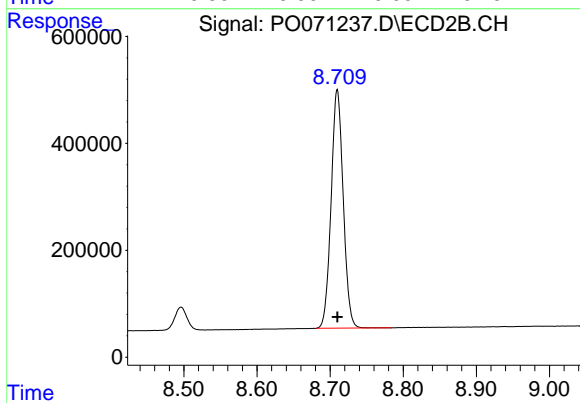
#1 Tetrachloro-m-xylene

R.T.: 3.529 min  
 Delta R.T.: 0.000 min  
 Response: 3708297  
 Conc: 95.72 ng/ml



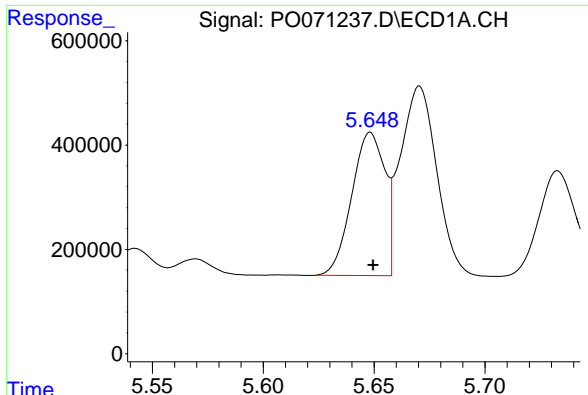
#2 Decachlorobiphenyl

R.T.: 9.959 min  
 Delta R.T.: -0.002 min  
 Response: 8858177  
 Conc: 95.44 ng/ml



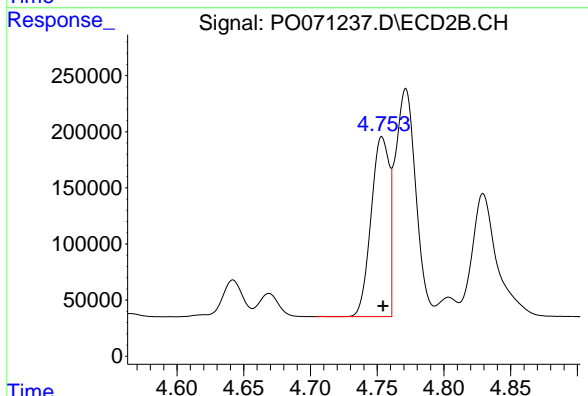
#2 Decachlorobiphenyl

R.T.: 8.710 min  
 Delta R.T.: 0.000 min  
 Response: 5136009  
 Conc: 95.17 ng/ml

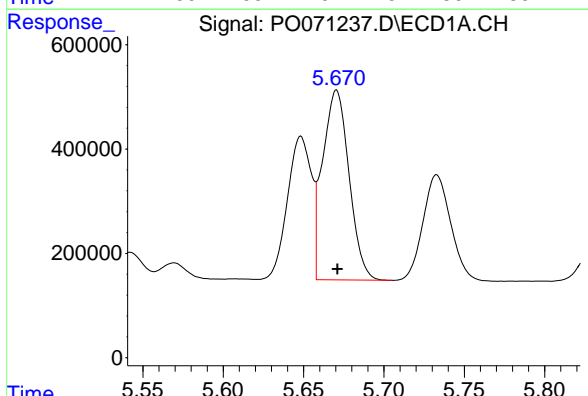


#3 AR-1016-1  
 R.T.: 5.648 min  
 Delta R.T.: -0.001 min  
 Response: 2852782  
 Conc: 981.50 ng/ml

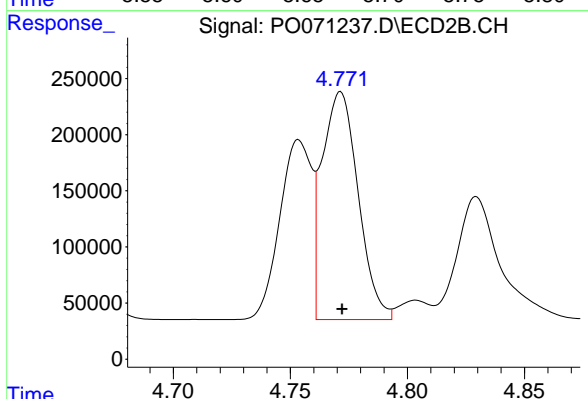
Instrument :  
 ECD\_O  
 ClientSampled :  
 AR1660ICC1000



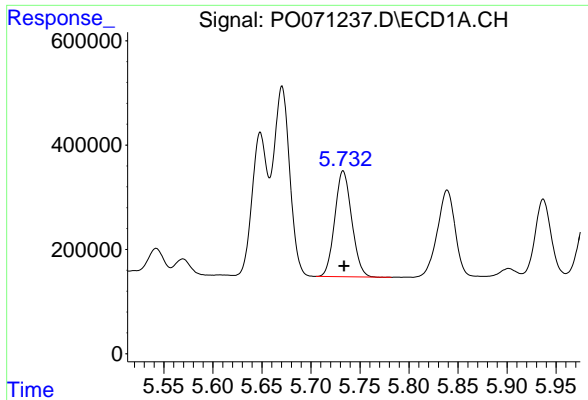
#3 AR-1016-1  
 R.T.: 4.754 min  
 Delta R.T.: 0.000 min  
 Response: 1514786  
 Conc: 913.20 ng/ml



#4 AR-1016-2  
 R.T.: 5.671 min  
 Delta R.T.: 0.000 min  
 Response: 4169461  
 Conc: 989.54 ng/ml

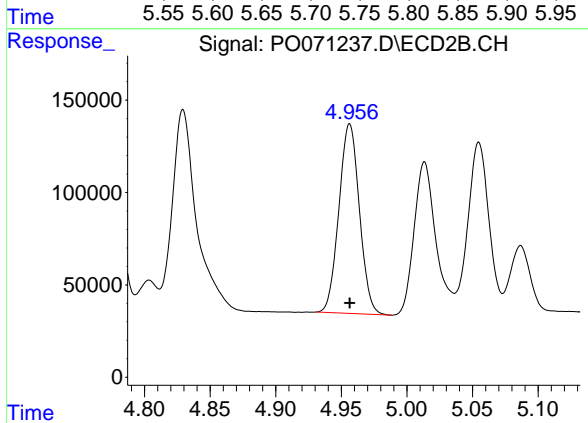


#4 AR-1016-2  
 R.T.: 4.771 min  
 Delta R.T.: 0.000 min  
 Response: 2181121  
 Conc: 924.25 ng/ml

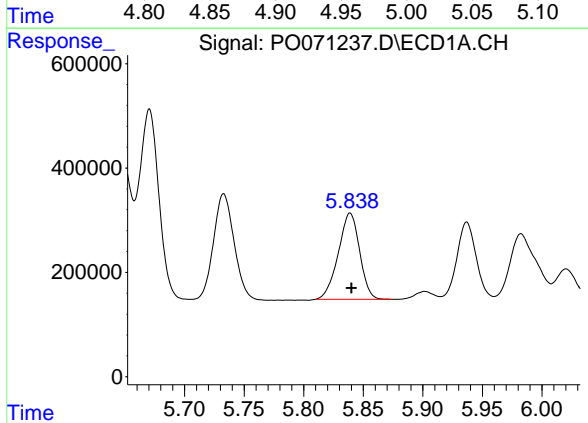


#5 AR-1016-3  
 R.T.: 5.733 min  
 Delta R.T.: 0.000 min  
 Response: 2438320  
 Conc: 989.69 ng/ml

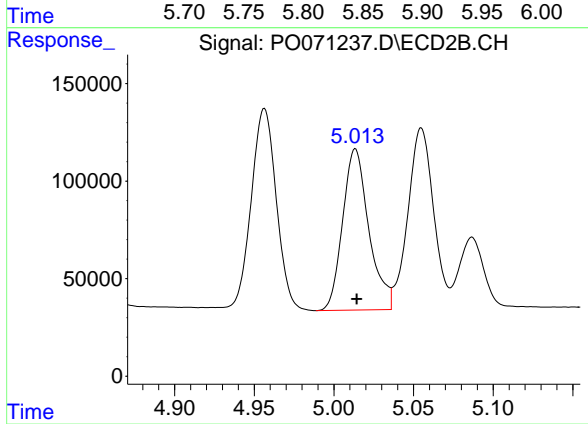
**Instrument :**  
 ECD\_O  
**ClientSampleId :**  
 AR1660ICC1000



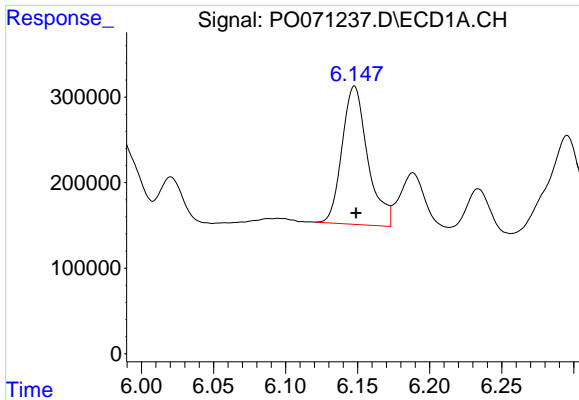
#5 AR-1016-3  
 R.T.: 4.956 min  
 Delta R.T.: 0.000 min  
 Response: 1115614  
 Conc: 917.00 ng/ml



#6 AR-1016-4  
 R.T.: 5.839 min  
 Delta R.T.: -0.001 min  
 Response: 2061011  
 Conc: 974.48 ng/ml



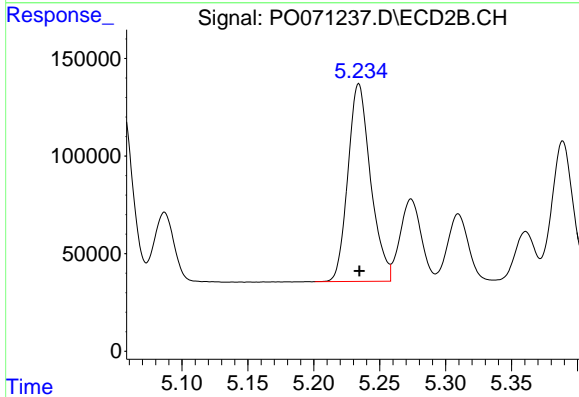
#6 AR-1016-4  
 R.T.: 5.013 min  
 Delta R.T.: 0.000 min  
 Response: 946815  
 Conc: 880.49 ng/ml



#7 AR-1016-5

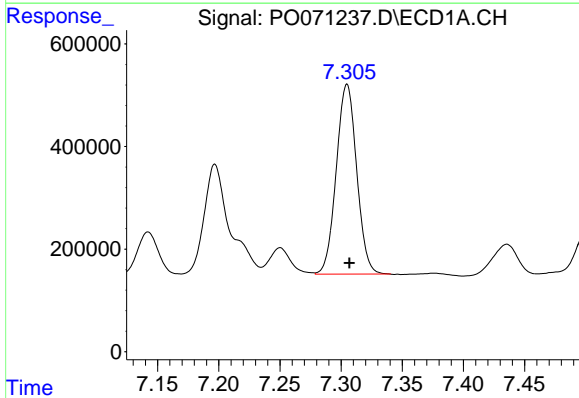
R.T.: 6.148 min  
 Delta R.T.: -0.001 min  
 Response: 2005001  
 Conc: 986.33 ng/ml

**Instrument :**  
 ECD\_O  
**ClientSampled :**  
 AR1660ICC1000



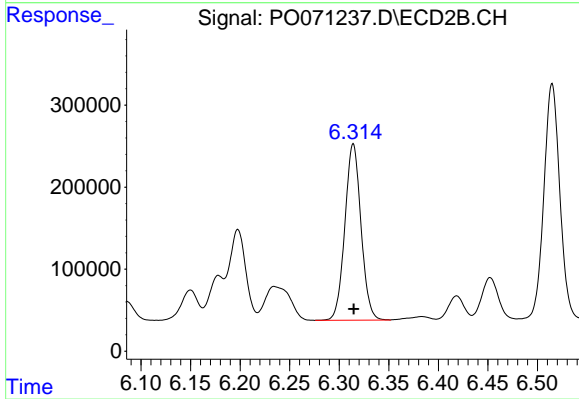
#7 AR-1016-5

R.T.: 5.234 min  
 Delta R.T.: 0.000 min  
 Response: 1212052  
 Conc: 910.80 ng/ml



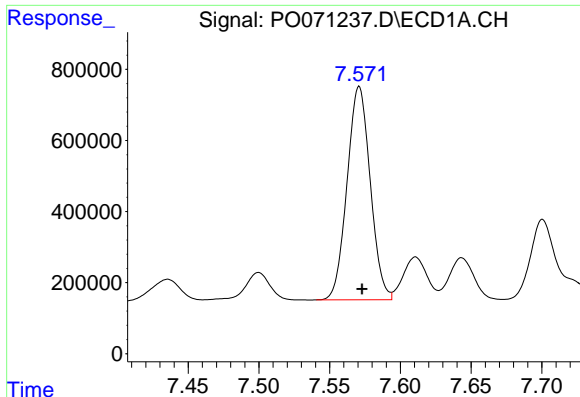
#31 AR-1260-1

R.T.: 7.305 min  
 Delta R.T.: -0.002 min  
 Response: 4304883  
 Conc: 971.46 ng/ml



#31 AR-1260-1

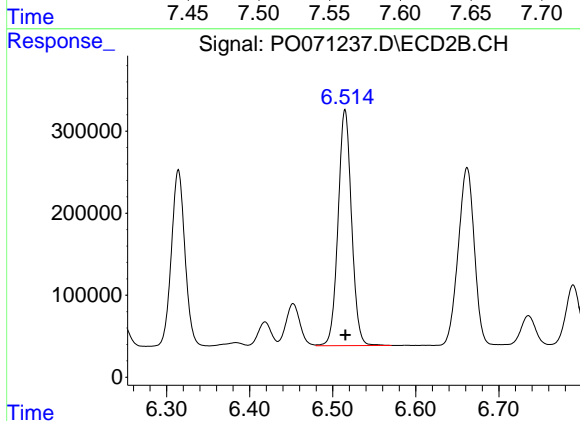
R.T.: 6.314 min  
 Delta R.T.: 0.000 min  
 Response: 2435573  
 Conc: 919.64 ng/ml



#32 AR-1260-2

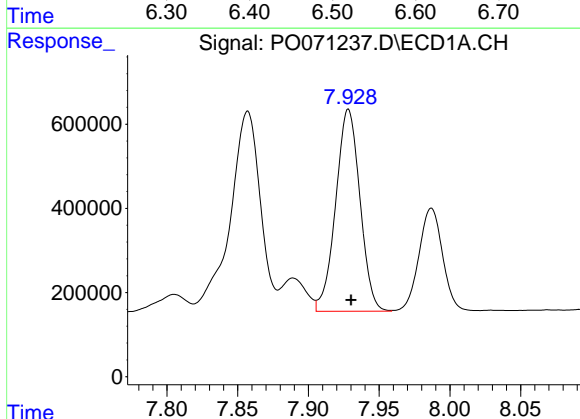
R.T.: 7.571 min  
Delta R.T.: -0.002 min  
Response: 6842704  
Conc: 989.73 ng/ml

Instrument :  
ECD\_O  
ClientSampled :  
AR1660ICC1000



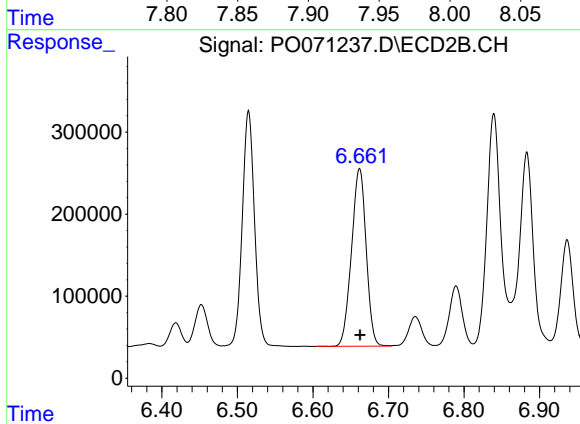
#32 AR-1260-2

R.T.: 6.515 min  
Delta R.T.: 0.000 min  
Response: 3238258  
Conc: 932.51 ng/ml



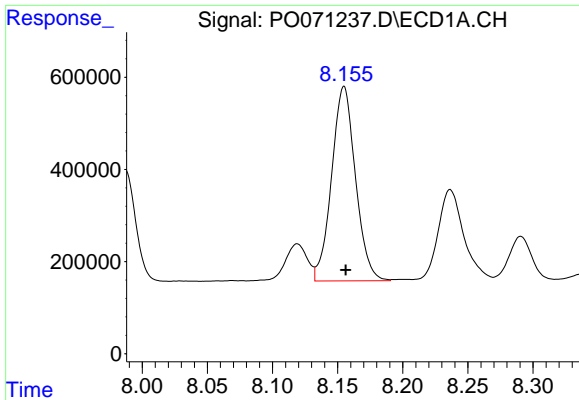
#33 AR-1260-3

R.T.: 7.928 min  
Delta R.T.: -0.002 min  
Response: 5730470  
Conc: 961.81 ng/ml



#33 AR-1260-3

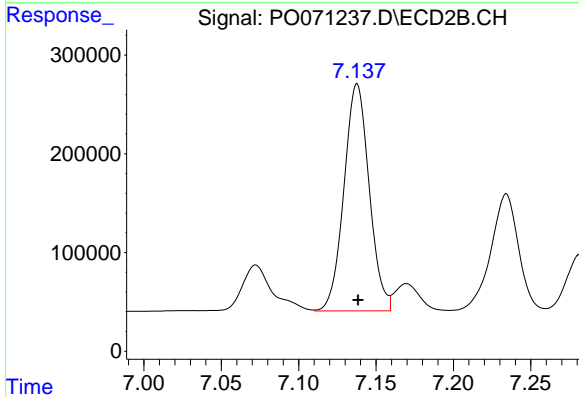
R.T.: 6.662 min  
Delta R.T.: 0.000 min  
Response: 2913128  
Conc: 937.03 ng/ml



#34 AR-1260-4

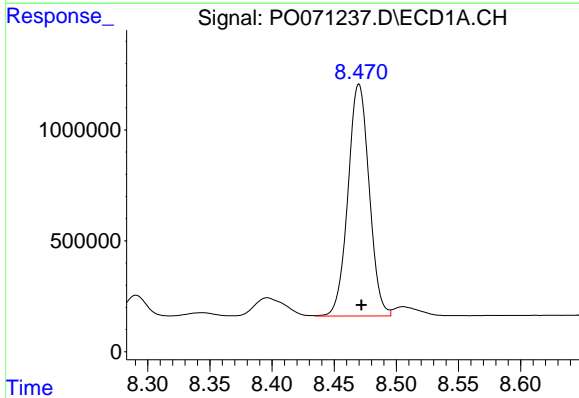
R.T.: 8.155 min  
 Delta R.T.: -0.001 min  
 Response: 5388573  
 Conc: 954.26 ng/ml

Instrument :  
 ECD\_O  
 ClientSampleId :  
 AR1660ICC1000



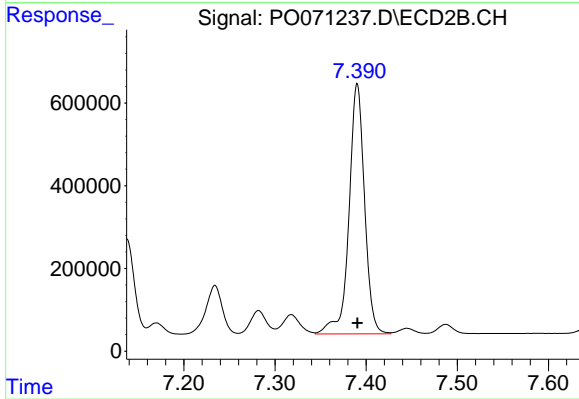
#34 AR-1260-4

R.T.: 7.138 min  
 Delta R.T.: 0.000 min  
 Response: 2610266  
 Conc: 934.15 ng/ml



#35 AR-1260-5

R.T.: 8.470 min  
 Delta R.T.: -0.002 min  
 Response: 12389542  
 Conc: 974.89 ng/ml



#35 AR-1260-5

R.T.: 7.390 min  
 Delta R.T.: 0.000 min  
 Response: 7178256  
 Conc: 962.38 ng/ml