

Data Path : Z:\pestpcbsrv\HPCHEM1\ECD_0\Data\P0091019\
 Data File : P0060638.D
 Signal(s) : Signal #1: ECD1A.CH Signal #2: ECD2B.CH
 Acq On : 10 Sep 2019 17:08
 Operator : SM/AJ
 Sample : K4764-05
 Misc :
 ALS Vial : 21 Sample Multiplier: 1

Instrument :
 ECD_0
 ClientSampleId :
 ROLL-OFF-COMPOSITE-2

Integration File signal 1: autoint1.e
 Integration File signal 2: autoint2.e
 Quant Time: Sep 11 02:58:52 2019
 Quant Method : Z:\pestpcbsrv\HPCHEM1\ECD_0\methods\P0090719.M
 Quant Title : GC EXTRACTABLES
 QLast Update : Sun Sep 08 02:12:04 2019
 Response via : Initial Calibration
 Integrator: ChemStation 6890 Scale Mode: Small noise peaks clipped

Volume Inj. : 2 µl
 Signal #1 Phase : ZB-MR1 Signal #2 Phase: ZB-MR2
 Signal #1 Info : 30Mx0.32mmx 0.50µ Signal #2 Info : 30M x 0.32mm x 0.25µm

Compound	RT#1	RT#2	Resp#1	Resp#2	ng/ml	ng/ml
----------	------	------	--------	--------	-------	-------

 System Monitoring Compounds

1) SA Tetrachlo...	4.376	3.532	924850	729836	22.290	23.762
2) SA Decachlor...	10.038	8.420	891364	678681	16.898	18.334

Target Compounds

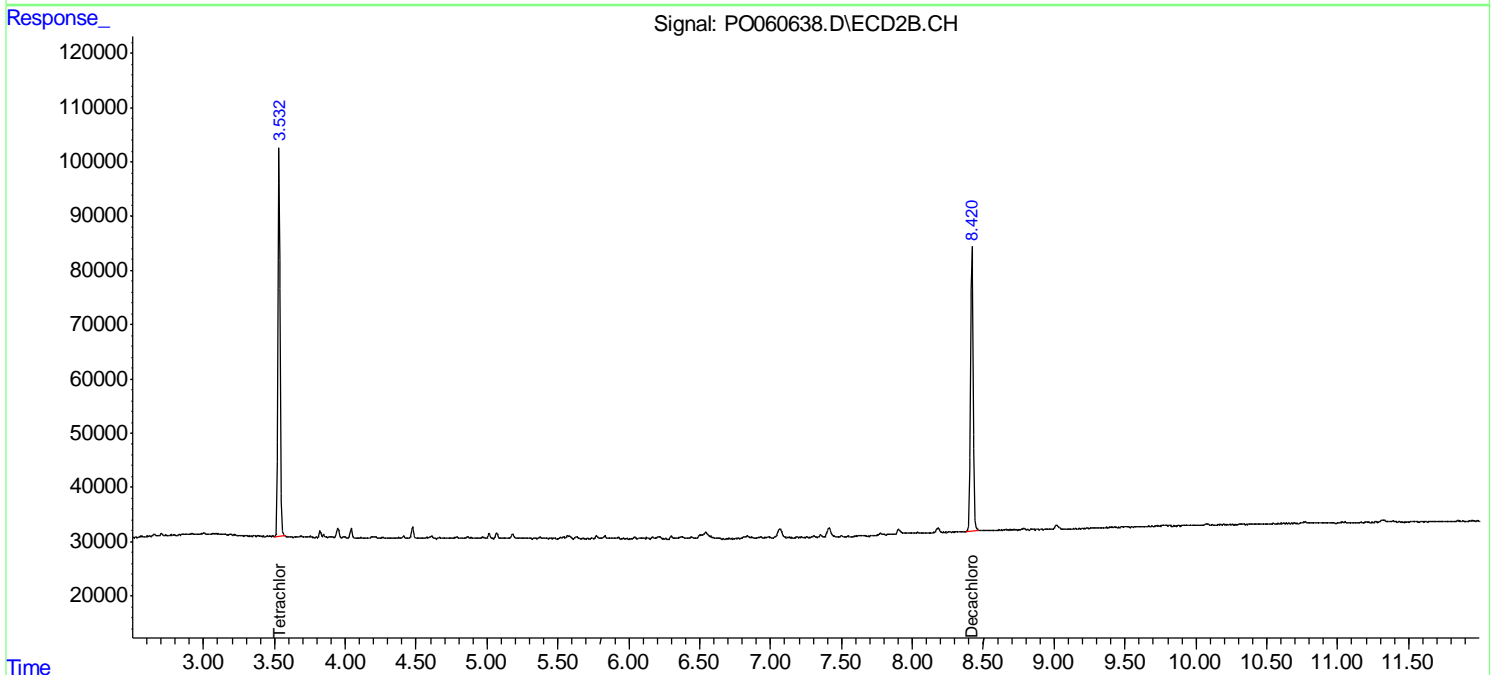
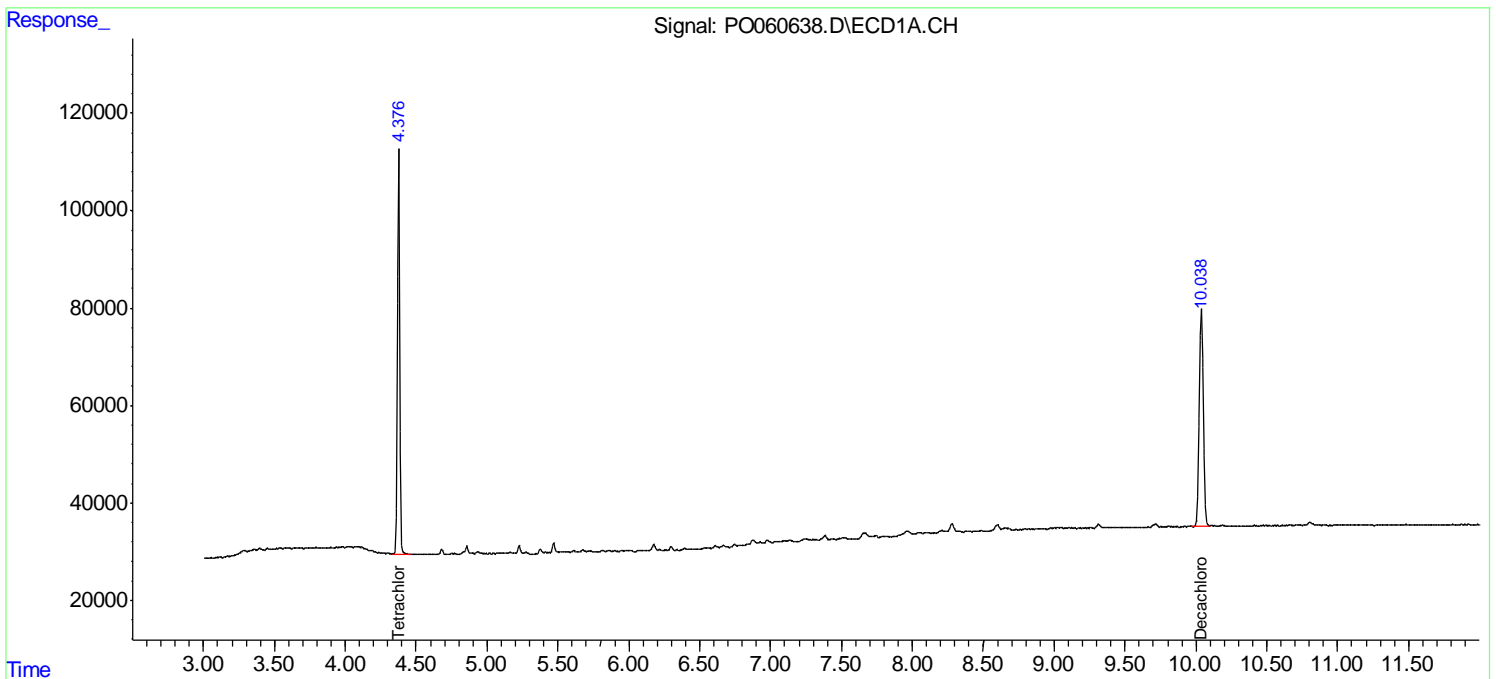
(f)=RT Delta > 1/2 Window (#)=Amounts differ by > 25% (m)=manual int.

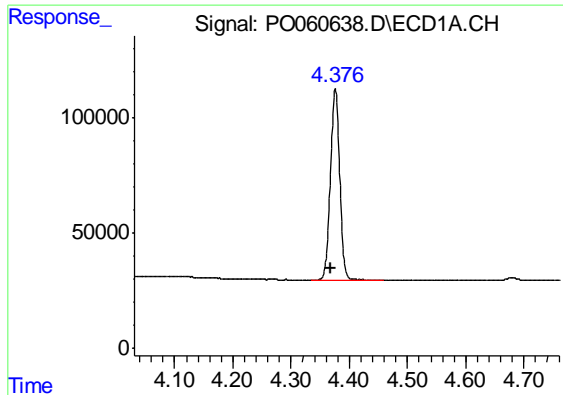
Data Path : Z:\pestpcbsrv\HPCHEM1\ECD_O\Data\P0091019\
 Data File : P0060638.D
 Signal(s) : Signal #1: ECD1A.CH Signal #2: ECD2B.CH
 Acq On : 10 Sep 2019 17:08
 Operator : SM/AJ
 Sample : K4764-05
 Misc :
 ALS Vial : 21 Sample Multiplier: 1

Instrument :
 ECD_O
ClientSampled :
 ROLL-OFF-COMPOSITE-2

Integration File signal 1: autoint1.e
 Integration File signal 2: autoint2.e
 Quant Time: Sep 11 02:58:52 2019
 Quant Method : Z:\pestpcbsrv\HPCHEM1\ECD_O\methods\P0090719.M
 Quant Title : GC EXTRACTABLES
 QLast Update : Sun Sep 08 02:12:04 2019
 Response via : Initial Calibration
 Integrator: ChemStation 6890 Scale Mode: Small noise peaks clipped

Volume Inj. : 2 µl
 Signal #1 Phase : ZB-MR1 Signal #2 Phase: ZB-MR2
 Signal #1 Info : 30Mx0.32mmx 0.50µ Signal #2 Info : 30M x 0.32mm x 0.25µm

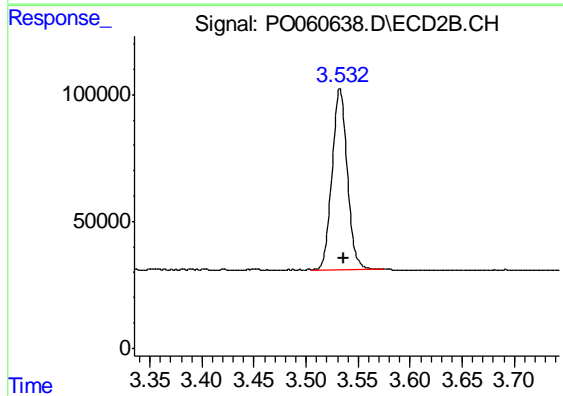




#1 Tetrachloro-m-xylene

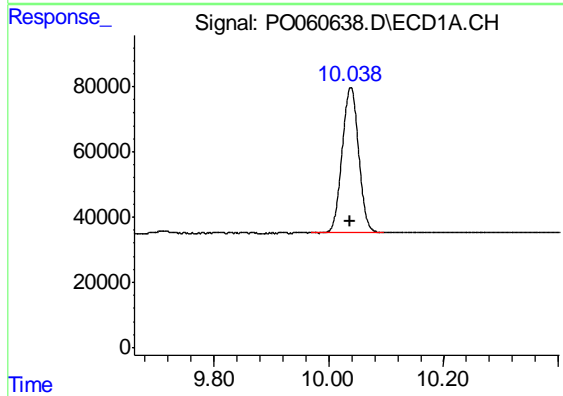
R.T.: 4.376 min
 Delta R.T.: 0.007 min
 Response: 924850
 Conc: 22.29 ng/ml

Instrument :
 ECD_O
 ClientSampleId :
 ROLL-OFF-COMPOSITE-2



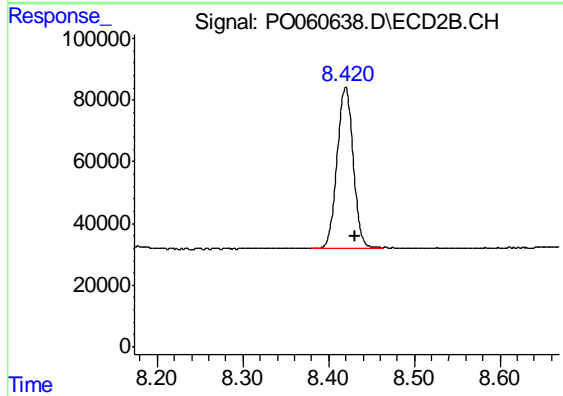
#1 Tetrachloro-m-xylene

R.T.: 3.532 min
 Delta R.T.: -0.004 min
 Response: 729836
 Conc: 23.76 ng/ml



#2 Decachlorobiphenyl

R.T.: 10.038 min
 Delta R.T.: 0.001 min
 Response: 891364
 Conc: 16.90 ng/ml



#2 Decachlorobiphenyl

R.T.: 8.420 min
 Delta R.T.: -0.011 min
 Response: 678681
 Conc: 18.33 ng/ml