

Data Path : Z:\pestpcbsrv\HPCHEM1\ECD_0\Data\P0091024\
 Data File : P0106410.D
 Signal(s) : Signal #1: ECD1A.ch Signal #2: ECD2B.ch
 Acq On : 11 Sep 2024 07:25
 Operator : YP/AJ
 Sample : I.BLK
 Misc :
 ALS Vial : 2 Sample Multiplier: 1

Instrument :
 ECD_0
 ClientSampleId :
 I.BLK

Integration File signal 1: autoint1.e
 Integration File signal 2: autoint2.e
 Quant Time: Sep 11 08:45:12 2024
 Quant Method : Z:\pestpcbsrv\HPCHEM1\ECD_0\methods\P0090924.M
 Quant Title : GC EXTRACTABLES
 QLast Update : Tue Sep 10 09:57:51 2024
 Response via : Initial Calibration
 Integrator: ChemStation

Volume Inj. : 2 µl
 Signal #1 Phase : ZB-MR1 Signal #2 Phase: ZB-MR2
 Signal #1 Info : 30Mx0.32mmx 0.50µ Signal #2 Info : 30M x 0.32mm x 0.25µm

Compound	RT#1	RT#2	Resp#1	Resp#2	ng/ml	ng/ml

System Monitoring Compounds						
1) SA Tetrachlo...	4.451	3.714	165.9E6	58793498	22.111	22.010
2) SA Decachlor...	10.191	8.738	109.9E6	47105900	22.238	23.550

Target Compounds

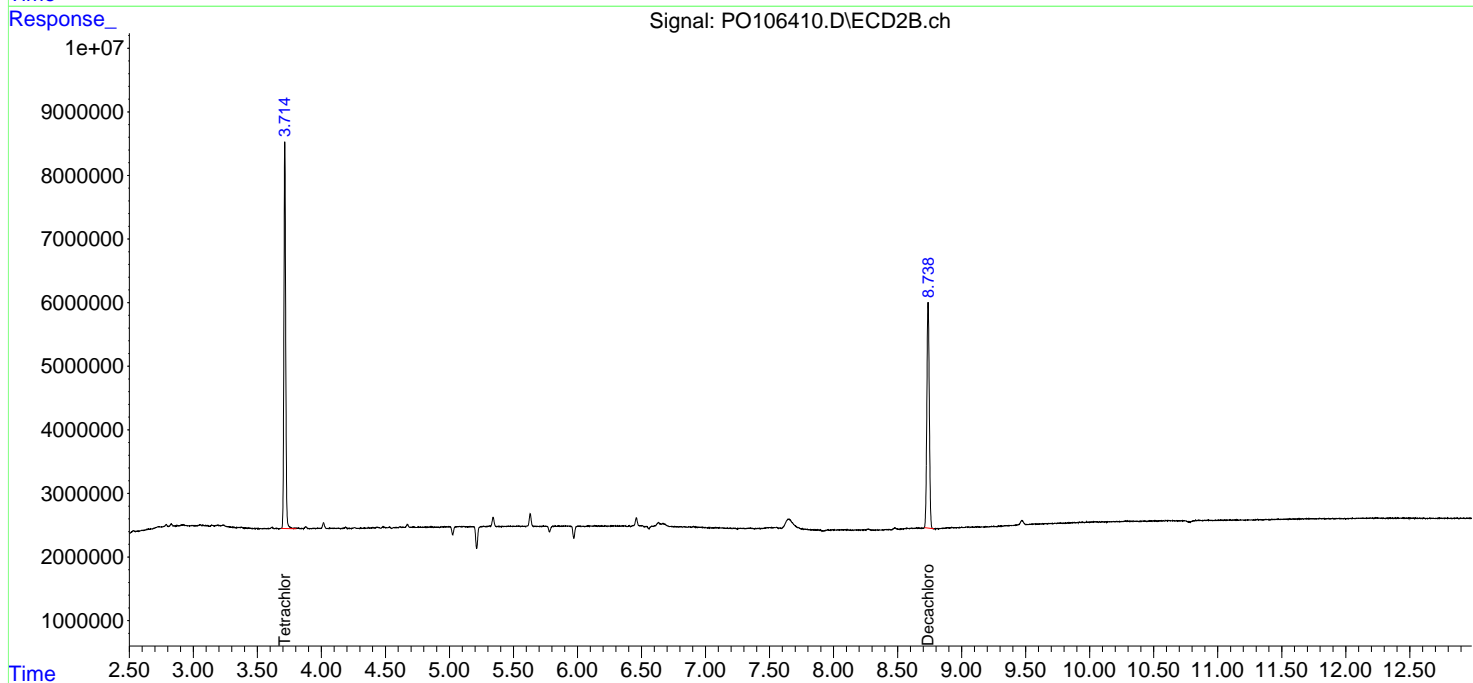
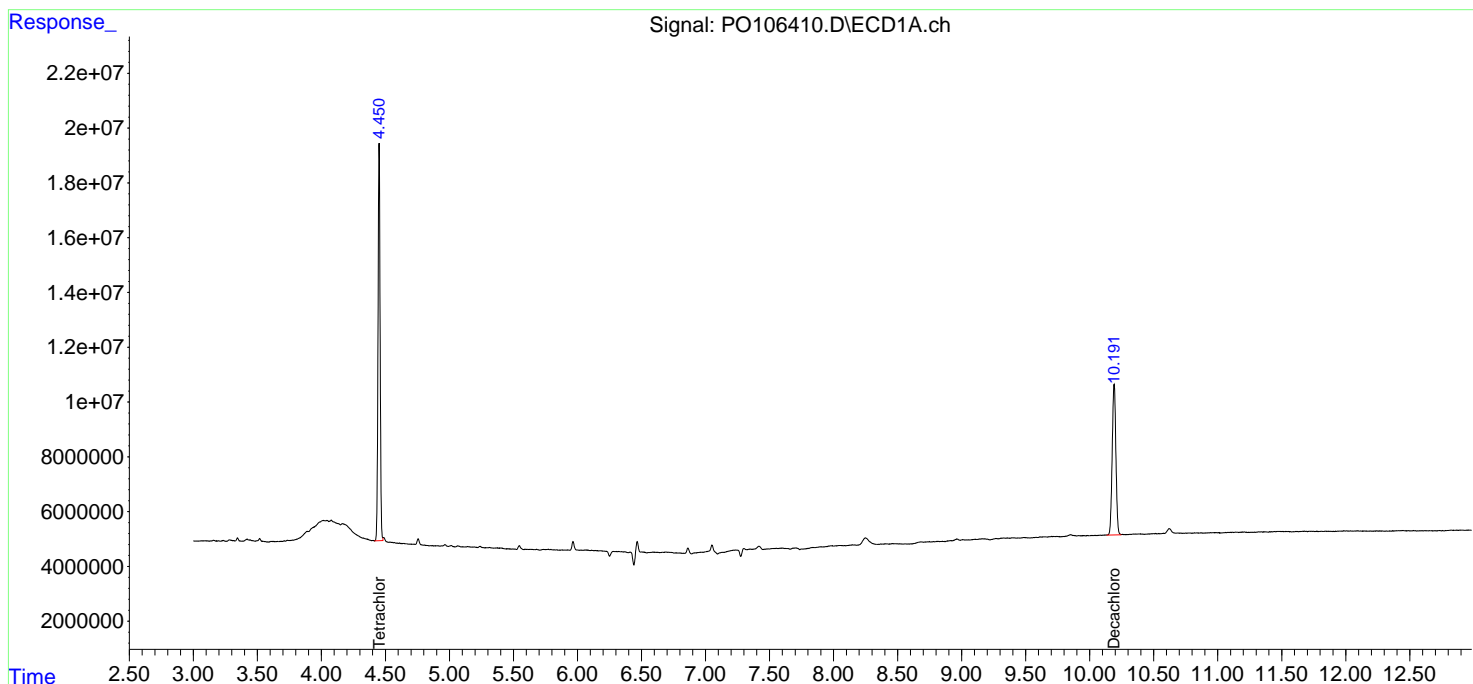
 (f)=RT Delta > 1/2 Window (#)=Amounts differ by > 25% (m)=manual int.

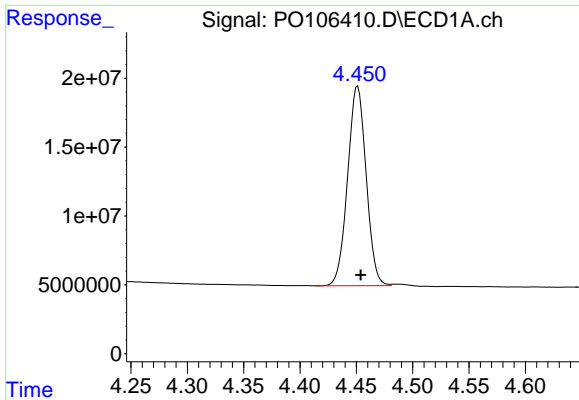
Data Path : Z:\pestpcbsrv\HPCHEM1\ECD_O\Data\PO091024\
 Data File : PO106410.D
 Signal(s) : Signal #1: ECD1A.ch Signal #2: ECD2B.ch
 Acq On : 11 Sep 2024 07:25
 Operator : YP/AJ
 Sample : I.BLK
 Misc :
 ALS Vial : 2 Sample Multiplier: 1

Instrument :
 ECD_O
 ClientSampleId :
 I.BLK

Integration File signal 1: autoint1.e
 Integration File signal 2: autoint2.e
 Quant Time: Sep 11 08:45:12 2024
 Quant Method : Z:\pestpcbsrv\HPCHEM1\ECD_O\methods\PO090924.M
 Quant Title : GC EXTRACTABLES
 QLast Update : Tue Sep 10 09:57:51 2024
 Response via : Initial Calibration
 Integrator: ChemStation

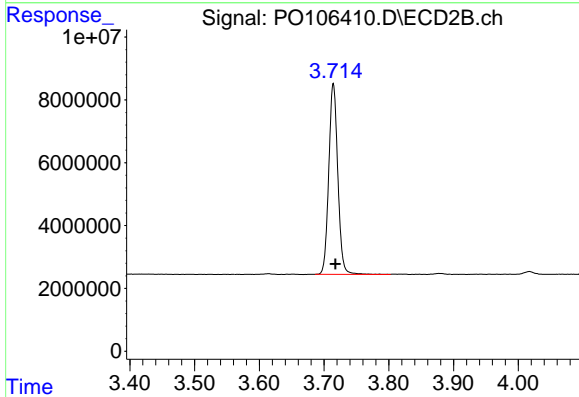
Volume Inj. : 2 µl
 Signal #1 Phase : ZB-MR1 Signal #2 Phase: ZB-MR2
 Signal #1 Info : 30Mx0.32mmx 0.50µ Signal #2 Info : 30M x 0.32mm x 0.25µm



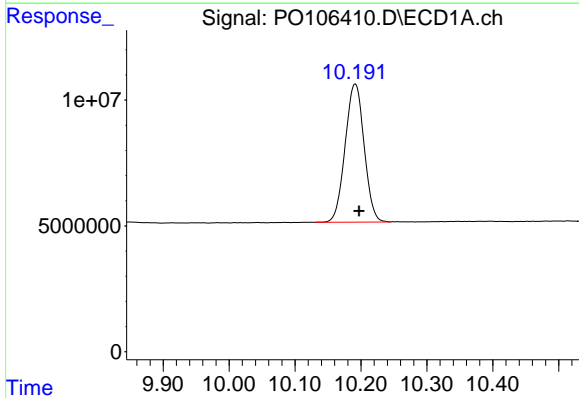


#1 Tetrachloro-m-xylene
R.T.: 4.451 min
Delta R.T.: -0.003 min
Response: 165861260
Conc: 22.11 ng/ml

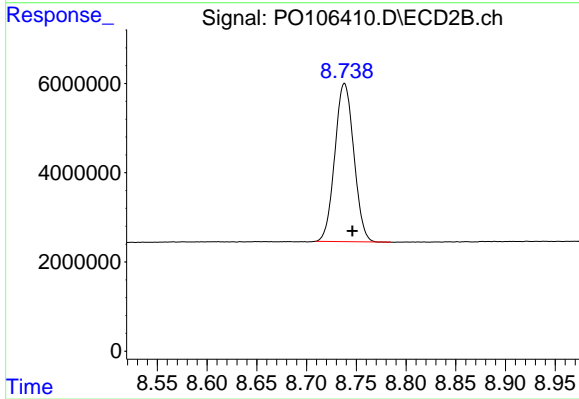
Instrument :
ECD_O
ClientSampleId :
I.BLK



#1 Tetrachloro-m-xylene
R.T.: 3.714 min
Delta R.T.: -0.003 min
Response: 58793498
Conc: 22.01 ng/ml



#2 Decachlorobiphenyl
R.T.: 10.191 min
Delta R.T.: -0.006 min
Response: 109920062
Conc: 22.24 ng/ml



#2 Decachlorobiphenyl
R.T.: 8.738 min
Delta R.T.: -0.008 min
Response: 47105900
Conc: 23.55 ng/ml