

Data Path : Z:\pestpcbsrv\HPCHEM1\ECD_0\Data\P0091025\
 Data File : P0113602.D
 Signal(s) : Signal #1: ECD1A.ch Signal #2: ECD2B.ch
 Acq On : 09 Sep 2025 10:05
 Operator : YP/AJ
 Sample : AR1660CCC500
 Misc :
 ALS Vial : 3 Sample Multiplier: 1

Instrument :
 ECD_0
ClientSampleId :
 AR1660CCC500

Manual Integrations
APPROVED

Reviewed By :Yogesh Patel 09/10/2025
 Supervised By :mohammad ahmed 09/11/2025

Integration File signal 1: autoint1.e
 Integration File signal 2: autoint2.e
 Quant Time: Sep 09 16:00:54 2025
 Quant Method : Z:\pestpcbsrv\HPCHEM1\ECD_0\methods\P0081825.M
 Quant Title : GC EXTRACTABLES
 QLast Update : Tue Sep 09 15:11:37 2025
 Response via : Initial Calibration
 Integrator: ChemStation

Volume Inj. : 2 µl
 Signal #1 Phase : ZB-MR1 Signal #2 Phase: ZB-MR2
 Signal #1 Info : 30Mx0.32mmx 0.50µ Signal #2 Info : 30M x 0.32mm x 0.25µm

Compound	RT#1	RT#2	Resp#1	Resp#2	ng/ml	ng/ml

System Monitoring Compounds						
1) SA Tetrachlo...	3.657	3.648	465.1E6	269.8E6	56.809	53.322
2) SA Decachlor...	8.668	8.613	368.4E6	102.3E6	53.151	53.999
Target Compounds						
3) L1 AR-1016-1	4.741	4.720	142.8E6	82447714	534.718	483.355
4) L1 AR-1016-2	4.759	4.738	224.9E6	129.8E6	560.160	503.862
5) L1 AR-1016-3	4.816	4.913	142.6E6	69628329	559.248	498.719
6) L1 AR-1016-4	4.935	4.956	115.7E6	58054718	530.623	497.474
7) L1 AR-1016-5	5.190	5.167	119.4E6	73939206	538.518m	518.762
31) L7 AR-1260-1	6.226	6.194	244.8E6	121.4E6	548.885	476.072
32) L7 AR-1260-2	6.416	6.382	377.7E6	156.2E6	550.030	451.714
33) L7 AR-1260-3	6.781	6.532	345.4E6	129.5E6	559.350	435.436
34) L7 AR-1260-4	7.040	7.000	248.6E6	92260595	555.060	445.167m
35) L7 AR-1260-5	7.284	7.244	665.9E6	201.8E6	550.031	430.705

(f)=RT Delta > 1/2 Window (#)=Amounts differ by > 25% (m)=manual int.

Data Path : Z:\pestpcbsrv\HPCHEM1\ECD_O\Data\PO091025\
 Data File : PO113602.D
 Signal(s) : Signal #1: ECD1A.ch Signal #2: ECD2B.ch
 Acq On : 09 Sep 2025 10:05
 Operator : YP/AJ
 Sample : AR1660CCC500
 Misc :
 ALS Vial : 3 Sample Multiplier: 1

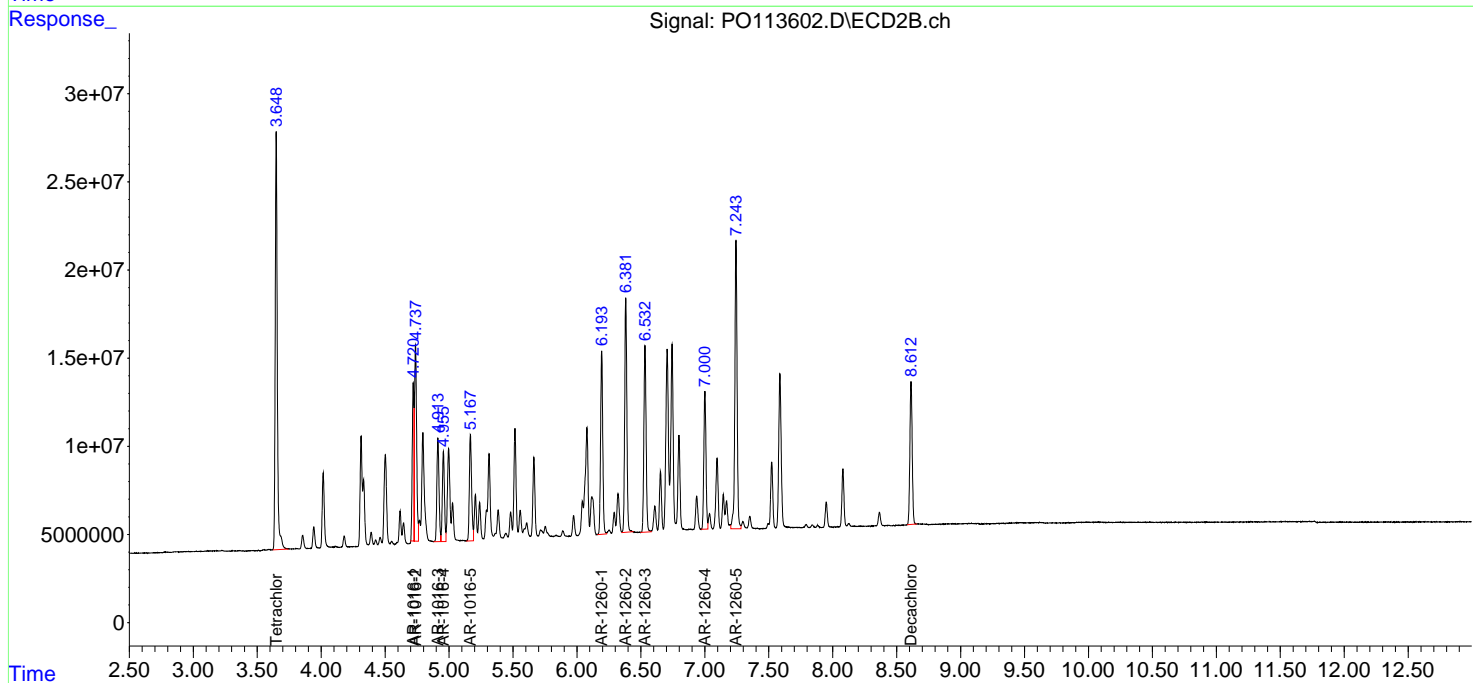
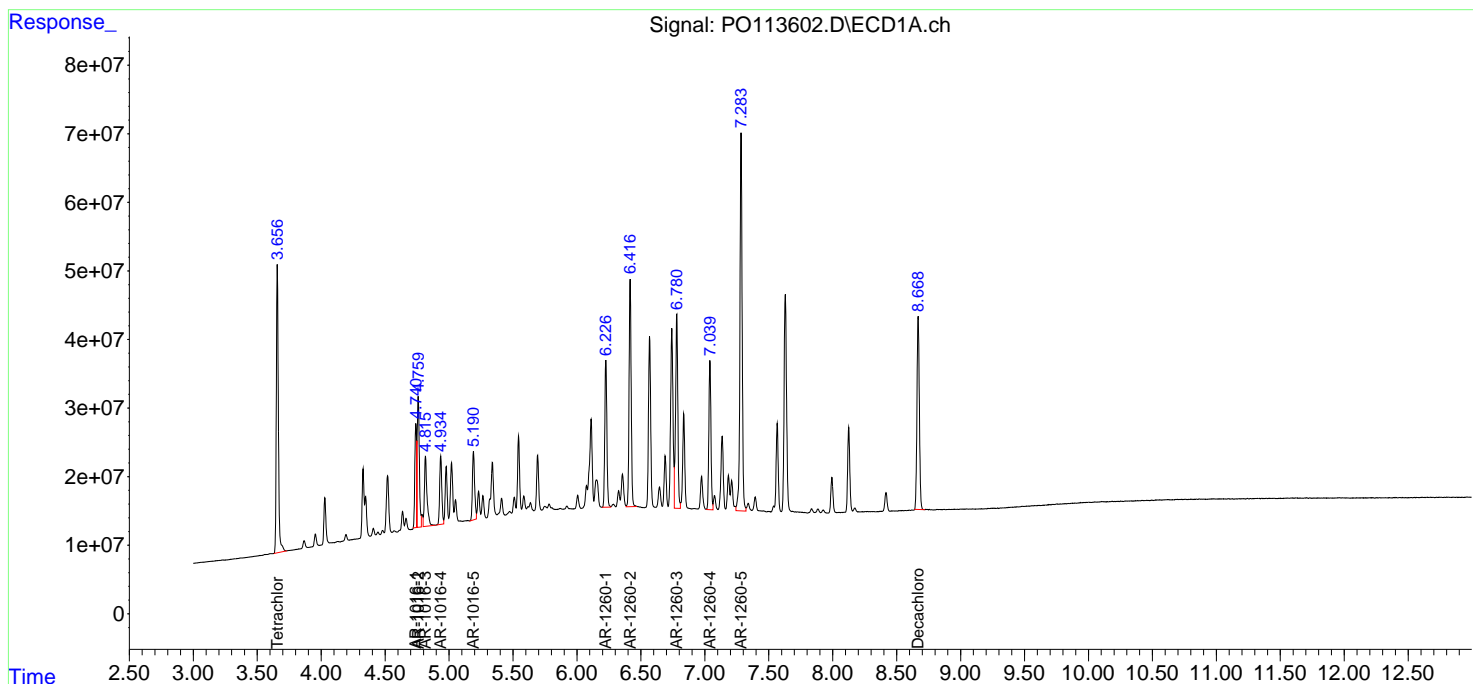
Instrument :
 ECD_O
ClientSampleId :
 AR1660CCC500

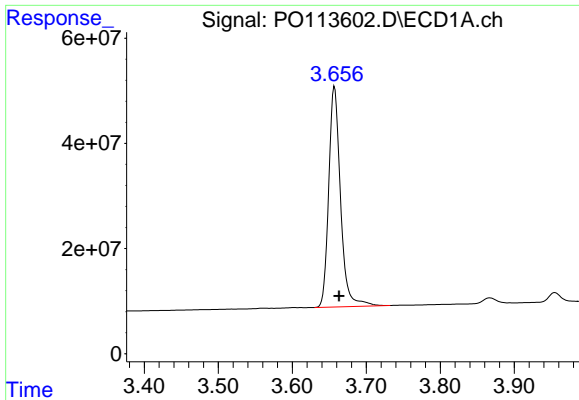
Manual Integrations
APPROVED

Reviewed By :Yogesh Patel 09/10/2025
 Supervised By :mohammad ahmed 09/11/2025

Integration File signal 1: autoint1.e
 Integration File signal 2: autoint2.e
 Quant Time: Sep 09 16:00:54 2025
 Quant Method : Z:\pestpcbsrv\HPCHEM1\ECD_O\methods\PO081825.M
 Quant Title : GC EXTRACTABLES
 QLast Update : Tue Sep 09 15:11:37 2025
 Response via : Initial Calibration
 Integrator: ChemStation

Volume Inj. : 2 µl
 Signal #1 Phase : ZB-MR1 Signal #2 Phase: ZB-MR2
 Signal #1 Info : 30Mx0.32mmx 0.50µ Signal #2 Info : 30M x 0.32mm x 0.25µm

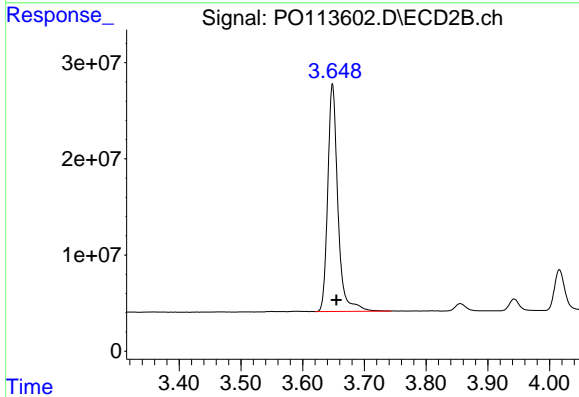




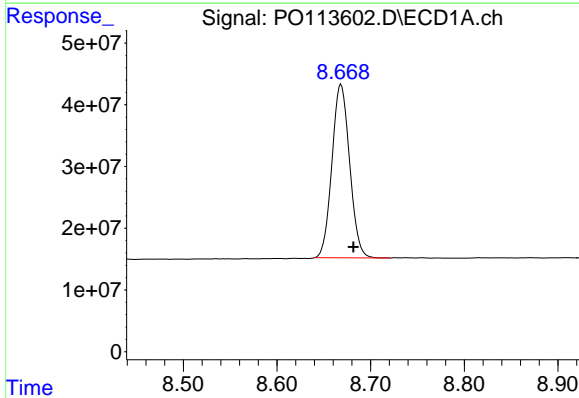
#1 Tetrachloro-m-xylene
 R.T.: 3.657 min
 Delta R.T.: -0.006 min
 Response: 465072623
 Conc: 56.81 ng/ml

Instrument :
 ECD_O
 ClientSampleId :
 AR1660CCC500

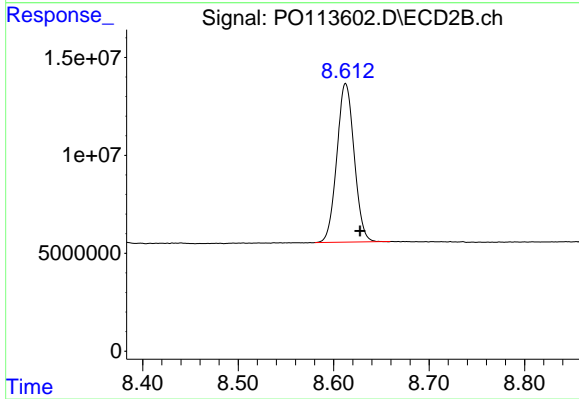
Manual Integrations
APPROVED
 Reviewed By :Yogesh Patel 09/10/2025
 Supervised By :mohammad ahmed 09/11/2025



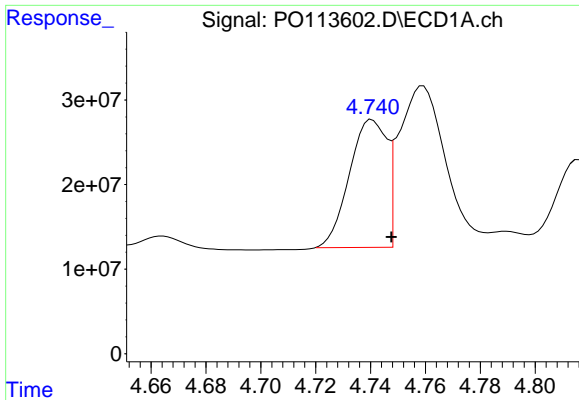
#1 Tetrachloro-m-xylene
 R.T.: 3.648 min
 Delta R.T.: -0.006 min
 Response: 269845543
 Conc: 53.32 ng/ml



#2 Decachlorobiphenyl
 R.T.: 8.668 min
 Delta R.T.: -0.013 min
 Response: 368412173
 Conc: 53.15 ng/ml



#2 Decachlorobiphenyl
 R.T.: 8.613 min
 Delta R.T.: -0.015 min
 Response: 102319431
 Conc: 54.00 ng/ml



#3 AR-1016-1

R.T.: 4.741 min
 Delta R.T.: -0.007 min
 Response: 142761700
 Conc: 534.72 ng/ml

Instrument :

ECD_O

ClientSampleId :

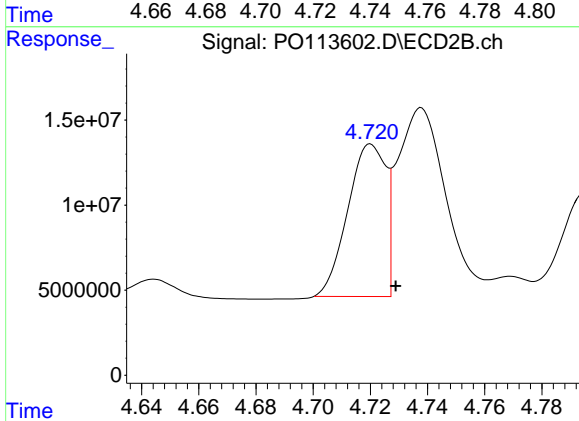
AR1660CCC500

Manual Integrations

APPROVED

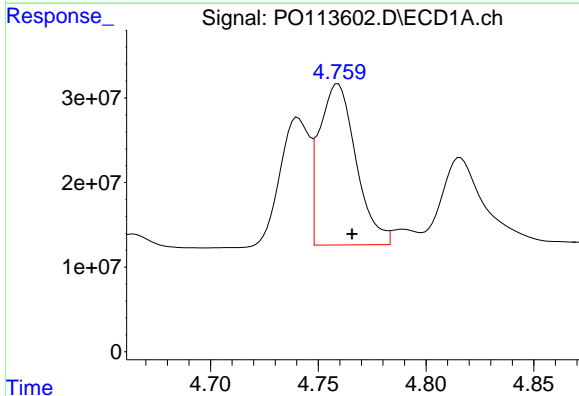
Reviewed By :Yogesh Patel 09/10/2025

Supervised By :mohammad ahmed 09/11/2025



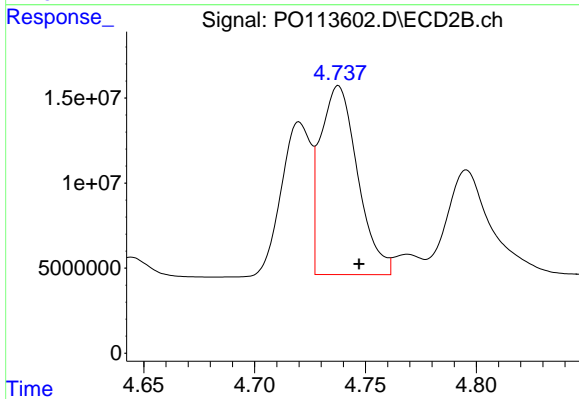
#3 AR-1016-1

R.T.: 4.720 min
 Delta R.T.: -0.009 min
 Response: 82447714
 Conc: 483.36 ng/ml



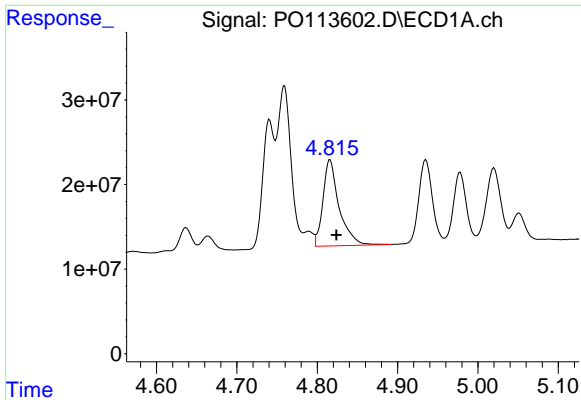
#4 AR-1016-2

R.T.: 4.759 min
 Delta R.T.: -0.006 min
 Response: 224865771
 Conc: 560.16 ng/ml



#4 AR-1016-2

R.T.: 4.738 min
 Delta R.T.: -0.009 min
 Response: 129823164
 Conc: 503.86 ng/ml



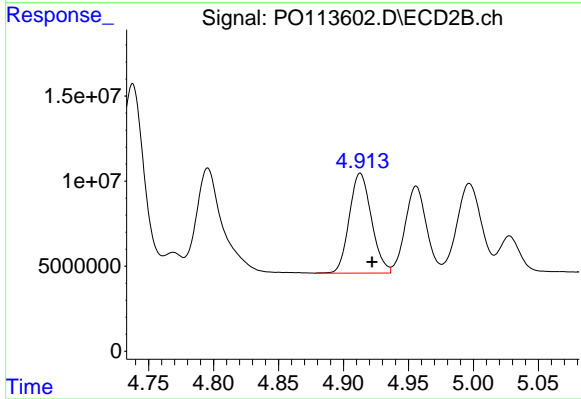
#5 AR-1016-3

R.T.: 4.816 min
 Delta R.T.: -0.008 min
 Response: 142620761
 Conc: 559.25 ng/ml

Instrument :
 ECD_O
 ClientSampleId :
 AR1660CCC500

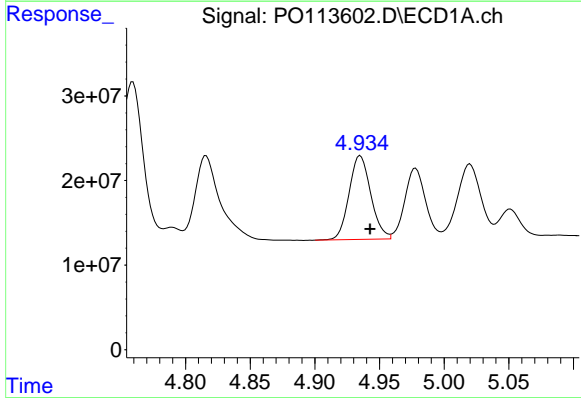
Manual Integrations
 APPROVED

Reviewed By :Yogesh Patel 09/10/2025
 Supervised By :mohammad ahmed 09/11/2025



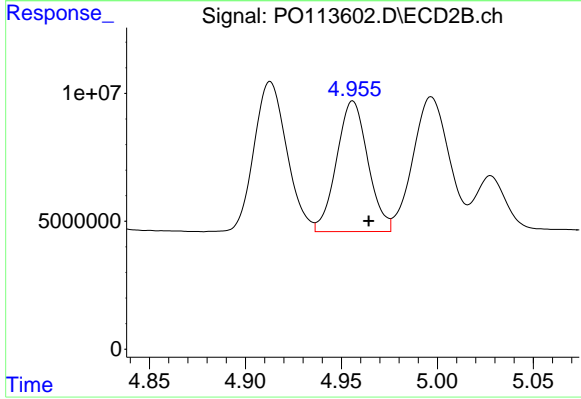
#5 AR-1016-3

R.T.: 4.913 min
 Delta R.T.: -0.009 min
 Response: 69628329
 Conc: 498.72 ng/ml



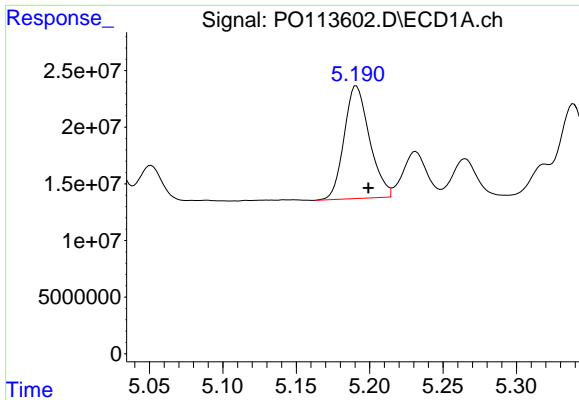
#6 AR-1016-4

R.T.: 4.935 min
 Delta R.T.: -0.008 min
 Response: 115711885
 Conc: 530.62 ng/ml



#6 AR-1016-4

R.T.: 4.956 min
 Delta R.T.: -0.008 min
 Response: 58054718
 Conc: 497.47 ng/ml



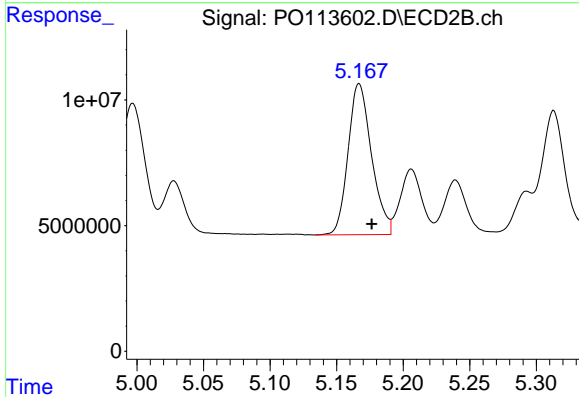
#7 AR-1016-5

R.T.: 5.190 min
 Delta R.T.: -0.009 min
 Response: 119350716
 Conc: 538.52 ng/ml

Instrument :
 ECD_O
 ClientSampleId :
 AR1660CCC500

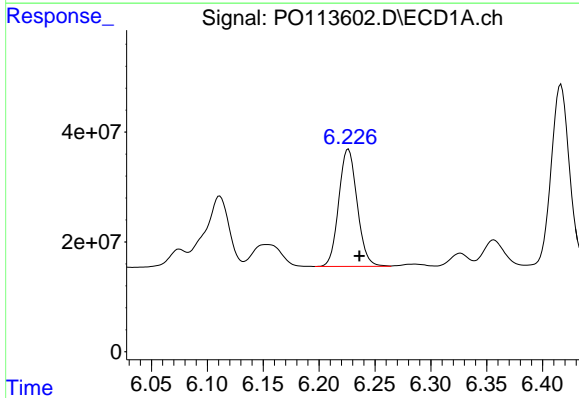
Manual Integrations
 APPROVED

Reviewed By :Yogesh Patel 09/10/2025
 Supervised By :mohammad ahmed 09/11/2025



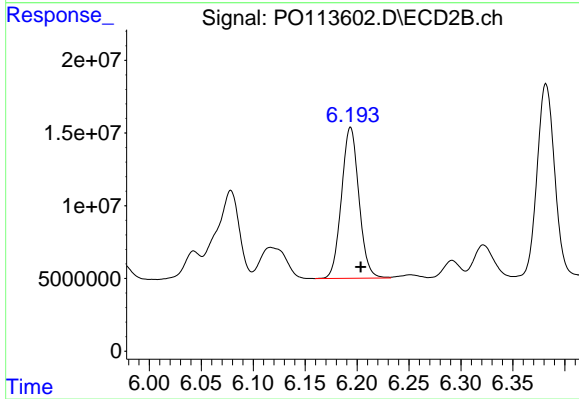
#7 AR-1016-5

R.T.: 5.167 min
 Delta R.T.: -0.009 min
 Response: 73939206
 Conc: 518.76 ng/ml



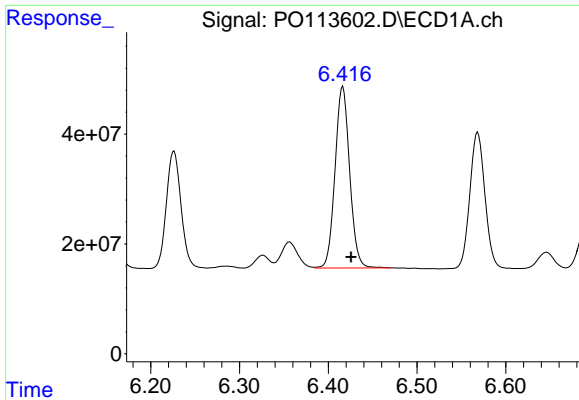
#31 AR-1260-1

R.T.: 6.226 min
 Delta R.T.: -0.010 min
 Response: 244792187
 Conc: 548.89 ng/ml



#31 AR-1260-1

R.T.: 6.194 min
 Delta R.T.: -0.010 min
 Response: 121431048
 Conc: 476.07 ng/ml



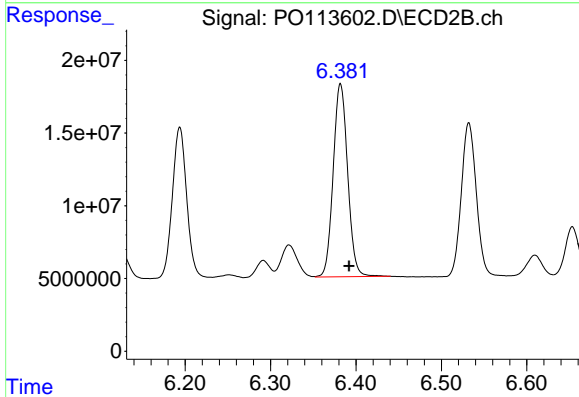
#32 AR-1260-2

R.T.: 6.416 min
 Delta R.T.: -0.009 min
 Response: 377716995
 Conc: 550.03 ng/ml

Instrument :
 ECD_O
 ClientSampleId :
 AR1660CCC500

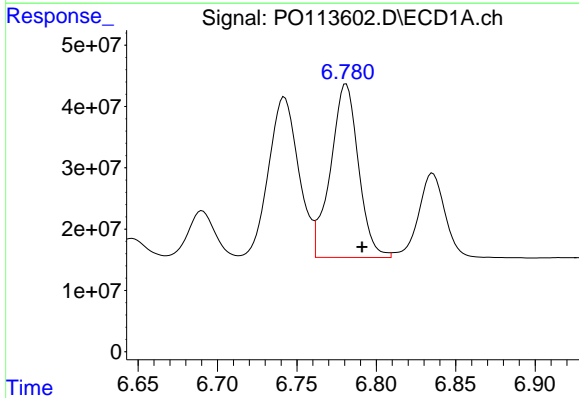
Manual Integrations
 APPROVED

Reviewed By :Yogesh Patel 09/10/2025
 Supervised By :mohammad ahmed 09/11/2025



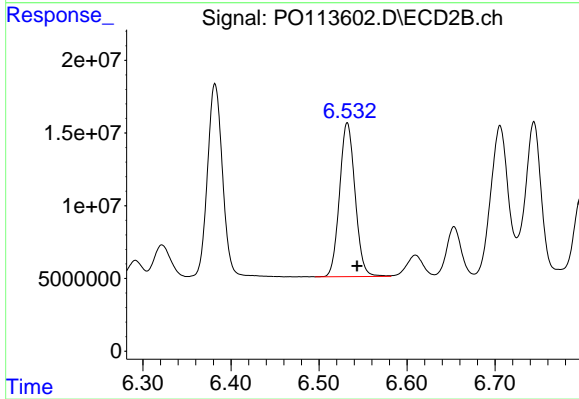
#32 AR-1260-2

R.T.: 6.382 min
 Delta R.T.: -0.010 min
 Response: 156162734
 Conc: 451.71 ng/ml



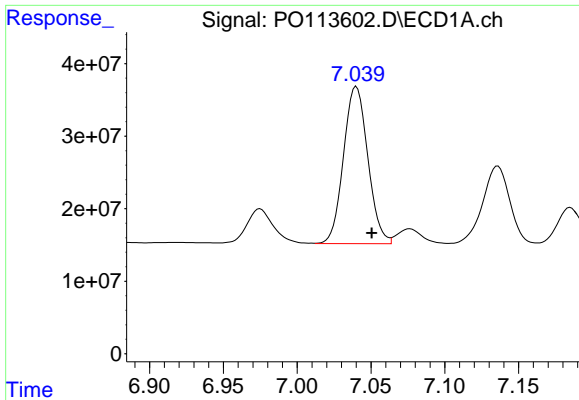
#33 AR-1260-3

R.T.: 6.781 min
 Delta R.T.: -0.010 min
 Response: 345383756
 Conc: 559.35 ng/ml



#33 AR-1260-3

R.T.: 6.532 min
 Delta R.T.: -0.011 min
 Response: 129513435
 Conc: 435.44 ng/ml



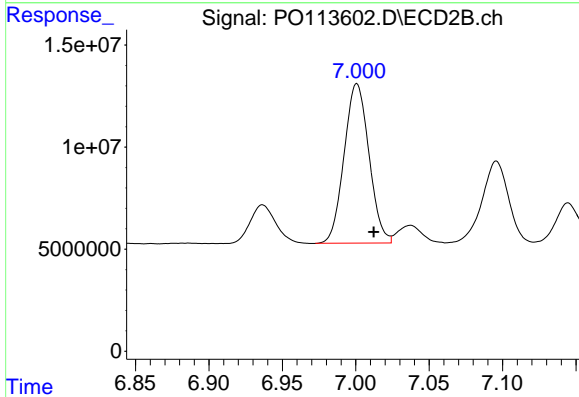
#34 AR-1260-4

R.T.: 7.040 min
 Delta R.T.: -0.010 min
 Response: 248597140
 Conc: 555.06 ng/ml

Instrument :
 ECD_O
 ClientSampleId :
 AR1660CCC500

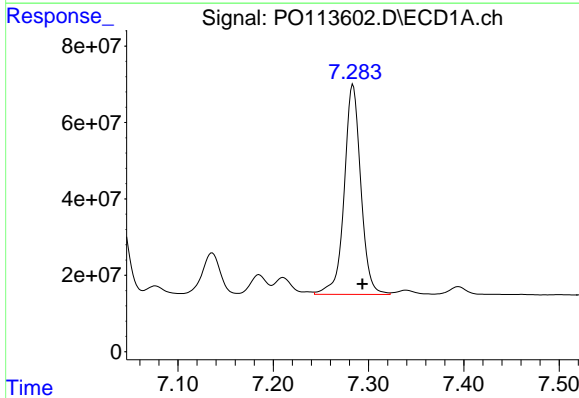
Manual Integrations
 APPROVED

Reviewed By :Yogesh Patel 09/10/2025
 Supervised By :mohammad ahmed 09/11/2025



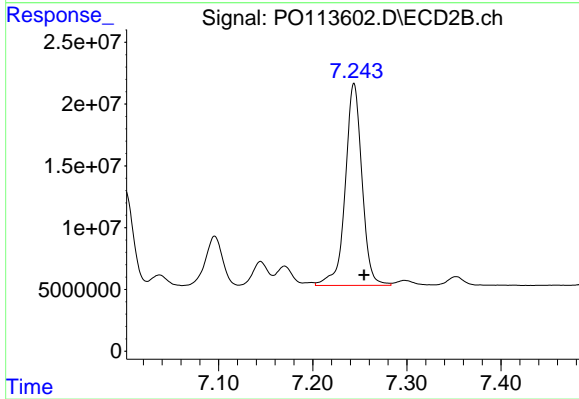
#34 AR-1260-4

R.T.: 7.000 min
 Delta R.T.: -0.012 min
 Response: 92260595
 Conc: 445.17 ng/ml m



#35 AR-1260-5

R.T.: 7.284 min
 Delta R.T.: -0.010 min
 Response: 665914090
 Conc: 550.03 ng/ml



#35 AR-1260-5

R.T.: 7.244 min
 Delta R.T.: -0.011 min
 Response: 201754900
 Conc: 430.71 ng/ml