

Data Path : Z:\pestpcbsrv\HPCHEM1\ECD\_0\Data\P0091025\  
 Data File : P0113608.D  
 Signal(s) : Signal #1: ECD1A.ch Signal #2: ECD2B.ch  
 Acq On : 09 Sep 2025 11:56  
 Operator : YP/AJ  
 Sample : Q2893-01  
 Misc : AR1248 SOIL LOD 40PPB  
 ALS Vial : 11 Sample Multiplier: 1

**Instrument :**  
 ECD\_0  
**ClientSampleId :**  
 LOD-MDL-SOIL-01-QT3-2025

**Manual Integrations**  
**APPROVED**

Reviewed By :Yogesh Patel 09/10/2025  
 Supervised By :mohammad ahmed 09/11/2025

Integration File signal 1: autoint1.e  
 Integration File signal 2: autoint2.e  
 Quant Time: Sep 09 16:06:56 2025  
 Quant Method : Z:\pestpcbsrv\HPCHEM1\ECD\_0\methods\P0081825.M  
 Quant Title : GC EXTRACTABLES  
 QLast Update : Tue Sep 09 15:11:37 2025  
 Response via : Initial Calibration  
 Integrator: ChemStation

Volume Inj. : 2 µl  
 Signal #1 Phase : ZB-MR1 Signal #2 Phase: ZB-MR2  
 Signal #1 Info : 30Mx0.32mmx 0.50µ Signal #2 Info : 30M x 0.32mm x 0.25µm

Compound	RT#1	RT#2	Resp#1	Resp#2	ng/ml	ng/ml
-----						
System Monitoring Compounds						
1) SA Tetrachlo...	3.658	3.649	162.0E6	96724320	19.789	19.113
2) SA Decachlor...	8.669	8.614	142.6E6	40207477	20.567	21.219
Target Compounds						
21) L5 AR-1248-1	4.742	4.721	5963610	4133839	34.182	37.071
22) L5 AR-1248-2	4.979	4.956	8935069	6841909	36.942	42.576
23) L5 AR-1248-3	5.192	4.998	13543773	7025920	42.475	41.412
24) L5 AR-1248-4	5.544	5.168	16251730	9031143	32.529m	45.332 #
25) L5 AR-1248-5	5.586	5.558	12011786	8570332	35.174m	40.370m
-----						

(f)=RT Delta > 1/2 Window (#)=Amounts differ by > 25% (m)=manual int.

Data Path : Z:\pestpcbsrv\HPCHEM1\ECD\_O\Data\PO091025\  
 Data File : PO113608.D  
 Signal(s) : Signal #1: ECD1A.ch Signal #2: ECD2B.ch  
 Acq On : 09 Sep 2025 11:56  
 Operator : YP/AJ  
 Sample : Q2893-01  
 Misc : AR1248 SOIL LOD 40PPB  
 ALS Vial : 11 Sample Multiplier: 3

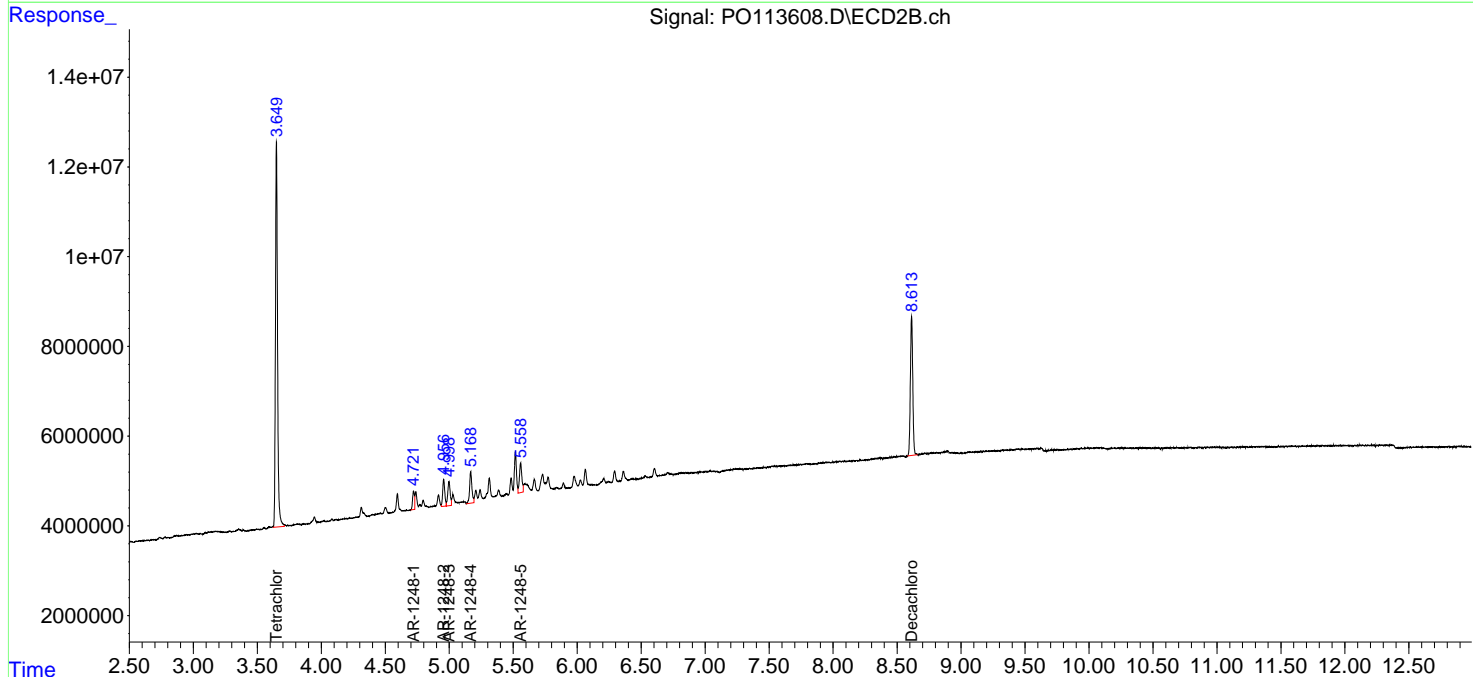
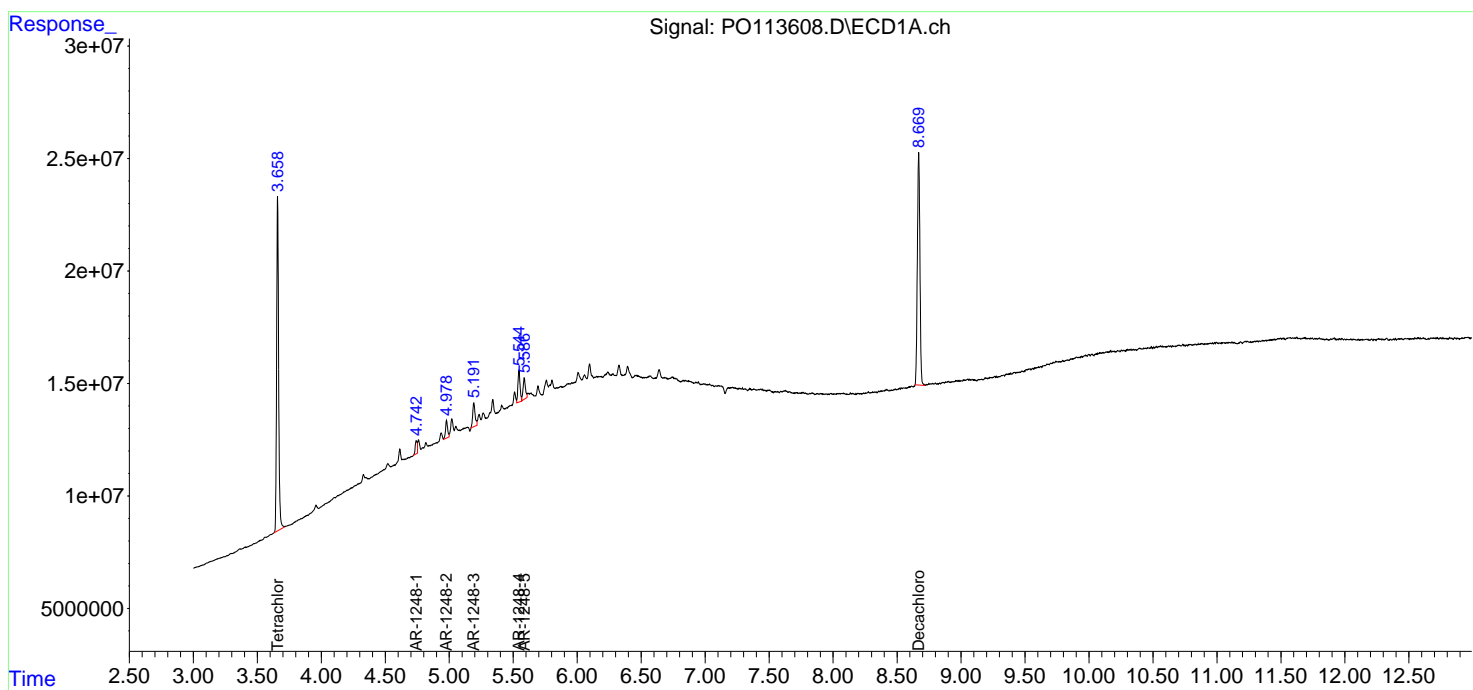
Instrument :  
 ECD\_O  
 ClientSampleId :  
 LOD-MDL-SOIL-01-QT3-2025

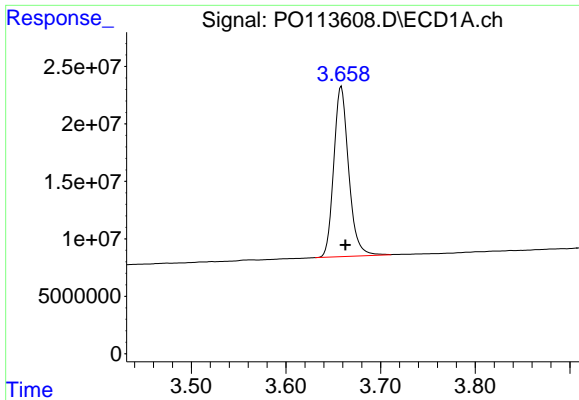
Manual Integrations  
 APPROVED

Reviewed By :Yogesh Patel 09/10/2025  
 Supervised By :mohammad ahmed 09/11/2025

Integration File signal 1: autoint1.e  
 Integration File signal 2: autoint2.e  
 Quant Time: Sep 09 16:06:56 2025  
 Quant Method : Z:\pestpcbsrv\HPCHEM1\ECD\_O\methods\PO081825.M  
 Quant Title : GC EXTRACTABLES  
 QLast Update : Tue Sep 09 15:11:37 2025  
 Response via : Initial Calibration  
 Integrator: ChemStation

Volume Inj. : 2 µl  
 Signal #1 Phase : ZB-MR1 Signal #2 Phase: ZB-MR2  
 Signal #1 Info : 30Mx0.32mmx 0.50µ Signal #2 Info : 30M x 0.32mm x 0.25µm

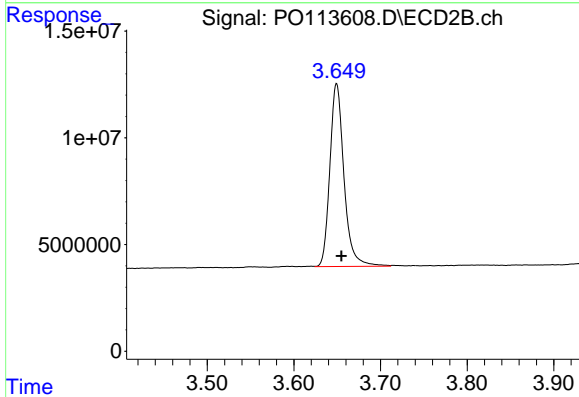




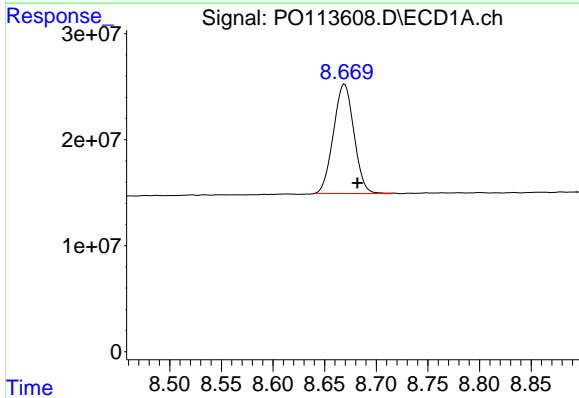
#1 Tetrachloro-m-xylene  
 R.T.: 3.658 min  
 Delta R.T.: -0.005 min  
 Response: 162008329  
 Conc: 19.79 ng/ml

Instrument : ECD\_O  
 Client Sample Id : LOD-MDL-SOIL-01-QT3-2025

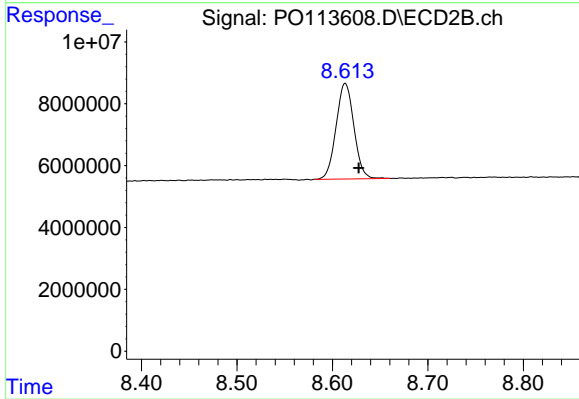
Manual Integrations  
**APPROVED**  
 Reviewed By :Yogesh Patel 09/10/2025  
 Supervised By :mohammad ahmed 09/11/2025



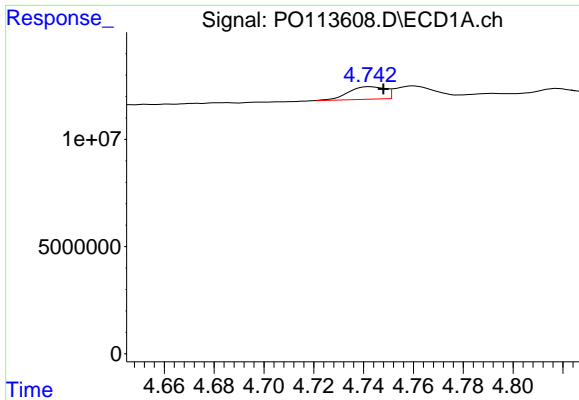
#1 Tetrachloro-m-xylene  
 R.T.: 3.649 min  
 Delta R.T.: -0.006 min  
 Response: 96724320  
 Conc: 19.11 ng/ml



#2 Decachlorobiphenyl  
 R.T.: 8.669 min  
 Delta R.T.: -0.012 min  
 Response: 142556585  
 Conc: 20.57 ng/ml



#2 Decachlorobiphenyl  
 R.T.: 8.614 min  
 Delta R.T.: -0.014 min  
 Response: 40207477  
 Conc: 21.22 ng/ml

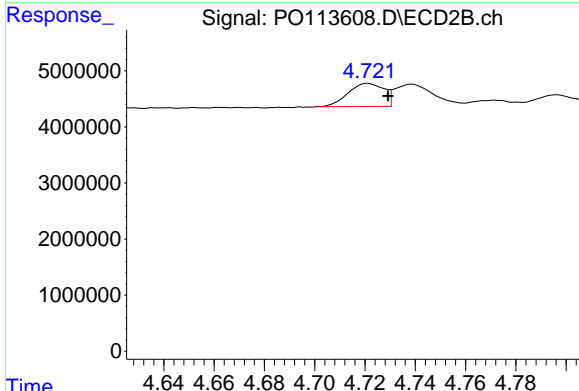


#21 AR-1248-1

R.T.: 4.742 min  
 Delta R.T.: -0.005 min  
 Response: 5963610  
 Conc: 34.18 ng/ml

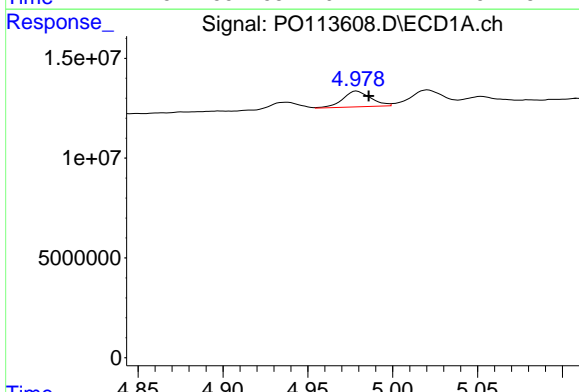
Instrument : ECD\_O  
 ClientSampleId : LOD-MDL-SOIL-01-QT3-2025

**Manual Integrations**  
**APPROVED**  
 Reviewed By :Yogesh Patel 09/10/2025  
 Supervised By :mohammad ahmed 09/11/2025



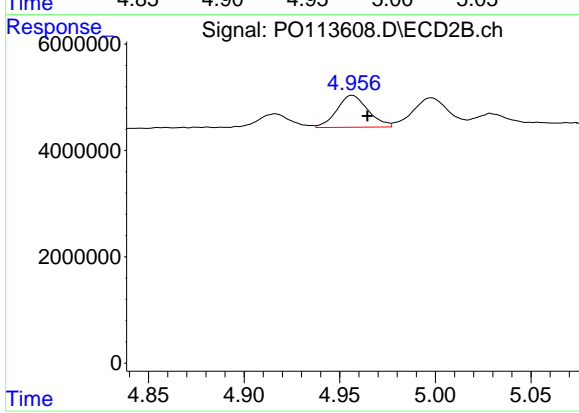
#21 AR-1248-1

R.T.: 4.721 min  
 Delta R.T.: -0.008 min  
 Response: 4133839  
 Conc: 37.07 ng/ml



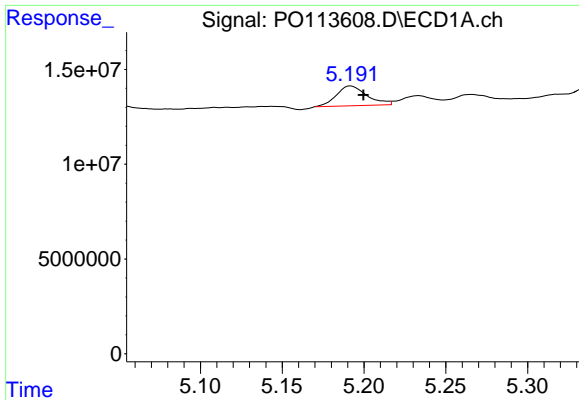
#22 AR-1248-2

R.T.: 4.979 min  
 Delta R.T.: -0.007 min  
 Response: 8935069  
 Conc: 36.94 ng/ml



#22 AR-1248-2

R.T.: 4.956 min  
 Delta R.T.: -0.008 min  
 Response: 6841909  
 Conc: 42.58 ng/ml

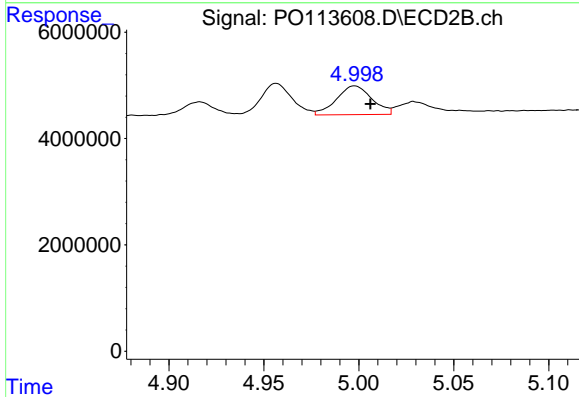


#23 AR-1248-3

R.T.: 5.192 min  
 Delta R.T.: -0.008 min  
 Response: 13543773  
 Conc: 42.48 ng/ml

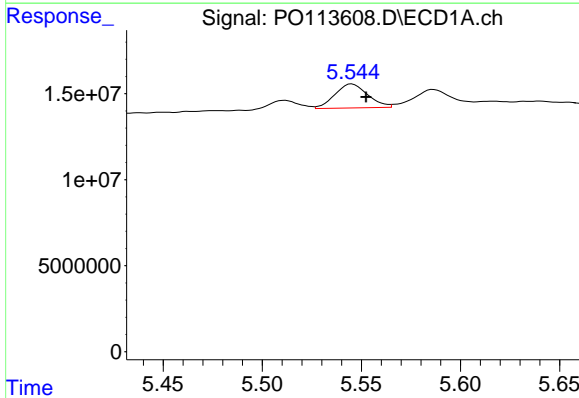
Instrument : ECD\_O  
 ClientSampleId : LOD-MDL-SOIL-01-QT3-2025

**Manual Integrations**  
**APPROVED**  
 Reviewed By :Yogesh Patel 09/10/2025  
 Supervised By :mohammad ahmed 09/11/2025



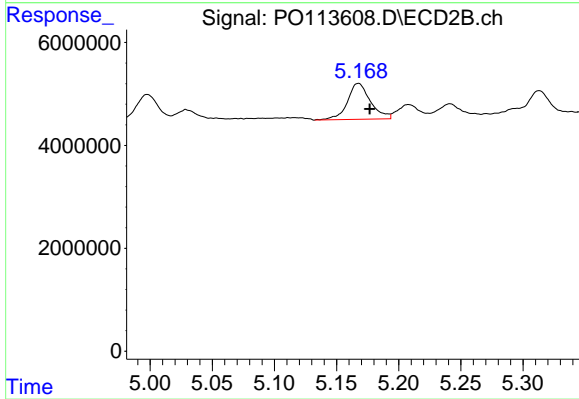
#23 AR-1248-3

R.T.: 4.998 min  
 Delta R.T.: -0.008 min  
 Response: 7025920  
 Conc: 41.41 ng/ml



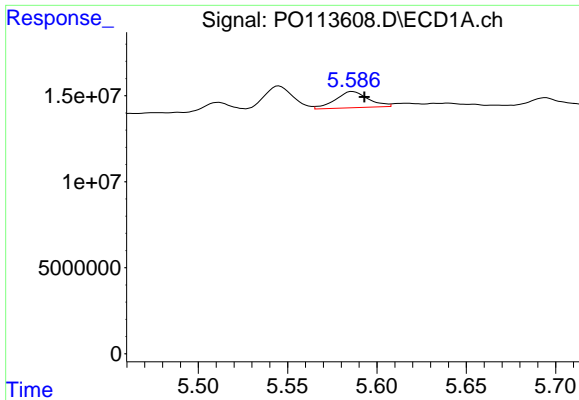
#24 AR-1248-4

R.T.: 5.544 min  
 Delta R.T.: -0.008 min  
 Response: 16251730  
 Conc: 32.53 ng/ml m



#24 AR-1248-4

R.T.: 5.168 min  
 Delta R.T.: -0.009 min  
 Response: 9031143  
 Conc: 45.33 ng/ml



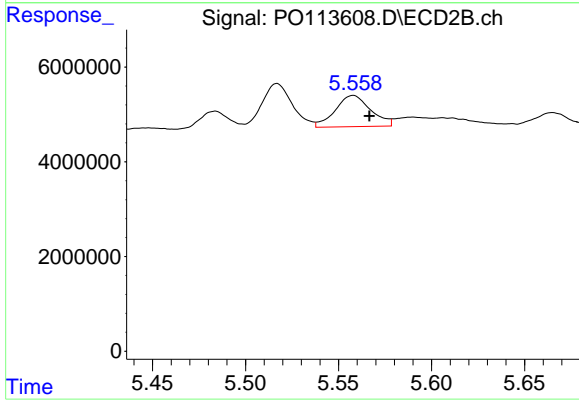
#25 AR-1248-5

R.T.: 5.586 min  
 Delta R.T.: -0.007 min  
 Response: 12011786  
 Conc: 35.17 ng/ml

Instrument :  
 ECD\_O  
 ClientSampleId :  
 LOD-MDL-SOIL-01-QT3-2025

Manual Integrations  
 APPROVED

Reviewed By :Yogesh Patel 09/10/2025  
 Supervised By :mohammad ahmed 09/11/2025



#25 AR-1248-5

R.T.: 5.558 min  
 Delta R.T.: -0.009 min  
 Response: 8570332  
 Conc: 40.37 ng/ml m