

Data Path : P:\HPCHEM1\ECD_O\Data\PO091115\
 Data File : PO024524.D
 Signal(s) : Signal #1: ECD1A.CH Signal #2: ECD2B.CH
 Acq On : 11 Sep 2015 16:15
 Operator : IZ/UA
 Sample : PB85484BL
 Misc :
 ALS Vial : 18 Sample Multiplier: 1

Instrument :
 ECD_O
 ClientSampleId :
 PB85484BL

Integration File signal 1: autoint1.e
 Integration File signal 2: autoint2.e
 Quant Time: Sep 12 05:07:57 2015
 Quant Method : P:\HPCHEM1\ECD_O\methods\PO091115.M
 Quant Title : GC EXTRACTABLES
 QLast Update : Sat Sep 12 04:39:58 2015
 Response via : Initial Calibration
 Integrator: ChemStation 6890 Scale Mode: Small noise peaks clipped

Volume Inj. : 2 µl
 Signal #1 Phase : ZB-MR1 Signal #2 Phase: ZB-MR2
 Signal #1 Info : 30Mx0.32mmx 0.50µ Signal #2 Info : 30M x 0.32mm x 0.25µm

Compound	RT#1	RT#2	Resp#1	Resp#2	ng/ml	ng/ml

System Monitoring Compounds						
1) SA Tetrachlo...	4.117	3.226	4020235	5102870	18.124	18.137
2) SA Decachlor...	9.648	8.025	2314018	5062504	18.992	18.726

Target Compounds

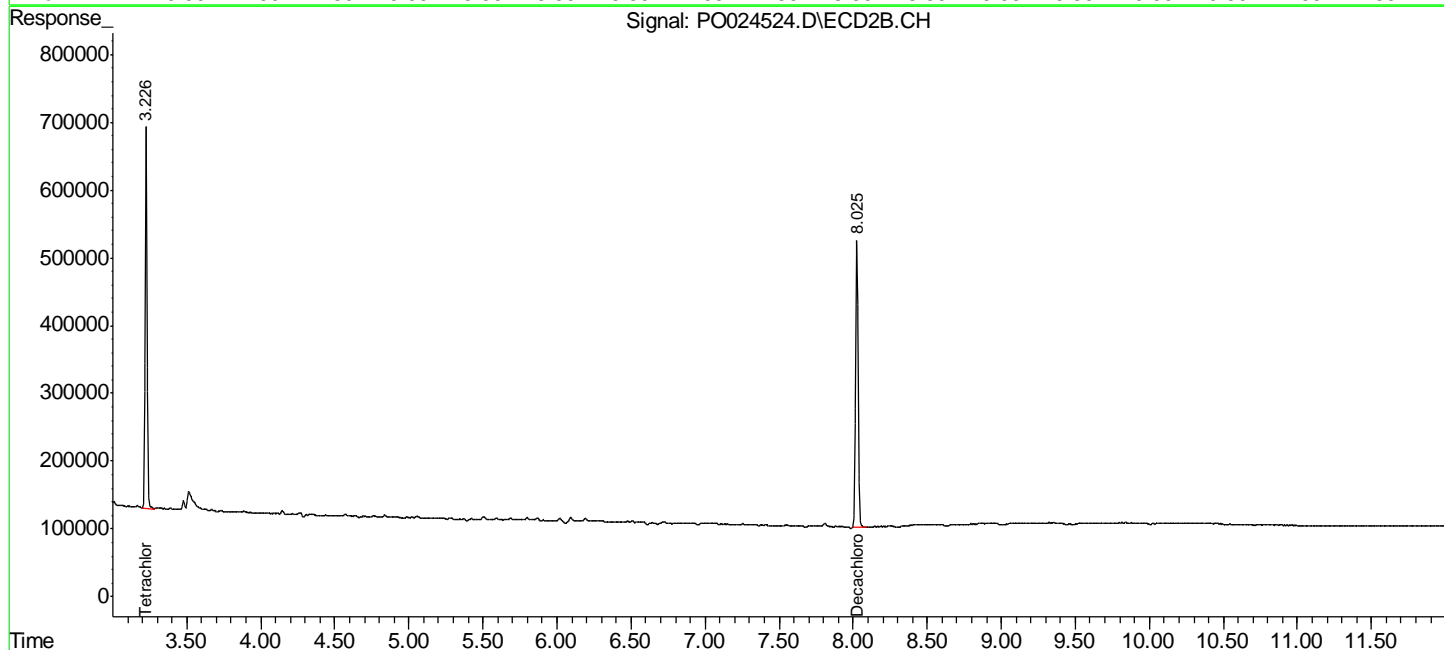
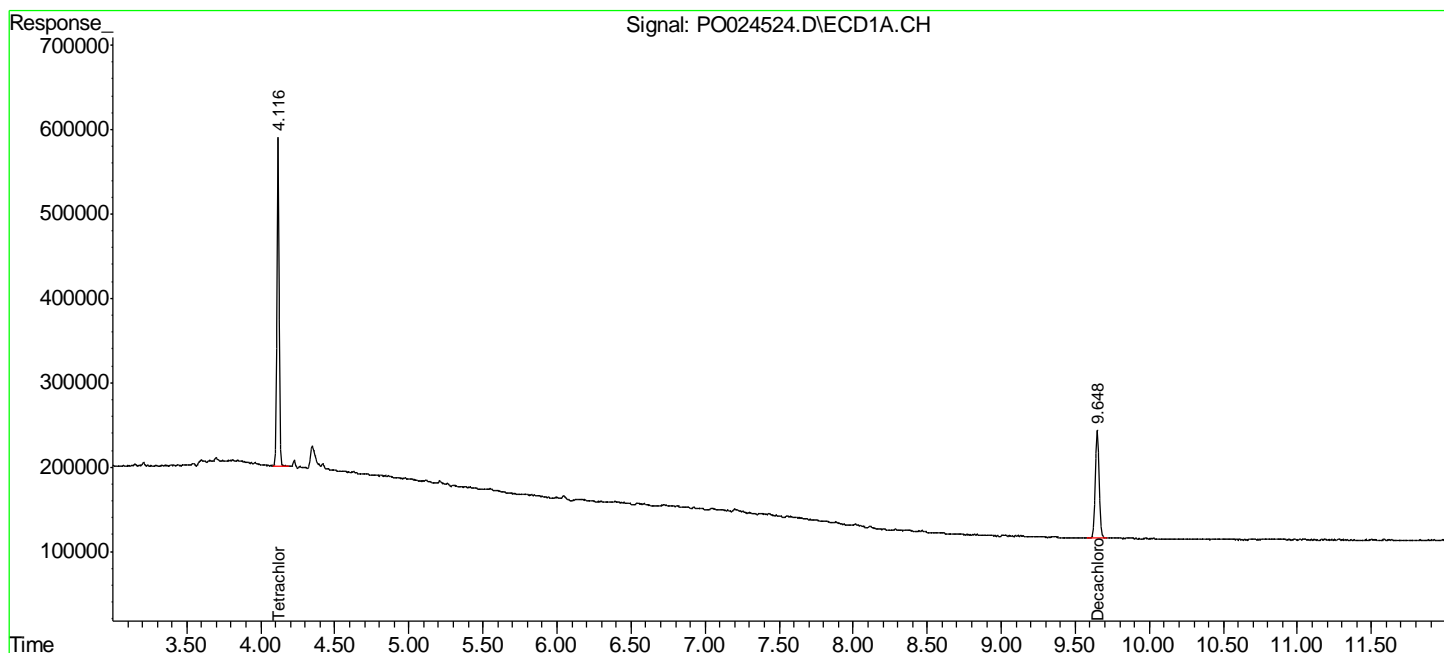
 (f)=RT Delta > 1/2 Window (#)=Amounts differ by > 25% (m)=manual int.

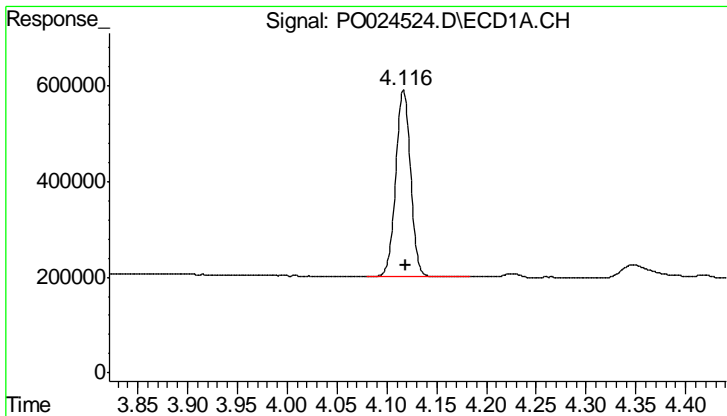
Data Path : P:\HPCHEM1\ECD_O\Data\PO091115\
 Data File : PO024524.D
 Signal(s) : Signal #1: ECD1A.CH Signal #2: ECD2B.CH
 Acq On : 11 Sep 2015 16:15
 Operator : IZ/UA
 Sample : PB85484BL
 Misc :
 ALS Vial : 18 Sample Multiplier: 1

Instrument :
 ECD_O
 ClientSampleID :
 PB85484BL

Integration File signal 1: autoint1.e
 Integration File signal 2: autoint2.e
 Quant Time: Sep 12 05:07:57 2015
 Quant Method : P:\HPCHEM1\ECD_O\methods\PO091115.M
 Quant Title : GC EXTRACTABLES
 QLast Update : Sat Sep 12 04:39:58 2015
 Response via : Initial Calibration
 Integrator: ChemStation 6890 Scale Mode: Small noise peaks clipped

Volume Inj. : 2 µl
 Signal #1 Phase : ZB-MR1 Signal #2 Phase: ZB-MR2
 Signal #1 Info : 30Mx0.32mmx 0.50µ Signal #2 Info : 30M x 0.32mm x 0.25µm

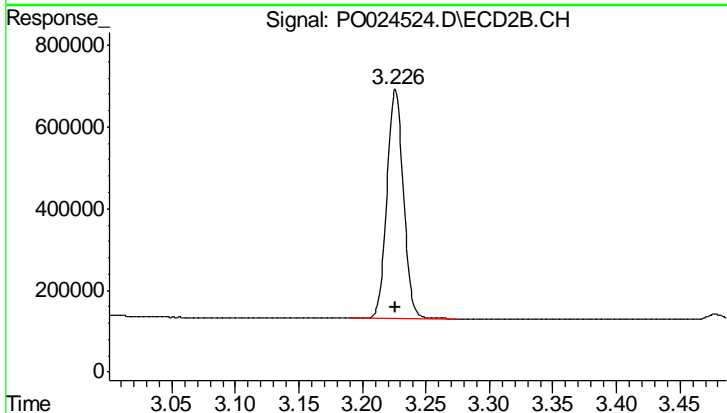




#1 Tetrachloro-m-xylene

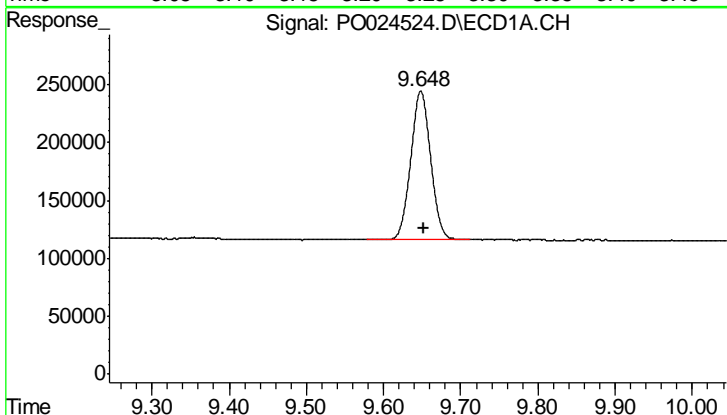
R.T.: 4.117 min
 Delta R.T.: -0.003 min
 Response: 4020235
 Conc: 18.12 ng/ml

Instrument :
 ECD_O
 ClientSampleId :
 PB85484BL



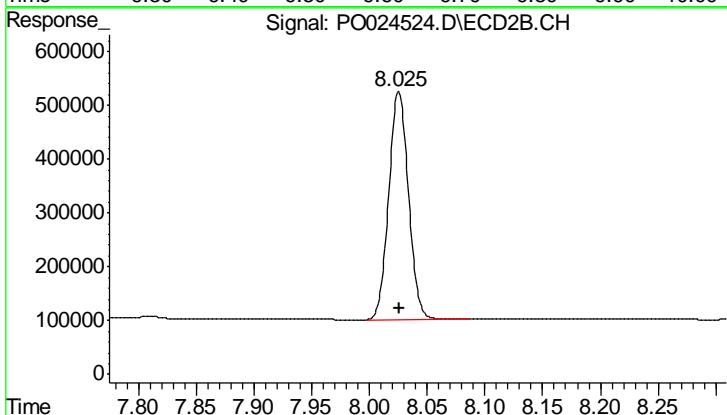
#1 Tetrachloro-m-xylene

R.T.: 3.226 min
 Delta R.T.: 0.000 min
 Response: 5102870
 Conc: 18.14 ng/ml



#2 Decachlorobiphenyl

R.T.: 9.648 min
 Delta R.T.: -0.004 min
 Response: 2314018
 Conc: 18.99 ng/ml



#2 Decachlorobiphenyl

R.T.: 8.025 min
 Delta R.T.: 0.000 min
 Response: 5062504
 Conc: 18.73 ng/ml