

Data Path : Z:\pestpcbsrv\HPCHEM1\ECD_0\Data\P0091119\
 Data File : P0060657.D
 Signal(s) : Signal #1: ECD1A.CH Signal #2: ECD2B.CH
 Acq On : 11 Sep 2019 9:57
 Operator : SM/AJ
 Sample : K4684-01RE
 Misc :
 ALS Vial : 4 Sample Multiplier: 1

Instrument :
 ECD_0
 ClientSampleId :
 20841-20842

Integration File signal 1: autoint1.e
 Integration File signal 2: autoint2.e
 Quant Time: Sep 11 13:53:21 2019
 Quant Method : Z:\pestpcbsrv\HPCHEM1\ECD_0\methods\P0090719.M
 Quant Title : GC EXTRACTABLES
 QLast Update : Sun Sep 08 02:12:04 2019
 Response via : Initial Calibration
 Integrator: ChemStation 6890 Scale Mode: Small noise peaks clipped

Volume Inj. : 2 µl
 Signal #1 Phase : ZB-MR1 Signal #2 Phase: ZB-MR2
 Signal #1 Info : 30Mx0.32mmx 0.50µ Signal #2 Info : 30M x 0.32mm x 0.25µm

Compound	RT#1	RT#2	Resp#1	Resp#2	ng/ml	ng/ml

System Monitoring Compounds						
1) SA Tetrachlo...	4.378	3.534	668163	542114	16.103	17.650
2) SA Decachlor...	10.041	8.420	394864	320087	7.486	8.647
Target Compounds						
3) L1 AR-1016-1	5.474	0.000	21134	0	12.989	N.D. #
9) L2 AR-1221-2	4.684	3.824	10096	7469	28.921	24.970
10) L2 AR-1221-3	4.684	0.000	10096	0	8.840	N.D. #
11) L3 AR-1232-1	4.684	0.000	10096	0	8.172	N.D. #
12) L3 AR-1232-2	5.256	0.000	19661	0	28.837	N.D. #
16) L4 AR-1242-1	5.474	0.000	21134	0	17.543	N.D. #
21) L5 AR-1248-1	5.474	0.000	21134	0	23.032	N.D. #
30) L6 AR-1254-5	7.668	0.000	4299	0	1.580	N.D. #
35) L7 AR-1260-5	8.274	7.071	22199	26004	3.952	5.677 #
37) L8 AR-1262-2	8.274	7.071	22199	26004	3.792	5.728 #
38) L8 AR-1262-3	8.597	7.411	1836	20026	0.459	10.565 #
39) L8 AR-1262-4	0.000	7.411	0	20026	N.D.	5.840 #
41) L9 AR-1268-1	8.597	7.411	1836	20026	0.266	3.943 #
42) L9 AR-1268-2	0.000	7.411	0	20026	N.D.	4.311 #

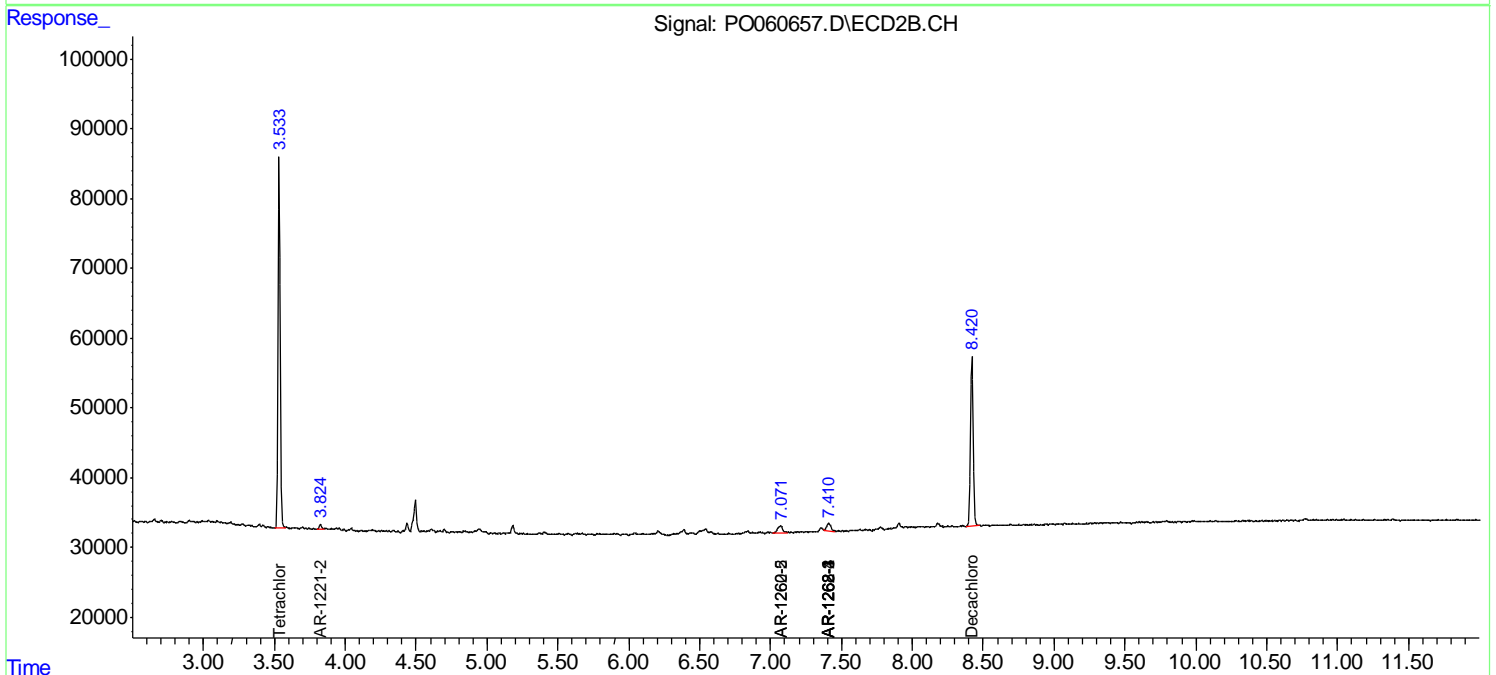
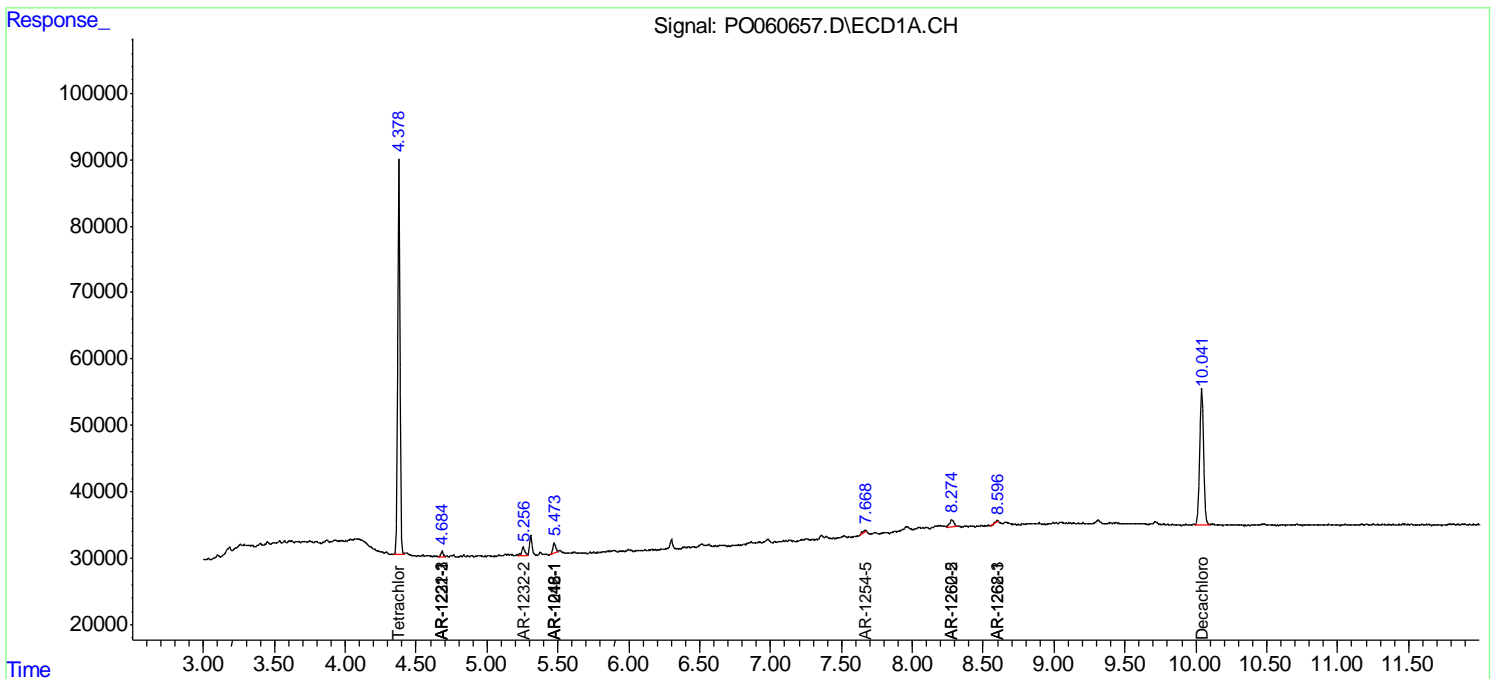
(f)=RT Delta > 1/2 Window (#)=Amounts differ by > 25% (m)=manual int.

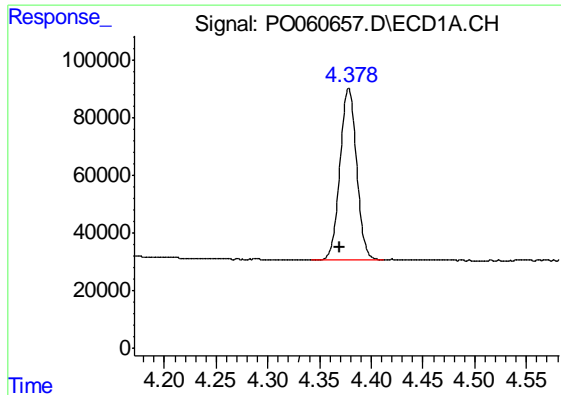
Data Path : Z:\pestpcbsrv\HPCHEM1\ECD_O\Data\P0091119\
 Data File : P0060657.D
 Signal(s) : Signal #1: ECD1A.CH Signal #2: ECD2B.CH
 Acq On : 11 Sep 2019 9:57
 Operator : SM/AJ
 Sample : K4684-01RE
 Misc :
 ALS Vial : 4 Sample Multiplier: 1

Instrument :
 ECD_O
 ClientSampled :
 20841-20842

Integration File signal 1: autoint1.e
 Integration File signal 2: autoint2.e
 Quant Time: Sep 11 13:53:21 2019
 Quant Method : Z:\pestpcbsrv\HPCHEM1\ECD_O\methods\P0090719.M
 Quant Title : GC EXTRACTABLES
 QLast Update : Sun Sep 08 02:12:04 2019
 Response via : Initial Calibration
 Integrator: ChemStation 6890 Scale Mode: Small noise peaks clipped

Volume Inj. : 2 µl
 Signal #1 Phase : ZB-MR1 Signal #2 Phase: ZB-MR2
 Signal #1 Info : 30Mx0.32mmx 0.50µ Signal #2 Info : 30M x 0.32mm x 0.25µm

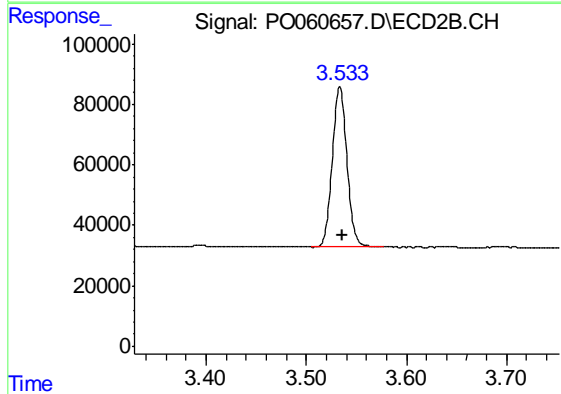




#1 Tetrachloro-m-xylene

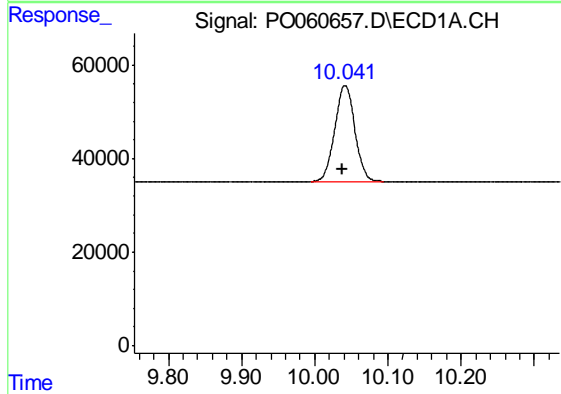
R.T.: 4.378 min
 Delta R.T.: 0.009 min
 Response: 668163
 Conc: 16.10 ng/ml

Instrument :
 ECD_O
 ClientSampleId :
 20841-20842



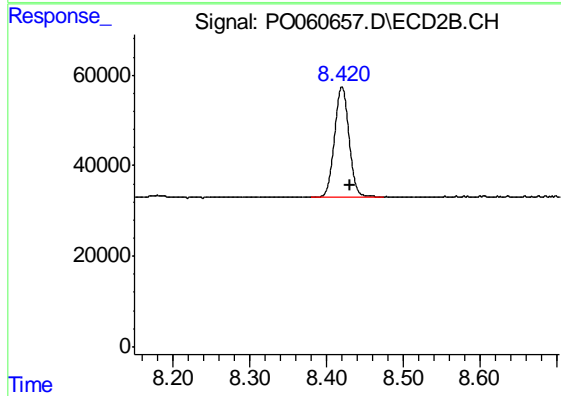
#1 Tetrachloro-m-xylene

R.T.: 3.534 min
 Delta R.T.: -0.003 min
 Response: 542114
 Conc: 17.65 ng/ml



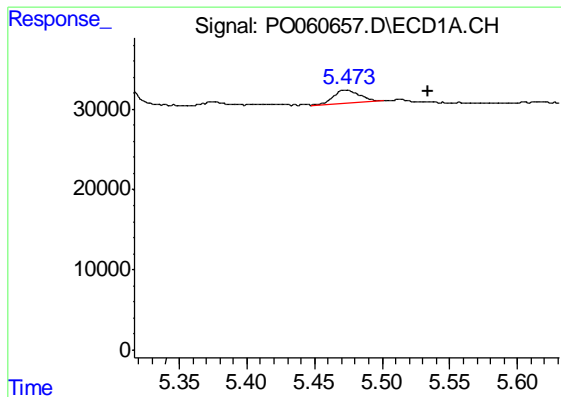
#2 Decachlorobiphenyl

R.T.: 10.041 min
 Delta R.T.: 0.004 min
 Response: 394864
 Conc: 7.49 ng/ml



#2 Decachlorobiphenyl

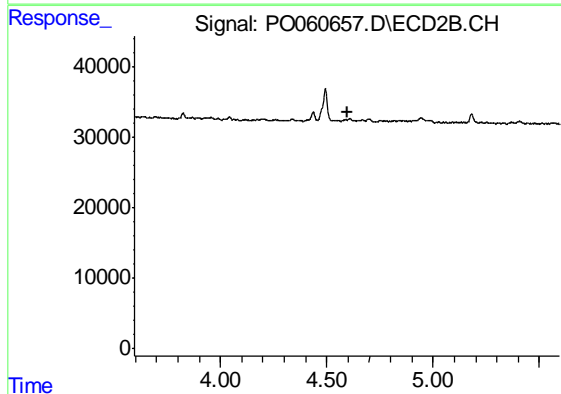
R.T.: 8.420 min
 Delta R.T.: -0.011 min
 Response: 320087
 Conc: 8.65 ng/ml



#3 AR-1016-1

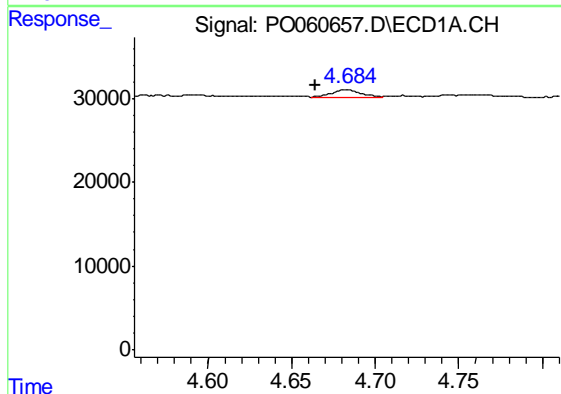
R.T.: 5.474 min
 Delta R.T.: -0.060 min
 Response: 21134
 Conc: 12.99 ng/ml

Instrument :
 ECD_O
 ClientSampleId :
 20841-20842



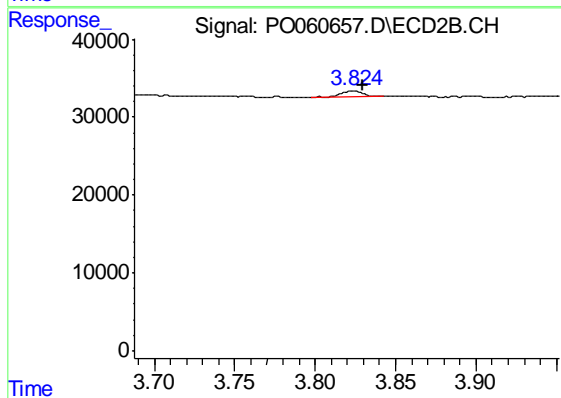
#3 AR-1016-1

R.T.: 0.000 min
 Exp R.T. : 4.595 min
 Response: 0
 Conc: N.D.



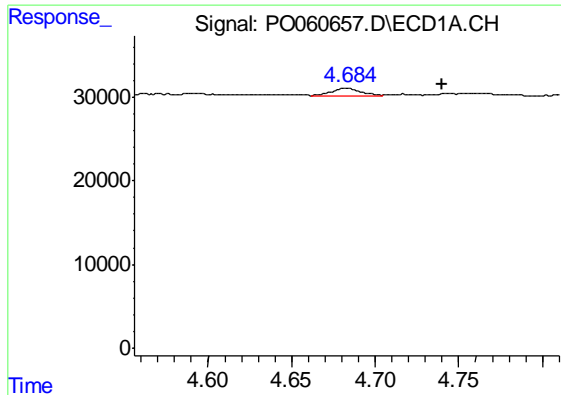
#9 AR-1221-2

R.T.: 4.684 min
 Delta R.T.: 0.020 min
 Response: 10096
 Conc: 28.92 ng/ml



#9 AR-1221-2

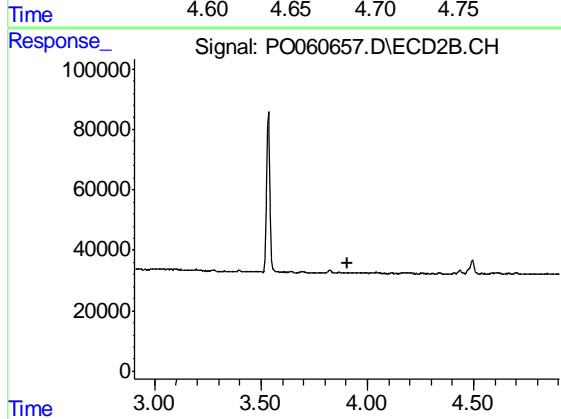
R.T.: 3.824 min
 Delta R.T.: -0.005 min
 Response: 7469
 Conc: 24.97 ng/ml



#10 AR-1221-3

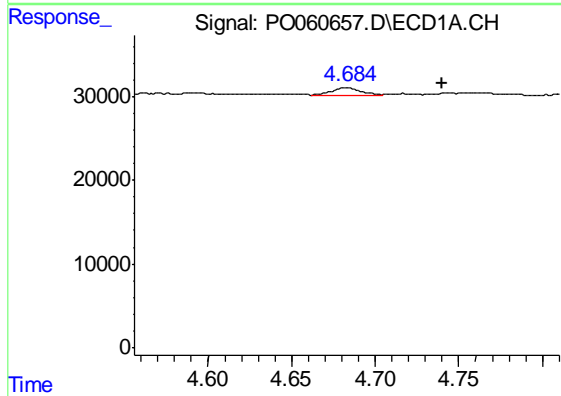
R.T.: 4.684 min
 Delta R.T.: -0.056 min
 Response: 10096
 Conc: 8.84 ng/ml

Instrument :
 ECD_O
 ClientSampled :
 20841-20842



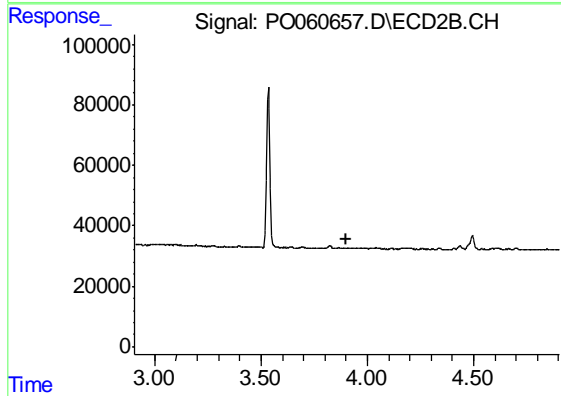
#10 AR-1221-3

R.T.: 0.000 min
 Exp R.T. : 3.904 min
 Response: 0
 Conc: N.D.



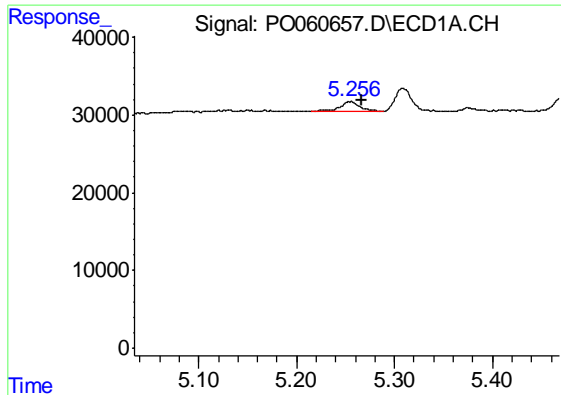
#11 AR-1232-1

R.T.: 4.684 min
 Delta R.T.: -0.056 min
 Response: 10096
 Conc: 8.17 ng/ml



#11 AR-1232-1

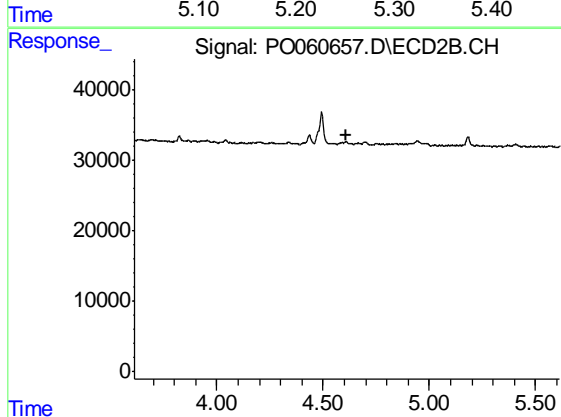
R.T.: 0.000 min
 Exp R.T. : 3.904 min
 Response: 0
 Conc: N.D.



#12 AR-1232-2

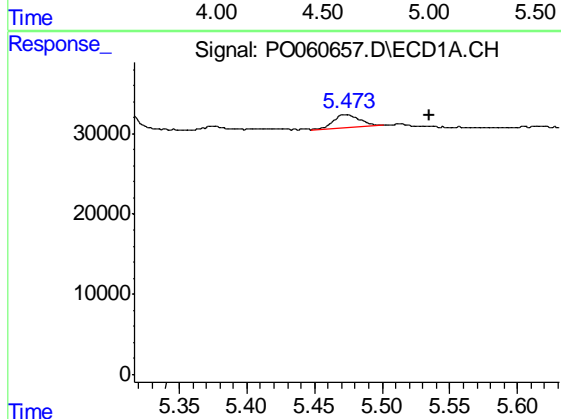
R.T.: 5.256 min
 Delta R.T.: -0.011 min
 Response: 19661
 Conc: 28.84 ng/ml

Instrument :
 ECD_O
 ClientSampled :
 20841-20842



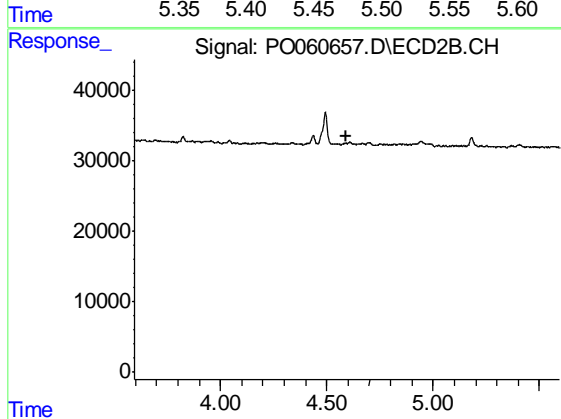
#12 AR-1232-2

R.T.: 0.000 min
 Exp R.T. : 4.612 min
 Response: 0
 Conc: N.D.



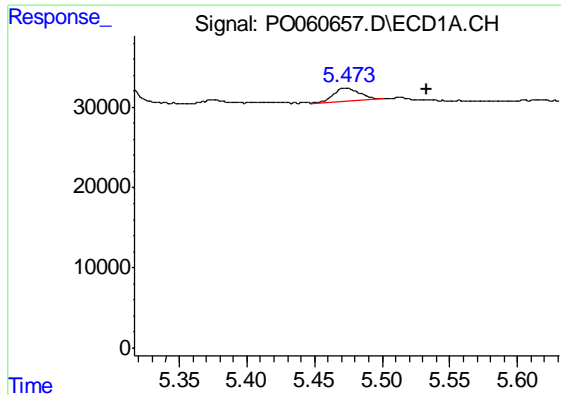
#16 AR-1242-1

R.T.: 5.474 min
 Delta R.T.: -0.061 min
 Response: 21134
 Conc: 17.54 ng/ml



#16 AR-1242-1

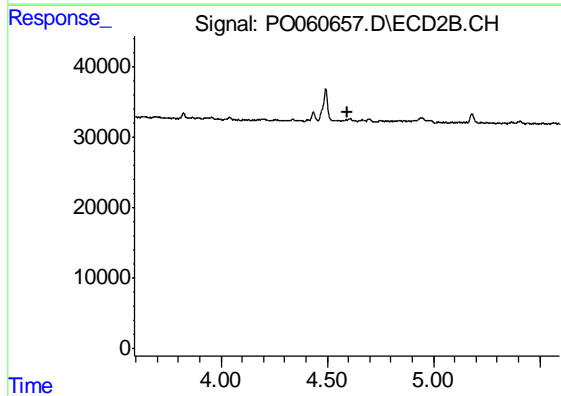
R.T.: 0.000 min
 Exp R.T. : 4.595 min
 Response: 0
 Conc: N.D.



#21 AR-1248-1

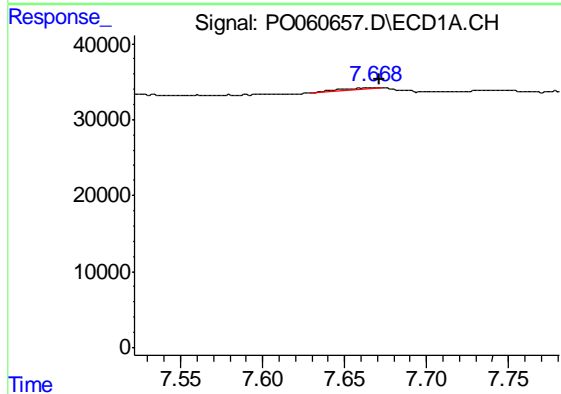
R.T.: 5.474 min
 Delta R.T.: -0.059 min
 Response: 21134
 Conc: 23.03 ng/ml

Instrument :
 ECD_O
 ClientSampled :
 20841-20842



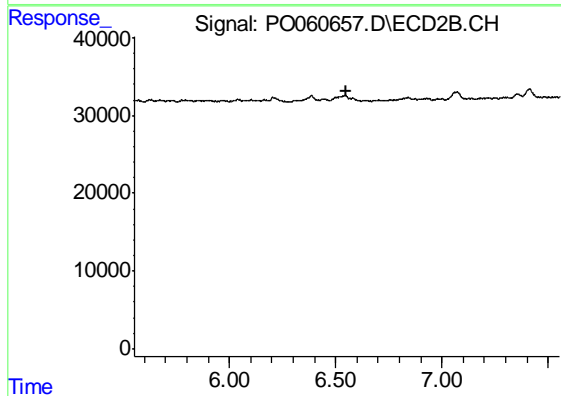
#21 AR-1248-1

R.T.: 0.000 min
 Exp R.T. : 4.593 min
 Response: 0
 Conc: N.D.



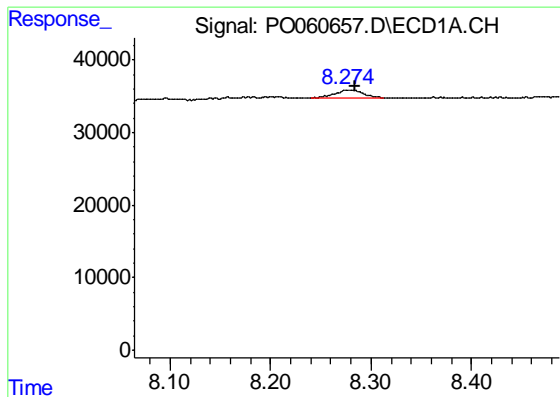
#30 AR-1254-5

R.T.: 7.668 min
 Delta R.T.: -0.003 min
 Response: 4299
 Conc: 1.58 ng/ml



#30 AR-1254-5

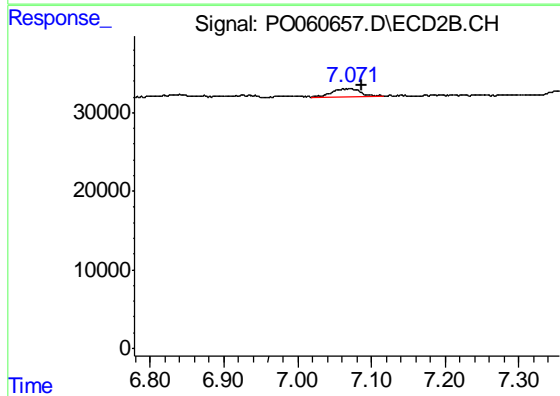
R.T.: 0.000 min
 Exp R.T. : 6.553 min
 Response: 0
 Conc: N.D.



#35 AR-1260-5

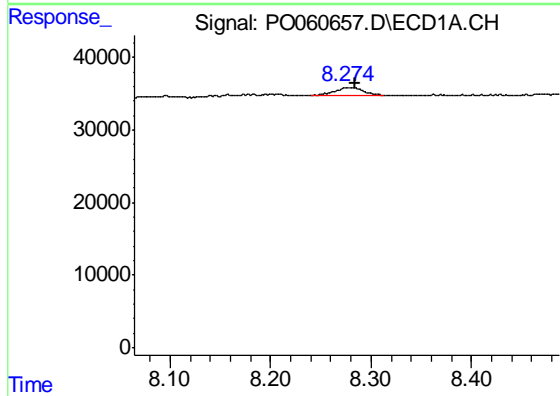
R.T.: 8.274 min
 Delta R.T.: -0.010 min
 Response: 22199
 Conc: 3.95 ng/ml

Instrument :
 ECD_O
 ClientSampleId :
 20841-20842



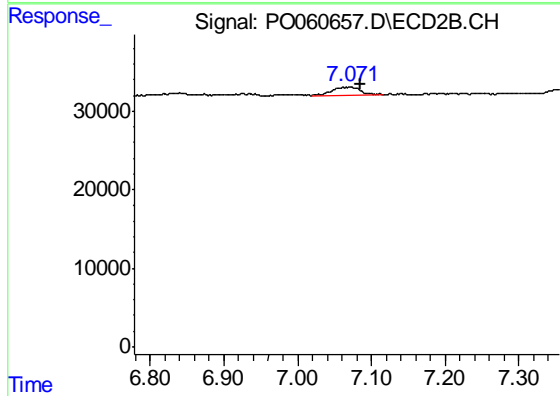
#35 AR-1260-5

R.T.: 7.071 min
 Delta R.T.: -0.015 min
 Response: 26004
 Conc: 5.68 ng/ml



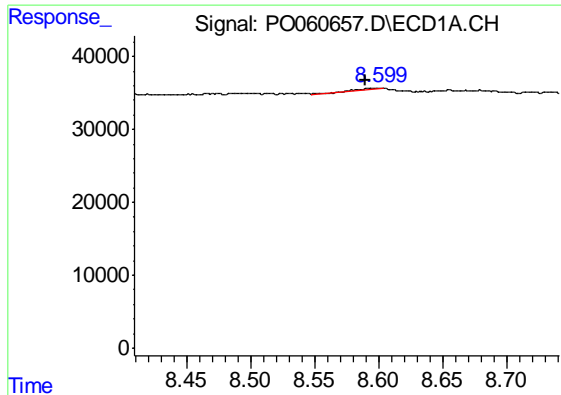
#37 AR-1262-2

R.T.: 8.274 min
 Delta R.T.: -0.010 min
 Response: 22199
 Conc: 3.79 ng/ml



#37 AR-1262-2

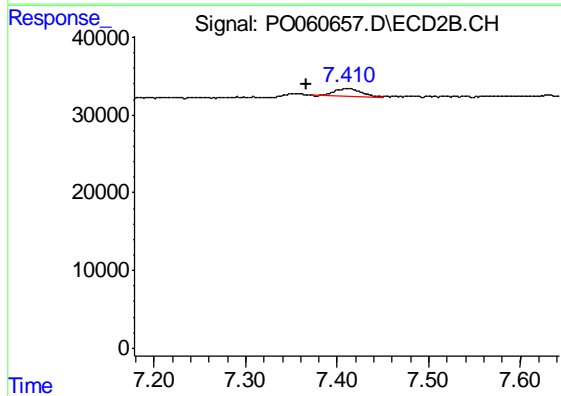
R.T.: 7.071 min
 Delta R.T.: -0.014 min
 Response: 26004
 Conc: 5.73 ng/ml



#38 AR-1262-3

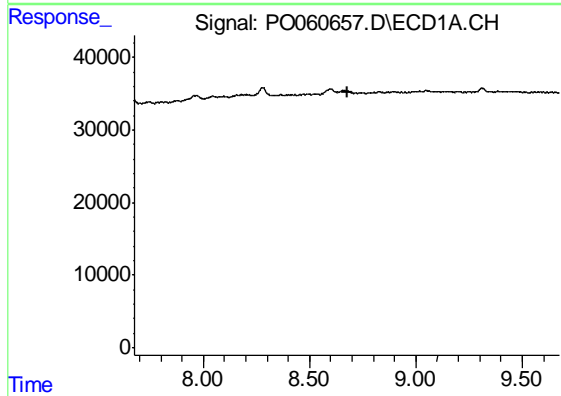
R.T.: 8.597 min
 Delta R.T.: 0.007 min
 Response: 1836
 Conc: 0.46 ng/ml

Instrument :
 ECD_O
 ClientSampleId :
 20841-20842



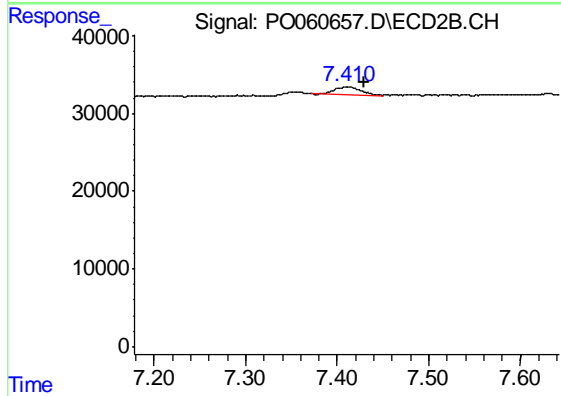
#38 AR-1262-3

R.T.: 7.411 min
 Delta R.T.: 0.043 min
 Response: 20026
 Conc: 10.56 ng/ml



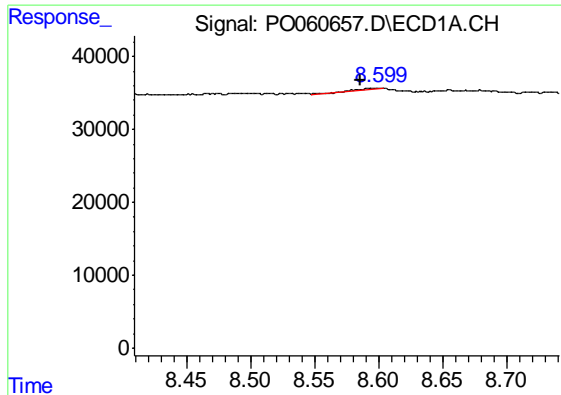
#39 AR-1262-4

R.T.: 0.000 min
 Exp R.T. : 8.676 min
 Response: 0
 Conc: N.D.



#39 AR-1262-4

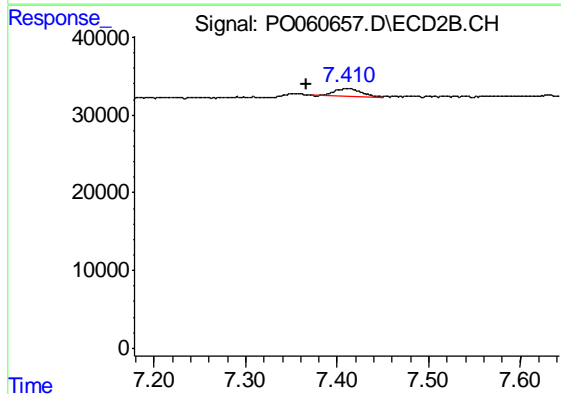
R.T.: 7.411 min
 Delta R.T.: -0.019 min
 Response: 20026
 Conc: 5.84 ng/ml



#41 AR-1268-1

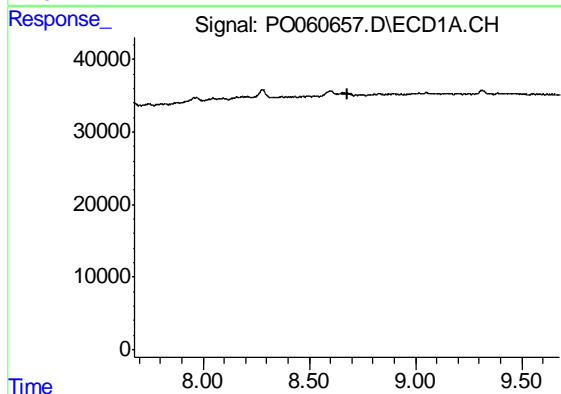
R.T.: 8.597 min
 Delta R.T.: 0.011 min
 Response: 1836
 Conc: 0.27 ng/ml

Instrument :
 ECD_O
 ClientSampleId :
 20841-20842



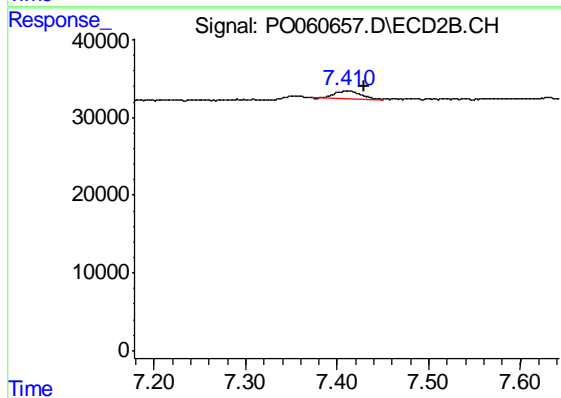
#41 AR-1268-1

R.T.: 7.411 min
 Delta R.T.: 0.044 min
 Response: 20026
 Conc: 3.94 ng/ml



#42 AR-1268-2

R.T.: 0.000 min
 Exp R.T. : 8.677 min
 Response: 0
 Conc: N.D.



#42 AR-1268-2

R.T.: 7.411 min
 Delta R.T.: -0.019 min
 Response: 20026
 Conc: 4.31 ng/ml