

Data Path : Z:\pestpcbsrv\HPCHEM1\ECD\_0\Data\P0091123\  
 Data File : P0097882.D  
 Signal(s) : Signal #1: ECD1A.ch Signal #2: ECD2B.ch  
 Acq On : 11 Sep 2023 13:58  
 Operator : YP/AJ  
 Sample : AR1242CCC500  
 Misc :  
 ALS Vial : 4 Sample Multiplier: 1

Instrument :  
 ECD\_0  
 ClientSampleId :

Integration File signal 1: autoint1.e  
 Integration File signal 2: autoint2.e  
 Quant Time: Sep 11 15:55:01 2023  
 Quant Method : Z:\pestpcbsrv\HPCHEM1\ECD\_0\methods\P0090623.M  
 Quant Title : GC EXTRACTABLES  
 QLast Update : Thu Sep 07 02:56:18 2023  
 Response via : Initial Calibration  
 Integrator: ChemStation

Volume Inj. : 2 µl  
 Signal #1 Phase : ZB-MR1 Signal #2 Phase: ZB-MR2  
 Signal #1 Info : 30Mx0.32mmx 0.50µ Signal #2 Info : 30M x 0.32mm x 0.25µm

Compound	RT#1	RT#2	Resp#1	Resp#2	ng/ml	ng/ml
System Monitoring Compounds						
1) SA Tetrachlo...	4.441	3.622	186.4E6	49074955	46.781	51.243
2) SA Decachlor...	10.287	8.655	92747969	43958016	49.639	51.450
Target Compounds						
3) L1 AR-1016-1	5.618	4.711	45142284	14306861	418.061	444.809
4) L1 AR-1016-2	5.641	4.730	66770520	19792676	412.601	435.716
5) L1 AR-1016-3	5.704	4.907	41576989	10827124	417.551	444.703
6) L1 AR-1016-4	5.803	4.949	32712790	8928566	414.848	424.988
7) L1 AR-1016-5	6.100	5.163	34141030	11954515	415.875	430.136
8) L2 AR-1221-1	4.647	3.837	6981026	1737951	146.526	143.930
9) L2 AR-1221-2	4.739	3.923	9575097	2287268	269.480	268.140
10) L2 AR-1221-3	4.815	3.999	30209187	7896346	291.591	294.677
11) L3 AR-1232-1	4.815	3.999	30209187	7896346	351.817	357.987
12) L3 AR-1232-2	5.348	4.730	38437796	19792676	879.643	964.736
13) L3 AR-1232-3	5.641	4.907	66770520	10827124	921.282	995.768
14) L3 AR-1232-4	5.803	4.991	32712790	11323452	948.631	1042.948
15) L3 AR-1232-5	5.894	5.163	30658240	11954515	981.407	986.066
16) L4 AR-1242-1	5.618	4.711	45142284	14306861	484.661	509.810
17) L4 AR-1242-2	5.641	4.730	66770520	19792676	475.917	498.700
18) L4 AR-1242-3	5.704	4.907	41576989	10827124	480.405	512.357
19) L4 AR-1242-4	5.803	4.991	32712790	11323452	482.341	494.074
20) L4 AR-1242-5	6.546	5.517	33230110	13257866	472.237	508.914
21) L5 AR-1248-1	5.618	4.711	45142284	14306861	665.290	696.451
22) L5 AR-1248-2	5.894	4.949	30658240	8928566	283.497	293.051
23) L5 AR-1248-3	6.100	4.991	34141030	11323452	304.187	355.557
24) L5 AR-1248-4	6.507	5.163	30563244	11954515	295.642	319.447
25) L5 AR-1248-5	6.546	5.558	33230110	11278693	298.101	338.473
26) L6 AR-1254-1	6.479	5.517	22977269	13257866	187.420	243.877 #
27) L6 AR-1254-2	6.705	5.665	26993984	3696953	150.481	76.773 #
28) L6 AR-1254-3	7.071	6.071	11888828	4299423	67.135	58.194
29) L6 AR-1254-4	7.360	6.301	7473909	3238034	69.435	81.702
30) L6 AR-1254-5	7.783	6.720	1932872	1122708	16.076	18.229
31) L7 AR-1260-1	7.237	6.217	1270757	1659088	8.992	31.183 #
32) L7 AR-1260-2	7.500	6.389	2333847	740338	15.440	11.823
33) L7 AR-1260-3	7.865	6.542	149220	700824	1.317	12.153 #
34) L7 AR-1260-4	8.074	7.019	1169313	68569	9.836	1.462 #
35) L7 AR-1260-5	8.401	7.265	305011	145529	1.490	1.468
36) L8 AR-1262-1	7.865	6.819	149220	110580	0.981	4.081 #
37) L8 AR-1262-2	8.401	7.019	305011	68569	1.397	1.177
38) L8 AR-1262-3	8.754	7.551	276676	135506	1.788	3.106 #
39) L8 AR-1262-4	8.826	7.604	31007	129310	0.369	1.700 #
40) L8 AR-1262-5	9.515	8.106	50378	40419	0.699	1.288 #
41) L9 AR-1268-1	8.754	7.551	276676	135506	0.975	1.029

Data Path : Z:\pestpcbsrv\HPCHEM1\ECD\_0\Data\P0091123\  
 Data File : P0097882.D  
 Signal(s) : Signal #1: ECD1A.ch Signal #2: ECD2B.ch  
 Acq On : 11 Sep 2023 13:58  
 Operator : YP/AJ  
 Sample : AR1242CCC500  
 Misc :  
 ALS Vial : 4 Sample Multiplier: 1

Instrument :  
 ECD\_0  
 ClientSampleId :

Integration File signal 1: autoint1.e  
 Integration File signal 2: autoint2.e  
 Quant Time: Sep 11 15:55:01 2023  
 Quant Method : Z:\pestpcbsrv\HPCHEM1\ECD\_0\methods\P0090623.M  
 Quant Title : GC EXTRACTABLES  
 QLast Update : Thu Sep 07 02:56:18 2023  
 Response via : Initial Calibration  
 Integrator: ChemStation

Volume Inj. : 2 µl  
 Signal #1 Phase : ZB-MR1 Signal #2 Phase: ZB-MR2  
 Signal #1 Info : 30Mx0.32mmx 0.50µ Signal #2 Info : 30M x 0.32mm x 0.25µm

	Compound	RT#1	RT#2	Resp#1	Resp#2	ng/ml	ng/ml
42)	L9 AR-1268-2	8.840	7.604	54530	129310	0.213	1.122 #
43)	L9 AR-1268-3	9.068	7.911	150570	106111	0.674	3.838 #
44)	L9 AR-1268-4	9.515	8.106	50378	40419	0.616	1.147 #
45)	L9 AR-1268-5	9.933	8.398	612094	395858	0.923	1.263 #

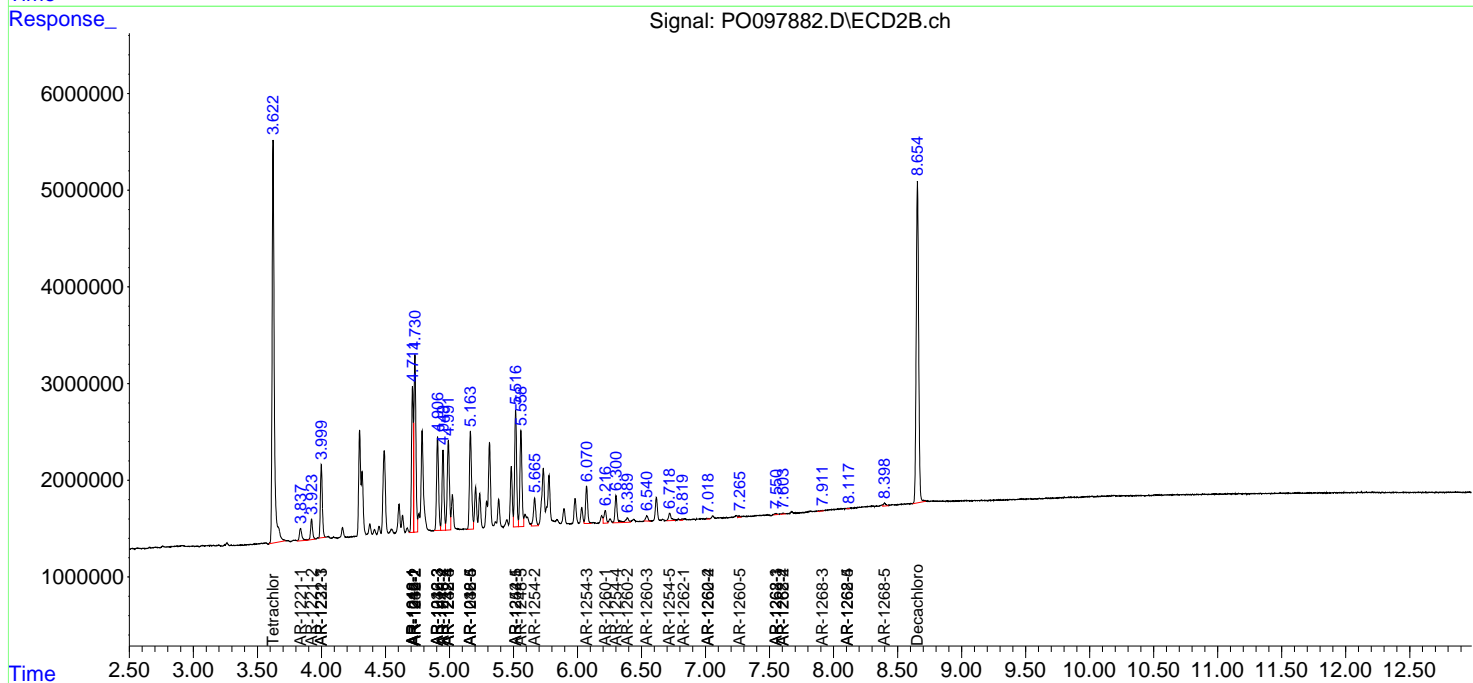
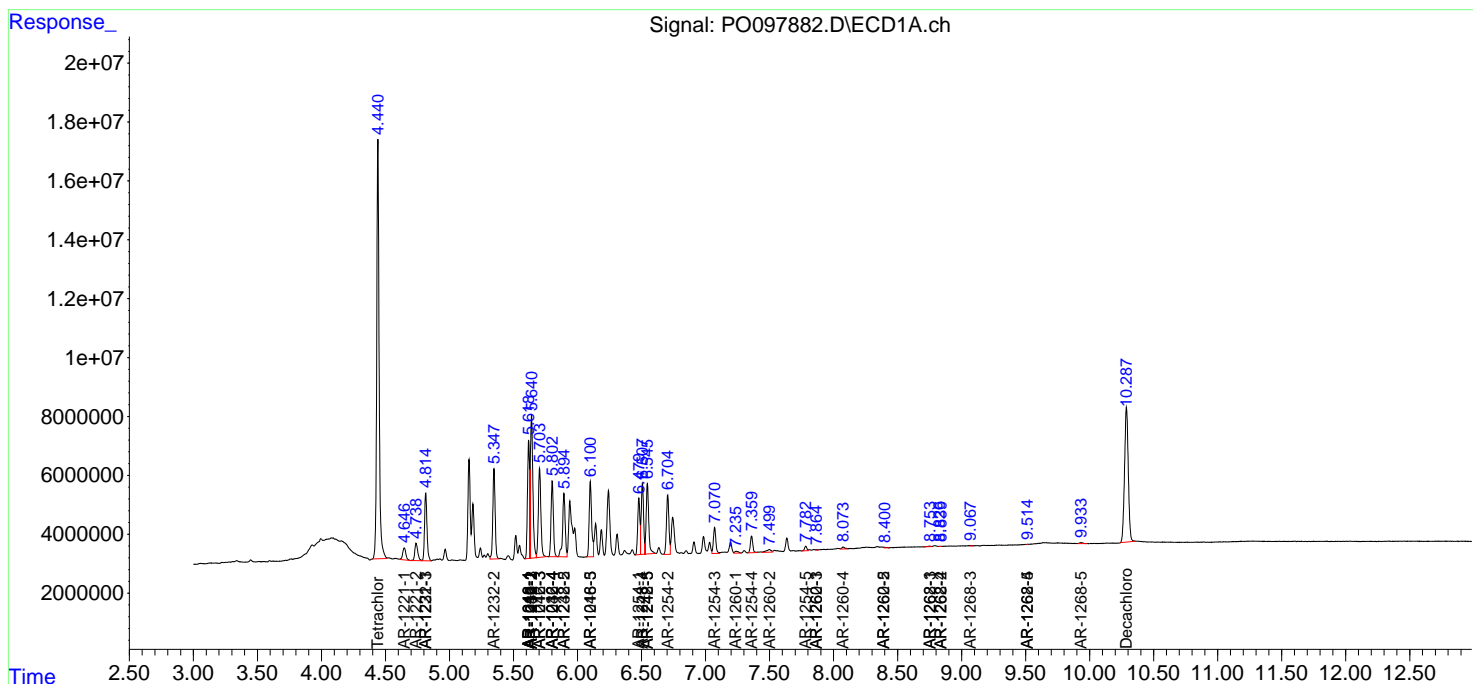
(f)=RT Delta > 1/2 Window (#)=Amounts differ by > 25% (m)=manual int.

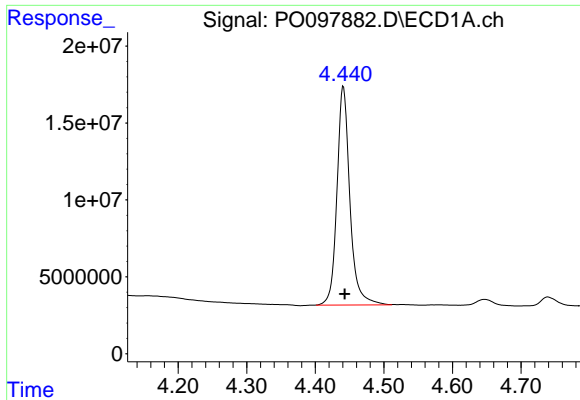
Data Path : Z:\pestpcbsrv\HPCHEM1\ECD\_O\Data\P0091123\  
 Data File : P0097882.D  
 Signal(s) : Signal #1: ECD1A.ch Signal #2: ECD2B.ch  
 Acq On : 11 Sep 2023 13:58  
 Operator : YP/AJ  
 Sample : AR1242CCC500  
 Misc :  
 ALS Vial : 4 Sample Multiplier: 1

Instrument :  
 ECD\_O  
 ClientSampleId :

Integration File signal 1: autoint1.e  
 Integration File signal 2: autoint2.e  
 Quant Time: Sep 11 15:55:01 2023  
 Quant Method : Z:\pestpcbsrv\HPCHEM1\ECD\_O\methods\P0090623.M  
 Quant Title : GC EXTRACTABLES  
 QLast Update : Thu Sep 07 02:56:18 2023  
 Response via : Initial Calibration  
 Integrator: ChemStation

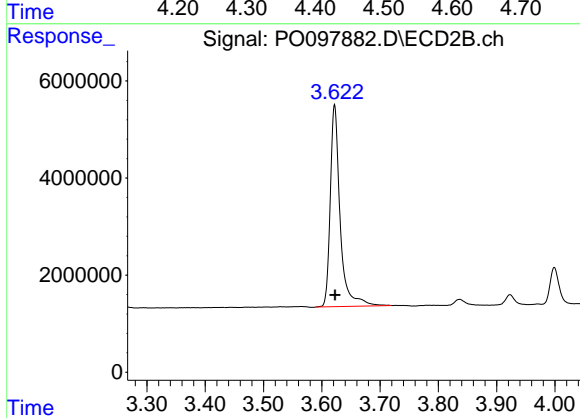
Volume Inj. : 2 µl  
 Signal #1 Phase : ZB-MR1 Signal #2 Phase: ZB-MR2  
 Signal #1 Info : 30Mx0.32mmx 0.50µ Signal #2 Info : 30M x 0.32mm x 0.25µm



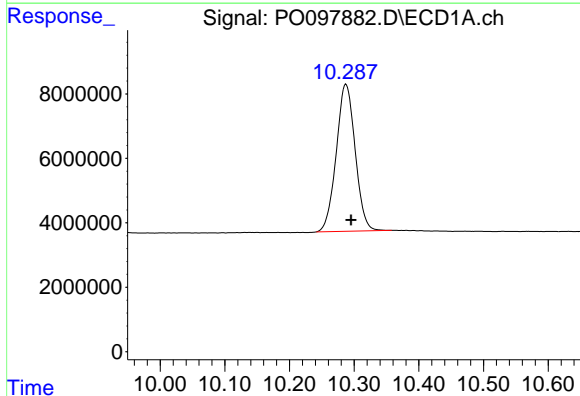


#1 Tetrachloro-m-xylene  
 R.T.: 4.441 min  
 Delta R.T.: -0.002 min  
 Response: 186377836  
 Conc: 46.78 ng/ml

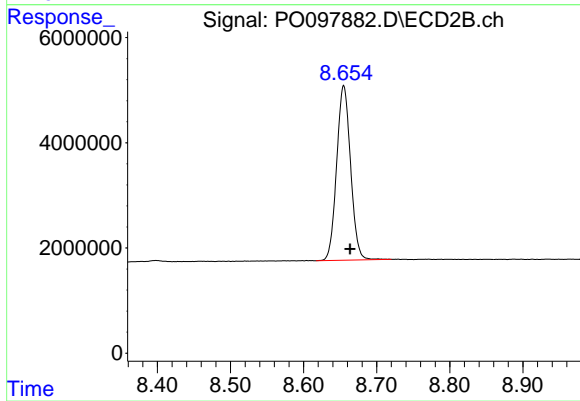
Instrument :  
 ECD\_O  
 ClientSampleId :



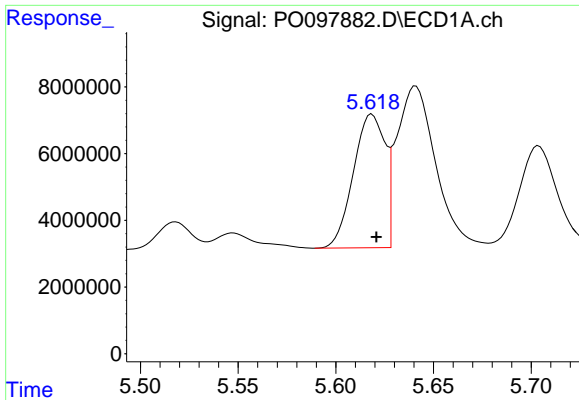
#1 Tetrachloro-m-xylene  
 R.T.: 3.622 min  
 Delta R.T.: 0.000 min  
 Response: 49074955  
 Conc: 51.24 ng/ml



#2 Decachlorobiphenyl  
 R.T.: 10.287 min  
 Delta R.T.: -0.008 min  
 Response: 92747969  
 Conc: 49.64 ng/ml



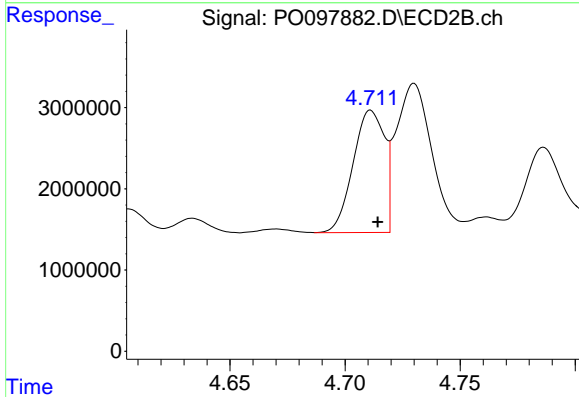
#2 Decachlorobiphenyl  
 R.T.: 8.655 min  
 Delta R.T.: -0.009 min  
 Response: 43958016  
 Conc: 51.45 ng/ml



#3 AR-1016-1

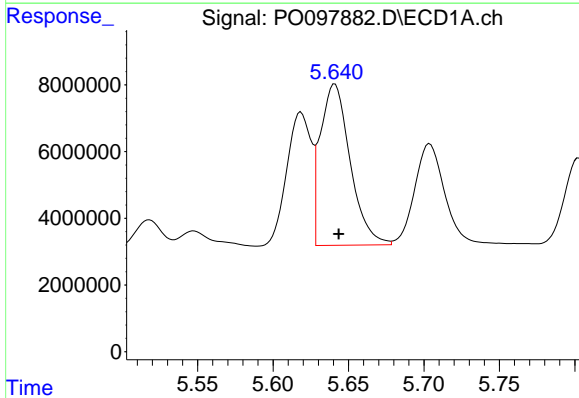
R.T.: 5.618 min  
 Delta R.T.: -0.002 min  
 Response: 45142284  
 Conc: 418.06 ng/ml

Instrument :  
 ECD\_O  
 ClientSampleId :



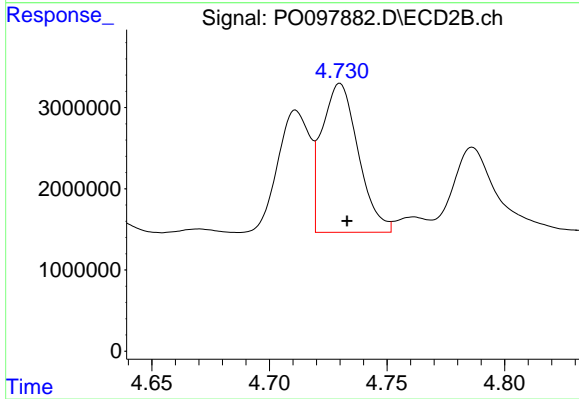
#3 AR-1016-1

R.T.: 4.711 min  
 Delta R.T.: -0.003 min  
 Response: 14306861  
 Conc: 444.81 ng/ml



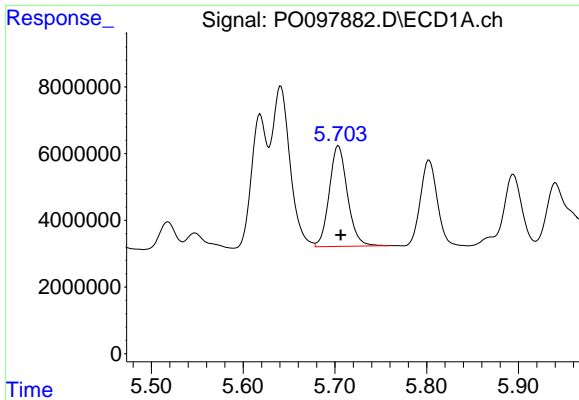
#4 AR-1016-2

R.T.: 5.641 min  
 Delta R.T.: -0.002 min  
 Response: 66770520  
 Conc: 412.60 ng/ml



#4 AR-1016-2

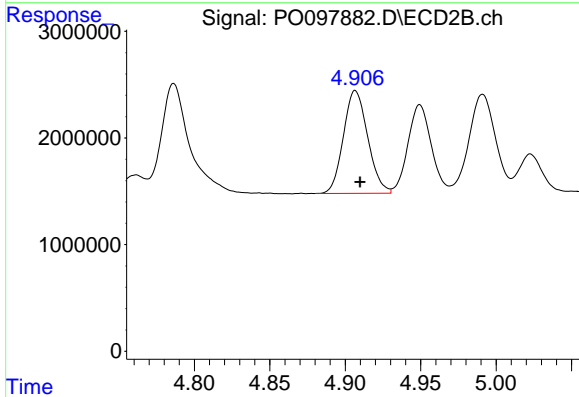
R.T.: 4.730 min  
 Delta R.T.: -0.003 min  
 Response: 19792676  
 Conc: 435.72 ng/ml



#5 AR-1016-3

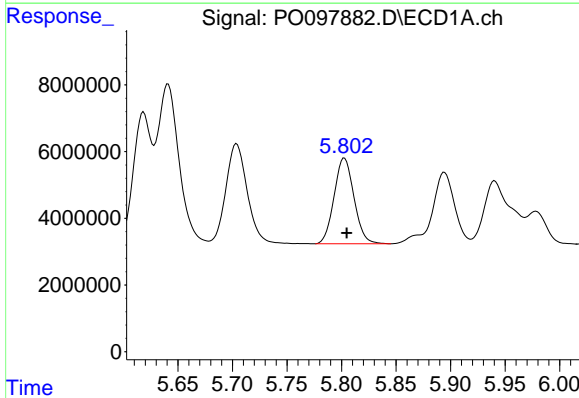
R.T.: 5.704 min  
 Delta R.T.: -0.002 min  
 Response: 41576989  
 Conc: 417.55 ng/ml

Instrument :  
 ECD\_O  
 ClientSampleId :



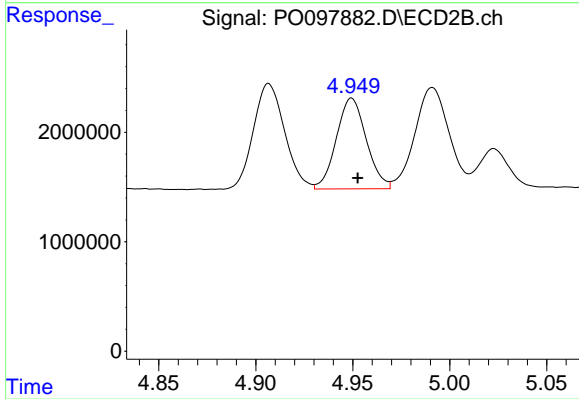
#5 AR-1016-3

R.T.: 4.907 min  
 Delta R.T.: -0.003 min  
 Response: 10827124  
 Conc: 444.70 ng/ml



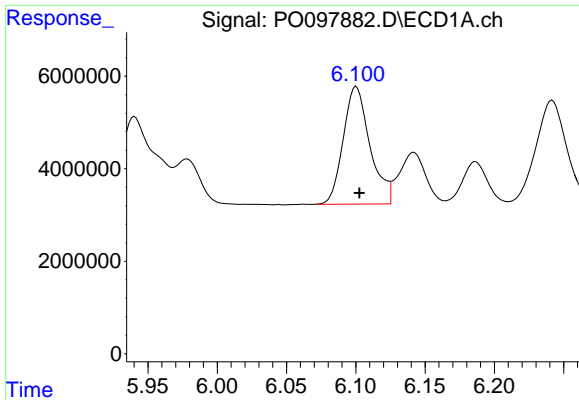
#6 AR-1016-4

R.T.: 5.803 min  
 Delta R.T.: -0.002 min  
 Response: 32712790  
 Conc: 414.85 ng/ml



#6 AR-1016-4

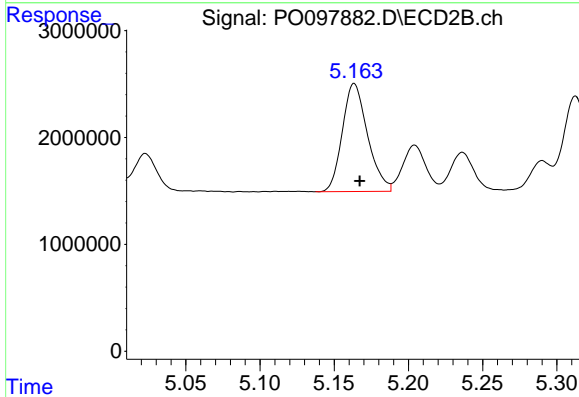
R.T.: 4.949 min  
 Delta R.T.: -0.003 min  
 Response: 8928566  
 Conc: 424.99 ng/ml



#7 AR-1016-5

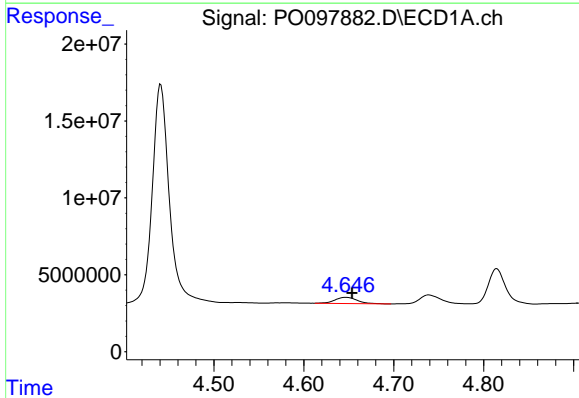
R.T.: 6.100 min  
 Delta R.T.: -0.002 min  
 Response: 34141030  
 Conc: 415.87 ng/ml

Instrument :  
 ECD\_O  
 ClientSampleId :



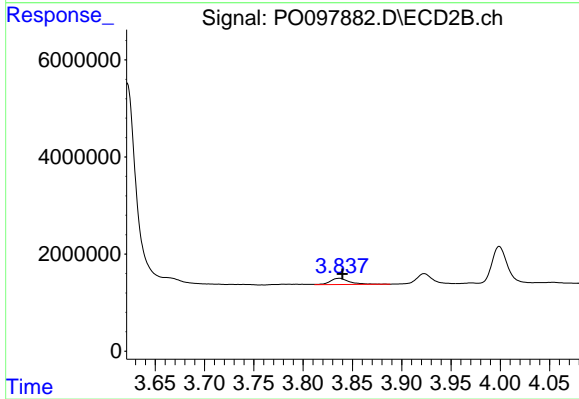
#7 AR-1016-5

R.T.: 5.163 min  
 Delta R.T.: -0.004 min  
 Response: 11954515  
 Conc: 430.14 ng/ml



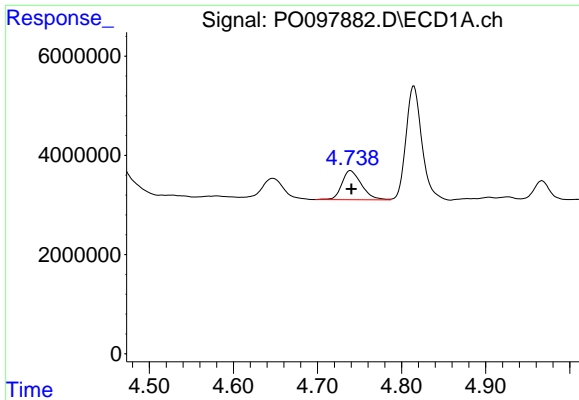
#8 AR-1221-1

R.T.: 4.647 min  
 Delta R.T.: -0.007 min  
 Response: 6981026  
 Conc: 146.53 ng/ml



#8 AR-1221-1

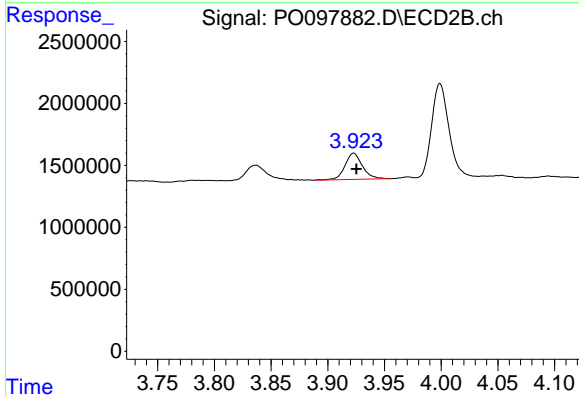
R.T.: 3.837 min  
 Delta R.T.: -0.003 min  
 Response: 1737951  
 Conc: 143.93 ng/ml



#9 AR-1221-2

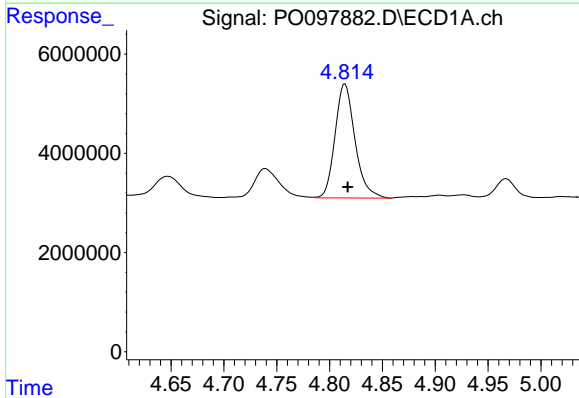
R.T.: 4.739 min  
 Delta R.T.: -0.001 min  
 Response: 9575097  
 Conc: 269.48 ng/ml

Instrument :  
 ECD\_O  
 ClientSampleId :



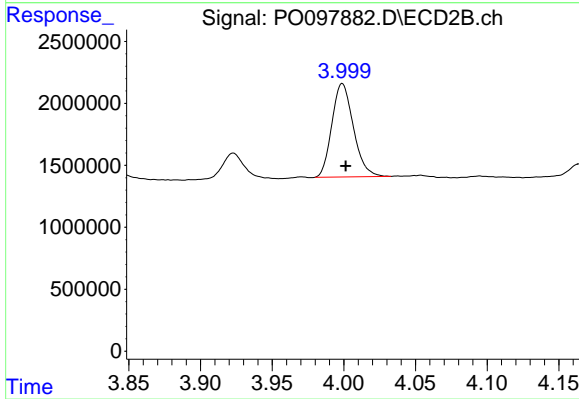
#9 AR-1221-2

R.T.: 3.923 min  
 Delta R.T.: -0.002 min  
 Response: 2287268  
 Conc: 268.14 ng/ml



#10 AR-1221-3

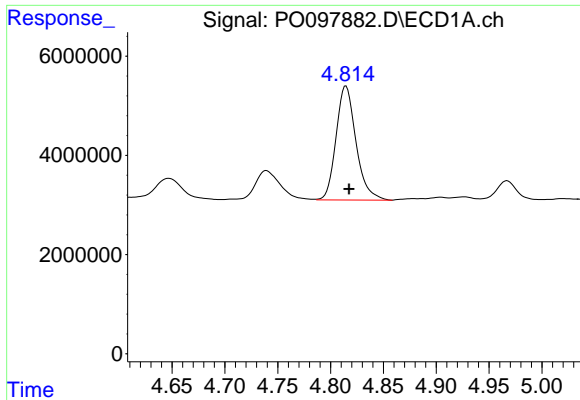
R.T.: 4.815 min  
 Delta R.T.: -0.003 min  
 Response: 30209187  
 Conc: 291.59 ng/ml



#10 AR-1221-3

R.T.: 3.999 min  
 Delta R.T.: -0.002 min  
 Response: 7896346  
 Conc: 294.68 ng/ml

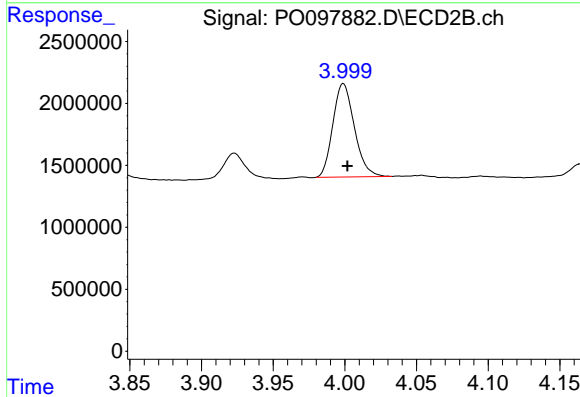




#11 AR-1232-1

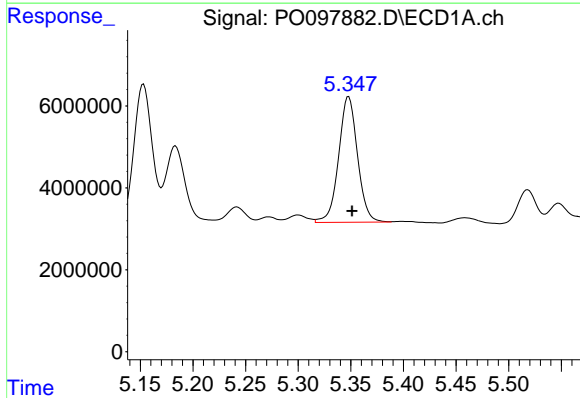
R.T.: 4.815 min  
 Delta R.T.: -0.003 min  
 Response: 30209187  
 Conc: 351.82 ng/ml

Instrument :  
 ECD\_O  
 ClientSampleId :



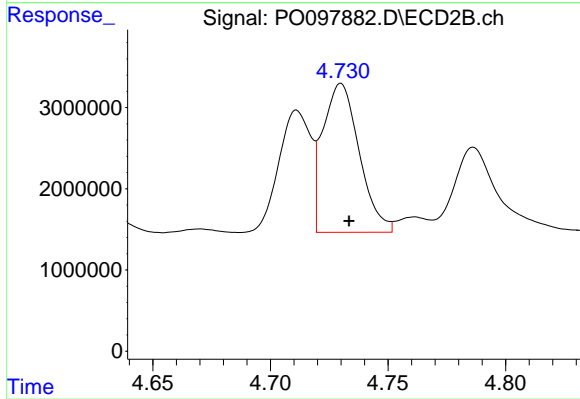
#11 AR-1232-1

R.T.: 3.999 min  
 Delta R.T.: -0.003 min  
 Response: 7896346  
 Conc: 357.99 ng/ml



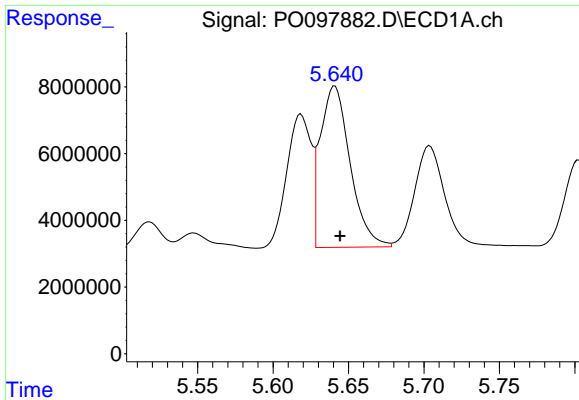
#12 AR-1232-2

R.T.: 5.348 min  
 Delta R.T.: -0.003 min  
 Response: 38437796  
 Conc: 879.64 ng/ml



#12 AR-1232-2

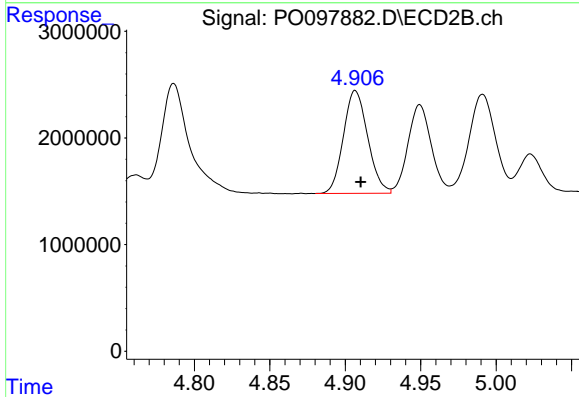
R.T.: 4.730 min  
 Delta R.T.: -0.003 min  
 Response: 19792676  
 Conc: 964.74 ng/ml



#13 AR-1232-3

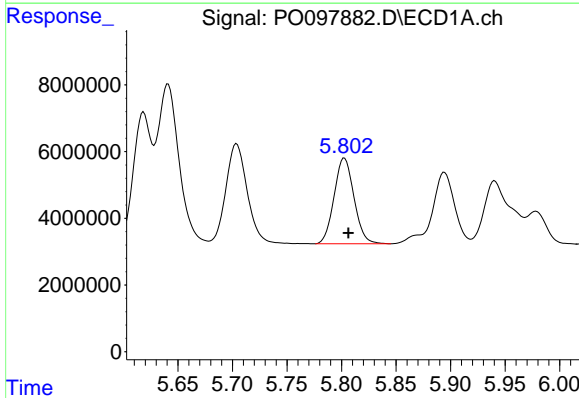
R.T.: 5.641 min  
 Delta R.T.: -0.003 min  
 Response: 66770520  
 Conc: 921.28 ng/ml

Instrument :  
 ECD\_O  
 ClientSampleId :



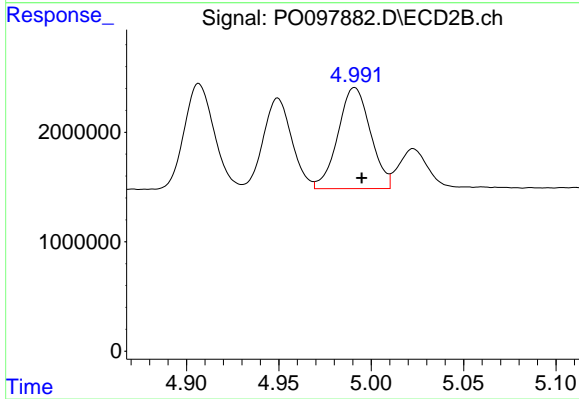
#13 AR-1232-3

R.T.: 4.907 min  
 Delta R.T.: -0.004 min  
 Response: 10827124  
 Conc: 995.77 ng/ml



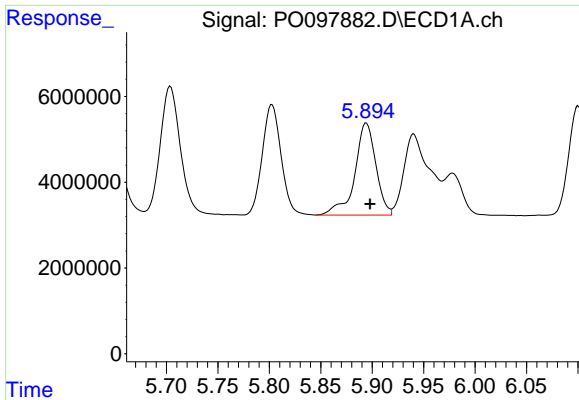
#14 AR-1232-4

R.T.: 5.803 min  
 Delta R.T.: -0.004 min  
 Response: 32712790  
 Conc: 948.63 ng/ml



#14 AR-1232-4

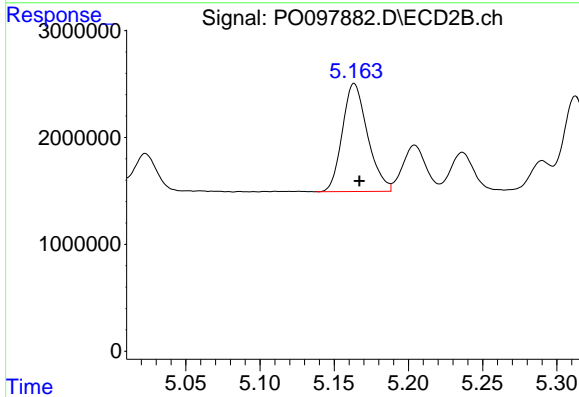
R.T.: 4.991 min  
 Delta R.T.: -0.004 min  
 Response: 11323452  
 Conc: 1042.95 ng/ml



#15 AR-1232-5

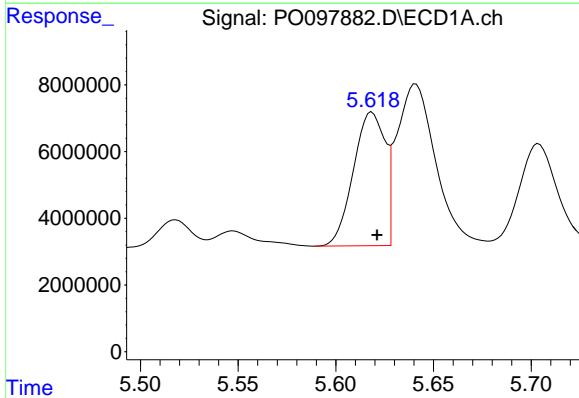
R.T.: 5.894 min  
 Delta R.T.: -0.004 min  
 Response: 30658240  
 Conc: 981.41 ng/ml

Instrument :  
 ECD\_O  
 ClientSampleId :



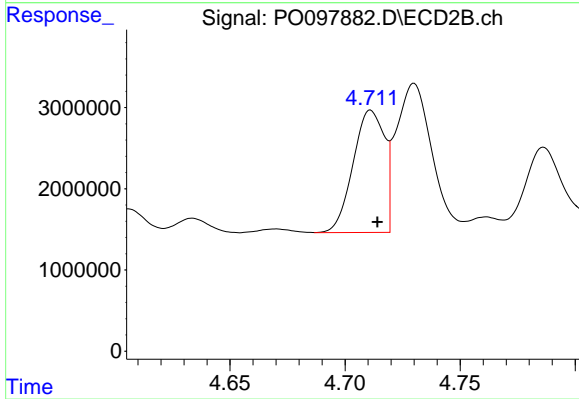
#15 AR-1232-5

R.T.: 5.163 min  
 Delta R.T.: -0.004 min  
 Response: 11954515  
 Conc: 986.07 ng/ml



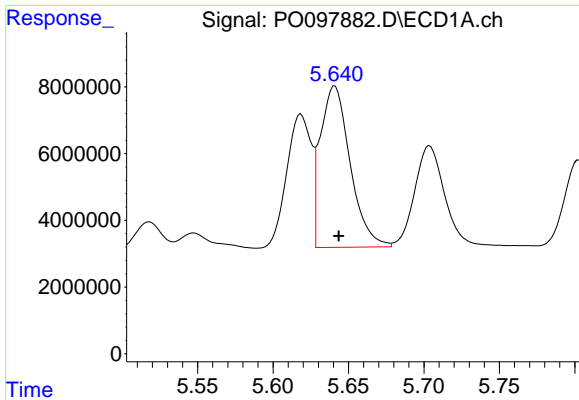
#16 AR-1242-1

R.T.: 5.618 min  
 Delta R.T.: -0.003 min  
 Response: 45142284  
 Conc: 484.66 ng/ml



#16 AR-1242-1

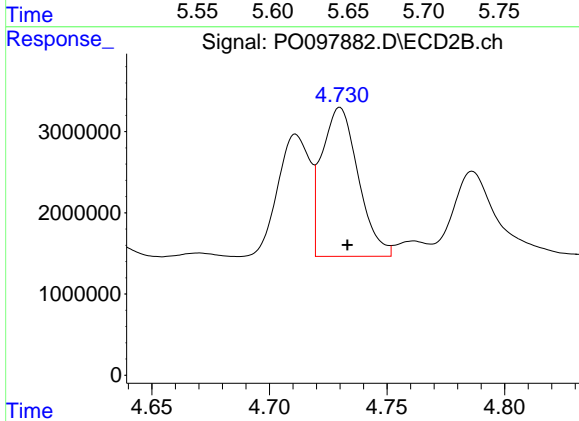
R.T.: 4.711 min  
 Delta R.T.: -0.003 min  
 Response: 14306861  
 Conc: 509.81 ng/ml



#17 AR-1242-2

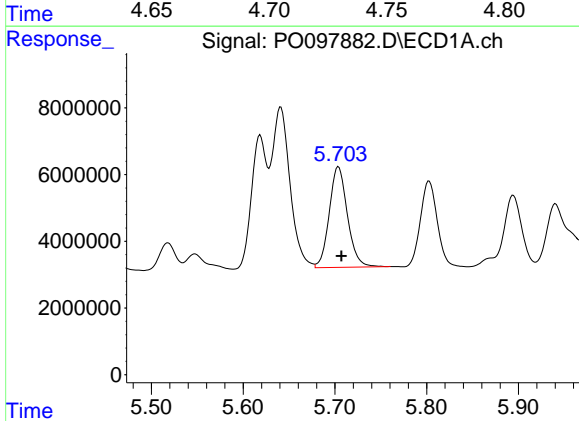
R.T.: 5.641 min  
Delta R.T.: -0.003 min  
Response: 66770520  
Conc: 475.92 ng/ml

Instrument :  
ECD\_O  
ClientSampleId :



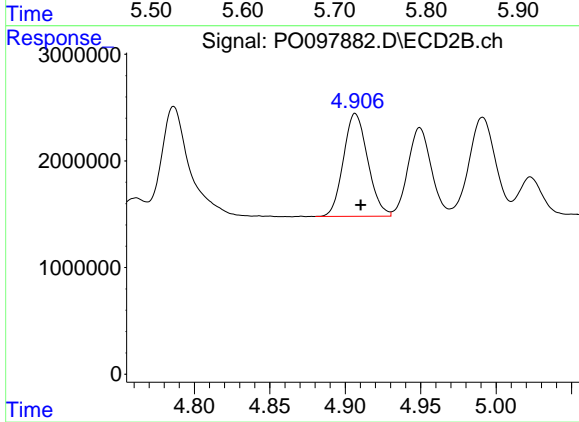
#17 AR-1242-2

R.T.: 4.730 min  
Delta R.T.: -0.003 min  
Response: 19792676  
Conc: 498.70 ng/ml



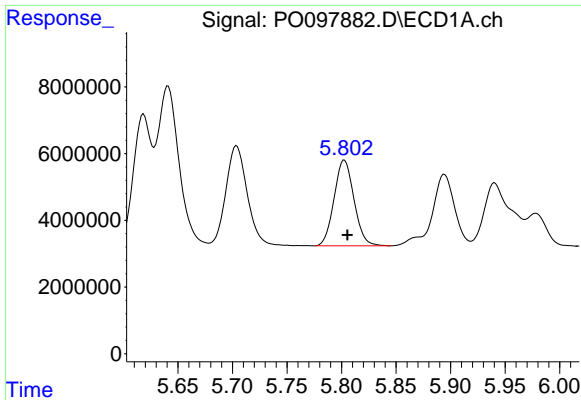
#18 AR-1242-3

R.T.: 5.704 min  
Delta R.T.: -0.003 min  
Response: 41576989  
Conc: 480.41 ng/ml



#18 AR-1242-3

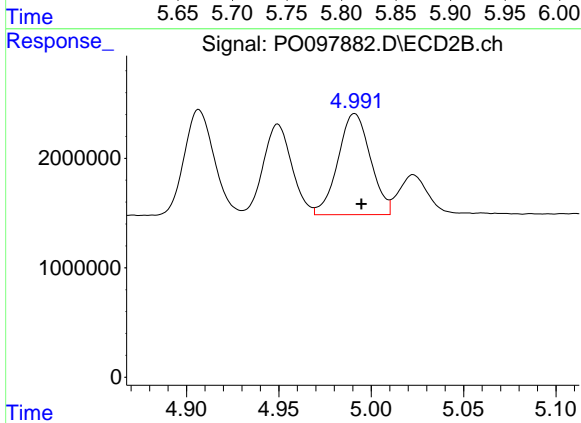
R.T.: 4.907 min  
Delta R.T.: -0.004 min  
Response: 10827124  
Conc: 512.36 ng/ml



#19 AR-1242-4

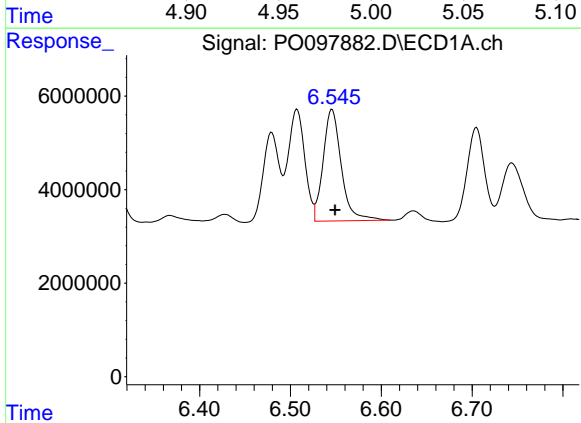
R.T.: 5.803 min  
 Delta R.T.: -0.003 min  
 Response: 32712790  
 Conc: 482.34 ng/ml

Instrument :  
 ECD\_O  
 ClientSampleId :



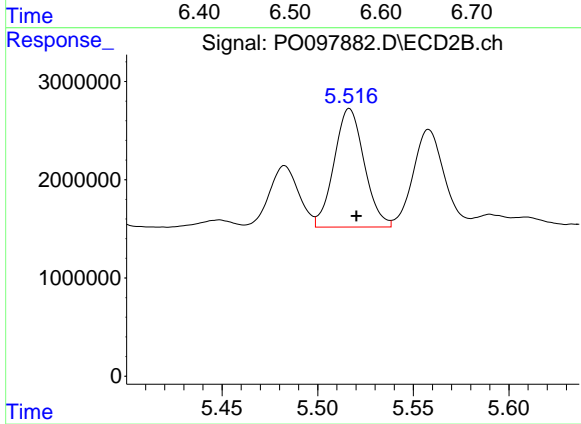
#19 AR-1242-4

R.T.: 4.991 min  
 Delta R.T.: -0.004 min  
 Response: 11323452  
 Conc: 494.07 ng/ml



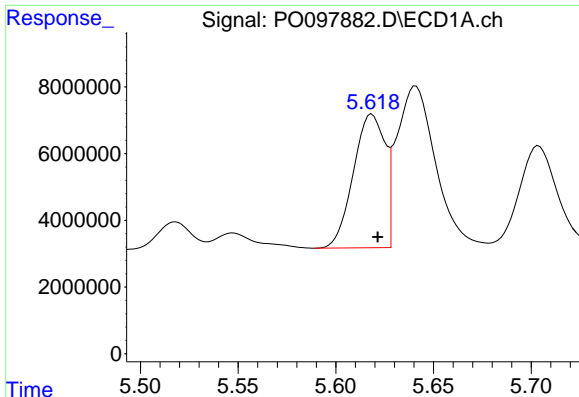
#20 AR-1242-5

R.T.: 6.546 min  
 Delta R.T.: -0.003 min  
 Response: 33230110  
 Conc: 472.24 ng/ml



#20 AR-1242-5

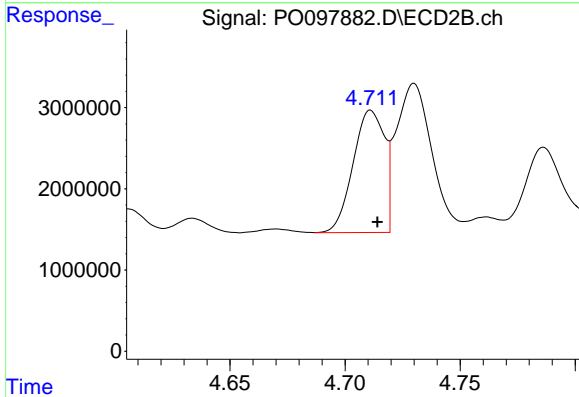
R.T.: 5.517 min  
 Delta R.T.: -0.004 min  
 Response: 13257866  
 Conc: 508.91 ng/ml



#21 AR-1248-1

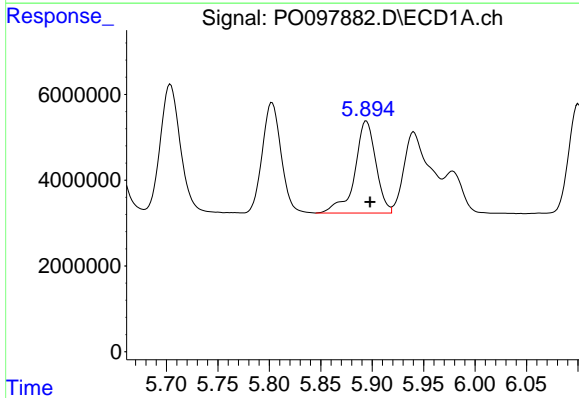
R.T.: 5.618 min  
 Delta R.T.: -0.003 min  
 Response: 45142284  
 Conc: 665.29 ng/ml

Instrument :  
 ECD\_O  
 ClientSampleId :



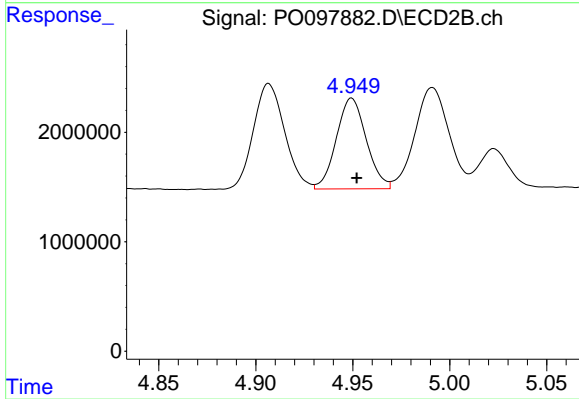
#21 AR-1248-1

R.T.: 4.711 min  
 Delta R.T.: -0.003 min  
 Response: 14306861  
 Conc: 696.45 ng/ml



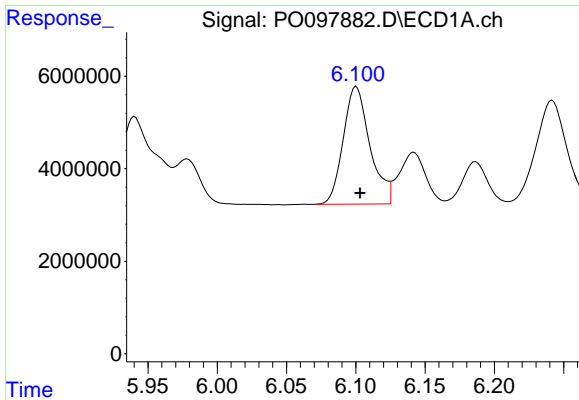
#22 AR-1248-2

R.T.: 5.894 min  
 Delta R.T.: -0.004 min  
 Response: 30658240  
 Conc: 283.50 ng/ml



#22 AR-1248-2

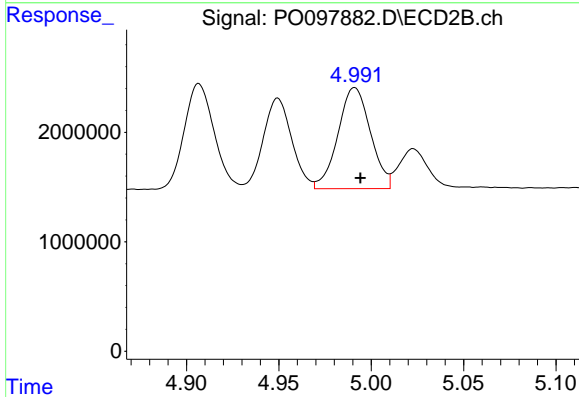
R.T.: 4.949 min  
 Delta R.T.: -0.003 min  
 Response: 8928566  
 Conc: 293.05 ng/ml



#23 AR-1248-3

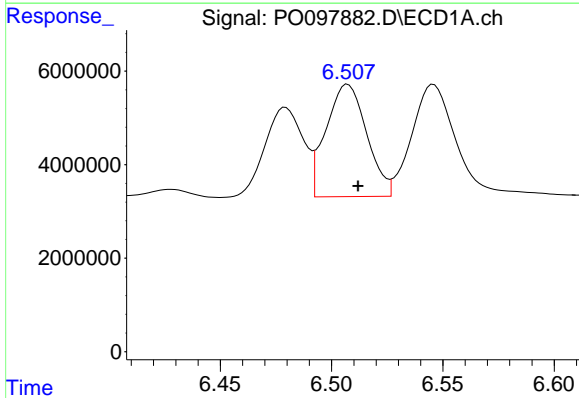
R.T.: 6.100 min  
 Delta R.T.: -0.003 min  
 Response: 34141030  
 Conc: 304.19 ng/ml

Instrument :  
 ECD\_O  
 ClientSampleId :



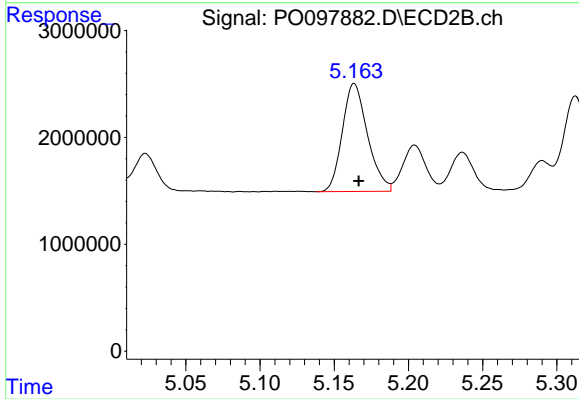
#23 AR-1248-3

R.T.: 4.991 min  
 Delta R.T.: -0.003 min  
 Response: 11323452  
 Conc: 355.56 ng/ml



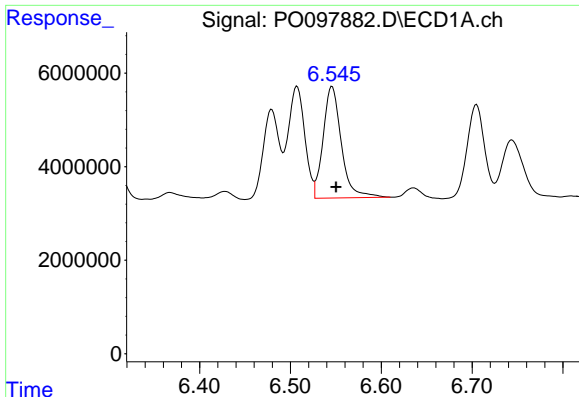
#24 AR-1248-4

R.T.: 6.507 min  
 Delta R.T.: -0.005 min  
 Response: 30563244  
 Conc: 295.64 ng/ml



#24 AR-1248-4

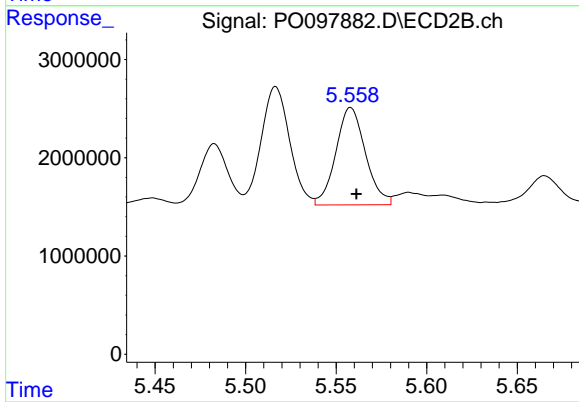
R.T.: 5.163 min  
 Delta R.T.: -0.003 min  
 Response: 11954515  
 Conc: 319.45 ng/ml



#25 AR-1248-5

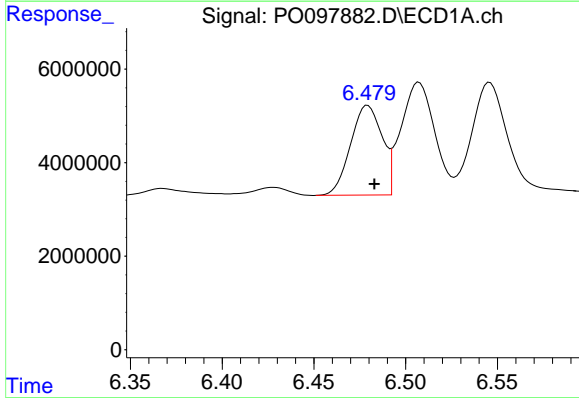
R.T.: 6.546 min  
 Delta R.T.: -0.004 min  
 Response: 33230110  
 Conc: 298.10 ng/ml

Instrument :  
 ECD\_O  
 ClientSampleId :



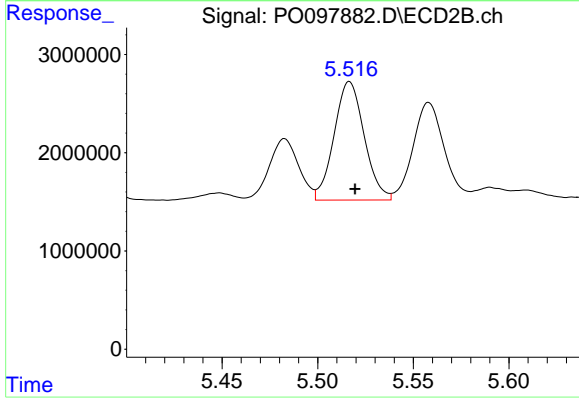
#25 AR-1248-5

R.T.: 5.558 min  
 Delta R.T.: -0.003 min  
 Response: 11278693  
 Conc: 338.47 ng/ml



#26 AR-1254-1

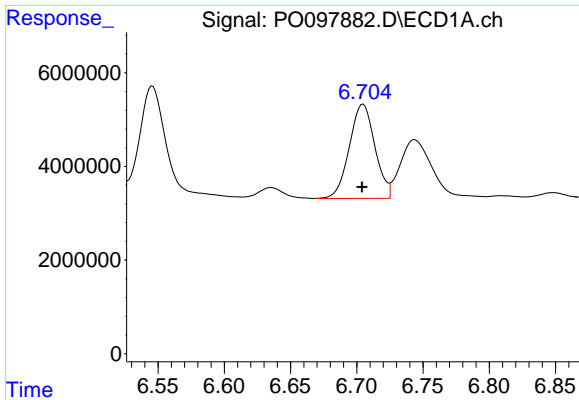
R.T.: 6.479 min  
 Delta R.T.: -0.004 min  
 Response: 22977269  
 Conc: 187.42 ng/ml



#26 AR-1254-1

R.T.: 5.517 min  
 Delta R.T.: -0.003 min  
 Response: 13257866  
 Conc: 243.88 ng/ml

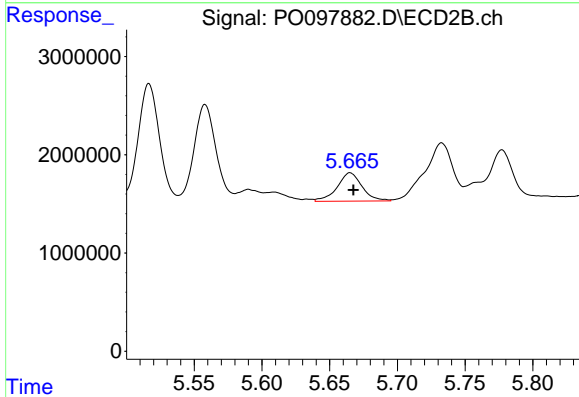




#27 AR-1254-2

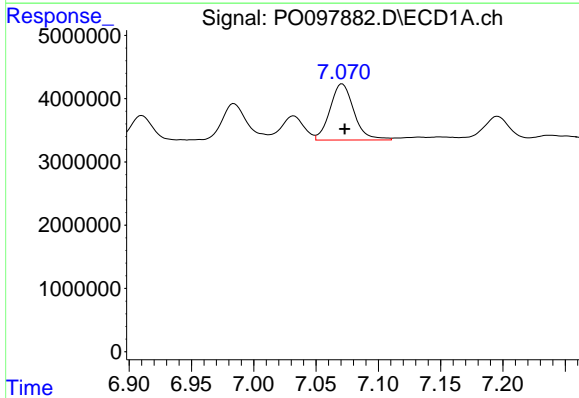
R.T.: 6.705 min  
 Delta R.T.: 0.000 min  
 Response: 26993984  
 Conc: 150.48 ng/ml

Instrument :  
 ECD\_O  
 ClientSampleId :



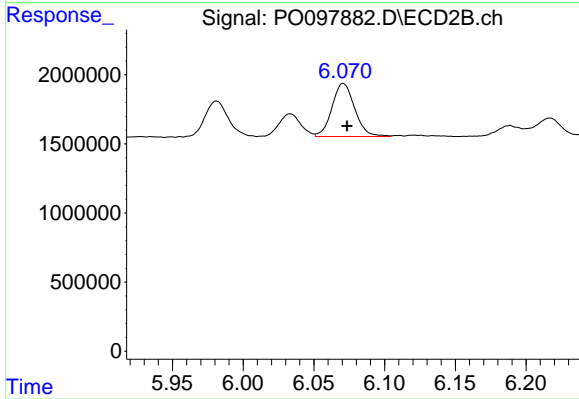
#27 AR-1254-2

R.T.: 5.665 min  
 Delta R.T.: -0.003 min  
 Response: 3696953  
 Conc: 76.77 ng/ml



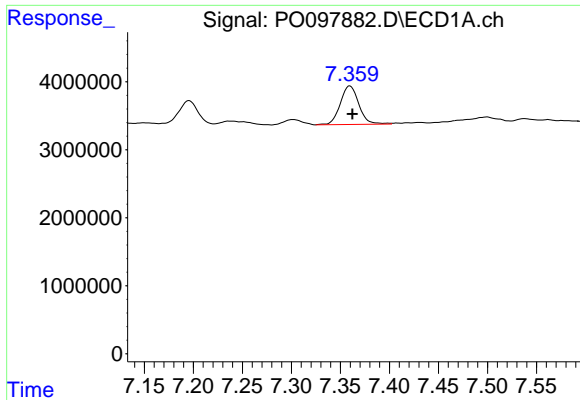
#28 AR-1254-3

R.T.: 7.071 min  
 Delta R.T.: -0.002 min  
 Response: 11888828  
 Conc: 67.14 ng/ml



#28 AR-1254-3

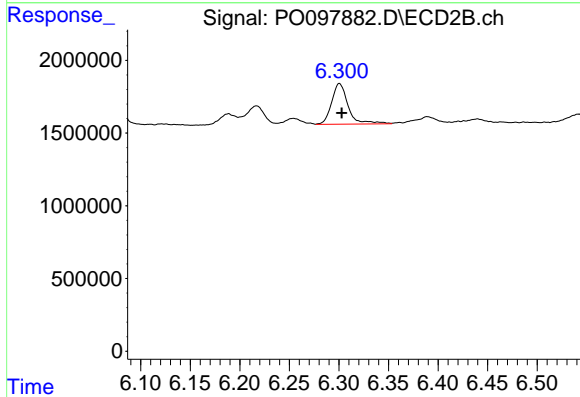
R.T.: 6.071 min  
 Delta R.T.: -0.003 min  
 Response: 4299423  
 Conc: 58.19 ng/ml



#29 AR-1254-4

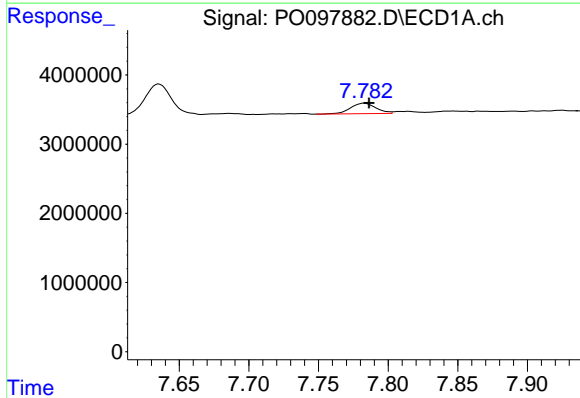
R.T.: 7.360 min  
 Delta R.T.: -0.003 min  
 Response: 7473909  
 Conc: 69.44 ng/ml

Instrument :  
 ECD\_O  
 ClientSampleId :



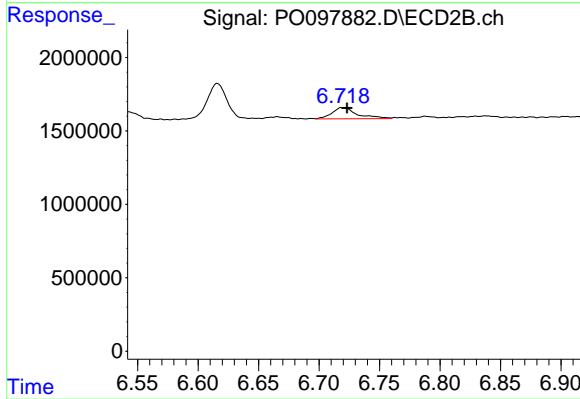
#29 AR-1254-4

R.T.: 6.301 min  
 Delta R.T.: -0.002 min  
 Response: 3238034  
 Conc: 81.70 ng/ml



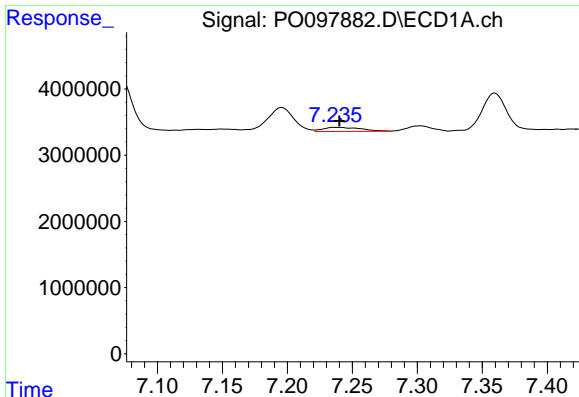
#30 AR-1254-5

R.T.: 7.783 min  
 Delta R.T.: -0.003 min  
 Response: 1932872  
 Conc: 16.08 ng/ml



#30 AR-1254-5

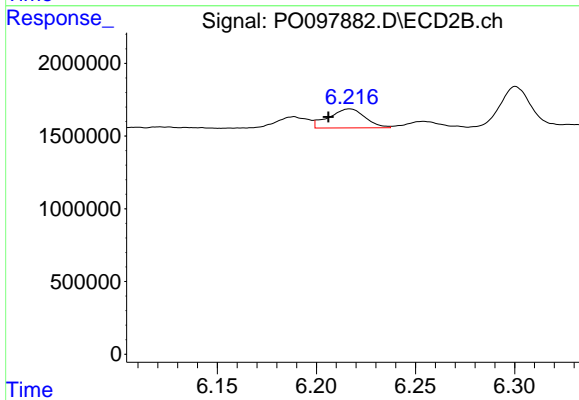
R.T.: 6.720 min  
 Delta R.T.: -0.004 min  
 Response: 1122708  
 Conc: 18.23 ng/ml



#31 AR-1260-1

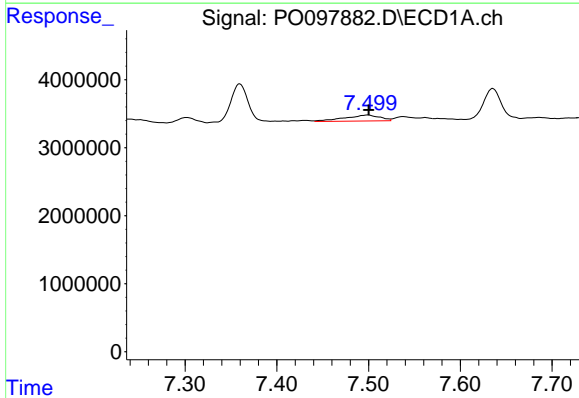
R.T.: 7.237 min  
 Delta R.T.: -0.003 min  
 Response: 1270757  
 Conc: 8.99 ng/ml

Instrument :  
 ECD\_O  
 ClientSampleId :



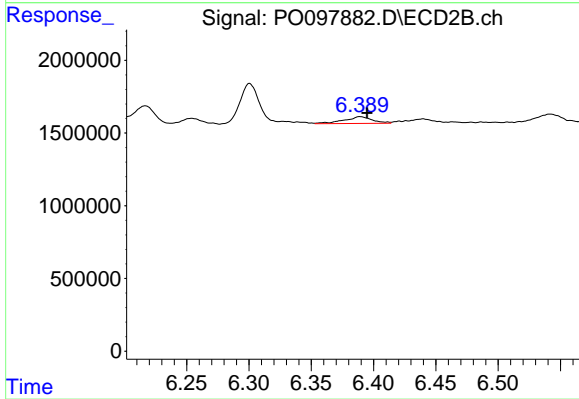
#31 AR-1260-1

R.T.: 6.217 min  
 Delta R.T.: 0.011 min  
 Response: 1659088  
 Conc: 31.18 ng/ml



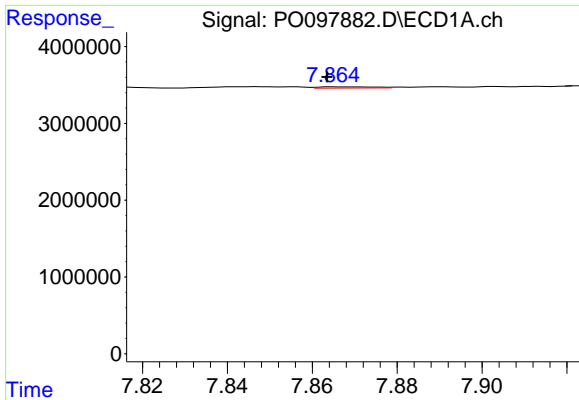
#32 AR-1260-2

R.T.: 7.500 min  
 Delta R.T.: 0.000 min  
 Response: 2333847  
 Conc: 15.44 ng/ml



#32 AR-1260-2

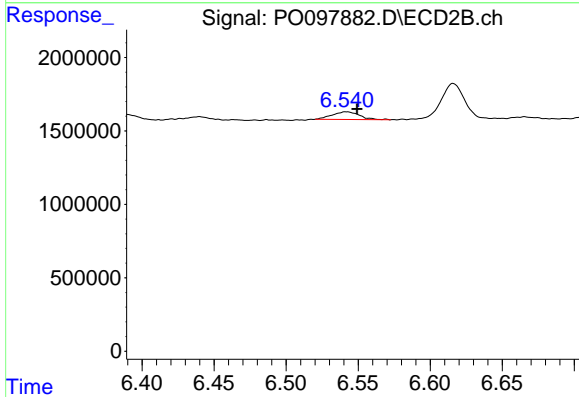
R.T.: 6.389 min  
 Delta R.T.: -0.006 min  
 Response: 740338  
 Conc: 11.82 ng/ml



#33 AR-1260-3

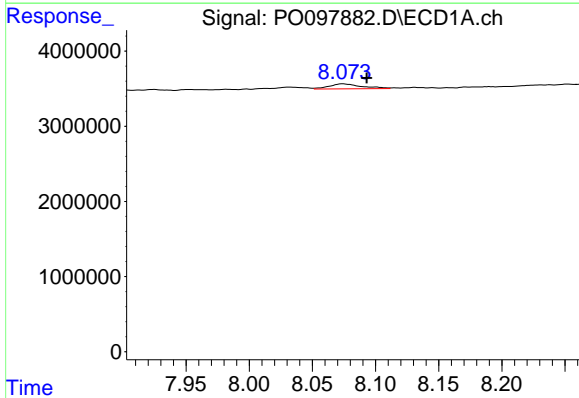
R.T.: 7.865 min  
 Delta R.T.: 0.002 min  
 Response: 149220  
 Conc: 1.32 ng/ml

Instrument :  
 ECD\_O  
 ClientSampleId :



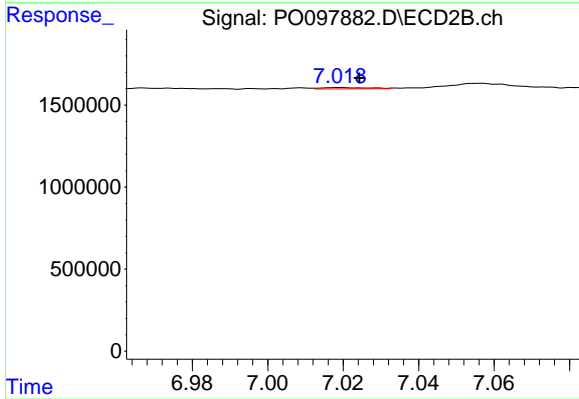
#33 AR-1260-3

R.T.: 6.542 min  
 Delta R.T.: -0.007 min  
 Response: 700824  
 Conc: 12.15 ng/ml



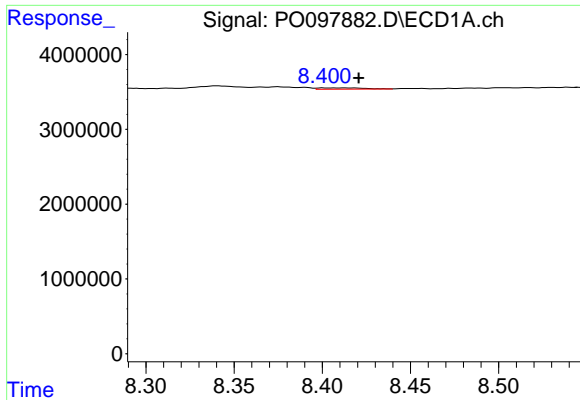
#34 AR-1260-4

R.T.: 8.074 min  
 Delta R.T.: -0.019 min  
 Response: 1169313  
 Conc: 9.84 ng/ml



#34 AR-1260-4

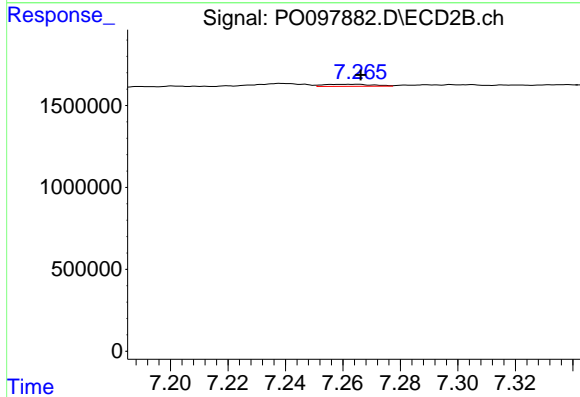
R.T.: 7.019 min  
 Delta R.T.: -0.005 min  
 Response: 68569  
 Conc: 1.46 ng/ml



#35 AR-1260-5

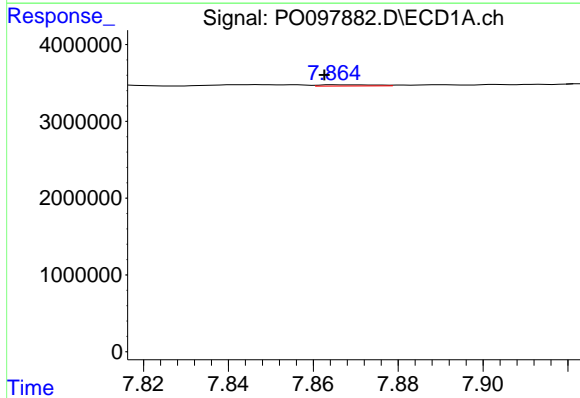
R.T.: 8.401 min  
 Delta R.T.: -0.020 min  
 Response: 305011  
 Conc: 1.49 ng/ml

Instrument :  
 ECD\_O  
 ClientSampleId :



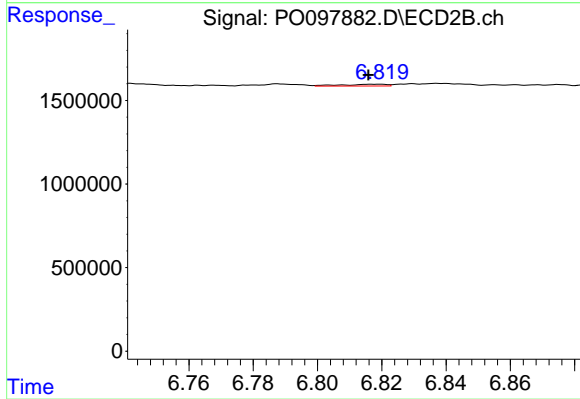
#35 AR-1260-5

R.T.: 7.265 min  
 Delta R.T.: -0.002 min  
 Response: 145529  
 Conc: 1.47 ng/ml



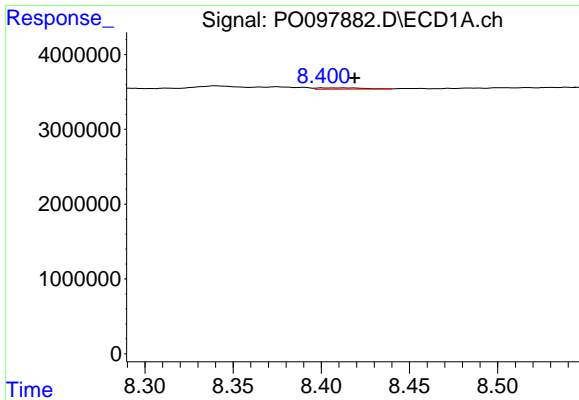
#36 AR-1262-1

R.T.: 7.865 min  
 Delta R.T.: 0.003 min  
 Response: 149220  
 Conc: 0.98 ng/ml



#36 AR-1262-1

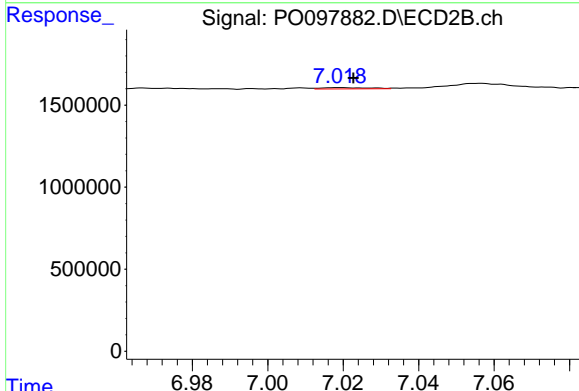
R.T.: 6.819 min  
 Delta R.T.: 0.003 min  
 Response: 110580  
 Conc: 4.08 ng/ml



#37 AR-1262-2

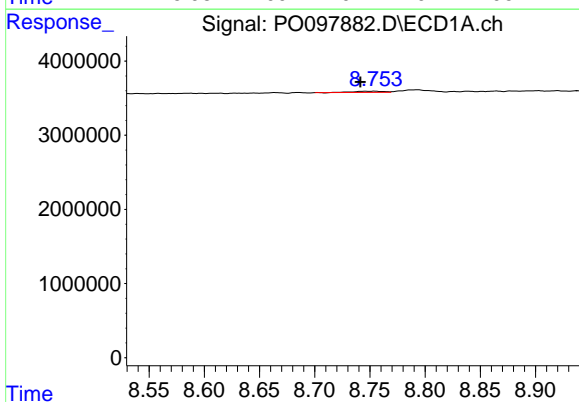
R.T.: 8.401 min  
 Delta R.T.: -0.018 min  
 Response: 305011  
 Conc: 1.40 ng/ml

Instrument :  
 ECD\_O  
 ClientSampleId :



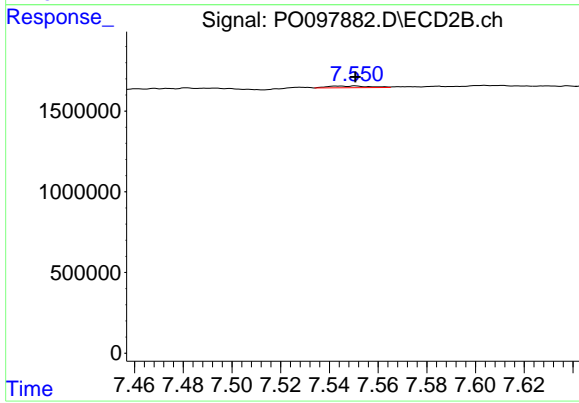
#37 AR-1262-2

R.T.: 7.019 min  
 Delta R.T.: -0.004 min  
 Response: 68569  
 Conc: 1.18 ng/ml



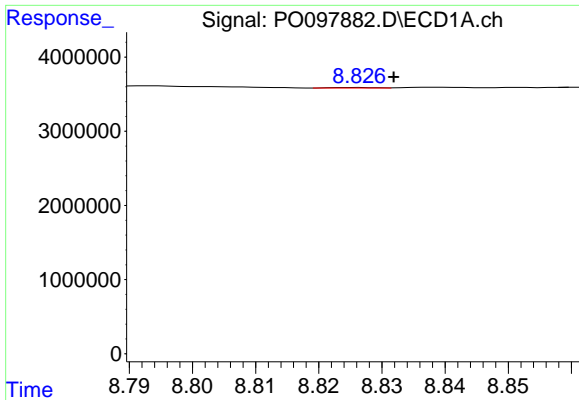
#38 AR-1262-3

R.T.: 8.754 min  
 Delta R.T.: 0.013 min  
 Response: 276676  
 Conc: 1.79 ng/ml



#38 AR-1262-3

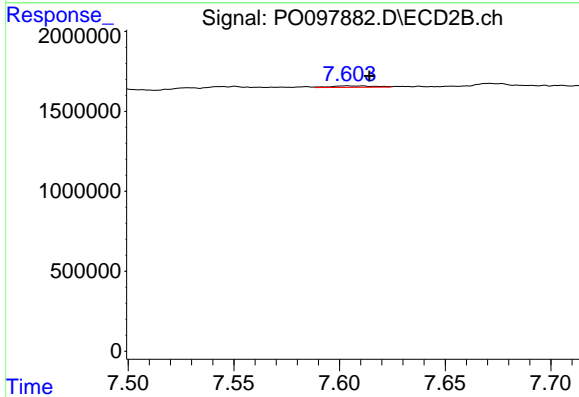
R.T.: 7.551 min  
 Delta R.T.: 0.000 min  
 Response: 135506  
 Conc: 3.11 ng/ml



#39 AR-1262-4

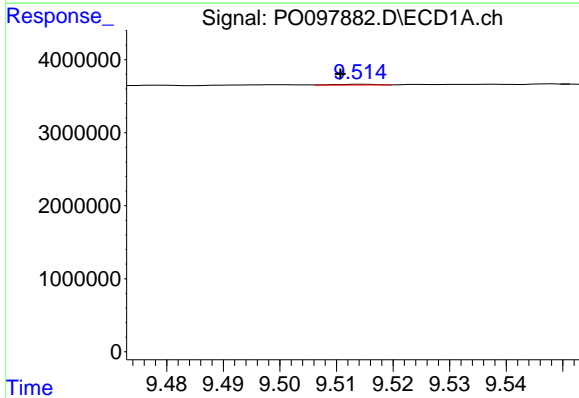
R.T.: 8.826 min  
 Delta R.T.: -0.006 min  
 Response: 31007  
 Conc: 0.37 ng/ml

Instrument :  
 ECD\_O  
 ClientSampleId :



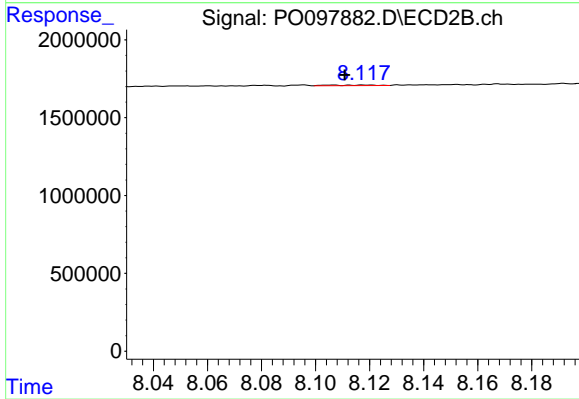
#39 AR-1262-4

R.T.: 7.604 min  
 Delta R.T.: -0.010 min  
 Response: 129310  
 Conc: 1.70 ng/ml



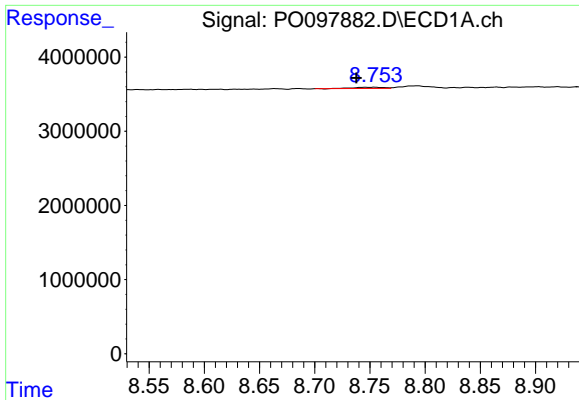
#40 AR-1262-5

R.T.: 9.515 min  
 Delta R.T.: 0.004 min  
 Response: 50378  
 Conc: 0.70 ng/ml



#40 AR-1262-5

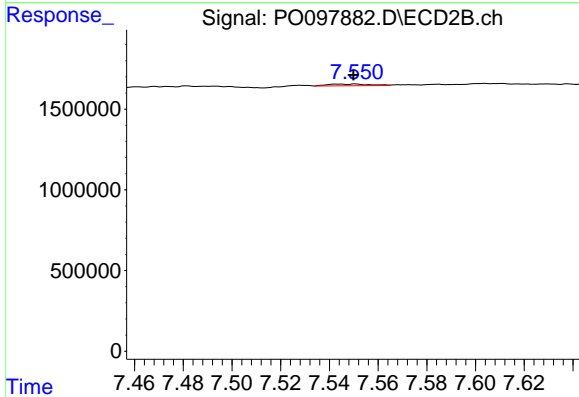
R.T.: 8.106 min  
 Delta R.T.: -0.005 min  
 Response: 40419  
 Conc: 1.29 ng/ml



#41 AR-1268-1

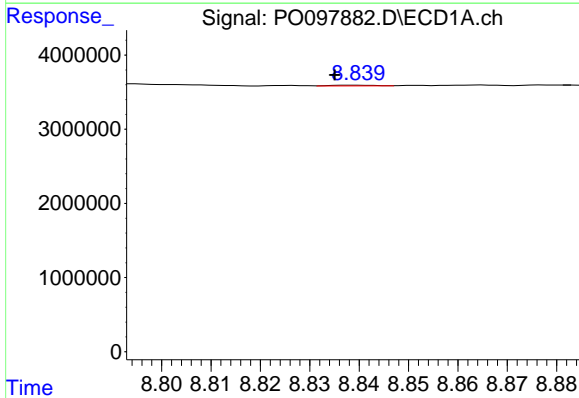
R.T.: 8.754 min  
 Delta R.T.: 0.017 min  
 Response: 276676  
 Conc: 0.97 ng/ml

Instrument :  
 ECD\_O  
 ClientSampleId :



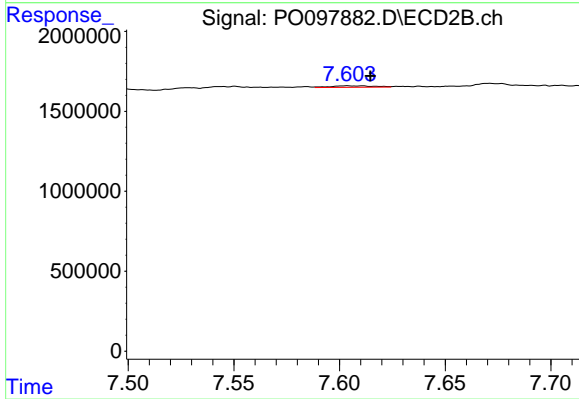
#41 AR-1268-1

R.T.: 7.551 min  
 Delta R.T.: 0.000 min  
 Response: 135506  
 Conc: 1.03 ng/ml



#42 AR-1268-2

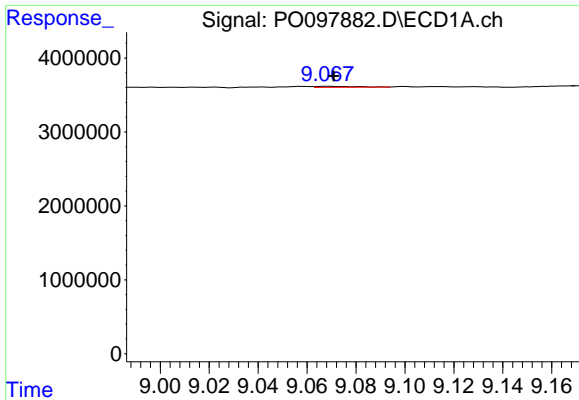
R.T.: 8.840 min  
 Delta R.T.: 0.005 min  
 Response: 54530  
 Conc: 0.21 ng/ml



#42 AR-1268-2

R.T.: 7.604 min  
 Delta R.T.: -0.011 min  
 Response: 129310  
 Conc: 1.12 ng/ml

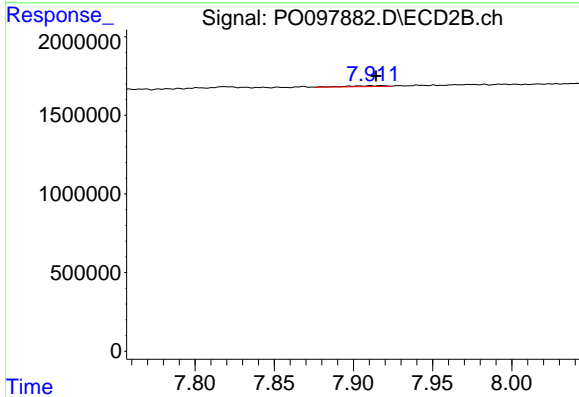




#43 AR-1268-3

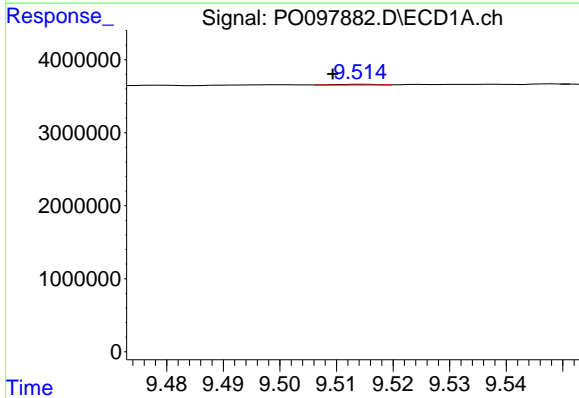
R.T.: 9.068 min  
 Delta R.T.: -0.003 min  
 Response: 150570  
 Conc: 0.67 ng/ml

Instrument :  
 ECD\_O  
 ClientSampleId :



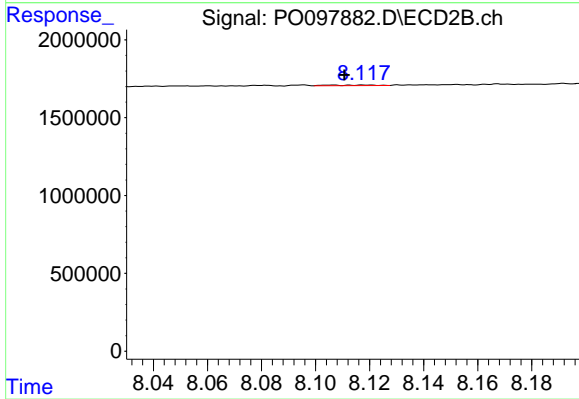
#43 AR-1268-3

R.T.: 7.911 min  
 Delta R.T.: -0.003 min  
 Response: 106111  
 Conc: 3.84 ng/ml



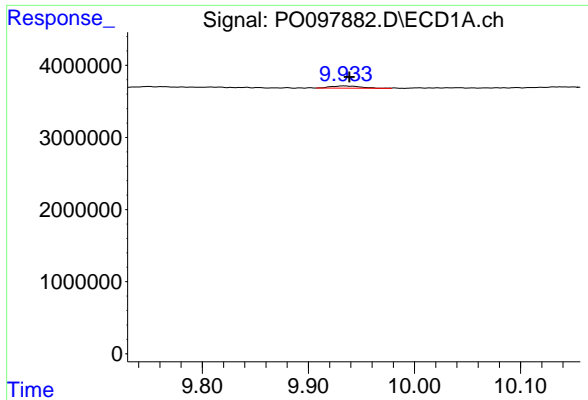
#44 AR-1268-4

R.T.: 9.515 min  
 Delta R.T.: 0.005 min  
 Response: 50378  
 Conc: 0.62 ng/ml



#44 AR-1268-4

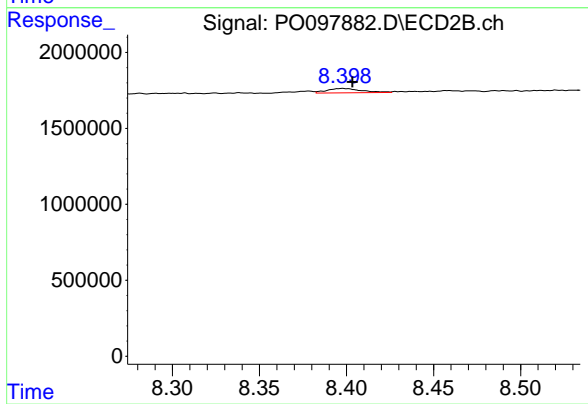
R.T.: 8.106 min  
 Delta R.T.: -0.004 min  
 Response: 40419  
 Conc: 1.15 ng/ml



#45 AR-1268-5

R.T.: 9.933 min  
Delta R.T.: -0.006 min  
Response: 612094  
Conc: 0.92 ng/ml

Instrument :  
ECD\_O  
ClientSampleId :



#45 AR-1268-5

R.T.: 8.398 min  
Delta R.T.: -0.006 min  
Response: 395858  
Conc: 1.26 ng/ml