

Data Path : Z:\pestpcbsrv\HPCHEM1\ECD\_0\Data\P0091123\  
 Data File : P0097868.D  
 Signal(s) : Signal #1: ECD1A.ch Signal #2: ECD2B.ch  
 Acq On : 11 Sep 2023 10:01  
 Operator : YP/AJ  
 Sample : AR1248CCC500  
 Misc :  
 ALS Vial : 5 Sample Multiplier: 1

Instrument :  
 ECD\_0  
 ClientSampleId :  
 AR1248CCC500

Integration File signal 1: autoint1.e  
 Integration File signal 2: autoint2.e  
 Quant Time: Sep 11 15:46:21 2023  
 Quant Method : Z:\pestpcbsrv\HPCHEM1\ECD\_0\methods\P0090623.M  
 Quant Title : GC EXTRACTABLES  
 QLast Update : Thu Sep 07 02:56:18 2023  
 Response via : Initial Calibration  
 Integrator: ChemStation

Volume Inj. : 2 µl  
 Signal #1 Phase : ZB-MR1 Signal #2 Phase: ZB-MR2  
 Signal #1 Info : 30Mx0.32mmx 0.50µ Signal #2 Info : 30M x 0.32mm x 0.25µm

Compound	RT#1	RT#2	Resp#1	Resp#2	ng/ml	ng/ml
-----						
System Monitoring Compounds						
1) SA Tetrachlo...	4.441	3.621	193.7E6	45014257	48.624	47.003
2) SA Decachlor...	10.287	8.655	97652419	42007179	52.264	49.167
Target Compounds						
21) L5 AR-1248-1	5.618	4.710	34937285	9869959	514.892	480.465
22) L5 AR-1248-2	5.894	4.948	52728886	14300598	487.584	469.370
23) L5 AR-1248-3	6.100	4.990	55387323	15016400	493.485	471.516
24) L5 AR-1248-4	6.507	5.162	55325604	17491985	535.172	467.419
25) L5 AR-1248-5	6.546	5.557	55452136	16365923	497.450	491.141
-----						

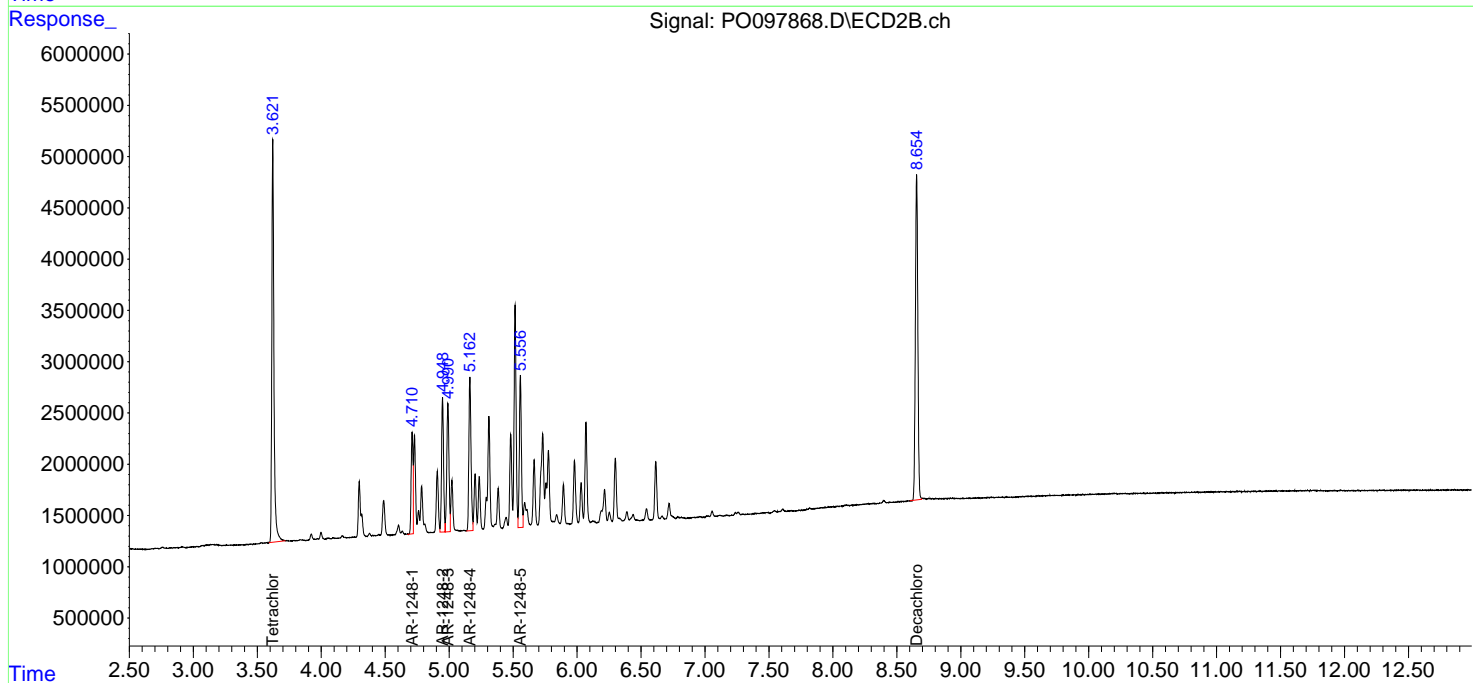
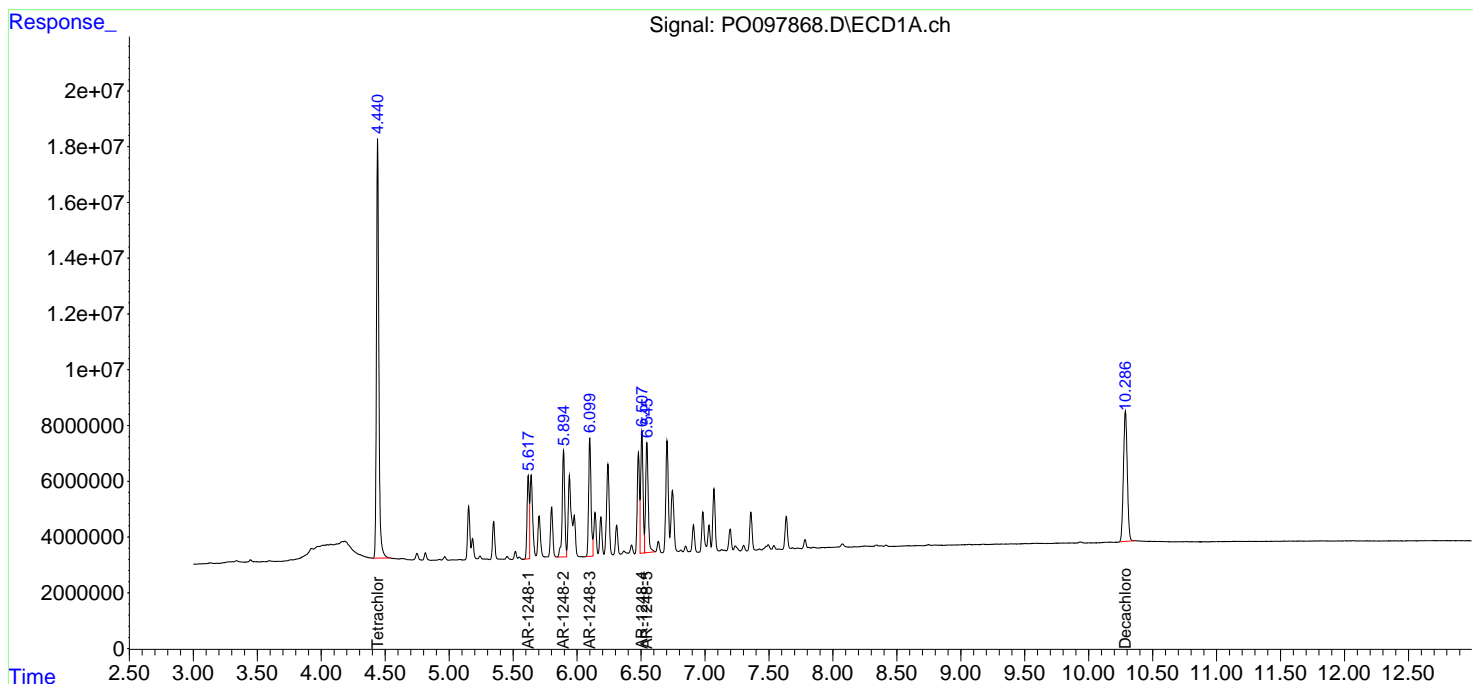
(f)=RT Delta > 1/2 Window (#)=Amounts differ by > 25% (m)=manual int.

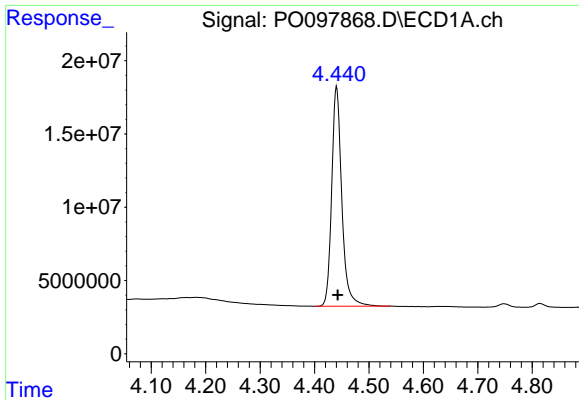
Data Path : Z:\pestpcbsrv\HPCHEM1\ECD\_O\Data\PO091123\  
 Data File : PO097868.D  
 Signal(s) : Signal #1: ECD1A.ch Signal #2: ECD2B.ch  
 Acq On : 11 Sep 2023 10:01  
 Operator : YP/AJ  
 Sample : AR1248CCC500  
 Misc :  
 ALS Vial : 5 Sample Multiplier: 1

Instrument :  
 ECD\_O  
 ClientSampleId :  
 AR1248CCC500

Integration File signal 1: autoint1.e  
 Integration File signal 2: autoint2.e  
 Quant Time: Sep 11 15:46:21 2023  
 Quant Method : Z:\pestpcbsrv\HPCHEM1\ECD\_O\methods\PO090623.M  
 Quant Title : GC EXTRACTABLES  
 QLast Update : Thu Sep 07 02:56:18 2023  
 Response via : Initial Calibration  
 Integrator: ChemStation

Volume Inj. : 2 µl  
 Signal #1 Phase : ZB-MR1 Signal #2 Phase: ZB-MR2  
 Signal #1 Info : 30Mx0.32mmx 0.50µ Signal #2 Info : 30M x 0.32mm x 0.25µm

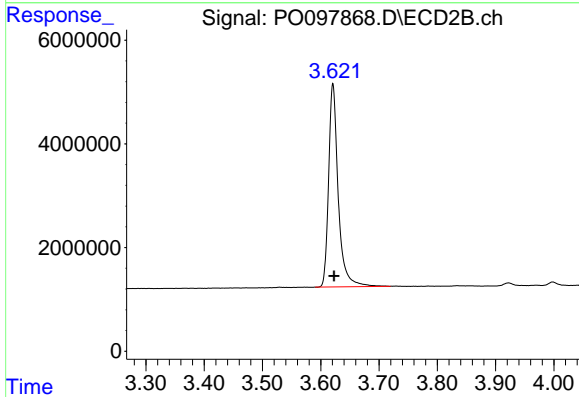




#1 Tetrachloro-m-xylene

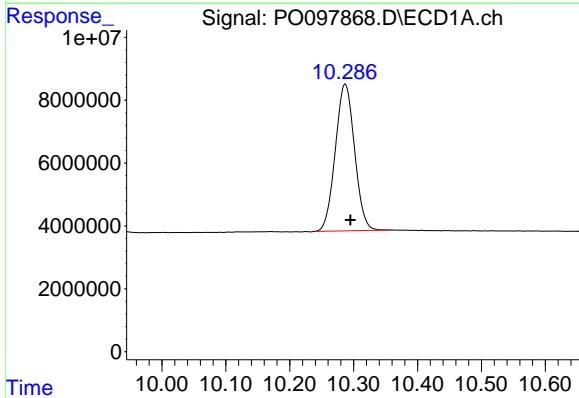
R.T.: 4.441 min  
 Delta R.T.: -0.002 min  
 Response: 193721809  
 Conc: 48.62 ng/ml

Instrument :  
 ECD\_O  
 ClientSampleId :  
 AR1248CCC500



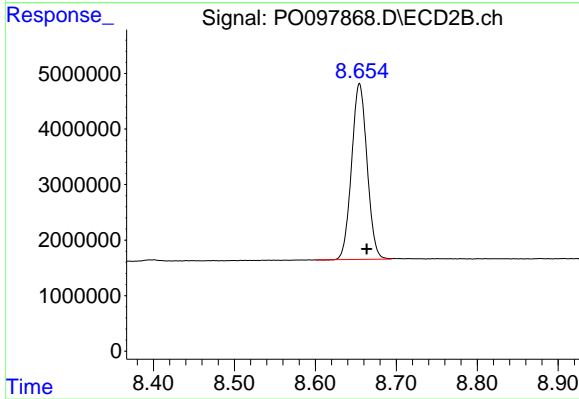
#1 Tetrachloro-m-xylene

R.T.: 3.621 min  
 Delta R.T.: -0.002 min  
 Response: 45014257  
 Conc: 47.00 ng/ml



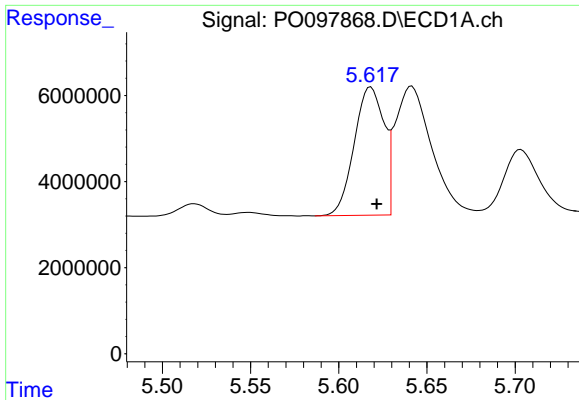
#2 Decachlorobiphenyl

R.T.: 10.287 min  
 Delta R.T.: -0.008 min  
 Response: 97652419  
 Conc: 52.26 ng/ml



#2 Decachlorobiphenyl

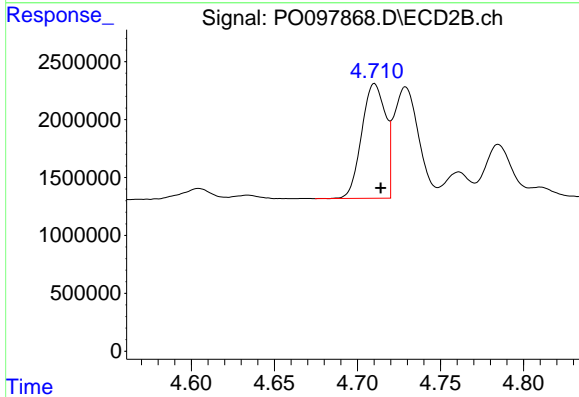
R.T.: 8.655 min  
 Delta R.T.: -0.009 min  
 Response: 42007179  
 Conc: 49.17 ng/ml



#21 AR-1248-1

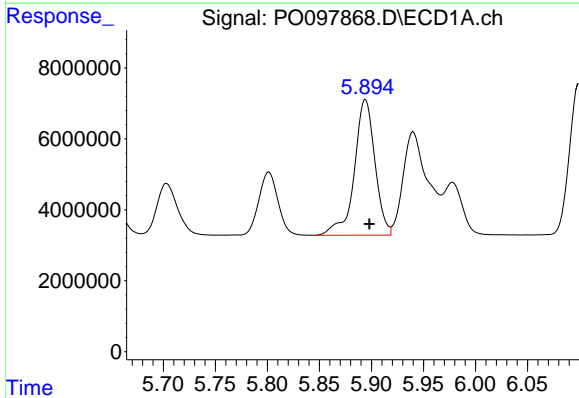
R.T.: 5.618 min  
 Delta R.T.: -0.003 min  
 Response: 34937285  
 Conc: 514.89 ng/ml

Instrument :  
 ECD\_O  
 ClientSampleId :  
 AR1248CCC500



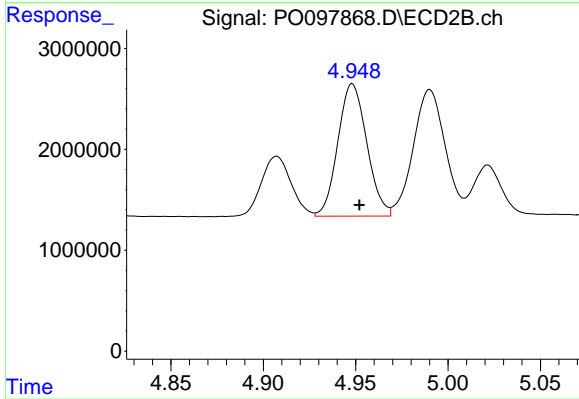
#21 AR-1248-1

R.T.: 4.710 min  
 Delta R.T.: -0.004 min  
 Response: 9869959  
 Conc: 480.46 ng/ml



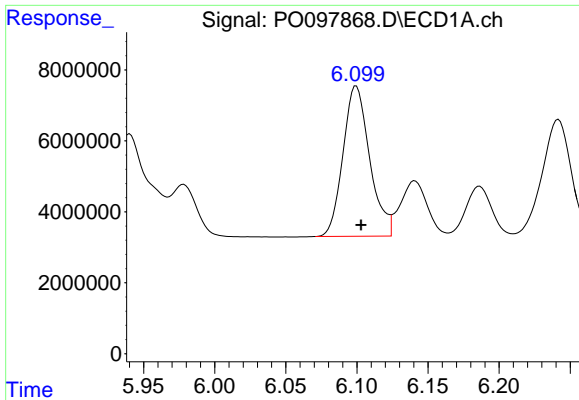
#22 AR-1248-2

R.T.: 5.894 min  
 Delta R.T.: -0.004 min  
 Response: 52728886  
 Conc: 487.58 ng/ml



#22 AR-1248-2

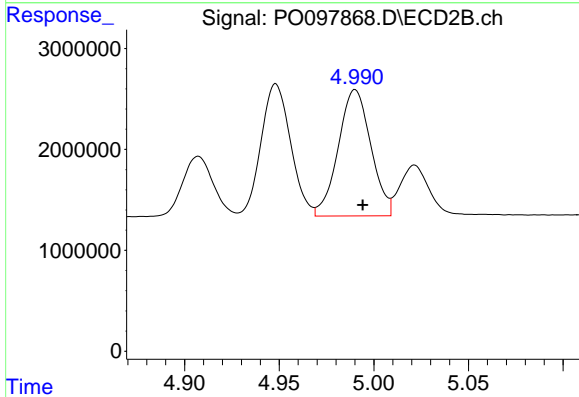
R.T.: 4.948 min  
 Delta R.T.: -0.004 min  
 Response: 14300598  
 Conc: 469.37 ng/ml



#23 AR-1248-3

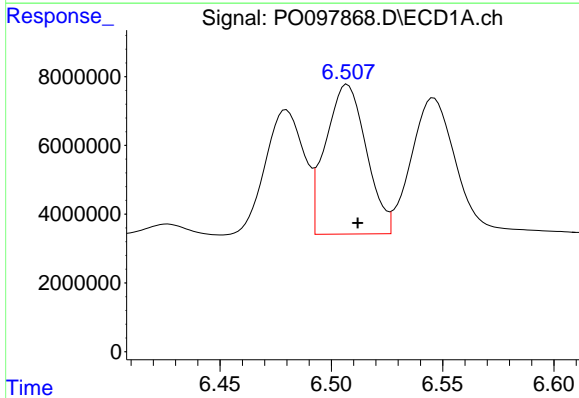
R.T.: 6.100 min  
 Delta R.T.: -0.004 min  
 Response: 55387323  
 Conc: 493.49 ng/ml

Instrument :  
 ECD\_O  
 ClientSampleId :  
 AR1248CCC500



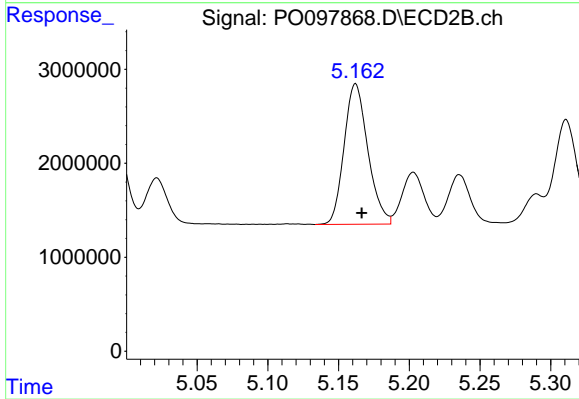
#23 AR-1248-3

R.T.: 4.990 min  
 Delta R.T.: -0.004 min  
 Response: 15016400  
 Conc: 471.52 ng/ml



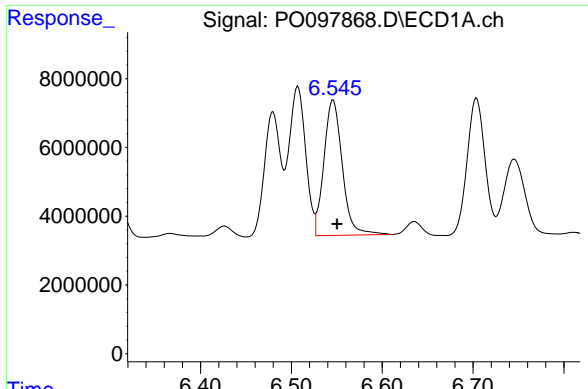
#24 AR-1248-4

R.T.: 6.507 min  
 Delta R.T.: -0.005 min  
 Response: 55325604  
 Conc: 535.17 ng/ml



#24 AR-1248-4

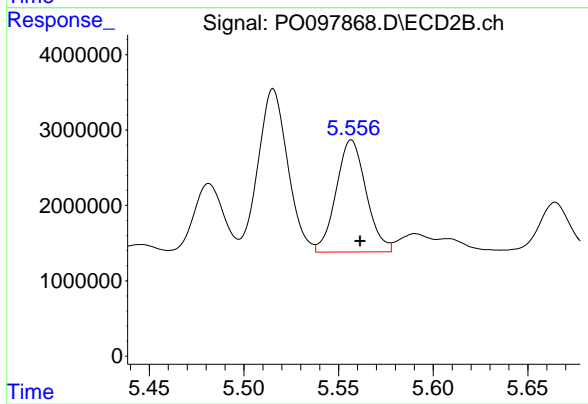
R.T.: 5.162 min  
 Delta R.T.: -0.004 min  
 Response: 17491985  
 Conc: 467.42 ng/ml



#25 AR-1248-5

R.T.: 6.546 min  
Delta R.T.: -0.004 min  
Response: 55452136  
Conc: 497.45 ng/ml

Instrument :  
ECD\_O  
ClientSampleId :  
AR1248CCC500



#25 AR-1248-5

R.T.: 5.557 min  
Delta R.T.: -0.004 min  
Response: 16365923  
Conc: 491.14 ng/ml