

Data Path : Z:\pestpcbsrv\HPCHEM1\ECD_0\Data\P0091219\
 Data File : P0060690.D
 Signal(s) : Signal #1: ECD1A.CH Signal #2: ECD2B.CH
 Acq On : 12 Sep 2019 13:08
 Operator : SM/AJ
 Sample : K4857-04
 Misc :
 ALS Vial : 9 Sample Multiplier: 1

Instrument :
 ECD_0
 ClientSampleId :
 SLUDGE-COMP

Integration File signal 1: autoint1.e
 Integration File signal 2: autoint2.e
 Quant Time: Sep 13 04:21:01 2019
 Quant Method : Z:\pestpcbsrv\HPCHEM1\ECD_0\methods\P0090719.M
 Quant Title : GC EXTRACTABLES
 QLast Update : Sun Sep 08 02:12:04 2019
 Response via : Initial Calibration
 Integrator: ChemStation 6890 Scale Mode: Small noise peaks clipped

Volume Inj. : 2 µl
 Signal #1 Phase : ZB-MR1 Signal #2 Phase: ZB-MR2
 Signal #1 Info : 30Mx0.32mmx 0.50µ Signal #2 Info : 30M x 0.32mm x 0.25µm

Compound	RT#1	RT#2	Resp#1	Resp#2	ng/ml	ng/ml
----------	------	------	--------	--------	-------	-------

 System Monitoring Compounds

1) SA Tetrachlo...	4.368	3.531	808228	639461	19.479	20.819
2) SA Decachlor...	10.029	8.416	639372	456737	12.121	12.338

Target Compounds

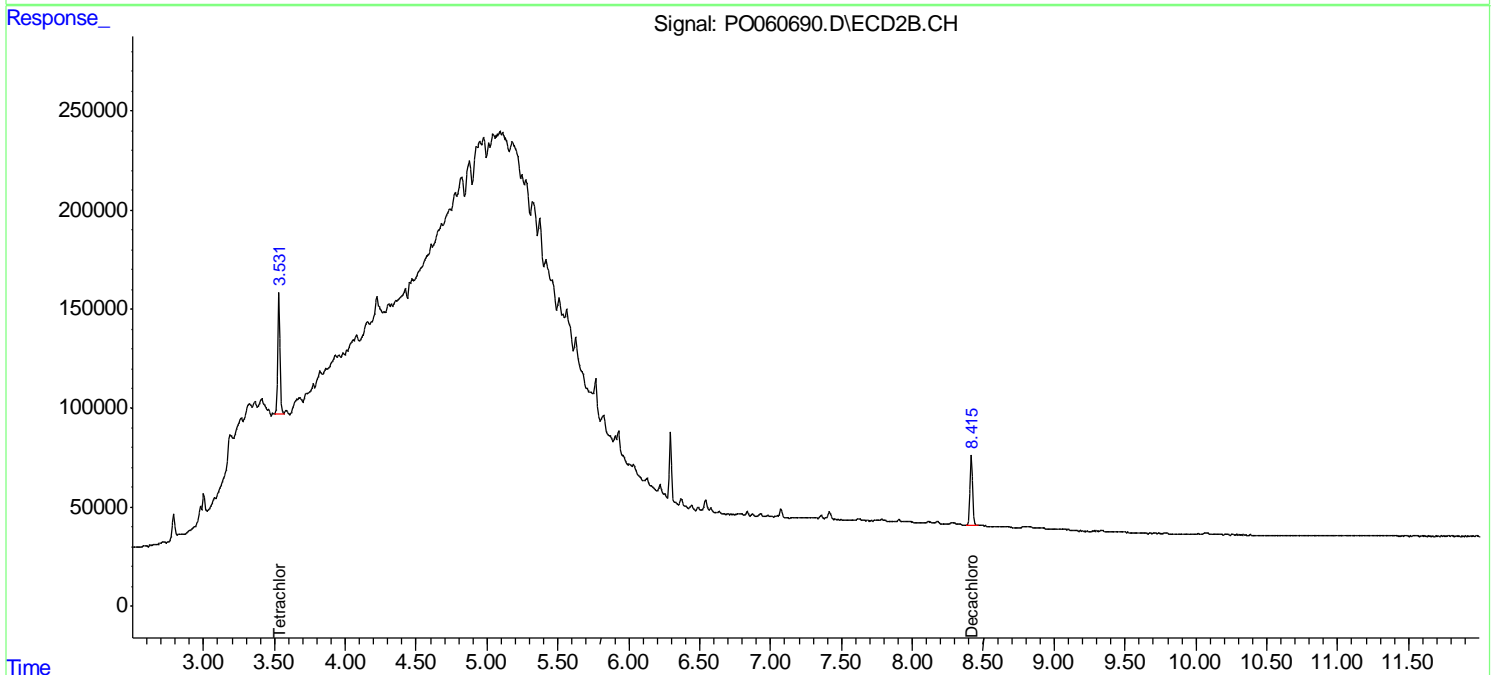
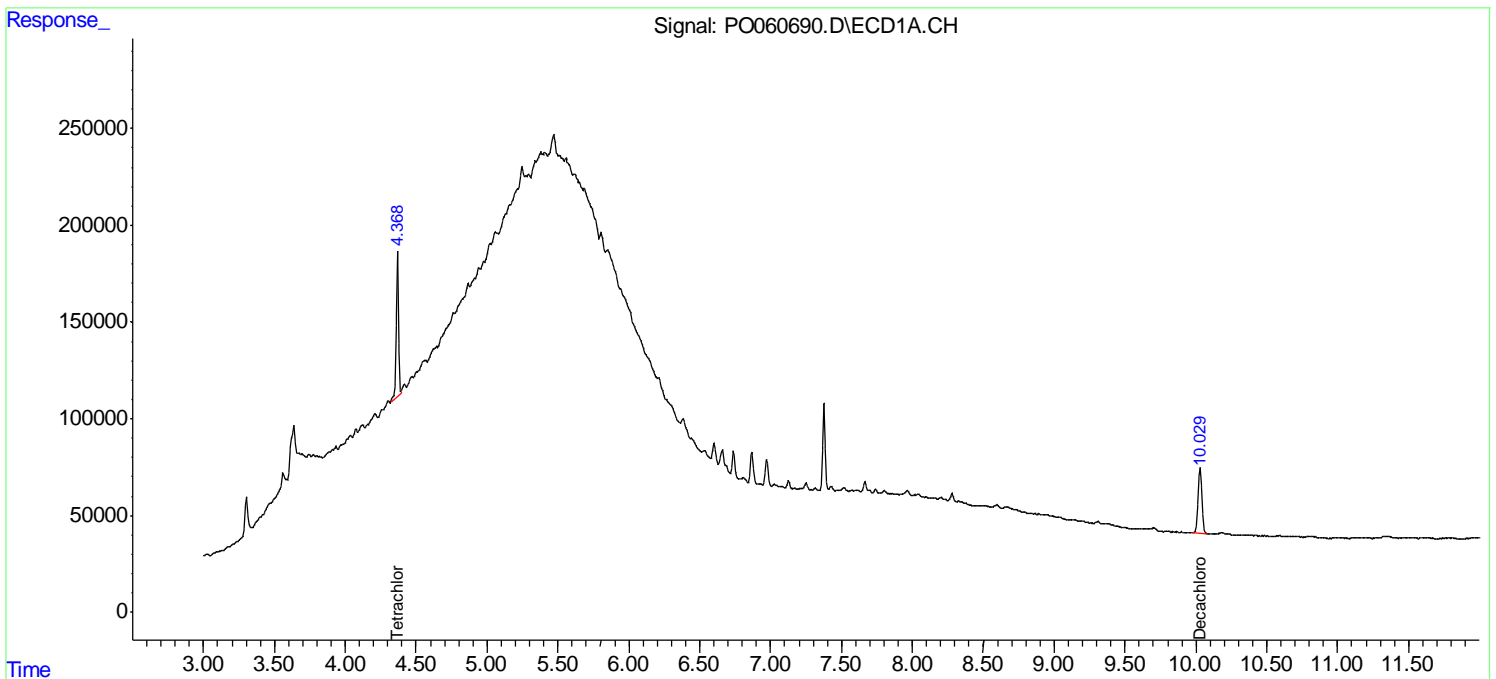
(f)=RT Delta > 1/2 Window (#)=Amounts differ by > 25% (m)=manual int.

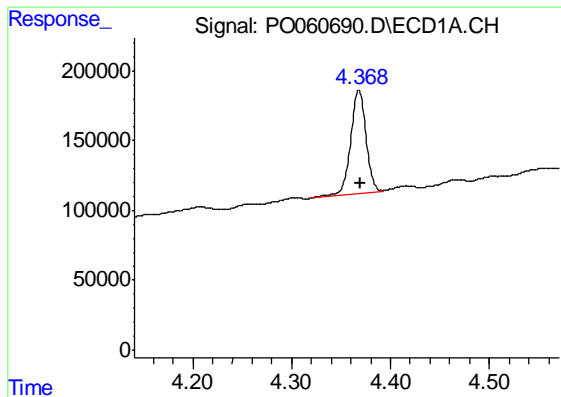
Data Path : Z:\pestpcbsrv\HPCHEM1\ECD_O\Data\P0091219\
 Data File : P0060690.D
 Signal(s) : Signal #1: ECD1A.CH Signal #2: ECD2B.CH
 Acq On : 12 Sep 2019 13:08
 Operator : SM/AJ
 Sample : K4857-04
 Misc :
 ALS Vial : 9 Sample Multiplier: 1

Instrument :
 ECD_O
 ClientSampleId :
 SLUDGE-COMP

Integration File signal 1: autoint1.e
 Integration File signal 2: autoint2.e
 Quant Time: Sep 13 04:21:01 2019
 Quant Method : Z:\pestpcbsrv\HPCHEM1\ECD_O\methods\P0090719.M
 Quant Title : GC EXTRACTABLES
 QLast Update : Sun Sep 08 02:12:04 2019
 Response via : Initial Calibration
 Integrator: ChemStation 6890 Scale Mode: Small noise peaks clipped

Volume Inj. : 2 µl
 Signal #1 Phase : ZB-MR1 Signal #2 Phase: ZB-MR2
 Signal #1 Info : 30Mx0.32mmx 0.50µ Signal #2 Info : 30M x 0.32mm x 0.25µm

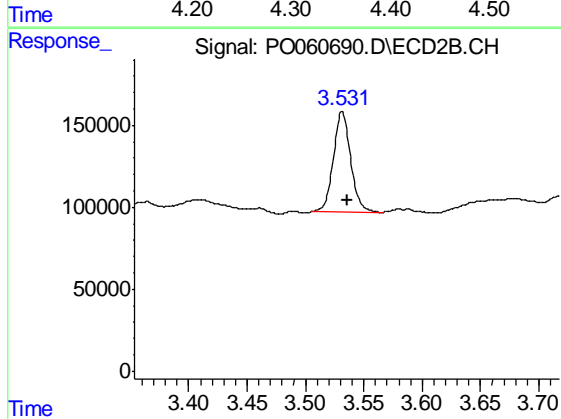




#1 Tetrachloro-m-xylene

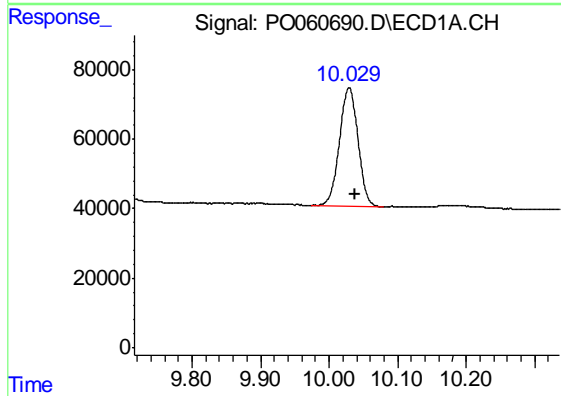
R.T.: 4.368 min
Delta R.T.: 0.000 min
Response: 808228
Conc: 19.48 ng/ml

Instrument :
ECD_O
ClientSampleId :
SLUDGE-COMP



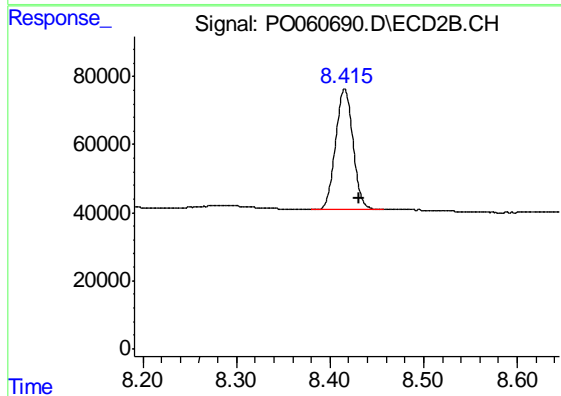
#1 Tetrachloro-m-xylene

R.T.: 3.531 min
Delta R.T.: -0.005 min
Response: 639461
Conc: 20.82 ng/ml



#2 Decachlorobiphenyl

R.T.: 10.029 min
Delta R.T.: -0.008 min
Response: 639372
Conc: 12.12 ng/ml



#2 Decachlorobiphenyl

R.T.: 8.416 min
Delta R.T.: -0.016 min
Response: 456737
Conc: 12.34 ng/ml