

Data Path : Z:\pestpcbsrv\HPCHEM1\ECD\_0\Data\P0091325\  
 Data File : PO113714.D  
 Signal(s) : Signal #1: ECD1A.ch Signal #2: ECD2B.ch  
 Acq On : 12 Sep 2025 17:27  
 Operator : YP/AJ  
 Sample : AR1248CCC500  
 Misc :  
 ALS Vial : 5 Sample Multiplier: 1

**Instrument :**  
 ECD\_0  
**ClientSampleId :**  
 AR1248CCC500

**Manual Integrations**  
**APPROVED**  
 Reviewed By :Yogesh Patel 09/15/2025  
 Supervised By :mohammad ahmed 09/16/2025

Integration File signal 1: autoint1.e  
 Integration File signal 2: autoint2.e  
 Quant Time: Sep 13 05:19:22 2025  
 Quant Method : Z:\pestpcbsrv\HPCHEM1\ECD\_0\methods\P0081825.M  
 Quant Title : GC EXTRACTABLES  
 QLast Update : Tue Sep 09 15:11:37 2025  
 Response via : Initial Calibration  
 Integrator: ChemStation

Volume Inj. : 2 µl  
 Signal #1 Phase : ZB-MR1 Signal #2 Phase: ZB-MR2  
 Signal #1 Info : 30Mx0.32mmx 0.50µ Signal #2 Info : 30M x 0.32mm x 0.25µm

Compound	RT#1	RT#2	Resp#1	Resp#2	ng/ml	ng/ml
-----						
System Monitoring Compounds						
1) SA Tetrachlo...	3.657	3.649	452.6E6	269.2E6	55.281	53.201
2) SA Decachlor...	8.668	8.613	260.6E6	88544735	37.595	46.729
Target Compounds						
21) L5 AR-1248-1	4.740	4.719	98417443	58135894	564.106m	521.343m
22) L5 AR-1248-2	4.978	4.955	122.6E6	82258394	506.976	511.879
23) L5 AR-1248-3	5.190	4.996	170.1E6	87053245	533.555m	513.102
24) L5 AR-1248-4	5.543	5.167	261.1E6	102.9E6	522.622	516.322
25) L5 AR-1248-5	5.585	5.555	180.6E6	103.1E6	528.756	485.539
-----						

(f)=RT Delta > 1/2 Window (#)=Amounts differ by > 25% (m)=manual int.

Data Path : Z:\pestpcbsrv\HPCHEM1\ECD\_O\Data\PO091325\  
 Data File : PO113714.D  
 Signal(s) : Signal #1: ECD1A.ch Signal #2: ECD2B.ch  
 Acq On : 12 Sep 2025 17:27  
 Operator : YP/AJ  
 Sample : AR1248CCC500  
 Misc :  
 ALS Vial : 5 Sample Multiplier: 1

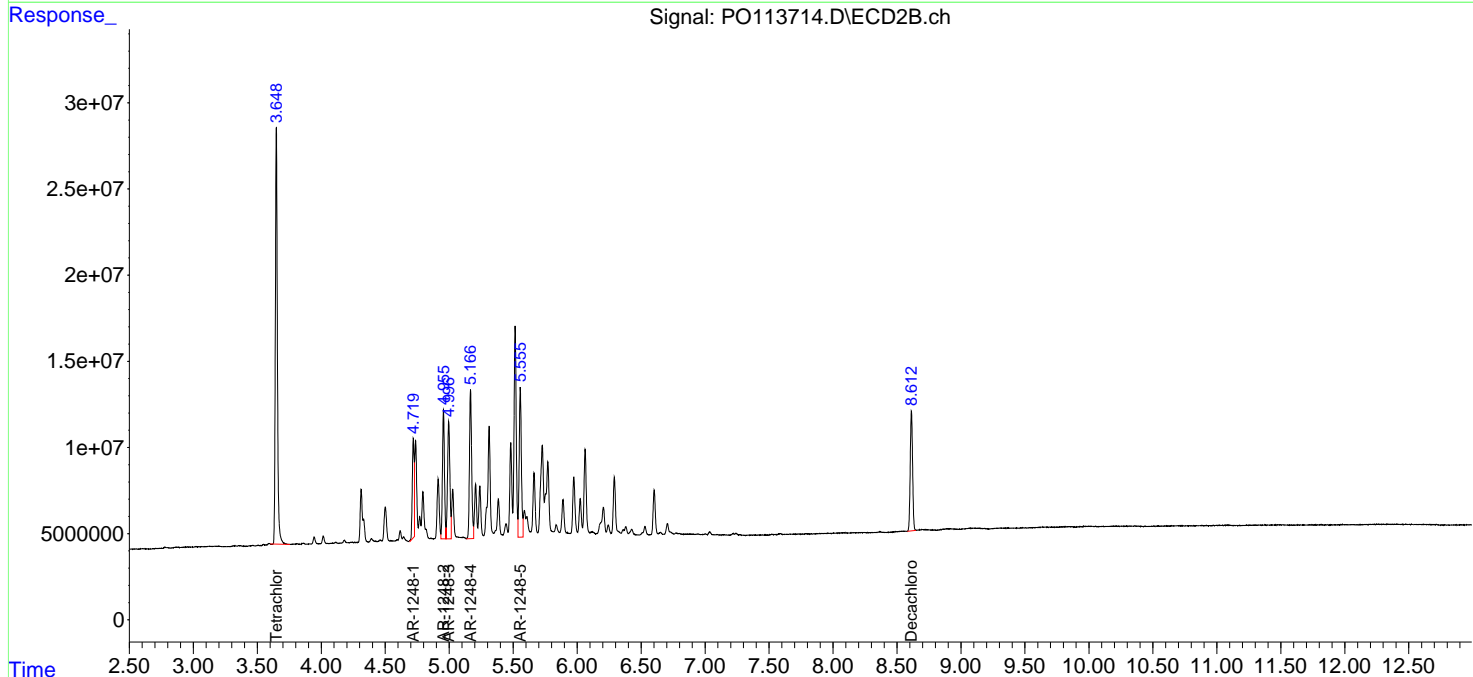
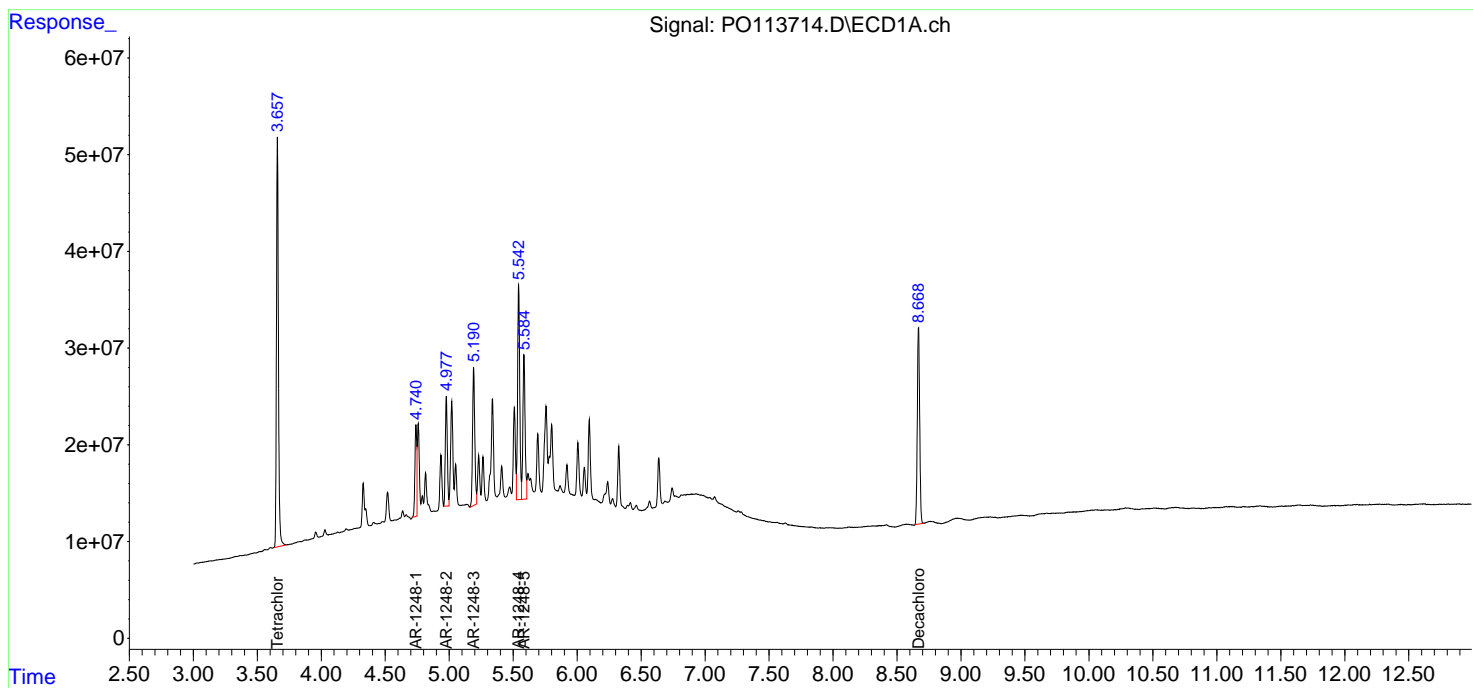
Instrument :  
 ECD\_O  
 ClientSampleId :  
 AR1248CCC500

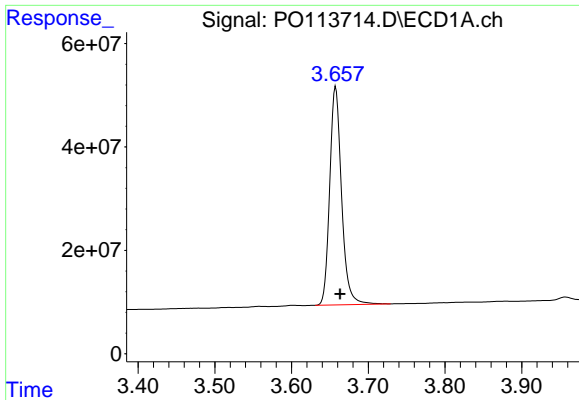
Manual Integrations  
 APPROVED

Reviewed By :Yogesh Patel 09/15/2025  
 Supervised By :mohammad ahmed 09/16/2025

Integration File signal 1: autoint1.e  
 Integration File signal 2: autoint2.e  
 Quant Time: Sep 13 05:19:22 2025  
 Quant Method : Z:\pestpcbsrv\HPCHEM1\ECD\_O\methods\PO081825.M  
 Quant Title : GC EXTRACTABLES  
 QLast Update : Tue Sep 09 15:11:37 2025  
 Response via : Initial Calibration  
 Integrator: ChemStation

Volume Inj. : 2 µl  
 Signal #1 Phase : ZB-MR1 Signal #2 Phase: ZB-MR2  
 Signal #1 Info : 30Mx0.32mmx 0.50µ Signal #2 Info : 30M x 0.32mm x 0.25µm





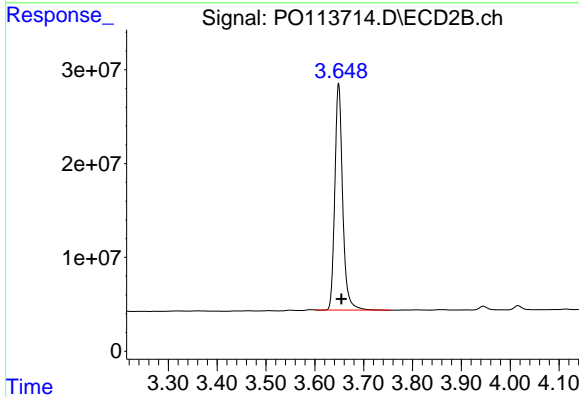
#1 Tetrachloro-m-xylene

R.T.: 3.657 min  
 Delta R.T.: -0.006 min  
 Response: 452562579  
 Conc: 55.28 ng/ml

Instrument :  
 ECD\_O  
 ClientSampleId :  
 AR1248CCC500

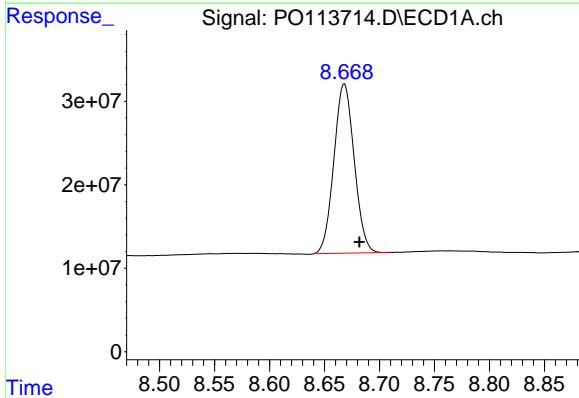
Manual Integrations  
 APPROVED

Reviewed By :Yogesh Patel 09/15/2025  
 Supervised By :mohammad ahmed 09/16/2025



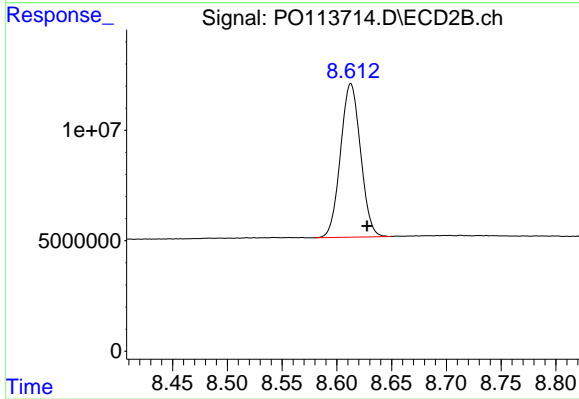
#1 Tetrachloro-m-xylene

R.T.: 3.649 min  
 Delta R.T.: -0.006 min  
 Response: 269230602  
 Conc: 53.20 ng/ml



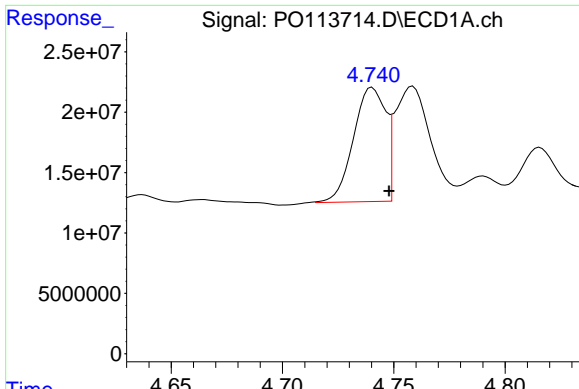
#2 Decachlorobiphenyl

R.T.: 8.668 min  
 Delta R.T.: -0.013 min  
 Response: 260584630  
 Conc: 37.59 ng/ml



#2 Decachlorobiphenyl

R.T.: 8.613 min  
 Delta R.T.: -0.015 min  
 Response: 88544735  
 Conc: 46.73 ng/ml

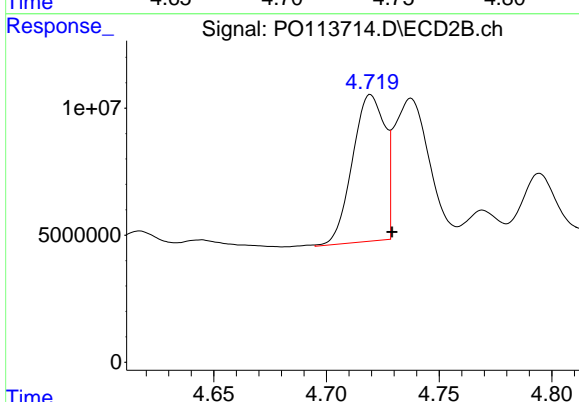


#21 AR-1248-1

R.T.: 4.740 min  
 Delta R.T.: -0.008 min  
 Response: 98417443  
 Conc: 564.11 ng/ml

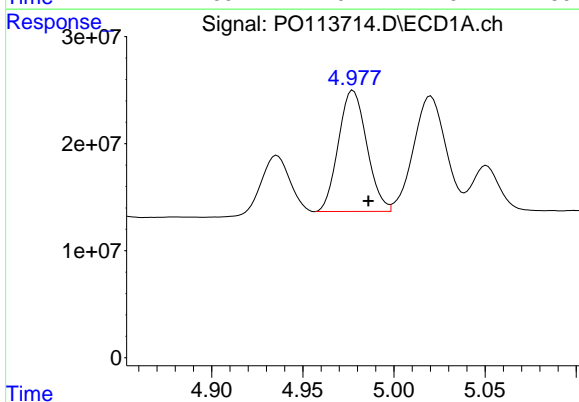
Instrument :  
 ECD\_O  
 ClientSampleId :  
 AR1248CCC500

**Manual Integrations**  
**APPROVED**  
 Reviewed By :Yogesh Patel 09/15/2025  
 Supervised By :mohammad ahmed 09/16/2025



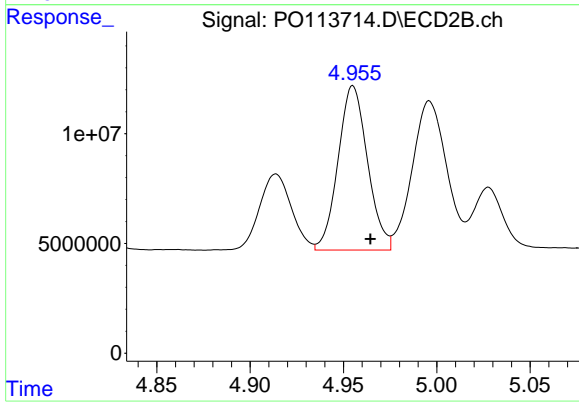
#21 AR-1248-1

R.T.: 4.719 min  
 Delta R.T.: -0.010 min  
 Response: 58135894  
 Conc: 521.34 ng/ml m



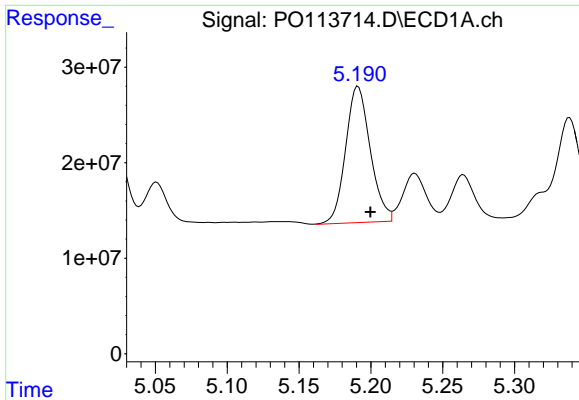
#22 AR-1248-2

R.T.: 4.978 min  
 Delta R.T.: -0.008 min  
 Response: 122620063  
 Conc: 506.98 ng/ml



#22 AR-1248-2

R.T.: 4.955 min  
 Delta R.T.: -0.009 min  
 Response: 82258394  
 Conc: 511.88 ng/ml



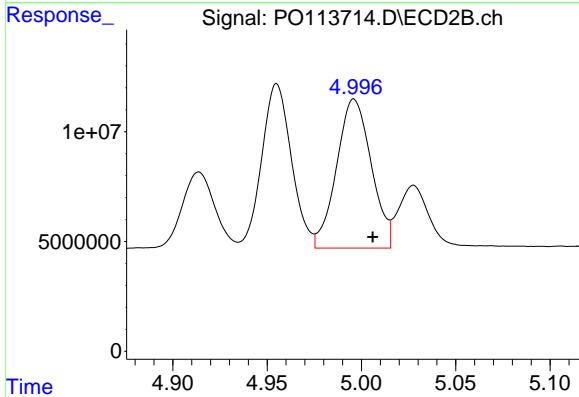
#23 AR-1248-3

R.T.: 5.190 min  
 Delta R.T.: -0.009 min  
 Response: 170131357  
 Conc: 533.55 ng/ml

Instrument :  
 ECD\_O  
 ClientSampleId :  
 AR1248CCC500

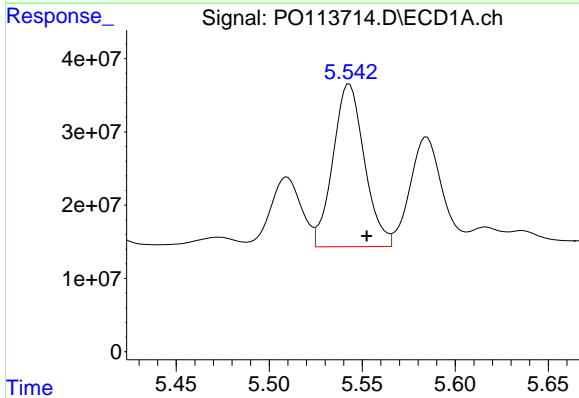
Manual Integrations  
 APPROVED

Reviewed By :Yogesh Patel 09/15/2025  
 Supervised By :mohammad ahmed 09/16/2025



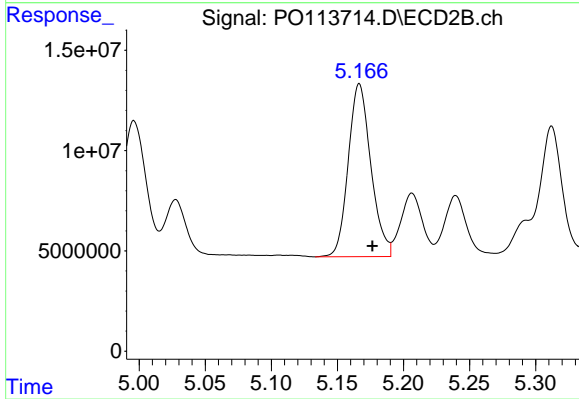
#23 AR-1248-3

R.T.: 4.996 min  
 Delta R.T.: -0.010 min  
 Response: 87053245  
 Conc: 513.10 ng/ml



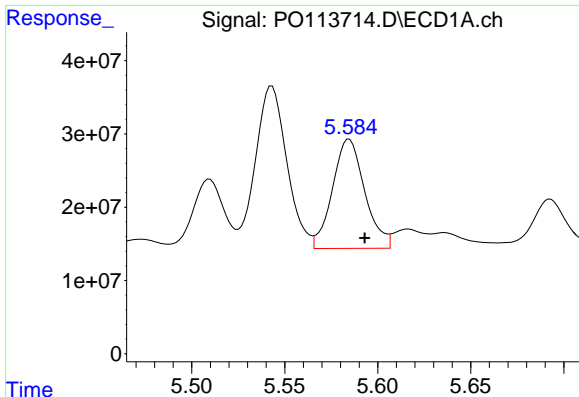
#24 AR-1248-4

R.T.: 5.543 min  
 Delta R.T.: -0.009 min  
 Response: 261104171  
 Conc: 522.62 ng/ml



#24 AR-1248-4

R.T.: 5.167 min  
 Delta R.T.: -0.010 min  
 Response: 102861644  
 Conc: 516.32 ng/ml



#25 AR-1248-5

R.T.: 5.585 min  
Delta R.T.: -0.008 min  
Response: 180565862  
Conc: 528.76 ng/ml

Instrument :

ECD\_O

ClientSampleId :

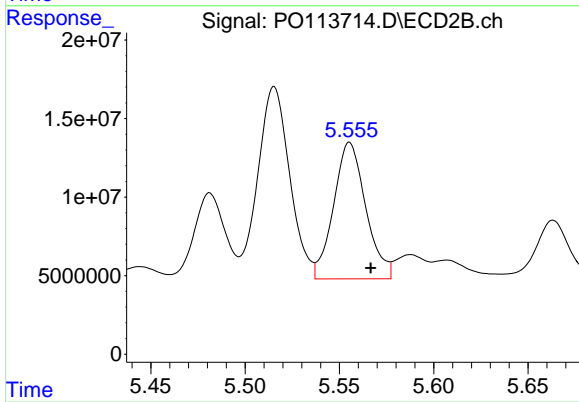
AR1248CCC500

Manual Integrations

APPROVED

Reviewed By :Yogesh Patel 09/15/2025

Supervised By :mohammad ahmed 09/16/2025



#25 AR-1248-5

R.T.: 5.555 min  
Delta R.T.: -0.011 min  
Response: 103078101  
Conc: 485.54 ng/ml