

Data Path : Z:\pestpcbsrv\HPCHEM1\ECD_0\Data\P0091418\
 Data File : P0049013.D
 Signal(s) : Signal #1: ECD1A.CH Signal #2: ECD2B.CH
 Acq On : 14 Sep 2018 21:17
 Operator : SM/SJ
 Sample : PB112874BSD
 Misc :
 ALS Vial : 26 Sample Multiplier: 1

Instrument :
 ECD_0
ClientSampleId :
 PB112874BSD

Manual Integrations
APPROVED
 Sohil
 9/17/2018 11:37:47 AM

Integration File signal 1: autoint1.e
 Integration File signal 2: autoint2.e
 Quant Time: Sep 14 23:13:15 2018
 Quant Method : Z:\pestpcbsrv\HPCHEM1\ECD_0\methods\P0091118.M
 Quant Title : GC EXTRACTABLES
 QLast Update : Wed Sep 12 08:13:07 2018
 Response via : Initial Calibration
 Integrator: ChemStation 6890 Scale Mode: Small noise peaks clipped

Volume Inj. : 2 µl
 Signal #1 Phase : ZB-MR1 Signal #2 Phase: ZB-MR2
 Signal #1 Info : 30Mx0.32mmx 0.50µ Signal #2 Info : 30M x 0.32mm x 0.25µm

Compound	RT#1	RT#2	Resp#1	Resp#2	ng/ml	ng/ml

System Monitoring Compounds						
1) SA Tetrachlo...	4.394	3.525	3075159	3905514	18.770	21.408
2) SA Decachlor...	10.109	8.459	3782059	4478893	16.976	24.136 #
Target Compounds						
3) L1 AR-1016-1	5.106	4.186	206368	281649	45.526m	55.476
4) L1 AR-1016-2	5.299	4.595	208041	476601	43.846m	61.559m#
5) L1 AR-1016-3	5.569	4.613	319953	577767	44.260m	55.931m#
6) L1 AR-1016-4	5.651	4.666	344940	359653	54.863	48.375m
7) L1 AR-1016-5	6.042	5.046	291232	319151	54.788m	46.004m
31) L7 AR-1260-1	7.170	6.058	493663	760160	39.483m	56.035m#
32) L7 AR-1260-2	7.427	6.245	654023	753278	47.138m	44.413m
33) L7 AR-1260-3	7.708	6.396	756800	893381	50.415m	55.594m
34) L7 AR-1260-4	8.009	6.903	475500	534633	47.520m	40.184m
35) L7 AR-1260-5	8.327	7.106	870781	1303494	42.807m	42.400m

(f)=RT Delta > 1/2 Window (#)=Amounts differ by > 25% (m)=manual int.

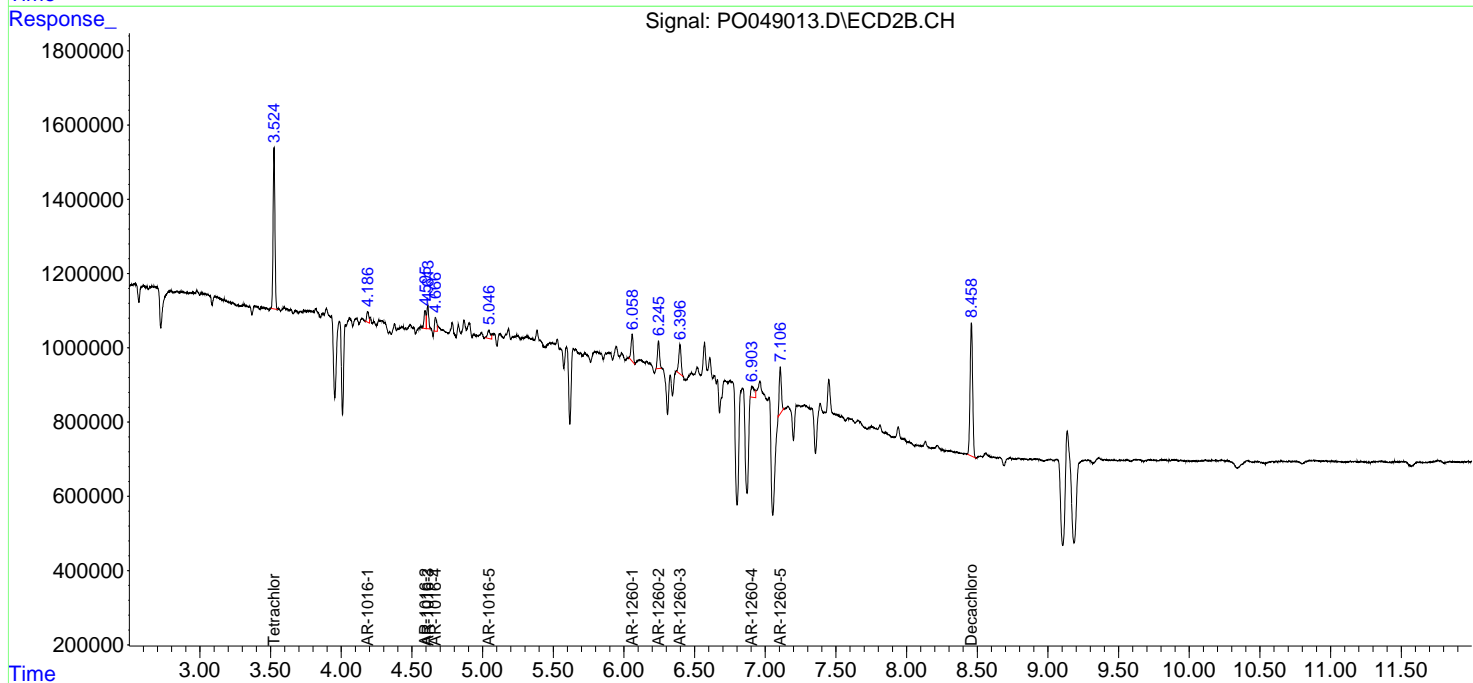
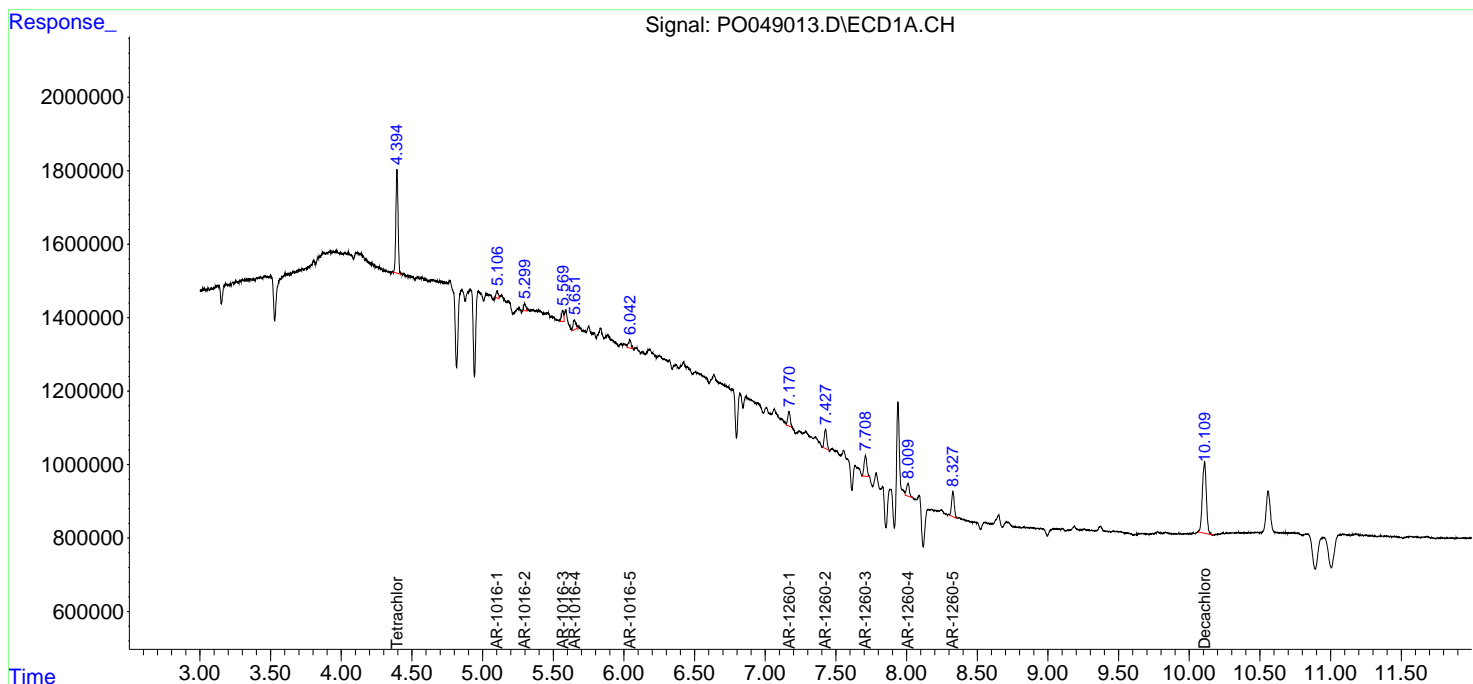
Data Path : Z:\pestpcbsrv\HPCHEM1\ECD_0\Data\PO091418\
 Data File : PO049013.D
 Signal(s) : Signal #1: ECD1A.CH Signal #2: ECD2B.CH
 Acq On : 14 Sep 2018 21:17
 Operator : SM/SJ
 Sample : PB112874BSD
 Misc :
 ALS Vial : 26 Sample Multiplier: 1

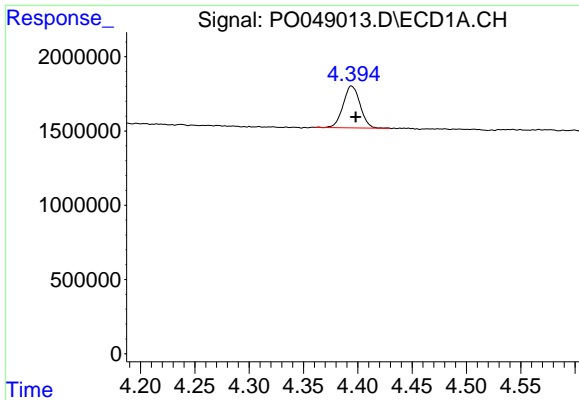
Instrument :
 ECD_O
 ClientSampleID :
 PB112874BSD

Manual Integrations
APPROVED
 Sohil
 9/17/2018 11:37:47 AM

Integration File signal 1: autoint1.e
 Integration File signal 2: autoint2.e
 Quant Time: Sep 14 23:13:15 2018
 Quant Method : Z:\pestpcbsrv\HPCHEM1\ECD_0\methods\PO091118.M
 Quant Title : GC EXTRACTABLES
 QLast Update : Wed Sep 12 08:13:07 2018
 Response via : Initial Calibration
 Integrator: ChemStation 6890 Scale Mode: Small noise peaks clipped

Volume Inj. : 2 µl
 Signal #1 Phase : ZB-MR1 Signal #2 Phase: ZB-MR2
 Signal #1 Info : 30Mx0.32mmx 0.50µ Signal #2 Info : 30M x 0.32mm x 0.25µm

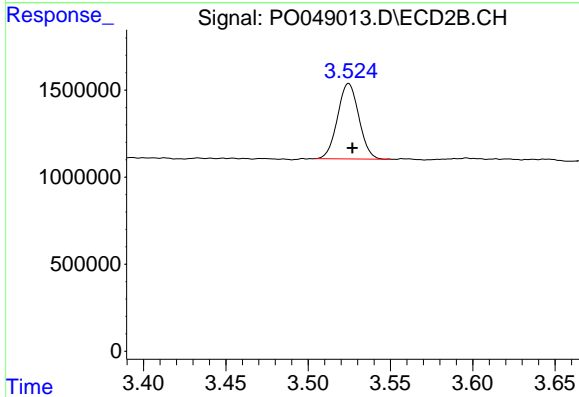




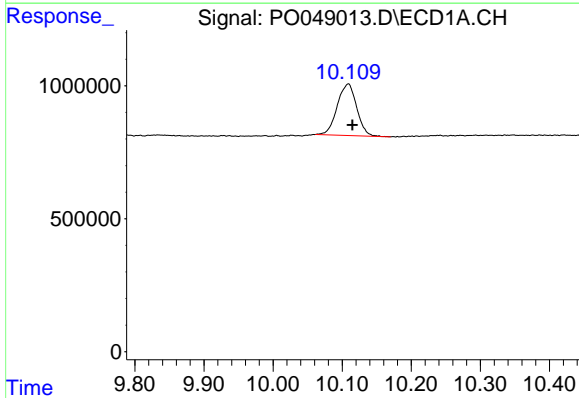
#1 Tetrachloro-m-xylene
 R.T.: 4.394 min
 Delta R.T.: -0.004 min
 Response: 3075159
 Conc: 18.77 ng/ml

Instrument :
 ECD_O
 ClientSampleId :
 PB112874BSD

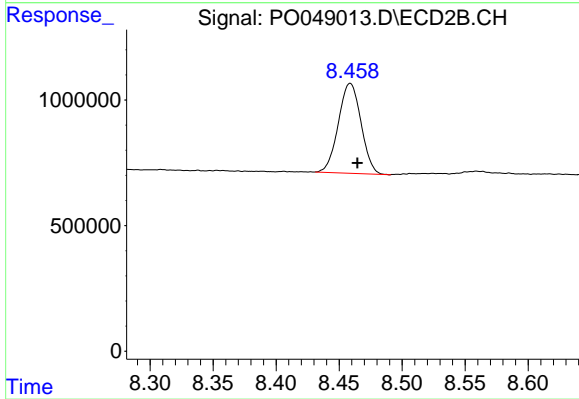
Manual Integrations
 APPROVED
 Sohil
 9/17/2018 11:37:47 AM



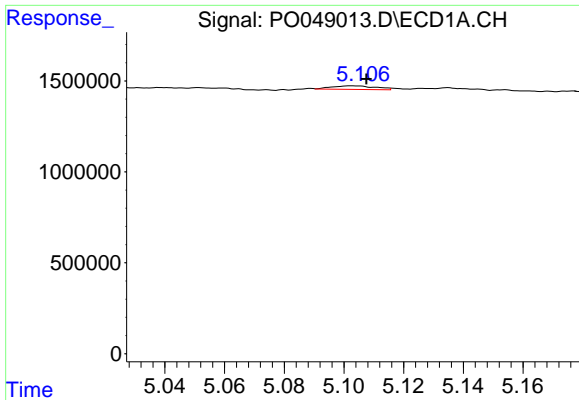
#1 Tetrachloro-m-xylene
 R.T.: 3.525 min
 Delta R.T.: -0.002 min
 Response: 3905514
 Conc: 21.41 ng/ml



#2 Decachlorobiphenyl
 R.T.: 10.109 min
 Delta R.T.: -0.006 min
 Response: 3782059
 Conc: 16.98 ng/ml



#2 Decachlorobiphenyl
 R.T.: 8.459 min
 Delta R.T.: -0.006 min
 Response: 4478893
 Conc: 24.14 ng/ml

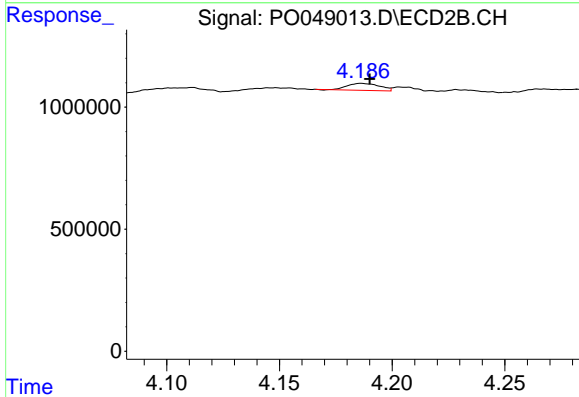


#3 AR-1016-1

R.T.: 5.106 min
 Delta R.T.: -0.002 min
 Response: 206368
 Conc: 45.53 ng/ml m

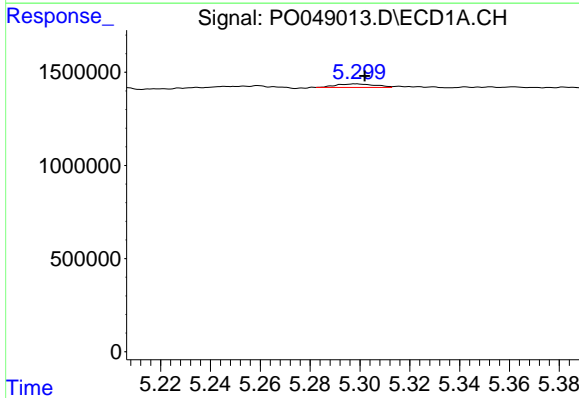
Instrument :
 ECD_O
ClientSampled :
 PB112874BSD

Manual Integrations
APPROVED
 Sohil
 9/17/2018 11:37:47 AM



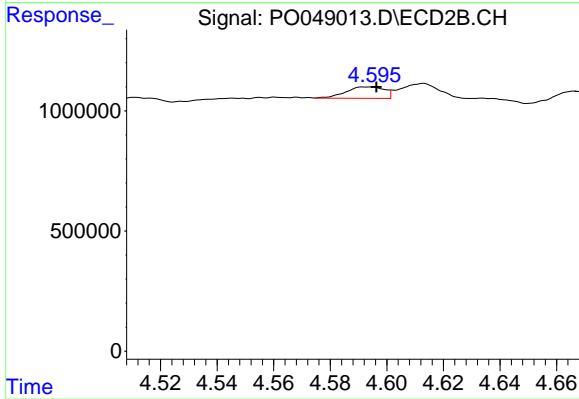
#3 AR-1016-1

R.T.: 4.186 min
 Delta R.T.: -0.004 min
 Response: 281649
 Conc: 55.48 ng/ml



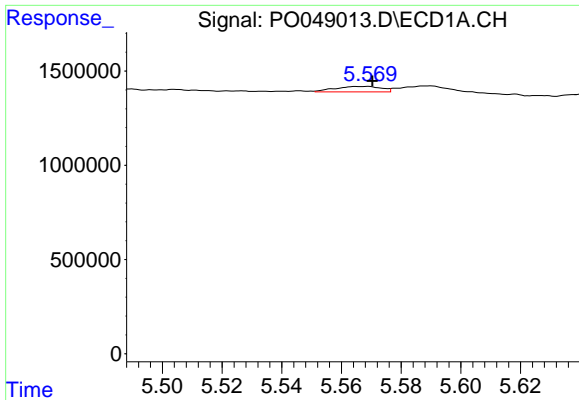
#4 AR-1016-2

R.T.: 5.299 min
 Delta R.T.: -0.003 min
 Response: 208041
 Conc: 43.85 ng/ml m



#4 AR-1016-2

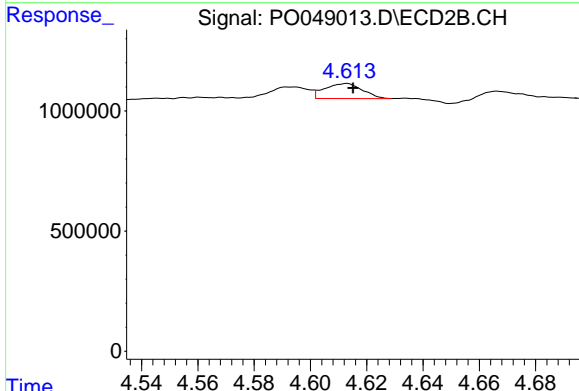
R.T.: 4.595 min
 Delta R.T.: -0.002 min
 Response: 476601
 Conc: 61.56 ng/ml m



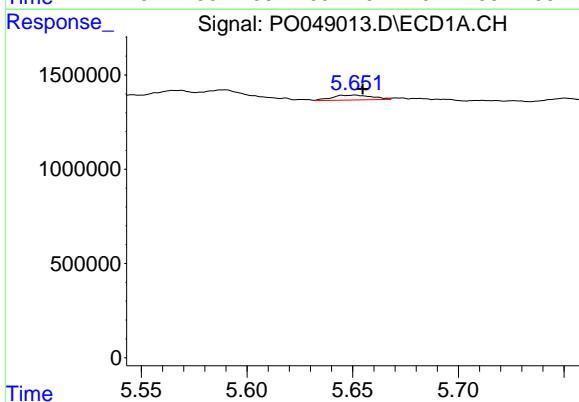
#5 AR-1016-3
 R.T.: 5.569 min
 Delta R.T.: -0.002 min
 Response: 319953
 Conc: 44.26 ng/ml m

Instrument :
 ECD_O
ClientSampled :
 PB112874BSD

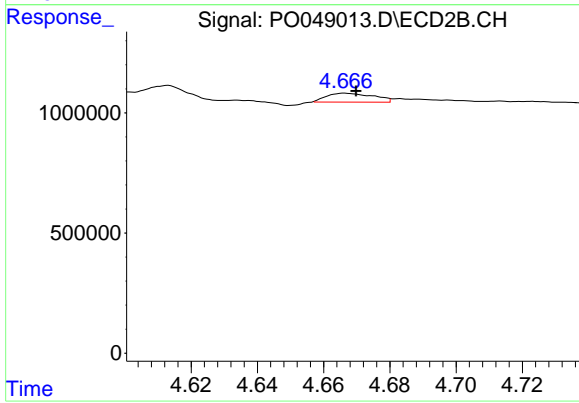
Manual Integrations
APPROVED
 Sohil
 9/17/2018 11:37:47 AM



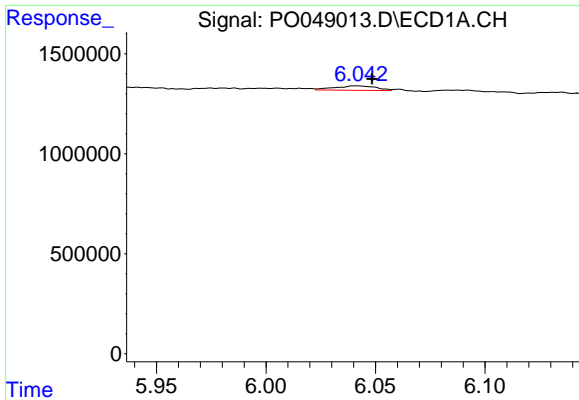
#5 AR-1016-3
 R.T.: 4.613 min
 Delta R.T.: -0.002 min
 Response: 577767
 Conc: 55.93 ng/ml m



#6 AR-1016-4
 R.T.: 5.651 min
 Delta R.T.: -0.004 min
 Response: 344940
 Conc: 54.86 ng/ml



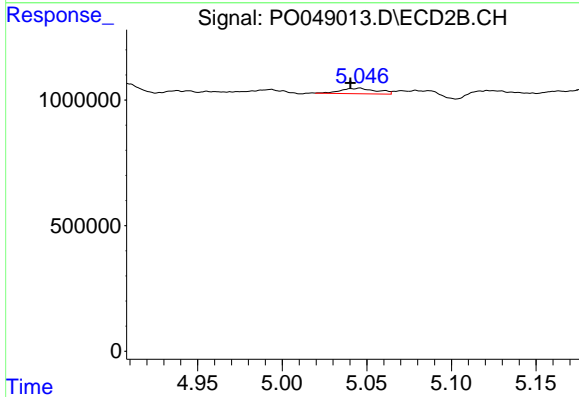
#6 AR-1016-4
 R.T.: 4.666 min
 Delta R.T.: -0.004 min
 Response: 359653
 Conc: 48.38 ng/ml m



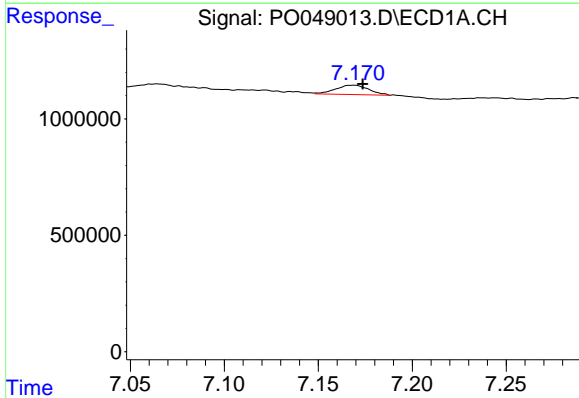
#7 AR-1016-5
 R.T.: 6.042 min
 Delta R.T.: -0.006 min
 Response: 291232
 Conc: 54.79 ng/ml m

Instrument :
 ECD_O
ClientSampled :
 PB112874BSD

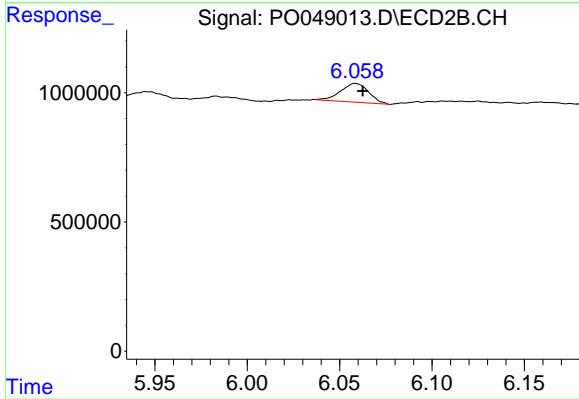
Manual Integrations
APPROVED
 Sohil
 9/17/2018 11:37:47 AM



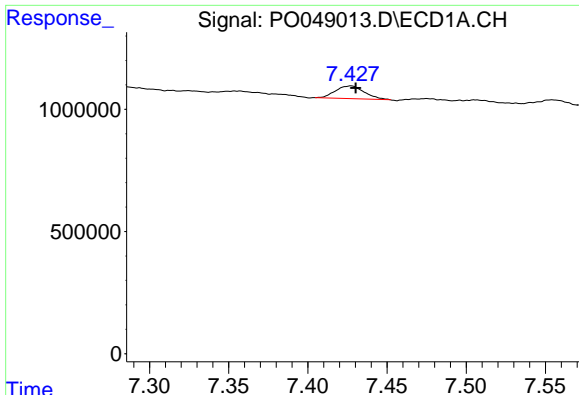
#7 AR-1016-5
 R.T.: 5.046 min
 Delta R.T.: 0.005 min
 Response: 319151
 Conc: 46.00 ng/ml m



#31 AR-1260-1
 R.T.: 7.170 min
 Delta R.T.: -0.004 min
 Response: 493663
 Conc: 39.48 ng/ml m



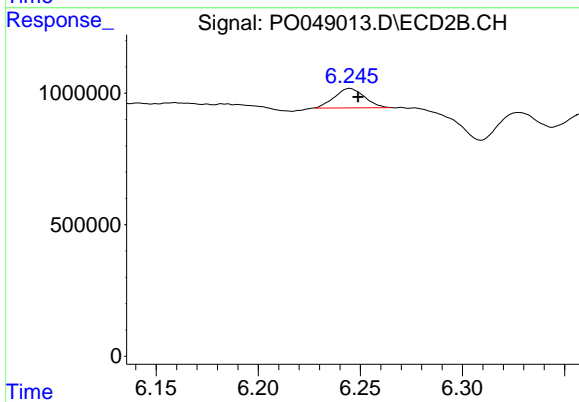
#31 AR-1260-1
 R.T.: 6.058 min
 Delta R.T.: -0.005 min
 Response: 760160
 Conc: 56.03 ng/ml m



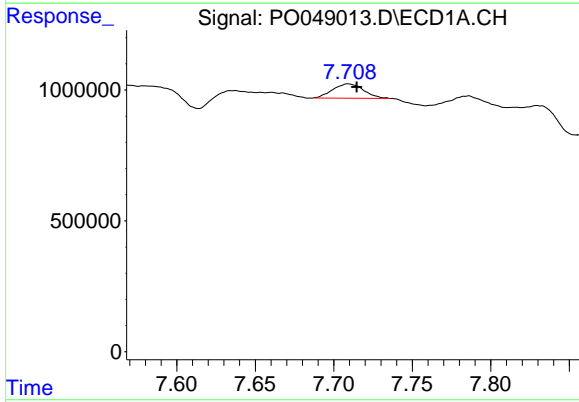
#32 AR-1260-2
 R.T.: 7.427 min
 Delta R.T.: -0.003 min
 Response: 654023
 Conc: 47.14 ng/ml m

Instrument :
 ECD_O
ClientSampled :
 PB112874BSD

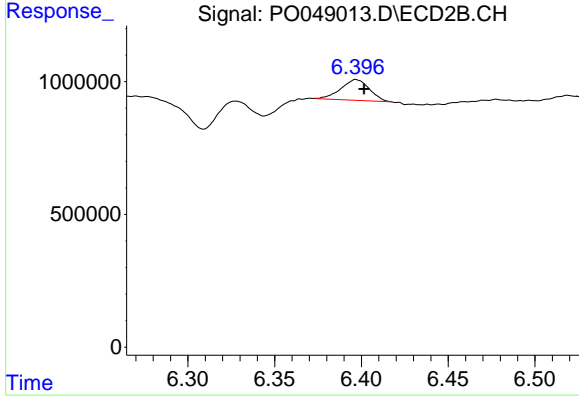
Manual Integrations
APPROVED
 Sohil
 9/17/2018 11:37:47 AM



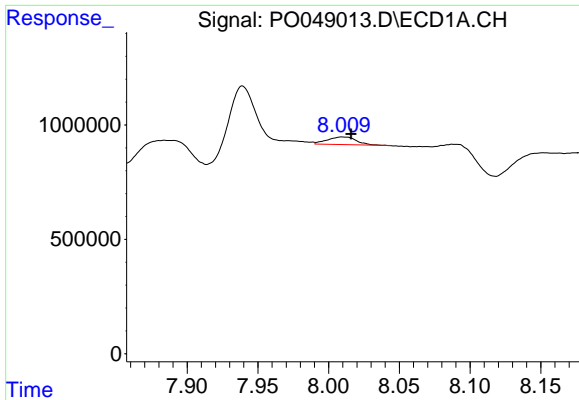
#32 AR-1260-2
 R.T.: 6.245 min
 Delta R.T.: -0.004 min
 Response: 753278
 Conc: 44.41 ng/ml m



#33 AR-1260-3
 R.T.: 7.708 min
 Delta R.T.: -0.006 min
 Response: 756800
 Conc: 50.42 ng/ml m



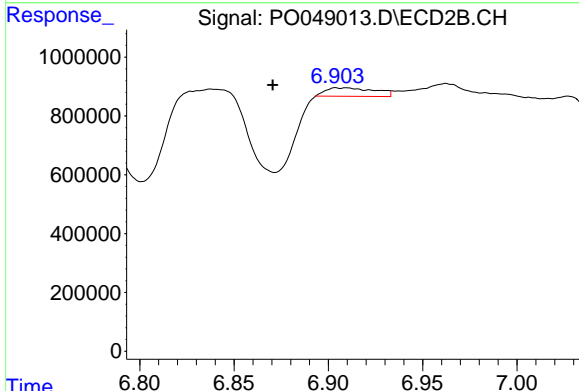
#33 AR-1260-3
 R.T.: 6.396 min
 Delta R.T.: -0.005 min
 Response: 893381
 Conc: 55.59 ng/ml m



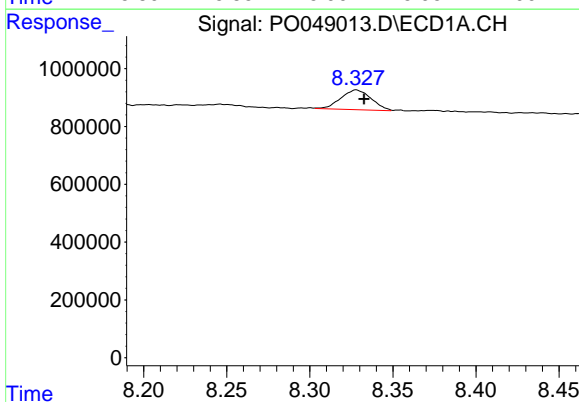
#34 AR-1260-4
 R.T.: 8.009 min
 Delta R.T.: -0.007 min
 Response: 475500
 Conc: 47.52 ng/ml m

Instrument :
 ECD_O
ClientSampled :
 PB112874BSD

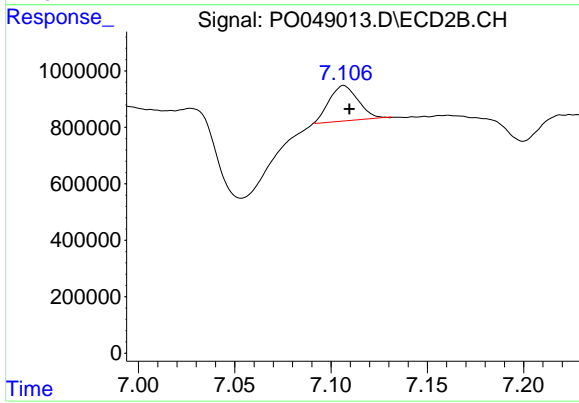
Manual Integrations
APPROVED
 Sohil
 9/17/2018 11:37:47 AM



#34 AR-1260-4
 R.T.: 6.903 min
 Delta R.T.: 0.033 min
 Response: 534633
 Conc: 40.18 ng/ml m



#35 AR-1260-5
 R.T.: 8.327 min
 Delta R.T.: -0.005 min
 Response: 870781
 Conc: 42.81 ng/ml m



#35 AR-1260-5
 R.T.: 7.106 min
 Delta R.T.: -0.003 min
 Response: 1303494
 Conc: 42.40 ng/ml m