

Data Path : Z:\pestpcbsrv\HPCHEM1\ECD\_0\Data\P0091521\  
 Data File : P0081223.D  
 Signal(s) : Signal #1: ECD1A.CH Signal #2: ECD2B.CH  
 Acq On : 15 Sep 2021 9:21  
 Operator : AJ\MA  
 Sample : AR1268CCC500  
 Misc :  
 ALS Vial : 7 Sample Multiplier: 1

Instrument :  
 ECD\_0  
 ClientSampleId :  
 AR1268CCC500

Integration File signal 1: autoint1.e  
 Integration File signal 2: autoint2.e  
 Quant Time: Sep 16 05:36:58 2021  
 Quant Method : Z:\pestpcbsrv\HPCHEM1\ECD\_0\methods\P0090221.M  
 Quant Title : GC EXTRACTABLES  
 QLast Update : Fri Sep 03 07:15:29 2021  
 Response via : Initial Calibration  
 Integrator: ChemStation 6890 Scale Mode: Small noise peaks clipped

Volume Inj. : 2 µl  
 Signal #1 Phase : ZB-MR1 Signal #2 Phase: ZB-MR2  
 Signal #1 Info : 30Mx0.32mmx 0.50µ Signal #2 Info : 30M x 0.32mm x 0.25µm

Compound	RT#1	RT#2	Resp#1	Resp#2	ng/ml	ng/ml
-----						
System Monitoring Compounds						
1) SA Tetrachlo...	4.927	4.053	4532743	1363578	57.418	55.179
2) SA Decachlor...	10.990	9.413	5630914	2100812	94.835	89.993
Target Compounds						
41) L9 AR-1268-1	9.460	8.303	4744889	1908108	514.065	504.925
42) L9 AR-1268-2	9.558	8.370	4432847	1715567	518.488	505.464
43) L9 AR-1268-3	9.785	8.577	3644397	1473997	512.217	498.985
44) L9 AR-1268-4	10.231	8.870	1685154	663260	535.214	504.053
45) L9 AR-1268-5	10.649	9.161	11690962	4317212	518.616	507.668
-----						

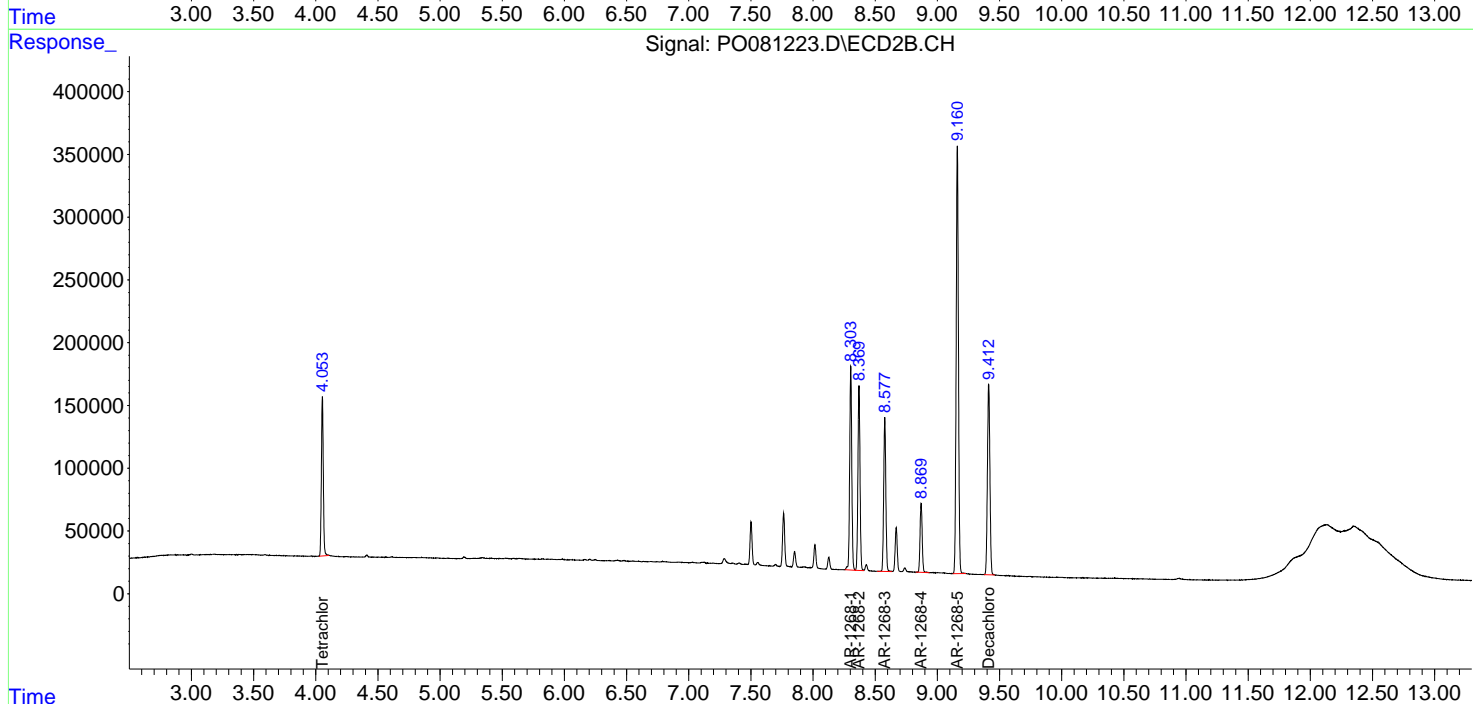
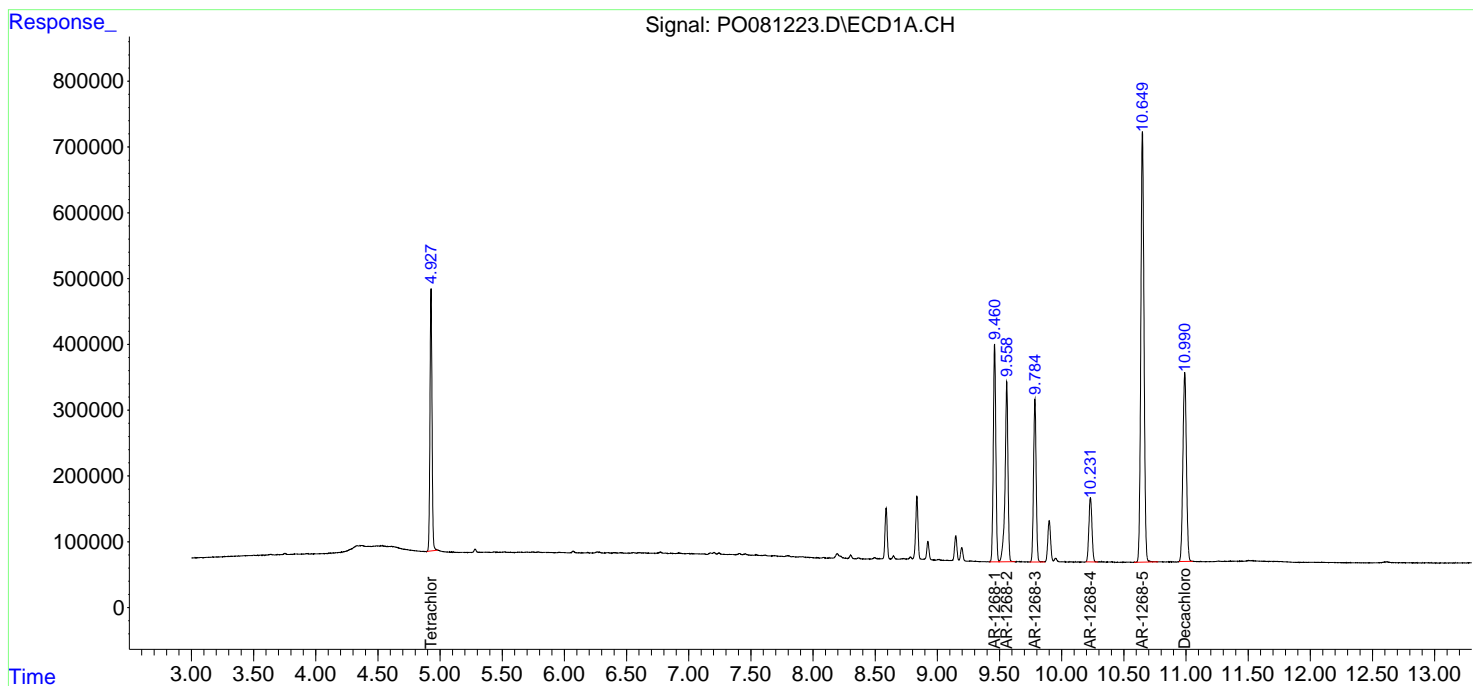
(f)=RT Delta > 1/2 Window (#)=Amounts differ by > 25% (m)=manual int.

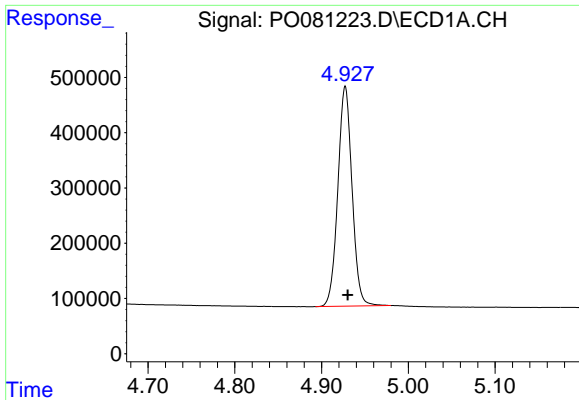
Data Path : Z:\pestpcbsrv\HPCHEM1\ECD\_0\Data\P0091521\  
 Data File : P0081223.D  
 Signal(s) : Signal #1: ECD1A.CH Signal #2: ECD2B.CH  
 Acq On : 15 Sep 2021 9:21  
 Operator : AJ\MA  
 Sample : AR1268CCC500  
 Misc :  
 ALS Vial : 7 Sample Multiplier: 1

Instrument :  
 ECD\_O  
 ClientSampleId :  
 AR1268CCC500

Integration File signal 1: autoint1.e  
 Integration File signal 2: autoint2.e  
 Quant Time: Sep 16 05:36:58 2021  
 Quant Method : Z:\pestpcbsrv\HPCHEM1\ECD\_0\methods\P0090221.M  
 Quant Title : GC EXTRACTABLES  
 QLast Update : Fri Sep 03 07:15:29 2021  
 Response via : Initial Calibration  
 Integrator: ChemStation 6890 Scale Mode: Small noise peaks clipped

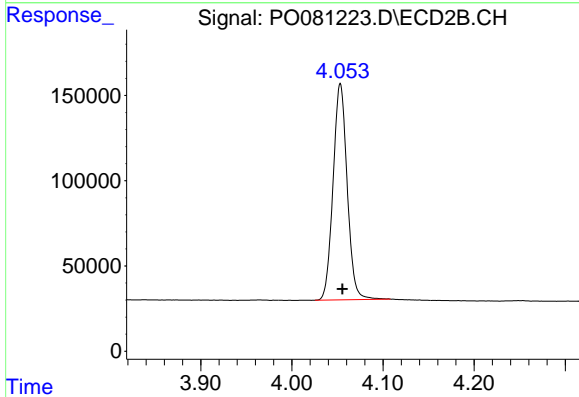
Volume Inj. : 2 µl  
 Signal #1 Phase : ZB-MR1 Signal #2 Phase: ZB-MR2  
 Signal #1 Info : 30Mx0.32mmx 0.50µ Signal #2 Info : 30M x 0.32mm x 0.25µm



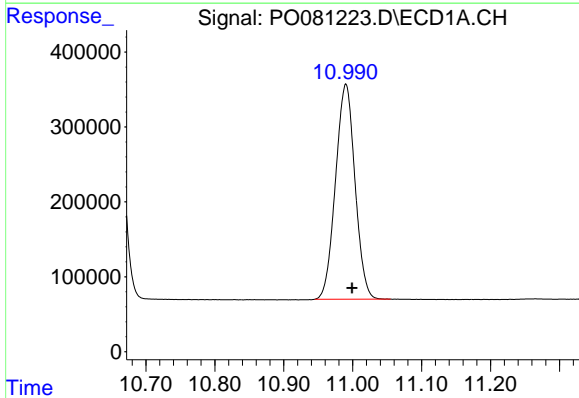


#1 Tetrachloro-m-xylene  
 R.T.: 4.927 min  
 Delta R.T.: -0.003 min  
 Response: 4532743  
 Conc: 57.42 ng/ml

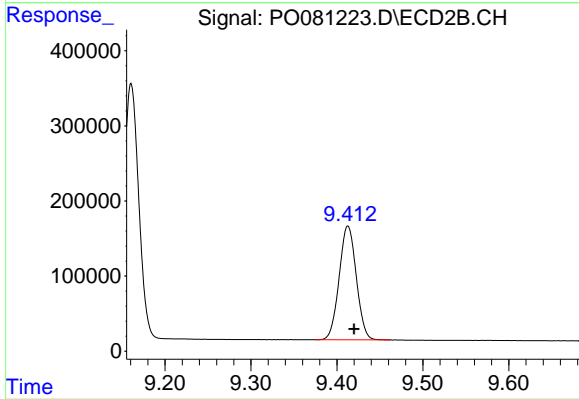
**Instrument :**  
 ECD\_O  
**ClientSampleId :**  
 AR1268CCC500



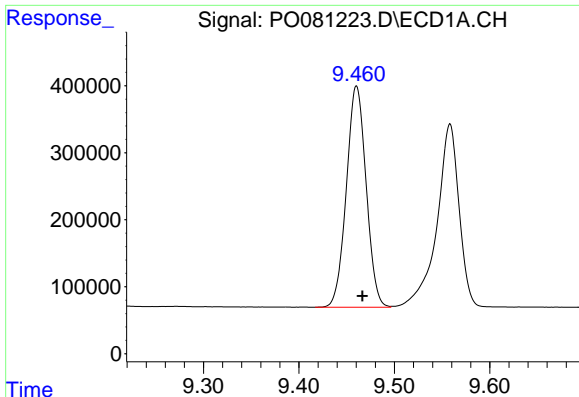
#1 Tetrachloro-m-xylene  
 R.T.: 4.053 min  
 Delta R.T.: -0.002 min  
 Response: 1363578  
 Conc: 55.18 ng/ml



#2 Decachlorobiphenyl  
 R.T.: 10.990 min  
 Delta R.T.: -0.009 min  
 Response: 5630914  
 Conc: 94.84 ng/ml



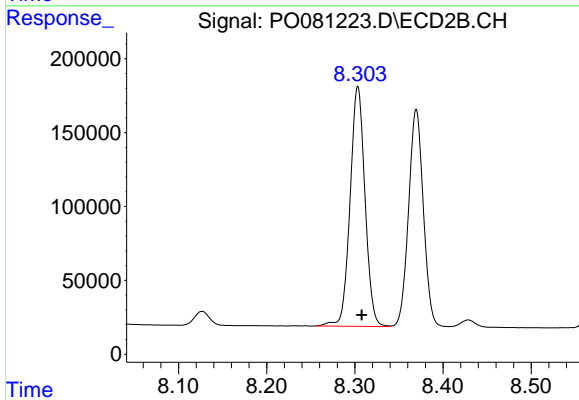
#2 Decachlorobiphenyl  
 R.T.: 9.413 min  
 Delta R.T.: -0.007 min  
 Response: 2100812  
 Conc: 89.99 ng/ml



#41 AR-1268-1

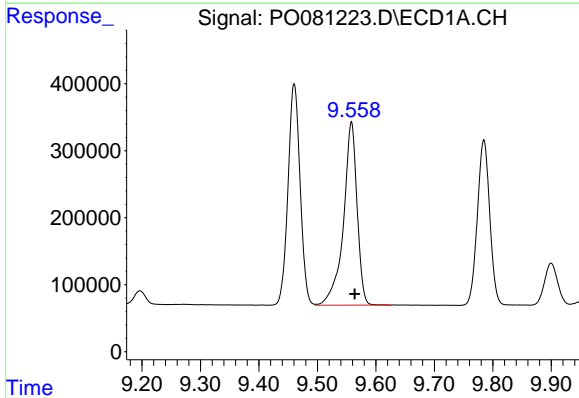
R.T.: 9.460 min  
Delta R.T.: -0.006 min  
Response: 4744889  
Conc: 514.06 ng/ml

Instrument :  
ECD\_O  
ClientSampleId :  
AR1268CCC500



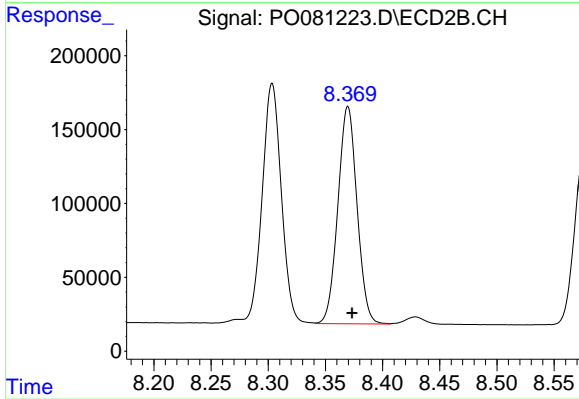
#41 AR-1268-1

R.T.: 8.303 min  
Delta R.T.: -0.004 min  
Response: 1908108  
Conc: 504.93 ng/ml



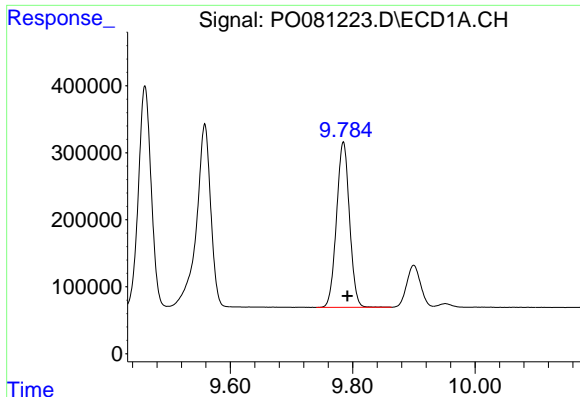
#42 AR-1268-2

R.T.: 9.558 min  
Delta R.T.: -0.006 min  
Response: 4432847  
Conc: 518.49 ng/ml



#42 AR-1268-2

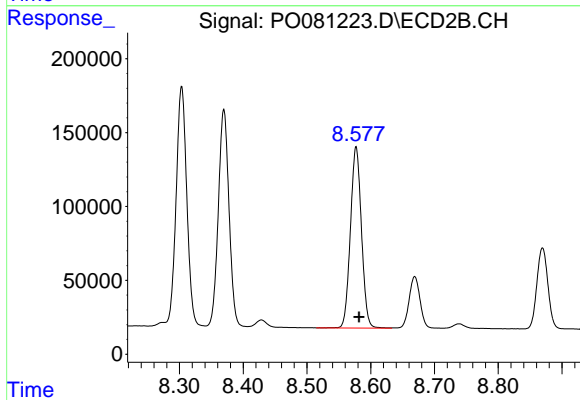
R.T.: 8.370 min  
Delta R.T.: -0.004 min  
Response: 1715567  
Conc: 505.46 ng/ml



#43 AR-1268-3

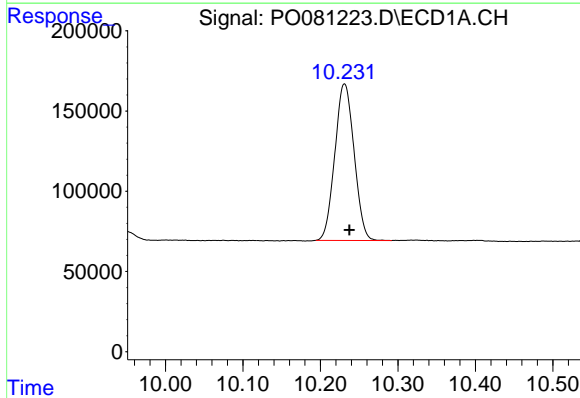
R.T.: 9.785 min  
 Delta R.T.: -0.006 min  
 Response: 3644397  
 Conc: 512.22 ng/ml

Instrument :  
 ECD\_O  
 ClientSampleId :  
 AR1268CCC500



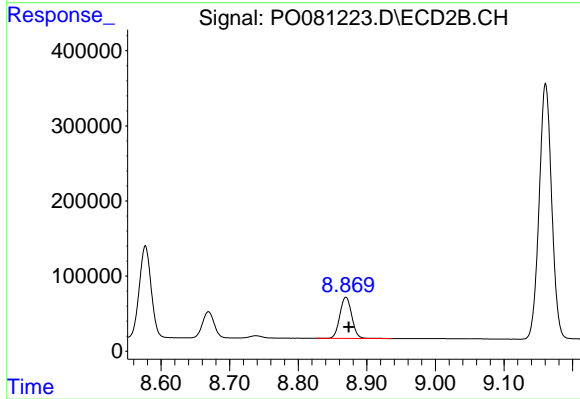
#43 AR-1268-3

R.T.: 8.577 min  
 Delta R.T.: -0.005 min  
 Response: 1473997  
 Conc: 498.99 ng/ml



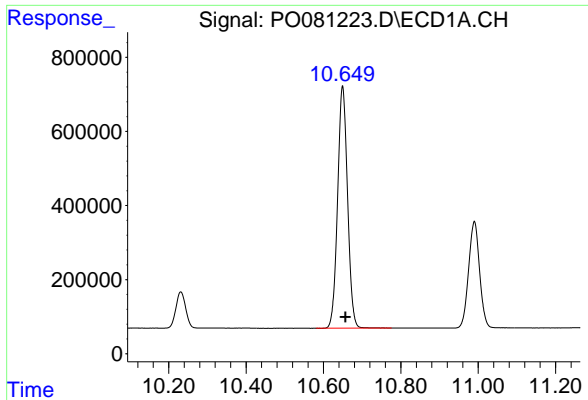
#44 AR-1268-4

R.T.: 10.231 min  
 Delta R.T.: -0.006 min  
 Response: 1685154  
 Conc: 535.21 ng/ml



#44 AR-1268-4

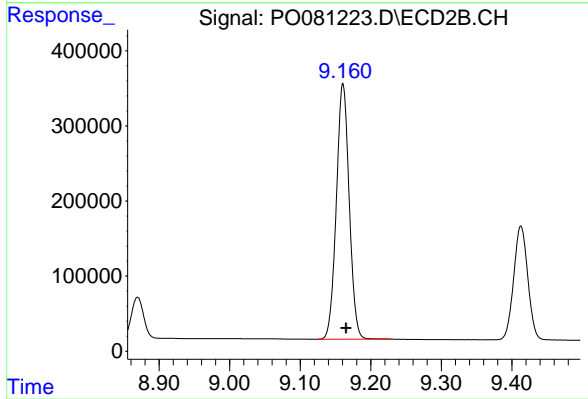
R.T.: 8.870 min  
 Delta R.T.: -0.004 min  
 Response: 663260  
 Conc: 504.05 ng/ml



#45 AR-1268-5

R.T.: 10.649 min  
Delta R.T.: -0.007 min  
Response: 11690962  
Conc: 518.62 ng/ml

Instrument :  
ECD\_O  
ClientSampleId :  
AR1268CCC500



#45 AR-1268-5

R.T.: 9.161 min  
Delta R.T.: -0.005 min  
Response: 4317212  
Conc: 507.67 ng/ml