

Data Path : Z:\pestpcbsrv\HPCHEM1\ECD\_0\Data\P0091521\  
 Data File : P0081241.D  
 Signal(s) : Signal #1: ECD1A.CH Signal #2: ECD2B.CH  
 Acq On : 15 Sep 2021 16:23  
 Operator : AJ\MA  
 Sample : PB139112BL  
 Misc :  
 ALS Vial : 20 Sample Multiplier: 1

Instrument :  
 ECD\_0  
 ClientSampleId :  
 PB139112BL

Integration File signal 1: autoint1.e  
 Integration File signal 2: autoint2.e  
 Quant Time: Sep 16 05:42:35 2021  
 Quant Method : Z:\pestpcbsrv\HPCHEM1\ECD\_0\methods\P0090221.M  
 Quant Title : GC EXTRACTABLES  
 QLast Update : Fri Sep 03 07:15:29 2021  
 Response via : Initial Calibration  
 Integrator: ChemStation 6890 Scale Mode: Small noise peaks clipped

Volume Inj. : 2 µl  
 Signal #1 Phase : ZB-MR1 Signal #2 Phase: ZB-MR2  
 Signal #1 Info : 30Mx0.32mmx 0.50µ Signal #2 Info : 30M x 0.32mm x 0.25µm

Compound	RT#1	RT#2	Resp#1	Resp#2	ng/ml	ng/ml
-----						
System Monitoring Compounds						
1) SA Tetrachlo...	4.928	4.055	1771528	560798	22.441	22.693
2) SA Decachlor...	10.991	9.415	1474750	579453	24.838	24.822

Target Compounds

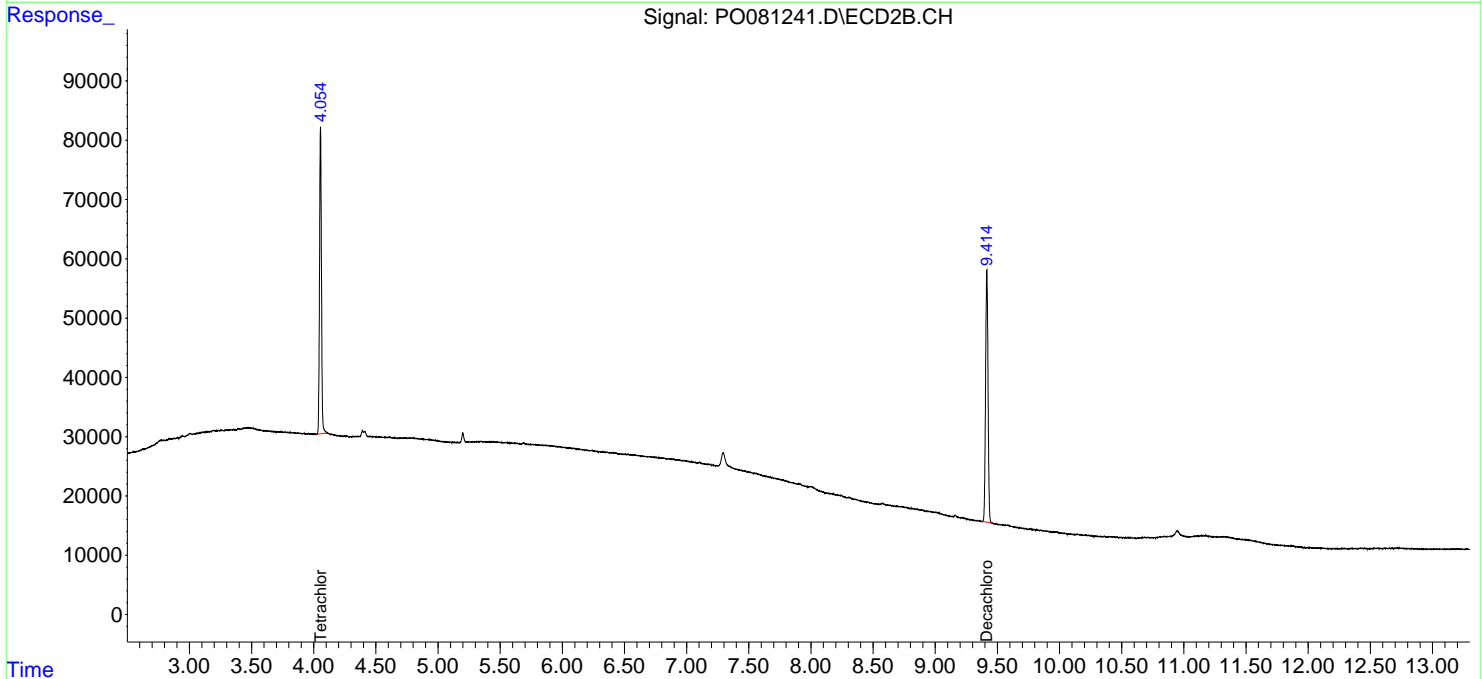
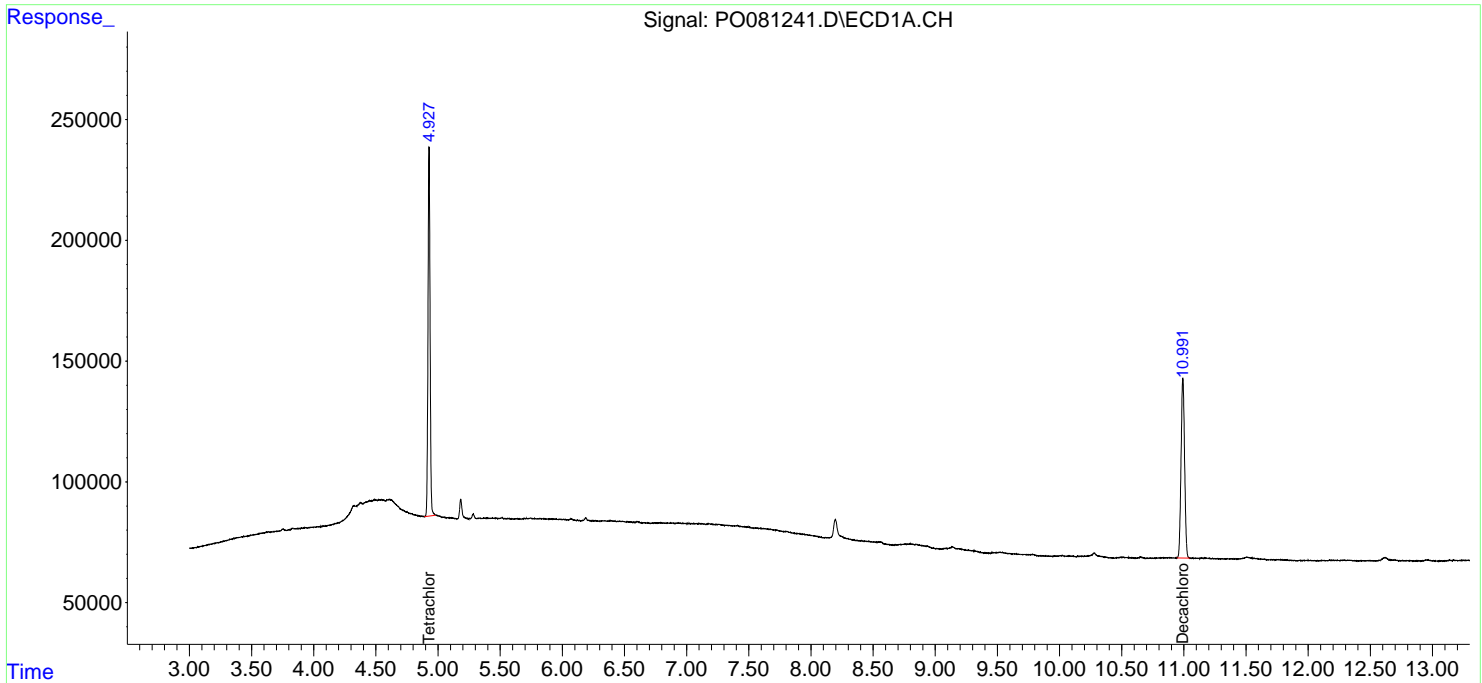
(f)=RT Delta > 1/2 Window (#)=Amounts differ by > 25% (m)=manual int.

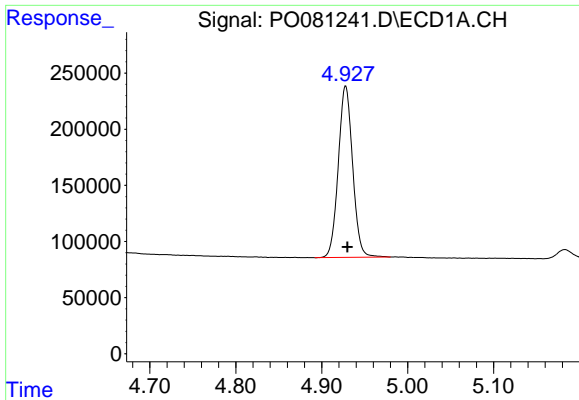
Data Path : Z:\pestpcbsrv\HPCHEM1\ECD\_0\Data\P0091521\  
 Data File : P0081241.D  
 Signal(s) : Signal #1: ECD1A.CH Signal #2: ECD2B.CH  
 Acq On : 15 Sep 2021 16:23  
 Operator : AJ\MA  
 Sample : PB139112BL  
 Misc :  
 ALS Vial : 20 Sample Multiplier: 1

Instrument :  
 ECD\_O  
 ClientSampleId :  
 PB139112BL

Integration File signal 1: autoint1.e  
 Integration File signal 2: autoint2.e  
 Quant Time: Sep 16 05:42:35 2021  
 Quant Method : Z:\pestpcbsrv\HPCHEM1\ECD\_0\methods\P0090221.M  
 Quant Title : GC EXTRACTABLES  
 QLast Update : Fri Sep 03 07:15:29 2021  
 Response via : Initial Calibration  
 Integrator: ChemStation 6890 Scale Mode: Small noise peaks clipped

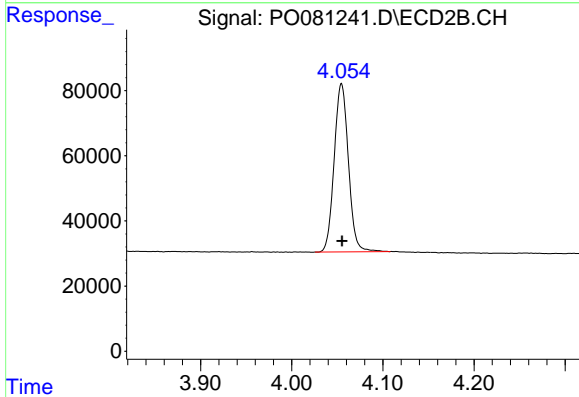
Volume Inj. : 2 µl  
 Signal #1 Phase : ZB-MR1 Signal #2 Phase: ZB-MR2  
 Signal #1 Info : 30Mx0.32mmx 0.50µ Signal #2 Info : 30M x 0.32mm x 0.25µm



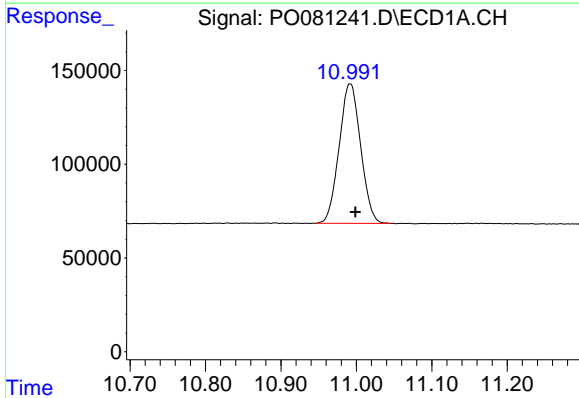


#1 Tetrachloro-m-xylene  
 R.T.: 4.928 min  
 Delta R.T.: -0.002 min  
 Response: 1771528  
 Conc: 22.44 ng/ml

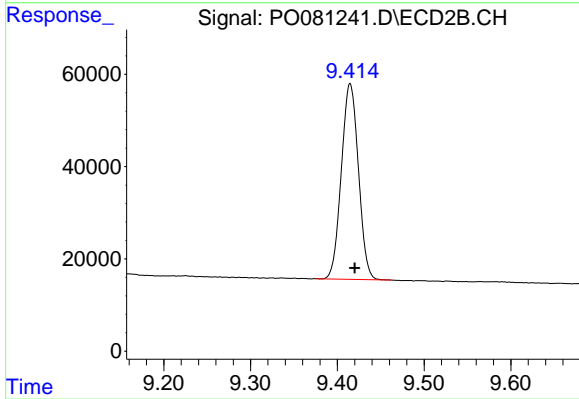
Instrument :  
 ECD\_O  
 ClientSampleId :  
 PB139112BL



#1 Tetrachloro-m-xylene  
 R.T.: 4.055 min  
 Delta R.T.: 0.000 min  
 Response: 560798  
 Conc: 22.69 ng/ml



#2 Decachlorobiphenyl  
 R.T.: 10.991 min  
 Delta R.T.: -0.007 min  
 Response: 1474750  
 Conc: 24.84 ng/ml



#2 Decachlorobiphenyl  
 R.T.: 9.415 min  
 Delta R.T.: -0.005 min  
 Response: 579453  
 Conc: 24.82 ng/ml