

Data Path : Z:\pestpcbsrv\HPCHEM1\ECD\_0\Data\P0091521\  
 Data File : P0081242.D  
 Signal(s) : Signal #1: ECD1A.CH Signal #2: ECD2B.CH  
 Acq On : 15 Sep 2021 16:40  
 Operator : AJ\MA  
 Sample : PB139112BS  
 Misc :  
 ALS Vial : 21 Sample Multiplier: 1

Instrument :  
 ECD\_0  
 ClientSampleId :  
 PB139112BS

Integration File signal 1: autoint1.e  
 Integration File signal 2: autoint2.e  
 Quant Time: Sep 16 05:42:49 2021  
 Quant Method : Z:\pestpcbsrv\HPCHEM1\ECD\_0\methods\P0090221.M  
 Quant Title : GC EXTRACTABLES  
 QLast Update : Fri Sep 03 07:15:29 2021  
 Response via : Initial Calibration  
 Integrator: ChemStation 6890 Scale Mode: Small noise peaks clipped

Volume Inj. : 2 µl  
 Signal #1 Phase : ZB-MR1 Signal #2 Phase: ZB-MR2  
 Signal #1 Info : 30Mx0.32mmx 0.50µ Signal #2 Info : 30M x 0.32mm x 0.25µm

Compound	RT#1	RT#2	Resp#1	Resp#2	ng/ml	ng/ml
-----						
System Monitoring Compounds						
1) SA Tetrachlo...	4.928	4.054	1742280	524446	22.070	21.222
2) SA Decachlor...	10.994	9.416	1452549	573299	24.464	24.558
Target Compounds						
3) L1 AR-1016-1	6.259	5.326	1563138	503176	551.199	521.685
4) L1 AR-1016-2	6.283	5.346	2174179	697357	544.903	521.408
5) L1 AR-1016-3	6.349	5.541	1363826	378799	538.942	529.866
6) L1 AR-1016-4	6.457	5.592	1128326	312388	532.575	519.685
7) L1 AR-1016-5	6.774	5.823	1116423	388768	568.704	516.457
31) L7 AR-1260-1	7.956	6.927	2006850	737968	577.338	502.842
32) L7 AR-1260-2	8.223	7.125	2504764	892078	562.023	508.219
33) L7 AR-1260-3	8.589	7.282	1493739	861885	569.218	470.800
34) L7 AR-1260-4	8.821	7.768	1825863	615759	570.397	521.215
35) L7 AR-1260-5	9.150	8.017	3267186	1397587	545.746	493.714

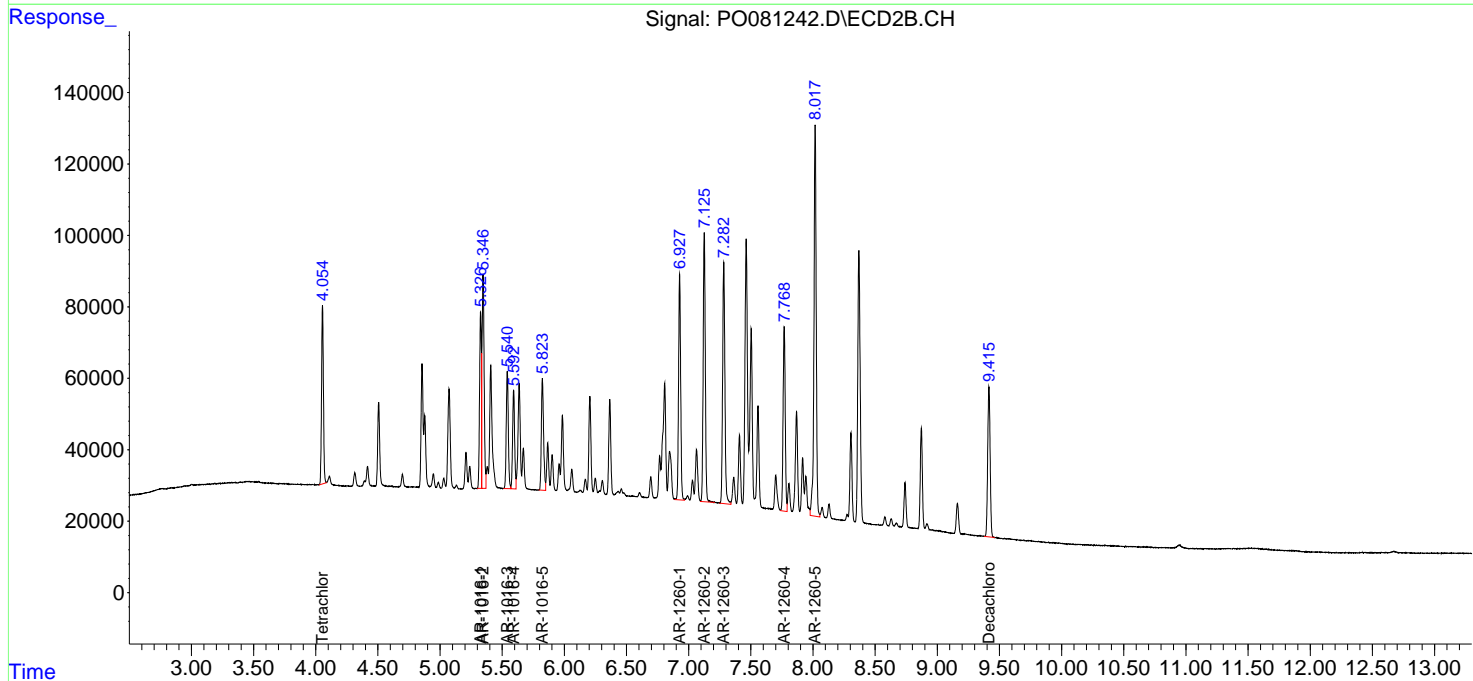
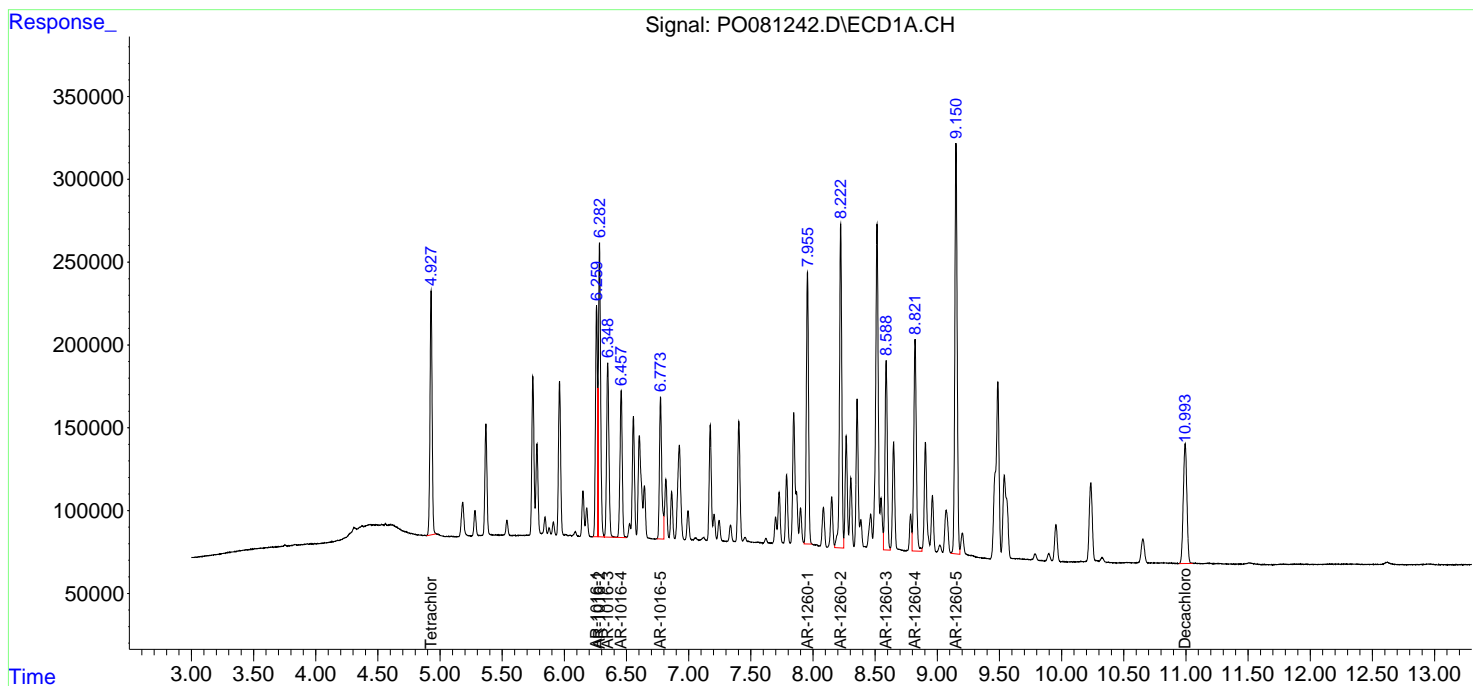
(f)=RT Delta > 1/2 Window (#)=Amounts differ by > 25% (m)=manual int.

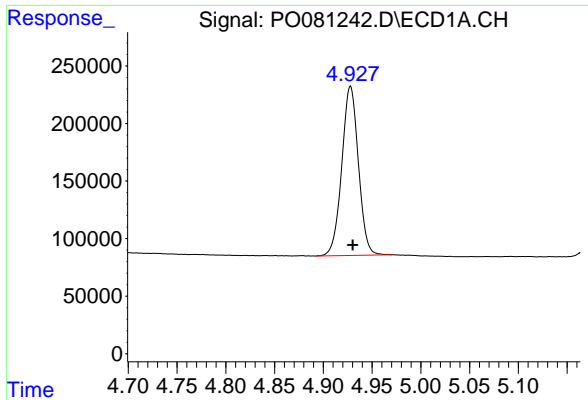
Data Path : Z:\pestpcbsrv\HPCHEM1\ECD\_O\Data\P0091521\  
 Data File : P0081242.D  
 Signal(s) : Signal #1: ECD1A.CH Signal #2: ECD2B.CH  
 Acq On : 15 Sep 2021 16:40  
 Operator : AJ\MA  
 Sample : PB139112BS  
 Misc :  
 ALS Vial : 21 Sample Multiplier: 1

Instrument :  
 ECD\_O  
 ClientSampled :  
 PB139112BS

Integration File signal 1: autoint1.e  
 Integration File signal 2: autoint2.e  
 Quant Time: Sep 16 05:42:49 2021  
 Quant Method : Z:\pestpcbsrv\HPCHEM1\ECD\_O\methods\P0090221.M  
 Quant Title : GC EXTRACTABLES  
 QLast Update : Fri Sep 03 07:15:29 2021  
 Response via : Initial Calibration  
 Integrator: ChemStation 6890 Scale Mode: Small noise peaks clipped

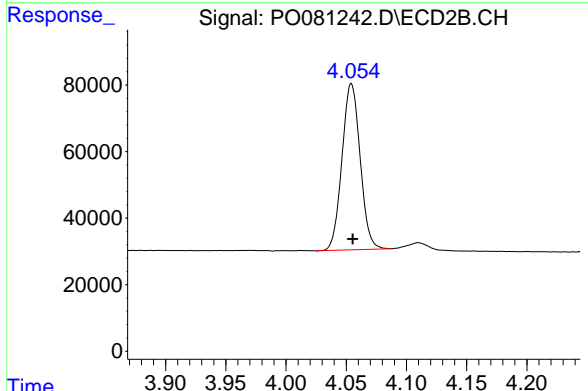
Volume Inj. : 2 µl  
 Signal #1 Phase : ZB-MR1 Signal #2 Phase: ZB-MR2  
 Signal #1 Info : 30Mx0.32mmx 0.50µ Signal #2 Info : 30M x 0.32mm x 0.25µm



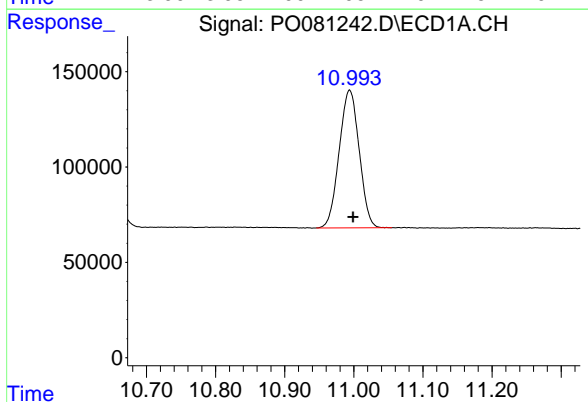


#1 Tetrachloro-m-xylene  
 R.T.: 4.928 min  
 Delta R.T.: -0.002 min  
 Response: 1742280  
 Conc: 22.07 ng/ml

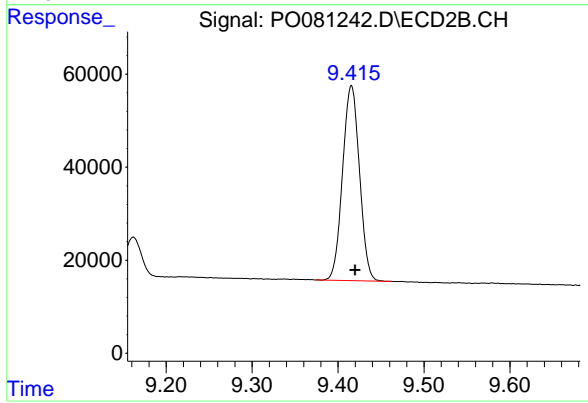
Instrument :  
 ECD\_O  
 ClientSampleId :  
 PB139112BS



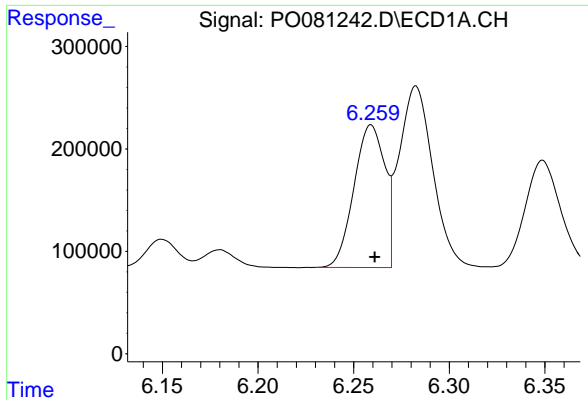
#1 Tetrachloro-m-xylene  
 R.T.: 4.054 min  
 Delta R.T.: -0.001 min  
 Response: 524446  
 Conc: 21.22 ng/ml



#2 Decachlorobiphenyl  
 R.T.: 10.994 min  
 Delta R.T.: -0.005 min  
 Response: 1452549  
 Conc: 24.46 ng/ml

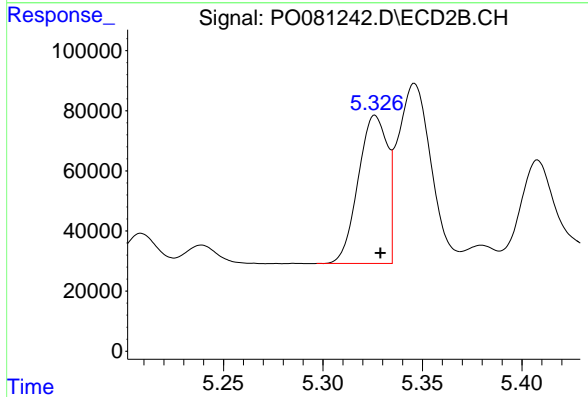


#2 Decachlorobiphenyl  
 R.T.: 9.416 min  
 Delta R.T.: -0.004 min  
 Response: 573299  
 Conc: 24.56 ng/ml

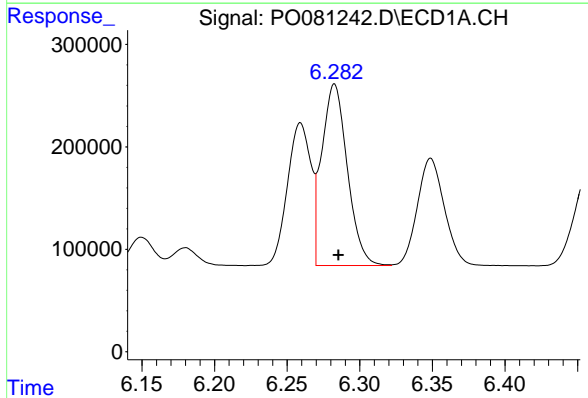


#3 AR-1016-1  
 R.T.: 6.259 min  
 Delta R.T.: -0.002 min  
 Response: 1563138  
 Conc: 551.20 ng/ml

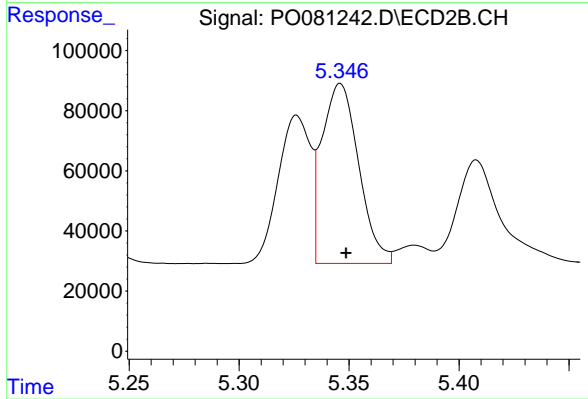
Instrument :  
 ECD\_O  
 ClientSampleId :  
 PB139112BS



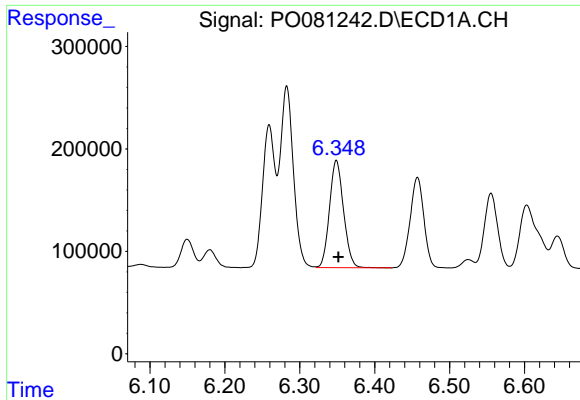
#3 AR-1016-1  
 R.T.: 5.326 min  
 Delta R.T.: -0.003 min  
 Response: 503176  
 Conc: 521.69 ng/ml



#4 AR-1016-2  
 R.T.: 6.283 min  
 Delta R.T.: -0.003 min  
 Response: 2174179  
 Conc: 544.90 ng/ml

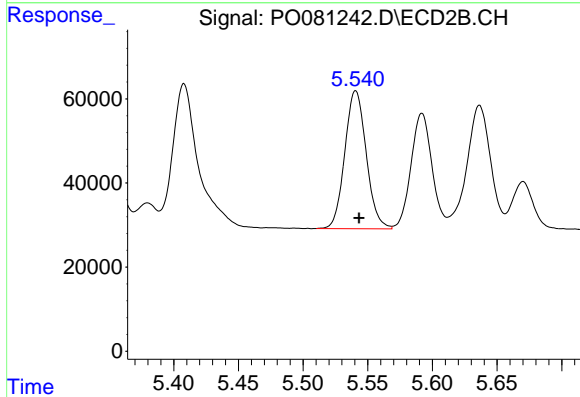


#4 AR-1016-2  
 R.T.: 5.346 min  
 Delta R.T.: -0.003 min  
 Response: 697357  
 Conc: 521.41 ng/ml

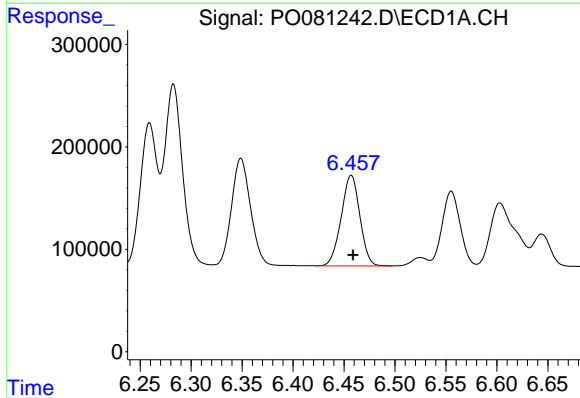


#5 AR-1016-3  
 R.T.: 6.349 min  
 Delta R.T.: -0.003 min  
 Response: 1363826  
 Conc: 538.94 ng/ml

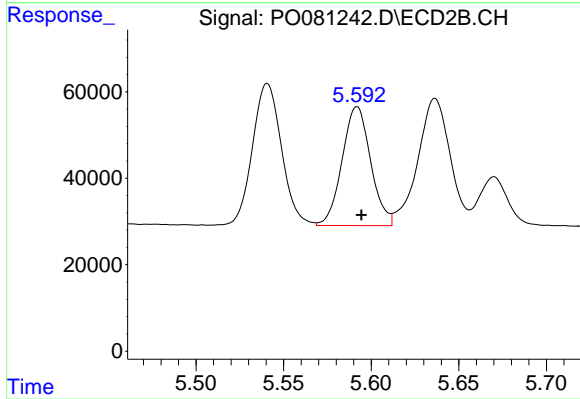
Instrument :  
 ECD\_O  
 ClientSampleId :  
 PB139112BS



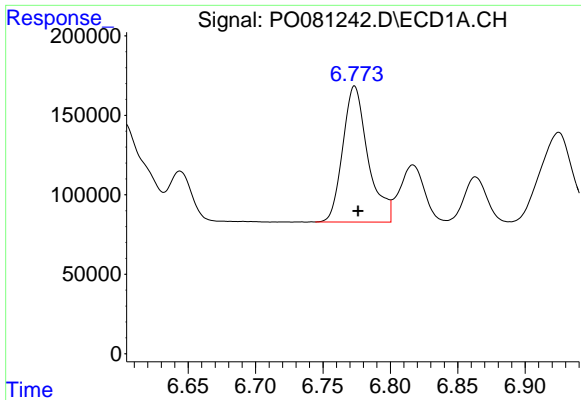
#5 AR-1016-3  
 R.T.: 5.541 min  
 Delta R.T.: -0.003 min  
 Response: 378799  
 Conc: 529.87 ng/ml



#6 AR-1016-4  
 R.T.: 6.457 min  
 Delta R.T.: -0.002 min  
 Response: 1128326  
 Conc: 532.57 ng/ml



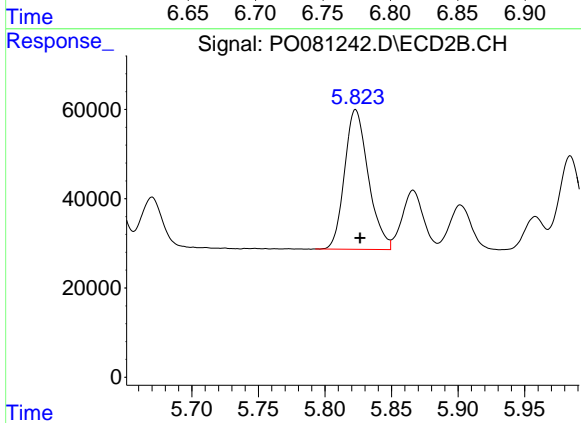
#6 AR-1016-4  
 R.T.: 5.592 min  
 Delta R.T.: -0.002 min  
 Response: 312388  
 Conc: 519.69 ng/ml



#7 AR-1016-5

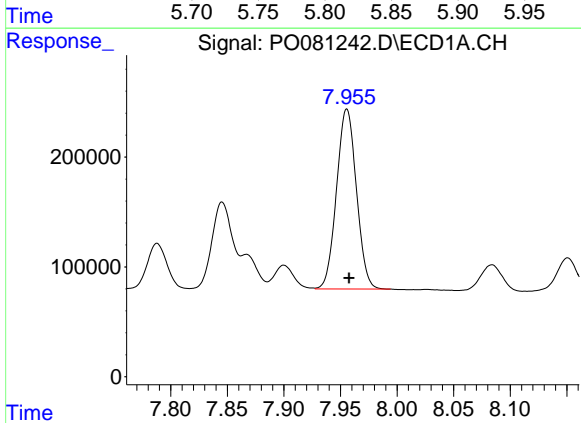
R.T.: 6.774 min  
 Delta R.T.: -0.002 min  
 Response: 1116423  
 Conc: 568.70 ng/ml

Instrument :  
 ECD\_O  
 ClientSampleId :  
 PB139112BS



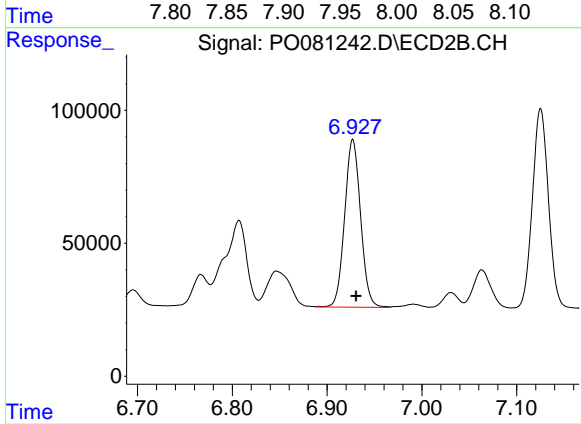
#7 AR-1016-5

R.T.: 5.823 min  
 Delta R.T.: -0.003 min  
 Response: 388768  
 Conc: 516.46 ng/ml



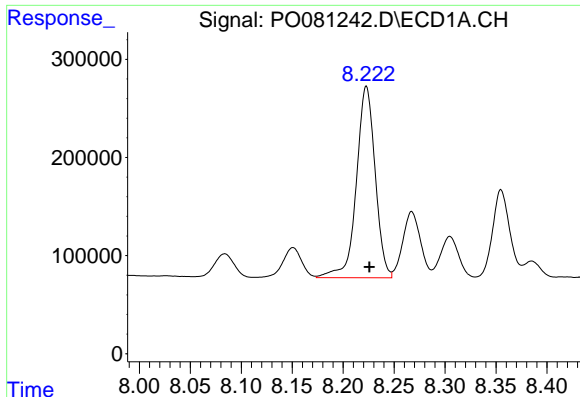
#31 AR-1260-1

R.T.: 7.956 min  
 Delta R.T.: -0.002 min  
 Response: 2006850  
 Conc: 577.34 ng/ml



#31 AR-1260-1

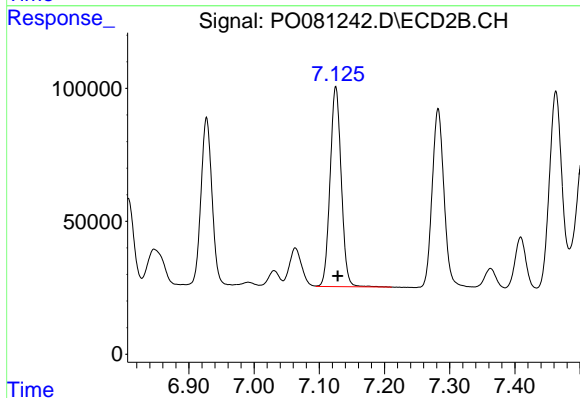
R.T.: 6.927 min  
 Delta R.T.: -0.003 min  
 Response: 737968  
 Conc: 502.84 ng/ml



#32 AR-1260-2

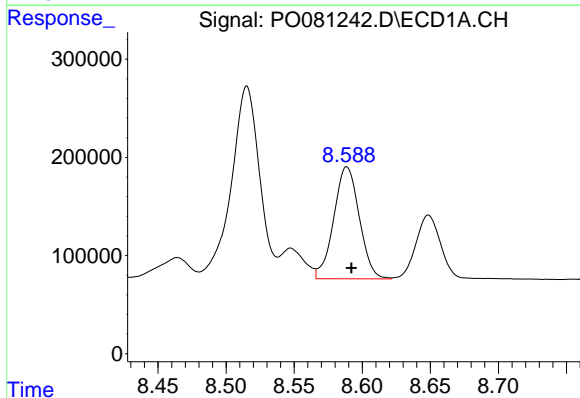
R.T.: 8.223 min  
 Delta R.T.: -0.003 min  
 Response: 2504764  
 Conc: 562.02 ng/ml

Instrument :  
 ECD\_O  
 ClientSampleId :  
 PB139112BS



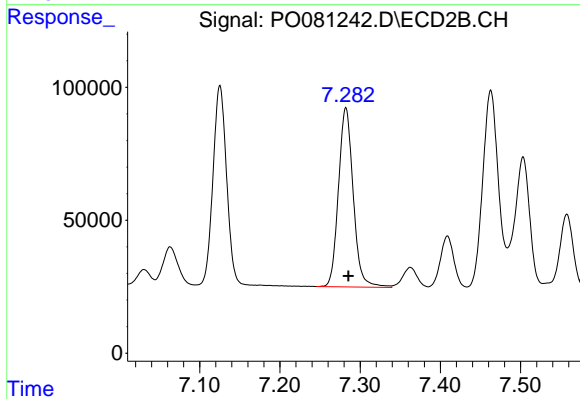
#32 AR-1260-2

R.T.: 7.125 min  
 Delta R.T.: -0.003 min  
 Response: 892078  
 Conc: 508.22 ng/ml



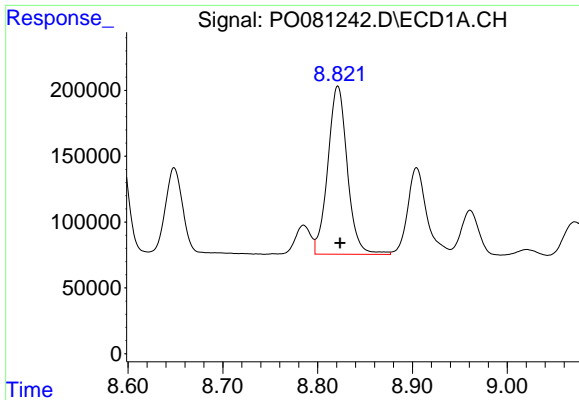
#33 AR-1260-3

R.T.: 8.589 min  
 Delta R.T.: -0.003 min  
 Response: 1493739  
 Conc: 569.22 ng/ml



#33 AR-1260-3

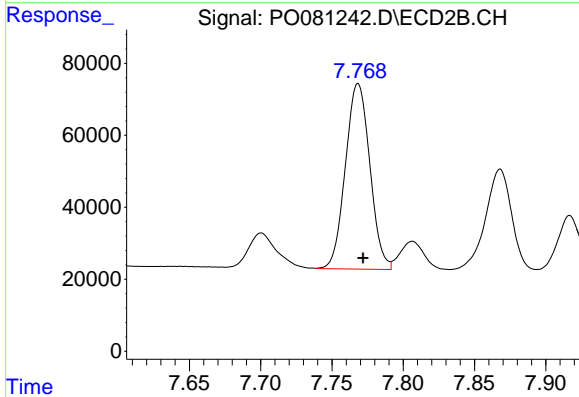
R.T.: 7.282 min  
 Delta R.T.: -0.003 min  
 Response: 861885  
 Conc: 470.80 ng/ml



#34 AR-1260-4

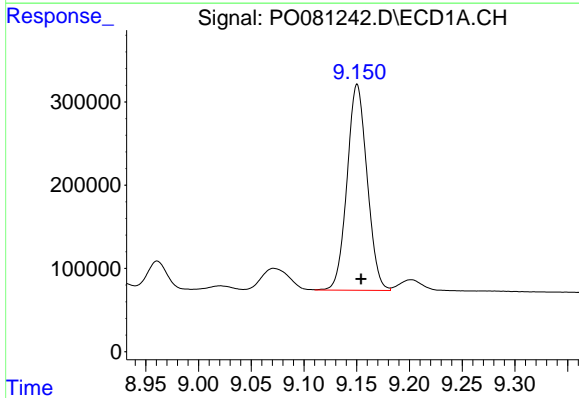
R.T.: 8.821 min  
 Delta R.T.: -0.002 min  
 Response: 1825863  
 Conc: 570.40 ng/ml

Instrument :  
 ECD\_O  
 ClientSampleId :  
 PB139112BS



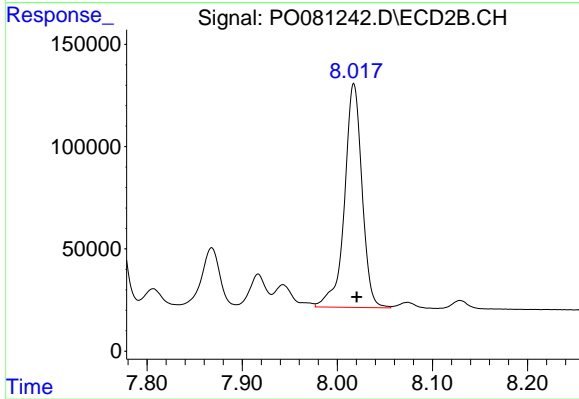
#34 AR-1260-4

R.T.: 7.768 min  
 Delta R.T.: -0.003 min  
 Response: 615759  
 Conc: 521.21 ng/ml



#35 AR-1260-5

R.T.: 9.150 min  
 Delta R.T.: -0.004 min  
 Response: 3267186  
 Conc: 545.75 ng/ml



#35 AR-1260-5

R.T.: 8.017 min  
 Delta R.T.: -0.003 min  
 Response: 1397587  
 Conc: 493.71 ng/ml