

Data Path : Z:\pestpcbsrv\HPCHEM1\ECD_0\Data\P0091521\
 Data File : P0081244.D
 Signal(s) : Signal #1: ECD1A.CH Signal #2: ECD2B.CH
 Acq On : 15 Sep 2021 17:15
 Operator : AJ\MA
 Sample : M3730-02
 Misc :
 ALS Vial : 23 Sample Multiplier: 1

Instrument :
 ECD_0
 ClientSampleId :
 WALLS

Integration File signal 1: autoint1.e
 Integration File signal 2: autoint2.e
 Quant Time: Sep 16 05:43:33 2021
 Quant Method : Z:\pestpcbsrv\HPCHEM1\ECD_0\methods\P0090221.M
 Quant Title : GC EXTRACTABLES
 QLast Update : Fri Sep 03 07:15:29 2021
 Response via : Initial Calibration
 Integrator: ChemStation 6890 Scale Mode: Small noise peaks clipped

Volume Inj. : 2 µl
 Signal #1 Phase : ZB-MR1 Signal #2 Phase: ZB-MR2
 Signal #1 Info : 30Mx0.32mmx 0.50µ Signal #2 Info : 30M x 0.32mm x 0.25µm

Compound	RT#1	RT#2	Resp#1	Resp#2	ng/ml	ng/ml

System Monitoring Compounds						
1) SA Tetrachlo...	4.927	4.054	1900406	606147	24.073	24.528
2) SA Decachlor...	10.994	9.415	1529571	587683	25.761	25.175

Target Compounds

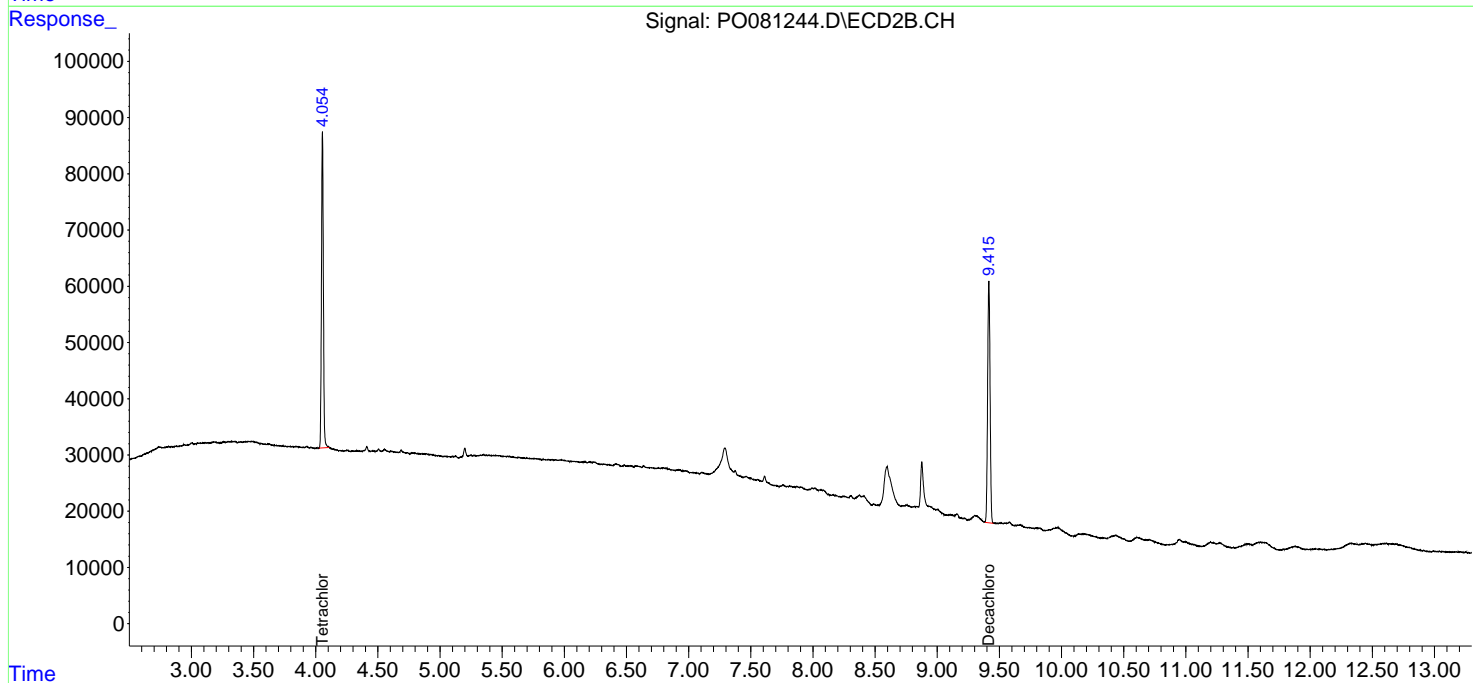
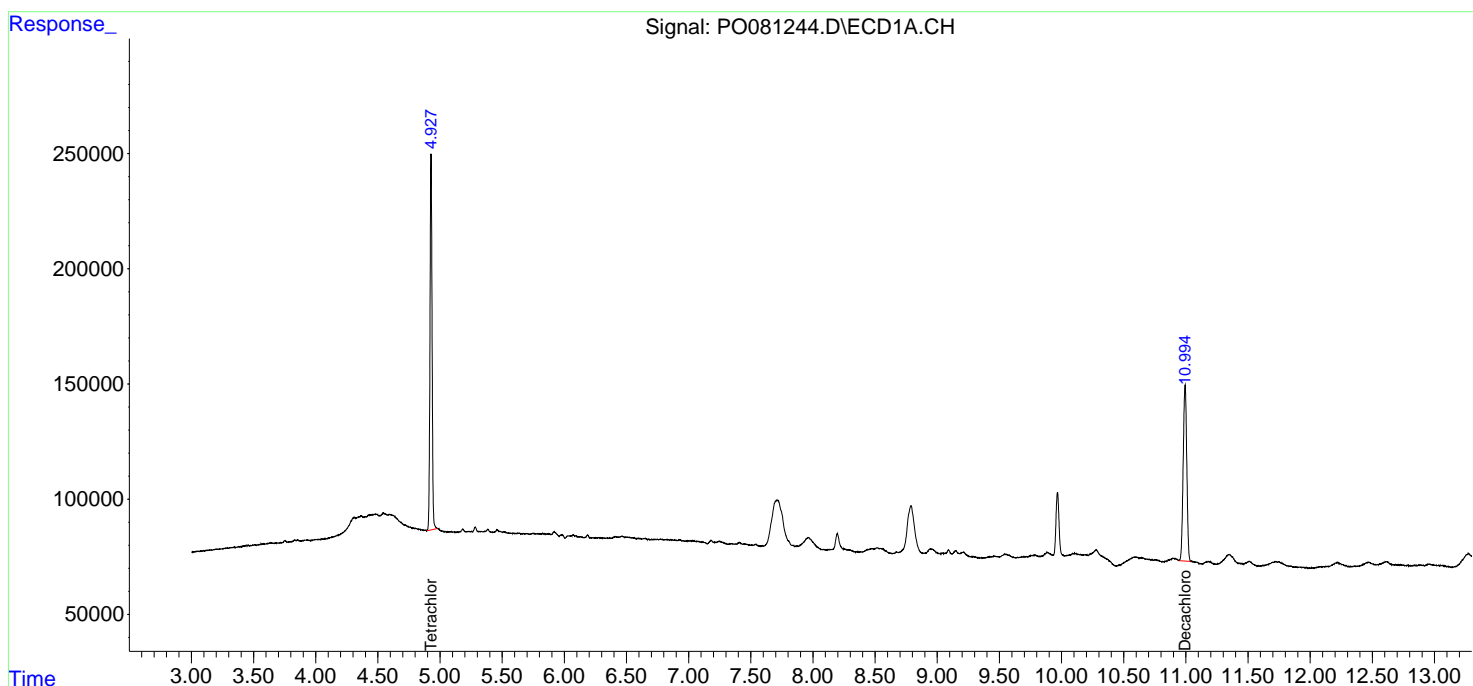
(f)=RT Delta > 1/2 Window (#)=Amounts differ by > 25% (m)=manual int.

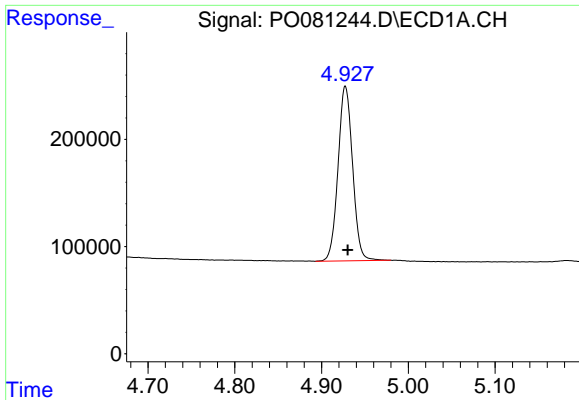
Data Path : Z:\pestpcbsrv\HPCHEM1\ECD_0\Data\P0091521\
 Data File : P0081244.D
 Signal(s) : Signal #1: ECD1A.CH Signal #2: ECD2B.CH
 Acq On : 15 Sep 2021 17:15
 Operator : AJ\MA
 Sample : M3730-02
 Misc :
 ALS Vial : 23 Sample Multiplier: 1

Instrument :
 ECD_O
 ClientSampled :
 WALLS

Integration File signal 1: autoint1.e
 Integration File signal 2: autoint2.e
 Quant Time: Sep 16 05:43:33 2021
 Quant Method : Z:\pestpcbsrv\HPCHEM1\ECD_0\methods\P0090221.M
 Quant Title : GC EXTRACTABLES
 QLast Update : Fri Sep 03 07:15:29 2021
 Response via : Initial Calibration
 Integrator: ChemStation 6890 Scale Mode: Small noise peaks clipped

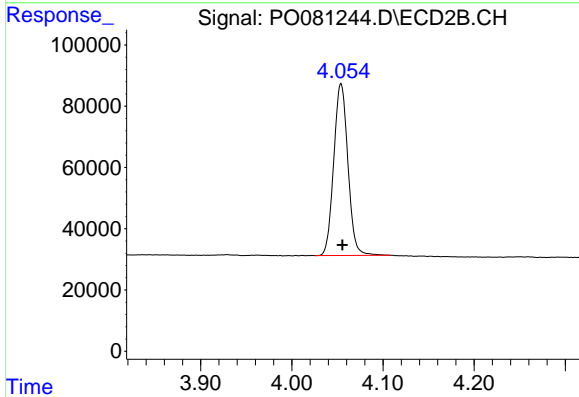
Volume Inj. : 2 µl
 Signal #1 Phase : ZB-MR1 Signal #2 Phase: ZB-MR2
 Signal #1 Info : 30Mx0.32mmx 0.50µ Signal #2 Info : 30M x 0.32mm x 0.25µm



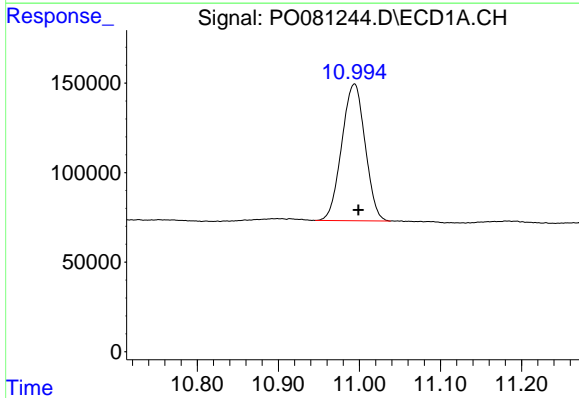


#1 Tetrachloro-m-xylene
 R.T.: 4.927 min
 Delta R.T.: -0.003 min
 Response: 1900406
 Conc: 24.07 ng/ml

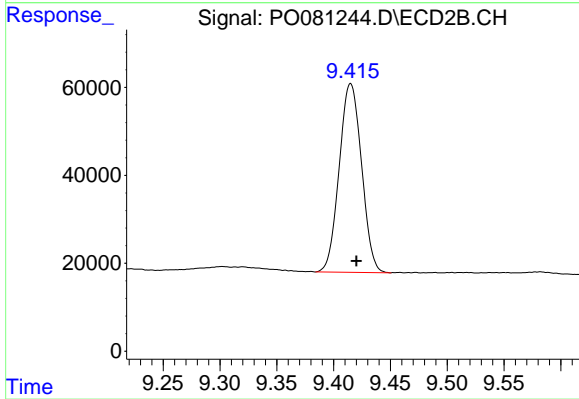
Instrument :
 ECD_O
 ClientSampled :
 WALLS



#1 Tetrachloro-m-xylene
 R.T.: 4.054 min
 Delta R.T.: -0.001 min
 Response: 606147
 Conc: 24.53 ng/ml



#2 Decachlorobiphenyl
 R.T.: 10.994 min
 Delta R.T.: -0.005 min
 Response: 1529571
 Conc: 25.76 ng/ml



#2 Decachlorobiphenyl
 R.T.: 9.415 min
 Delta R.T.: -0.005 min
 Response: 587683
 Conc: 25.17 ng/ml