

Data Path : Z:\pestpcbsrv\HPCHEM1\ECD_0\Data\P0091522\
 Data File : P0089552.D
 Signal(s) : Signal #1: ECD1A.ch Signal #2: ECD2B.ch
 Acq On : 15 Sep 2022 15:37
 Operator : YP/AJ
 Sample : AR1221ICC500
 Misc :
 ALS Vial : 8 Sample Multiplier: 1

Instrument :
 ECD_0
 ClientSampleId :
 AR1221ICC500

Integration File signal 1: autoint1.e
 Integration File signal 2: autoint2.e
 Quant Time: Sep 15 16:14:46 2022
 Quant Method : Z:\pestpcbsrv\HPCHEM1\ECD_0\methods\P0091522.M
 Quant Title : GC EXTRACTABLES
 QLast Update : Thu Sep 15 16:12:43 2022
 Response via : Initial Calibration
 Integrator: ChemStation

Volume Inj. : 2 µl
 Signal #1 Phase : ZB-MR1 Signal #2 Phase: ZB-MR2
 Signal #1 Info : 30Mx0.32mmx 0.50µ Signal #2 Info : 30M x 0.32mm x 0.25µm

Compound	RT#1	RT#2	Resp#1	Resp#2	ng/ml	ng/ml

System Monitoring Compounds						
1) SA Tetrachlo...	4.477	3.663	207.7E6	89894654	50.000	50.000
2) SA Decachlor...	10.360	8.777	129.4E6	56437055	50.000	50.000
Target Compounds						
8) L2 AR-1221-1	4.686	3.882	21470227	9969566	500.000	500.000
9) L2 AR-1221-2	4.773	3.969	16105849	7490562	500.000	500.000
10) L2 AR-1221-3	4.851	4.047	50635957	22940918	500.000	500.000

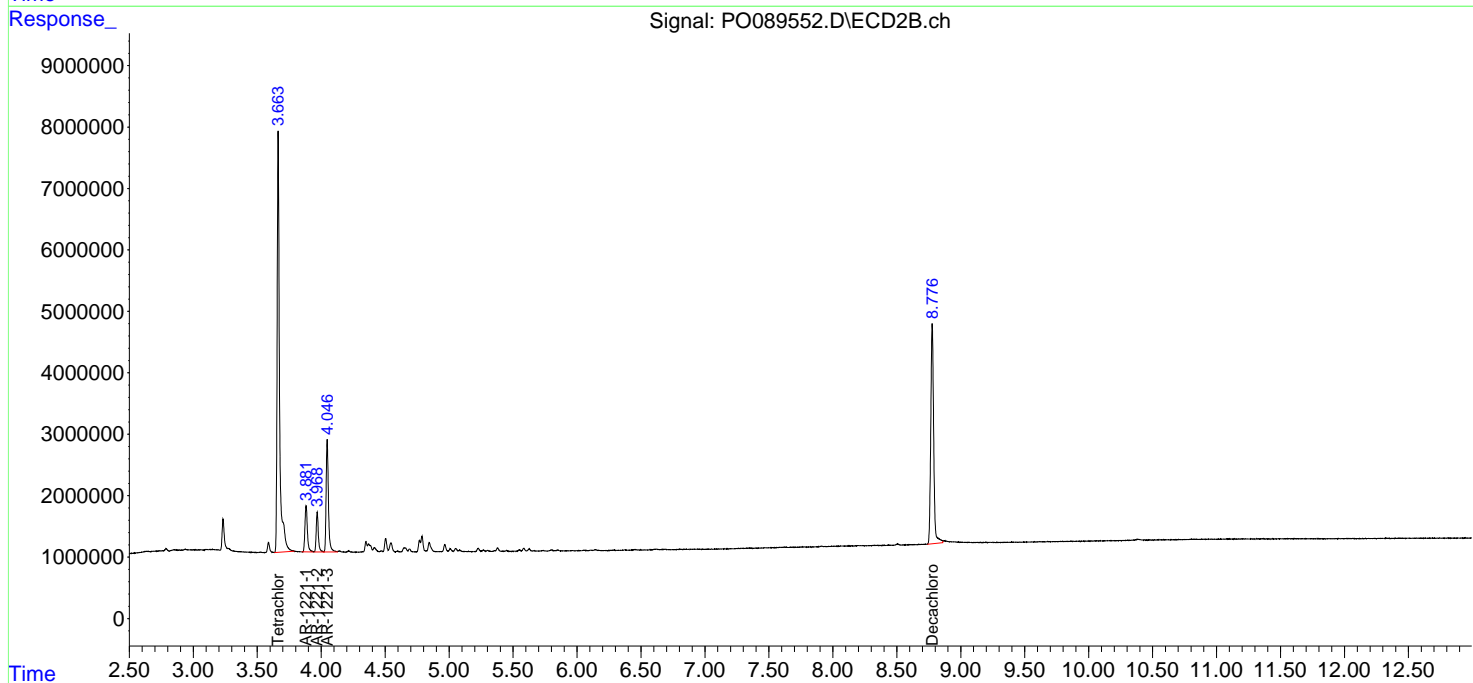
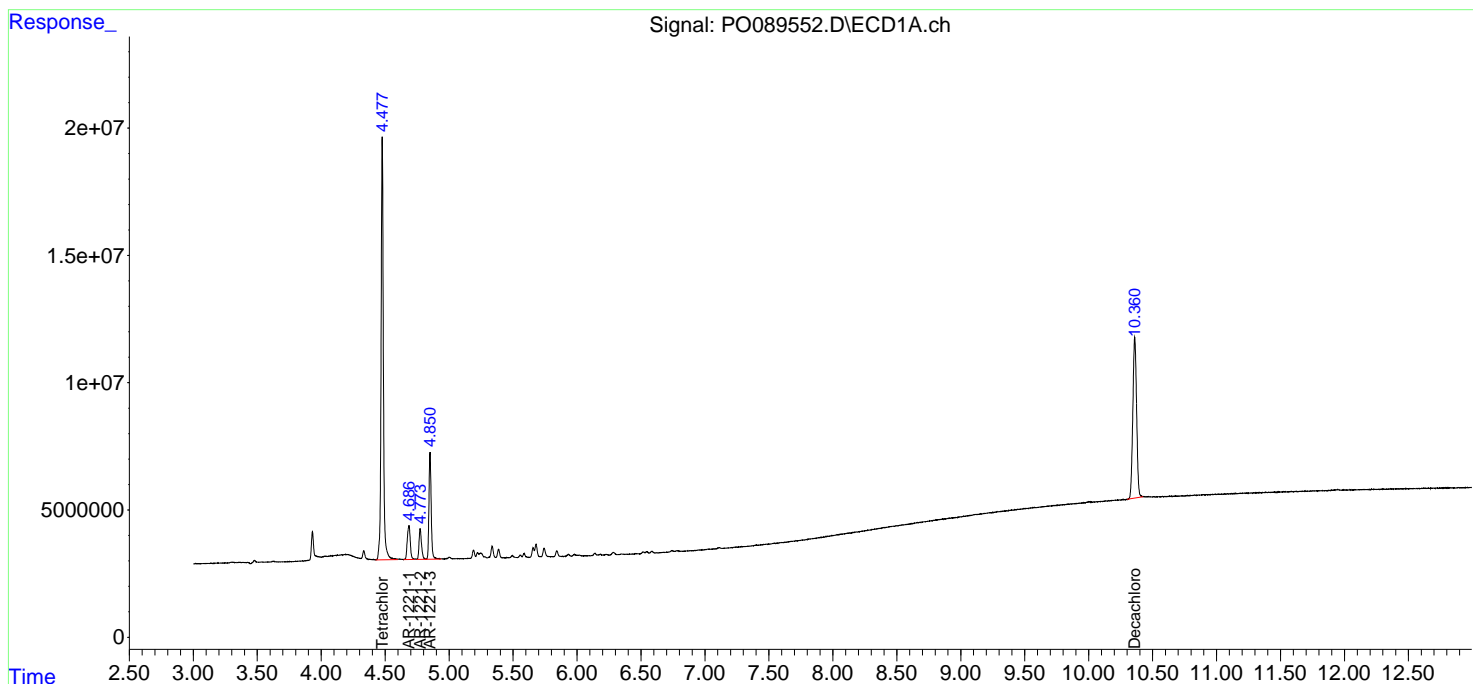
(f)=RT Delta > 1/2 Window (#)=Amounts differ by > 25% (m)=manual int.

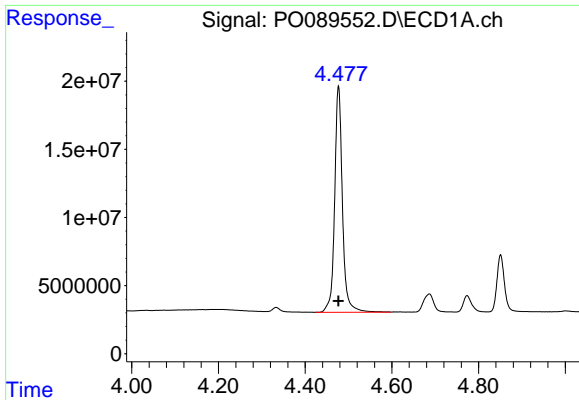
Data Path : Z:\pestpcbsrv\HPCHEM1\ECD_O\Data\P0091522\
 Data File : P0089552.D
 Signal(s) : Signal #1: ECD1A.ch Signal #2: ECD2B.ch
 Acq On : 15 Sep 2022 15:37
 Operator : YP/AJ
 Sample : AR1221ICC500
 Misc :
 ALS Vial : 8 Sample Multiplier: 1

Instrument :
 ECD_O
 ClientSampleId :
 AR1221ICC500

Integration File signal 1: autoint1.e
 Integration File signal 2: autoint2.e
 Quant Time: Sep 15 16:14:46 2022
 Quant Method : Z:\pestpcbsrv\HPCHEM1\ECD_O\methods\P0091522.M
 Quant Title : GC EXTRACTABLES
 QLast Update : Thu Sep 15 16:12:43 2022
 Response via : Initial Calibration
 Integrator: ChemStation

Volume Inj. : 2 µl
 Signal #1 Phase : ZB-MR1 Signal #2 Phase: ZB-MR2
 Signal #1 Info : 30Mx0.32mmx 0.50µ Signal #2 Info : 30M x 0.32mm x 0.25µm

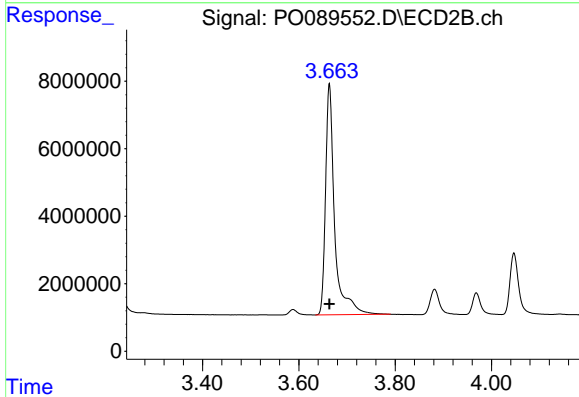




#1 Tetrachloro-m-xylene

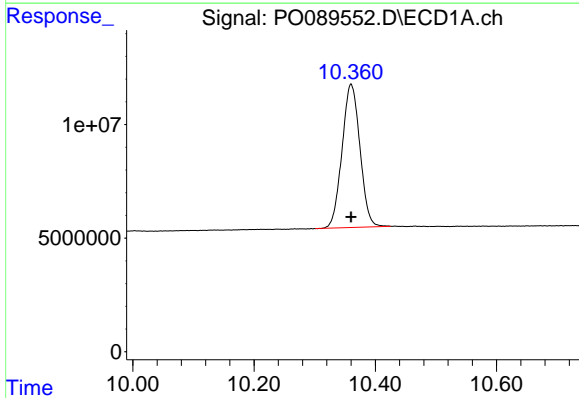
R.T.: 4.477 min
 Delta R.T.: 0.000 min
 Response: 207691247
 Conc: 50.00 ng/ml

Instrument :
 ECD_O
 ClientSampleId :
 AR1221ICC500



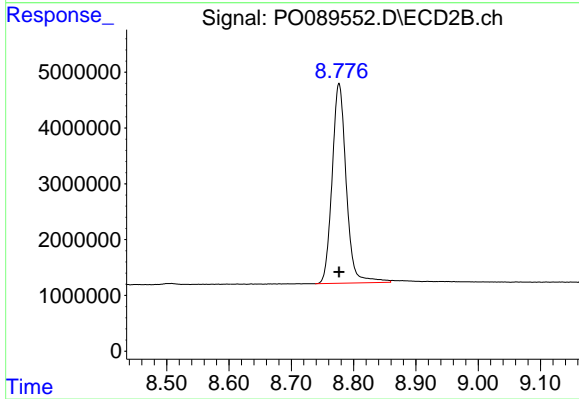
#1 Tetrachloro-m-xylene

R.T.: 3.663 min
 Delta R.T.: 0.000 min
 Response: 89894654
 Conc: 50.00 ng/ml



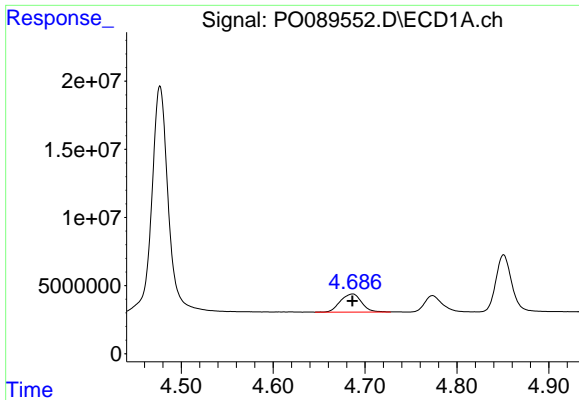
#2 Decachlorobiphenyl

R.T.: 10.360 min
 Delta R.T.: 0.000 min
 Response: 129364587
 Conc: 50.00 ng/ml



#2 Decachlorobiphenyl

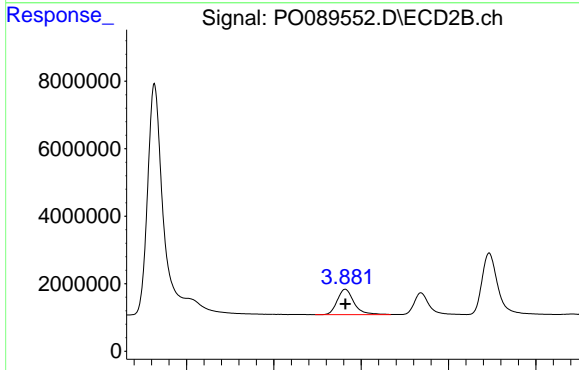
R.T.: 8.777 min
 Delta R.T.: 0.000 min
 Response: 56437055
 Conc: 50.00 ng/ml



#8 AR-1221-1

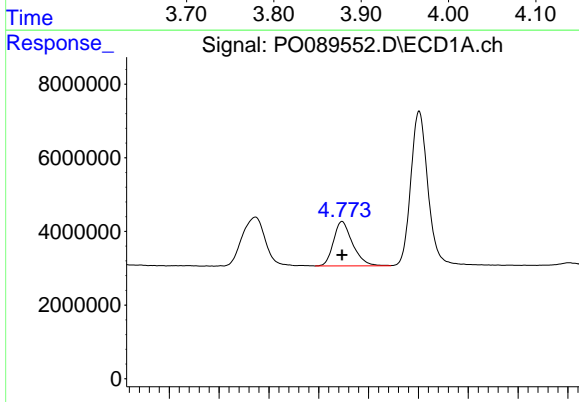
R.T.: 4.686 min
 Delta R.T.: 0.000 min
 Response: 21470227
 Conc: 500.00 ng/ml

Instrument :
 ECD_O
 ClientSampleId :
 AR1221ICC500



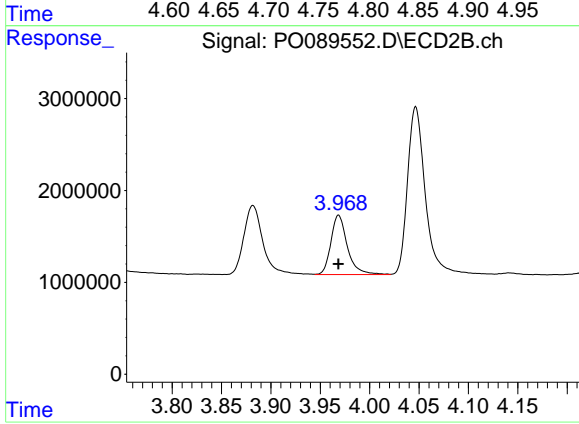
#8 AR-1221-1

R.T.: 3.882 min
 Delta R.T.: 0.000 min
 Response: 9969566
 Conc: 500.00 ng/ml



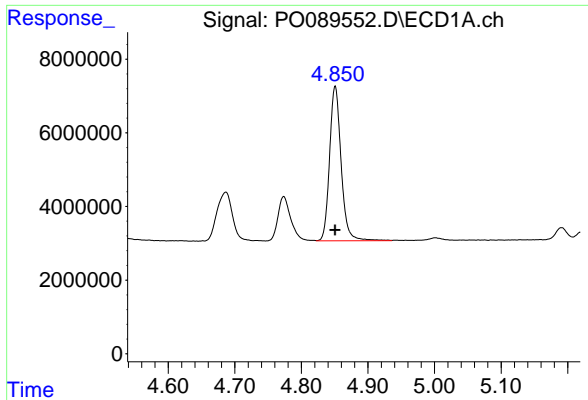
#9 AR-1221-2

R.T.: 4.773 min
 Delta R.T.: 0.000 min
 Response: 16105849
 Conc: 500.00 ng/ml



#9 AR-1221-2

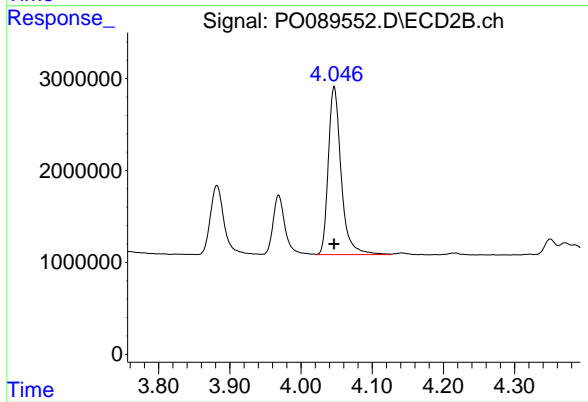
R.T.: 3.969 min
 Delta R.T.: 0.000 min
 Response: 7490562
 Conc: 500.00 ng/ml



#10 AR-1221-3

R.T.: 4.851 min
Delta R.T.: 0.000 min
Response: 50635957
Conc: 500.00 ng/ml

Instrument :
ECD_O
ClientSampleId :
AR1221ICC500



#10 AR-1221-3

R.T.: 4.047 min
Delta R.T.: 0.000 min
Response: 22940918
Conc: 500.00 ng/ml