

Data Path : Z:\pestpcbsrv\HPCHEM1\ECD\_0\Data\P0091619\  
 Data File : P0060974.D  
 Signal(s) : Signal #1: ECD1A.CH Signal #2: ECD2B.CH  
 Acq On : 17 Sep 2019 2:06  
 Operator : SM/AJ  
 Sample : K4918-10  
 Misc :  
 ALS Vial : 49 Sample Multiplier: 1

Instrument :  
 ECD\_0  
 ClientSampleId :  
 SB-11

Integration File signal 1: autoint1.e  
 Integration File signal 2: autoint2.e  
 Quant Time: Sep 17 02:37:11 2019  
 Quant Method : Z:\pestpcbsrv\HPCHEM1\ECD\_0\methods\P0091319.M  
 Quant Title : GC EXTRACTABLES  
 QLast Update : Sat Sep 14 00:06:36 2019  
 Response via : Initial Calibration  
 Integrator: ChemStation 6890 Scale Mode: Small noise peaks clipped

Volume Inj. : 2 µl  
 Signal #1 Phase : ZB-MR1 Signal #2 Phase: ZB-MR2  
 Signal #1 Info : 30Mx0.32mmx 0.50µ Signal #2 Info : 30M x 0.32mm x 0.25µm

Compound	RT#1	RT#2	Resp#1	Resp#2	ng/ml	ng/ml
----------	------	------	--------	--------	-------	-------

-----  
 System Monitoring Compounds

1) SA Tetrachlo...	4.366	3.529	795865	635709	21.632	22.767
2) SA Decachlor...	10.027	8.408	669426	508088	14.570	14.495

Target Compounds  
 -----

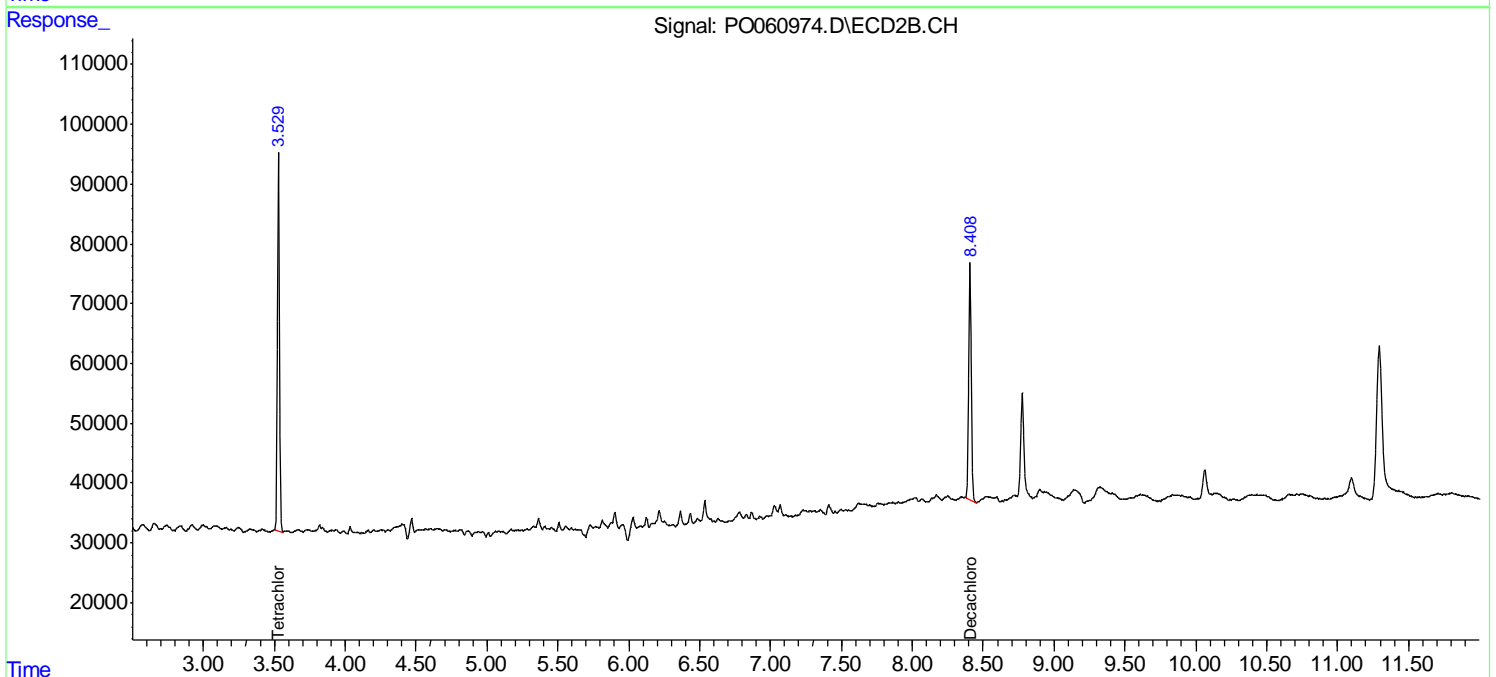
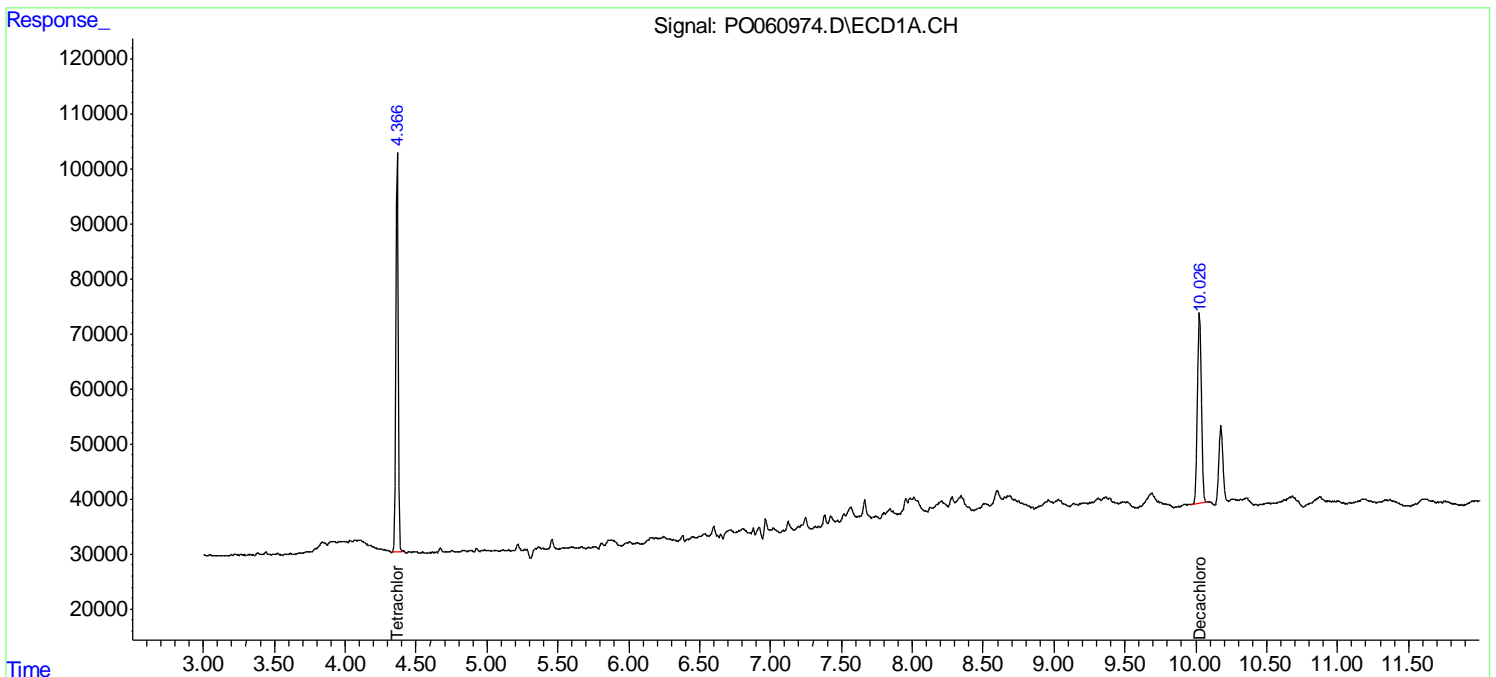
(f)=RT Delta > 1/2 Window (#)=Amounts differ by > 25% (m)=manual int.

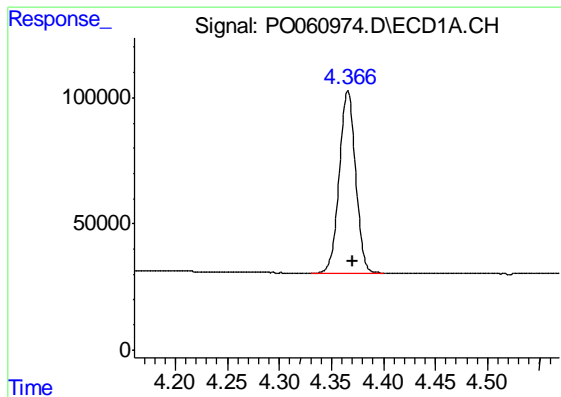
Data Path : Z:\pestpcbsrv\HPCHEM1\ECD\_O\Data\P0091619\  
 Data File : P0060974.D  
 Signal(s) : Signal #1: ECD1A.CH Signal #2: ECD2B.CH  
 Acq On : 17 Sep 2019 2:06  
 Operator : SM/AJ  
 Sample : K4918-10  
 Misc :  
 ALS Vial : 49 Sample Multiplier: 1

Instrument :  
 ECD\_O  
 ClientSampled :  
 SB-11

Integration File signal 1: autoint1.e  
 Integration File signal 2: autoint2.e  
 Quant Time: Sep 17 02:37:11 2019  
 Quant Method : Z:\pestpcbsrv\HPCHEM1\ECD\_O\methods\P0091319.M  
 Quant Title : GC EXTRACTABLES  
 QLast Update : Sat Sep 14 00:06:36 2019  
 Response via : Initial Calibration  
 Integrator: ChemStation 6890 Scale Mode: Small noise peaks clipped

Volume Inj. : 2 µl  
 Signal #1 Phase : ZB-MR1 Signal #2 Phase: ZB-MR2  
 Signal #1 Info : 30Mx0.32mmx 0.50µ Signal #2 Info : 30M x 0.32mm x 0.25µm

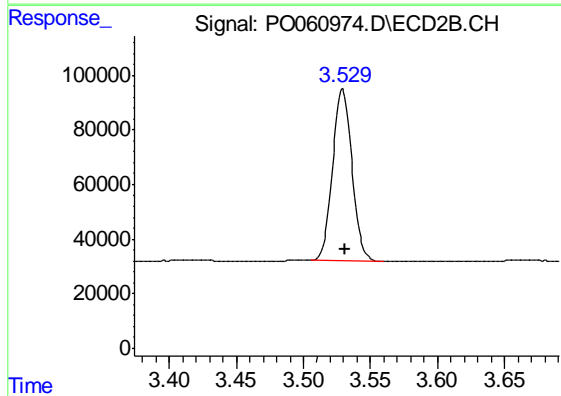




#1 Tetrachloro-m-xylene

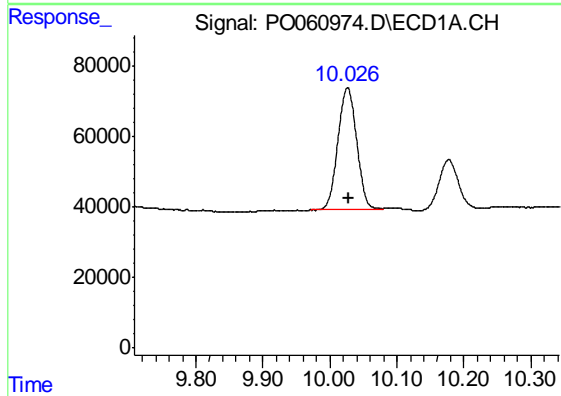
R.T.: 4.366 min  
 Delta R.T.: -0.004 min  
 Response: 795865  
 Conc: 21.63 ng/ml

Instrument :  
 ECD\_O  
 ClientSampleId :  
 SB-11



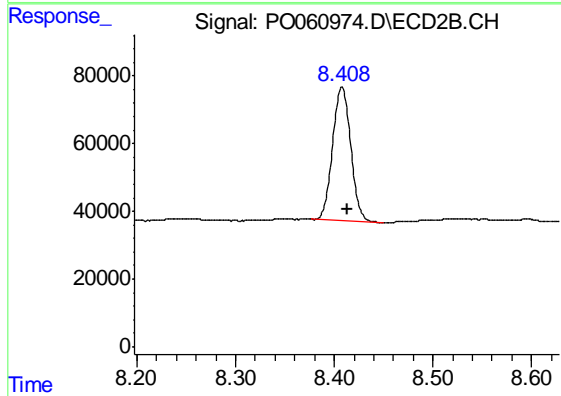
#1 Tetrachloro-m-xylene

R.T.: 3.529 min  
 Delta R.T.: -0.002 min  
 Response: 635709  
 Conc: 22.77 ng/ml



#2 Decachlorobiphenyl

R.T.: 10.027 min  
 Delta R.T.: 0.000 min  
 Response: 669426  
 Conc: 14.57 ng/ml



#2 Decachlorobiphenyl

R.T.: 8.408 min  
 Delta R.T.: -0.005 min  
 Response: 508088  
 Conc: 14.50 ng/ml