

Data Path : Z:\pestpcbsrv\HPCHEM1\ECD_0\Data\P0091620\
 Data File : P0071389.D
 Signal(s) : Signal #1: ECD1A.CH Signal #2: ECD2B.CH
 Acq On : 16 Sep 2020 16:27
 Operator : DD\AJ
 Sample : I.BLK
 Misc :
 ALS Vial : 2 Sample Multiplier: 1

Instrument :
 ECD_0
 ClientSampleId :
 I.BLK

Integration File signal 1: autoint1.e
 Integration File signal 2: autoint2.e
 Quant Time: Sep 16 17:50:14 2020
 Quant Method : Z:\pestpcbsrv\HPCHEM1\ECD_0\methods\P0090920.M
 Quant Title : GC EXTRACTABLES
 QLast Update : Wed Sep 09 16:04:54 2020
 Response via : Initial Calibration
 Integrator: ChemStation 6890 Scale Mode: Small noise peaks clipped

Volume Inj. : 2 µl
 Signal #1 Phase : ZB-MR1 Signal #2 Phase: ZB-MR2
 Signal #1 Info : 30Mx0.32mmx 0.50µ Signal #2 Info : 30M x 0.32mm x 0.25µm

Compound	RT#1	RT#2	Resp#1	Resp#2	ng/ml	ng/ml

System Monitoring Compounds						
1) SA Tetrachlo...	4.343	3.527	1486443	773024	20.975	19.800
2) SA Decachlor...	9.957	8.707	1899900	1065792	20.373	19.348

Target Compounds

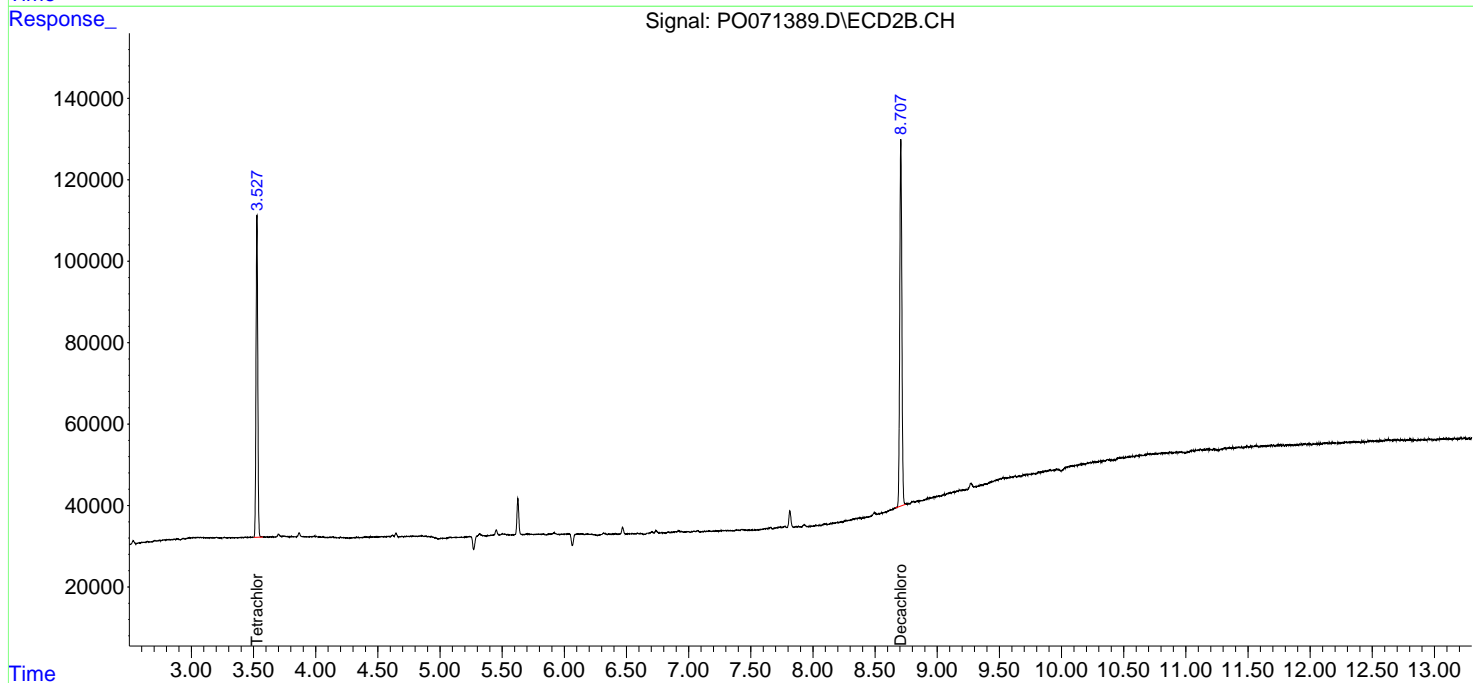
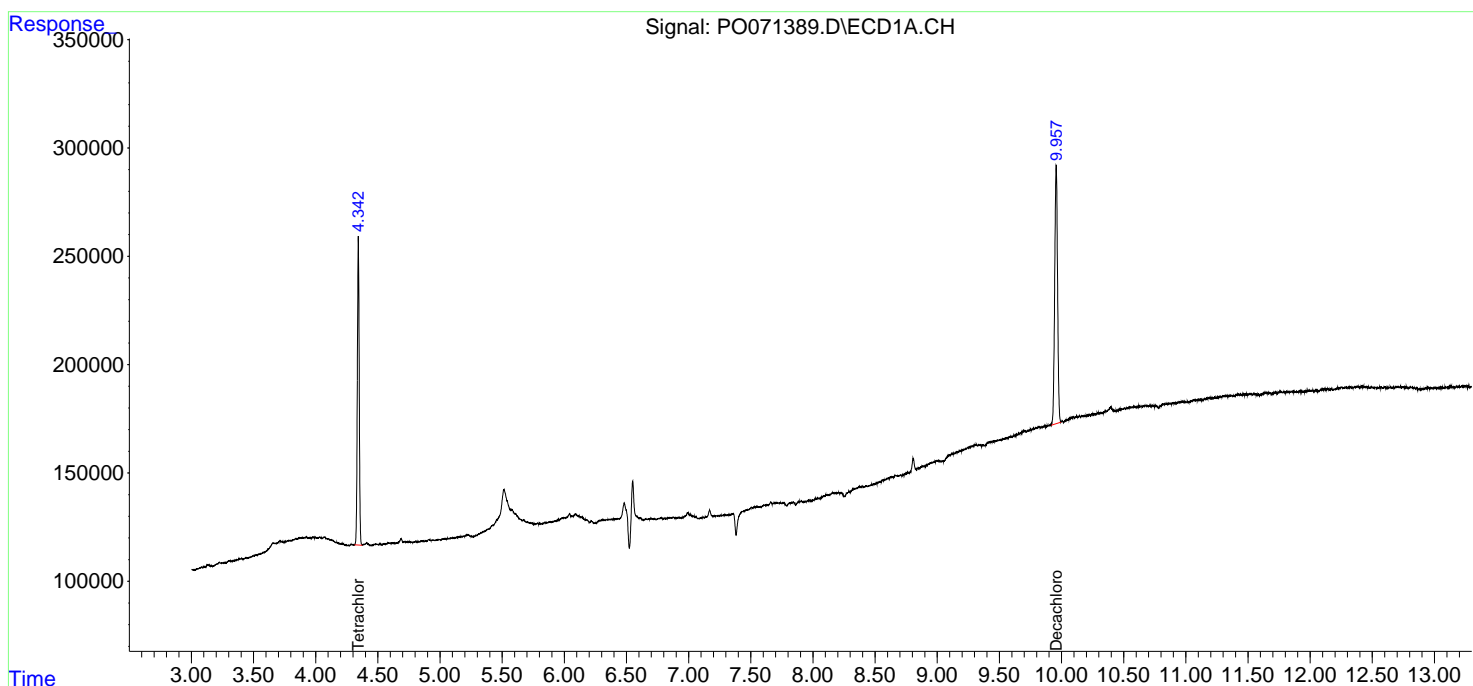
(f)=RT Delta > 1/2 Window (#)=Amounts differ by > 25% (m)=manual int.

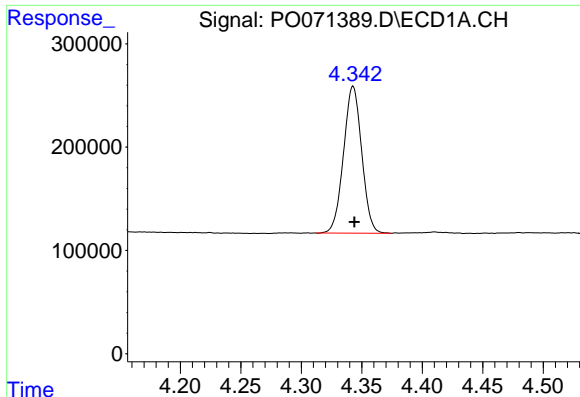
Data Path : Z:\pestpcbsrv\HPCHEM1\ECD_O\Data\P0091620\
 Data File : P0071389.D
 Signal(s) : Signal #1: ECD1A.CH Signal #2: ECD2B.CH
 Acq On : 16 Sep 2020 16:27
 Operator : DD\AJ
 Sample : I.BLK
 Misc :
 ALS Vial : 2 Sample Multiplier: 1

Instrument :
 ECD_O
 ClientSampleId :
 I.BLK

Integration File signal 1: autoint1.e
 Integration File signal 2: autoint2.e
 Quant Time: Sep 16 17:50:14 2020
 Quant Method : Z:\pestpcbsrv\HPCHEM1\ECD_O\methods\P0090920.M
 Quant Title : GC EXTRACTABLES
 QLast Update : Wed Sep 09 16:04:54 2020
 Response via : Initial Calibration
 Integrator: ChemStation 6890 Scale Mode: Small noise peaks clipped

Volume Inj. : 2 µl
 Signal #1 Phase : ZB-MR1 Signal #2 Phase: ZB-MR2
 Signal #1 Info : 30Mx0.32mmx 0.50µ Signal #2 Info : 30M x 0.32mm x 0.25µm

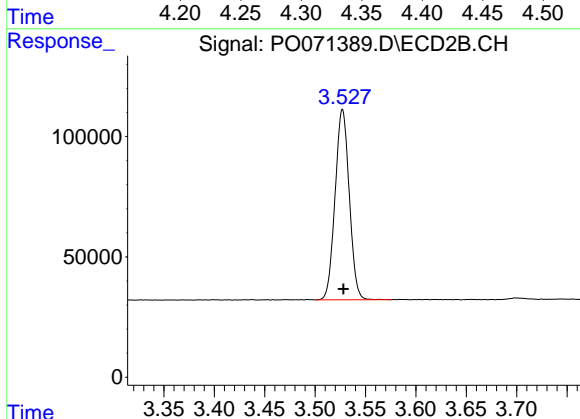




#1 Tetrachloro-m-xylene

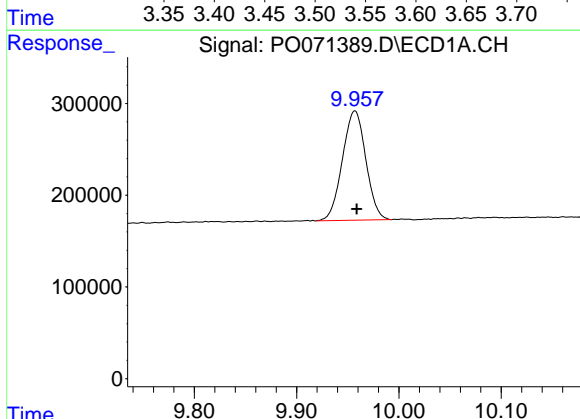
R.T.: 4.343 min
 Delta R.T.: -0.001 min
 Response: 1486443
 Conc: 20.98 ng/ml

Instrument :
 ECD_O
 ClientSampled :
 I.BLK



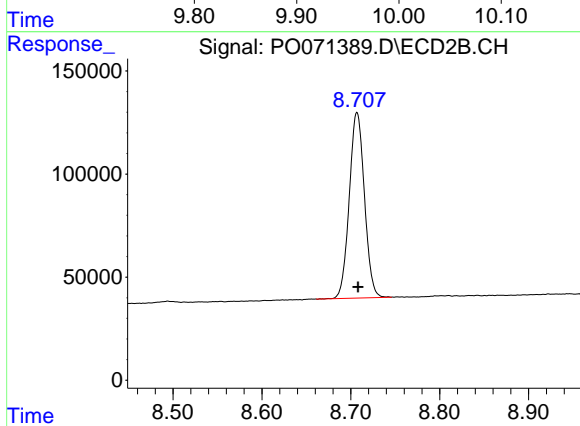
#1 Tetrachloro-m-xylene

R.T.: 3.527 min
 Delta R.T.: 0.000 min
 Response: 773024
 Conc: 19.80 ng/ml



#2 Decachlorobiphenyl

R.T.: 9.957 min
 Delta R.T.: -0.002 min
 Response: 1899900
 Conc: 20.37 ng/ml



#2 Decachlorobiphenyl

R.T.: 8.707 min
 Delta R.T.: -0.001 min
 Response: 1065792
 Conc: 19.35 ng/ml