

Data Path : Z:\pestpcbsrv\HPCHEM1\ECD\_0\Data\P0091621\  
 Data File : P0081297.D  
 Signal(s) : Signal #1: ECD1A.CH Signal #2: ECD2B.CH  
 Acq On : 16 Sep 2021 13:07  
 Operator : AJ\MA  
 Sample : PB139130BSD  
 Misc :  
 ALS Vial : 10 Sample Multiplier: 1

Instrument :  
 ECD\_0  
 ClientSampleId :  
 PB139130BSD

Integration File signal 1: autoint1.e  
 Integration File signal 2: autoint2.e  
 Quant Time: Sep 17 01:26:25 2021  
 Quant Method : Z:\pestpcbsrv\HPCHEM1\ECD\_0\methods\P0090221.M  
 Quant Title : GC EXTRACTABLES  
 QLast Update : Fri Sep 03 07:15:29 2021  
 Response via : Initial Calibration  
 Integrator: ChemStation 6890 Scale Mode: Small noise peaks clipped

Volume Inj. : 2 µl  
 Signal #1 Phase : ZB-MR1 Signal #2 Phase: ZB-MR2  
 Signal #1 Info : 30Mx0.32mmx 0.50µ Signal #2 Info : 30M x 0.32mm x 0.25µm

Compound	RT#1	RT#2	Resp#1	Resp#2	ng/ml	ng/ml
-----						
System Monitoring Compounds						
1) SA Tetrachlo...	4.925	4.051	1571679	466574	19.909	18.880
2) SA Decachlor...	10.985	9.410	1246392	511162	20.992	21.897
Target Compounds						
3) L1 AR-1016-1	6.256	5.323	1361780	447068	480.196	463.514
4) L1 AR-1016-2	6.280	5.343	1936310	626454	485.287	468.394
5) L1 AR-1016-3	6.346	5.538	1191045	333079	470.664	465.912
6) L1 AR-1016-4	6.454	5.589	980588	277192	462.842	461.135
7) L1 AR-1016-5	6.770	5.821	965936	346054	492.046	459.714
31) L7 AR-1260-1	7.952	6.924	1749117	667816	503.192	455.042
32) L7 AR-1260-2	8.218	7.122	2106610	804384	472.685	458.260
33) L7 AR-1260-3	8.586	7.279	1250926	759165	476.689	414.690
34) L7 AR-1260-4	8.817	7.765	1530071	547407	477.992	463.358
35) L7 AR-1260-5	9.146	8.014	2806531	1251703	468.799	442.179
-----						

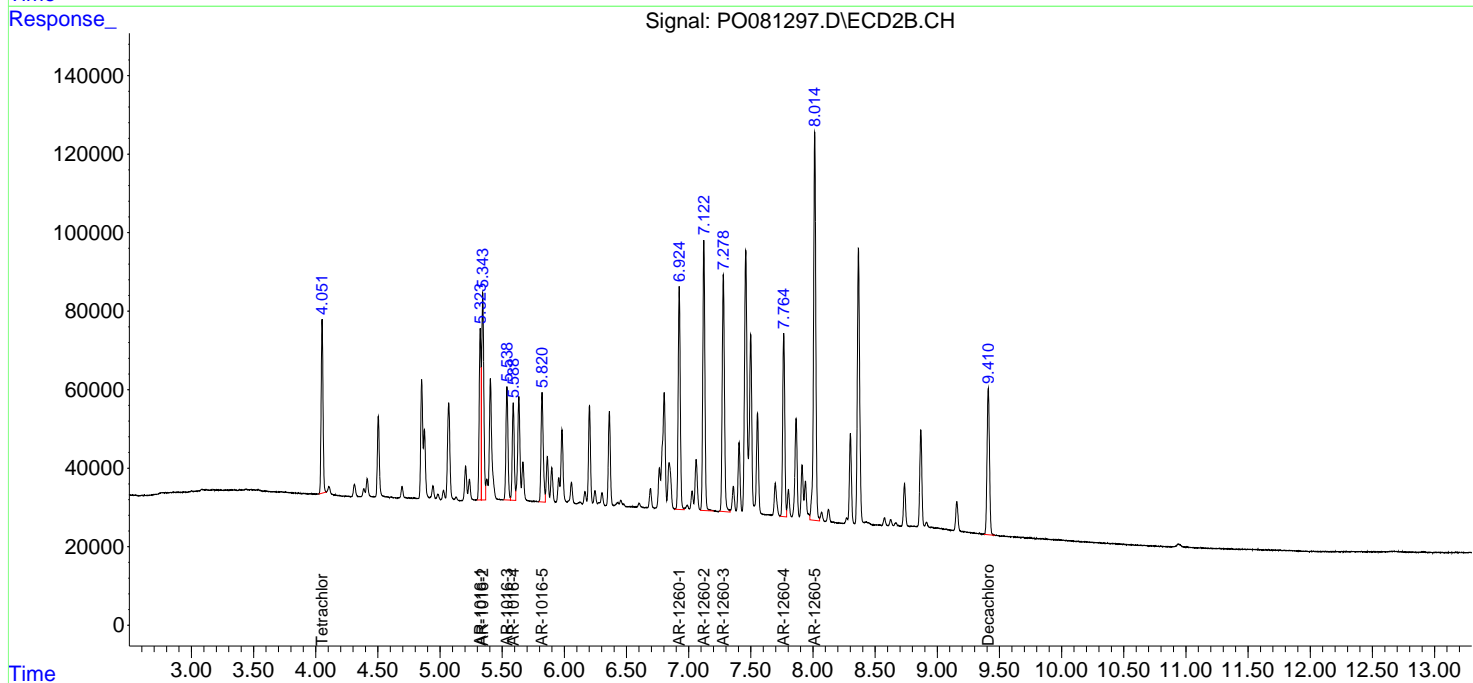
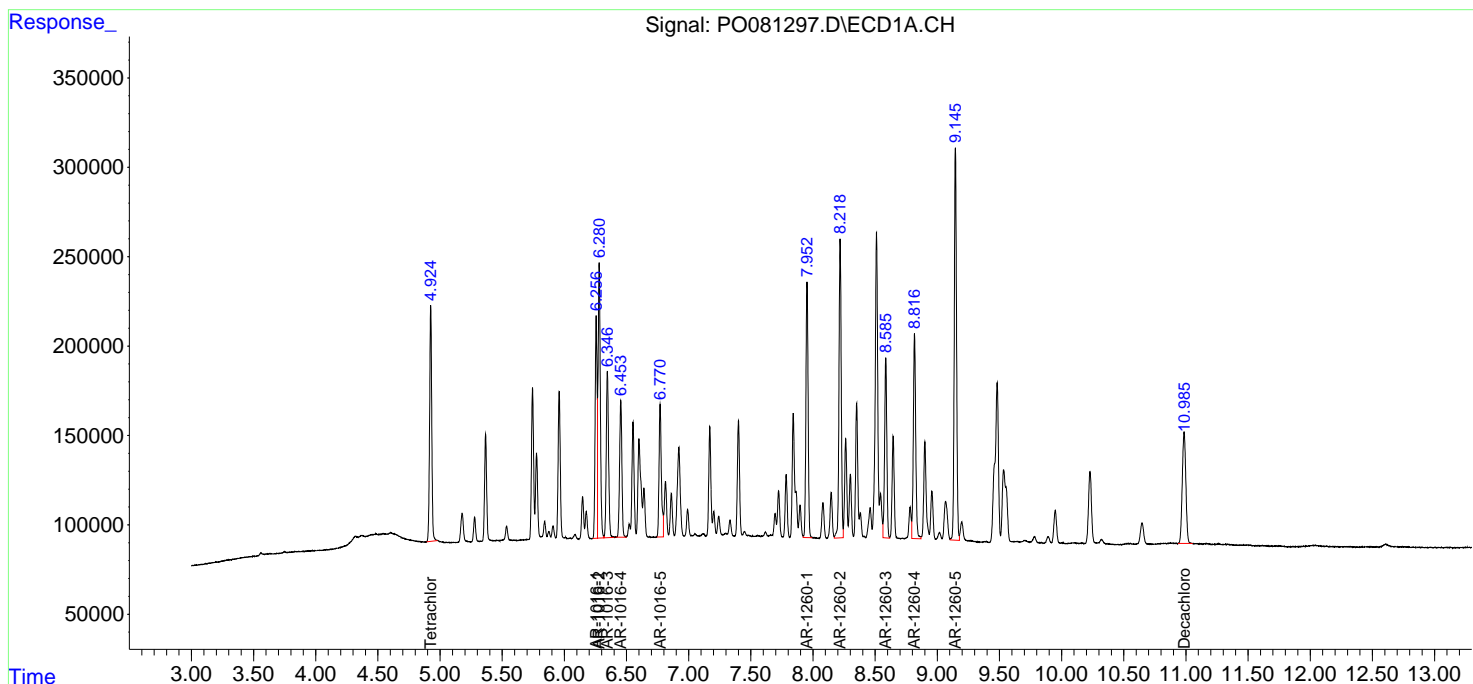
(f)=RT Delta > 1/2 Window (#)=Amounts differ by > 25% (m)=manual int.

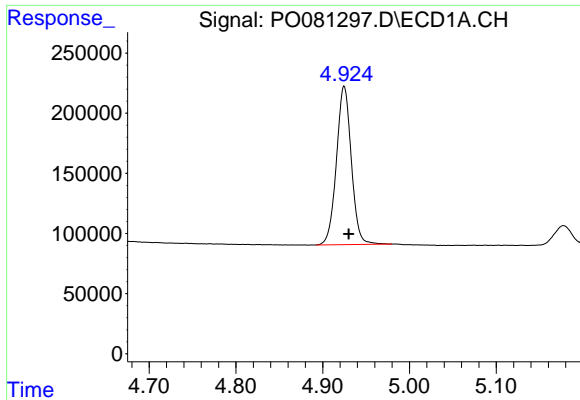
Data Path : Z:\pestpcbsrv\HPCHEM1\ECD\_O\Data\P0091621\  
 Data File : P0081297.D  
 Signal(s) : Signal #1: ECD1A.CH Signal #2: ECD2B.CH  
 Acq On : 16 Sep 2021 13:07  
 Operator : AJ\MA  
 Sample : PB139130BSD  
 Misc :  
 ALS Vial : 10 Sample Multiplier: 1

Instrument :  
 ECD\_O  
 ClientSampled :  
 PB139130BSD

Integration File signal 1: autoint1.e  
 Integration File signal 2: autoint2.e  
 Quant Time: Sep 17 01:26:25 2021  
 Quant Method : Z:\pestpcbsrv\HPCHEM1\ECD\_O\methods\P0090221.M  
 Quant Title : GC EXTRACTABLES  
 QLast Update : Fri Sep 03 07:15:29 2021  
 Response via : Initial Calibration  
 Integrator: ChemStation 6890 Scale Mode: Small noise peaks clipped

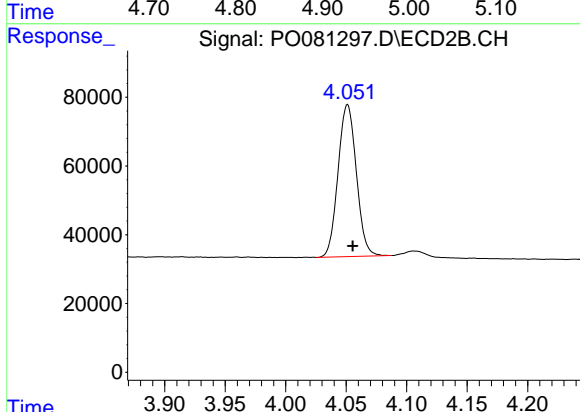
Volume Inj. : 2 µl  
 Signal #1 Phase : ZB-MR1 Signal #2 Phase: ZB-MR2  
 Signal #1 Info : 30Mx0.32mmx 0.50µ Signal #2 Info : 30M x 0.32mm x 0.25µm



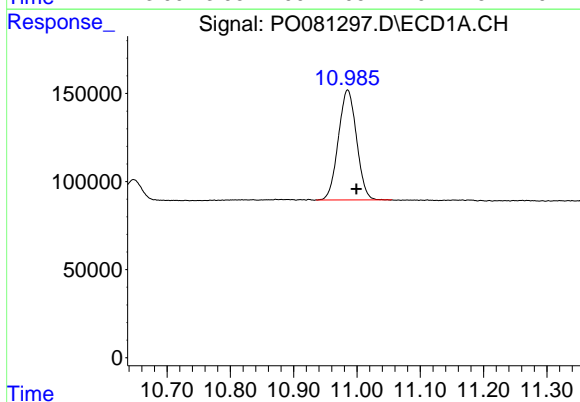


#1 Tetrachloro-m-xylene  
 R.T.: 4.925 min  
 Delta R.T.: -0.005 min  
 Response: 1571679  
 Conc: 19.91 ng/ml

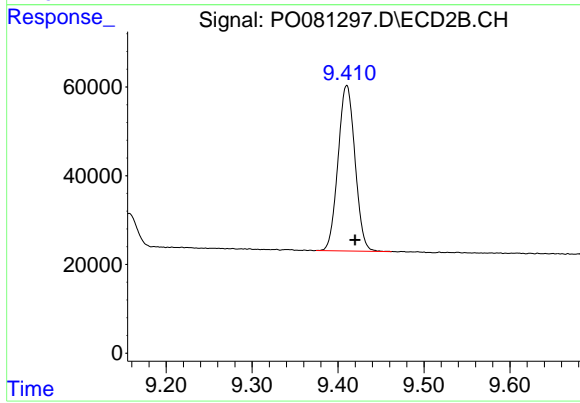
Instrument :  
 ECD\_O  
 ClientSampleId :  
 PB139130BSD



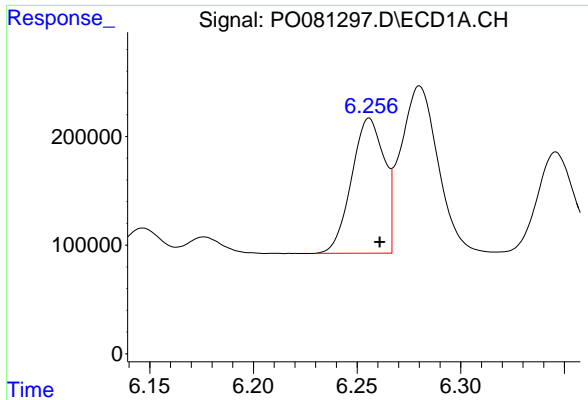
#1 Tetrachloro-m-xylene  
 R.T.: 4.051 min  
 Delta R.T.: -0.004 min  
 Response: 466574  
 Conc: 18.88 ng/ml



#2 Decachlorobiphenyl  
 R.T.: 10.985 min  
 Delta R.T.: -0.014 min  
 Response: 1246392  
 Conc: 20.99 ng/ml



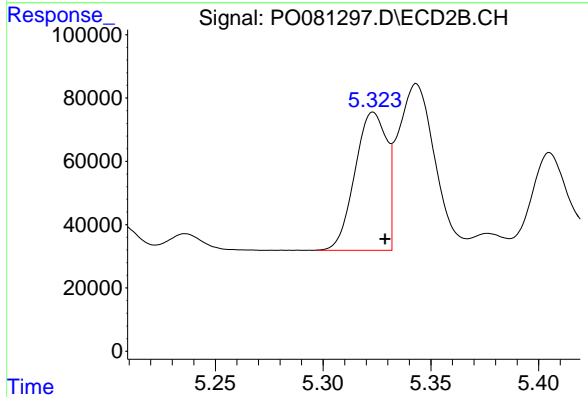
#2 Decachlorobiphenyl  
 R.T.: 9.410 min  
 Delta R.T.: -0.010 min  
 Response: 511162  
 Conc: 21.90 ng/ml



#3 AR-1016-1

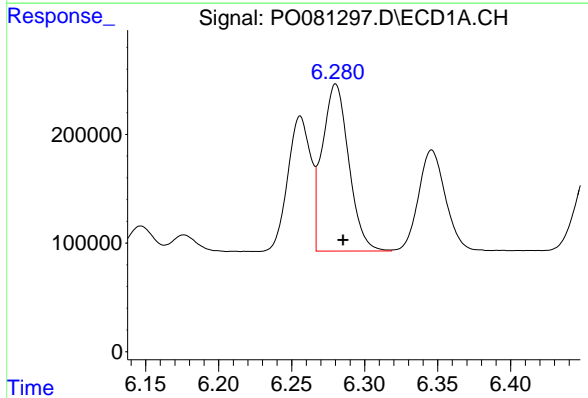
R.T.: 6.256 min  
 Delta R.T.: -0.005 min  
 Response: 1361780  
 Conc: 480.20 ng/ml

Instrument :  
 ECD\_O  
 ClientSampled :  
 PB139130BSD



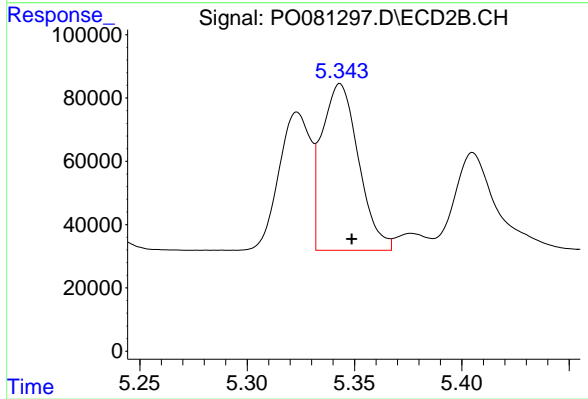
#3 AR-1016-1

R.T.: 5.323 min  
 Delta R.T.: -0.005 min  
 Response: 447068  
 Conc: 463.51 ng/ml



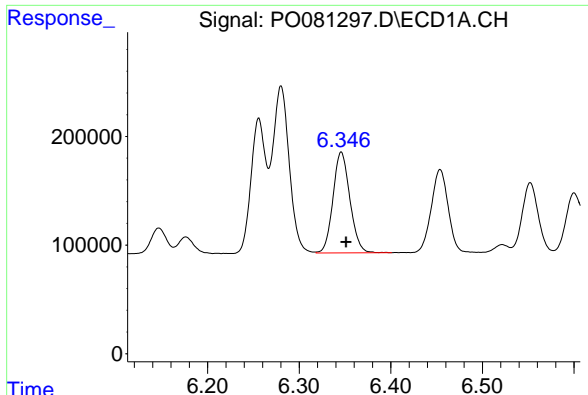
#4 AR-1016-2

R.T.: 6.280 min  
 Delta R.T.: -0.005 min  
 Response: 1936310  
 Conc: 485.29 ng/ml



#4 AR-1016-2

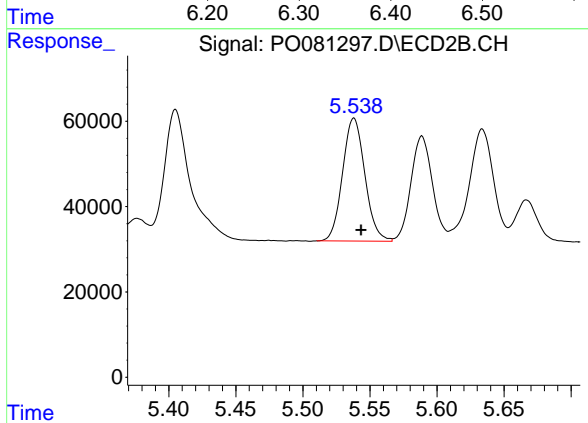
R.T.: 5.343 min  
 Delta R.T.: -0.005 min  
 Response: 626454  
 Conc: 468.39 ng/ml



#5 AR-1016-3

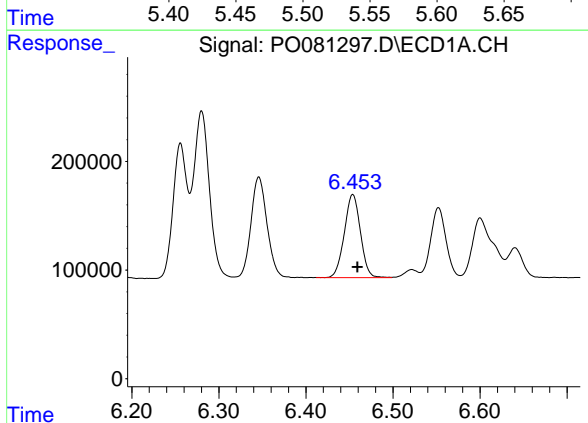
R.T.: 6.346 min  
 Delta R.T.: -0.005 min  
 Response: 1191045  
 Conc: 470.66 ng/ml

Instrument :  
 ECD\_O  
 ClientSampleId :  
 PB139130BSD



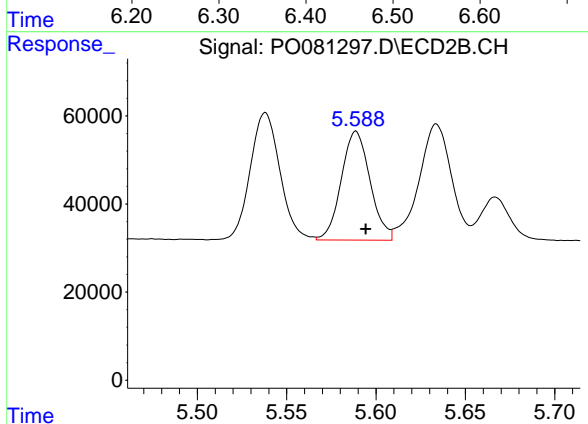
#5 AR-1016-3

R.T.: 5.538 min  
 Delta R.T.: -0.005 min  
 Response: 333079  
 Conc: 465.91 ng/ml



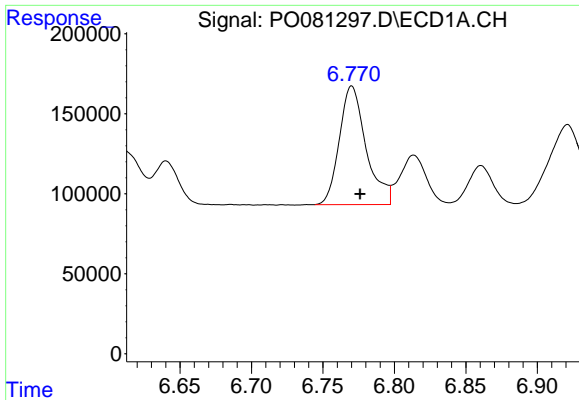
#6 AR-1016-4

R.T.: 6.454 min  
 Delta R.T.: -0.005 min  
 Response: 980588  
 Conc: 462.84 ng/ml



#6 AR-1016-4

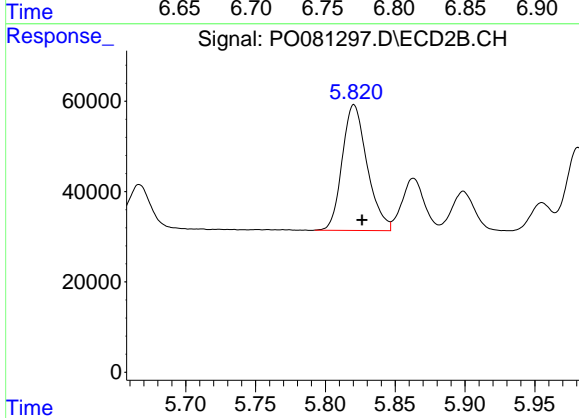
R.T.: 5.589 min  
 Delta R.T.: -0.006 min  
 Response: 277192  
 Conc: 461.13 ng/ml



#7 AR-1016-5

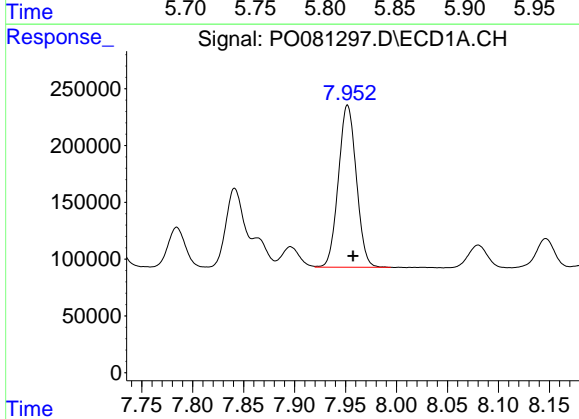
R.T.: 6.770 min  
 Delta R.T.: -0.006 min  
 Response: 965936  
 Conc: 492.05 ng/ml

Instrument :  
 ECD\_O  
 ClientSampleId :  
 PB139130BSD



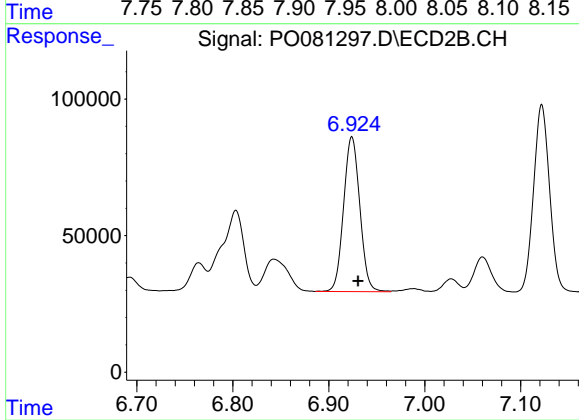
#7 AR-1016-5

R.T.: 5.821 min  
 Delta R.T.: -0.006 min  
 Response: 346054  
 Conc: 459.71 ng/ml



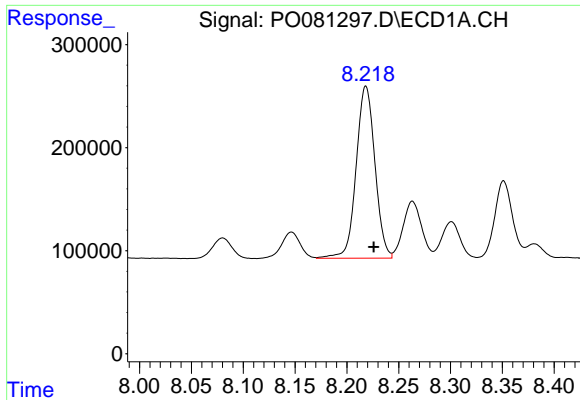
#31 AR-1260-1

R.T.: 7.952 min  
 Delta R.T.: -0.006 min  
 Response: 1749117  
 Conc: 503.19 ng/ml



#31 AR-1260-1

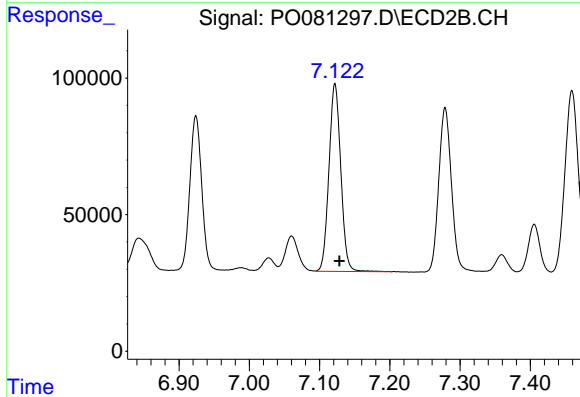
R.T.: 6.924 min  
 Delta R.T.: -0.007 min  
 Response: 667816  
 Conc: 455.04 ng/ml



#32 AR-1260-2

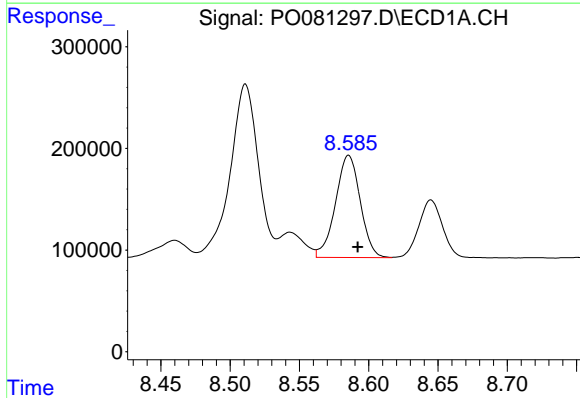
R.T.: 8.218 min  
 Delta R.T.: -0.008 min  
 Response: 2106610  
 Conc: 472.68 ng/ml

Instrument :  
 ECD\_O  
 ClientSampleId :  
 PB139130BSD



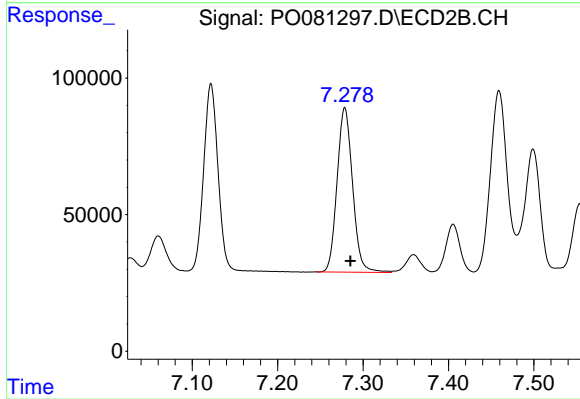
#32 AR-1260-2

R.T.: 7.122 min  
 Delta R.T.: -0.006 min  
 Response: 804384  
 Conc: 458.26 ng/ml



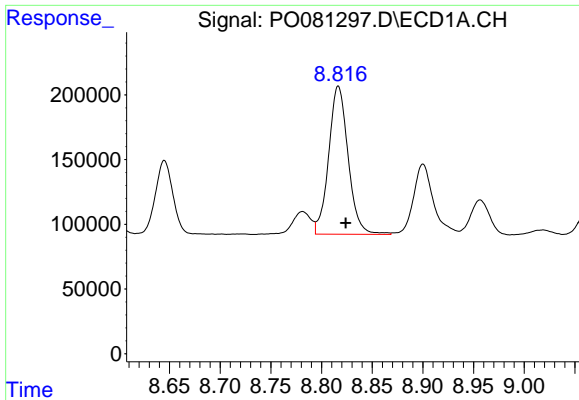
#33 AR-1260-3

R.T.: 8.586 min  
 Delta R.T.: -0.007 min  
 Response: 1250926  
 Conc: 476.69 ng/ml



#33 AR-1260-3

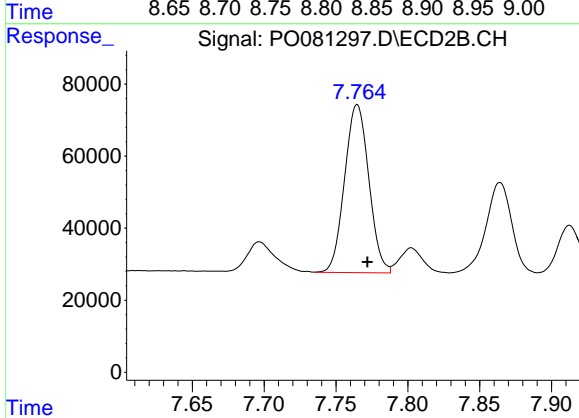
R.T.: 7.279 min  
 Delta R.T.: -0.007 min  
 Response: 759165  
 Conc: 414.69 ng/ml



#34 AR-1260-4

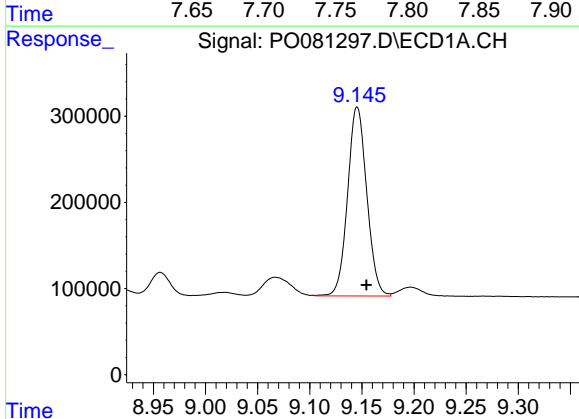
R.T.: 8.817 min  
 Delta R.T.: -0.007 min  
 Response: 1530071  
 Conc: 477.99 ng/ml

Instrument :  
 ECD\_O  
 ClientSampled :  
 PB139130BSD



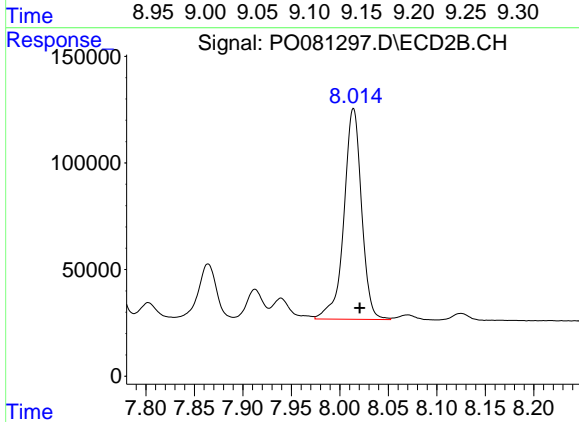
#34 AR-1260-4

R.T.: 7.765 min  
 Delta R.T.: -0.007 min  
 Response: 547407  
 Conc: 463.36 ng/ml



#35 AR-1260-5

R.T.: 9.146 min  
 Delta R.T.: -0.009 min  
 Response: 2806531  
 Conc: 468.80 ng/ml



#35 AR-1260-5

R.T.: 8.014 min  
 Delta R.T.: -0.006 min  
 Response: 1251703  
 Conc: 442.18 ng/ml