

Data Path : Z:\pestpcbsrv\HPCHEM1\ECD\_0\Data\P0091622\  
 Data File : P0089583.D  
 Signal(s) : Signal #1: ECD1A.ch Signal #2: ECD2B.ch  
 Acq On : 16 Sep 2022 10:17  
 Operator : YP/AJ  
 Sample : AR1248CCC500  
 Misc :  
 ALS Vial : 5 Sample Multiplier: 1

Instrument :  
 ECD\_0  
 ClientSampleId :  
 AR1248CCC500

Integration File signal 1: autoint1.e  
 Integration File signal 2: autoint2.e  
 Quant Time: Sep 16 15:47:03 2022  
 Quant Method : Z:\pestpcbsrv\HPCHEM1\ECD\_0\methods\P0091522.M  
 Quant Title : GC EXTRACTABLES  
 QLast Update : Fri Sep 16 08:48:17 2022  
 Response via : Initial Calibration  
 Integrator: ChemStation

Volume Inj. : 2 µl  
 Signal #1 Phase : ZB-MR1 Signal #2 Phase: ZB-MR2  
 Signal #1 Info : 30Mx0.32mmx 0.50µ Signal #2 Info : 30M x 0.32mm x 0.25µm

Compound	RT#1	RT#2	Resp#1	Resp#2	ng/ml	ng/ml
-----						
System Monitoring Compounds						
1) SA Tetrachlo...	4.473	3.659	203.0E6	82456851	52.456	48.384
2) SA Decachlor...	10.351	8.769	133.0E6	54186963	53.878	48.021
Target Compounds						
21) L5 AR-1248-1	5.651	4.763	36856680	14622812	491.678	444.740
22) L5 AR-1248-2	5.928	5.004	53937260	22218635	497.074	447.878
23) L5 AR-1248-3	6.134	5.047	59201870	23420339	496.273	451.660
24) L5 AR-1248-4	6.540	5.221	62958429	26622483	494.764	447.408
25) L5 AR-1248-5	6.580	5.620	60332235	24202405	491.337	458.395
-----						

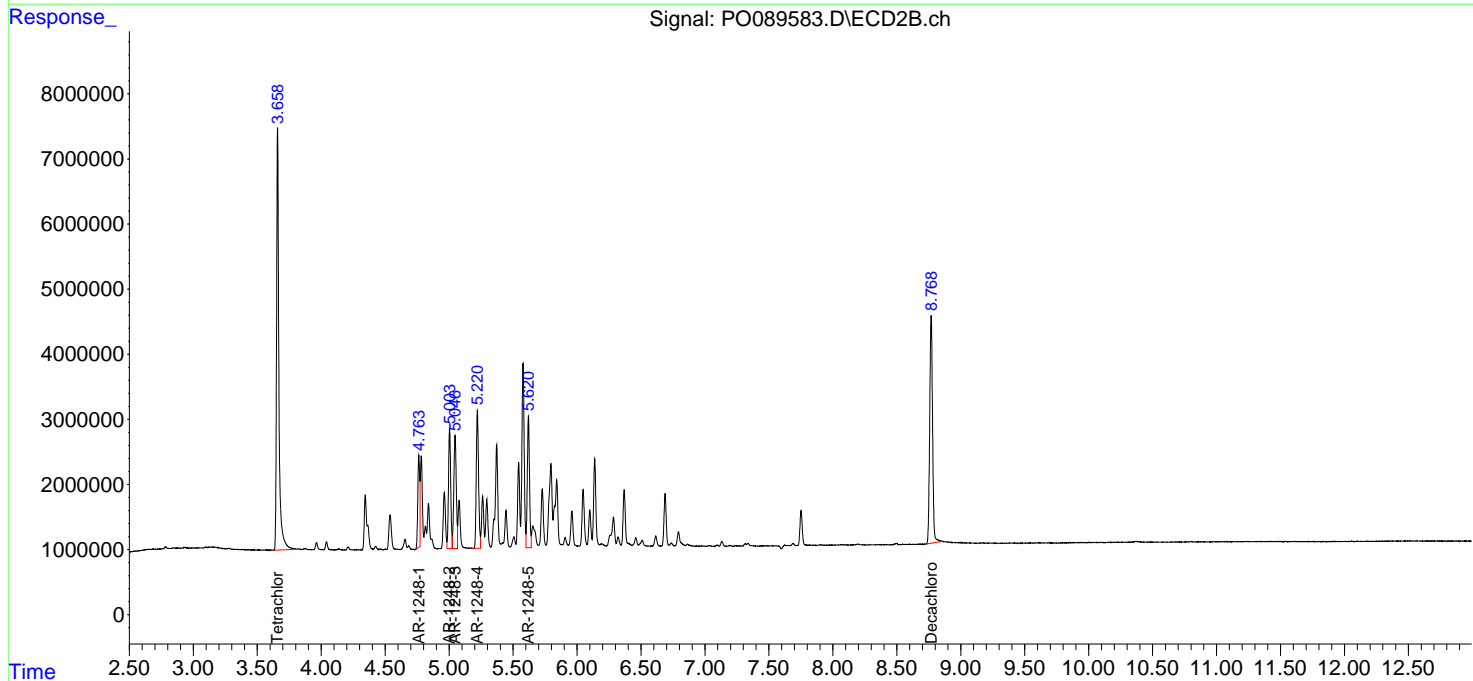
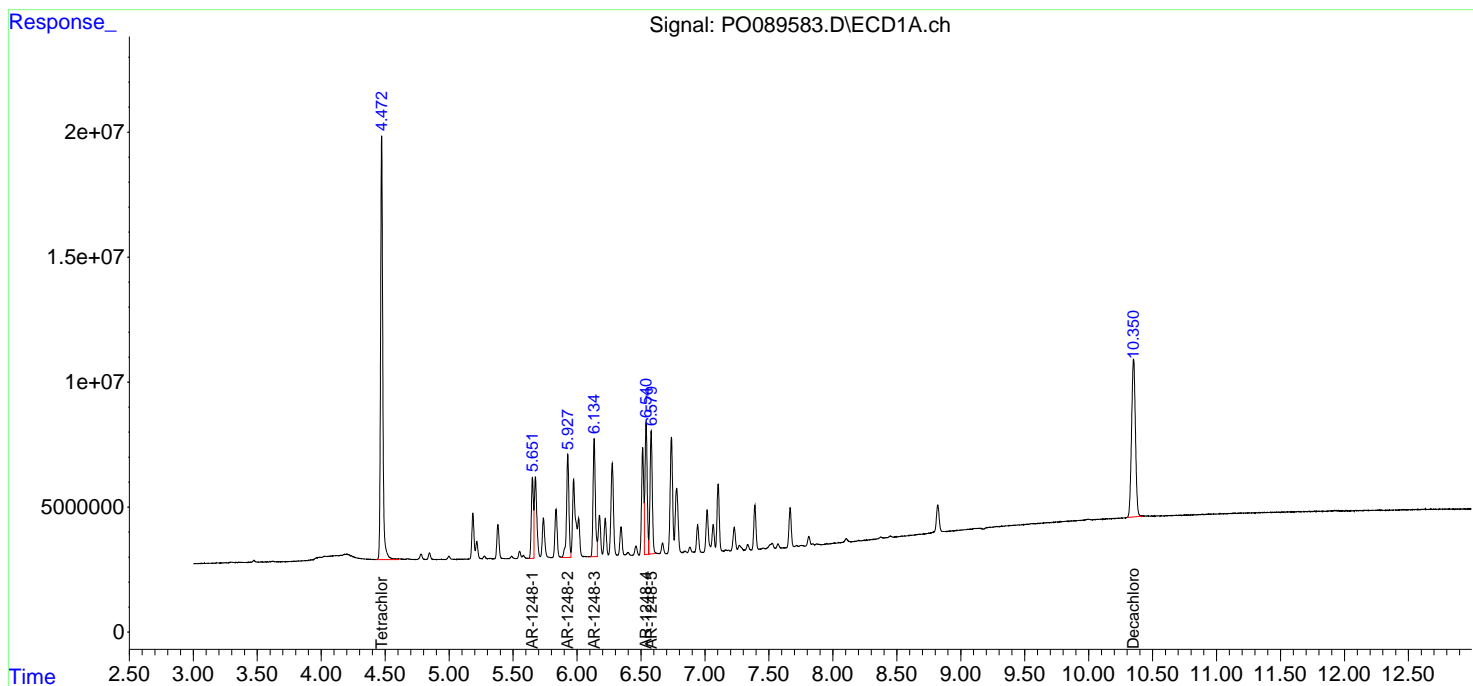
(f)=RT Delta > 1/2 Window (#)=Amounts differ by > 25% (m)=manual int.

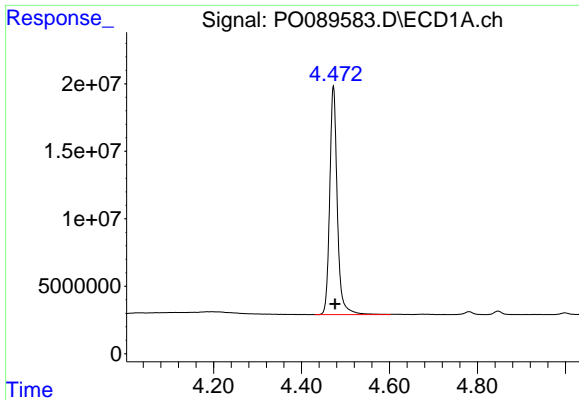
Data Path : Z:\pestpcbsrv\HPCHEM1\ECD\_O\Data\PO091622\  
 Data File : PO089583.D  
 Signal(s) : Signal #1: ECD1A.ch Signal #2: ECD2B.ch  
 Acq On : 16 Sep 2022 10:17  
 Operator : YP/AJ  
 Sample : AR1248CCC500  
 Misc :  
 ALS Vial : 5 Sample Multiplier: 1

Instrument :  
 ECD\_O  
 ClientSampleId :  
 AR1248CCC500

Integration File signal 1: autoint1.e  
 Integration File signal 2: autoint2.e  
 Quant Time: Sep 16 15:47:03 2022  
 Quant Method : Z:\pestpcbsrv\HPCHEM1\ECD\_O\methods\PO091522.M  
 Quant Title : GC EXTRACTABLES  
 QLast Update : Fri Sep 16 08:48:17 2022  
 Response via : Initial Calibration  
 Integrator: ChemStation

Volume Inj. : 2 µl  
 Signal #1 Phase : ZB-MR1 Signal #2 Phase: ZB-MR2  
 Signal #1 Info : 30Mx0.32mmx 0.50µ Signal #2 Info : 30M x 0.32mm x 0.25µm

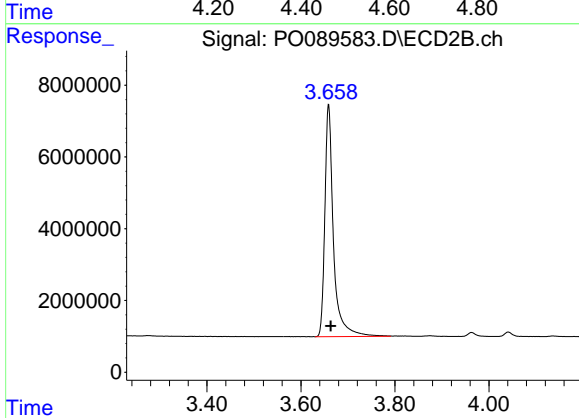




#1 Tetrachloro-m-xylene

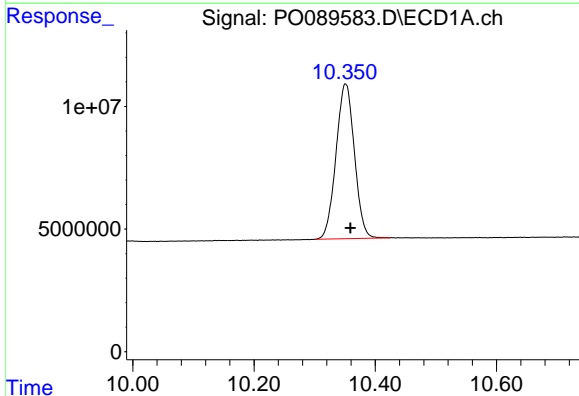
R.T.: 4.473 min  
 Delta R.T.: -0.003 min  
 Response: 203014880  
 Conc: 52.46 ng/ml

Instrument :  
 ECD\_O  
 ClientSampleId :  
 AR1248CCC500



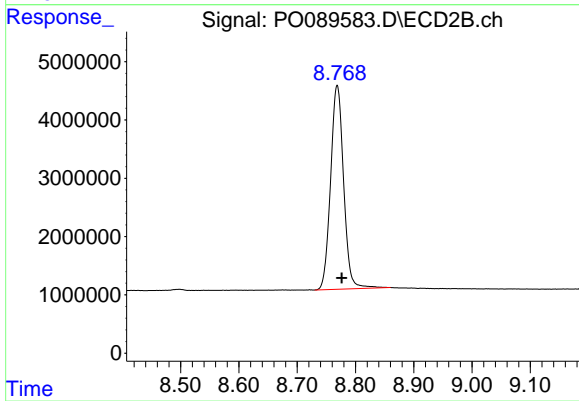
#1 Tetrachloro-m-xylene

R.T.: 3.659 min  
 Delta R.T.: -0.004 min  
 Response: 82456851  
 Conc: 48.38 ng/ml



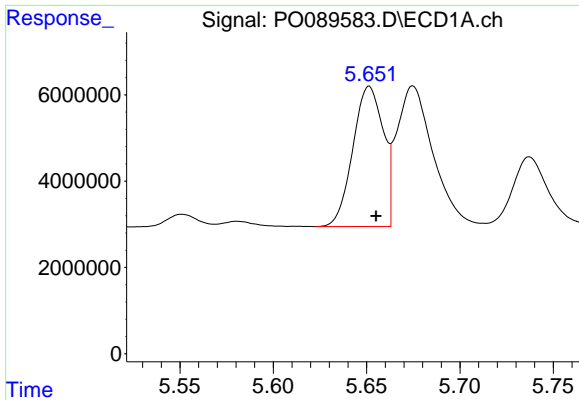
#2 Decachlorobiphenyl

R.T.: 10.351 min  
 Delta R.T.: -0.008 min  
 Response: 133009166  
 Conc: 53.88 ng/ml



#2 Decachlorobiphenyl

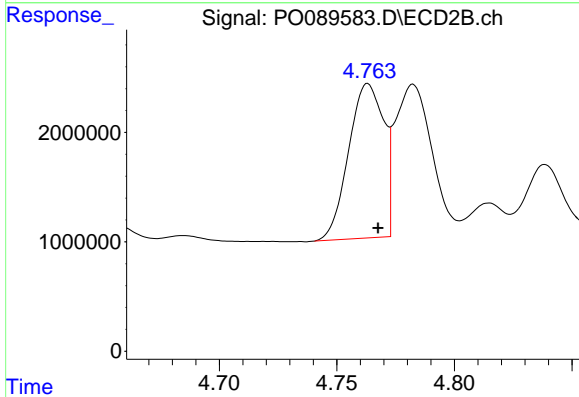
R.T.: 8.769 min  
 Delta R.T.: -0.008 min  
 Response: 54186963  
 Conc: 48.02 ng/ml



#21 AR-1248-1

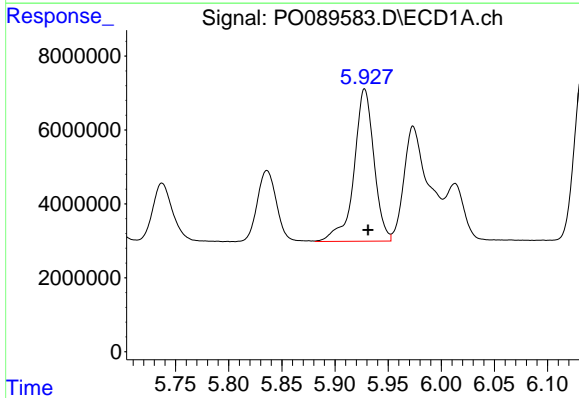
R.T.: 5.651 min  
 Delta R.T.: -0.004 min  
 Response: 36856680  
 Conc: 491.68 ng/ml

Instrument :  
 ECD\_O  
 ClientSampleId :  
 AR1248CCC500



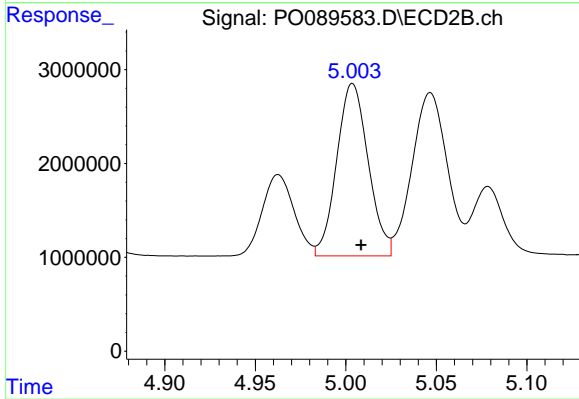
#21 AR-1248-1

R.T.: 4.763 min  
 Delta R.T.: -0.004 min  
 Response: 14622812  
 Conc: 444.74 ng/ml



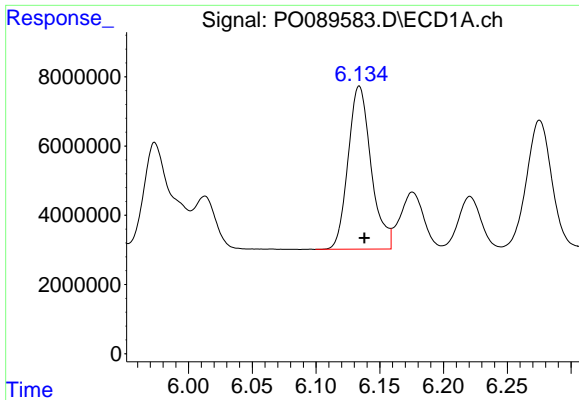
#22 AR-1248-2

R.T.: 5.928 min  
 Delta R.T.: -0.003 min  
 Response: 53937260  
 Conc: 497.07 ng/ml



#22 AR-1248-2

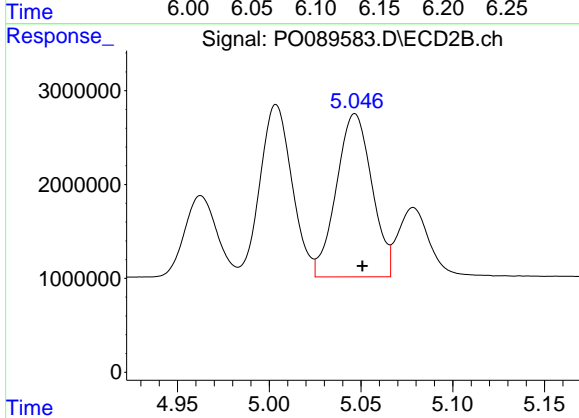
R.T.: 5.004 min  
 Delta R.T.: -0.005 min  
 Response: 22218635  
 Conc: 447.88 ng/ml



#23 AR-1248-3

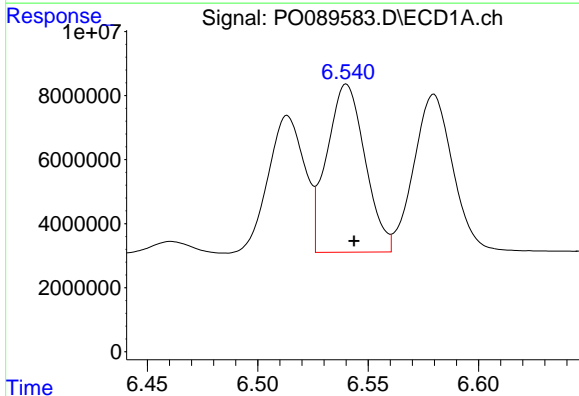
R.T.: 6.134 min  
 Delta R.T.: -0.004 min  
 Response: 59201870  
 Conc: 496.27 ng/ml

Instrument :  
 ECD\_O  
 ClientSampleId :  
 AR1248CCC500



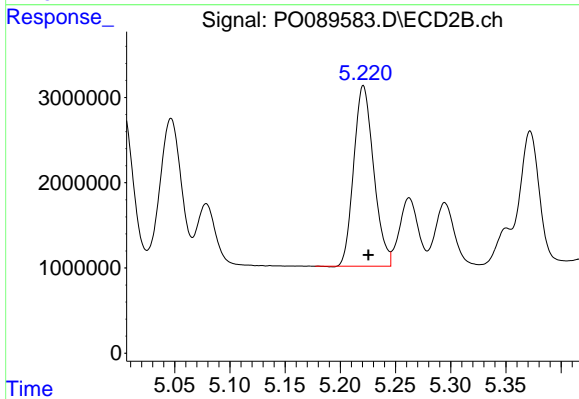
#23 AR-1248-3

R.T.: 5.047 min  
 Delta R.T.: -0.004 min  
 Response: 23420339  
 Conc: 451.66 ng/ml



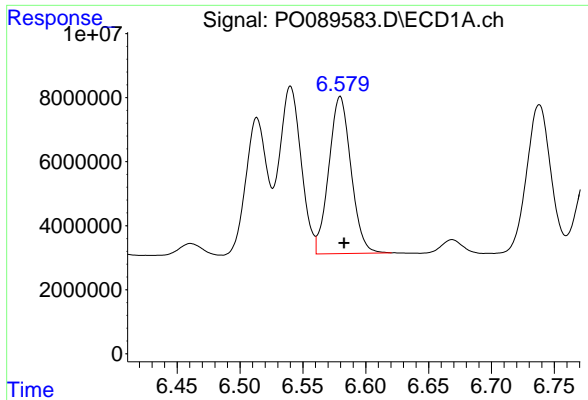
#24 AR-1248-4

R.T.: 6.540 min  
 Delta R.T.: -0.004 min  
 Response: 62958429  
 Conc: 494.76 ng/ml



#24 AR-1248-4

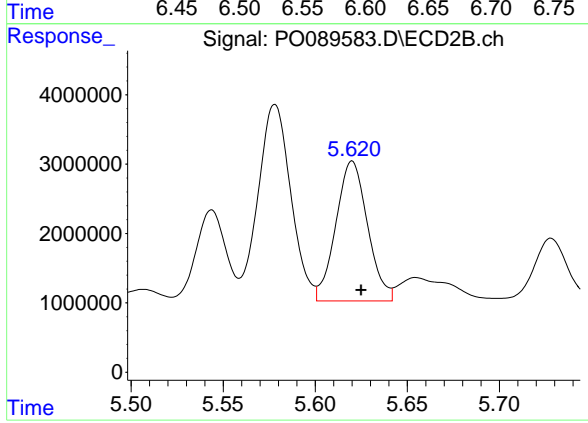
R.T.: 5.221 min  
 Delta R.T.: -0.005 min  
 Response: 26622483  
 Conc: 447.41 ng/ml



#25 AR-1248-5

R.T.: 6.580 min  
Delta R.T.: -0.003 min  
Response: 60332235  
Conc: 491.34 ng/ml

Instrument :  
ECD\_O  
ClientSampleId :  
AR1248CCC500



#25 AR-1248-5

R.T.: 5.620 min  
Delta R.T.: -0.005 min  
Response: 24202405  
Conc: 458.40 ng/ml