

Data Path : Z:\pestpcbsrv\HPCHEM1\ECD_0\Data\P0091622\
 Data File : P0089611.D
 Signal(s) : Signal #1: ECD1A.ch Signal #2: ECD2B.ch
 Acq On : 17 Sep 2022 00:22
 Operator : YP/AJ
 Sample : AR1660CCC500
 Misc :
 ALS Vial : 3 Sample Multiplier: 1

Instrument :
 ECD_0
ClientSampleId :
 AR1660CCC500

Manual Integrations
APPROVED

Reviewed By :Yogesh Patel 09/19/2022
 Supervised By :Ankita Jodhani 09/19/2022

Integration File signal 1: autoint1.e
 Integration File signal 2: autoint2.e
 Quant Time: Sep 17 04:23:22 2022
 Quant Method : Z:\pestpcbsrv\HPCHEM1\ECD_0\methods\P0091522.M
 Quant Title : GC EXTRACTABLES
 QLast Update : Fri Sep 16 08:48:17 2022
 Response via : Initial Calibration
 Integrator: ChemStation

Volume Inj. : 2 µl
 Signal #1 Phase : ZB-MR2 Signal #2 Phase: ZB-MR2
 Signal #1 Info : 30Mx0.32mmx 0.50µ Signal #2 Info : 30M x 0.32mm x 0.25µm

Compound	RT#1	RT#2	Resp#1	Resp#2	ng/ml	ng/ml

System Monitoring Compounds						
1) SA Tetrachlo...	4.473	3.659	214.6E6	79420294	55.447	46.602
2) SA Decachlor...	10.346	8.765	135.3E6	49604168	54.814	43.959
Target Compounds						
3) L1 AR-1016-1	5.652	4.763	67230407	23745622	586.740	494.233
4) L1 AR-1016-2	5.675	4.782	95132705	34077464	576.186	482.406
5) L1 AR-1016-3	5.737	4.961	59782178	18521840	579.746	492.751
6) L1 AR-1016-4	5.837	5.003	49004989	15058265	598.883	467.158
7) L1 AR-1016-5	6.133	5.221	46950571	19821854	586.970m	484.154
31) L7 AR-1260-1	7.268	6.270	80388344	35063923	559.701	471.294
32) L7 AR-1260-2	7.526	6.460	92811742	41358488	567.571	482.101
33) L7 AR-1260-3	7.888	6.616	66698948	38524674	556.510	472.914
34) L7 AR-1260-4	8.116	7.094	76285818	30481861	564.966	472.033
35) L7 AR-1260-5	8.446	7.337	152.2E6	62971449	573.588	475.703

(f)=RT Delta > 1/2 Window (#)=Amounts differ by > 25% (m)=manual int.

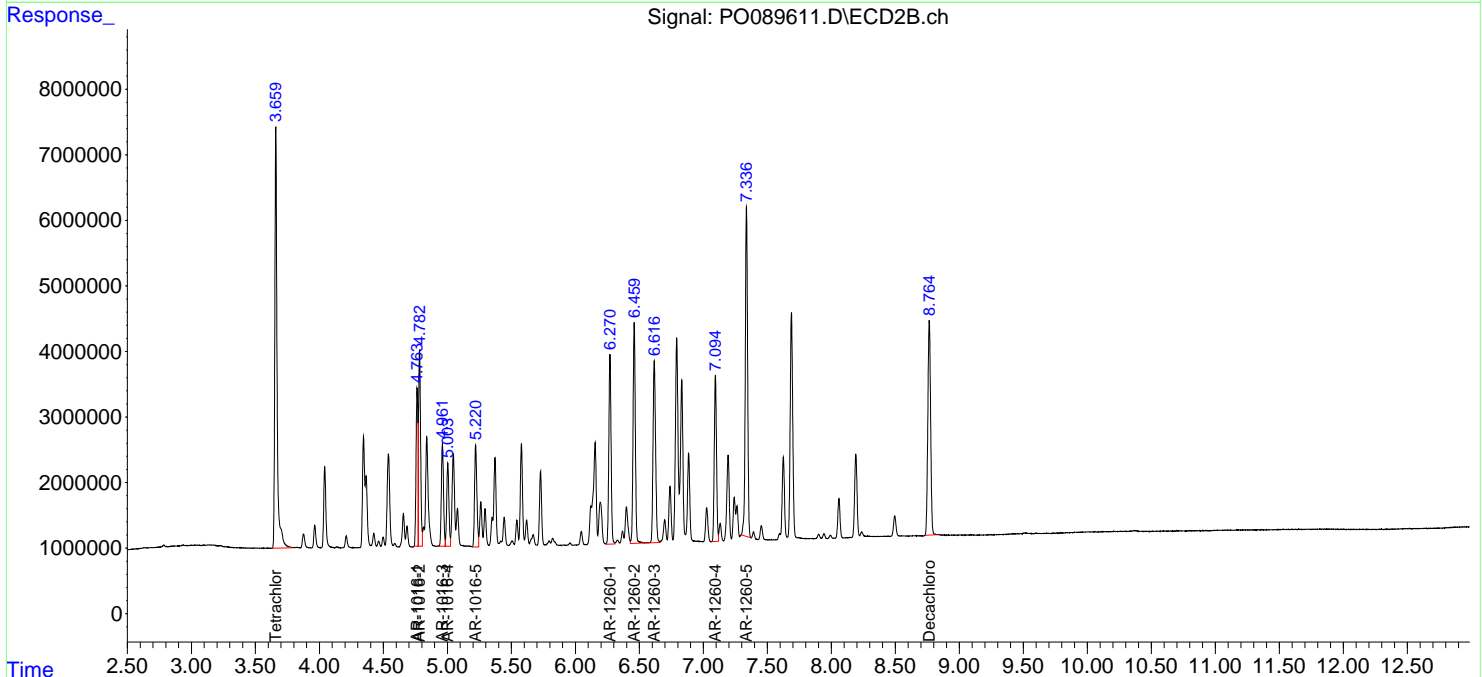
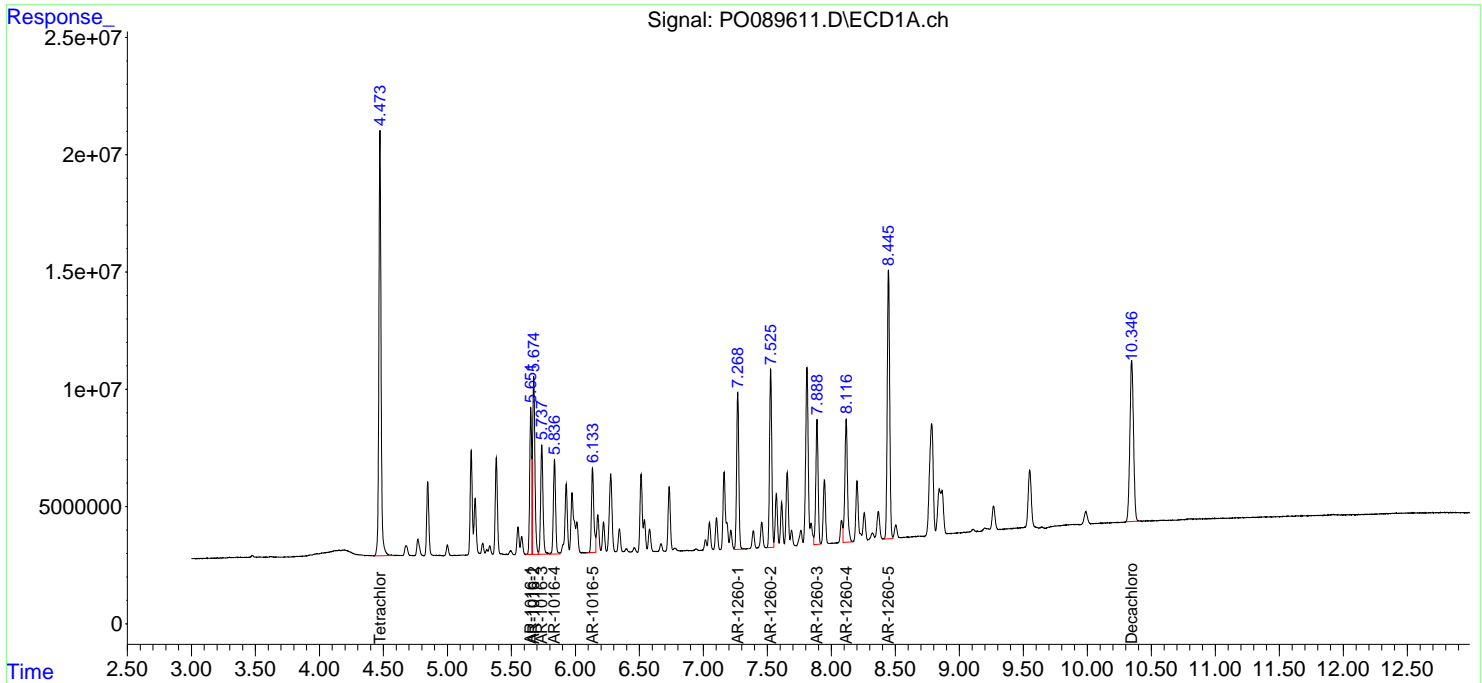
Data Path : Z:\pestpcbsrv\HPCHEM1\ECD_O\Data\PO091622\
 Data File : PO089611.D
 Signal(s) : Signal #1: ECD1A.ch Signal #2: ECD2B.ch
 Acq On : 17 Sep 2022 00:22
 Operator : YP/AJ
 Sample : AR1660CCC500
 Misc :
 ALS Vial : 3 Sample Multiplier: 1

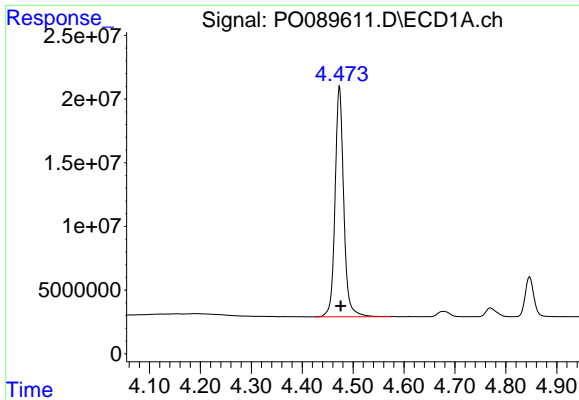
Instrument :
 ECD_O
ClientSampleId :
 AR1660CCC500

Manual Integrations
APPROVED
 Reviewed By :Yogesh Patel 09/19/2022
 Supervised By :Ankita Jodhani 09/19/2022

Integration File signal 1: autoint1.e
 Integration File signal 2: autoint2.e
 Quant Time: Sep 17 04:23:22 2022
 Quant Method : Z:\pestpcbsrv\HPCHEM1\ECD_O\methods\PO091522.M
 Quant Title : GC EXTRACTABLES
 QLast Update : Fri Sep 16 08:48:17 2022
 Response via : Initial Calibration
 Integrator: ChemStation

Volume Inj. : 2 µl
 Signal #1 Phase : ZB-MR1 Signal #2 Phase: ZB-MR2
 Signal #1 Info : 30Mx0.32mmx 0.50µ Signal #2 Info : 30M x 0.32mm x 0.25µm

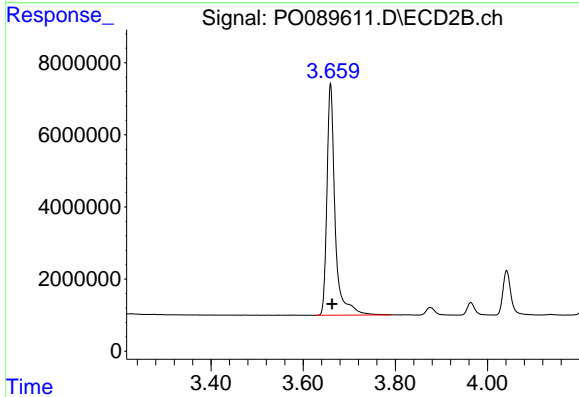




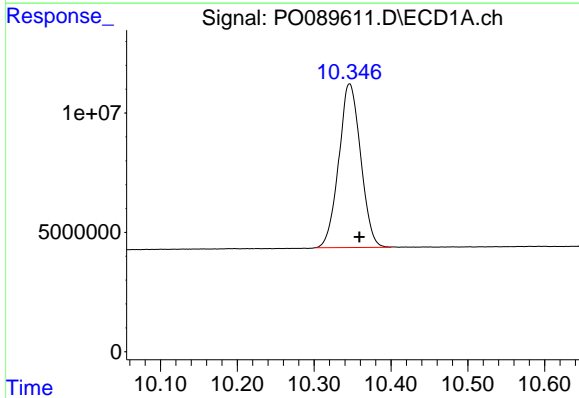
#1 Tetrachloro-m-xylene
 R.T.: 4.473 min
 Delta R.T.: -0.003 min
 Response: 214592151
 Conc: 55.45 ng/ml

Instrument :
 ECD_O
 ClientSampleId :
 AR1660CCC500

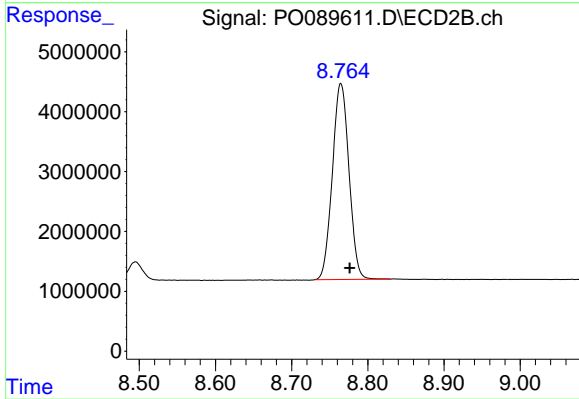
Manual Integrations
APPROVED
 Reviewed By :Yogesh Patel 09/19/2022
 Supervised By :Ankita Jodhani 09/19/2022



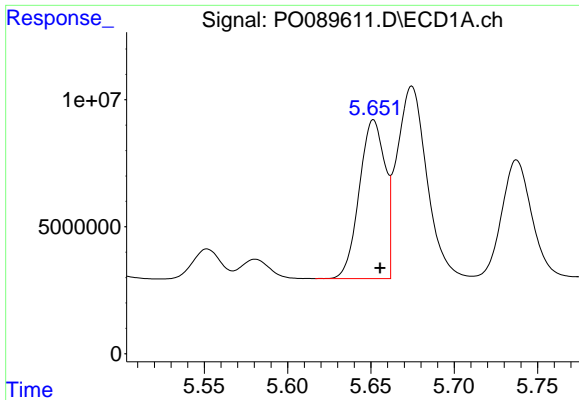
#1 Tetrachloro-m-xylene
 R.T.: 3.659 min
 Delta R.T.: -0.004 min
 Response: 79420294
 Conc: 46.60 ng/ml



#2 Decachlorobiphenyl
 R.T.: 10.346 min
 Delta R.T.: -0.013 min
 Response: 135319931
 Conc: 54.81 ng/ml



#2 Decachlorobiphenyl
 R.T.: 8.765 min
 Delta R.T.: -0.012 min
 Response: 49604168
 Conc: 43.96 ng/ml



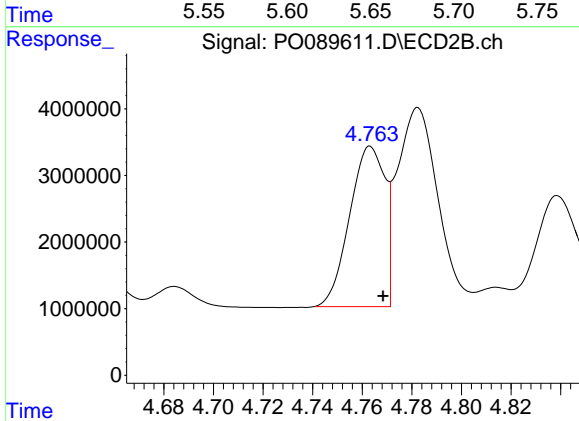
#3 AR-1016-1

R.T.: 5.652 min
 Delta R.T.: -0.004 min
 Response: 67230407
 Conc: 586.74 ng/ml

Instrument :
 ECD_O
 ClientSampleId :
 AR1660CCC500

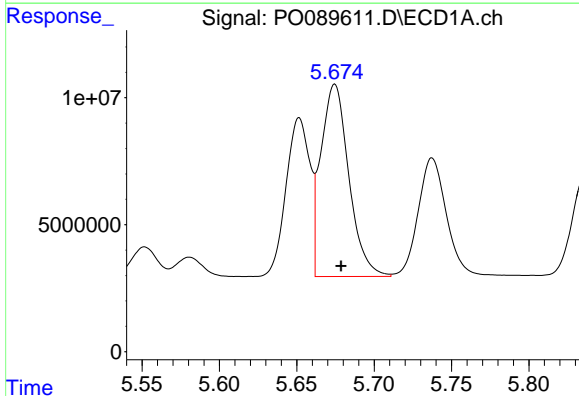
Manual Integrations
 APPROVED

Reviewed By :Yogesh Patel 09/19/2022
 Supervised By :Ankita Jodhani 09/19/2022



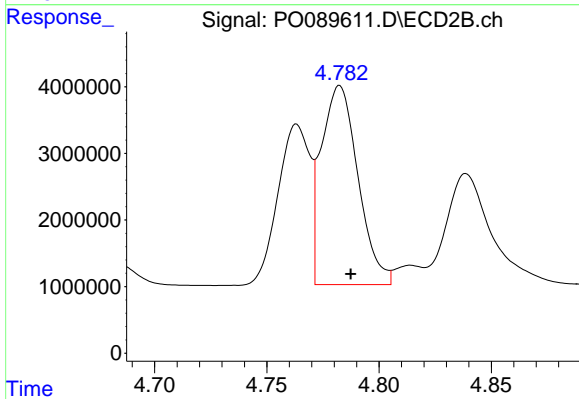
#3 AR-1016-1

R.T.: 4.763 min
 Delta R.T.: -0.005 min
 Response: 23745622
 Conc: 494.23 ng/ml



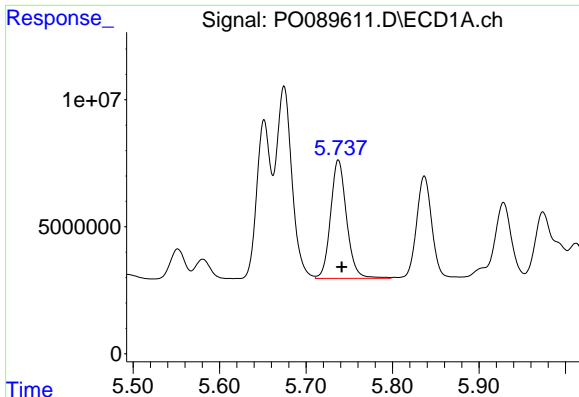
#4 AR-1016-2

R.T.: 5.675 min
 Delta R.T.: -0.004 min
 Response: 95132705
 Conc: 576.19 ng/ml



#4 AR-1016-2

R.T.: 4.782 min
 Delta R.T.: -0.005 min
 Response: 34077464
 Conc: 482.41 ng/ml



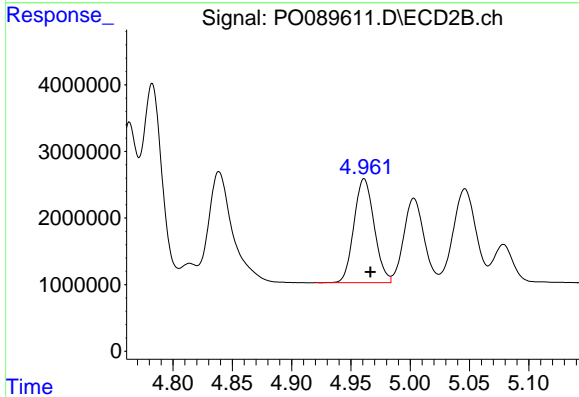
#5 AR-1016-3

R.T.: 5.737 min
 Delta R.T.: -0.004 min
 Response: 59782178
 Conc: 579.75 ng/ml

Instrument :
 ECD_O
 ClientSampleId :
 AR1660CCC500

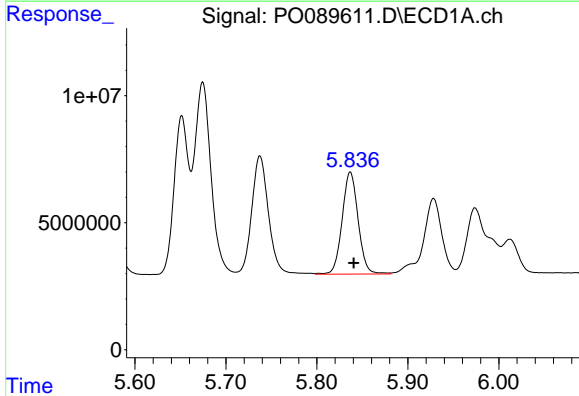
Manual Integrations
 APPROVED

Reviewed By :Yogesh Patel 09/19/2022
 Supervised By :Ankita Jodhani 09/19/2022



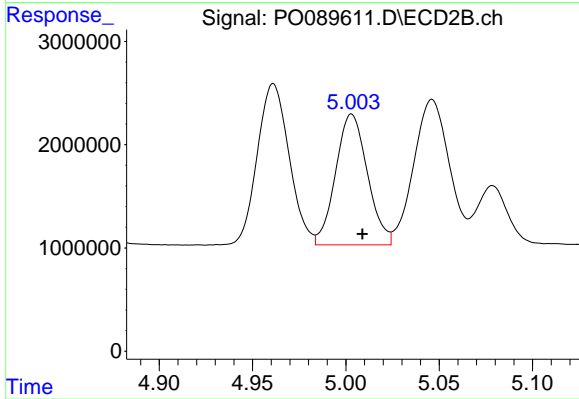
#5 AR-1016-3

R.T.: 4.961 min
 Delta R.T.: -0.005 min
 Response: 18521840
 Conc: 492.75 ng/ml



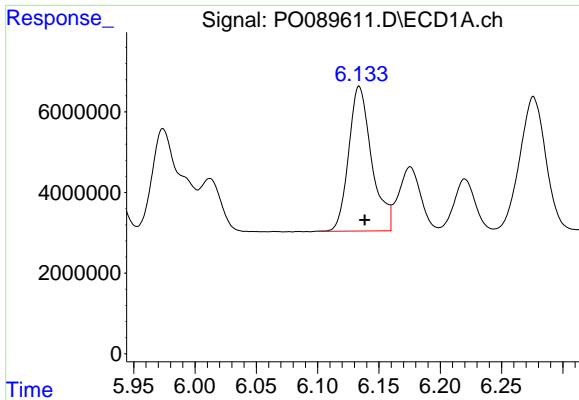
#6 AR-1016-4

R.T.: 5.837 min
 Delta R.T.: -0.004 min
 Response: 49004989
 Conc: 598.88 ng/ml



#6 AR-1016-4

R.T.: 5.003 min
 Delta R.T.: -0.006 min
 Response: 15058265
 Conc: 467.16 ng/ml



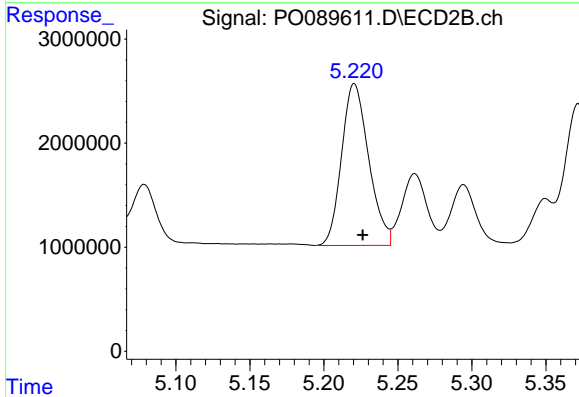
#7 AR-1016-5

R.T.: 6.133 min
 Delta R.T.: -0.005 min
 Response: 46950571
 Conc: 586.97 ng/ml

Instrument :
 ECD_O
 ClientSampleId :
 AR1660CCC500

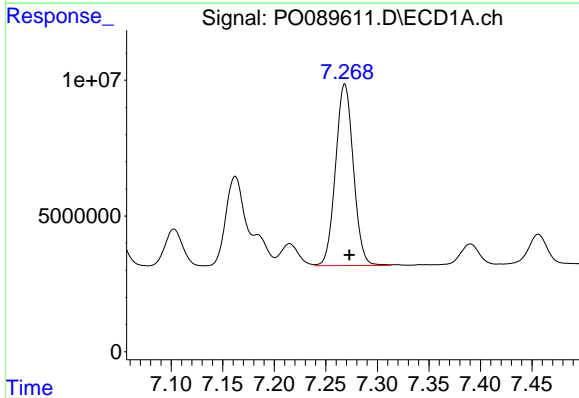
Manual Integrations
 APPROVED

Reviewed By :Yogesh Patel 09/19/2022
 Supervised By :Ankita Jodhani 09/19/2022



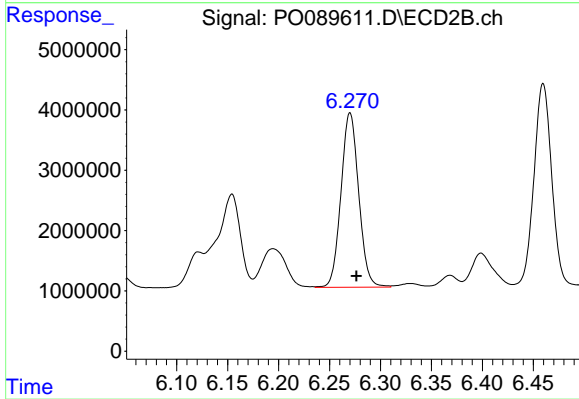
#7 AR-1016-5

R.T.: 5.221 min
 Delta R.T.: -0.006 min
 Response: 19821854
 Conc: 484.15 ng/ml



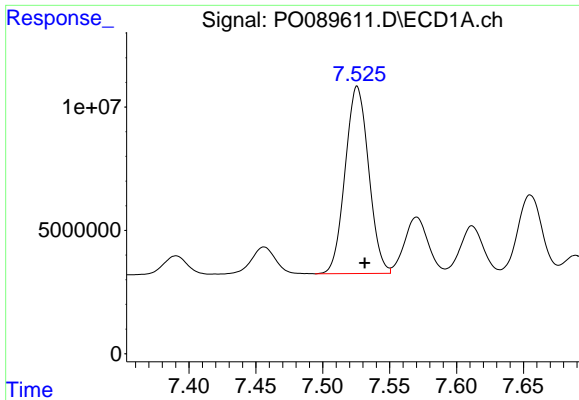
#31 AR-1260-1

R.T.: 7.268 min
 Delta R.T.: -0.005 min
 Response: 80388344
 Conc: 559.70 ng/ml



#31 AR-1260-1

R.T.: 6.270 min
 Delta R.T.: -0.006 min
 Response: 35063923
 Conc: 471.29 ng/ml



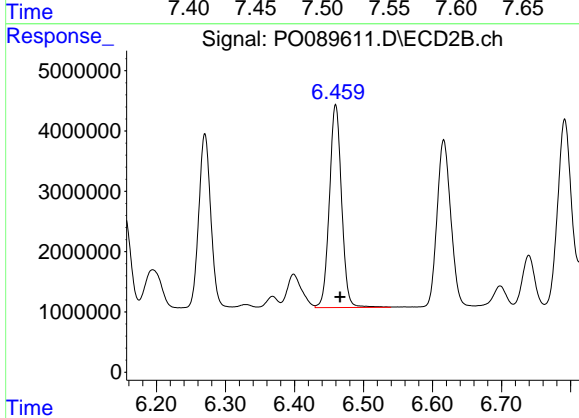
#32 AR-1260-2

R.T.: 7.526 min
 Delta R.T.: -0.006 min
 Response: 92811742
 Conc: 567.57 ng/ml

Instrument :
 ECD_O
 ClientSampleId :
 AR1660CCC500

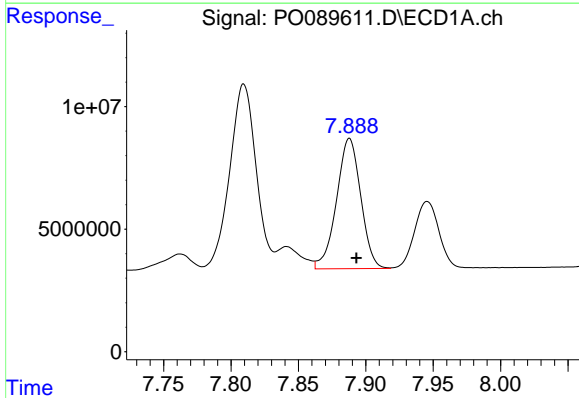
Manual Integrations
 APPROVED

Reviewed By :Yogesh Patel 09/19/2022
 Supervised By :Ankita Jodhani 09/19/2022



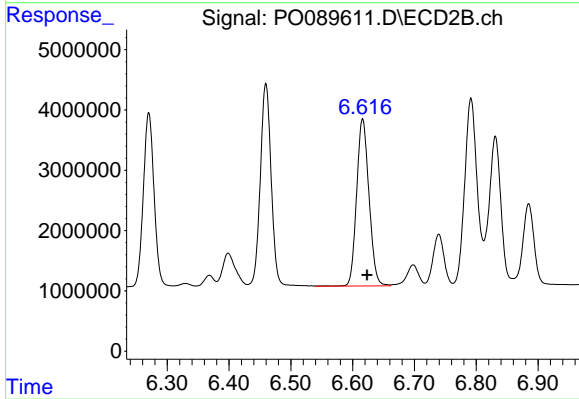
#32 AR-1260-2

R.T.: 6.460 min
 Delta R.T.: -0.006 min
 Response: 41358488
 Conc: 482.10 ng/ml



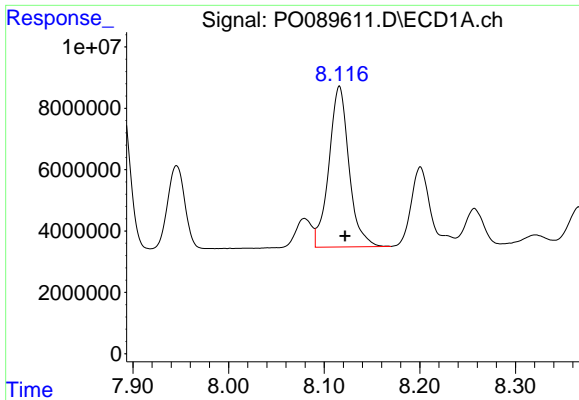
#33 AR-1260-3

R.T.: 7.888 min
 Delta R.T.: -0.005 min
 Response: 66698948
 Conc: 556.51 ng/ml



#33 AR-1260-3

R.T.: 6.616 min
 Delta R.T.: -0.007 min
 Response: 38524674
 Conc: 472.91 ng/ml



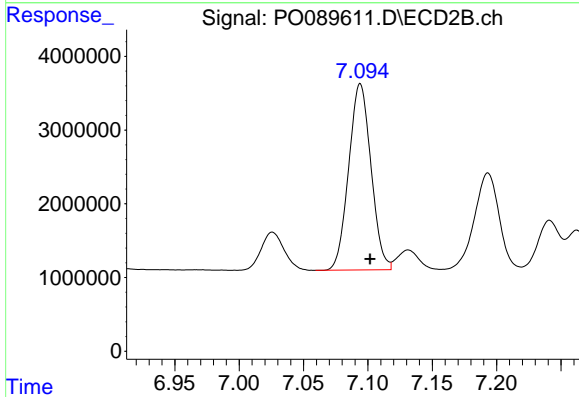
#34 AR-1260-4

R.T.: 8.116 min
 Delta R.T.: -0.006 min
 Response: 76285818
 Conc: 564.97 ng/ml

Instrument :
 ECD_O
 ClientSampleId :
 AR1660CCC500

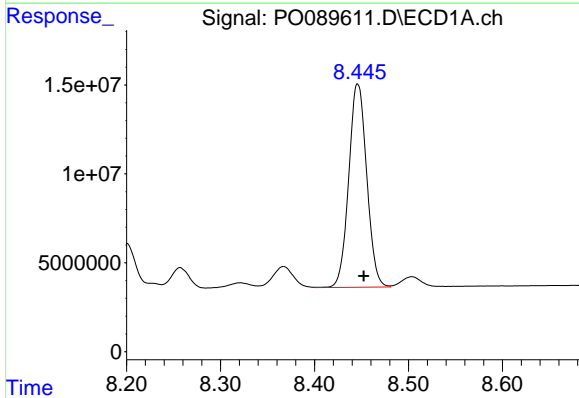
Manual Integrations
 APPROVED

Reviewed By :Yogesh Patel 09/19/2022
 Supervised By :Ankita Jodhani 09/19/2022



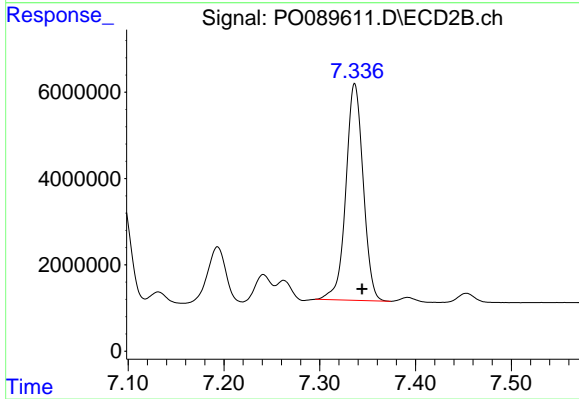
#34 AR-1260-4

R.T.: 7.094 min
 Delta R.T.: -0.008 min
 Response: 30481861
 Conc: 472.03 ng/ml



#35 AR-1260-5

R.T.: 8.446 min
 Delta R.T.: -0.006 min
 Response: 152226349
 Conc: 573.59 ng/ml



#35 AR-1260-5

R.T.: 7.337 min
 Delta R.T.: -0.008 min
 Response: 62971449
 Conc: 475.70 ng/ml