

Data Path : Z:\pestpcbsrv\HPCHEM1\ECD\_0\Data\P0091624\  
 Data File : P0106587.D  
 Signal(s) : Signal #1: ECD1A.ch Signal #2: ECD2B.ch  
 Acq On : 16 Sep 2024 13:26  
 Operator : YP/AJ  
 Sample : P4002-03  
 Misc :  
 ALS Vial : 15 Sample Multiplier: 1

Instrument :  
 ECD\_0  
 ClientSampleId :  
 TP-2

Integration File signal 1: autoint1.e  
 Integration File signal 2: autoint2.e  
 Quant Time: Sep 17 02:02:24 2024  
 Quant Method : Z:\pestpcbsrv\HPCHEM1\ECD\_0\methods\P0090924.M  
 Quant Title : GC EXTRACTABLES  
 QLast Update : Tue Sep 10 09:57:51 2024  
 Response via : Initial Calibration  
 Integrator: ChemStation

Volume Inj. : 2 µl  
 Signal #1 Phase : ZB-MR1 Signal #2 Phase: ZB-MR2  
 Signal #1 Info : 30Mx0.32mmx 0.50µ Signal #2 Info : 30M x 0.32mm x 0.25µm

Compound	RT#1	RT#2	Resp#1	Resp#2	ng/ml	ng/ml
System Monitoring Compounds						
1) SA Tetrachlo...	4.450	3.713	152.2E6	53060066	20.284	19.864
2) SA Decachlor...	10.191	8.736	76552857	31044827	15.488	15.521
Target Compounds						
3) L1 AR-1016-1	5.630	4.784	77953	601687	0.305	6.317 #
4) L1 AR-1016-2	5.630	4.830	77953	22770	0.219	0.178
5) L1 AR-1016-3	5.714	4.987	838282	1027132	3.846	14.890 #
6) L1 AR-1016-4	5.800	5.040	68454	729277	0.386	13.732 #
7) L1 AR-1016-5	6.089	5.242	304486	825990	1.764	11.563 #
8) L2 AR-1221-1	4.656	3.929	442160	233985	4.786	7.737 #
9) L2 AR-1221-2	4.755	4.014	1929357	935262	27.230	41.315 #
10) L2 AR-1221-3	4.817	4.084	677901	351469	3.348	4.948 #
11) L3 AR-1232-1	4.817	4.084	677901	351469	3.879	5.821 #
12) L3 AR-1232-2	5.304f	4.830	22106629	22770	236.990	0.392 #
13) L3 AR-1232-3	5.630	4.987	77953	1027132	0.475	32.971 #
14) L3 AR-1232-4	5.800	5.082	68454	681657	0.831	24.943 #
15) L3 AR-1232-5	5.886	5.242	606361	825990	9.551	28.184 #
16) L4 AR-1242-1	5.630	4.784	77953	601687	0.389	8.148 #
17) L4 AR-1242-2	5.630	4.830	77953	22770	0.283	0.233
18) L4 AR-1242-3	5.714	4.987	838282	1027132	4.887	19.145 #
19) L4 AR-1242-4	5.800	5.082	68454	681657	0.492	12.852 #
20) L4 AR-1242-5	6.524	5.602	14441617	4581355	103.837	65.596 #
21) L5 AR-1248-1	5.630	4.784	77953	601687	0.494	10.400 #
22) L5 AR-1248-2	5.886	5.040	606361	729277	2.795	9.330 #
23) L5 AR-1248-3	6.089	5.082	304486	681657	1.275	8.294 #
24) L5 AR-1248-4	6.524	5.242	14441617	825990	54.997	8.413 #
25) L5 AR-1248-5	6.524	5.650	14441617	1692491	57.588	17.475 #
26) L6 AR-1254-1	6.466	5.602	5230872	4581355	20.072	32.525 #
27) L6 AR-1254-2	6.687	5.751	8032050	2404371	20.614	18.871
28) L6 AR-1254-3	7.047	6.156	162.1E6	4672558	415.819	23.209 #
29) L6 AR-1254-4	7.334	6.395	8820073	261435	30.352	2.101 #
30) L6 AR-1254-5	7.755	6.799	8670603	1083401	28.490	6.049 #
31) L7 AR-1260-1	7.213	6.285	9514614	3140175	33.724	24.281 #
32) L7 AR-1260-2	7.473	6.470	3683975	3431172	11.043	21.619 #
33) L7 AR-1260-3	7.833	6.625	9697667	1038445	42.965	6.732 #
34) L7 AR-1260-4	8.060	7.093	3953473	196057	14.289	1.844 #
35) L7 AR-1260-5	8.372	7.339	6863774	2126209	13.905	8.266 #
36) L8 AR-1262-1	7.755	6.799	8670603	1083401	35.323	11.021 #
37) L8 AR-1262-2	8.372	7.093	6863774	196057	10.876	1.249 #
38) L8 AR-1262-3	8.687	7.621	597149	1876100	1.358	15.415 #
39) L8 AR-1262-4	8.770	7.685	2139535	772349	6.432	3.270 #
41) L9 AR-1268-1	8.687	7.621	597149	1876100	0.804	5.191 #
42) L9 AR-1268-2	8.770	7.685	2139535	772349	3.180	2.363 #

Data Path : Z:\pestpcbsrv\HPCHEM1\ECD\_0\Data\P0091624\  
 Data File : P0106587.D  
 Signal(s) : Signal #1: ECD1A.ch Signal #2: ECD2B.ch  
 Acq On : 16 Sep 2024 13:26  
 Operator : YP/AJ  
 Sample : P4002-03  
 Misc :  
 ALS Vial : 15 Sample Multiplier: 1

Instrument :  
 ECD\_0  
 ClientSampleId :  
 TP-2

Integration File signal 1: autoint1.e  
 Integration File signal 2: autoint2.e  
 Quant Time: Sep 17 02:02:24 2024  
 Quant Method : Z:\pestpcbsrv\HPCHEM1\ECD\_0\methods\P0090924.M  
 Quant Title : GC EXTRACTABLES  
 QLast Update : Tue Sep 10 09:57:51 2024  
 Response via : Initial Calibration  
 Integrator: ChemStation

Volume Inj. : 2 µl  
 Signal #1 Phase : ZB-MR1 Signal #2 Phase: ZB-MR2  
 Signal #1 Info : 30Mx0.32mmx 0.50µ Signal #2 Info : 30M x 0.32mm x 0.25µm

	Compound	RT#1	RT#2	Resp#1	Resp#2	ng/ml	ng/ml
45)	L9 AR-1268-5	9.814f	8.478	2046830	868206	1.111	1.032

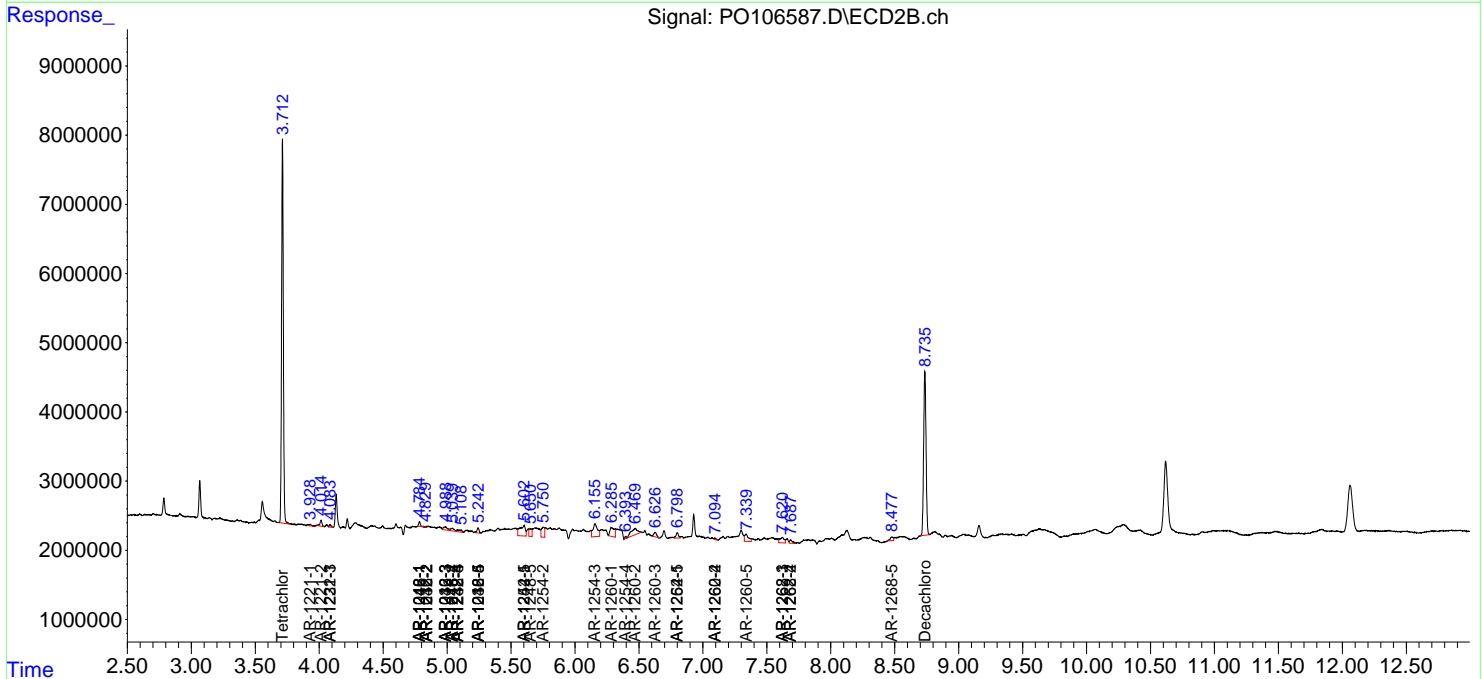
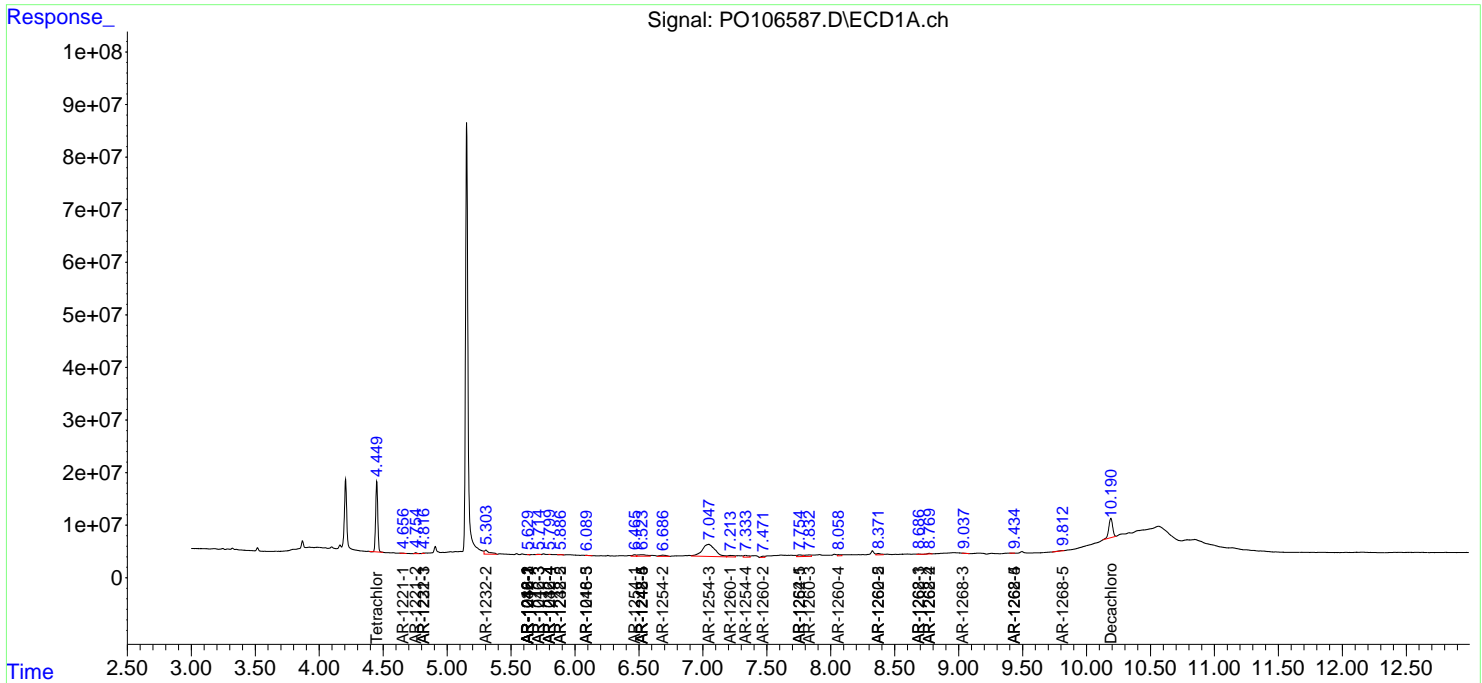
(f)=RT Delta > 1/2 Window (#)=Amounts differ by > 25% (m)=manual int.

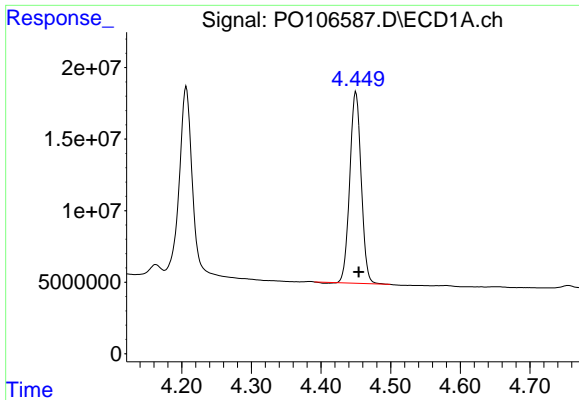
Data Path : Z:\pestpcbsrv\HPCHEM1\ECD\_O\Data\PO091624\  
 Data File : PO106587.D  
 Signal(s) : Signal #1: ECD1A.ch Signal #2: ECD2B.ch  
 Acq On : 16 Sep 2024 13:26  
 Operator : YP/AJ  
 Sample : P4002-03  
 Misc :  
 ALS Vial : 15 Sample Multiplier: 1

Instrument :  
 ECD\_O  
 ClientSampleId :  
 TP-2

Integration File signal 1: autoint1.e  
 Integration File signal 2: autoint2.e  
 Quant Time: Sep 17 02:02:24 2024  
 Quant Method : Z:\pestpcbsrv\HPCHEM1\ECD\_O\methods\PO090924.M  
 Quant Title : GC EXTRACTABLES  
 QLast Update : Tue Sep 10 09:57:51 2024  
 Response via : Initial Calibration  
 Integrator: ChemStation

Volume Inj. : 2 µl  
 Signal #1 Phase : ZB-MR1 Signal #2 Phase: ZB-MR2  
 Signal #1 Info : 30Mx0.32mmx 0.50µ Signal #2 Info : 30M x 0.32mm x 0.25µm

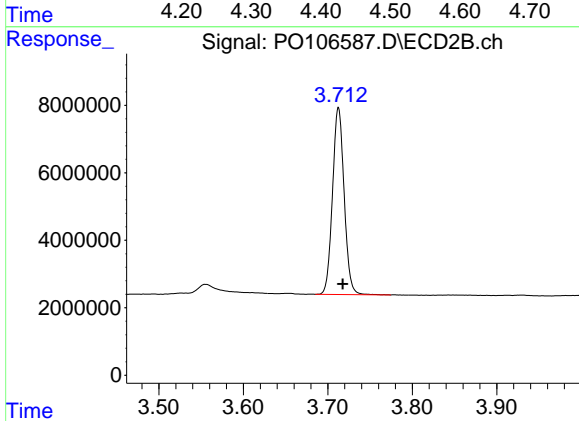




#1 Tetrachloro-m-xylene

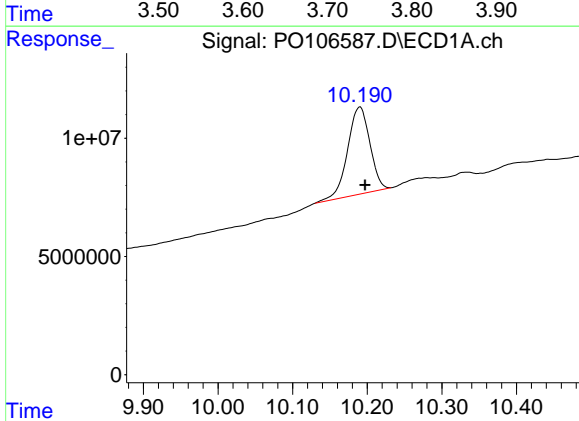
R.T.: 4.450 min  
 Delta R.T.: -0.004 min  
 Response: 152155858  
 Conc: 20.28 ng/ml

Instrument :  
 ECD\_O  
 ClientSampleId :  
 TP-2



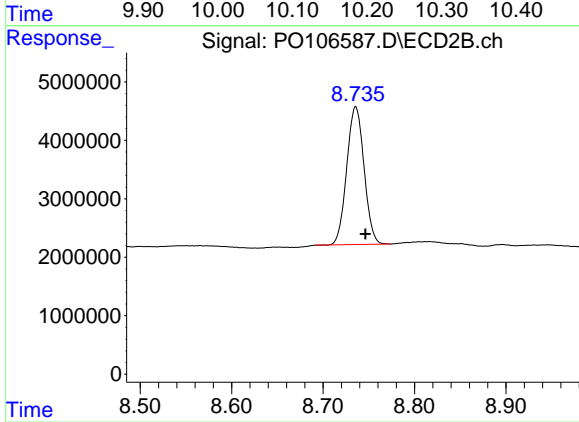
#1 Tetrachloro-m-xylene

R.T.: 3.713 min  
 Delta R.T.: -0.005 min  
 Response: 53060066  
 Conc: 19.86 ng/ml



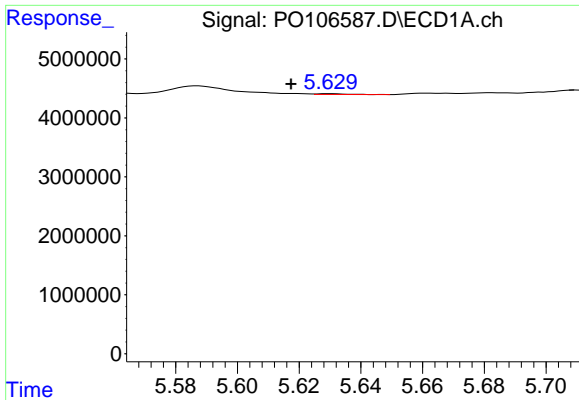
#2 Decachlorobiphenyl

R.T.: 10.191 min  
 Delta R.T.: -0.007 min  
 Response: 76552857  
 Conc: 15.49 ng/ml



#2 Decachlorobiphenyl

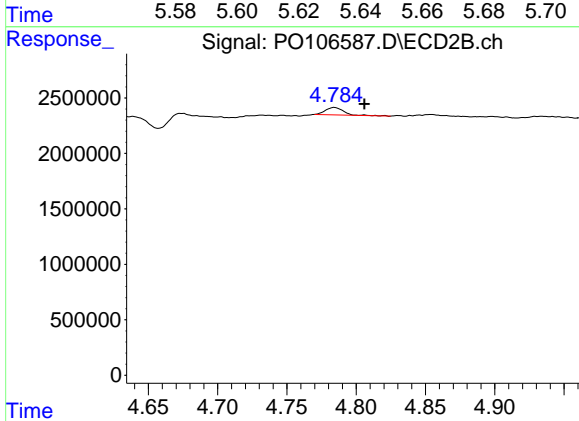
R.T.: 8.736 min  
 Delta R.T.: -0.011 min  
 Response: 31044827  
 Conc: 15.52 ng/ml



#3 AR-1016-1

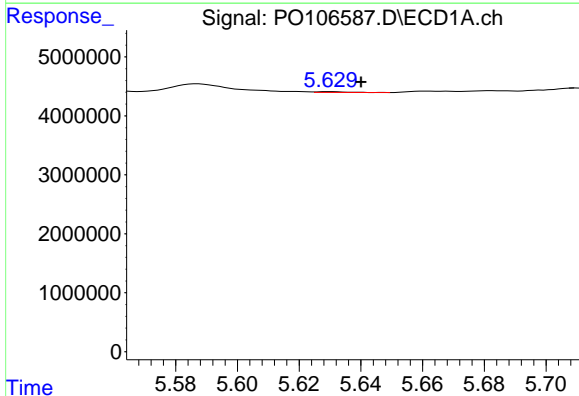
R.T.: 5.630 min  
 Delta R.T.: 0.013 min  
 Response: 77953  
 Conc: 0.31 ng/ml

Instrument :  
 ECD\_O  
 ClientSampleId :  
 TP-2



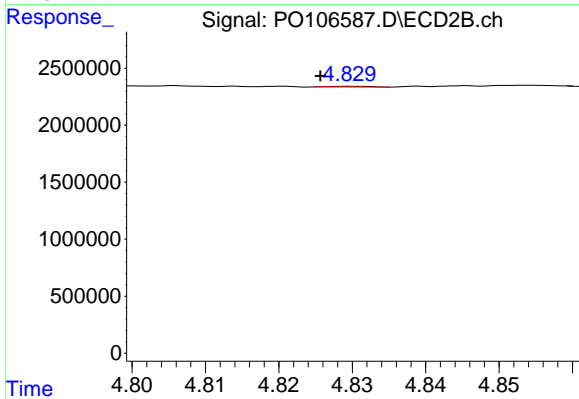
#3 AR-1016-1

R.T.: 4.784 min  
 Delta R.T.: -0.022 min  
 Response: 601687  
 Conc: 6.32 ng/ml



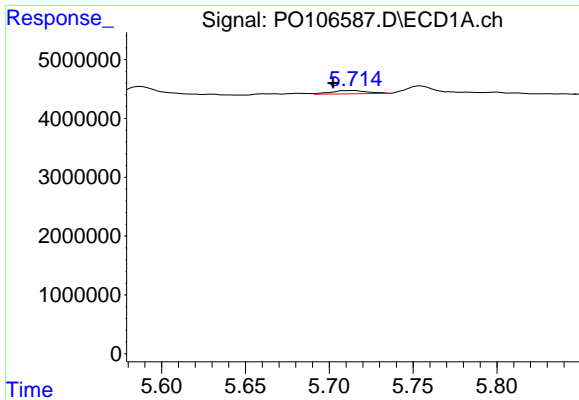
#4 AR-1016-2

R.T.: 5.630 min  
 Delta R.T.: -0.010 min  
 Response: 77953  
 Conc: 0.22 ng/ml



#4 AR-1016-2

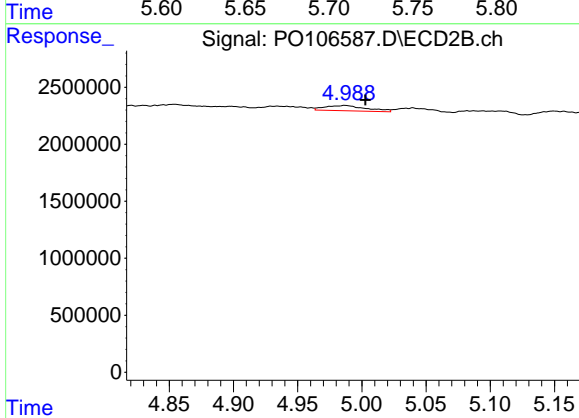
R.T.: 4.830 min  
 Delta R.T.: 0.005 min  
 Response: 22770  
 Conc: 0.18 ng/ml



#5 AR-1016-3

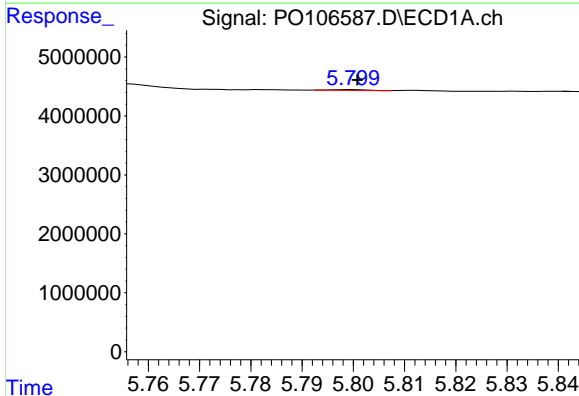
R.T.: 5.714 min  
 Delta R.T.: 0.012 min  
 Response: 838282  
 Conc: 3.85 ng/ml

Instrument :  
 ECD\_O  
 ClientSampleId :  
 TP-2



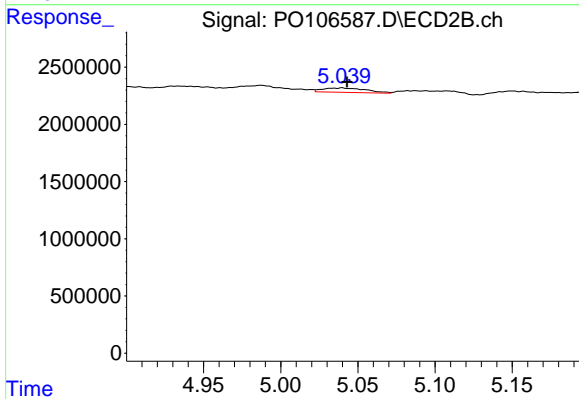
#5 AR-1016-3

R.T.: 4.987 min  
 Delta R.T.: -0.016 min  
 Response: 1027132  
 Conc: 14.89 ng/ml



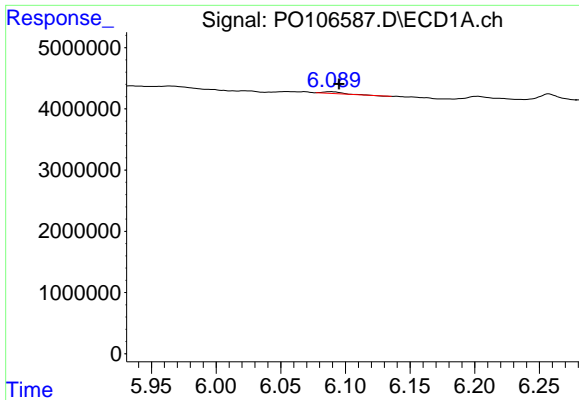
#6 AR-1016-4

R.T.: 5.800 min  
 Delta R.T.: 0.000 min  
 Response: 68454  
 Conc: 0.39 ng/ml



#6 AR-1016-4

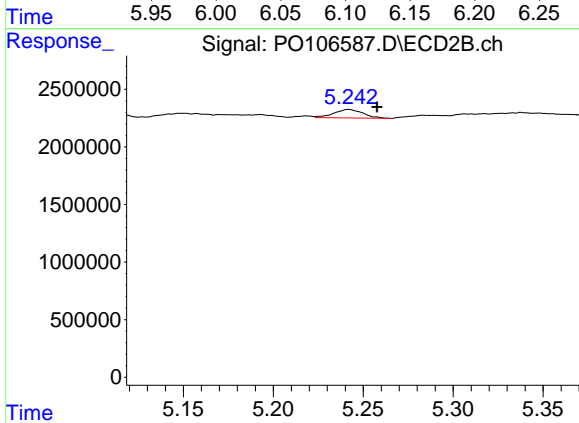
R.T.: 5.040 min  
 Delta R.T.: -0.003 min  
 Response: 729277  
 Conc: 13.73 ng/ml



#7 AR-1016-5

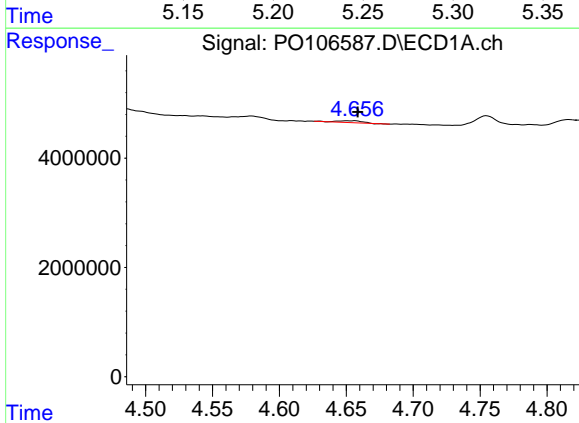
R.T.: 6.089 min  
 Delta R.T.: -0.006 min  
 Response: 304486  
 Conc: 1.76 ng/ml

Instrument :  
 ECD\_O  
 ClientSampleId :  
 TP-2



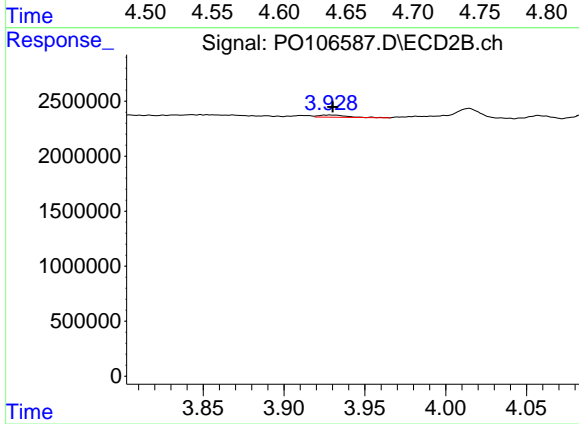
#7 AR-1016-5

R.T.: 5.242 min  
 Delta R.T.: -0.016 min  
 Response: 825990  
 Conc: 11.56 ng/ml



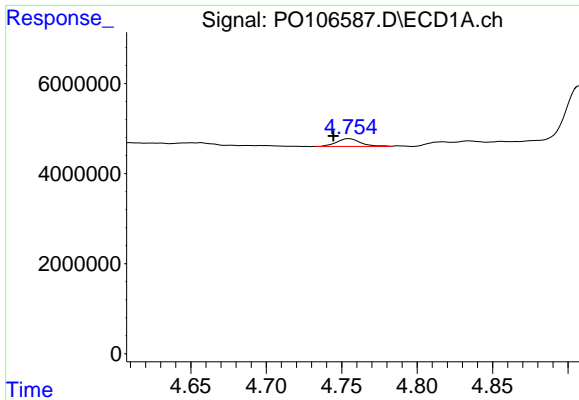
#8 AR-1221-1

R.T.: 4.656 min  
 Delta R.T.: -0.002 min  
 Response: 442160  
 Conc: 4.79 ng/ml



#8 AR-1221-1

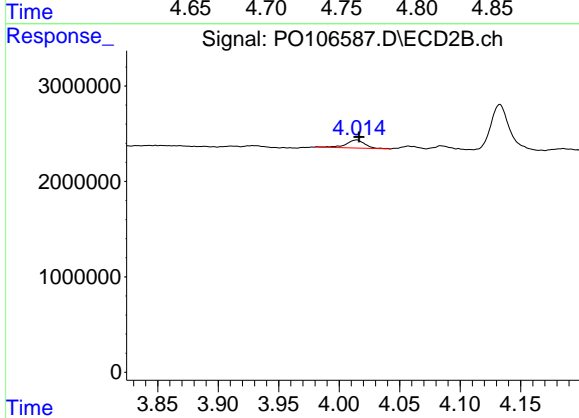
R.T.: 3.929 min  
 Delta R.T.: -0.002 min  
 Response: 233985  
 Conc: 7.74 ng/ml



#9 AR-1221-2

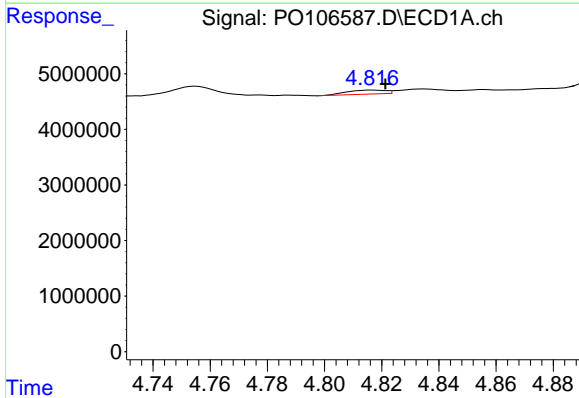
R.T.: 4.755 min  
 Delta R.T.: 0.010 min  
 Response: 1929357  
 Conc: 27.23 ng/ml

Instrument :  
 ECD\_O  
 ClientSampleId :  
 TP-2



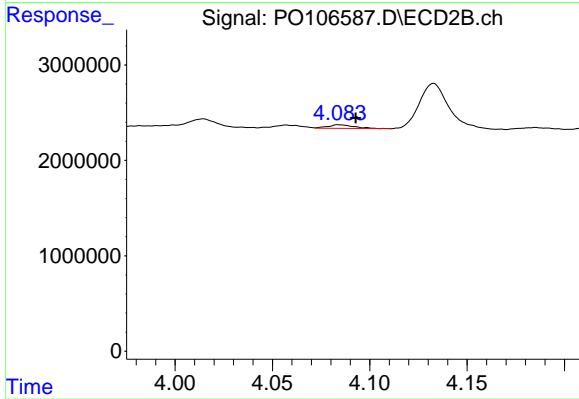
#9 AR-1221-2

R.T.: 4.014 min  
 Delta R.T.: -0.002 min  
 Response: 935262  
 Conc: 41.32 ng/ml



#10 AR-1221-3

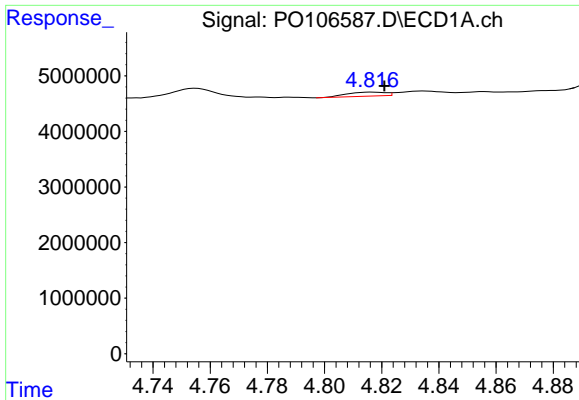
R.T.: 4.817 min  
 Delta R.T.: -0.005 min  
 Response: 677901  
 Conc: 3.35 ng/ml



#10 AR-1221-3

R.T.: 4.084 min  
 Delta R.T.: -0.008 min  
 Response: 351469  
 Conc: 4.95 ng/ml

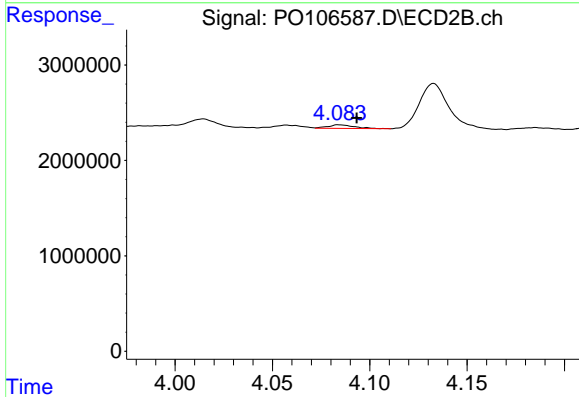




#11 AR-1232-1

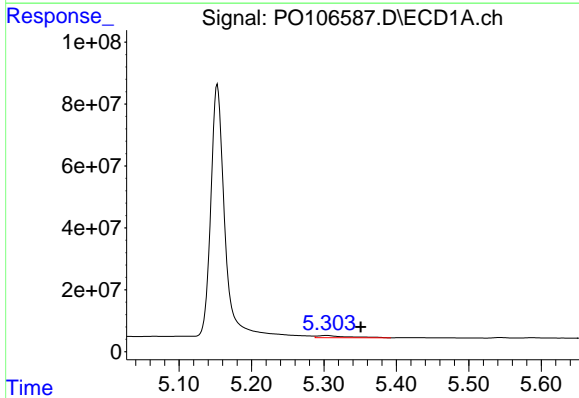
R.T.: 4.817 min  
 Delta R.T.: -0.004 min  
 Response: 677901  
 Conc: 3.88 ng/ml

Instrument :  
 ECD\_O  
 ClientSampleId :  
 TP-2



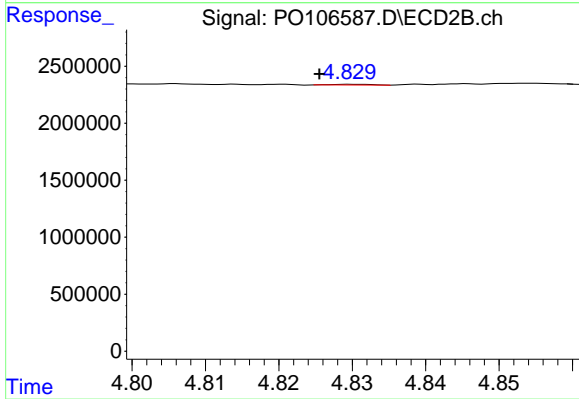
#11 AR-1232-1

R.T.: 4.084 min  
 Delta R.T.: -0.009 min  
 Response: 351469  
 Conc: 5.82 ng/ml



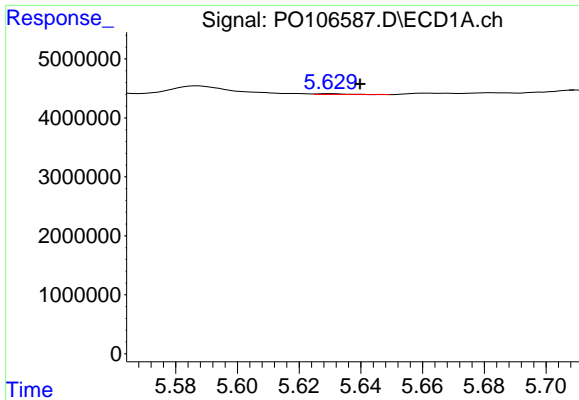
#12 AR-1232-2

R.T.: 5.304 min  
 Delta R.T.: -0.047 min  
 Response: 22106629  
 Conc: 236.99 ng/ml



#12 AR-1232-2

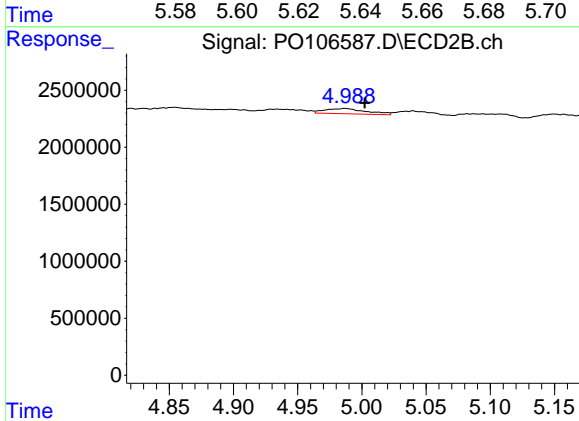
R.T.: 4.830 min  
 Delta R.T.: 0.005 min  
 Response: 22770  
 Conc: 0.39 ng/ml



#13 AR-1232-3

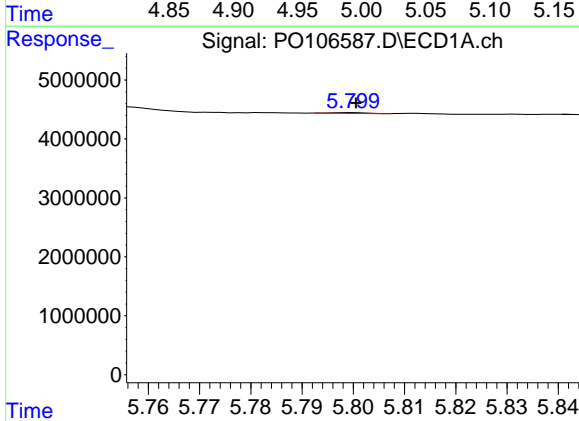
R.T.: 5.630 min  
 Delta R.T.: -0.010 min  
 Response: 77953  
 Conc: 0.48 ng/ml

Instrument :  
 ECD\_O  
 ClientSampleId :  
 TP-2



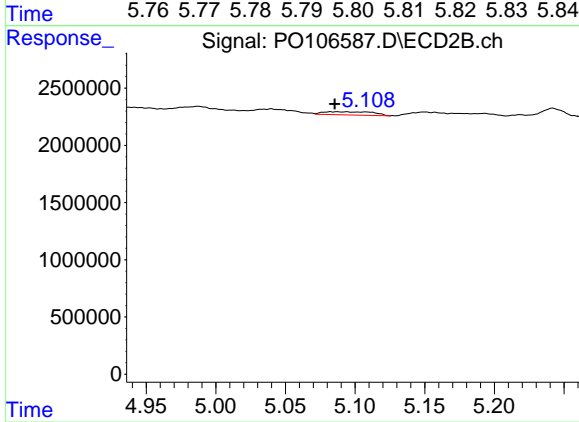
#13 AR-1232-3

R.T.: 4.987 min  
 Delta R.T.: -0.015 min  
 Response: 1027132  
 Conc: 32.97 ng/ml



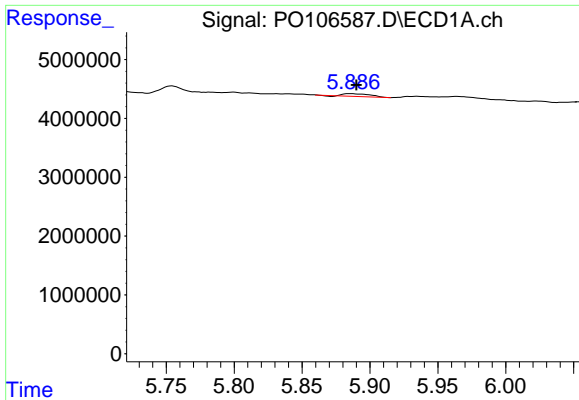
#14 AR-1232-4

R.T.: 5.800 min  
 Delta R.T.: 0.000 min  
 Response: 68454  
 Conc: 0.83 ng/ml



#14 AR-1232-4

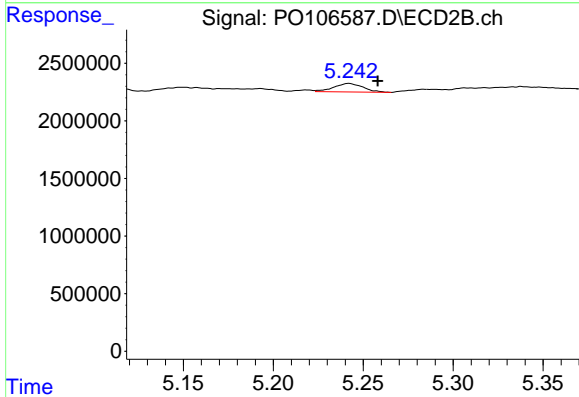
R.T.: 5.082 min  
 Delta R.T.: -0.003 min  
 Response: 681657  
 Conc: 24.94 ng/ml



#15 AR-1232-5

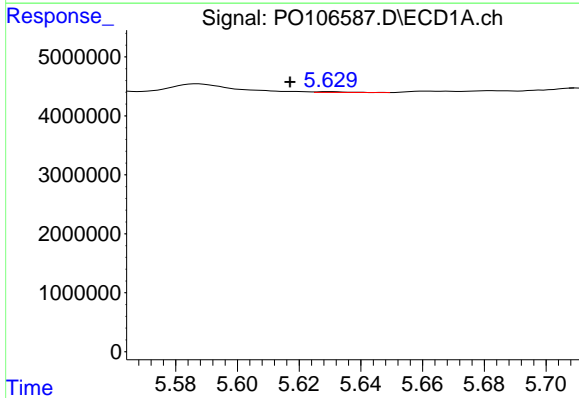
R.T.: 5.886 min  
 Delta R.T.: -0.004 min  
 Response: 606361  
 Conc: 9.55 ng/ml

Instrument :  
 ECD\_O  
 ClientSampleId :  
 TP-2



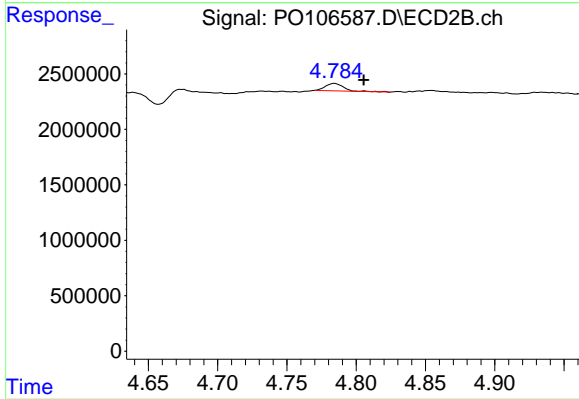
#15 AR-1232-5

R.T.: 5.242 min  
 Delta R.T.: -0.016 min  
 Response: 825990  
 Conc: 28.18 ng/ml



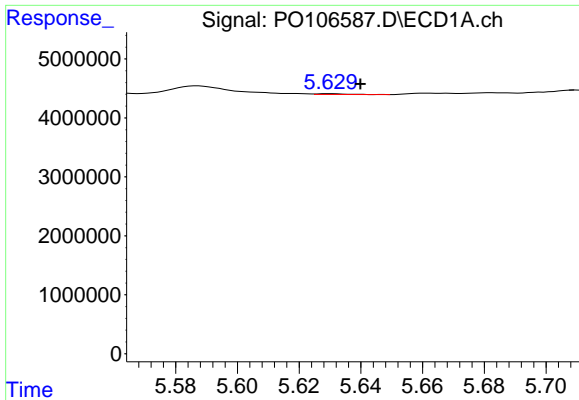
#16 AR-1242-1

R.T.: 5.630 min  
 Delta R.T.: 0.013 min  
 Response: 77953  
 Conc: 0.39 ng/ml



#16 AR-1242-1

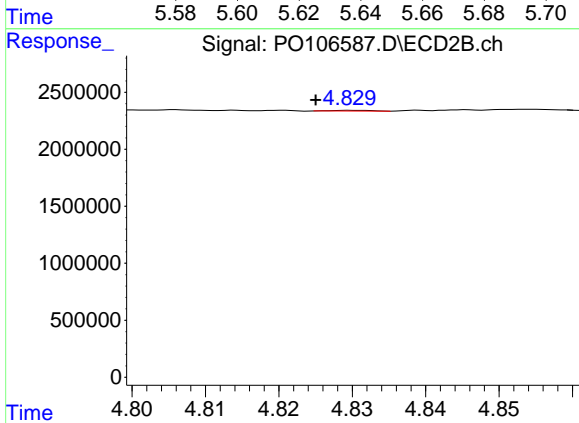
R.T.: 4.784 min  
 Delta R.T.: -0.021 min  
 Response: 601687  
 Conc: 8.15 ng/ml



#17 AR-1242-2

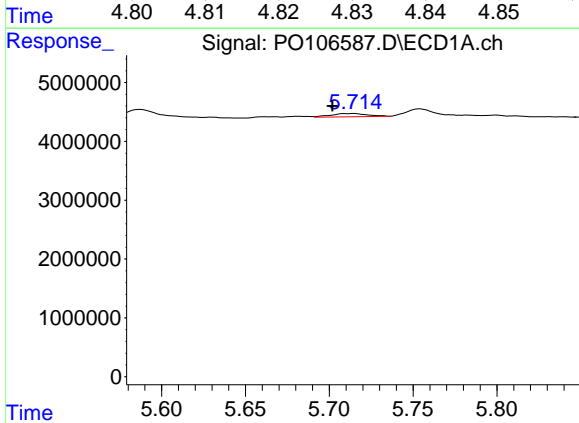
R.T.: 5.630 min  
 Delta R.T.: -0.010 min  
 Response: 77953  
 Conc: 0.28 ng/ml

Instrument :  
 ECD\_O  
 ClientSampleId :  
 TP-2



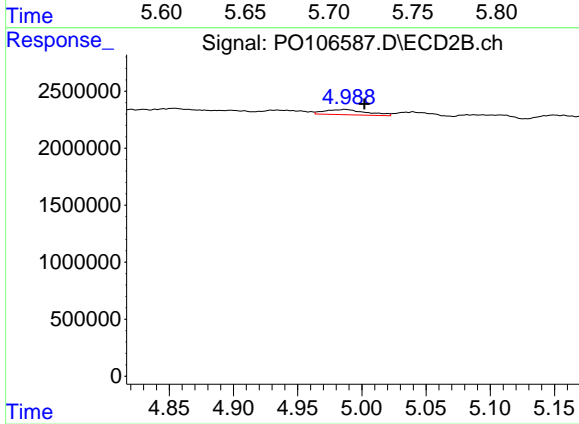
#17 AR-1242-2

R.T.: 4.830 min  
 Delta R.T.: 0.005 min  
 Response: 22770  
 Conc: 0.23 ng/ml



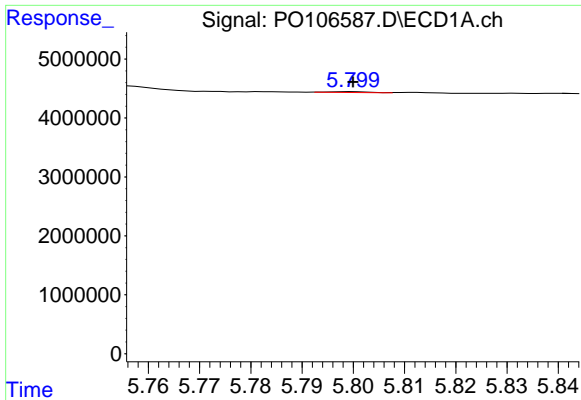
#18 AR-1242-3

R.T.: 5.714 min  
 Delta R.T.: 0.012 min  
 Response: 838282  
 Conc: 4.89 ng/ml



#18 AR-1242-3

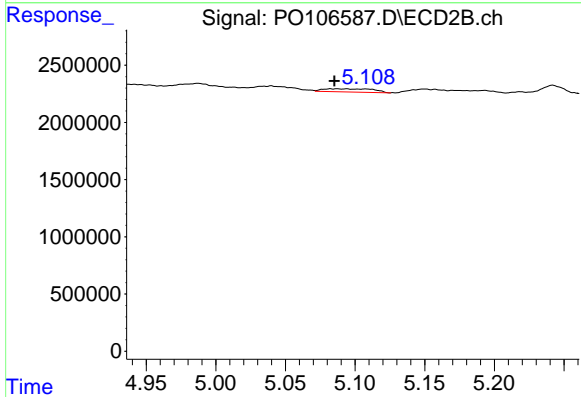
R.T.: 4.987 min  
 Delta R.T.: -0.015 min  
 Response: 1027132  
 Conc: 19.15 ng/ml



#19 AR-1242-4

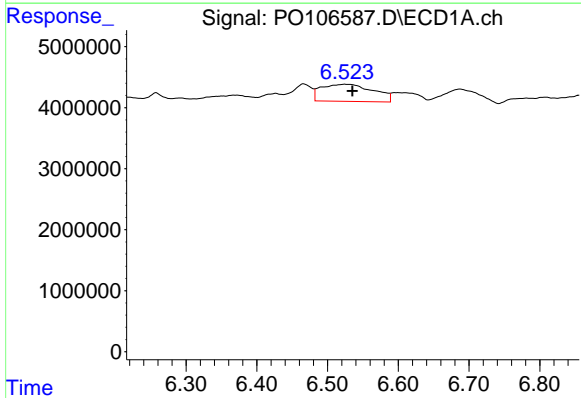
R.T.: 5.800 min  
 Delta R.T.: 0.000 min  
 Response: 68454  
 Conc: 0.49 ng/ml

Instrument :  
 ECD\_O  
 ClientSampleId :  
 TP-2



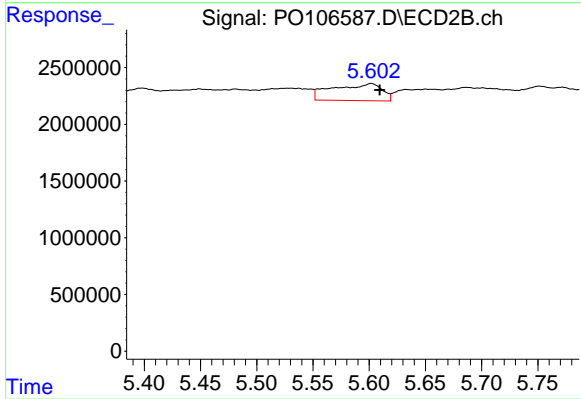
#19 AR-1242-4

R.T.: 5.082 min  
 Delta R.T.: -0.003 min  
 Response: 681657  
 Conc: 12.85 ng/ml



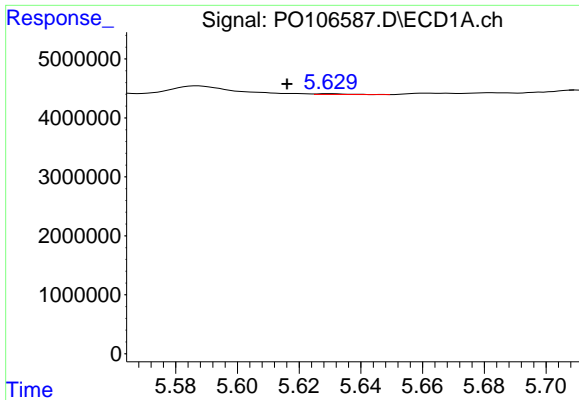
#20 AR-1242-5

R.T.: 6.524 min  
 Delta R.T.: -0.011 min  
 Response: 14441617  
 Conc: 103.84 ng/ml



#20 AR-1242-5

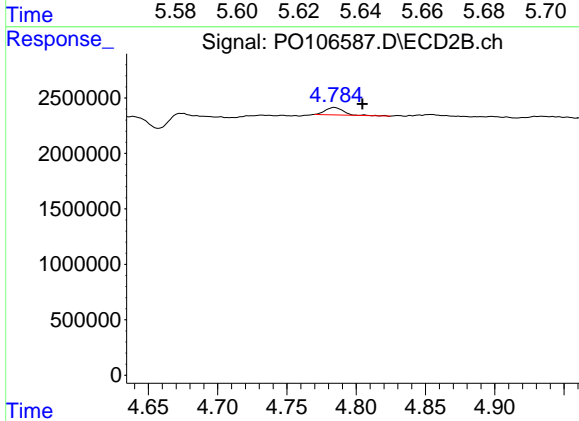
R.T.: 5.602 min  
 Delta R.T.: -0.007 min  
 Response: 4581355  
 Conc: 65.60 ng/ml



#21 AR-1248-1

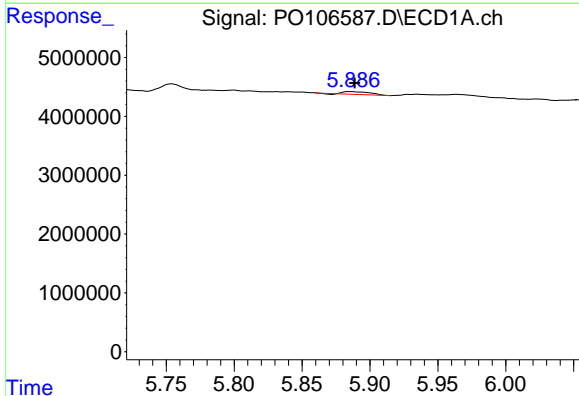
R.T.: 5.630 min  
 Delta R.T.: 0.014 min  
 Response: 77953  
 Conc: 0.49 ng/ml

Instrument :  
 ECD\_O  
 ClientSampleId :  
 TP-2



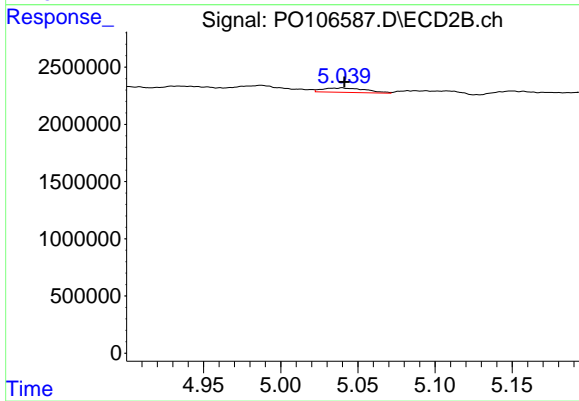
#21 AR-1248-1

R.T.: 4.784 min  
 Delta R.T.: -0.020 min  
 Response: 601687  
 Conc: 10.40 ng/ml



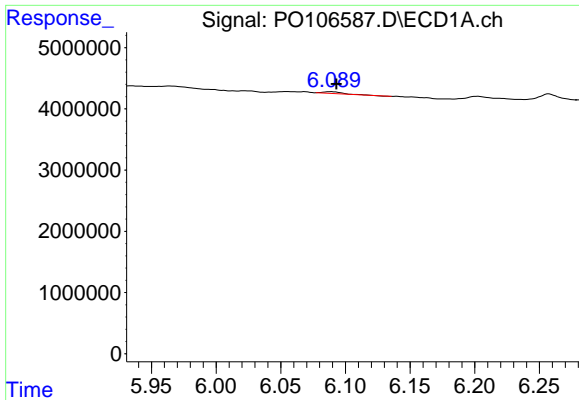
#22 AR-1248-2

R.T.: 5.886 min  
 Delta R.T.: -0.003 min  
 Response: 606361  
 Conc: 2.80 ng/ml



#22 AR-1248-2

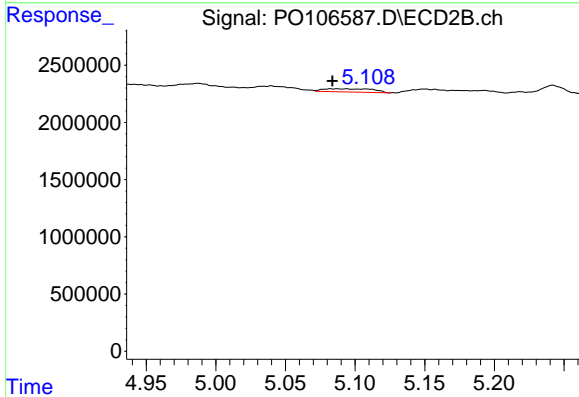
R.T.: 5.040 min  
 Delta R.T.: -0.002 min  
 Response: 729277  
 Conc: 9.33 ng/ml



#23 AR-1248-3

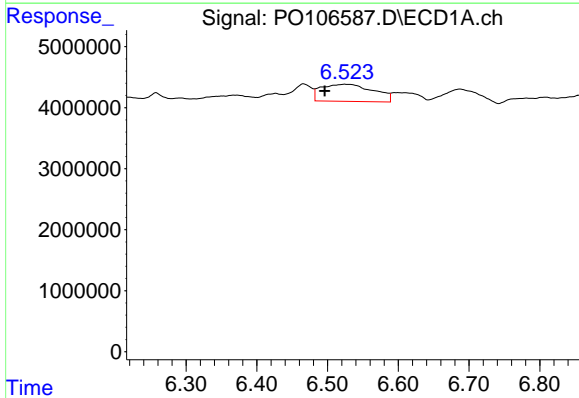
R.T.: 6.089 min  
 Delta R.T.: -0.004 min  
 Response: 304486  
 Conc: 1.28 ng/ml

Instrument :  
 ECD\_O  
 ClientSampleId :  
 TP-2



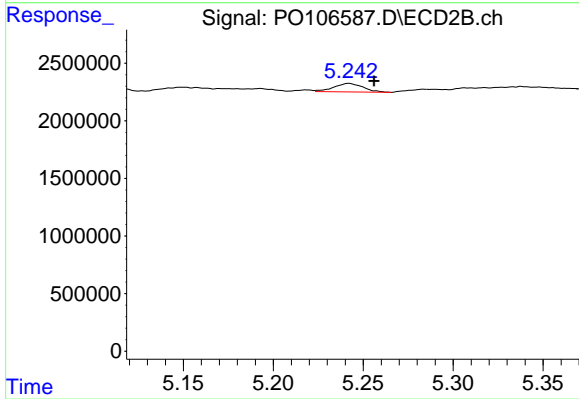
#23 AR-1248-3

R.T.: 5.082 min  
 Delta R.T.: -0.002 min  
 Response: 681657  
 Conc: 8.29 ng/ml



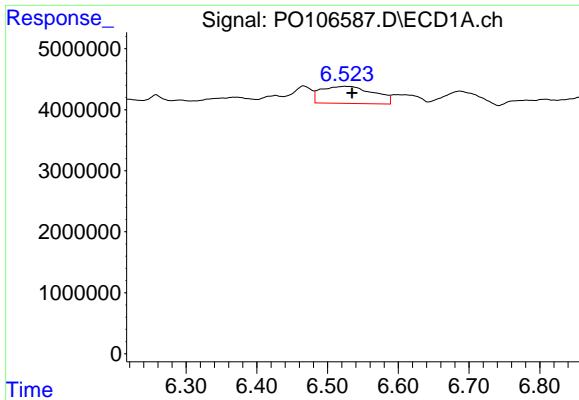
#24 AR-1248-4

R.T.: 6.524 min  
 Delta R.T.: 0.028 min  
 Response: 14441617  
 Conc: 55.00 ng/ml



#24 AR-1248-4

R.T.: 5.242 min  
 Delta R.T.: -0.014 min  
 Response: 825990  
 Conc: 8.41 ng/ml

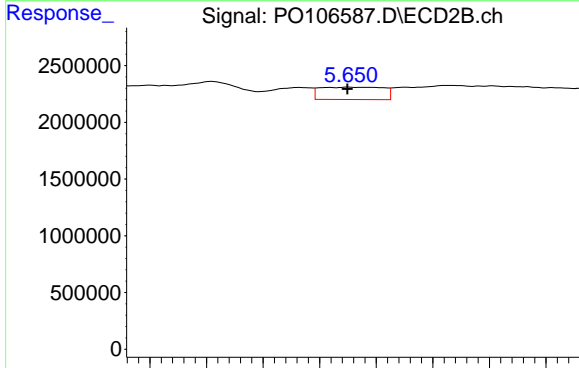


#25 AR-1248-5

R.T.: 6.524 min  
 Delta R.T.: -0.010 min  
 Response: 14441617  
 Conc: 57.59 ng/ml

Instrument :  
 ECD\_O  
 ClientSampleId :  
 TP-2

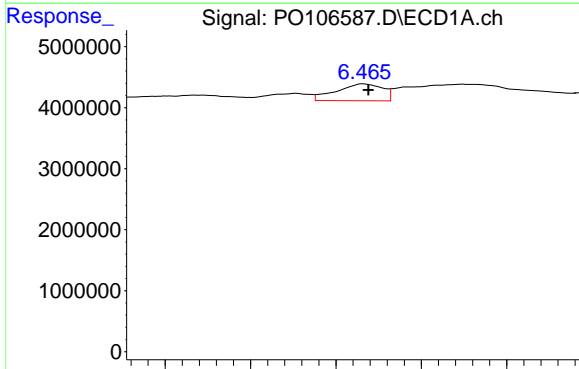
Time 6.30 6.40 6.50 6.60 6.70 6.80



#25 AR-1248-5

R.T.: 5.650 min  
 Delta R.T.: 0.000 min  
 Response: 1692491  
 Conc: 17.47 ng/ml

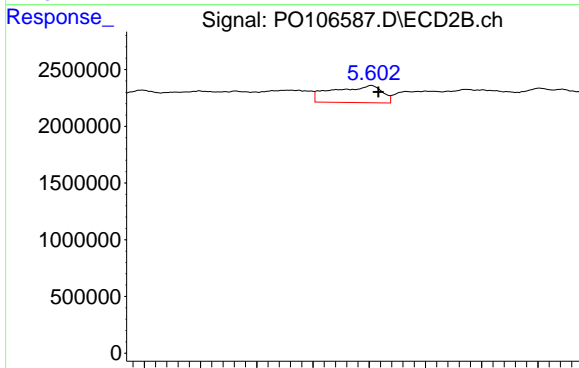
Time 5.58 5.60 5.62 5.64 5.66 5.68 5.70 5.72



#26 AR-1254-1

R.T.: 6.466 min  
 Delta R.T.: -0.003 min  
 Response: 5230872  
 Conc: 20.07 ng/ml

Time 6.35 6.40 6.45 6.50 6.55

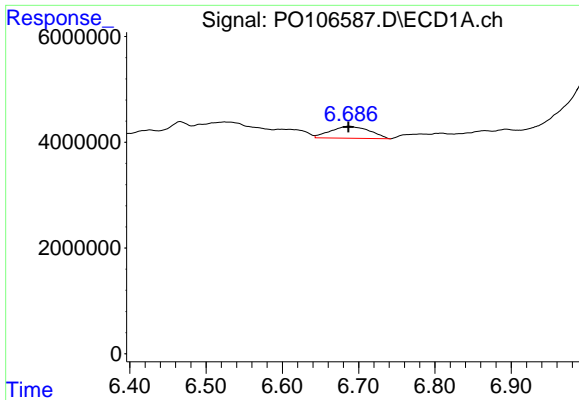


#26 AR-1254-1

R.T.: 5.602 min  
 Delta R.T.: -0.006 min  
 Response: 4581355  
 Conc: 32.52 ng/ml

Time 5.40 5.45 5.50 5.55 5.60 5.65 5.70 5.75

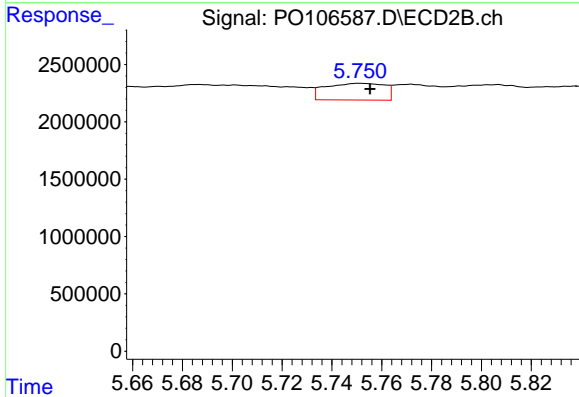




#27 AR-1254-2

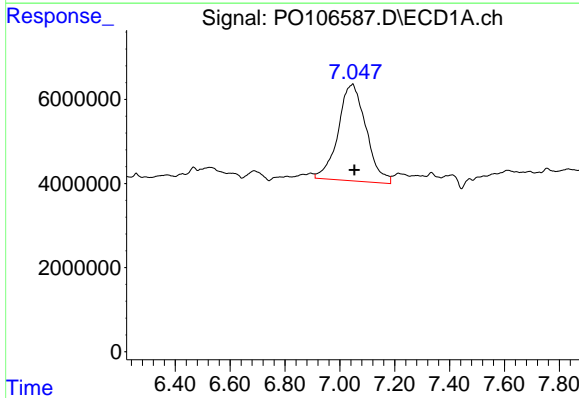
R.T.: 6.687 min  
 Delta R.T.: 0.000 min  
 Response: 8032050  
 Conc: 20.61 ng/ml

Instrument :  
 ECD\_O  
 ClientSampleId :  
 TP-2



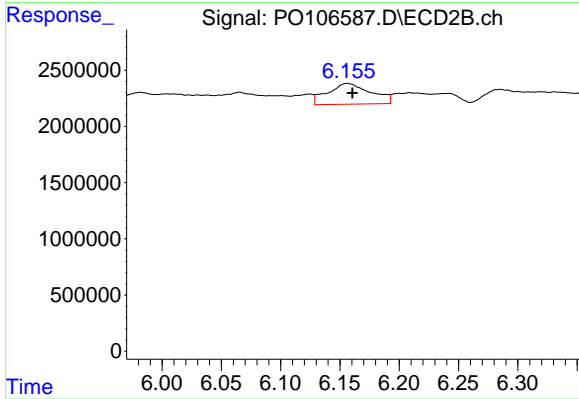
#27 AR-1254-2

R.T.: 5.751 min  
 Delta R.T.: -0.004 min  
 Response: 2404371  
 Conc: 18.87 ng/ml



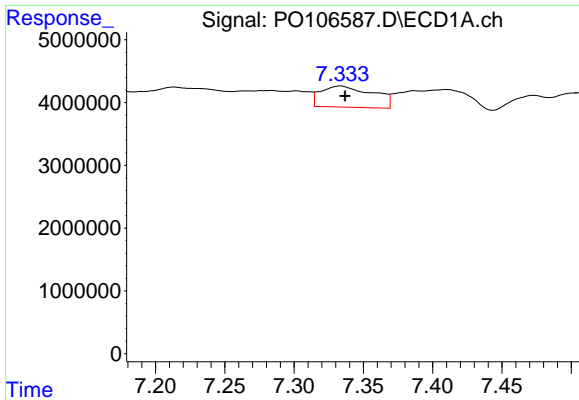
#28 AR-1254-3

R.T.: 7.047 min  
 Delta R.T.: -0.005 min  
 Response: 162127850  
 Conc: 415.82 ng/ml



#28 AR-1254-3

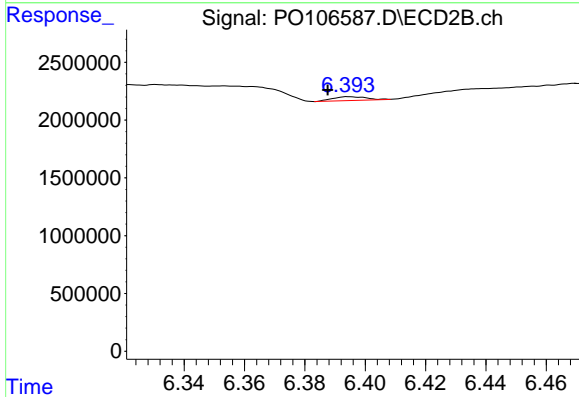
R.T.: 6.156 min  
 Delta R.T.: -0.005 min  
 Response: 4672558  
 Conc: 23.21 ng/ml



#29 AR-1254-4

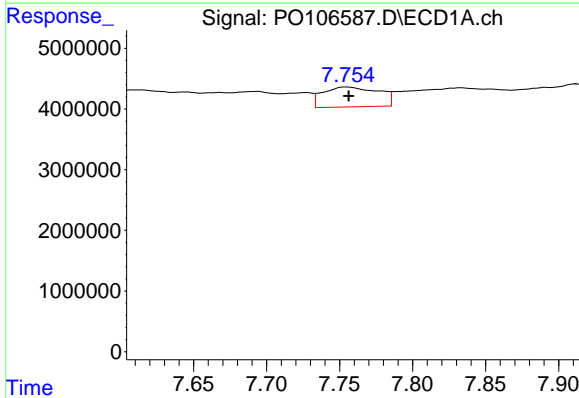
R.T.: 7.334 min  
 Delta R.T.: -0.003 min  
 Response: 8820073  
 Conc: 30.35 ng/ml

Instrument :  
 ECD\_O  
 ClientSampleId :  
 TP-2



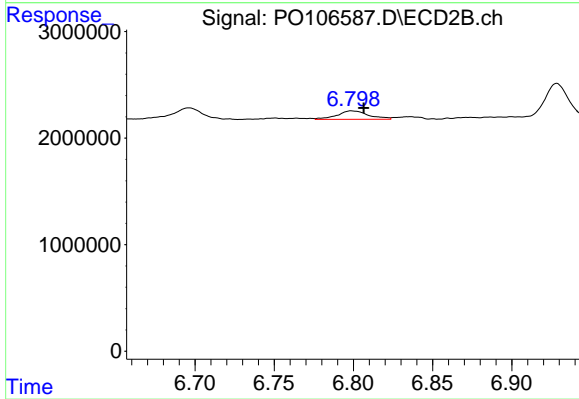
#29 AR-1254-4

R.T.: 6.395 min  
 Delta R.T.: 0.007 min  
 Response: 261435  
 Conc: 2.10 ng/ml



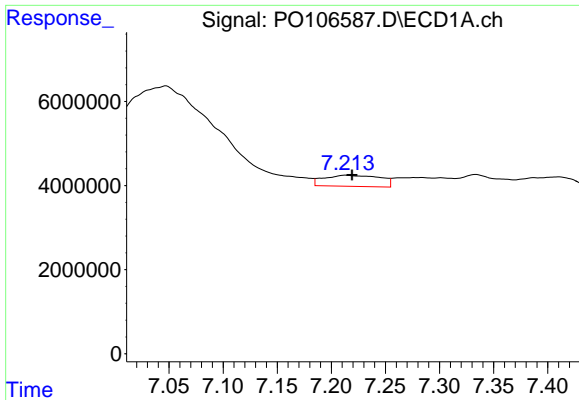
#30 AR-1254-5

R.T.: 7.755 min  
 Delta R.T.: -0.002 min  
 Response: 8670603  
 Conc: 28.49 ng/ml



#30 AR-1254-5

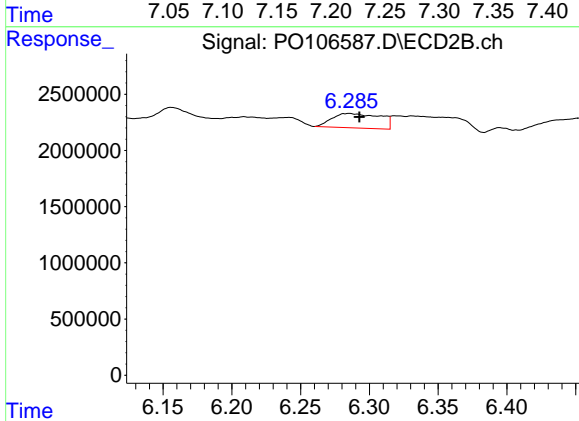
R.T.: 6.799 min  
 Delta R.T.: -0.007 min  
 Response: 1083401  
 Conc: 6.05 ng/ml



#31 AR-1260-1

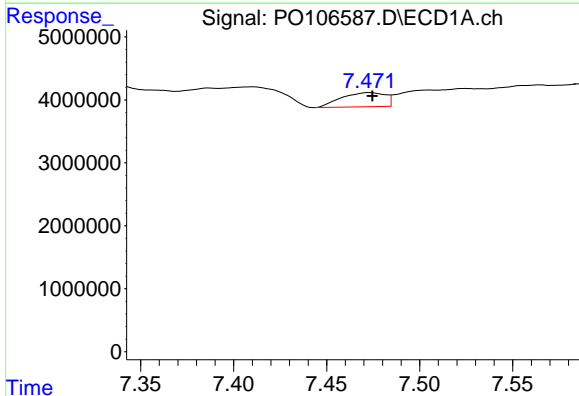
R.T.: 7.213 min  
 Delta R.T.: -0.006 min  
 Response: 9514614  
 Conc: 33.72 ng/ml

Instrument :  
 ECD\_O  
 ClientSampleId :  
 TP-2



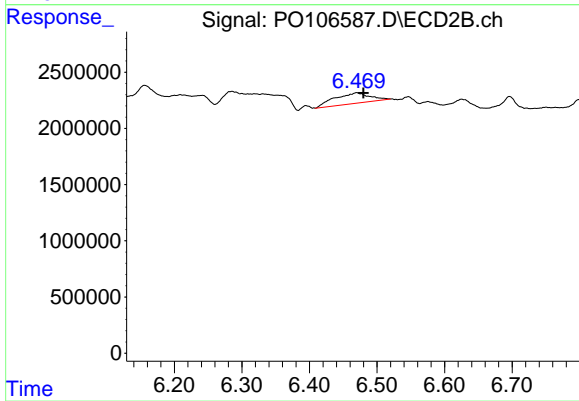
#31 AR-1260-1

R.T.: 6.285 min  
 Delta R.T.: -0.007 min  
 Response: 3140175  
 Conc: 24.28 ng/ml



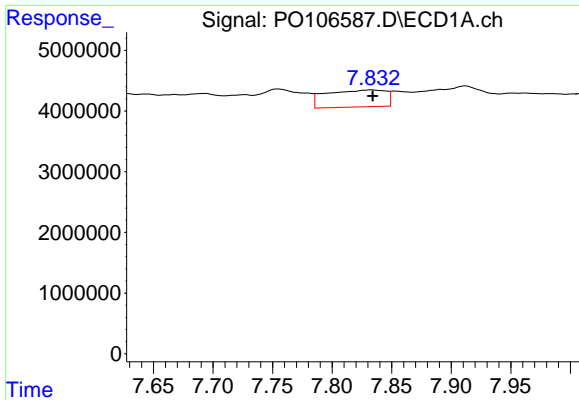
#32 AR-1260-2

R.T.: 7.473 min  
 Delta R.T.: -0.002 min  
 Response: 3683975  
 Conc: 11.04 ng/ml



#32 AR-1260-2

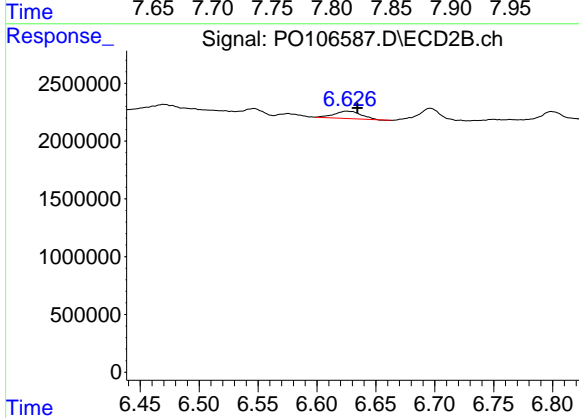
R.T.: 6.470 min  
 Delta R.T.: -0.010 min  
 Response: 3431172  
 Conc: 21.62 ng/ml



#33 AR-1260-3

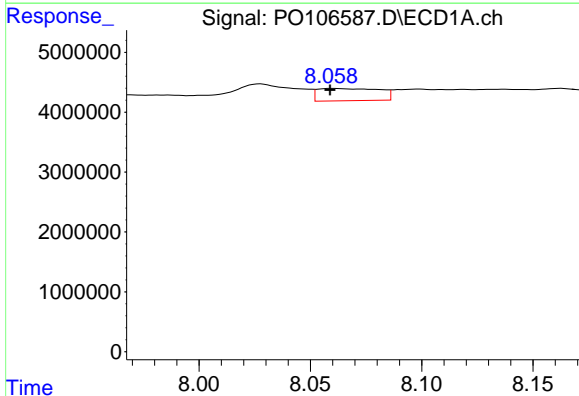
R.T.: 7.833 min  
 Delta R.T.: -0.001 min  
 Response: 9697667  
 Conc: 42.96 ng/ml

Instrument :  
 ECD\_O  
 ClientSampleId :  
 TP-2



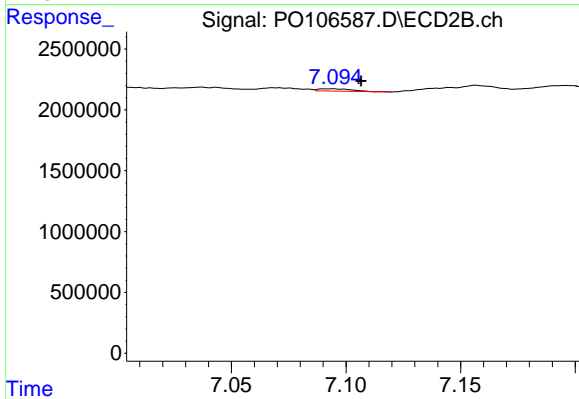
#33 AR-1260-3

R.T.: 6.625 min  
 Delta R.T.: -0.009 min  
 Response: 1038445  
 Conc: 6.73 ng/ml



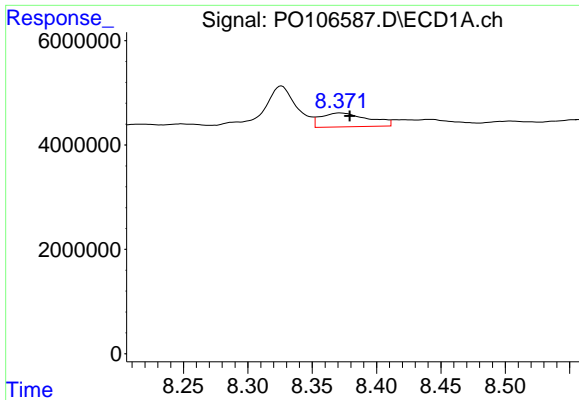
#34 AR-1260-4

R.T.: 8.060 min  
 Delta R.T.: 0.000 min  
 Response: 3953473  
 Conc: 14.29 ng/ml



#34 AR-1260-4

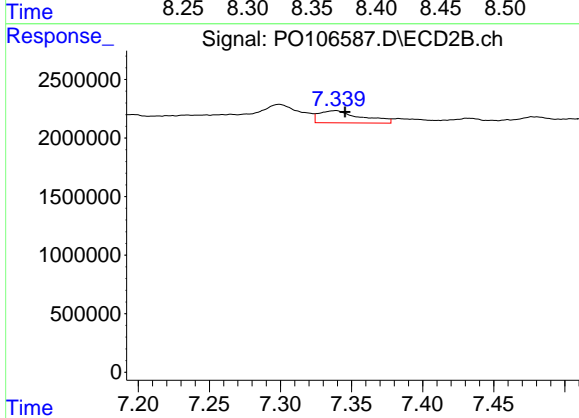
R.T.: 7.093 min  
 Delta R.T.: -0.013 min  
 Response: 196057  
 Conc: 1.84 ng/ml



#35 AR-1260-5

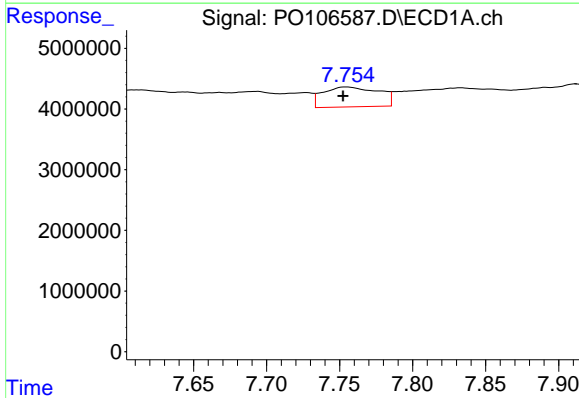
R.T.: 8.372 min  
 Delta R.T.: -0.007 min  
 Response: 6863774  
 Conc: 13.90 ng/ml

Instrument :  
 ECD\_O  
 ClientSampleId :  
 TP-2



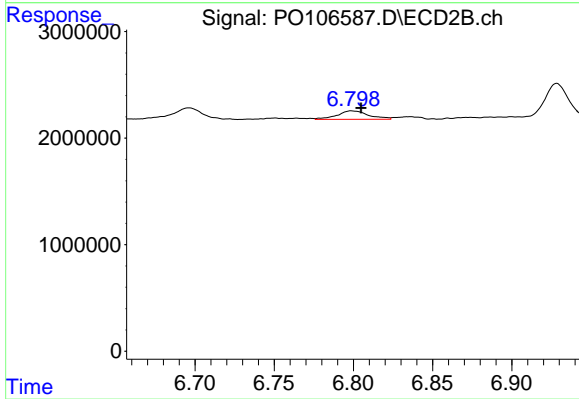
#35 AR-1260-5

R.T.: 7.339 min  
 Delta R.T.: -0.007 min  
 Response: 2126209  
 Conc: 8.27 ng/ml



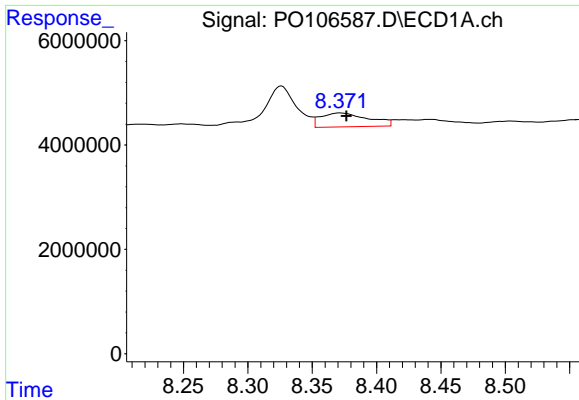
#36 AR-1262-1

R.T.: 7.755 min  
 Delta R.T.: 0.002 min  
 Response: 8670603  
 Conc: 35.32 ng/ml



#36 AR-1262-1

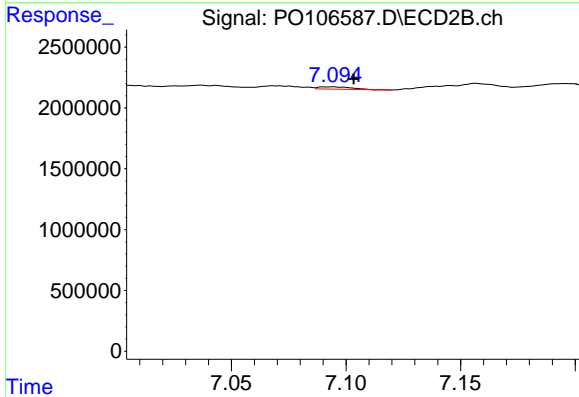
R.T.: 6.799 min  
 Delta R.T.: -0.006 min  
 Response: 1083401  
 Conc: 11.02 ng/ml



#37 AR-1262-2

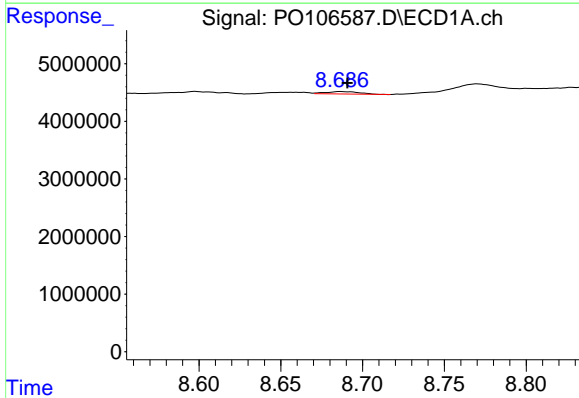
R.T.: 8.372 min  
 Delta R.T.: -0.005 min  
 Response: 6863774  
 Conc: 10.88 ng/ml

Instrument :  
 ECD\_O  
 ClientSampleId :  
 TP-2



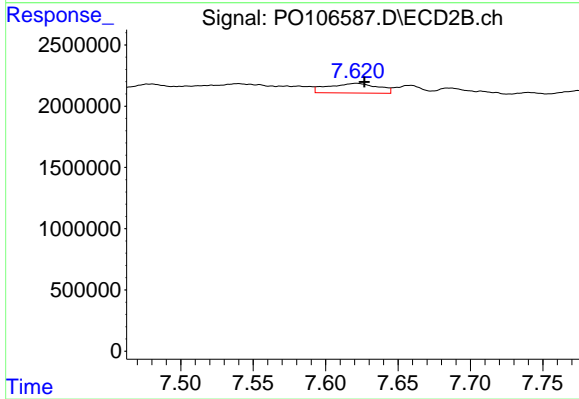
#37 AR-1262-2

R.T.: 7.093 min  
 Delta R.T.: -0.010 min  
 Response: 196057  
 Conc: 1.25 ng/ml



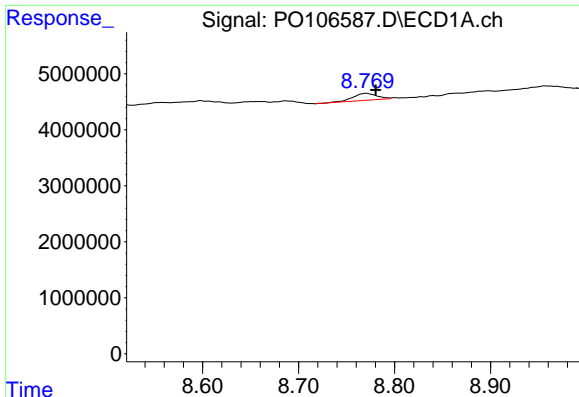
#38 AR-1262-3

R.T.: 8.687 min  
 Delta R.T.: -0.004 min  
 Response: 597149  
 Conc: 1.36 ng/ml



#38 AR-1262-3

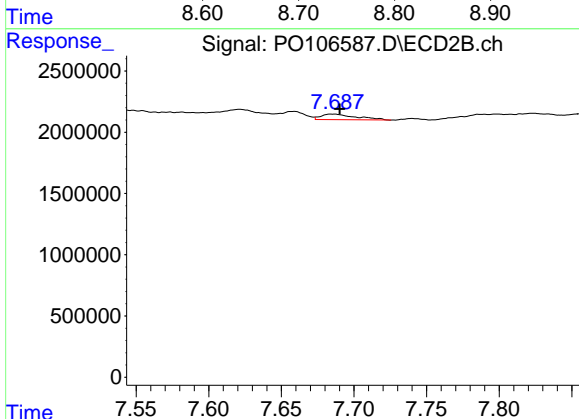
R.T.: 7.621 min  
 Delta R.T.: -0.005 min  
 Response: 1876100  
 Conc: 15.41 ng/ml



#39 AR-1262-4

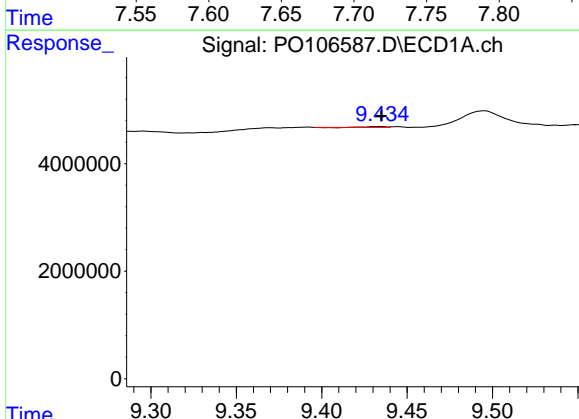
R.T.: 8.770 min  
 Delta R.T.: -0.010 min  
 Response: 2139535  
 Conc: 6.43 ng/ml

Instrument :  
 ECD\_O  
 ClientSampleId :  
 TP-2



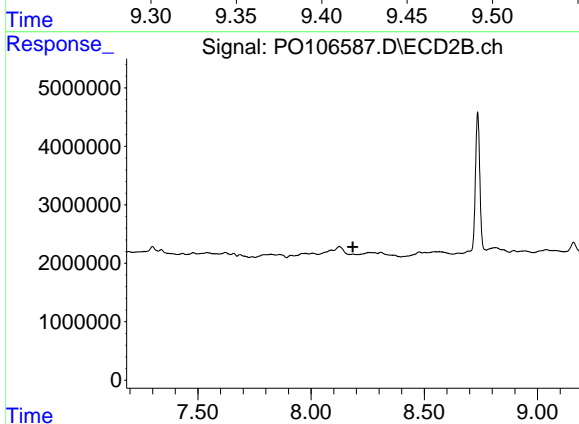
#39 AR-1262-4

R.T.: 7.685 min  
 Delta R.T.: -0.005 min  
 Response: 772349  
 Conc: 3.27 ng/ml



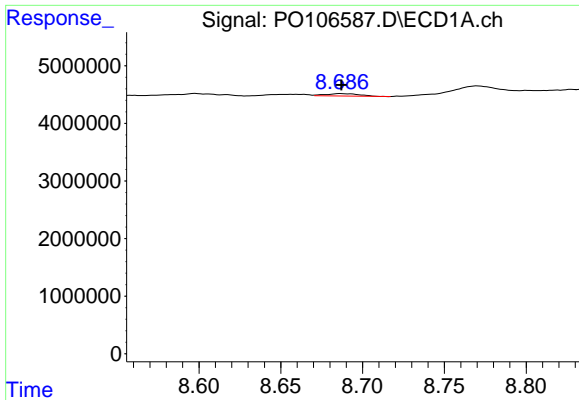
#40 AR-1262-5

R.T.: 9.434 min  
 Delta R.T.: 0.000 min  
 Response: 92004  
 Conc: 0.39 ng/ml



#40 AR-1262-5

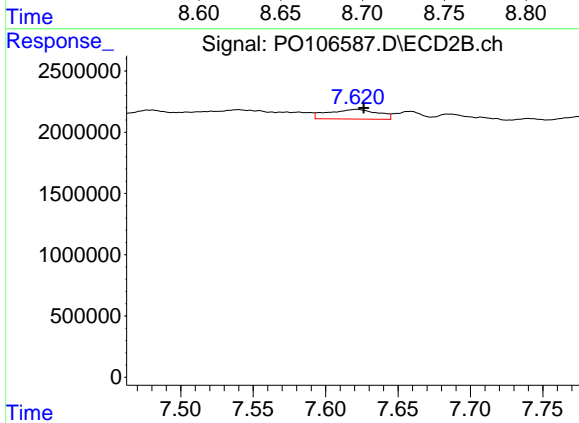
R.T.: 8.185 min  
 Delta R.T.: 0.000 min  
 Response: -156563  
 Conc: N.D.



#41 AR-1268-1

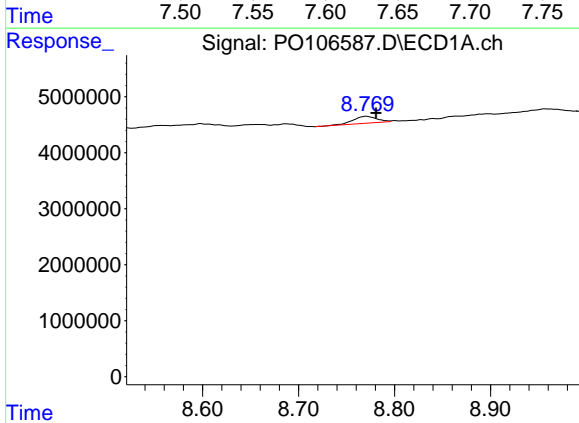
R.T.: 8.687 min  
 Delta R.T.: 0.000 min  
 Response: 597149  
 Conc: 0.80 ng/ml

Instrument :  
 ECD\_O  
 ClientSampleId :  
 TP-2



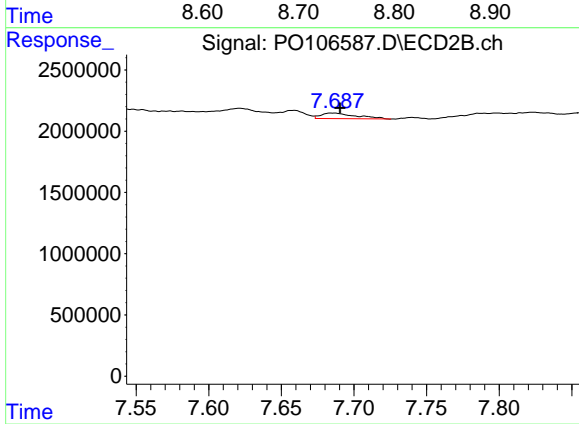
#41 AR-1268-1

R.T.: 7.621 min  
 Delta R.T.: -0.005 min  
 Response: 1876100  
 Conc: 5.19 ng/ml



#42 AR-1268-2

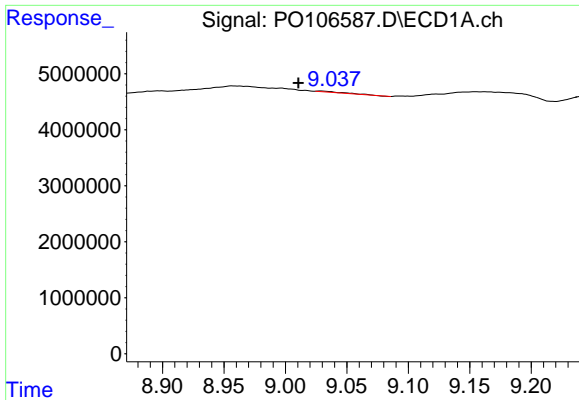
R.T.: 8.770 min  
 Delta R.T.: -0.010 min  
 Response: 2139535  
 Conc: 3.18 ng/ml



#42 AR-1268-2

R.T.: 7.685 min  
 Delta R.T.: -0.005 min  
 Response: 772349  
 Conc: 2.36 ng/ml

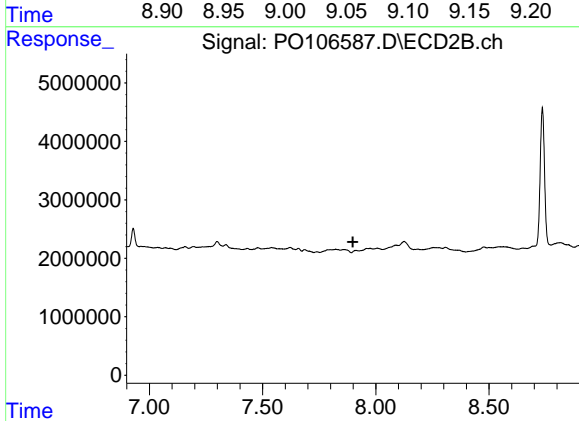




#43 AR-1268-3

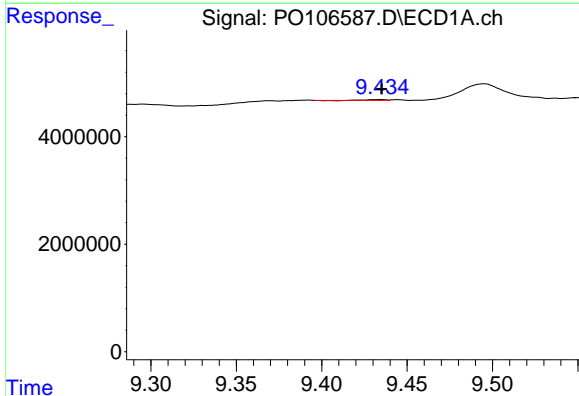
R.T.: 9.029 min  
 Delta R.T.: 0.018 min  
 Response: 267814  
 Conc: 0.47 ng/ml

Instrument :  
 ECD\_O  
 ClientSampleId :  
 TP-2



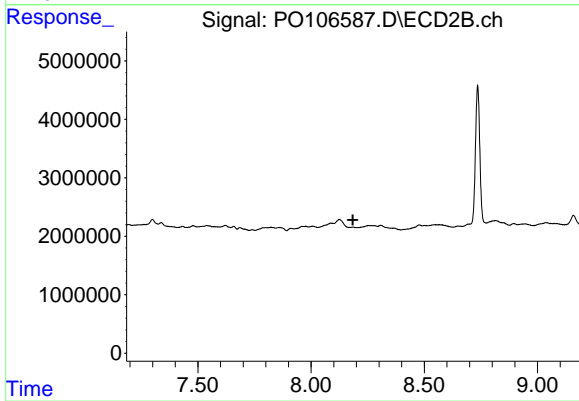
#43 AR-1268-3

R.T.: 7.912 min  
 Delta R.T.: 0.013 min  
 Response: -212281  
 Conc: N.D.



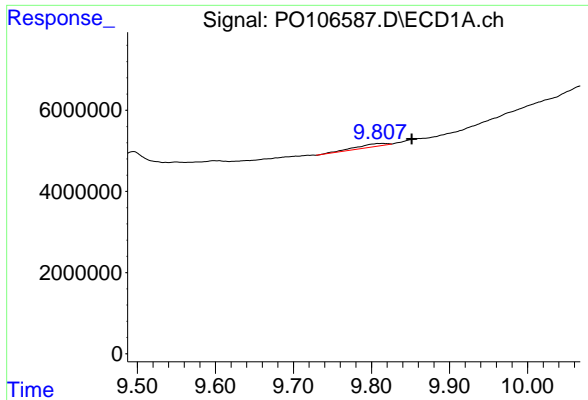
#44 AR-1268-4

R.T.: 9.434 min  
 Delta R.T.: 0.000 min  
 Response: 92004  
 Conc: 0.37 ng/ml



#44 AR-1268-4

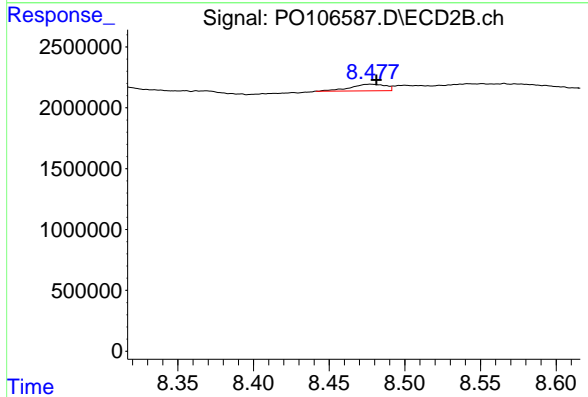
R.T.: 8.185 min  
 Delta R.T.: 0.000 min  
 Response: -156563  
 Conc: N.D.



#45 AR-1268-5

R.T.: 9.814 min  
 Delta R.T.: -0.037 min  
 Response: 2046830  
 Conc: 1.11 ng/ml

Instrument :  
 ECD\_O  
 ClientSampleId :  
 TP-2



#45 AR-1268-5

R.T.: 8.478 min  
 Delta R.T.: -0.004 min  
 Response: 868206  
 Conc: 1.03 ng/ml