

Data Path : Z:\pestpcbsrv\HPCHEM1\ECD_0\Data\P0091718\
 Data File : P0049066.D
 Signal(s) : Signal #1: ECD1A.CH Signal #2: ECD2B.CH
 Acq On : 17 Sep 2018 22:45
 Operator : SM/SJ
 Sample : J4941-04
 Misc :
 ALS Vial : 23 Sample Multiplier: 1

Instrument :
 ECD_0
 ClientSampleId :
 RB47198RT

Integration File signal 1: autoint1.e
 Integration File signal 2: autoint2.e
 Quant Time: Sep 18 00:58:54 2018
 Quant Method : Z:\pestpcbsrv\HPCHEM1\ECD_0\methods\P0091118.M
 Quant Title : GC EXTRACTABLES
 QLast Update : Wed Sep 12 08:13:07 2018
 Response via : Initial Calibration
 Integrator: ChemStation 6890 Scale Mode: Small noise peaks clipped

Volume Inj. : 2 µl
 Signal #1 Phase : ZB-MR1 Signal #2 Phase: ZB-MR2
 Signal #1 Info : 30Mx0.32mmx 0.50µ Signal #2 Info : 30M x 0.32mm x 0.25µm

Compound	RT#1	RT#2	Resp#1	Resp#2	ng/ml	ng/ml

System Monitoring Compounds						
1) SA Tetrachlo...	4.398	3.527	4387263	4519921	26.779	24.776
2) SA Decachlor...	10.116	8.462	4291289	3555957	19.262	19.163

Target Compounds

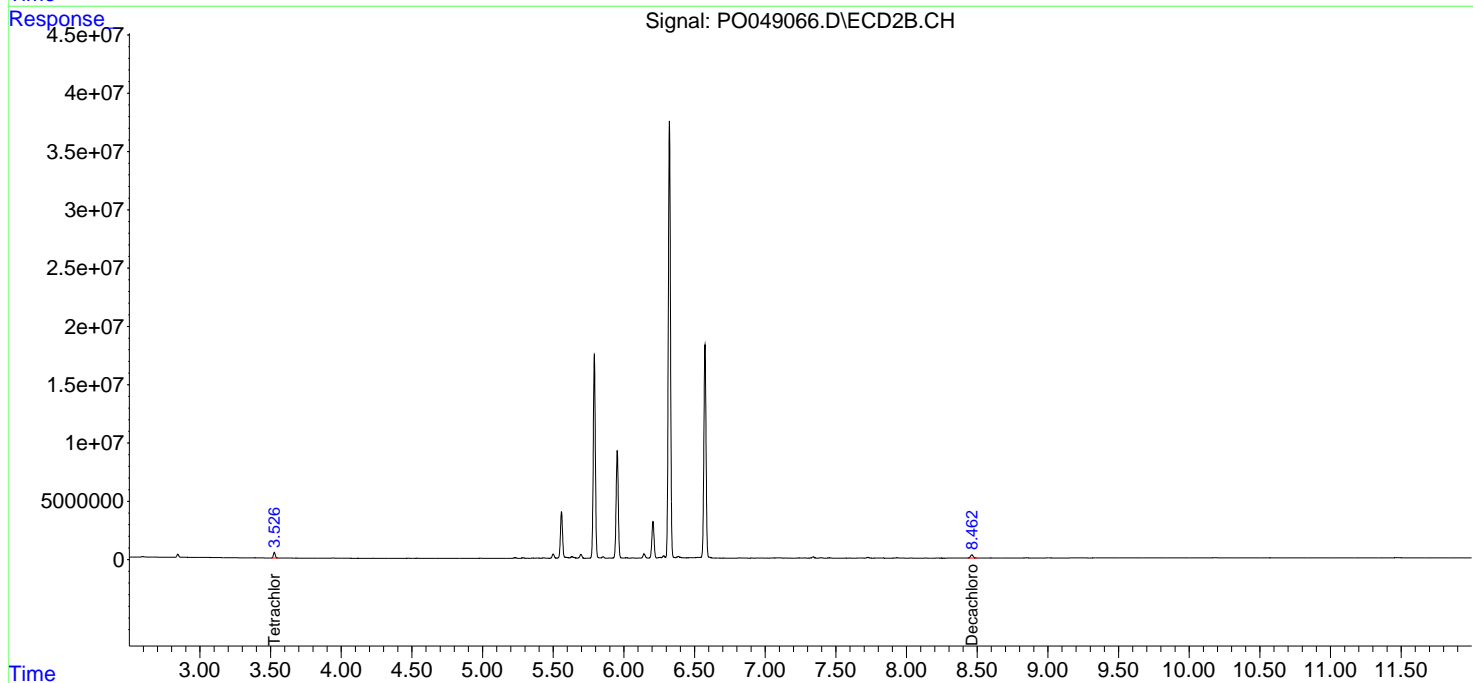
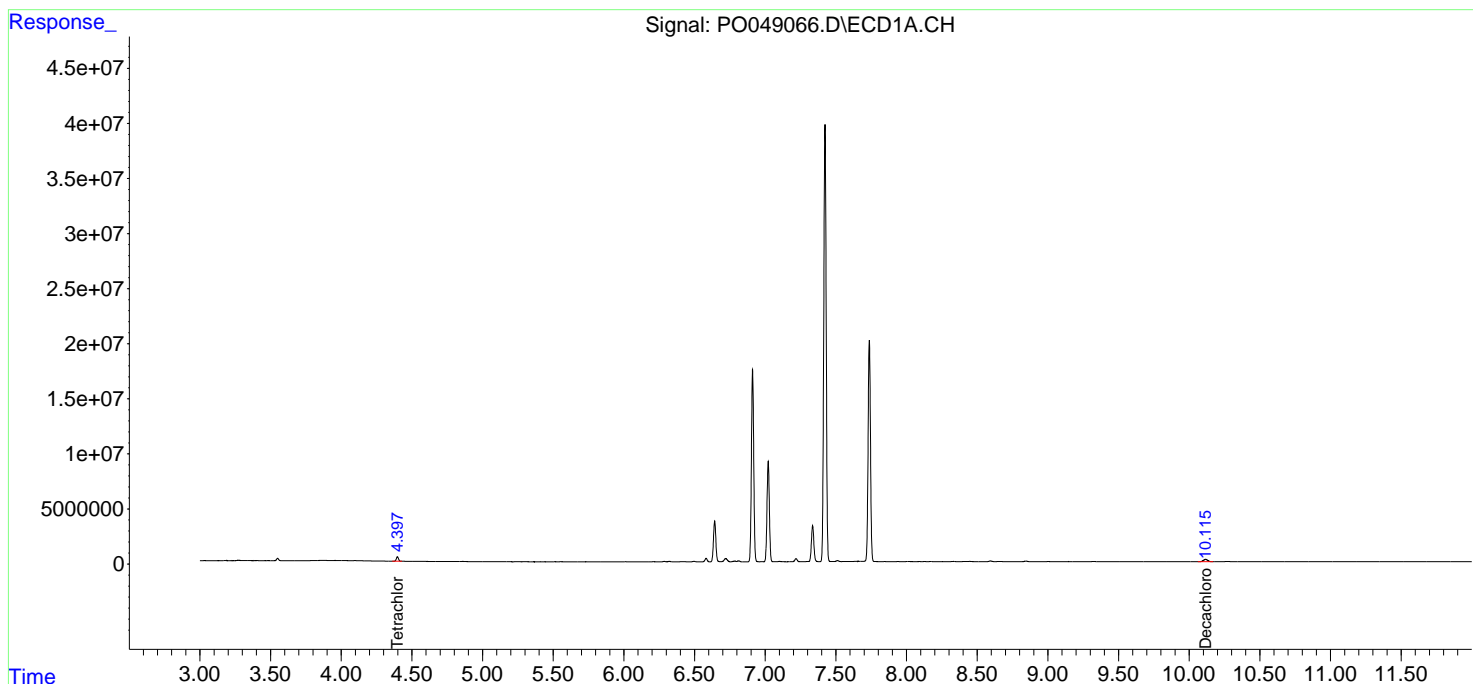
(f)=RT Delta > 1/2 Window (#)=Amounts differ by > 25% (m)=manual int.

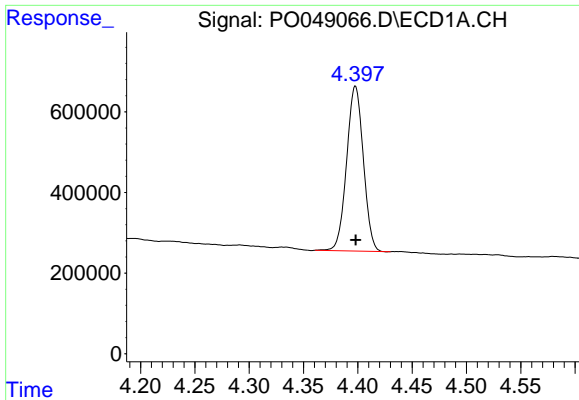
Data Path : Z:\pestpcbsrv\HPCHEM1\ECD_0\Data\P0091718\
 Data File : P0049066.D
 Signal(s) : Signal #1: ECD1A.CH Signal #2: ECD2B.CH
 Acq On : 17 Sep 2018 22:45
 Operator : SM/SJ
 Sample : J4941-04
 Misc :
 ALS Vial : 23 Sample Multiplier: 1

Instrument :
 ECD_O
 ClientSampleId :
 RB47198RT

Integration File signal 1: autoint1.e
 Integration File signal 2: autoint2.e
 Quant Time: Sep 18 00:58:54 2018
 Quant Method : Z:\pestpcbsrv\HPCHEM1\ECD_0\methods\P0091118.M
 Quant Title : GC EXTRACTABLES
 QLast Update : Wed Sep 12 08:13:07 2018
 Response via : Initial Calibration
 Integrator: ChemStation 6890 Scale Mode: Small noise peaks clipped

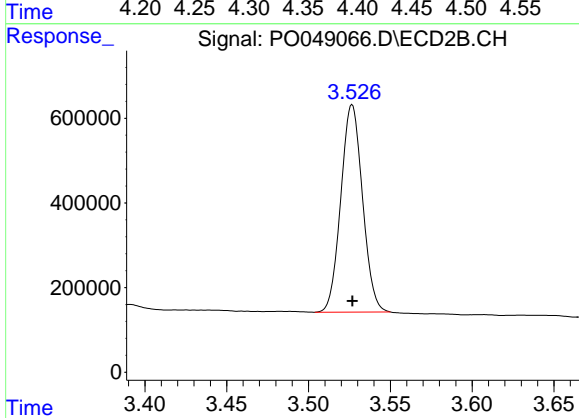
Volume Inj. : 2 µl
 Signal #1 Phase : ZB-MR1 Signal #2 Phase: ZB-MR2
 Signal #1 Info : 30Mx0.32mmx 0.50µ Signal #2 Info : 30M x 0.32mm x 0.25µm



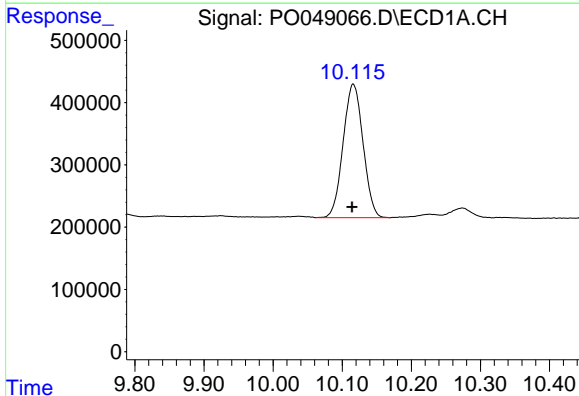


#1 Tetrachloro-m-xylene
 R.T.: 4.398 min
 Delta R.T.: 0.000 min
 Response: 4387263
 Conc: 26.78 ng/ml

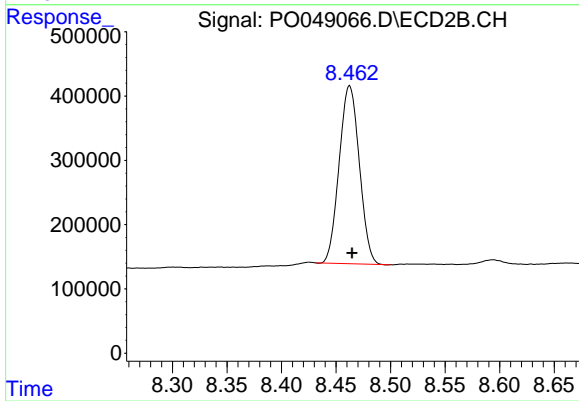
Instrument :
 ECD_O
 ClientSampled :
 RB47198RT



#1 Tetrachloro-m-xylene
 R.T.: 3.527 min
 Delta R.T.: 0.000 min
 Response: 4519921
 Conc: 24.78 ng/ml



#2 Decachlorobiphenyl
 R.T.: 10.116 min
 Delta R.T.: 0.001 min
 Response: 4291289
 Conc: 19.26 ng/ml



#2 Decachlorobiphenyl
 R.T.: 8.462 min
 Delta R.T.: -0.002 min
 Response: 3555957
 Conc: 19.16 ng/ml