

Data Path : Z:\pestpcbsrv\HPCHEM1\ECD\_0\Data\P0091719\  
 Data File : P0060992.D  
 Signal(s) : Signal #1: ECD1A.CH Signal #2: ECD2B.CH  
 Acq On : 17 Sep 2019 11:50  
 Operator : SM/AJ  
 Sample : K4897-05  
 Misc :  
 ALS Vial : 11 Sample Multiplier: 1

Instrument :  
 ECD\_0  
 ClientSampleId :  
 RBR-200052

Manual Integrations  
 APPROVED

Ankita  
 9/19/2019 9:02:03 AM

Integration File signal 1: autoint1.e  
 Integration File signal 2: autoint2.e  
 Quant Time: Sep 17 13:56:13 2019  
 Quant Method : Z:\pestpcbsrv\HPCHEM1\ECD\_0\methods\P0091319.M  
 Quant Title : GC EXTRACTABLES  
 QLast Update : Sat Sep 14 00:06:36 2019  
 Response via : Initial Calibration  
 Integrator: ChemStation 6890 Scale Mode: Small noise peaks clipped

Volume Inj. : 2 µl  
 Signal #1 Phase : ZB-MR1 Signal #2 Phase: ZB-MR2  
 Signal #1 Info : 30Mx0.32mmx 0.50µ Signal #2 Info : 30M x 0.32mm x 0.25µm

Compound	RT#1	RT#2	Resp#1	Resp#2	ng/ml	ng/ml
-----						
System Monitoring Compounds						
1) SA Tetrachlo...	4.373	3.534	1076810	846884	29.268	30.330
2) SA Decachlor...	10.042	8.419	677460	463343	14.745	13.219
Target Compounds						
26) L6 AR-1254-1	6.396	5.374	86738	91957	45.020m	44.619
27) L6 AR-1254-2	6.609	5.516	108973	29058	34.628	15.399 #
28) L6 AR-1254-3	6.976	5.912	169670	57218	48.175	17.996 #
29) L6 AR-1254-4	7.255	6.138	90620	31704	33.476m	15.228m#
30) L6 AR-1254-5	7.675	6.549	78228	81754	26.529m	25.831
-----						

(f)=RT Delta > 1/2 Window (#)=Amounts differ by > 25% (m)=manual int.

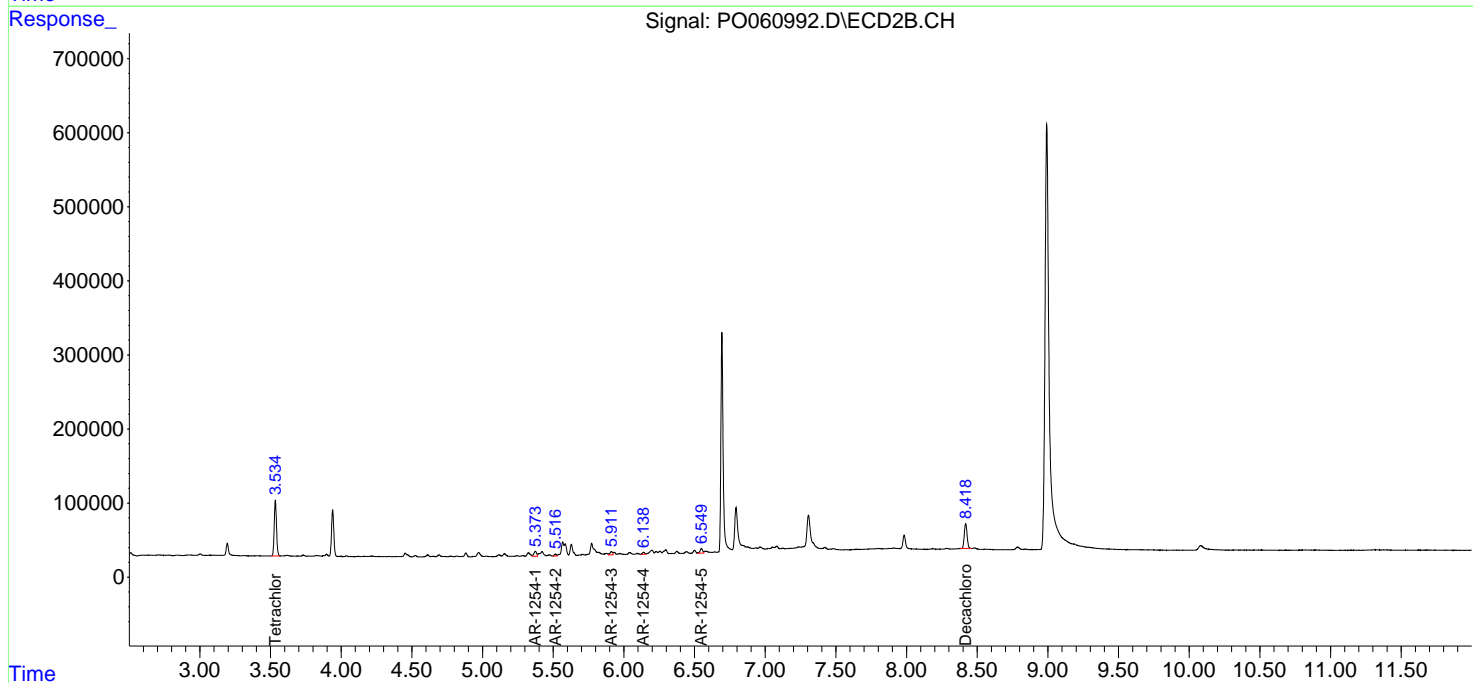
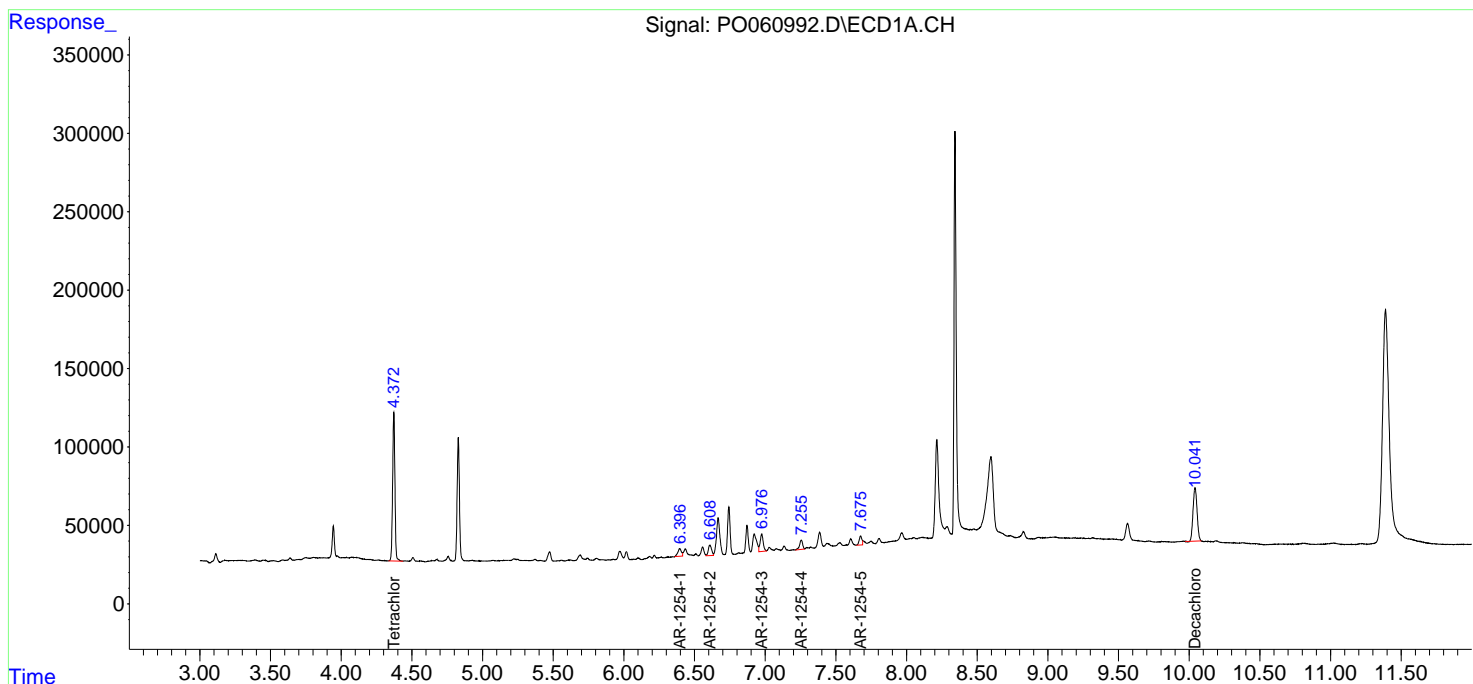
Data Path : Z:\pestpcbsrv\HPCHEM1\ECD\_0\Data\P0091719\  
 Data File : P0060992.D  
 Signal(s) : Signal #1: ECD1A.CH Signal #2: ECD2B.CH  
 Acq On : 17 Sep 2019 11:50  
 Operator : SM/AJ  
 Sample : K4897-05  
 Misc :  
 ALS Vial : 11 Sample Multiplier: 1

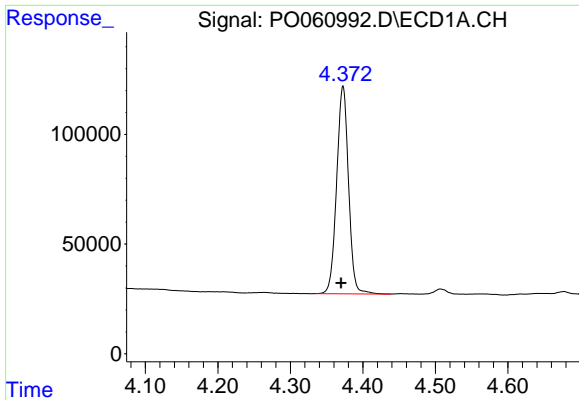
**Instrument :**  
 ECD\_O  
**Client Sampled :**  
 RBR-200052

**Manual Integrations**  
**APPROVED**  
 Ankita  
 9/19/2019 9:02:03 AM

Integration File signal 1: autoint1.e  
 Integration File signal 2: autoint2.e  
 Quant Time: Sep 17 13:56:13 2019  
 Quant Method : Z:\pestpcbsrv\HPCHEM1\ECD\_0\methods\P0091319.M  
 Quant Title : GC EXTRACTABLES  
 QLast Update : Sat Sep 14 00:06:36 2019  
 Response via : Initial Calibration  
 Integrator: ChemStation 6890 Scale Mode: Small noise peaks clipped

Volume Inj. : 2 µl  
 Signal #1 Phase : ZB-MR1 Signal #2 Phase: ZB-MR2  
 Signal #1 Info : 30Mx0.32mmx 0.50µ Signal #2 Info : 30M x 0.32mm x 0.25µm

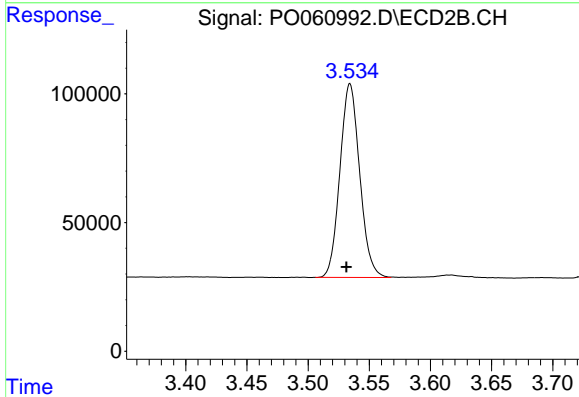




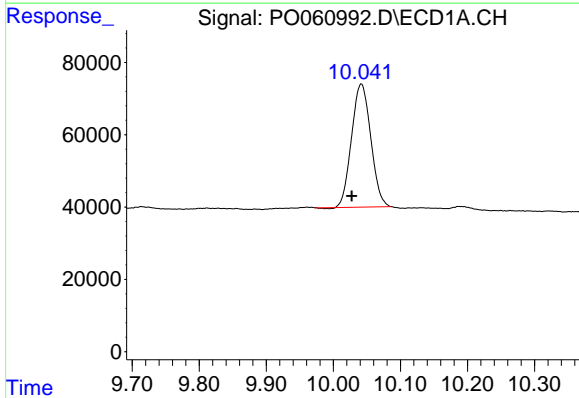
#1 Tetrachloro-m-xylene  
 R.T.: 4.373 min  
 Delta R.T.: 0.003 min  
 Response: 1076810  
 Conc: 29.27 ng/ml

**Instrument :**  
 ECD\_O  
**ClientSampled :**  
 RBR-200052

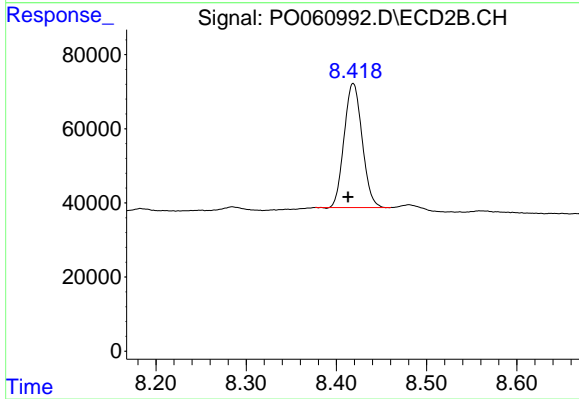
**Manual Integrations**  
**APPROVED**  
 Ankita  
 9/19/2019 9:02:03 AM



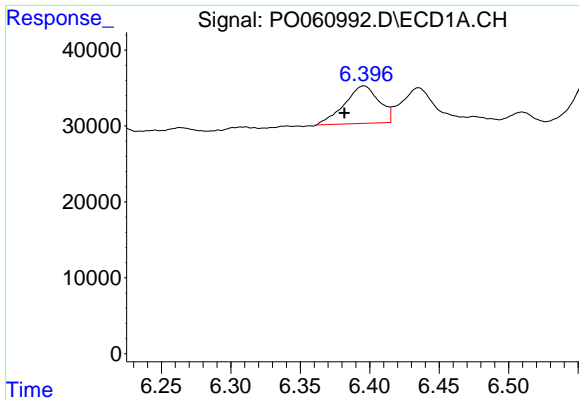
#1 Tetrachloro-m-xylene  
 R.T.: 3.534 min  
 Delta R.T.: 0.003 min  
 Response: 846884  
 Conc: 30.33 ng/ml



#2 Decachlorobiphenyl  
 R.T.: 10.042 min  
 Delta R.T.: 0.014 min  
 Response: 677460  
 Conc: 14.74 ng/ml



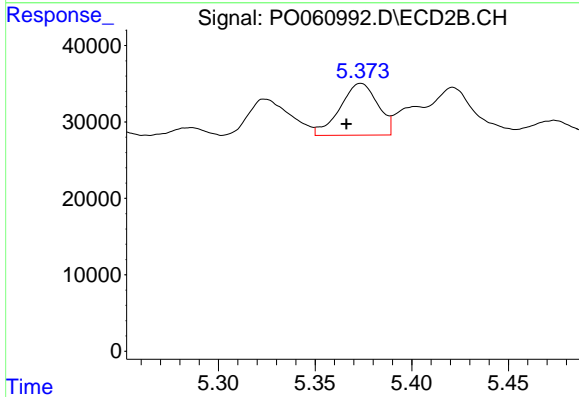
#2 Decachlorobiphenyl  
 R.T.: 8.419 min  
 Delta R.T.: 0.006 min  
 Response: 463343  
 Conc: 13.22 ng/ml



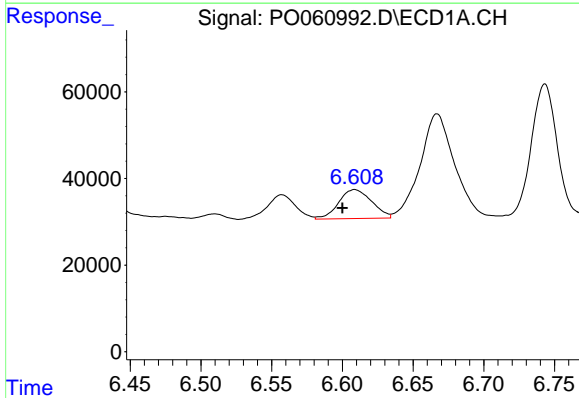
#26 AR-1254-1  
 R.T.: 6.396 min  
 Delta R.T.: 0.014 min  
 Response: 86738  
 Conc: 45.02 ng/ml m

**Instrument :**  
 ECD\_O  
**ClientSampled :**  
 RBR-200052

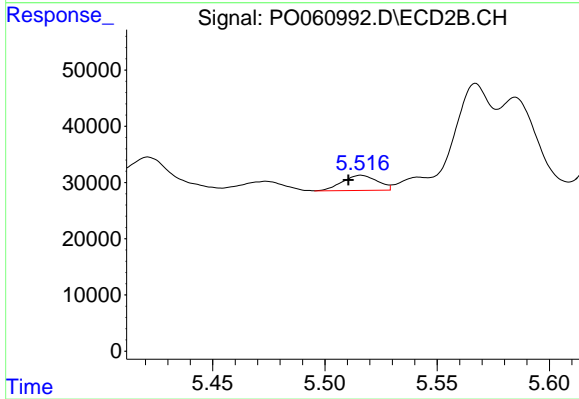
**Manual Integrations**  
**APPROVED**  
 Ankita  
 9/19/2019 9:02:03 AM



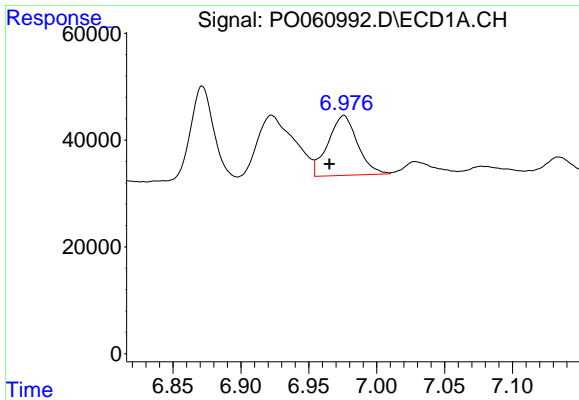
#26 AR-1254-1  
 R.T.: 5.374 min  
 Delta R.T.: 0.007 min  
 Response: 91957  
 Conc: 44.62 ng/ml



#27 AR-1254-2  
 R.T.: 6.609 min  
 Delta R.T.: 0.009 min  
 Response: 108973  
 Conc: 34.63 ng/ml



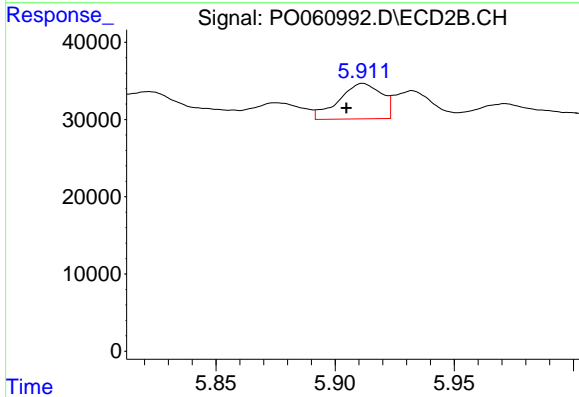
#27 AR-1254-2  
 R.T.: 5.516 min  
 Delta R.T.: 0.006 min  
 Response: 29058  
 Conc: 15.40 ng/ml



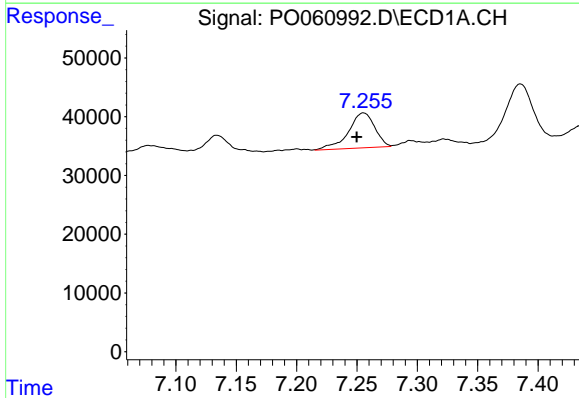
#28 AR-1254-3  
 R.T.: 6.976 min  
 Delta R.T.: 0.011 min  
 Response: 169670  
 Conc: 48.17 ng/ml

**Instrument :**  
 ECD\_O  
**ClientSampled :**  
 RBR-200052

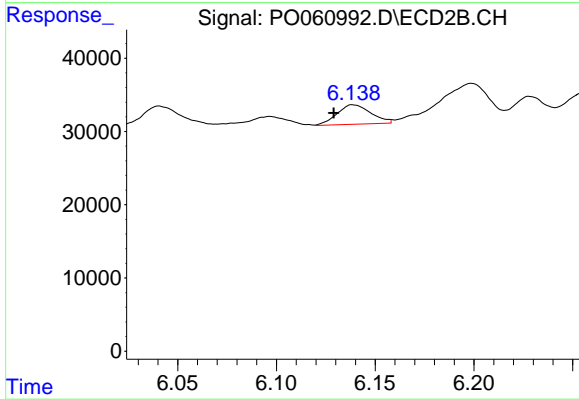
**Manual Integrations**  
**APPROVED**  
 Ankita  
 9/19/2019 9:02:03 AM



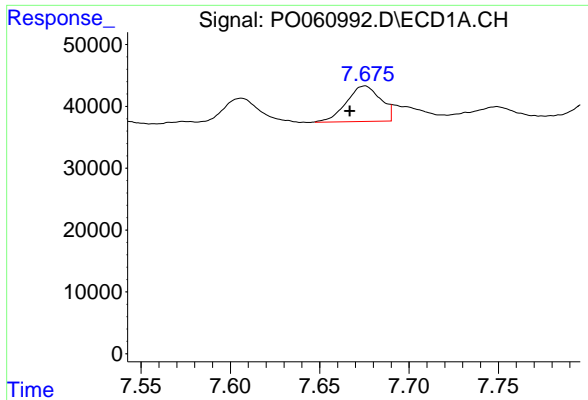
#28 AR-1254-3  
 R.T.: 5.912 min  
 Delta R.T.: 0.007 min  
 Response: 57218  
 Conc: 18.00 ng/ml



#29 AR-1254-4  
 R.T.: 7.255 min  
 Delta R.T.: 0.005 min  
 Response: 90620  
 Conc: 33.48 ng/ml m



#29 AR-1254-4  
 R.T.: 6.138 min  
 Delta R.T.: 0.009 min  
 Response: 31704  
 Conc: 15.23 ng/ml m



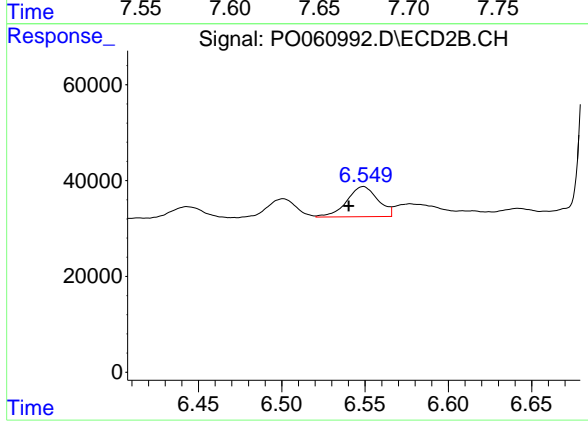
#30 AR-1254-5

R.T.: 7.675 min  
Delta R.T.: 0.009 min  
Response: 78228  
Conc: 26.53 ng/ml m

Instrument :  
ECD\_O  
ClientSampled :  
RBR-200052

Manual Integrations  
APPROVED

Ankita  
9/19/2019 9:02:03 AM



#30 AR-1254-5

R.T.: 6.549 min  
Delta R.T.: 0.009 min  
Response: 81754  
Conc: 25.83 ng/ml