

Data Path : Z:\pestpcbsrv\HPCHEM1\ECD\_0\Data\P0091719\  
 Data File : P0061031.D  
 Signal(s) : Signal #1: ECD1A.CH Signal #2: ECD2B.CH  
 Acq On : 18 Sep 2019 00:09  
 Operator : SM/AJ  
 Sample : K4923-06  
 Misc :  
 ALS Vial : 46 Sample Multiplier: 1

Instrument :  
 ECD\_0  
 ClientSampleId :  
 SB-47-COMP

Integration File signal 1: autoint1.e  
 Integration File signal 2: autoint2.e  
 Quant Time: Sep 18 11:44:48 2019  
 Quant Method : Z:\pestpcbsrv\HPCHEM1\ECD\_0\methods\P0091319.M  
 Quant Title : GC EXTRACTABLES  
 QLast Update : Sat Sep 14 00:06:36 2019  
 Response via : Initial Calibration  
 Integrator: ChemStation 6890 Scale Mode: Small noise peaks clipped

Volume Inj. : 2 µl  
 Signal #1 Phase : ZB-MR1 Signal #2 Phase: ZB-MR2  
 Signal #1 Info : 30Mx0.32mmx 0.50µ Signal #2 Info : 30M x 0.32mm x 0.25µm

Compound	RT#1	RT#2	Resp#1	Resp#2	ng/ml	ng/ml
-----						
System Monitoring Compounds						
1) SA Tetrachlo...	4.367	3.530	950465	734602	25.834	26.309
2) SA Decachlor...	10.027	8.407	783346	577907	17.049	16.487

Target Compounds

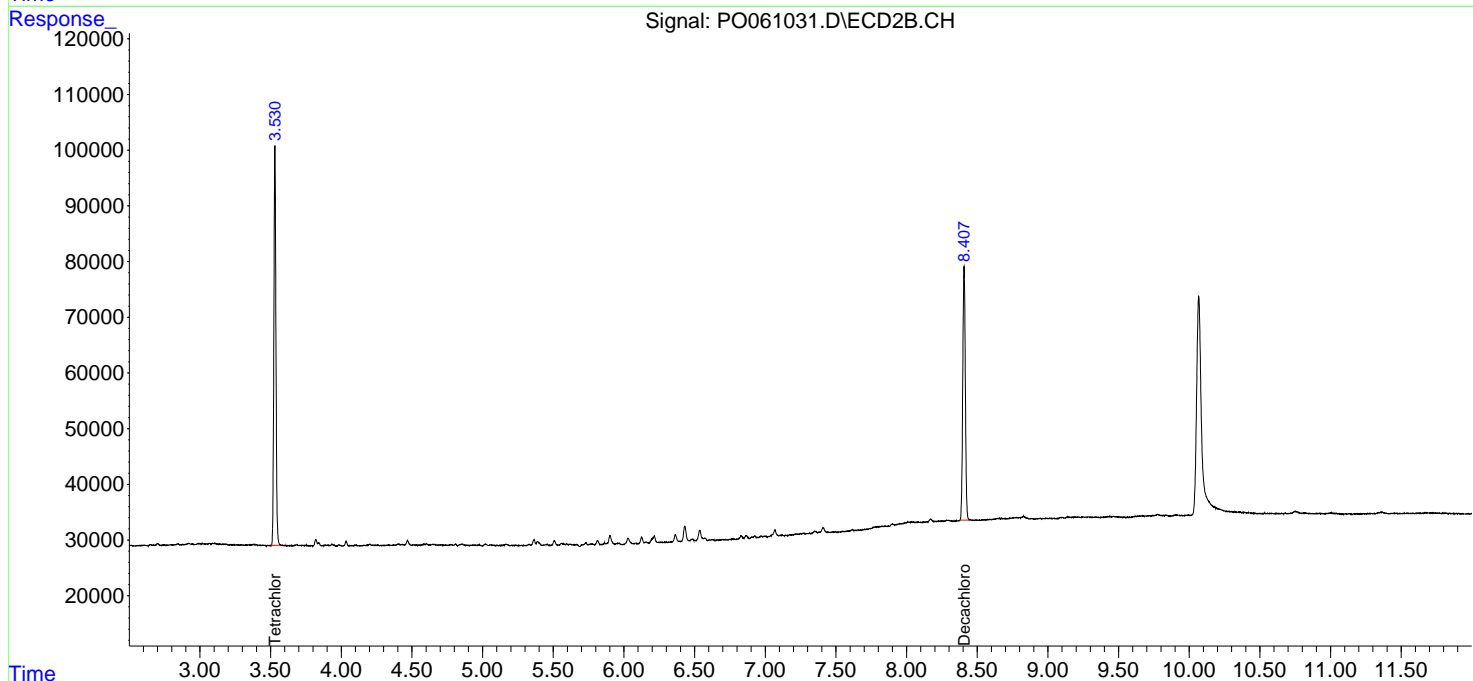
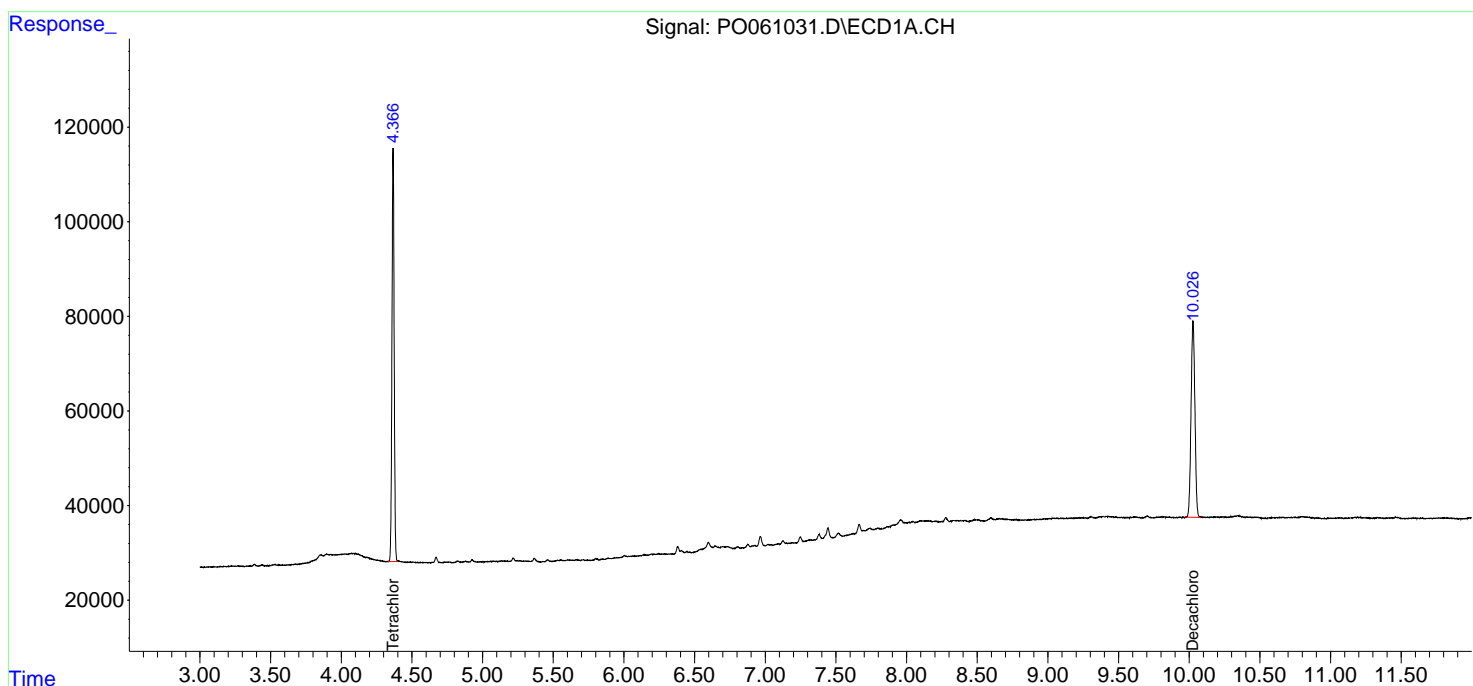
(f)=RT Delta > 1/2 Window (#)=Amounts differ by > 25% (m)=manual int.

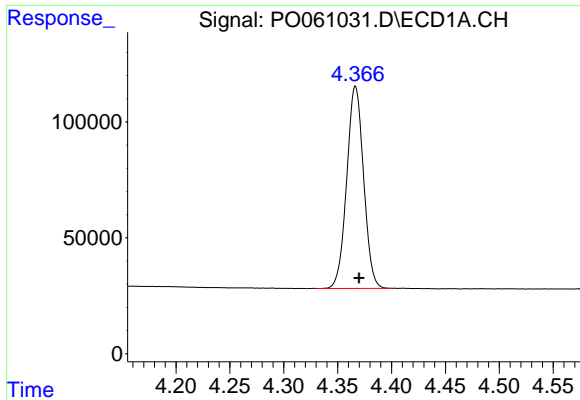
Data Path : Z:\pestpcbsrv\HPCHEM1\ECD\_0\Data\P0091719\  
 Data File : P0061031.D  
 Signal(s) : Signal #1: ECD1A.CH Signal #2: ECD2B.CH  
 Acq On : 18 Sep 2019 00:09  
 Operator : SM/AJ  
 Sample : K4923-06  
 Misc :  
 ALS Vial : 46 Sample Multiplier: 1

Instrument :  
 ECD\_0  
 ClientSampled :  
 SB-47-COMP

Integration File signal 1: autoint1.e  
 Integration File signal 2: autoint2.e  
 Quant Time: Sep 18 11:44:48 2019  
 Quant Method : Z:\pestpcbsrv\HPCHEM1\ECD\_0\methods\P0091319.M  
 Quant Title : GC EXTRACTABLES  
 QLast Update : Sat Sep 14 00:06:36 2019  
 Response via : Initial Calibration  
 Integrator: ChemStation 6890 Scale Mode: Small noise peaks clipped

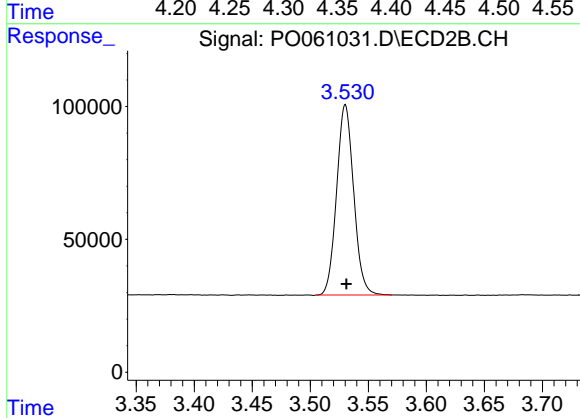
Volume Inj. : 2 µl  
 Signal #1 Phase : ZB-MR1 Signal #2 Phase: ZB-MR2  
 Signal #1 Info : 30Mx0.32mmx 0.50µ Signal #2 Info : 30M x 0.32mm x 0.25µm



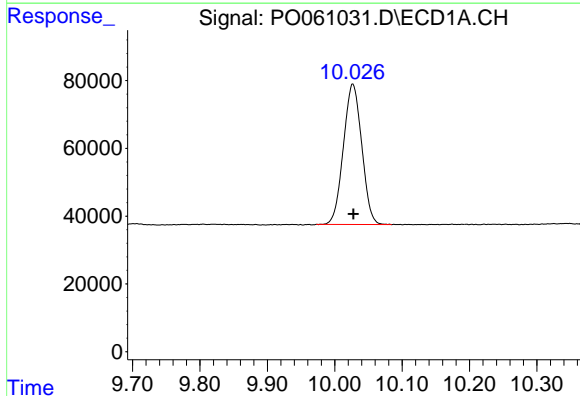


#1 Tetrachloro-m-xylene  
 R.T.: 4.367 min  
 Delta R.T.: -0.003 min  
 Response: 950465  
 Conc: 25.83 ng/ml

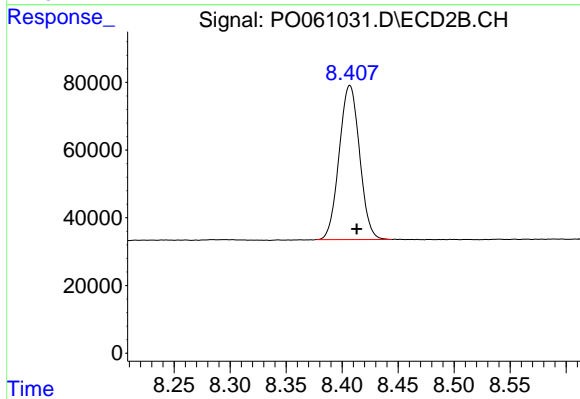
Instrument :  
 ECD\_O  
 ClientSampleId :  
 SB-47-COMP



#1 Tetrachloro-m-xylene  
 R.T.: 3.530 min  
 Delta R.T.: -0.001 min  
 Response: 734602  
 Conc: 26.31 ng/ml



#2 Decachlorobiphenyl  
 R.T.: 10.027 min  
 Delta R.T.: 0.000 min  
 Response: 783346  
 Conc: 17.05 ng/ml



#2 Decachlorobiphenyl  
 R.T.: 8.407 min  
 Delta R.T.: -0.006 min  
 Response: 577907  
 Conc: 16.49 ng/ml