

Data Path : Z:\pestpcbsrv\HPCHEM1\ECD_0\Data\P0091719\
 Data File : P0061034.D
 Signal(s) : Signal #1: ECD1A.CH Signal #2: ECD2B.CH
 Acq On : 18 Sep 2019 00:58
 Operator : SM/AJ
 Sample : K4924-02
 Misc :
 ALS Vial : 49 Sample Multiplier: 1

Instrument :
 ECD_0
ClientSampleId :
 SB-48-COMP

Manual Integrations
APPROVED

Ankita
 9/19/2019 9:02:48 AM

Integration File signal 1: autoint1.e
 Integration File signal 2: autoint2.e
 Quant Time: Sep 18 03:00:04 2019
 Quant Method : Z:\pestpcbsrv\HPCHEM1\ECD_0\methods\P0091319.M
 Quant Title : GC EXTRACTABLES
 QLast Update : Sat Sep 14 00:06:36 2019
 Response via : Initial Calibration
 Integrator: ChemStation 6890 Scale Mode: Small noise peaks clipped

Volume Inj. : 2 µl
 Signal #1 Phase : ZB-MR1 Signal #2 Phase: ZB-MR2
 Signal #1 Info : 30Mx0.32mmx 0.50µ Signal #2 Info : 30M x 0.32mm x 0.25µm

Compound	RT#1	RT#2	Resp#1	Resp#2	ng/ml	ng/ml

System Monitoring Compounds						
1) SA Tetrachlo...	4.368	3.531	1028138	791791	27.945	28.357
2) SA Decachlor...	10.029	8.408	643258	485561	14.000	13.853

Target Compounds

 (f)=RT Delta > 1/2 Window (#)=Amounts differ by > 25% (m)=manual int.

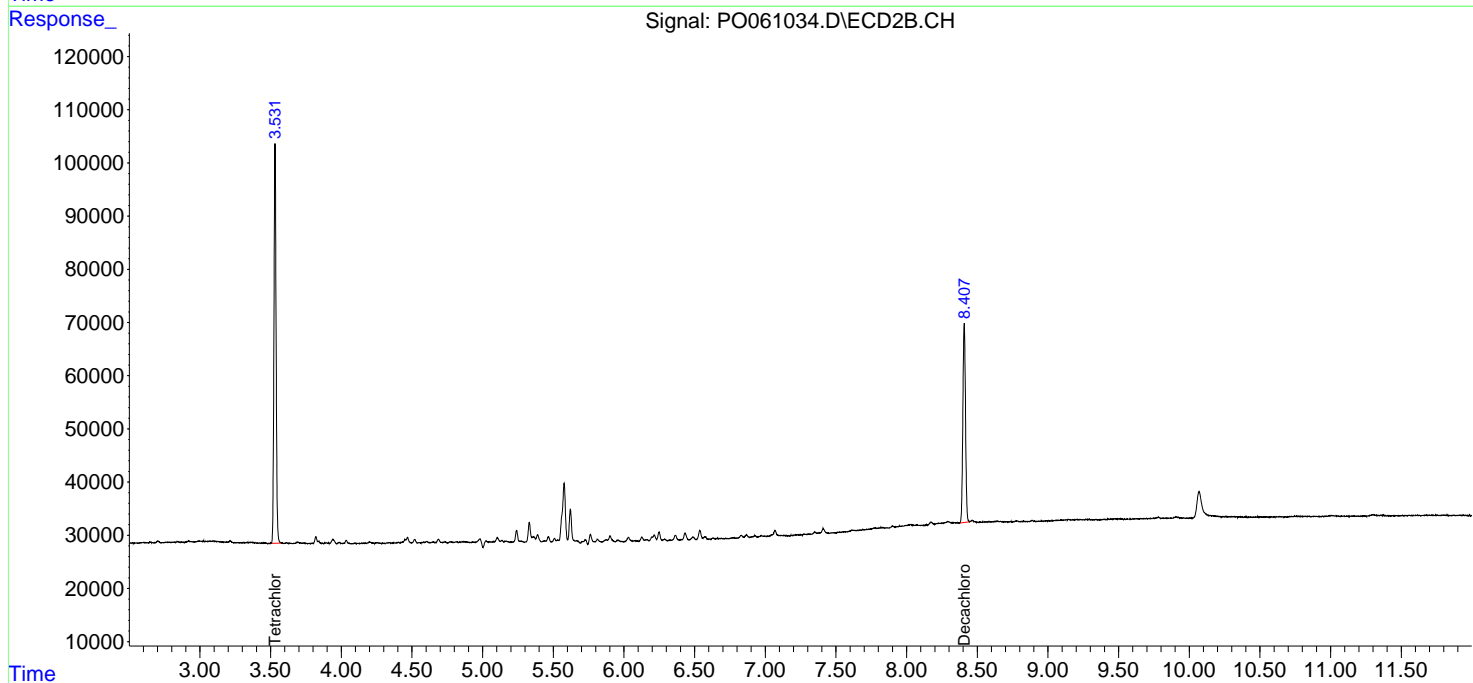
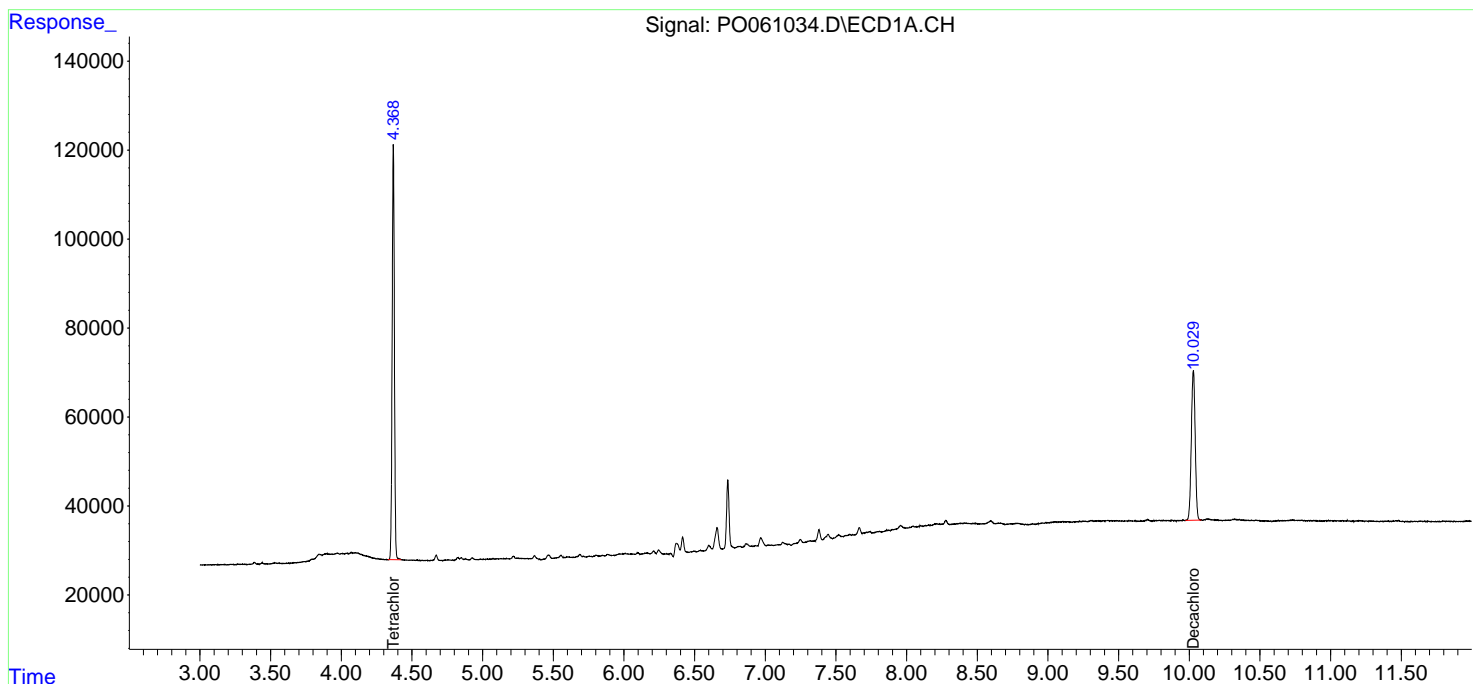
Data Path : Z:\pestpcbsrv\HPCHEM1\ECD_0\Data\P0091719\
 Data File : P0061034.D
 Signal(s) : Signal #1: ECD1A.CH Signal #2: ECD2B.CH
 Acq On : 18 Sep 2019 00:58
 Operator : SM/AJ
 Sample : K4924-02
 Misc :
 ALS Vial : 49 Sample Multiplier: 1

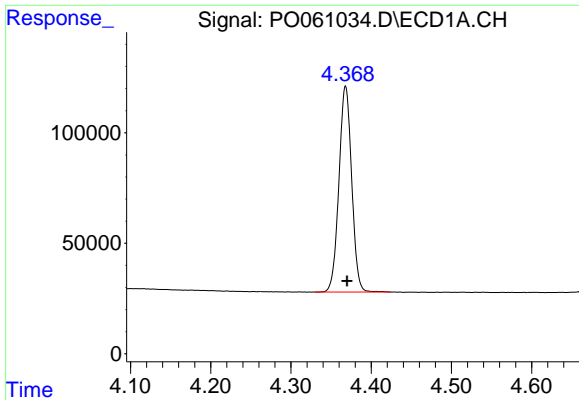
Instrument :
 ECD_O
ClientSampled :
 SB-48-COMP

Manual Integrations
APPROVED
 Ankita
 9/19/2019 9:02:48 AM

Integration File signal 1: autoint1.e
 Integration File signal 2: autoint2.e
 Quant Time: Sep 18 03:00:04 2019
 Quant Method : Z:\pestpcbsrv\HPCHEM1\ECD_0\methods\P0091319.M
 Quant Title : GC EXTRACTABLES
 QLast Update : Sat Sep 14 00:06:36 2019
 Response via : Initial Calibration
 Integrator: ChemStation 6890 Scale Mode: Small noise peaks clipped

Volume Inj. : 2 µl
 Signal #1 Phase : ZB-MR1 Signal #2 Phase: ZB-MR2
 Signal #1 Info : 30Mx0.32mmx 0.50µ Signal #2 Info : 30M x 0.32mm x 0.25µm

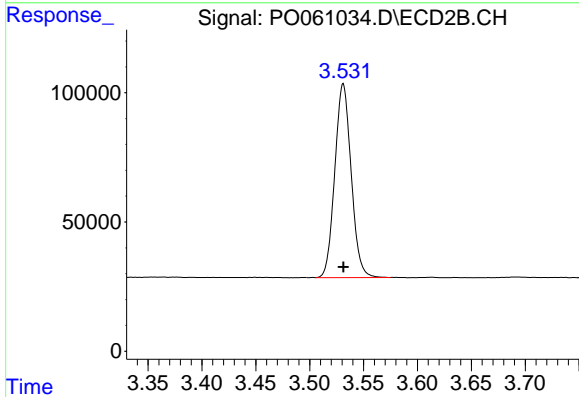




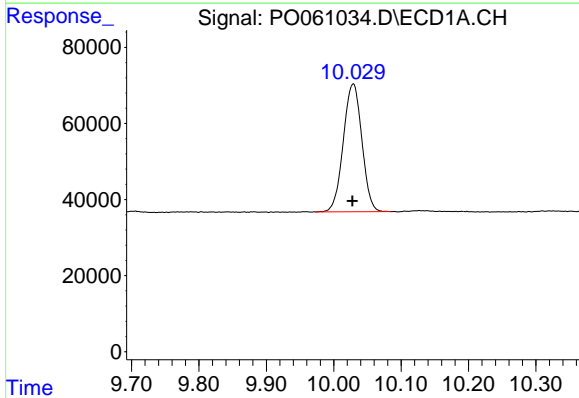
#1 Tetrachloro-m-xylene
 R.T.: 4.368 min
 Delta R.T.: -0.002 min
 Response: 1028138
 Conc: 27.95 ng/ml

Instrument :
 ECD_O
ClientSampled :
 SB-48-COMP

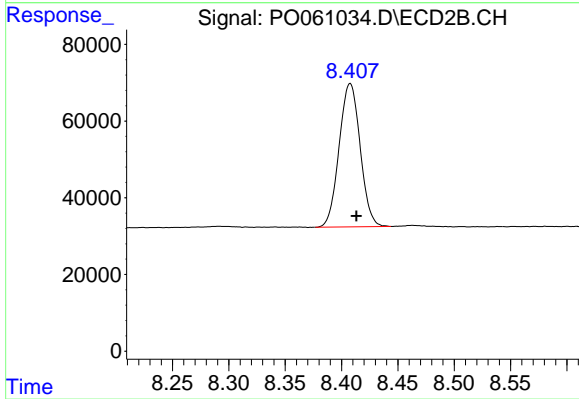
Manual Integrations
APPROVED
 Ankita
 9/19/2019 9:02:48 AM



#1 Tetrachloro-m-xylene
 R.T.: 3.531 min
 Delta R.T.: 0.000 min
 Response: 791791
 Conc: 28.36 ng/ml



#2 Decachlorobiphenyl
 R.T.: 10.029 min
 Delta R.T.: 0.002 min
 Response: 643258
 Conc: 14.00 ng/ml



#2 Decachlorobiphenyl
 R.T.: 8.408 min
 Delta R.T.: -0.005 min
 Response: 485561
 Conc: 13.85 ng/ml