

Data Path : Z:\pestpcbsrv\HPCHEM1\ECD_0\Data\P0091819\
 Data File : P0061105.D
 Signal(s) : Signal #1: ECD1A.CH Signal #2: ECD2B.CH
 Acq On : 18 Sep 2019 23:59
 Operator : SM/AJ
 Sample : K4878-03
 Misc :
 ALS Vial : 43 Sample Multiplier: 1

Instrument :
 ECD_0
 ClientSampled :
 CSA-2-6

Integration File signal 1: autoint1.e
 Integration File signal 2: autoint2.e
 Quant Time: Sep 19 03:55:35 2019
 Quant Method : Z:\pestpcbsrv\HPCHEM1\ECD_0\methods\P0091319.M
 Quant Title : GC EXTRACTABLES
 QLast Update : Sat Sep 14 00:06:36 2019
 Response via : Initial Calibration
 Integrator: ChemStation 6890 Scale Mode: Small noise peaks clipped

Volume Inj. : 2 µl
 Signal #1 Phase : ZB-MR1 Signal #2 Phase: ZB-MR2
 Signal #1 Info : 30Mx0.32mmx 0.50µ Signal #2 Info : 30M x 0.32mm x 0.25µm

Compound	RT#1	RT#2	Resp#1	Resp#2	ng/ml	ng/ml

System Monitoring Compounds						
1) SA Tetrachlo...	4.363	3.527	1387470	1049194	37.712	37.576
2) SA Decachlor...	10.023	8.403	1057175	713748	23.009	20.363
Target Compounds						
3) L1 AR-1016-1	5.548	4.595	20345	56196	12.730	45.457 #
4) L1 AR-1016-2	5.548	4.595	20345	56196	8.887	33.031 #
5) L1 AR-1016-3	5.548	4.769	20345	16165	14.172	16.674
6) L1 AR-1016-4	0.000	4.812	0	26957	N.D.	32.933 #
7) L1 AR-1016-5	0.000	5.016	0	14840	N.D.	14.169 #
9) L2 AR-1221-2	0.000	3.816	0	20182	N.D.	71.814 #
10) L2 AR-1221-3	0.000	3.890	0	15364	N.D.	18.510 #
11) L3 AR-1232-1	0.000	3.890	0	15364	N.D.	16.859 #
12) L3 AR-1232-2	5.216	4.595	29222	56196	45.068	55.658
13) L3 AR-1232-3	5.548	4.769	20345	16165	15.190	28.805 #
14) L3 AR-1232-4	0.000	4.849	0	12224	N.D.	23.408 #
15) L3 AR-1232-5	0.000	5.016	0	14840	N.D.	26.223 #
16) L4 AR-1242-1	5.548	4.595	20345	56196	17.048	61.728 #
17) L4 AR-1242-2	5.548	4.595	20345	56196	11.904	44.890 #
18) L4 AR-1242-3	5.548	4.769	20345	16165	18.788	22.623
19) L4 AR-1242-4	0.000	4.849	0	12224	N.D.	16.786 #
20) L4 AR-1242-5	6.403	5.359	14977	50215	13.364	50.727 #
21) L5 AR-1248-1	5.548	4.595	20345	56196	22.100	79.230 #
22) L5 AR-1248-2	0.000	4.812	0	26957	N.D.	27.900 #
23) L5 AR-1248-3	0.000	4.849	0	12224	N.D.	12.137 #
24) L5 AR-1248-4	6.403	5.016	14977	14840	8.220	12.357 #
25) L5 AR-1248-5	6.403	5.397	14977	30678	8.560	24.267 #
26) L6 AR-1254-1	6.376	5.359	47566	50215	24.688	24.365
27) L6 AR-1254-2	6.598	5.502	91841	27563	29.184	14.607 #
28) L6 AR-1254-3	6.961	5.897	96296	102032	27.341	32.091
29) L6 AR-1254-4	7.244	6.121	30023	25562	11.091	12.278
30) L6 AR-1254-5	7.661	6.532	108009	129463	36.628	40.906
31) L7 AR-1260-1	7.121	6.025	63200	69626	25.959	33.102 #
32) L7 AR-1260-2	7.374	6.211	138279	71744	45.737	27.813 #
33) L7 AR-1260-3	7.735	6.360	45837	55498	19.207	23.047
34) L7 AR-1260-4	7.956	6.825	106630	38268	38.114	17.880 #
35) L7 AR-1260-5	8.273	7.064	88667	71439	16.283	14.783
36) L8 AR-1262-1	7.735	6.570	45837	40961	12.976	13.714
37) L8 AR-1262-2	8.273	7.064	88667	71439	14.222	13.740
38) L8 AR-1262-3	8.588	7.345	73282	28952	17.199	13.641
39) L8 AR-1262-4	8.665	7.407	45814	71692	14.051	18.770 #
40) L8 AR-1262-5	0.000	7.896	0	31940	N.D.	19.083 #
41) L9 AR-1268-1	8.588	7.345	73282	28952	9.929	4.939 #
42) L9 AR-1268-2	8.665	7.407	45814	71692	6.782	13.451 #
43) L9 AR-1268-3	0.000	7.612	0	17757	N.D.	4.006 #

Data Path : Z:\pestpcbsrv\HPCHEM1\ECD_0\Data\P0091819\
 Data File : P0061105.D
 Signal(s) : Signal #1: ECD1A.CH Signal #2: ECD2B.CH
 Acq On : 18 Sep 2019 23:59
 Operator : SM/AJ
 Sample : K4878-03
 Misc :
 ALS Vial : 43 Sample Multiplier: 1

Instrument :
 ECD_0
 ClientSampleId :
 CSA-2-6

Integration File signal 1: autoint1.e
 Integration File signal 2: autoint2.e
 Quant Time: Sep 19 03:55:35 2019
 Quant Method : Z:\pestpcbsrv\HPCHEM1\ECD_0\methods\P0091319.M
 Quant Title : GC EXTRACTABLES
 QLast Update : Sat Sep 14 00:06:36 2019
 Response via : Initial Calibration
 Integrator: ChemStation 6890 Scale Mode: Small noise peaks clipped

Volume Inj. : 2 µl
 Signal #1 Phase : ZB-MR1 Signal #2 Phase: ZB-MR2
 Signal #1 Info : 30Mx0.32mmx 0.50µ Signal #2 Info : 30M x 0.32mm x 0.25µm

	Compound	RT#1	RT#2	Resp#1	Resp#2	ng/ml	ng/ml
44)	L9 AR-1268-4	0.000	7.896	0	31940	N.D.	16.715 #
45)	L9 AR-1268-5	9.699	8.168	41178	55027	2.596	4.573 #

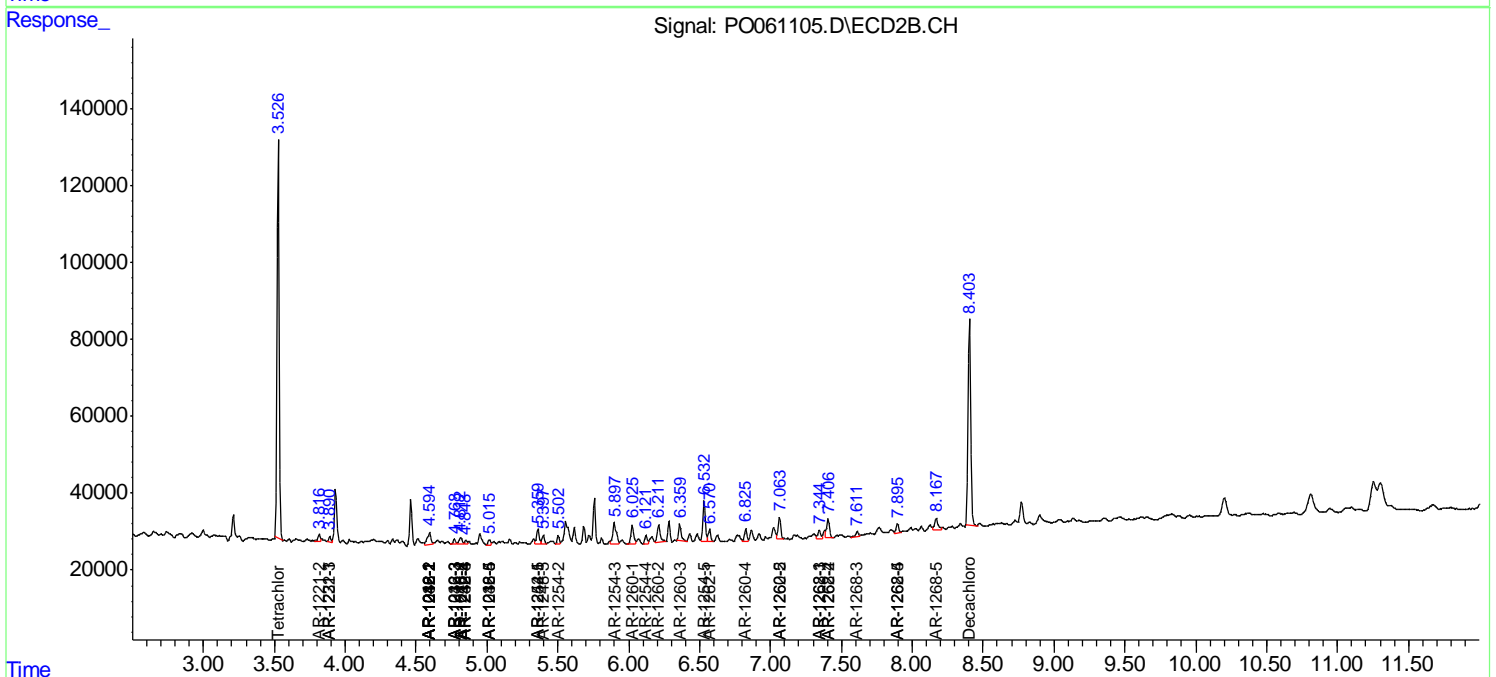
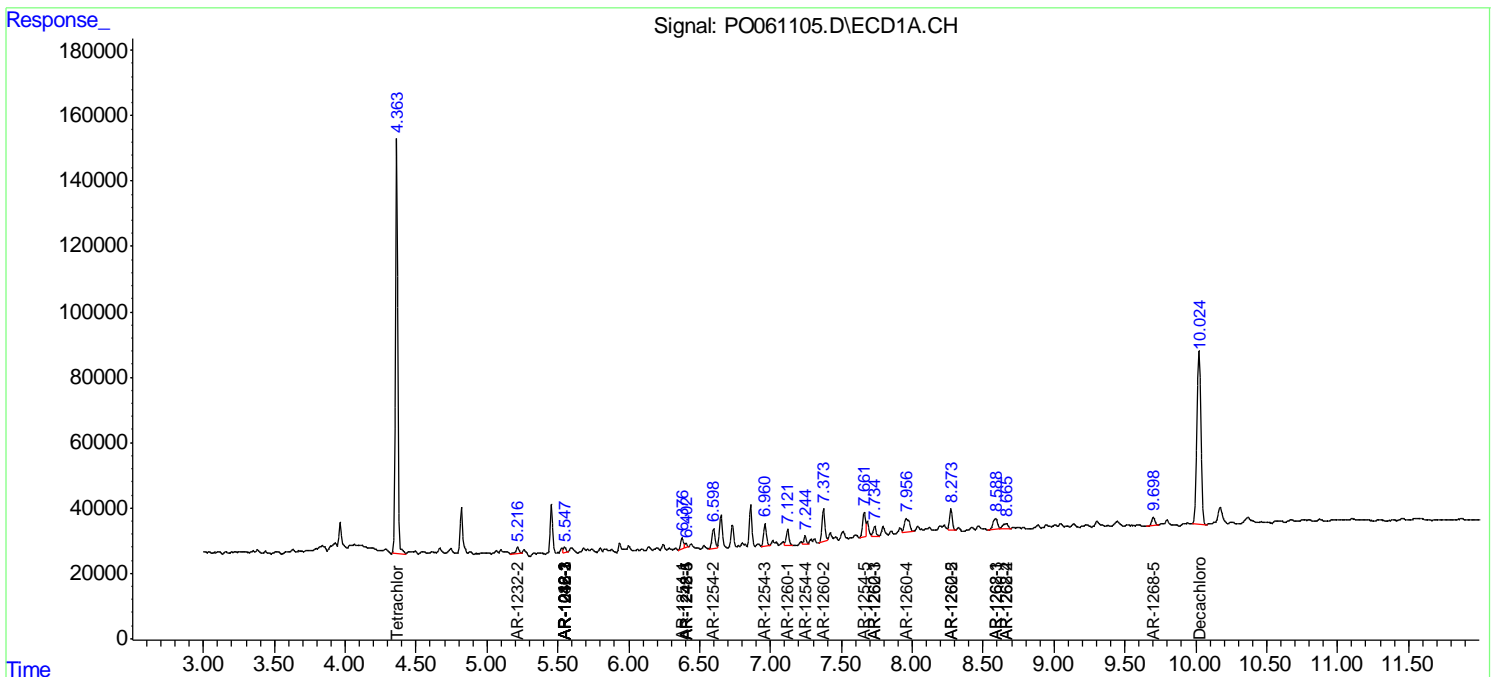
(f)=RT Delta > 1/2 Window (#)=Amounts differ by > 25% (m)=manual int.

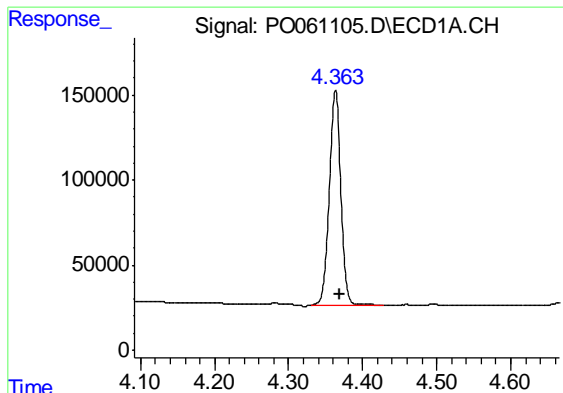
Data Path : Z:\pestpcbsrv\HPCHEM1\ECD_O\Data\PO091819\
 Data File : PO061105.D
 Signal(s) : Signal #1: ECD1A.CH Signal #2: ECD2B.CH
 Acq On : 18 Sep 2019 23:59
 Operator : SM/AJ
 Sample : K4878-03
 Misc :
 ALS Vial : 43 Sample Multiplier: 1

Instrument :
 ECD_O
 ClientSampled :
 CSA-2-6

Integration File signal 1: autoint1.e
 Integration File signal 2: autoint2.e
 Quant Time: Sep 19 03:55:35 2019
 Quant Method : Z:\pestpcbsrv\HPCHEM1\ECD_O\methods\PO091319.M
 Quant Title : GC EXTRACTABLES
 QLast Update : Sat Sep 14 00:06:36 2019
 Response via : Initial Calibration
 Integrator: ChemStation 6890 Scale Mode: Small noise peaks clipped

Volume Inj. : 2 µl
 Signal #1 Phase : ZB-MR1 Signal #2 Phase: ZB-MR2
 Signal #1 Info : 30Mx0.32mmx 0.50µ Signal #2 Info : 30M x 0.32mm x 0.25µm

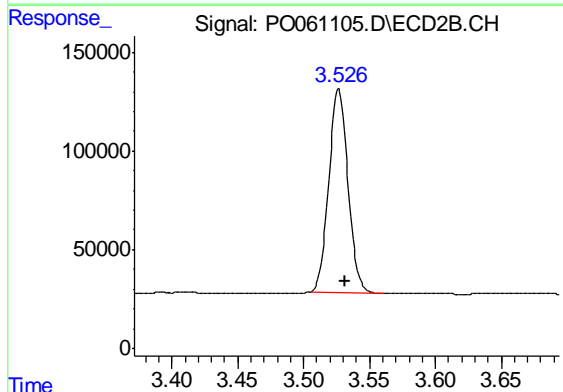




#1 Tetrachloro-m-xylene

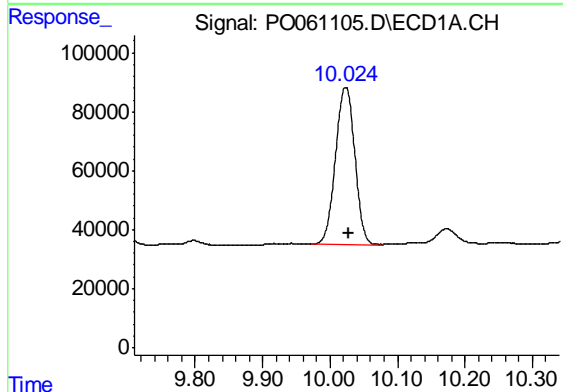
R.T.: 4.363 min
 Delta R.T.: -0.007 min
 Response: 1387470
 Conc: 37.71 ng/ml

Instrument :
 ECD_O
 ClientSampleId :
 CSA-2-6



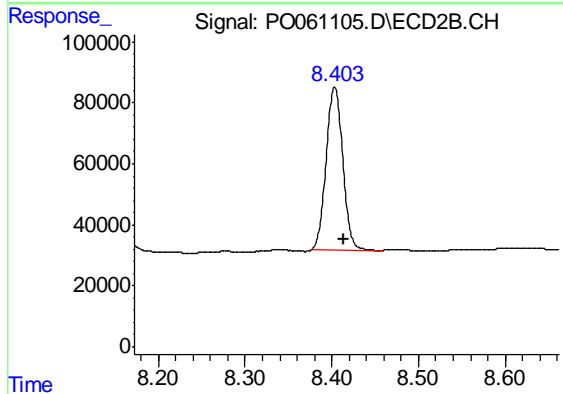
#1 Tetrachloro-m-xylene

R.T.: 3.527 min
 Delta R.T.: -0.005 min
 Response: 1049194
 Conc: 37.58 ng/ml



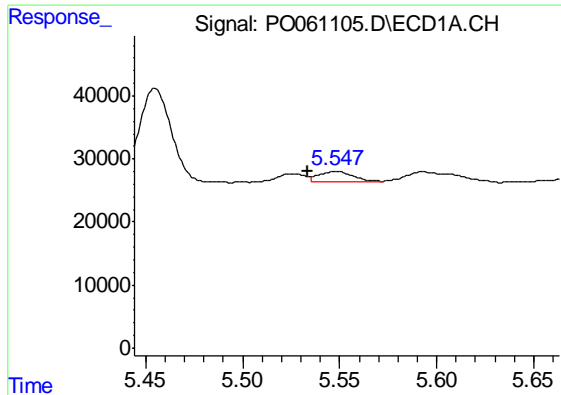
#2 Decachlorobiphenyl

R.T.: 10.023 min
 Delta R.T.: -0.004 min
 Response: 1057175
 Conc: 23.01 ng/ml



#2 Decachlorobiphenyl

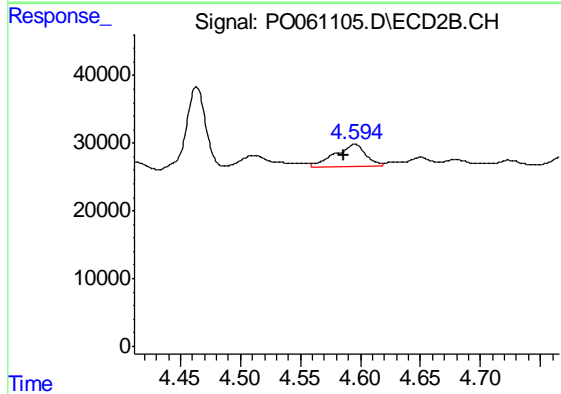
R.T.: 8.403 min
 Delta R.T.: -0.010 min
 Response: 713748
 Conc: 20.36 ng/ml



#3 AR-1016-1

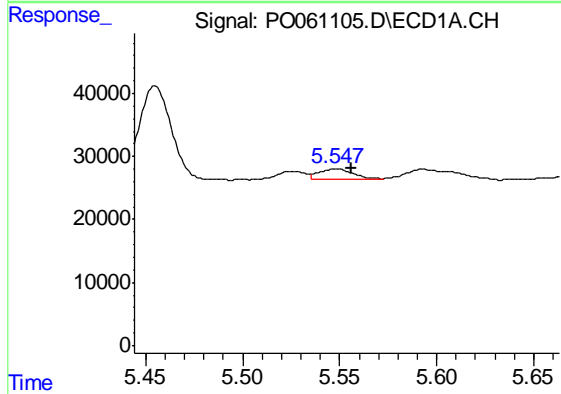
R.T.: 5.548 min
 Delta R.T.: 0.015 min
 Response: 20345
 Conc: 12.73 ng/ml

Instrument :
 ECD_O
 ClientSampled :
 CSA-2-6



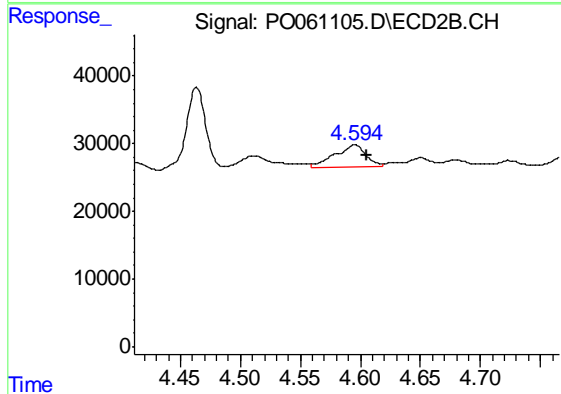
#3 AR-1016-1

R.T.: 4.595 min
 Delta R.T.: 0.009 min
 Response: 56196
 Conc: 45.46 ng/ml



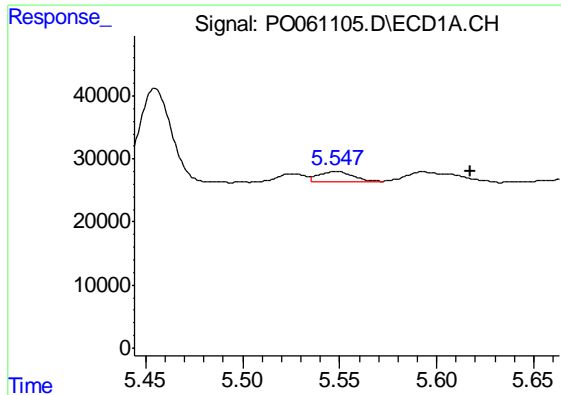
#4 AR-1016-2

R.T.: 5.548 min
 Delta R.T.: -0.008 min
 Response: 20345
 Conc: 8.89 ng/ml



#4 AR-1016-2

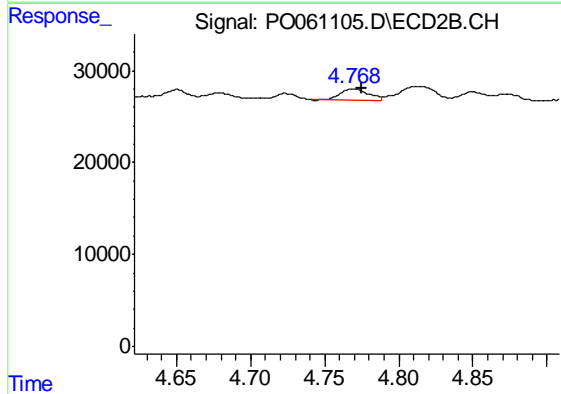
R.T.: 4.595 min
 Delta R.T.: -0.010 min
 Response: 56196
 Conc: 33.03 ng/ml



#5 AR-1016-3

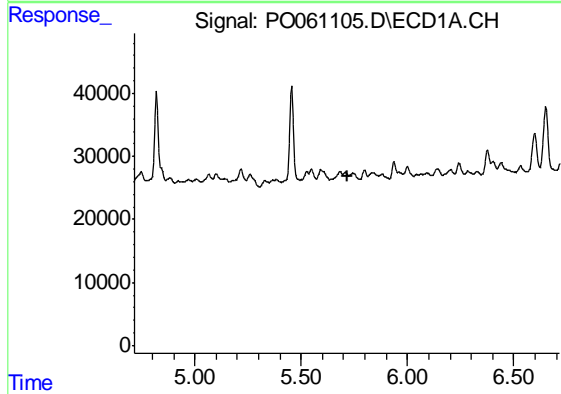
R.T.: 5.548 min
 Delta R.T.: -0.069 min
 Response: 20345
 Conc: 14.17 ng/ml

Instrument :
 ECD_O
 ClientSampleId :
 CSA-2-6



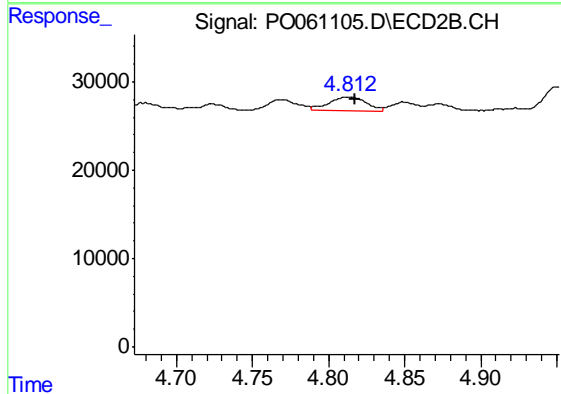
#5 AR-1016-3

R.T.: 4.769 min
 Delta R.T.: -0.006 min
 Response: 16165
 Conc: 16.67 ng/ml



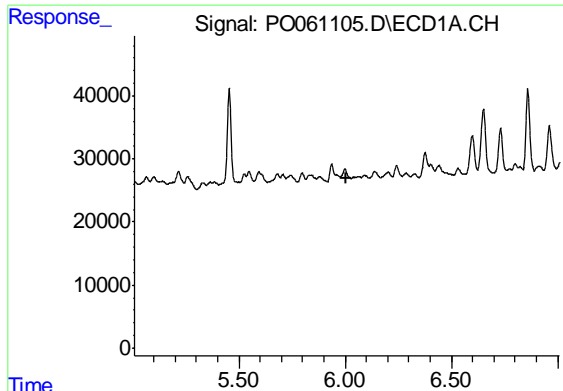
#6 AR-1016-4

R.T.: 0.000 min
 Exp R.T. : 5.716 min
 Response: 0
 Conc: N.D.



#6 AR-1016-4

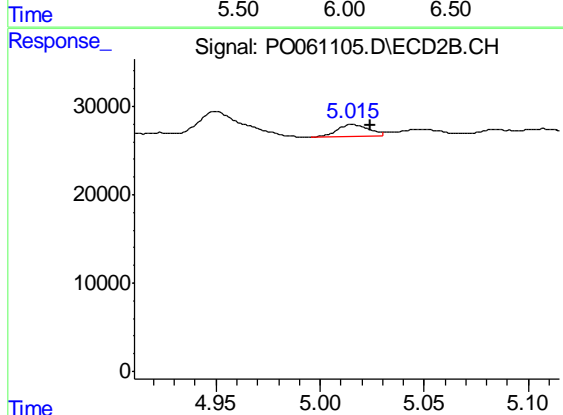
R.T.: 4.812 min
 Delta R.T.: -0.005 min
 Response: 26957
 Conc: 32.93 ng/ml



#7 AR-1016-5

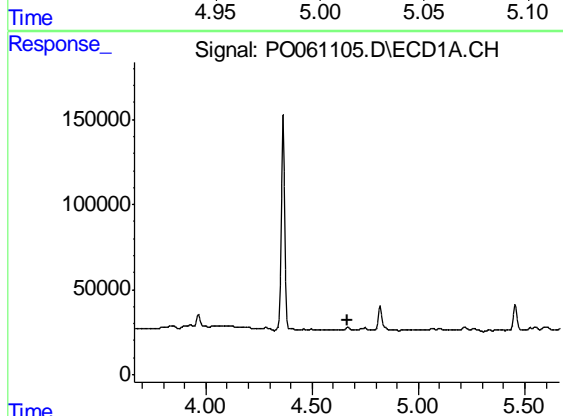
R.T.: 0.000 min
 Exp R.T. : 6.009 min
 Response: 0
 Conc: N.D.

Instrument :
 ECD_O
 ClientSampled :
 CSA-2-6



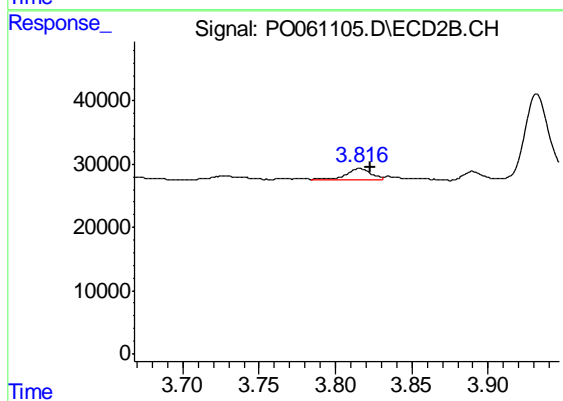
#7 AR-1016-5

R.T.: 5.016 min
 Delta R.T.: -0.009 min
 Response: 14840
 Conc: 14.17 ng/ml



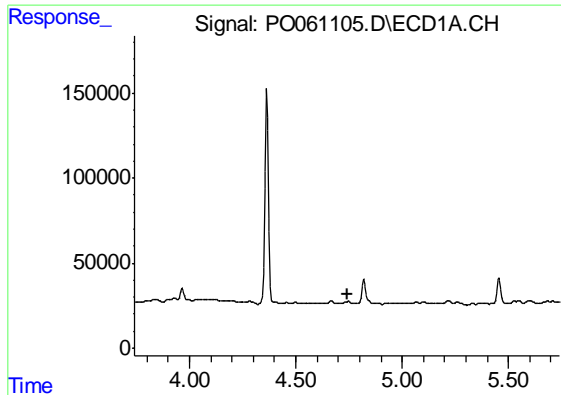
#9 AR-1221-2

R.T.: 0.000 min
 Exp R.T. : 4.664 min
 Response: 0
 Conc: N.D.



#9 AR-1221-2

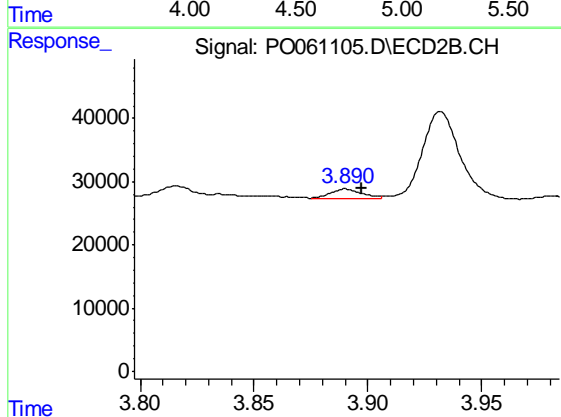
R.T.: 3.816 min
 Delta R.T.: -0.007 min
 Response: 20182
 Conc: 71.81 ng/ml



#10 AR-1221-3

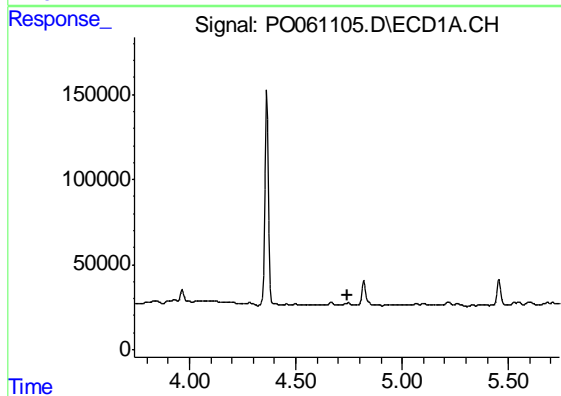
R.T.: 0.000 min
 Exp R.T. : 4.741 min
 Response: 0
 Conc: N.D.

Instrument :
 ECD_O
 ClientSampleId :
 CSA-2-6



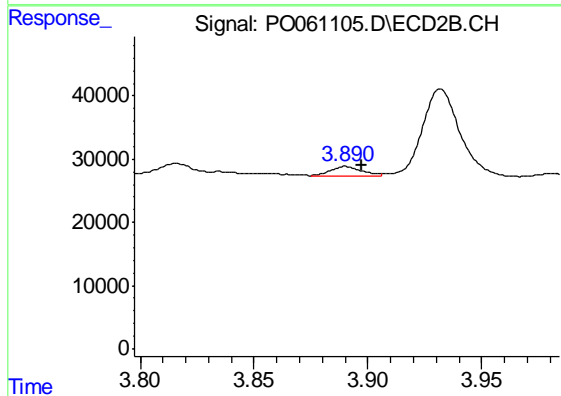
#10 AR-1221-3

R.T.: 3.890 min
 Delta R.T.: -0.007 min
 Response: 15364
 Conc: 18.51 ng/ml



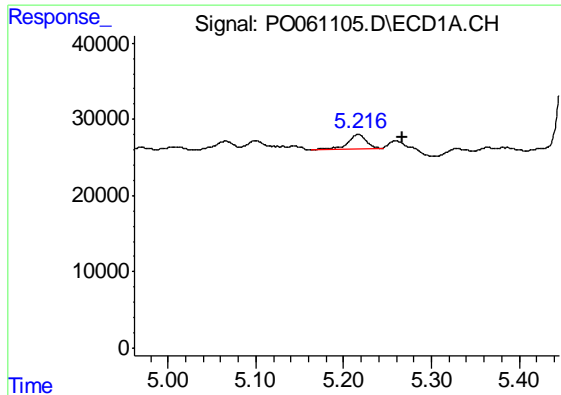
#11 AR-1232-1

R.T.: 0.000 min
 Exp R.T. : 4.741 min
 Response: 0
 Conc: N.D.



#11 AR-1232-1

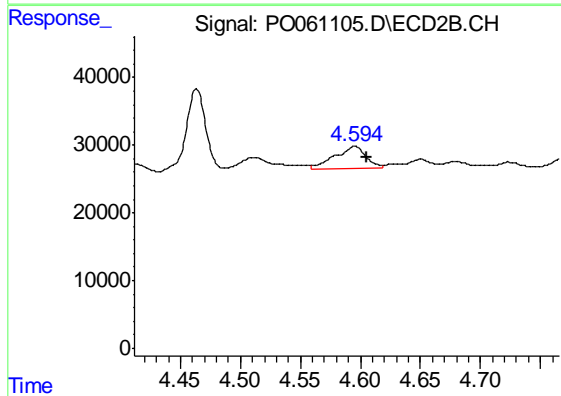
R.T.: 3.890 min
 Delta R.T.: -0.007 min
 Response: 15364
 Conc: 16.86 ng/ml



#12 AR-1232-2

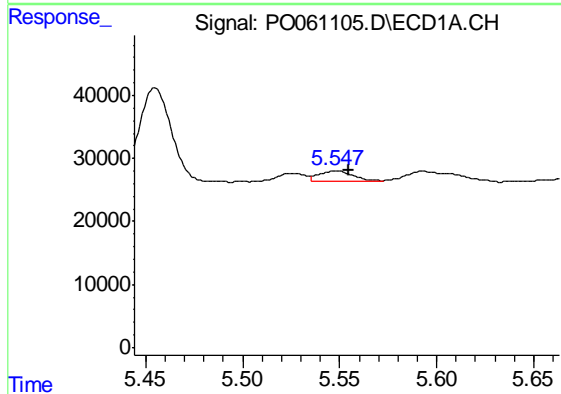
R.T.: 5.216 min
 Delta R.T.: -0.050 min
 Response: 29222
 Conc: 45.07 ng/ml

Instrument :
 ECD_O
 ClientSampled :
 CSA-2-6



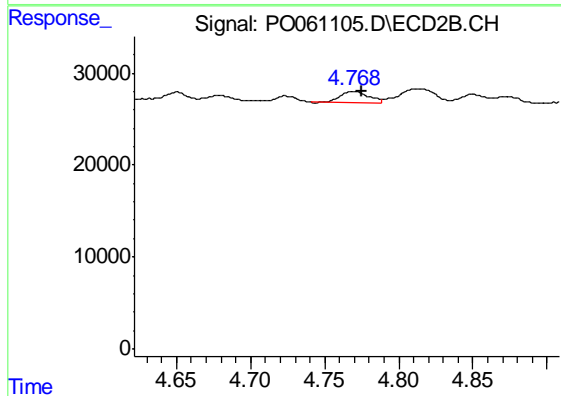
#12 AR-1232-2

R.T.: 4.595 min
 Delta R.T.: -0.010 min
 Response: 56196
 Conc: 55.66 ng/ml



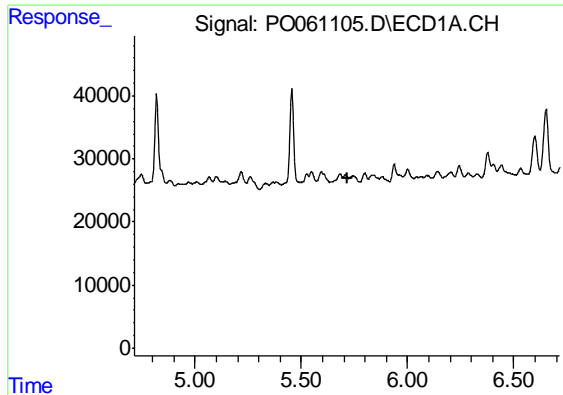
#13 AR-1232-3

R.T.: 5.548 min
 Delta R.T.: -0.007 min
 Response: 20345
 Conc: 15.19 ng/ml



#13 AR-1232-3

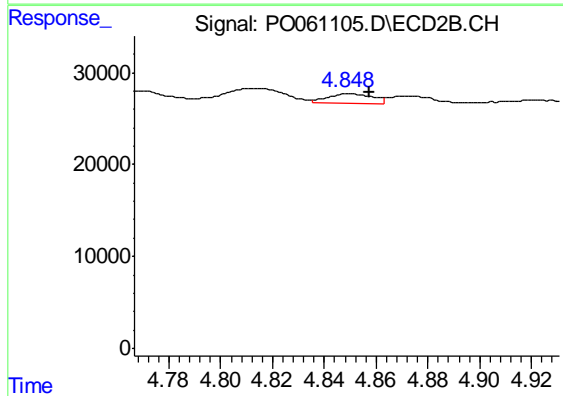
R.T.: 4.769 min
 Delta R.T.: -0.006 min
 Response: 16165
 Conc: 28.80 ng/ml



#14 AR-1232-4

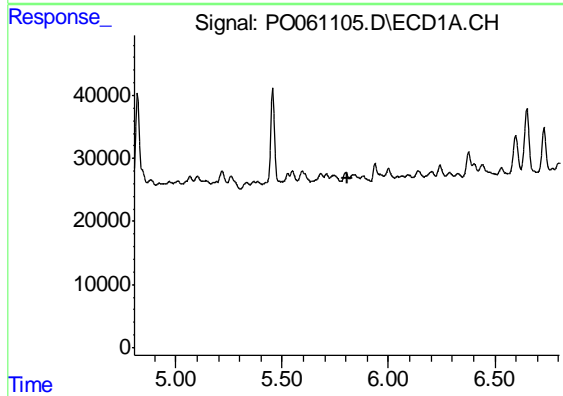
R.T.: 0.000 min
 Exp R.T. : 5.715 min
 Response: 0
 Conc: N.D.

Instrument :
 ECD_O
 ClientSampled :
 CSA-2-6



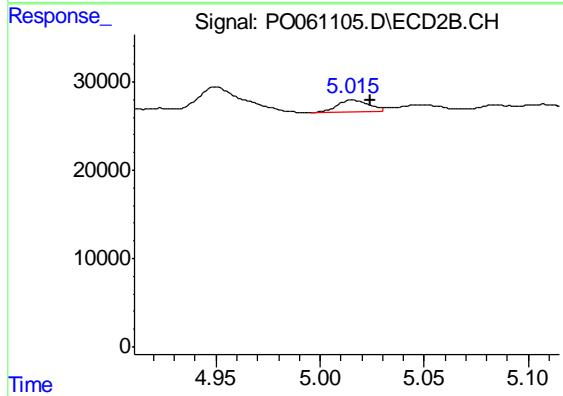
#14 AR-1232-4

R.T.: 4.849 min
 Delta R.T.: -0.008 min
 Response: 12224
 Conc: 23.41 ng/ml



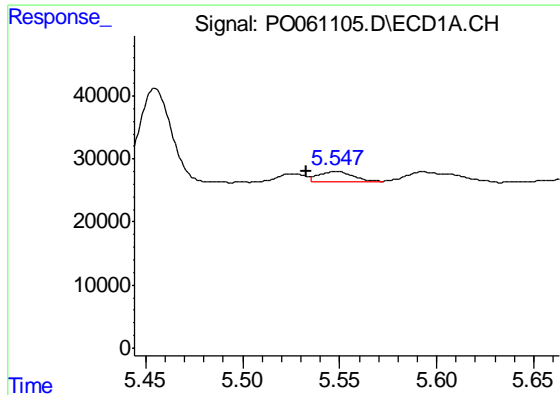
#15 AR-1232-5

R.T.: 0.000 min
 Exp R.T. : 5.805 min
 Response: 0
 Conc: N.D.



#15 AR-1232-5

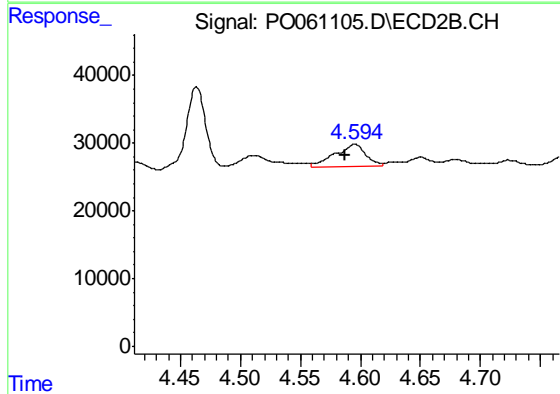
R.T.: 5.016 min
 Delta R.T.: -0.009 min
 Response: 14840
 Conc: 26.22 ng/ml



#16 AR-1242-1

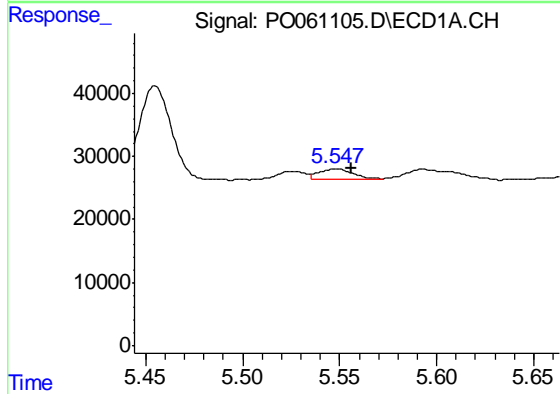
R.T.: 5.548 min
 Delta R.T.: 0.015 min
 Response: 20345
 Conc: 17.05 ng/ml

Instrument :
 ECD_O
 ClientSampled :
 CSA-2-6



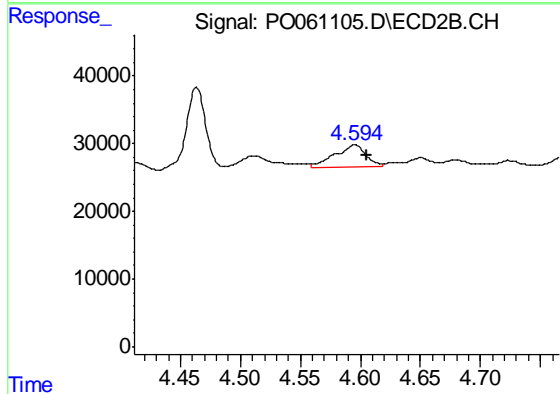
#16 AR-1242-1

R.T.: 4.595 min
 Delta R.T.: 0.008 min
 Response: 56196
 Conc: 61.73 ng/ml



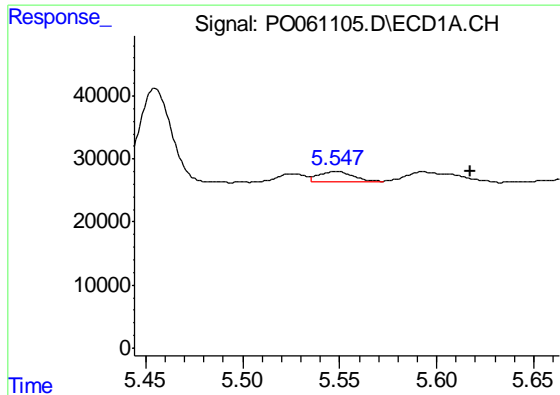
#17 AR-1242-2

R.T.: 5.548 min
 Delta R.T.: -0.008 min
 Response: 20345
 Conc: 11.90 ng/ml



#17 AR-1242-2

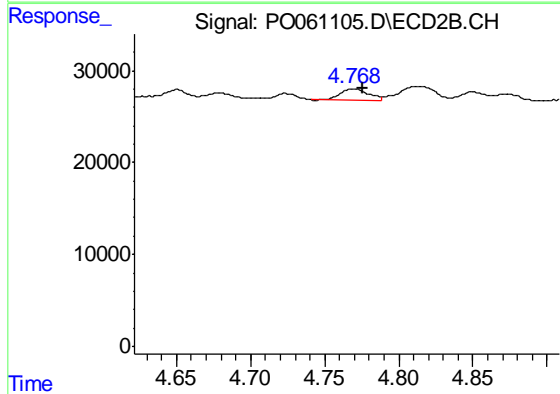
R.T.: 4.595 min
 Delta R.T.: -0.010 min
 Response: 56196
 Conc: 44.89 ng/ml



#18 AR-1242-3

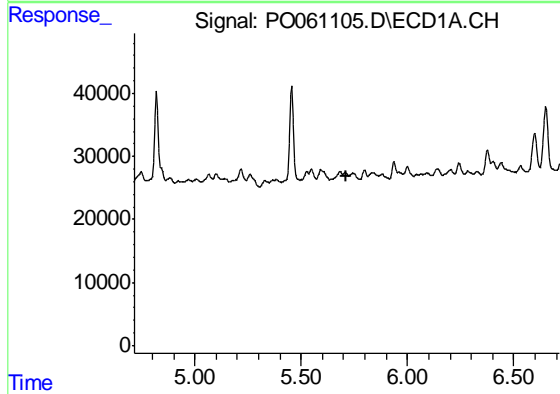
R.T.: 5.548 min
 Delta R.T.: -0.069 min
 Response: 20345
 Conc: 18.79 ng/ml

Instrument :
 ECD_O
 ClientSampled :
 CSA-2-6



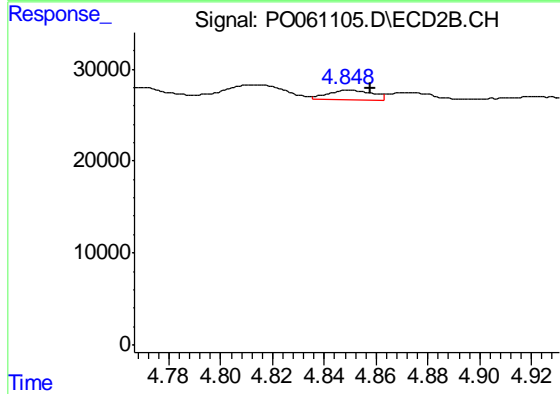
#18 AR-1242-3

R.T.: 4.769 min
 Delta R.T.: -0.007 min
 Response: 16165
 Conc: 22.62 ng/ml



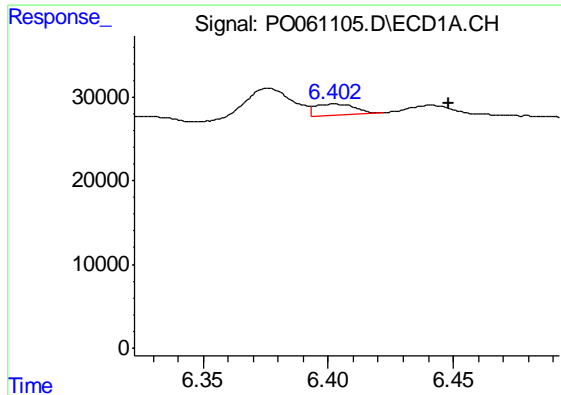
#19 AR-1242-4

R.T.: 0.000 min
 Exp R.T. : 5.715 min
 Response: 0
 Conc: N.D.



#19 AR-1242-4

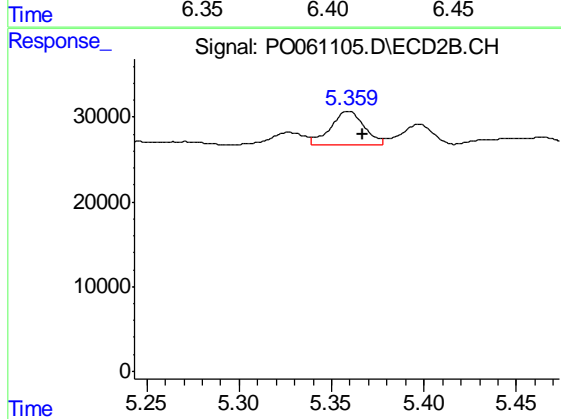
R.T.: 4.849 min
 Delta R.T.: -0.009 min
 Response: 12224
 Conc: 16.79 ng/ml



#20 AR-1242-5

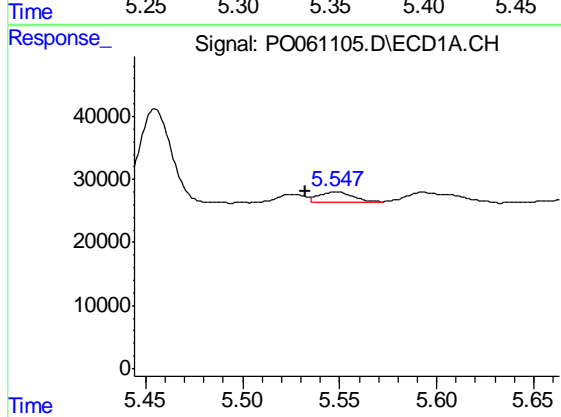
R.T.: 6.403 min
 Delta R.T.: -0.046 min
 Response: 14977
 Conc: 13.36 ng/ml

Instrument :
 ECD_O
 ClientSampled :
 CSA-2-6



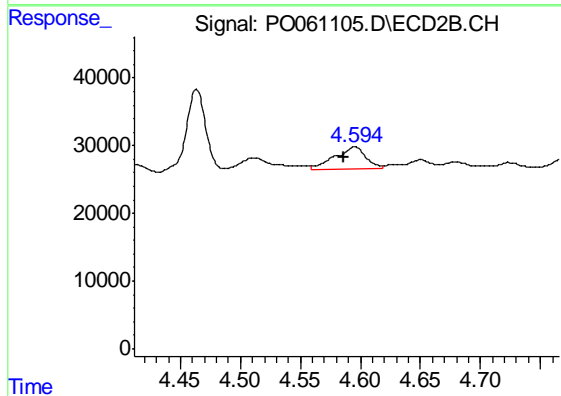
#20 AR-1242-5

R.T.: 5.359 min
 Delta R.T.: -0.007 min
 Response: 50215
 Conc: 50.73 ng/ml



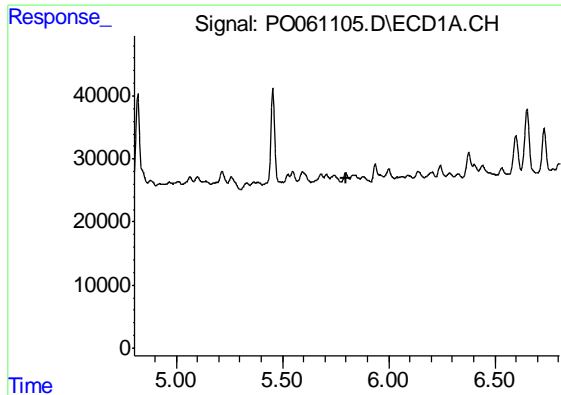
#21 AR-1248-1

R.T.: 5.548 min
 Delta R.T.: 0.016 min
 Response: 20345
 Conc: 22.10 ng/ml



#21 AR-1248-1

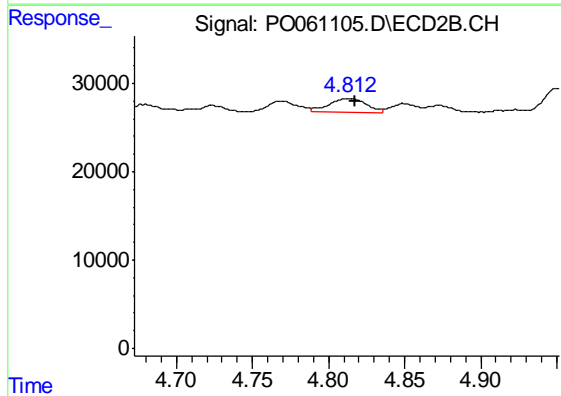
R.T.: 4.595 min
 Delta R.T.: 0.009 min
 Response: 56196
 Conc: 79.23 ng/ml



#22 AR-1248-2

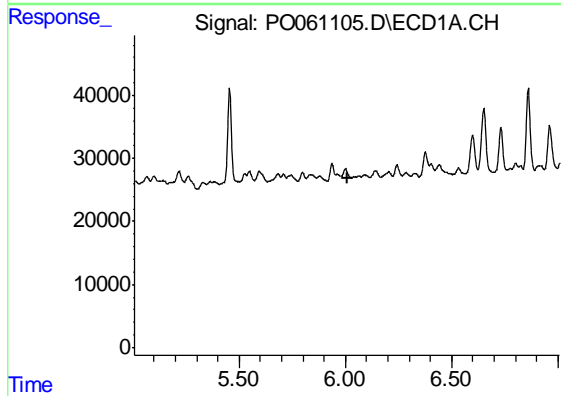
R.T.: 0.000 min
 Exp R.T. : 5.804 min
 Response: 0
 Conc: N.D.

Instrument :
 ECD_O
 ClientSampled :
 CSA-2-6



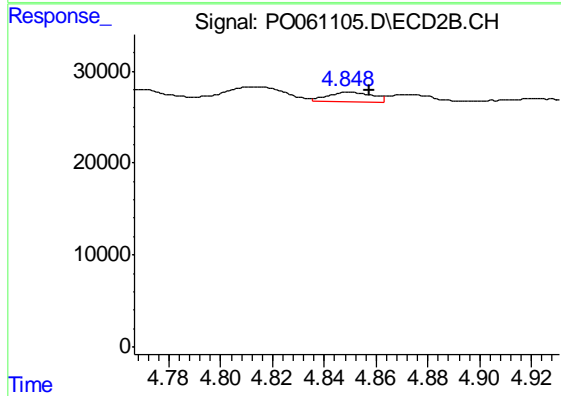
#22 AR-1248-2

R.T.: 4.812 min
 Delta R.T.: -0.005 min
 Response: 26957
 Conc: 27.90 ng/ml



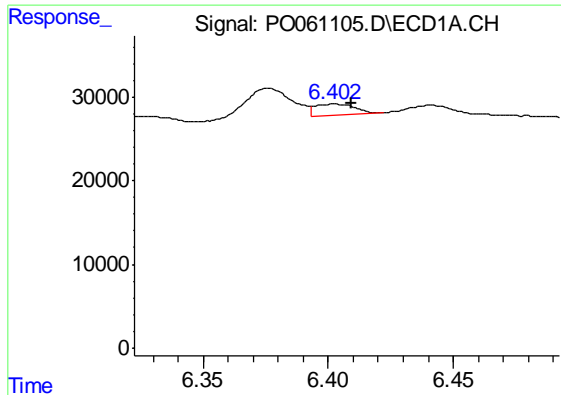
#23 AR-1248-3

R.T.: 0.000 min
 Exp R.T. : 6.007 min
 Response: 0
 Conc: N.D.



#23 AR-1248-3

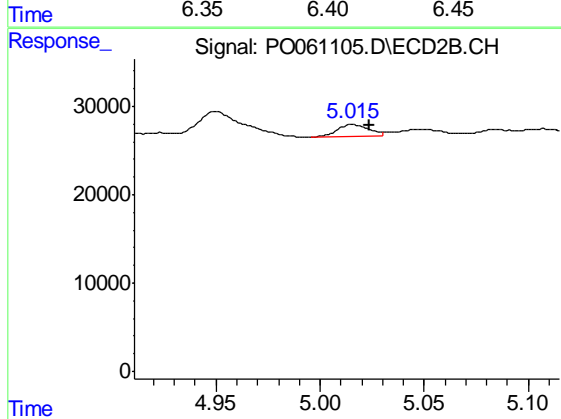
R.T.: 4.849 min
 Delta R.T.: -0.008 min
 Response: 12224
 Conc: 12.14 ng/ml



#24 AR-1248-4

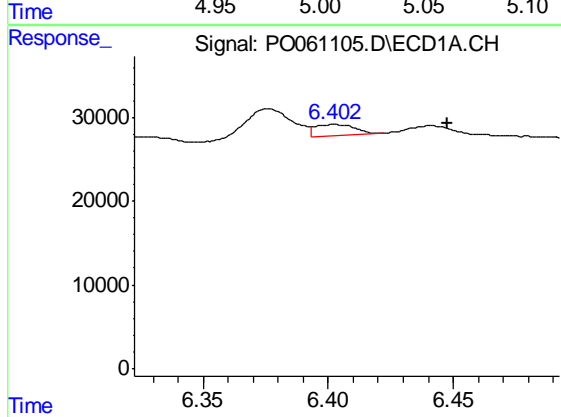
R.T.: 6.403 min
 Delta R.T.: -0.007 min
 Response: 14977
 Conc: 8.22 ng/ml

Instrument :
 ECD_O
 ClientSampled :
 CSA-2-6



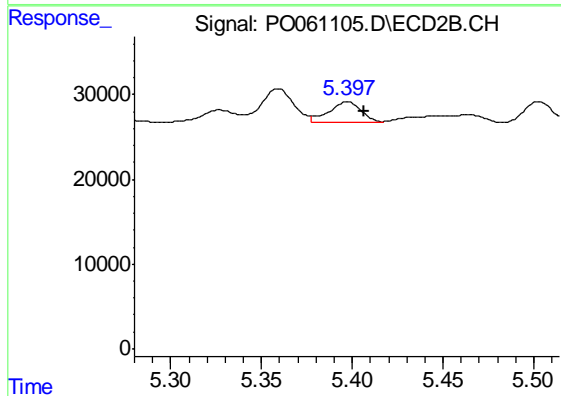
#24 AR-1248-4

R.T.: 5.016 min
 Delta R.T.: -0.008 min
 Response: 14840
 Conc: 12.36 ng/ml



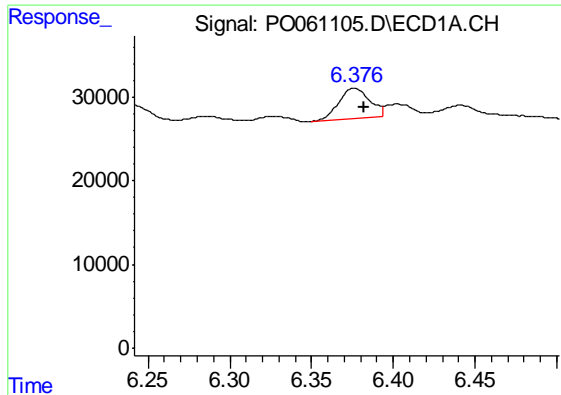
#25 AR-1248-5

R.T.: 6.403 min
 Delta R.T.: -0.045 min
 Response: 14977
 Conc: 8.56 ng/ml



#25 AR-1248-5

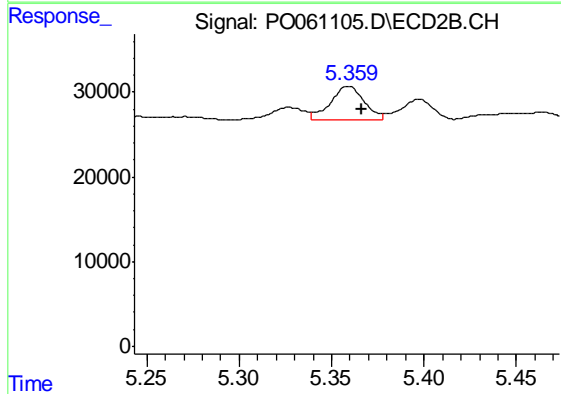
R.T.: 5.397 min
 Delta R.T.: -0.009 min
 Response: 30678
 Conc: 24.27 ng/ml



#26 AR-1254-1

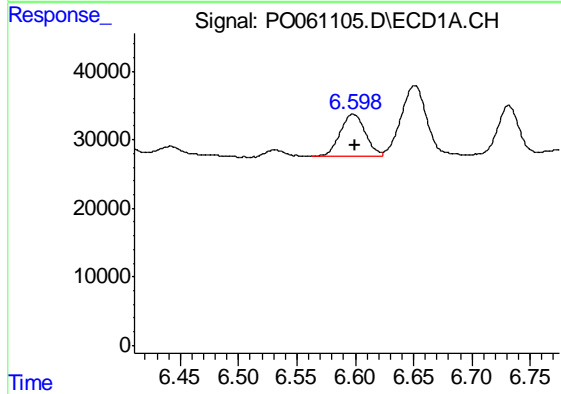
R.T.: 6.376 min
 Delta R.T.: -0.006 min
 Response: 47566
 Conc: 24.69 ng/ml

Instrument :
 ECD_O
 ClientSampleId :
 CSA-2-6



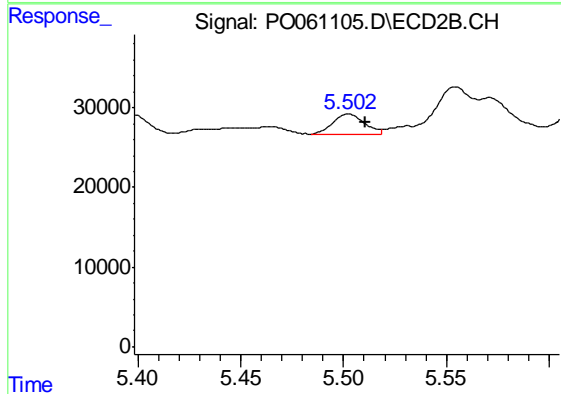
#26 AR-1254-1

R.T.: 5.359 min
 Delta R.T.: -0.007 min
 Response: 50215
 Conc: 24.37 ng/ml



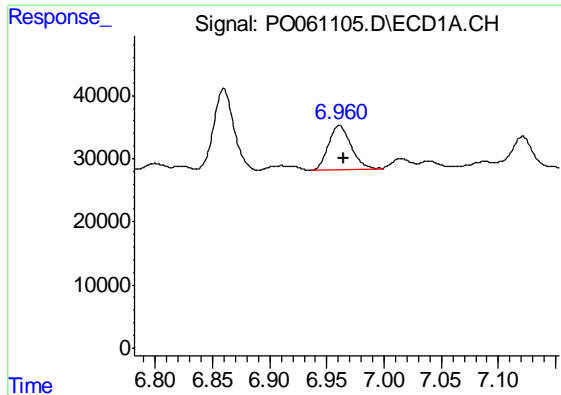
#27 AR-1254-2

R.T.: 6.598 min
 Delta R.T.: -0.002 min
 Response: 91841
 Conc: 29.18 ng/ml



#27 AR-1254-2

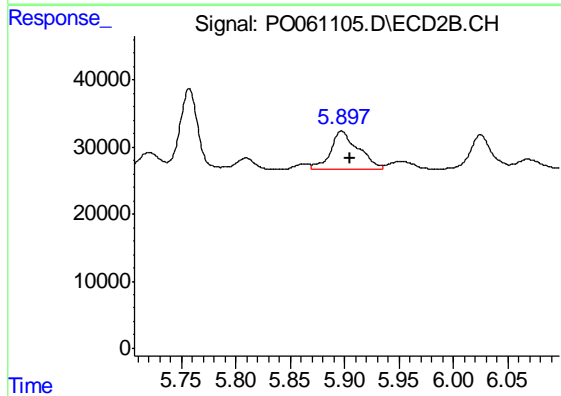
R.T.: 5.502 min
 Delta R.T.: -0.008 min
 Response: 27563
 Conc: 14.61 ng/ml



#28 AR-1254-3

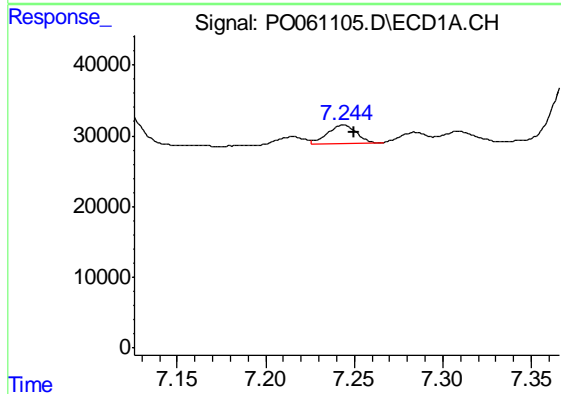
R.T.: 6.961 min
 Delta R.T.: -0.005 min
 Response: 96296
 Conc: 27.34 ng/ml

Instrument :
 ECD_O
 ClientSampleId :
 CSA-2-6



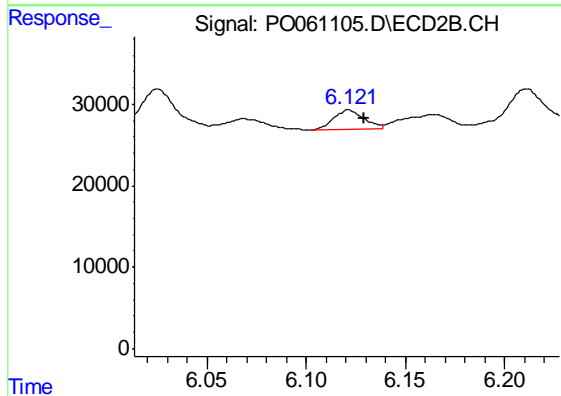
#28 AR-1254-3

R.T.: 5.897 min
 Delta R.T.: -0.008 min
 Response: 102032
 Conc: 32.09 ng/ml



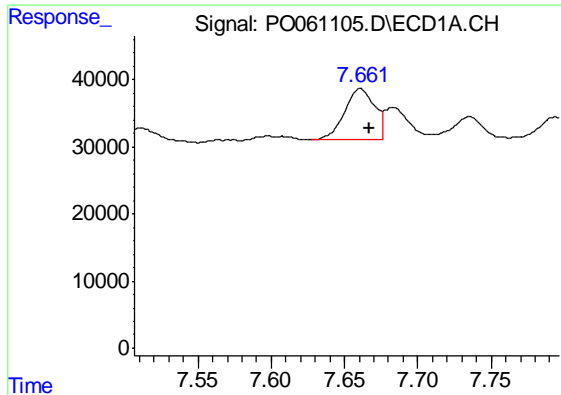
#29 AR-1254-4

R.T.: 7.244 min
 Delta R.T.: -0.006 min
 Response: 30023
 Conc: 11.09 ng/ml



#29 AR-1254-4

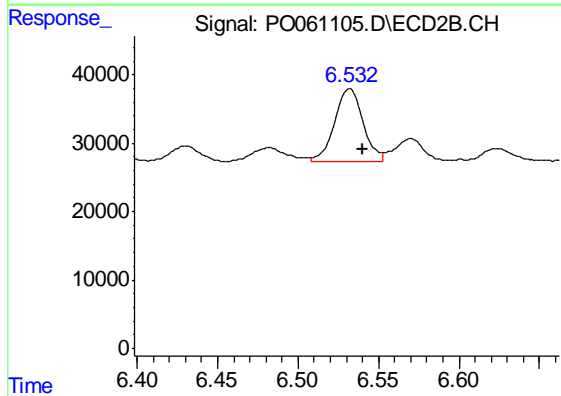
R.T.: 6.121 min
 Delta R.T.: -0.008 min
 Response: 25562
 Conc: 12.28 ng/ml



#30 AR-1254-5

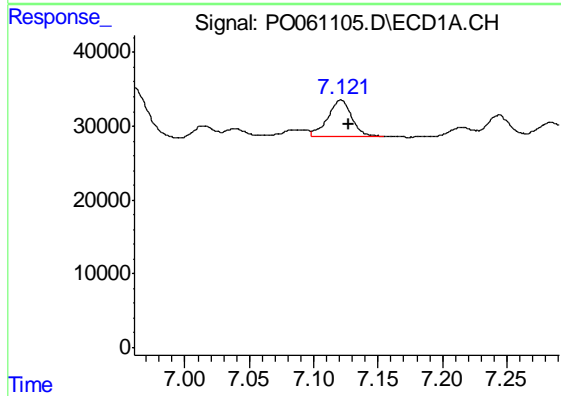
R.T.: 7.661 min
 Delta R.T.: -0.006 min
 Response: 108009
 Conc: 36.63 ng/ml

Instrument :
 ECD_O
 ClientSampleId :
 CSA-2-6



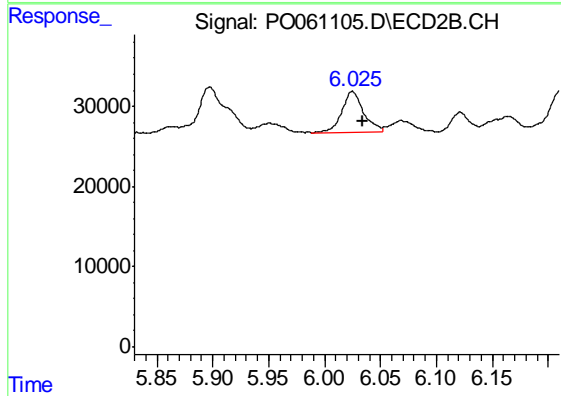
#30 AR-1254-5

R.T.: 6.532 min
 Delta R.T.: -0.008 min
 Response: 129463
 Conc: 40.91 ng/ml



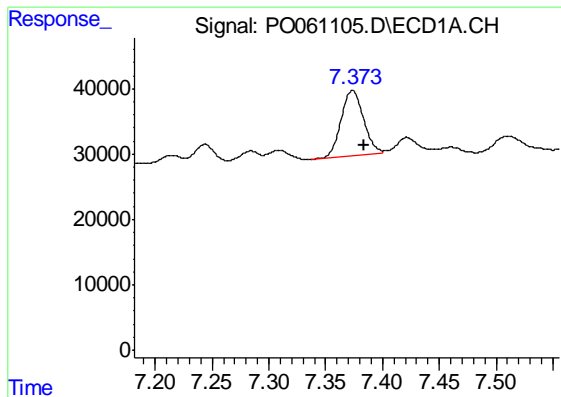
#31 AR-1260-1

R.T.: 7.121 min
 Delta R.T.: -0.006 min
 Response: 63200
 Conc: 25.96 ng/ml



#31 AR-1260-1

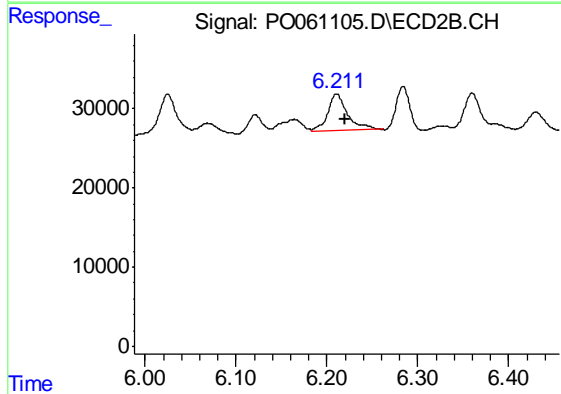
R.T.: 6.025 min
 Delta R.T.: -0.010 min
 Response: 69626
 Conc: 33.10 ng/ml



#32 AR-1260-2

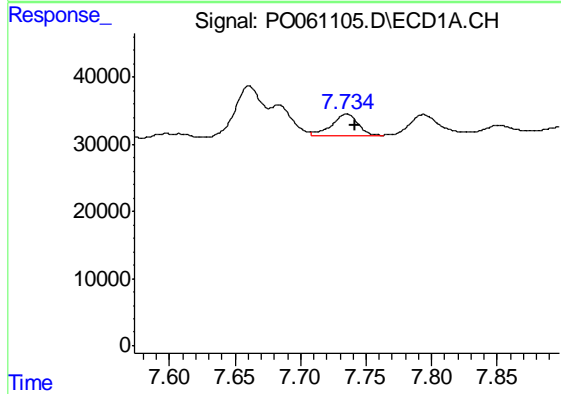
R.T.: 7.374 min
 Delta R.T.: -0.011 min
 Response: 138279
 Conc: 45.74 ng/ml

Instrument :
 ECD_O
 ClientSampled :
 CSA-2-6



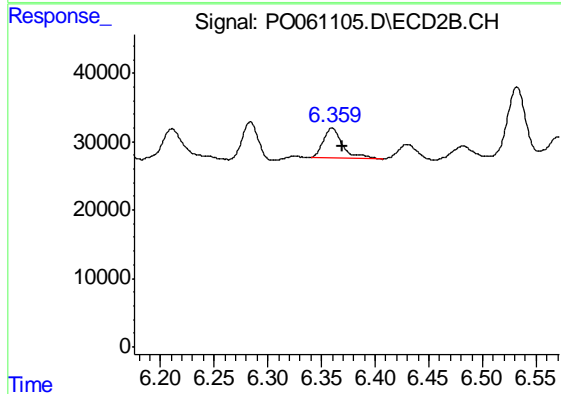
#32 AR-1260-2

R.T.: 6.211 min
 Delta R.T.: -0.009 min
 Response: 71744
 Conc: 27.81 ng/ml



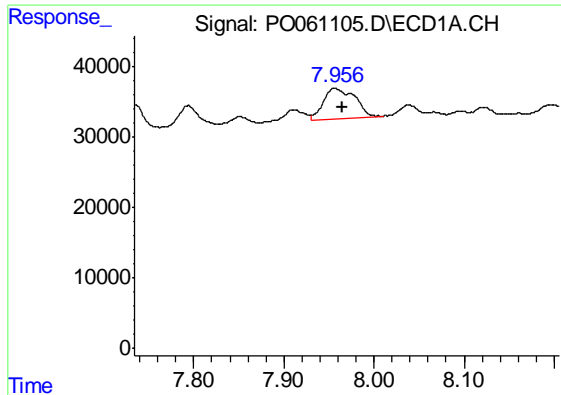
#33 AR-1260-3

R.T.: 7.735 min
 Delta R.T.: -0.006 min
 Response: 45837
 Conc: 19.21 ng/ml



#33 AR-1260-3

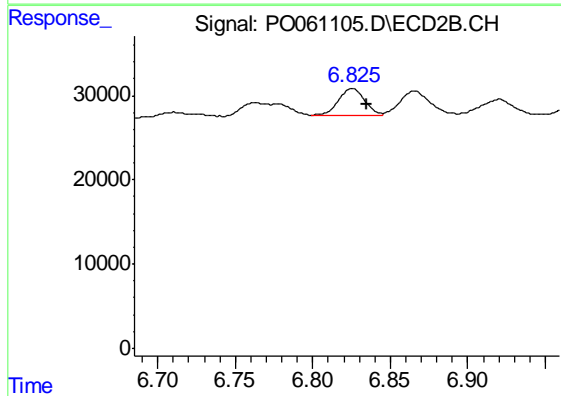
R.T.: 6.360 min
 Delta R.T.: -0.010 min
 Response: 55498
 Conc: 23.05 ng/ml



#34 AR-1260-4

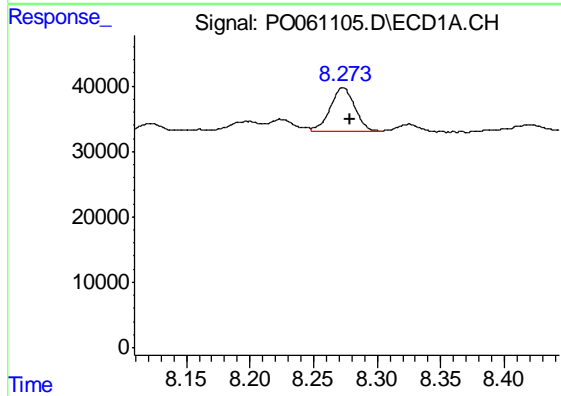
R.T.: 7.956 min
 Delta R.T.: -0.009 min
 Response: 106630
 Conc: 38.11 ng/ml

Instrument :
 ECD_O
 ClientSampled :
 CSA-2-6



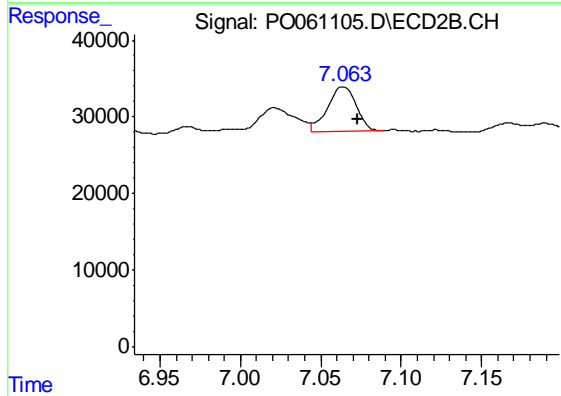
#34 AR-1260-4

R.T.: 6.825 min
 Delta R.T.: -0.009 min
 Response: 38268
 Conc: 17.88 ng/ml



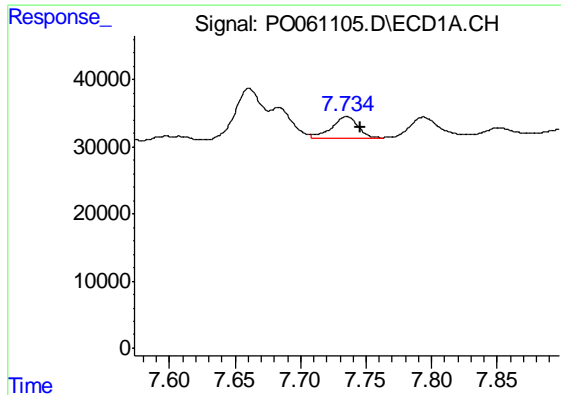
#35 AR-1260-5

R.T.: 8.273 min
 Delta R.T.: -0.006 min
 Response: 88667
 Conc: 16.28 ng/ml



#35 AR-1260-5

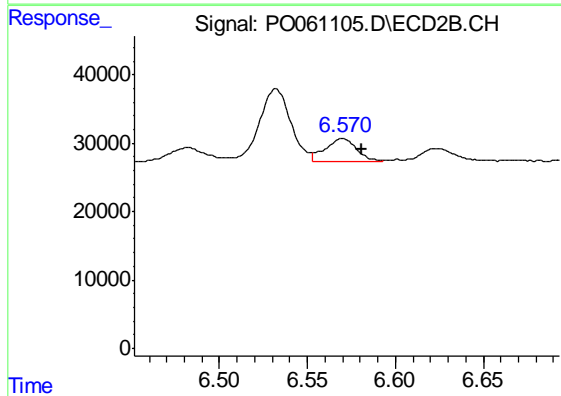
R.T.: 7.064 min
 Delta R.T.: -0.009 min
 Response: 71439
 Conc: 14.78 ng/ml



#36 AR-1262-1

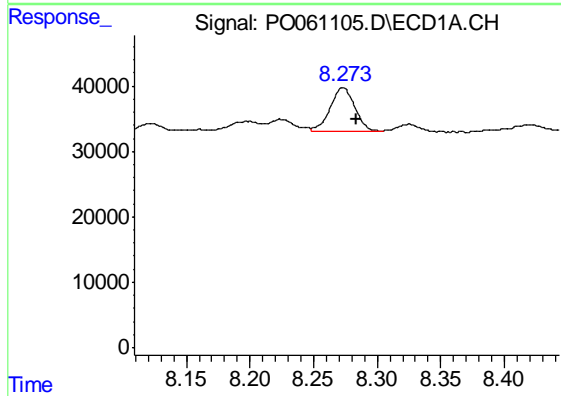
R.T.: 7.735 min
 Delta R.T.: -0.010 min
 Response: 45837
 Conc: 12.98 ng/ml

Instrument :
 ECD_O
 ClientSampled :
 CSA-2-6



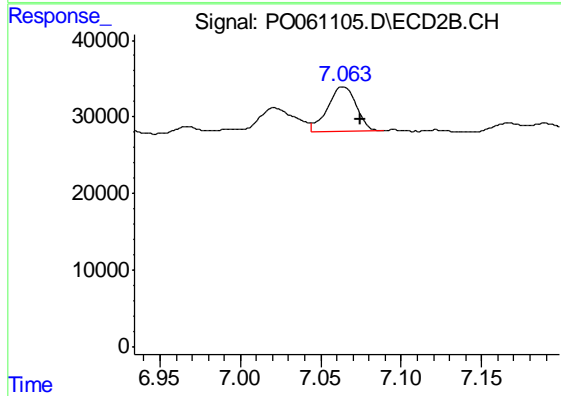
#36 AR-1262-1

R.T.: 6.570 min
 Delta R.T.: -0.011 min
 Response: 40961
 Conc: 13.71 ng/ml



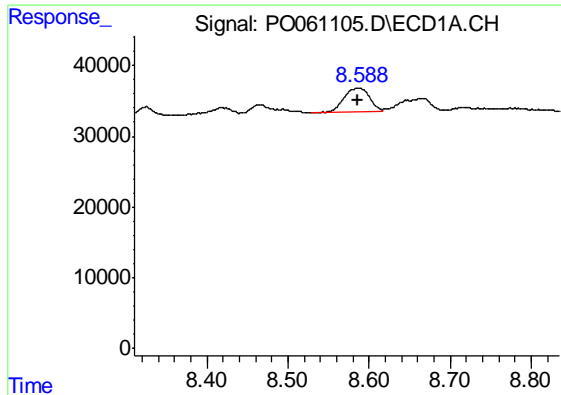
#37 AR-1262-2

R.T.: 8.273 min
 Delta R.T.: -0.010 min
 Response: 88667
 Conc: 14.22 ng/ml



#37 AR-1262-2

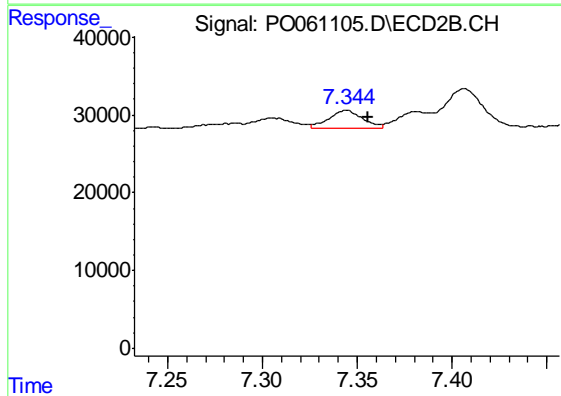
R.T.: 7.064 min
 Delta R.T.: -0.011 min
 Response: 71439
 Conc: 13.74 ng/ml



#38 AR-1262-3

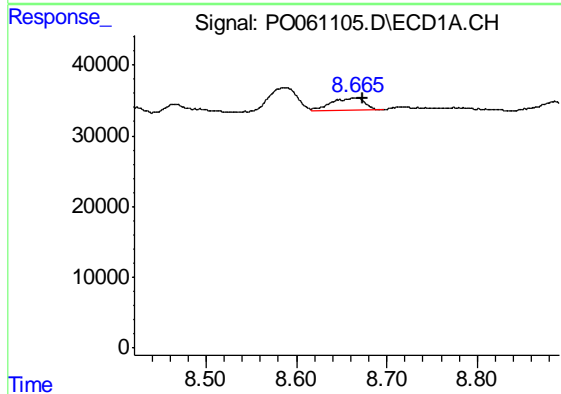
R.T.: 8.588 min
 Delta R.T.: 0.001 min
 Response: 73282
 Conc: 17.20 ng/ml

Instrument :
 ECD_O
 ClientSampleId :
 CSA-2-6



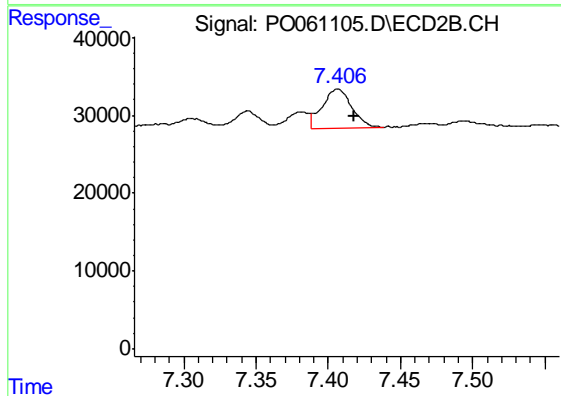
#38 AR-1262-3

R.T.: 7.345 min
 Delta R.T.: -0.011 min
 Response: 28952
 Conc: 13.64 ng/ml



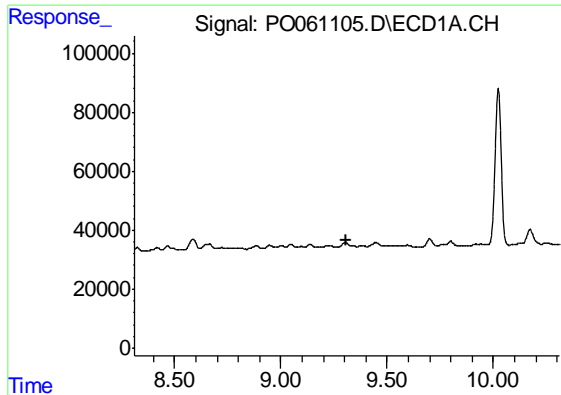
#39 AR-1262-4

R.T.: 8.665 min
 Delta R.T.: -0.008 min
 Response: 45814
 Conc: 14.05 ng/ml



#39 AR-1262-4

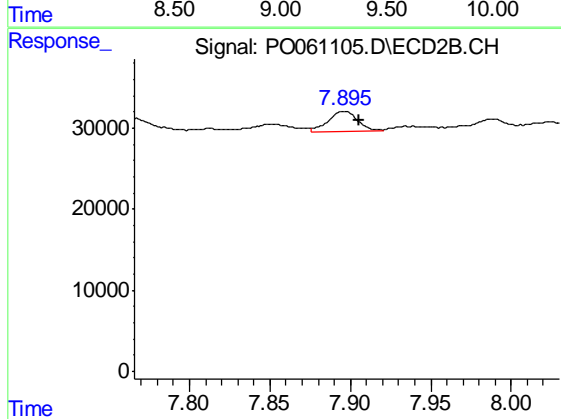
R.T.: 7.407 min
 Delta R.T.: -0.011 min
 Response: 71692
 Conc: 18.77 ng/ml



#40 AR-1262-5

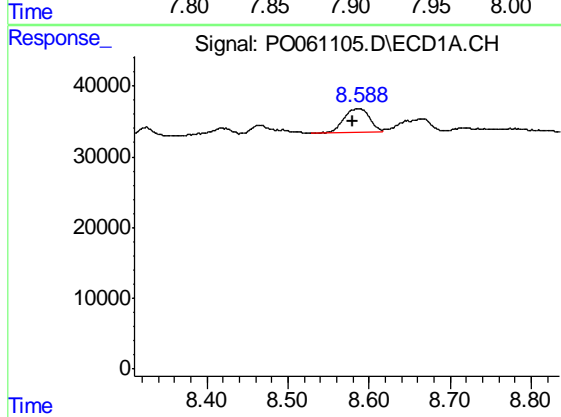
R.T.: 0.000 min
 Exp R.T. : 9.311 min
 Response: 0
 Conc: N.D.

Instrument :
 ECD_O
 ClientSampled :
 CSA-2-6



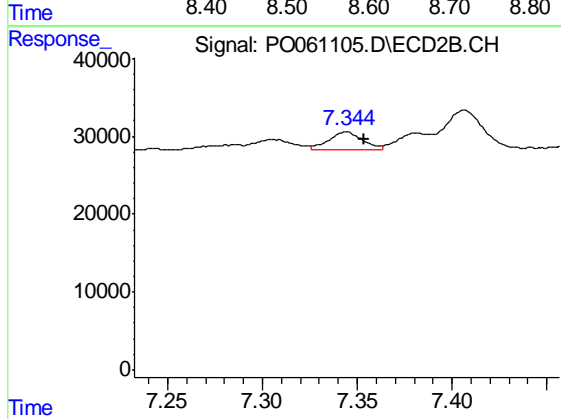
#40 AR-1262-5

R.T.: 7.896 min
 Delta R.T.: -0.009 min
 Response: 31940
 Conc: 19.08 ng/ml



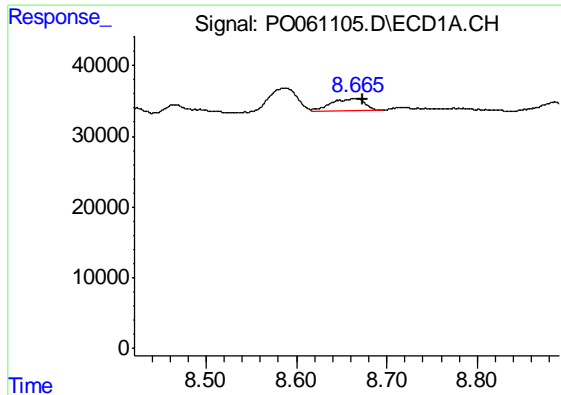
#41 AR-1268-1

R.T.: 8.588 min
 Delta R.T.: 0.008 min
 Response: 73282
 Conc: 9.93 ng/ml



#41 AR-1268-1

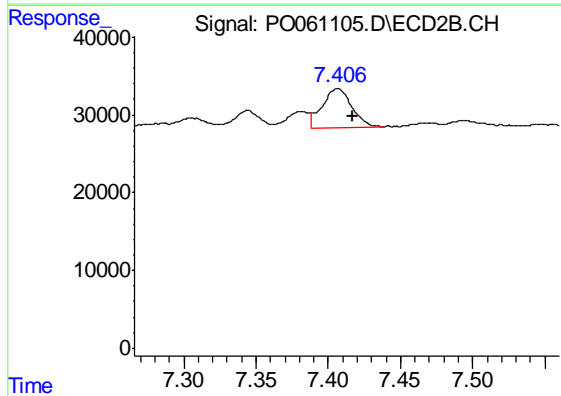
R.T.: 7.345 min
 Delta R.T.: -0.009 min
 Response: 28952
 Conc: 4.94 ng/ml



#42 AR-1268-2

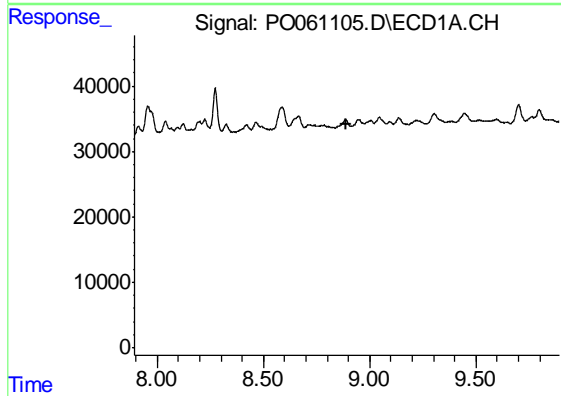
R.T.: 8.665 min
 Delta R.T.: -0.008 min
 Response: 45814
 Conc: 6.78 ng/ml

Instrument :
 ECD_O
 ClientSampleId :
 CSA-2-6



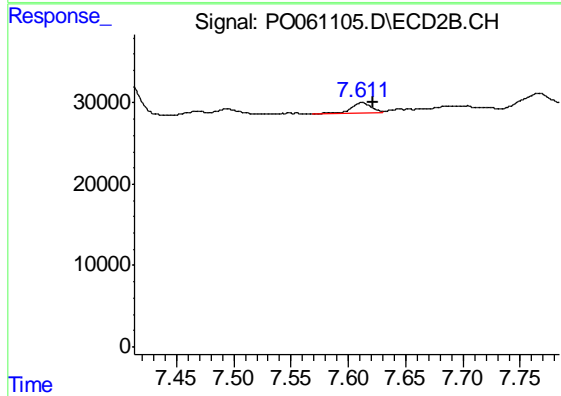
#42 AR-1268-2

R.T.: 7.407 min
 Delta R.T.: -0.010 min
 Response: 71692
 Conc: 13.45 ng/ml



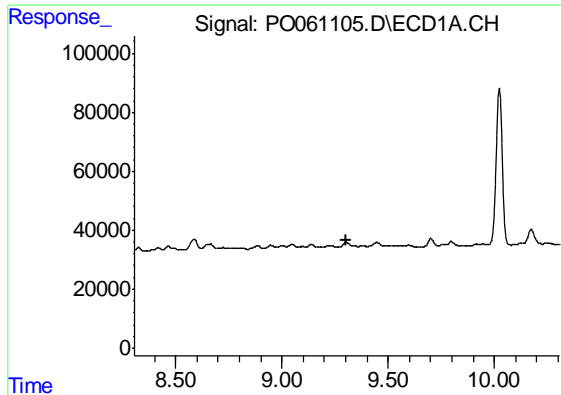
#43 AR-1268-3

R.T.: 0.000 min
 Exp R.T. : 8.893 min
 Response: 0
 Conc: N.D.



#43 AR-1268-3

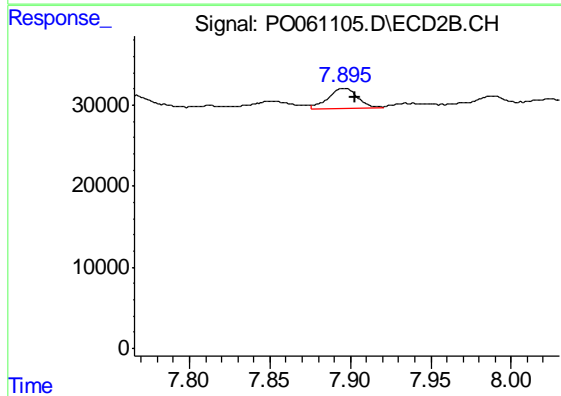
R.T.: 7.612 min
 Delta R.T.: -0.010 min
 Response: 17757
 Conc: 4.01 ng/ml



#44 AR-1268-4

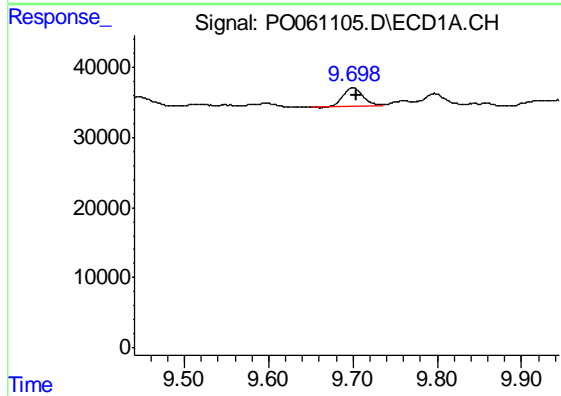
R.T.: 0.000 min
 Exp R.T. : 9.306 min
 Response: 0
 Conc: N.D.

Instrument :
 ECD_O
 ClientSampled :
 CSA-2-6



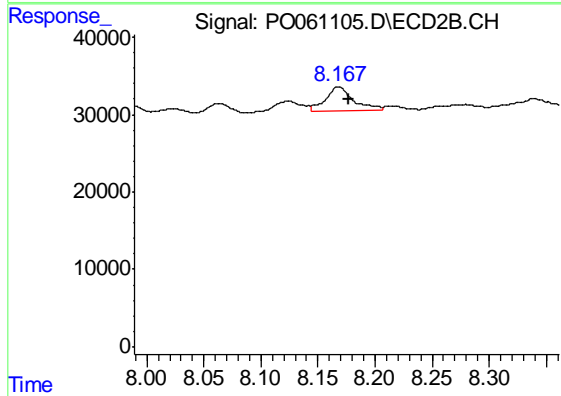
#44 AR-1268-4

R.T.: 7.896 min
 Delta R.T.: -0.007 min
 Response: 31940
 Conc: 16.71 ng/ml



#45 AR-1268-5

R.T.: 9.699 min
 Delta R.T.: -0.005 min
 Response: 41178
 Conc: 2.60 ng/ml



#45 AR-1268-5

R.T.: 8.168 min
 Delta R.T.: -0.008 min
 Response: 55027
 Conc: 4.57 ng/ml