

Data Path : Z:\pestpcbsrv\HPCHEM1\ECD\_0\Data\P0091823\  
 Data File : P0098109.D  
 Signal(s) : Signal #1: ECD1A.ch Signal #2: ECD2B.ch  
 Acq On : 18 Sep 2023 23:20  
 Operator : YP/AJ  
 Sample : AR1268ICC250  
 Misc :  
 ALS Vial : 29 Sample Multiplier: 1

Instrument :  
 ECD\_0  
 ClientSampleId :

Integration File signal 1: autoint1.e  
 Integration File signal 2: autoint2.e  
 Quant Time: Sep 19 01:54:06 2023  
 Quant Method : Z:\pestpcbsrv\HPCHEM1\ECD\_0\methods\P0091823.M  
 Quant Title : GC EXTRACTABLES  
 QLast Update : Tue Sep 19 01:49:48 2023  
 Response via : Initial Calibration  
 Integrator: ChemStation

Volume Inj. : 2 µl  
 Signal #1 Phase : ZB-MR1 Signal #2 Phase: ZB-MR2  
 Signal #1 Info : 30Mx0.32mmx 0.50µ Signal #2 Info : 30M x 0.32mm x 0.25µm

Compound	RT#1	RT#2	Resp#1	Resp#2	ng/ml	ng/ml
-----						
System Monitoring Compounds						
1) SA Tetrachlo...	4.499	3.612	82614124	40251139	25.576	25.772
2) SA Decachlor...	10.348	8.633	83357953	44444454	25.169	26.401
Target Compounds						
41) L9 AR-1268-1	8.791	7.531	72438640	45414676	253.375	275.117
42) L9 AR-1268-2	8.888	7.595	63966056	39119389	253.289	264.784
43) L9 AR-1268-3	9.124	7.894	55473198	9326749	252.940	269.035
44) L9 AR-1268-4	9.563	8.091	22790856	14579160	248.930	265.389
45) L9 AR-1268-5	9.994	8.380	179.7E6	92204818	250.457	256.029
-----						

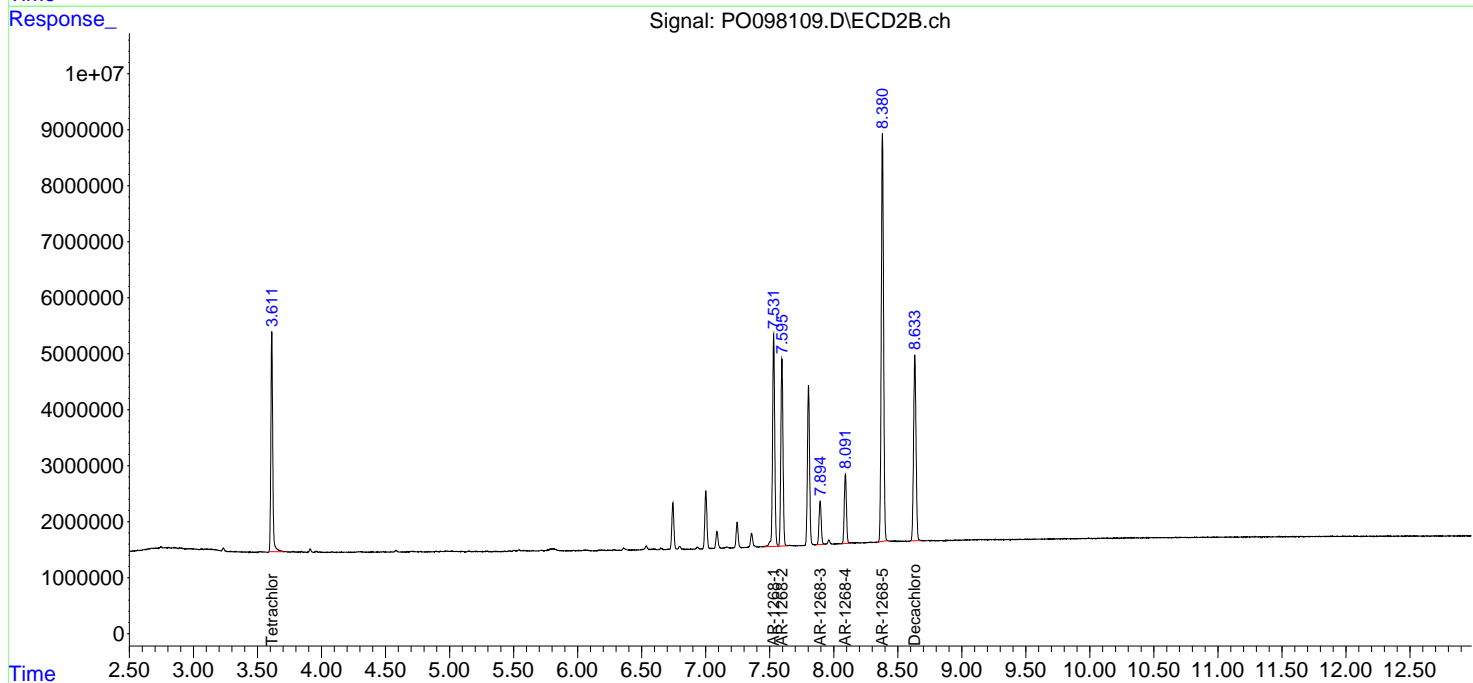
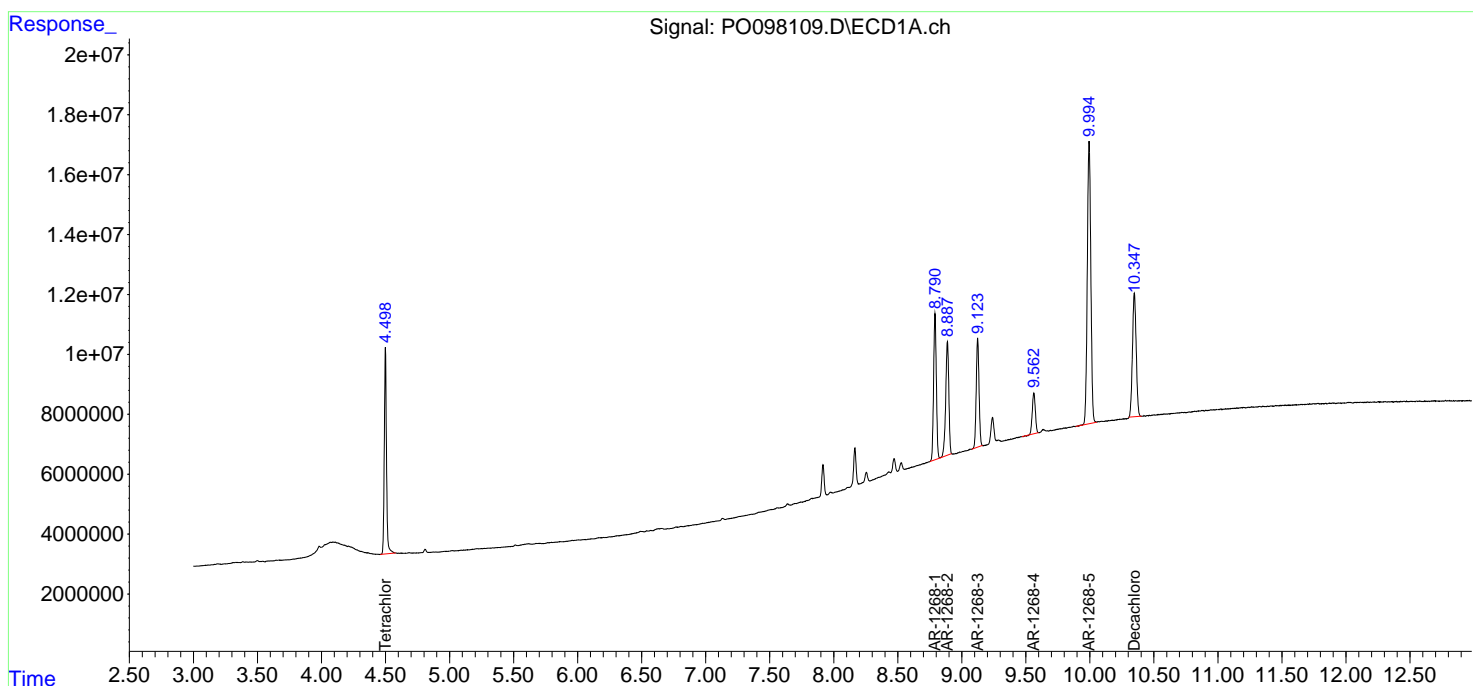
(f)=RT Delta > 1/2 Window (#)=Amounts differ by > 25% (m)=manual int.

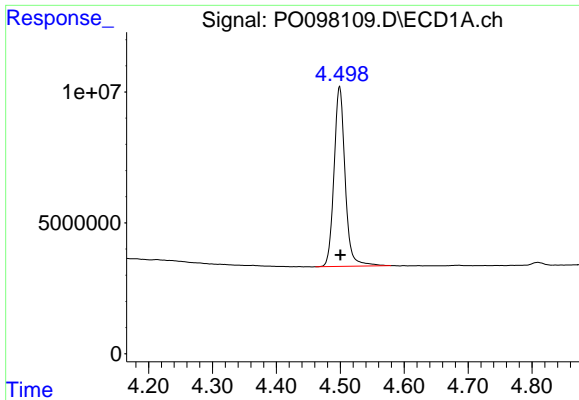
Data Path : Z:\pestpcbsrv\HPCHEM1\ECD\_O\Data\PO091823\  
 Data File : PO098109.D  
 Signal(s) : Signal #1: ECD1A.ch Signal #2: ECD2B.ch  
 Acq On : 18 Sep 2023 23:20  
 Operator : YP/AJ  
 Sample : AR1268ICC250  
 Misc :  
 ALS Vial : 29 Sample Multiplier: 1

Instrument :  
 ECD\_O  
 ClientSampleId :

Integration File signal 1: autoint1.e  
 Integration File signal 2: autoint2.e  
 Quant Time: Sep 19 01:54:06 2023  
 Quant Method : Z:\pestpcbsrv\HPCHEM1\ECD\_O\methods\PO091823.M  
 Quant Title : GC EXTRACTABLES  
 QLast Update : Tue Sep 19 01:49:48 2023  
 Response via : Initial Calibration  
 Integrator: ChemStation

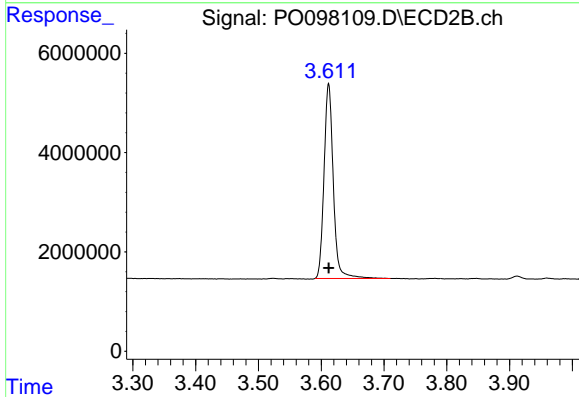
Volume Inj. : 2 µl  
 Signal #1 Phase : ZB-MR1 Signal #2 Phase: ZB-MR2  
 Signal #1 Info : 30Mx0.32mmx 0.50µ Signal #2 Info : 30M x 0.32mm x 0.25µm



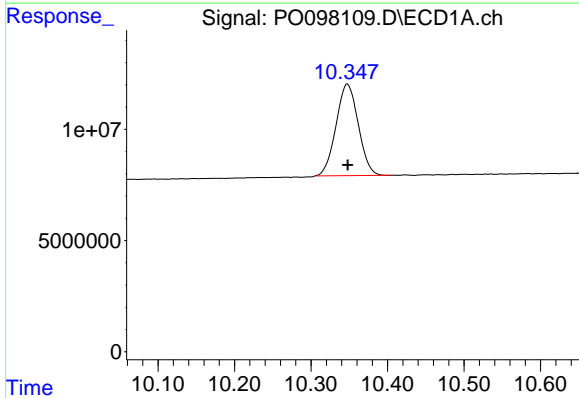


#1 Tetrachloro-m-xylene  
 R.T.: 4.499 min  
 Delta R.T.: 0.000 min  
 Response: 82614124  
 Conc: 25.58 ng/ml

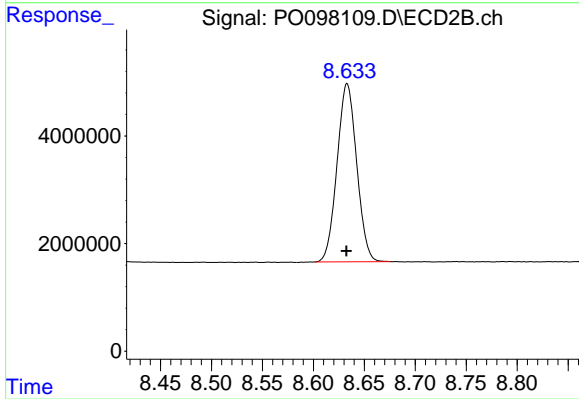
Instrument :  
 ECD\_O  
 ClientSampleId :



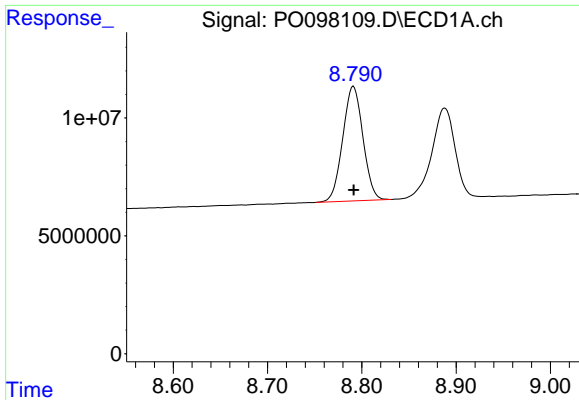
#1 Tetrachloro-m-xylene  
 R.T.: 3.612 min  
 Delta R.T.: 0.000 min  
 Response: 40251139  
 Conc: 25.77 ng/ml



#2 Decachlorobiphenyl  
 R.T.: 10.348 min  
 Delta R.T.: 0.000 min  
 Response: 83357953  
 Conc: 25.17 ng/ml



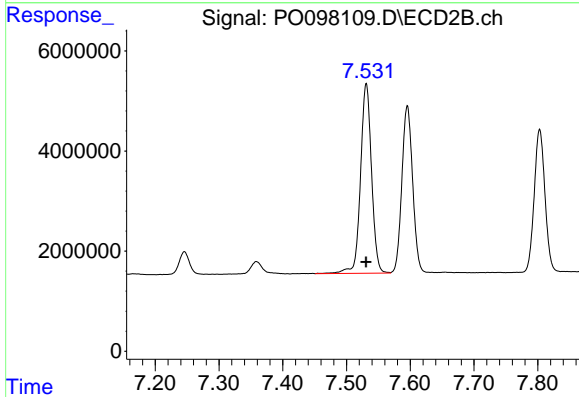
#2 Decachlorobiphenyl  
 R.T.: 8.633 min  
 Delta R.T.: 0.000 min  
 Response: 44444454  
 Conc: 26.40 ng/ml



#41 AR-1268-1

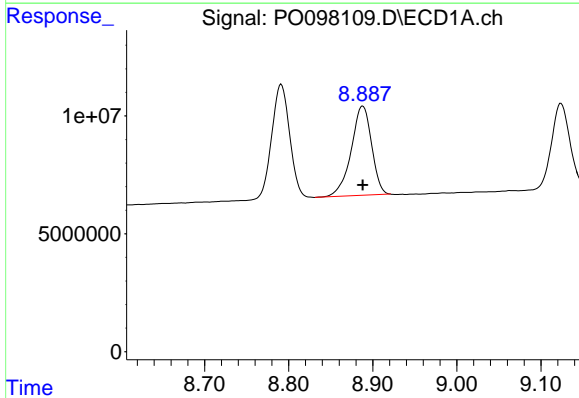
R.T.: 8.791 min  
 Delta R.T.: 0.000 min  
 Response: 72438640  
 Conc: 253.37 ng/ml

Instrument :  
 ECD\_O  
 ClientSampleId :



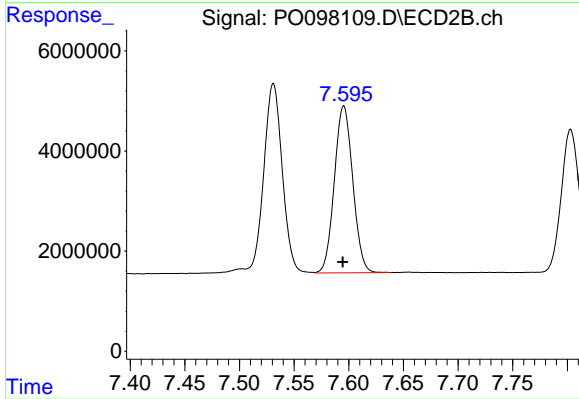
#41 AR-1268-1

R.T.: 7.531 min  
 Delta R.T.: 0.000 min  
 Response: 45414676  
 Conc: 275.12 ng/ml



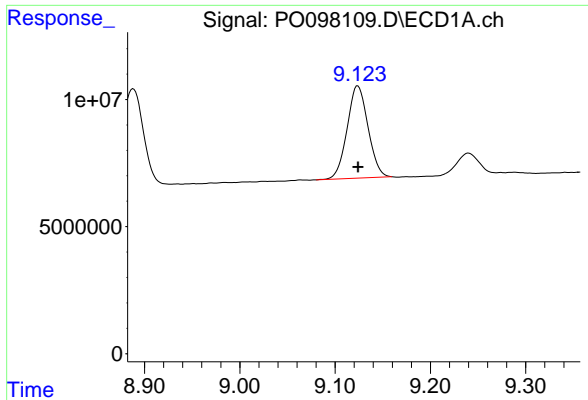
#42 AR-1268-2

R.T.: 8.888 min  
 Delta R.T.: 0.000 min  
 Response: 63966056  
 Conc: 253.29 ng/ml



#42 AR-1268-2

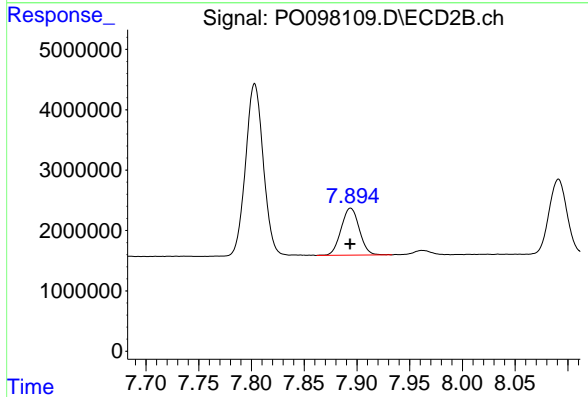
R.T.: 7.595 min  
 Delta R.T.: 0.000 min  
 Response: 39119389  
 Conc: 264.78 ng/ml



#43 AR-1268-3

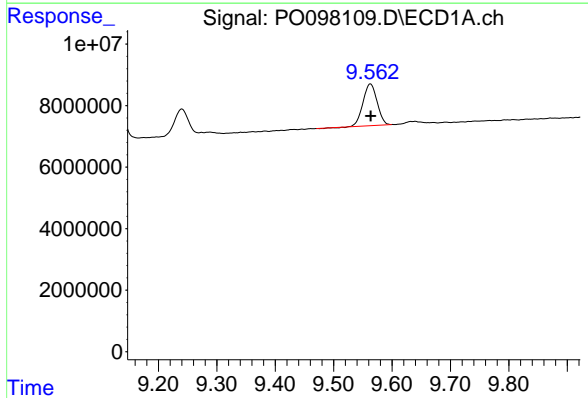
R.T.: 9.124 min  
 Delta R.T.: 0.000 min  
 Response: 55473198  
 Conc: 252.94 ng/ml

Instrument :  
 ECD\_O  
 ClientSampleId :



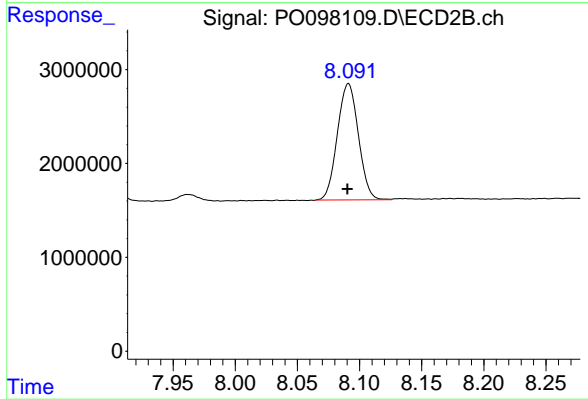
#43 AR-1268-3

R.T.: 7.894 min  
 Delta R.T.: 0.000 min  
 Response: 9326749  
 Conc: 269.04 ng/ml



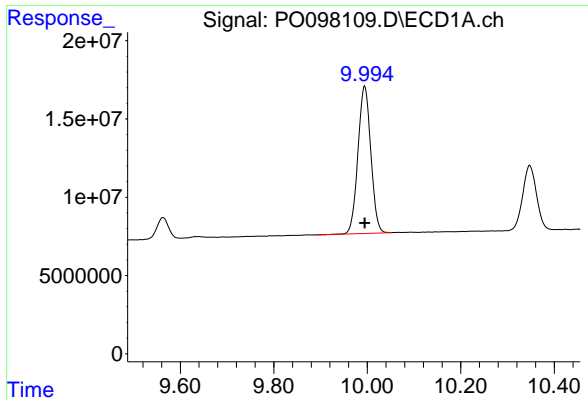
#44 AR-1268-4

R.T.: 9.563 min  
 Delta R.T.: 0.000 min  
 Response: 22790856  
 Conc: 248.93 ng/ml



#44 AR-1268-4

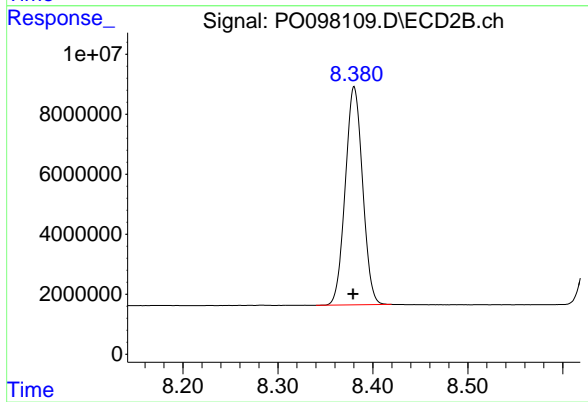
R.T.: 8.091 min  
 Delta R.T.: 0.000 min  
 Response: 14579160  
 Conc: 265.39 ng/ml



#45 AR-1268-5

R.T.: 9.994 min  
Delta R.T.: 0.000 min  
Response: 179653833  
Conc: 250.46 ng/ml

Instrument :  
ECD\_O  
ClientSampleId :



#45 AR-1268-5

R.T.: 8.380 min  
Delta R.T.: 0.001 min  
Response: 92204818  
Conc: 256.03 ng/ml