

Data Path : Z:\pestpcbsrv\HPCHEM1\ECD\_0\Data\P0091823\  
 Data File : P0098099.D  
 Signal(s) : Signal #1: ECD1A.ch Signal #2: ECD2B.ch  
 Acq On : 18 Sep 2023 20:31  
 Operator : YP/AJ  
 Sample : AR1248ICC050  
 Misc :  
 ALS Vial : 19 Sample Multiplier: 1

Instrument :  
 ECD\_0  
 ClientSampleId :  
 AR1248ICC050

Integration File signal 1: autoint1.e  
 Integration File signal 2: autoint2.e  
 Quant Time: Sep 18 20:53:34 2023  
 Quant Method : Z:\pestpcbsrv\HPCHEM1\ECD\_0\methods\P0091823.M  
 Quant Title : GC EXTRACTABLES  
 QLast Update : Mon Sep 18 20:53:24 2023  
 Response via : Initial Calibration  
 Integrator: ChemStation

Volume Inj. : 2 µl  
 Signal #1 Phase : ZB-MR1 Signal #2 Phase: ZB-MR2  
 Signal #1 Info : 30Mx0.32mmx 0.50µ Signal #2 Info : 30M x 0.32mm x 0.25µm

Compound	RT#1	RT#2	Resp#1	Resp#2	ng/ml	ng/ml
-----						
System Monitoring Compounds						
1) SA Tetrachlo...	4.499	3.612	14488706	7637532	4.677	4.833
2) SA Decachlor...	10.349	8.630	8004400	4896450	4.497	5.139
Target Compounds						
21) L5 AR-1248-1	5.679	4.699	2991758	1831499	50.861	53.273
22) L5 AR-1248-2	5.957	4.937	4028209	2492987	48.666	53.659
23) L5 AR-1248-3	6.162	4.978	4244421	2743270	47.337	55.242
24) L5 AR-1248-4	6.569	5.150	4627398	3113377	47.474	54.742
25) L5 AR-1248-5	6.608	5.544	5356523	3146513	53.299	56.583
-----						

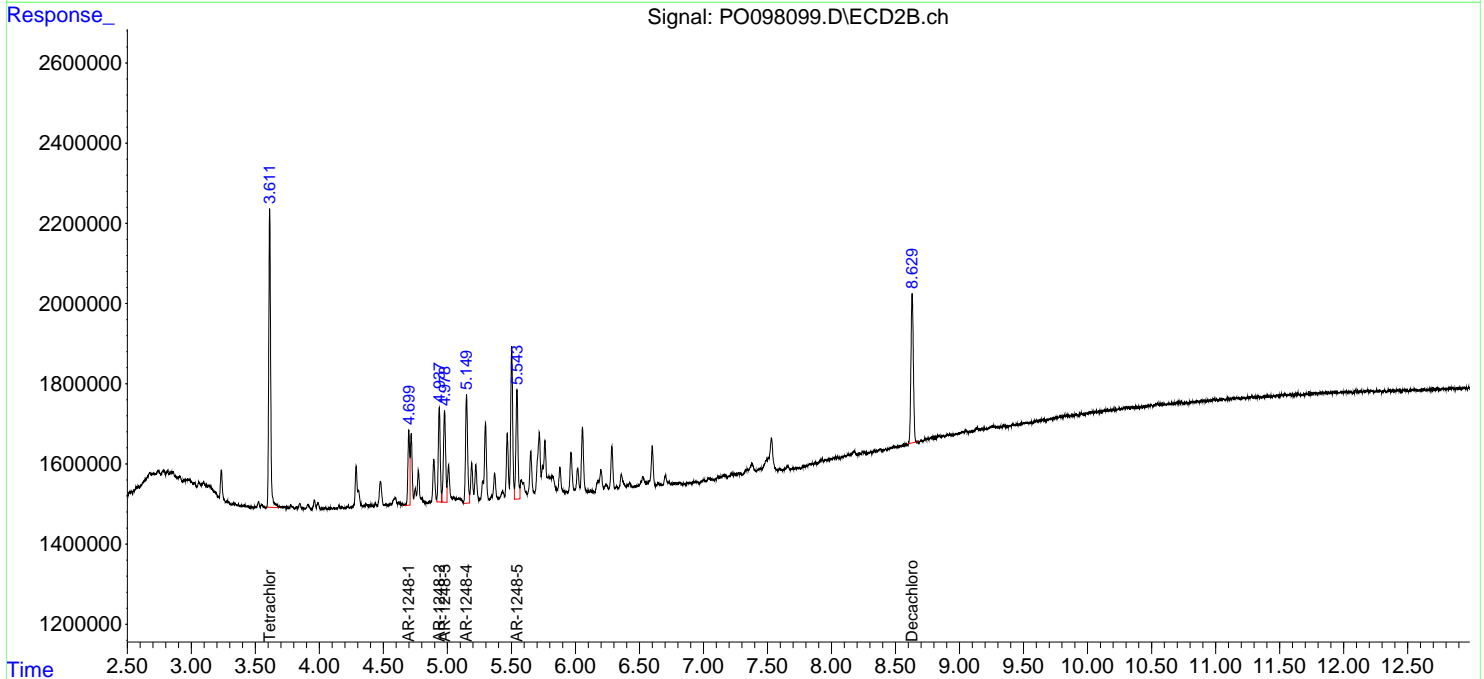
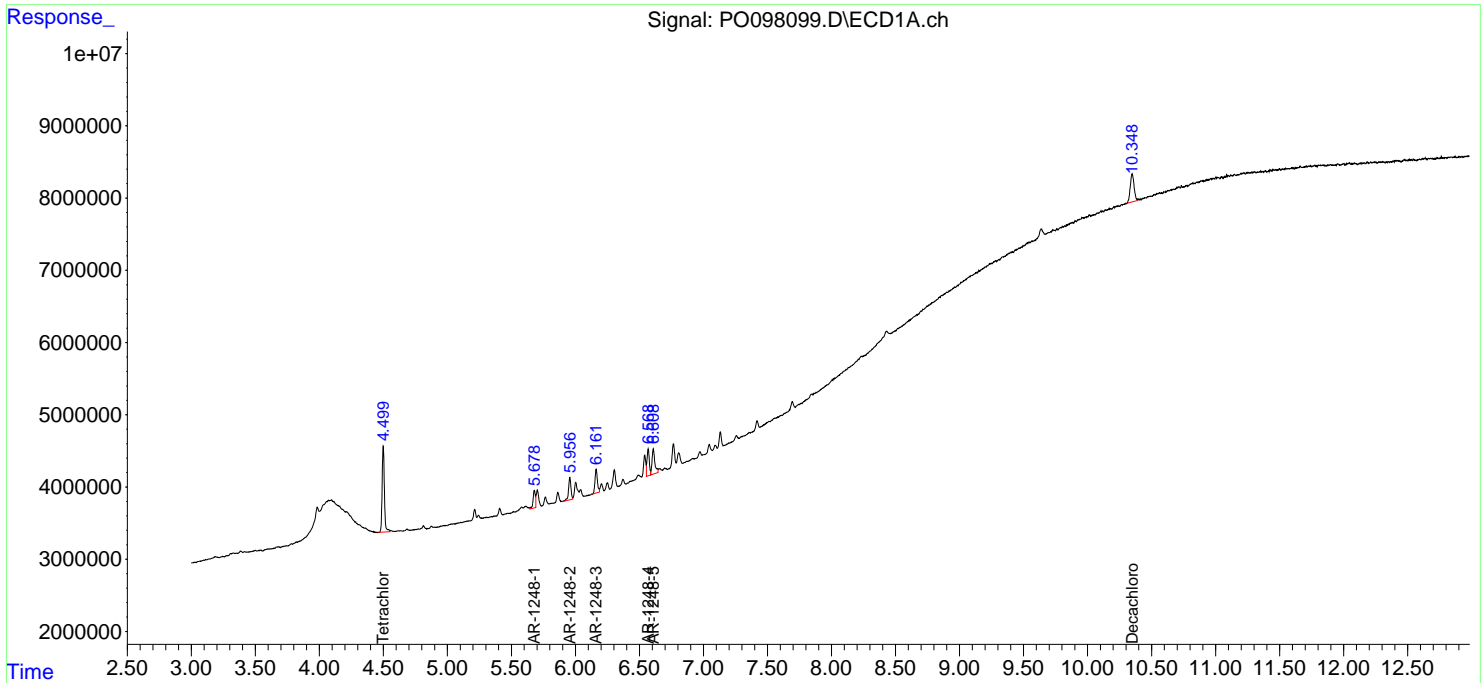
(f)=RT Delta > 1/2 Window (#)=Amounts differ by > 25% (m)=manual int.

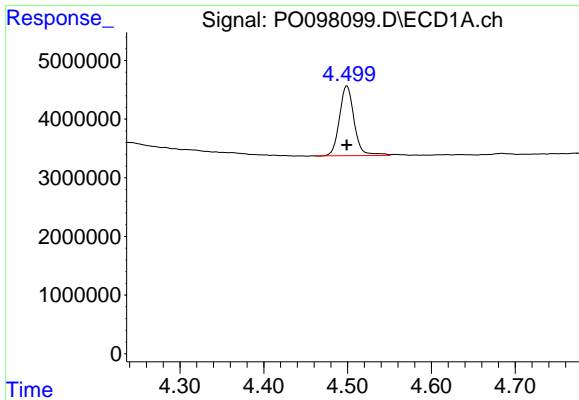
Data Path : Z:\pestpcbsrv\HPCHEM1\ECD\_O\Data\PO091823\  
 Data File : PO098099.D  
 Signal(s) : Signal #1: ECD1A.ch Signal #2: ECD2B.ch  
 Acq On : 18 Sep 2023 20:31  
 Operator : YP/AJ  
 Sample : AR1248ICC050  
 Misc :  
 ALS Vial : 19 Sample Multiplier: 1

Instrument :  
 ECD\_O  
 ClientSampleId :  
 AR1248ICC050

Integration File signal 1: autoint1.e  
 Integration File signal 2: autoint2.e  
 Quant Time: Sep 18 20:53:34 2023  
 Quant Method : Z:\pestpcbsrv\HPCHEM1\ECD\_O\methods\PO091823.M  
 Quant Title : GC EXTRACTABLES  
 QLast Update : Mon Sep 18 20:53:24 2023  
 Response via : Initial Calibration  
 Integrator: ChemStation

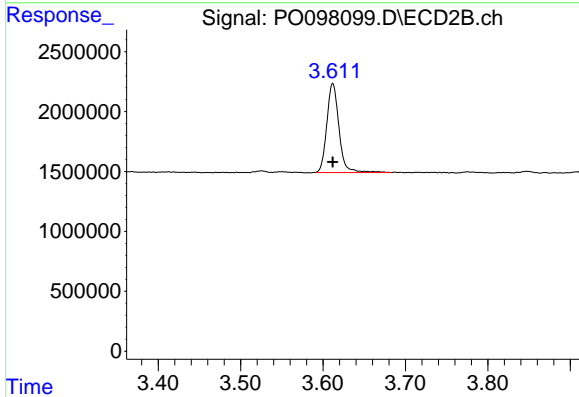
Volume Inj. : 2 µl  
 Signal #1 Phase : ZB-MR1 Signal #2 Phase: ZB-MR2  
 Signal #1 Info : 30Mx0.32mmx 0.50µ Signal #2 Info : 30M x 0.32mm x 0.25µm



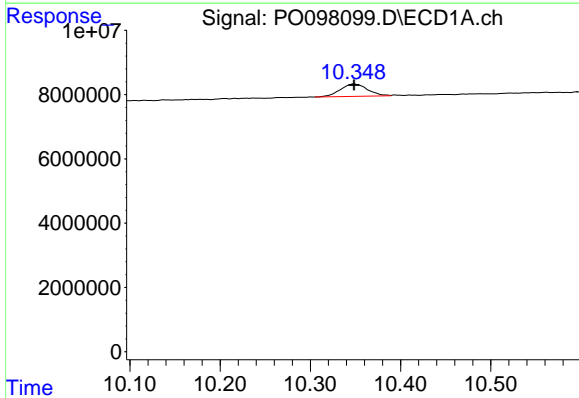


#1 Tetrachloro-m-xylene  
 R.T.: 4.499 min  
 Delta R.T.: 0.000 min  
 Response: 14488706  
 Conc: 4.68 ng/ml

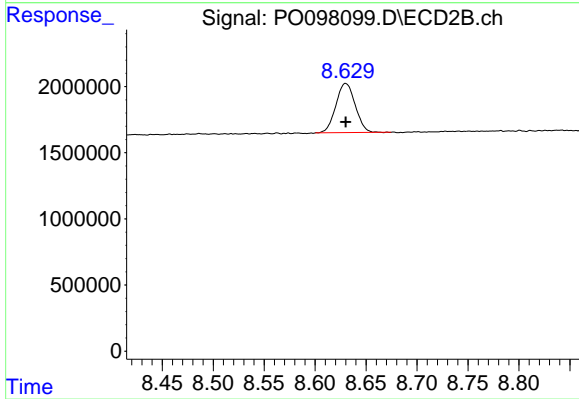
Instrument :  
 ECD\_O  
 ClientSampleId :  
 AR1248ICCO50



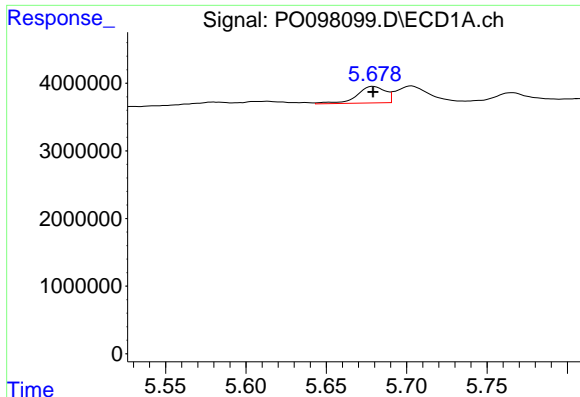
#1 Tetrachloro-m-xylene  
 R.T.: 3.612 min  
 Delta R.T.: 0.000 min  
 Response: 7637532  
 Conc: 4.83 ng/ml



#2 Decachlorobiphenyl  
 R.T.: 10.349 min  
 Delta R.T.: 0.000 min  
 Response: 8004400  
 Conc: 4.50 ng/ml



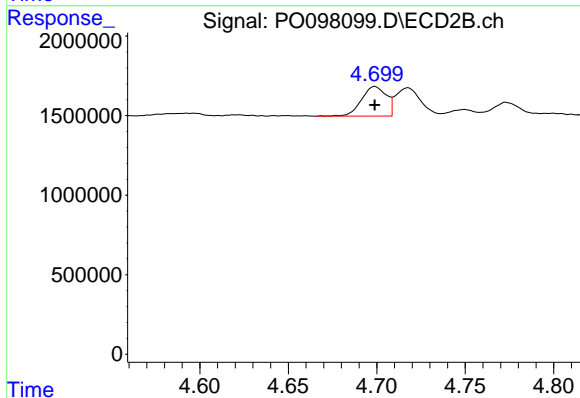
#2 Decachlorobiphenyl  
 R.T.: 8.630 min  
 Delta R.T.: 0.000 min  
 Response: 4896450  
 Conc: 5.14 ng/ml



#21 AR-1248-1

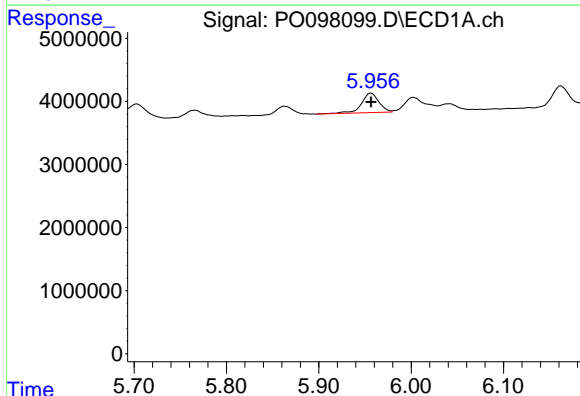
R.T.: 5.679 min  
 Delta R.T.: 0.000 min  
 Response: 2991758  
 Conc: 50.86 ng/ml

Instrument :  
 ECD\_O  
 ClientSampleId :  
 AR1248ICC050



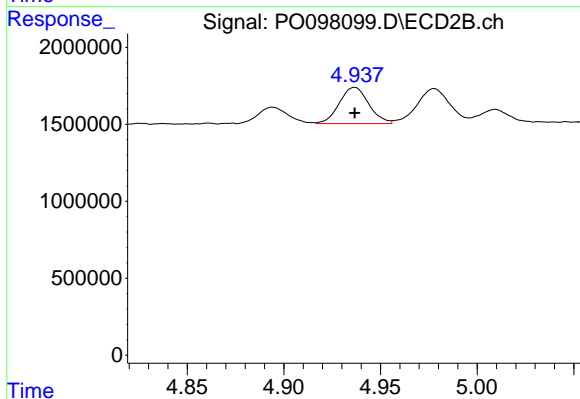
#21 AR-1248-1

R.T.: 4.699 min  
 Delta R.T.: 0.000 min  
 Response: 1831499  
 Conc: 53.27 ng/ml



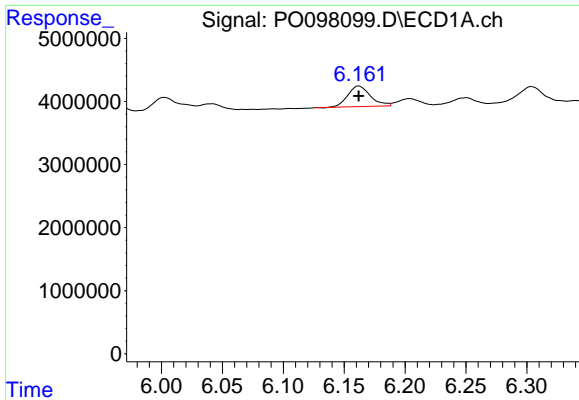
#22 AR-1248-2

R.T.: 5.957 min  
 Delta R.T.: 0.000 min  
 Response: 4028209  
 Conc: 48.67 ng/ml



#22 AR-1248-2

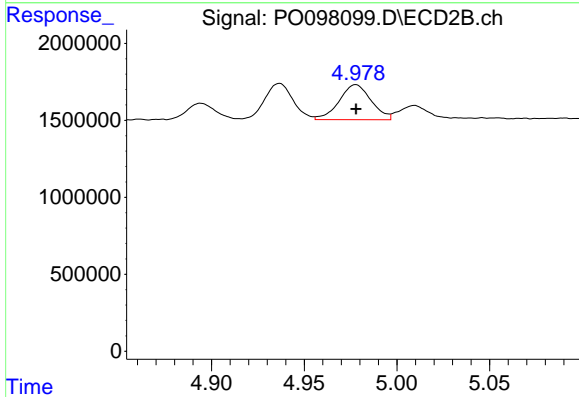
R.T.: 4.937 min  
 Delta R.T.: 0.000 min  
 Response: 2492987  
 Conc: 53.66 ng/ml



#23 AR-1248-3

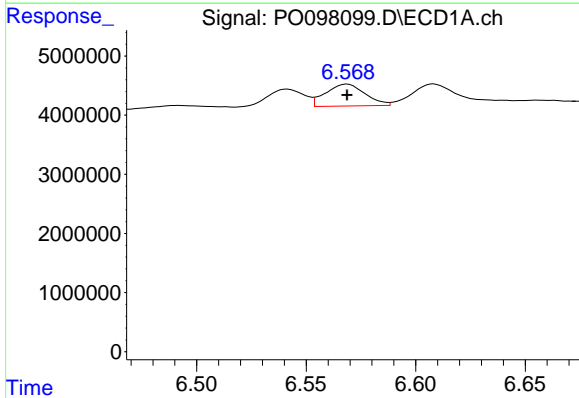
R.T.: 6.162 min  
 Delta R.T.: 0.000 min  
 Response: 4244421  
 Conc: 47.34 ng/ml

Instrument :  
 ECD\_O  
 ClientSampleId :  
 AR1248ICC050



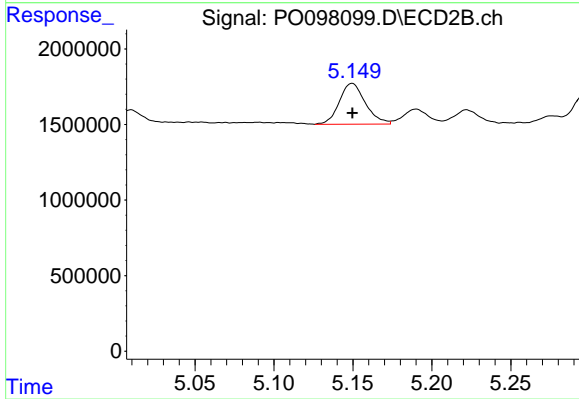
#23 AR-1248-3

R.T.: 4.978 min  
 Delta R.T.: 0.000 min  
 Response: 2743270  
 Conc: 55.24 ng/ml



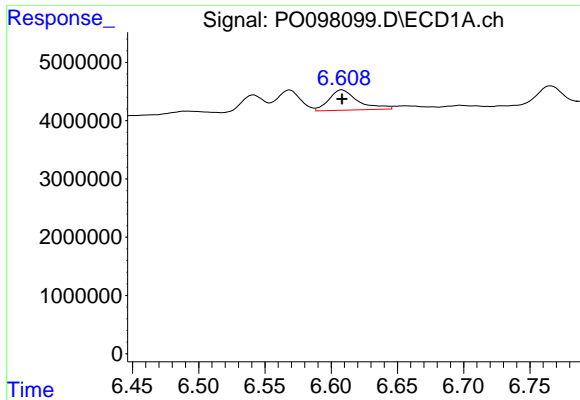
#24 AR-1248-4

R.T.: 6.569 min  
 Delta R.T.: 0.000 min  
 Response: 4627398  
 Conc: 47.47 ng/ml



#24 AR-1248-4

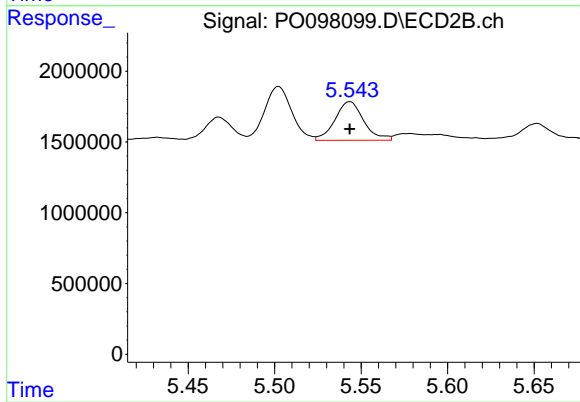
R.T.: 5.150 min  
 Delta R.T.: 0.000 min  
 Response: 3113377  
 Conc: 54.74 ng/ml



#25 AR-1248-5

R.T.: 6.608 min  
Delta R.T.: 0.000 min  
Response: 5356523  
Conc: 53.30 ng/ml

Instrument :  
ECD\_O  
ClientSampleId :  
AR1248ICC050



#25 AR-1248-5

R.T.: 5.544 min  
Delta R.T.: 0.000 min  
Response: 3146513  
Conc: 56.58 ng/ml