

Data Path : Z:\pestpcbsrv\HPCHEM1\ECD_0\Data\P0091823\
 Data File : P0098107.D
 Signal(s) : Signal #1: ECD1A.ch Signal #2: ECD2B.ch
 Acq On : 18 Sep 2023 22:46
 Operator : YP/AJ
 Sample : AR1268ICC750
 Misc :
 ALS Vial : 27 Sample Multiplier: 1

Instrument :
 ECD_0
 ClientSampleId :
 AR1268ICC750

Integration File signal 1: autoint1.e
 Integration File signal 2: autoint2.e
 Quant Time: Sep 19 01:59:52 2023
 Quant Method : Z:\pestpcbsrv\HPCHEM1\ECD_0\methods\P0091823.M
 Quant Title : GC EXTRACTABLES
 QLast Update : Tue Sep 19 01:59:45 2023
 Response via : Initial Calibration
 Integrator: ChemStation

Volume Inj. : 2 µl
 Signal #1 Phase : ZB-MR1 Signal #2 Phase: ZB-MR2
 Signal #1 Info : 30Mx0.32mmx 0.50µ Signal #2 Info : 30M x 0.32mm x 0.25µm

Compound	RT#1	RT#2	Resp#1	Resp#2	ng/ml	ng/ml

System Monitoring Compounds						
1) SA Tetrachlo...	4.499	3.612	236.7E6	115.0E6	74.536	74.657
2) SA Decachlor...	10.346	8.632	241.7E6	121.3E6	74.195	74.216
Target Compounds						
41) L9 AR-1268-1	8.790	7.530	210.1E6	120.2E6	745.041	746.634
42) L9 AR-1268-2	8.887	7.595	186.3E6	106.3E6	747.256	742.527
43) L9 AR-1268-3	9.124	7.894	160.9E6	24651002	744.202	743.124
44) L9 AR-1268-4	9.562	8.090	66657327	39329665	739.866	744.502
45) L9 AR-1268-5	9.994	8.379	531.4E6	263.8E6	745.689	743.686

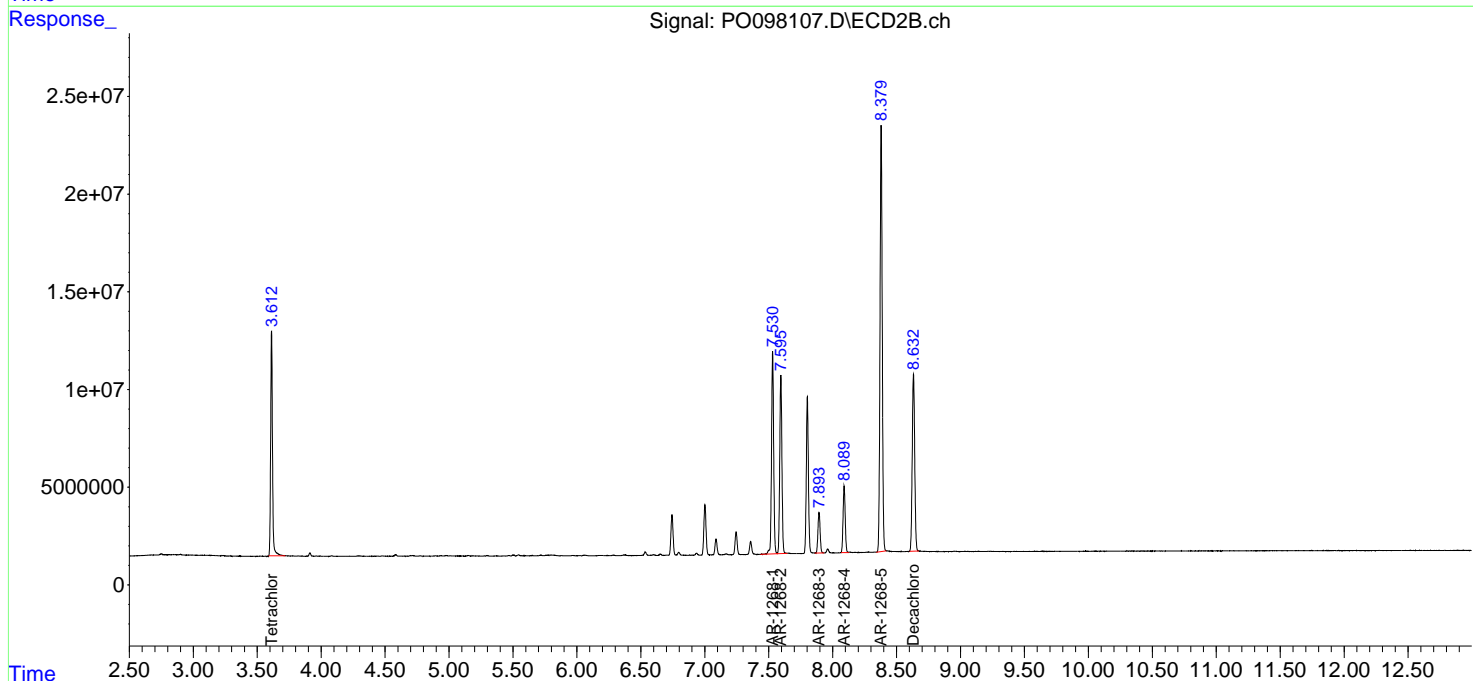
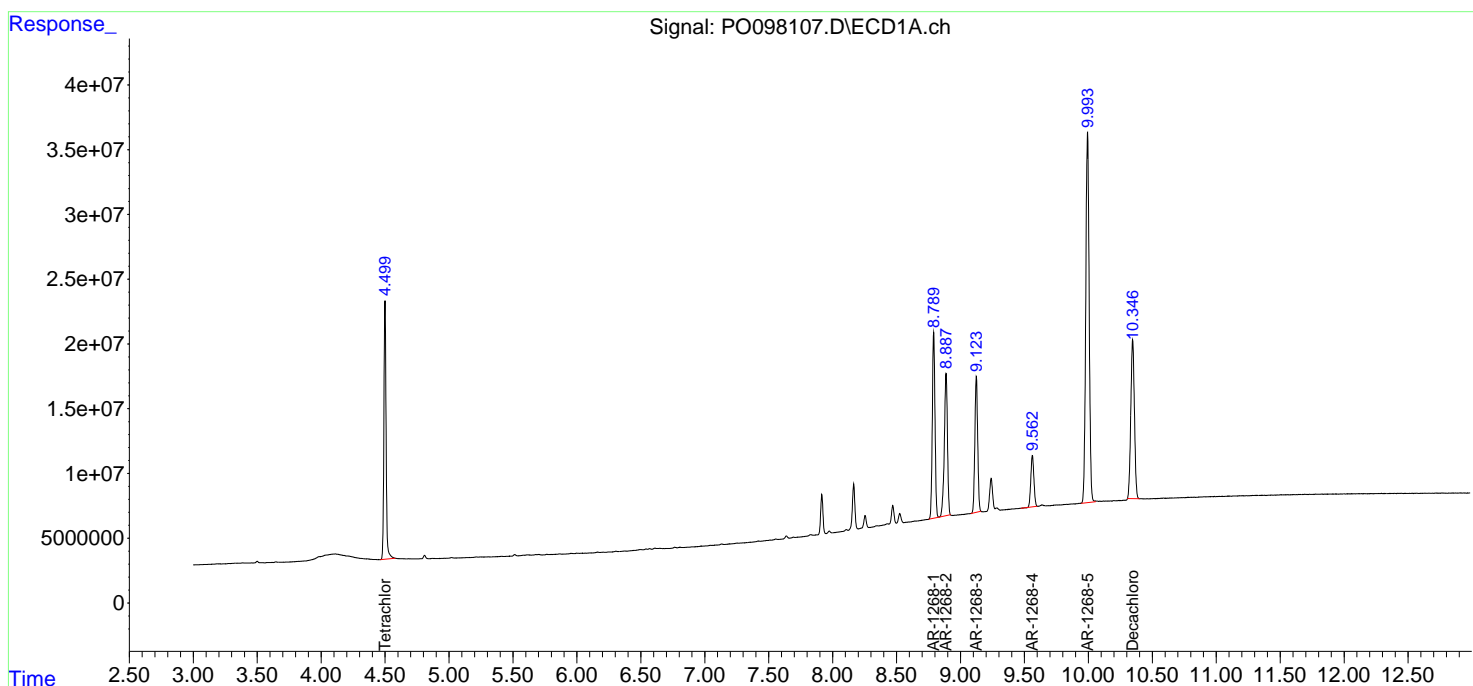
(f)=RT Delta > 1/2 Window (#)=Amounts differ by > 25% (m)=manual int.

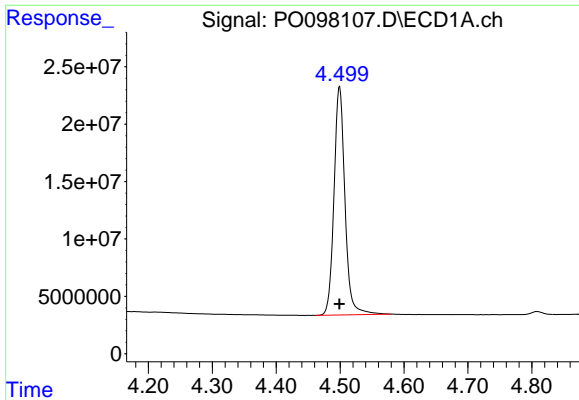
Data Path : Z:\pestpcbsrv\HPCHEM1\ECD_0\Data\PO091823\
 Data File : PO098107.D
 Signal(s) : Signal #1: ECD1A.ch Signal #2: ECD2B.ch
 Acq On : 18 Sep 2023 22:46
 Operator : YP/AJ
 Sample : AR1268ICC750
 Misc :
 ALS Vial : 27 Sample Multiplier: 1

Instrument :
 ECD_0
 ClientSampleId :
 AR1268ICC750

Integration File signal 1: autoint1.e
 Integration File signal 2: autoint2.e
 Quant Time: Sep 19 01:59:52 2023
 Quant Method : Z:\pestpcbsrv\HPCHEM1\ECD_0\methods\PO091823.M
 Quant Title : GC EXTRACTABLES
 QLast Update : Tue Sep 19 01:59:45 2023
 Response via : Initial Calibration
 Integrator: ChemStation

Volume Inj. : 2 µl
 Signal #1 Phase : ZB-MR1 Signal #2 Phase: ZB-MR2
 Signal #1 Info : 30Mx0.32mmx 0.50µm Signal #2 Info : 30M x 0.32mm x 0.25µm

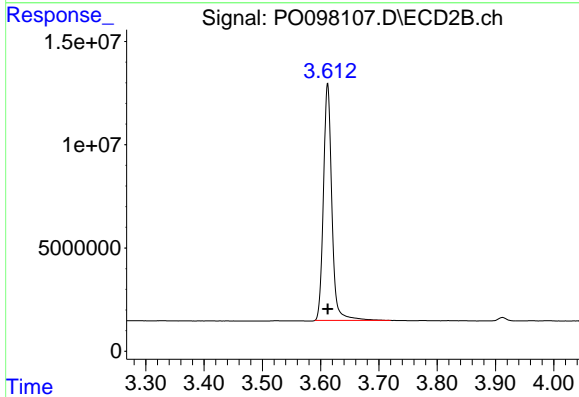




#1 Tetrachloro-m-xylene

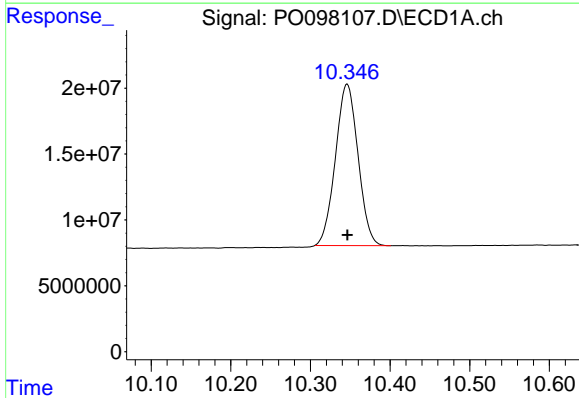
R.T.: 4.499 min
 Delta R.T.: 0.000 min
 Response: 236703772
 Conc: 74.54 ng/ml

Instrument :
 ECD_O
 ClientSampleId :
 AR1268ICC750



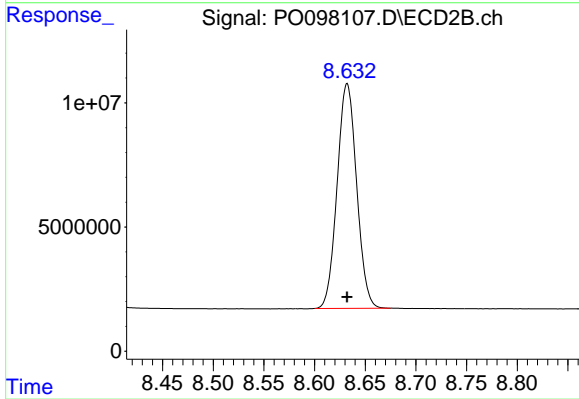
#1 Tetrachloro-m-xylene

R.T.: 3.612 min
 Delta R.T.: 0.000 min
 Response: 114986180
 Conc: 74.66 ng/ml



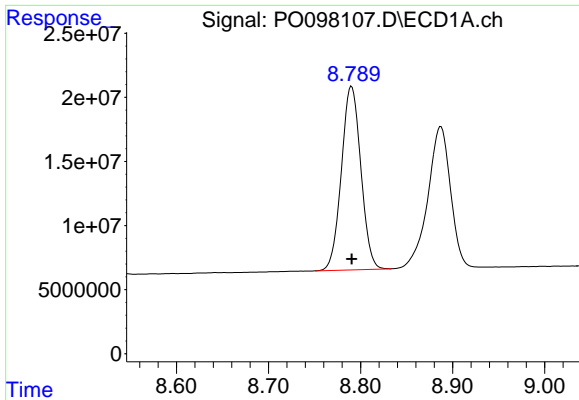
#2 Decachlorobiphenyl

R.T.: 10.346 min
 Delta R.T.: 0.000 min
 Response: 241665585
 Conc: 74.20 ng/ml



#2 Decachlorobiphenyl

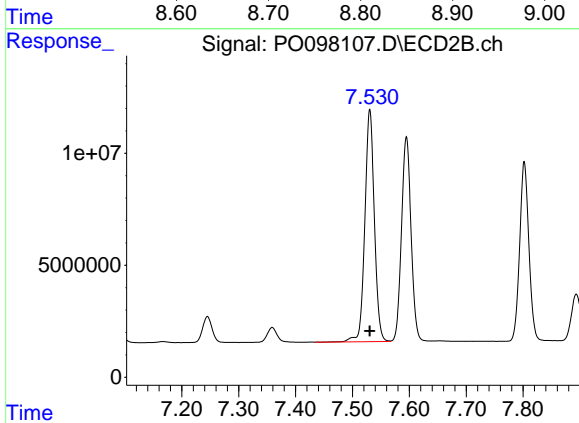
R.T.: 8.632 min
 Delta R.T.: 0.000 min
 Response: 121257402
 Conc: 74.22 ng/ml



#41 AR-1268-1

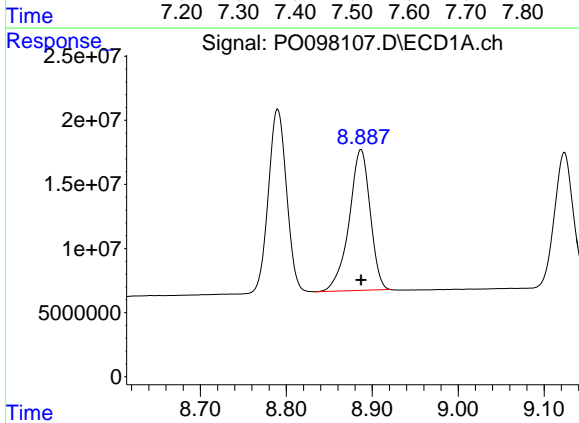
R.T.: 8.790 min
 Delta R.T.: 0.000 min
 Response: 210054394
 Conc: 745.04 ng/ml

Instrument :
 ECD_O
 ClientSampleId :
 AR1268ICC750



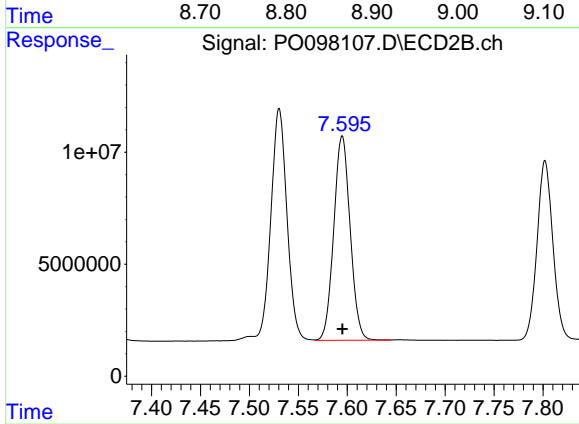
#41 AR-1268-1

R.T.: 7.530 min
 Delta R.T.: 0.000 min
 Response: 120224387
 Conc: 746.63 ng/ml



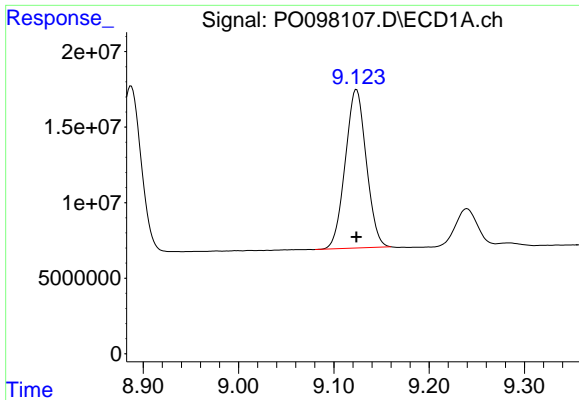
#42 AR-1268-2

R.T.: 8.887 min
 Delta R.T.: 0.000 min
 Response: 186332084
 Conc: 747.26 ng/ml



#42 AR-1268-2

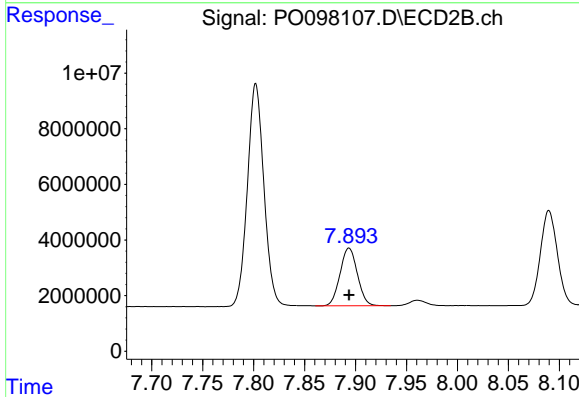
R.T.: 7.595 min
 Delta R.T.: 0.000 min
 Response: 106309309
 Conc: 742.53 ng/ml



#43 AR-1268-3

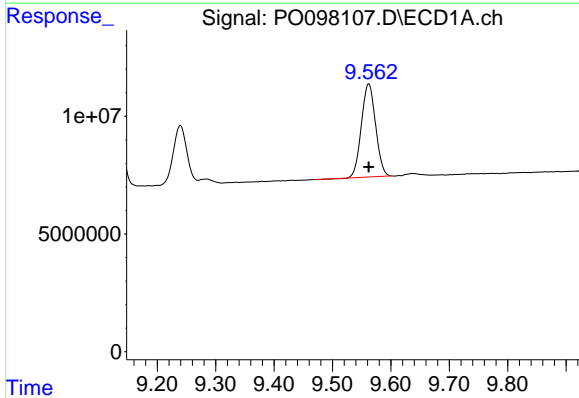
R.T.: 9.124 min
 Delta R.T.: 0.000 min
 Response: 160940005
 Conc: 744.20 ng/ml

Instrument :
 ECD_O
 ClientSampleId :
 AR1268ICC750



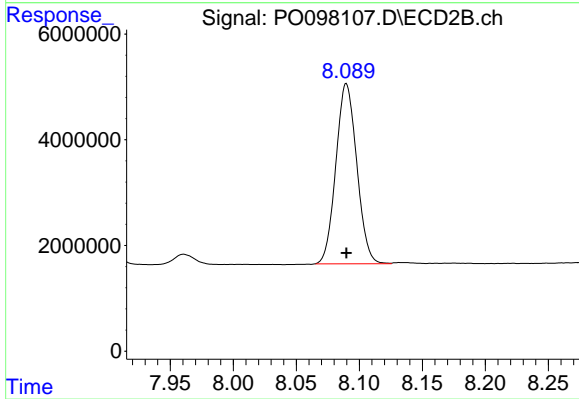
#43 AR-1268-3

R.T.: 7.894 min
 Delta R.T.: 0.000 min
 Response: 24651002
 Conc: 743.12 ng/ml



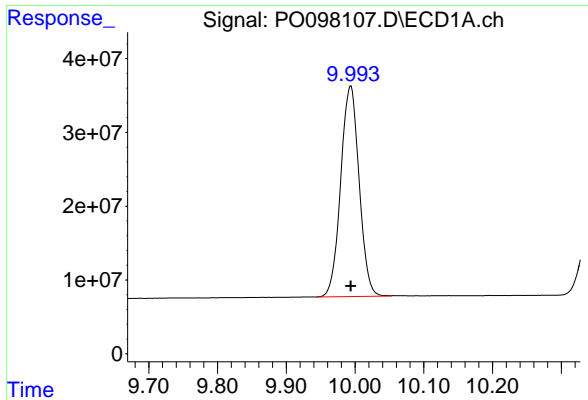
#44 AR-1268-4

R.T.: 9.562 min
 Delta R.T.: 0.000 min
 Response: 66657327
 Conc: 739.87 ng/ml



#44 AR-1268-4

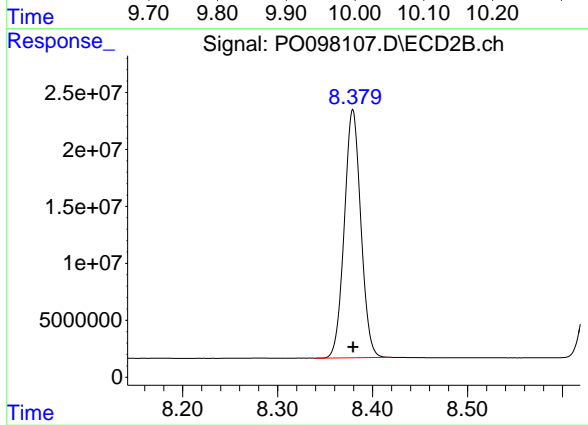
R.T.: 8.090 min
 Delta R.T.: 0.000 min
 Response: 39329665
 Conc: 744.50 ng/ml



#45 AR-1268-5

R.T.: 9.994 min
Delta R.T.: 0.000 min
Response: 531359058
Conc: 745.69 ng/ml

Instrument :
ECD_O
ClientSampleId :
AR1268ICC750



#45 AR-1268-5

R.T.: 8.379 min
Delta R.T.: 0.000 min
Response: 263824189
Conc: 743.69 ng/ml