

Data Path : Z:\pestpcbsrv\HPCHEM1\ECD_O\Data\P0091824\
 Data File : P0106658.D
 Signal(s) : Signal #1: ECD1A.ch Signal #2: ECD2B.ch
 Acq On : 18 Sep 2024 23:34
 Operator : YP/AJ
 Sample : AR1248CCC500
 Misc :
 ALS Vial : 5 Sample Multiplier: 1

Instrument :
 ECD_O
 ClientSampleId :
 AR1248CCC500

Integration File signal 1: autoint1.e
 Integration File signal 2: autoint2.e
 Quant Time: Sep 19 07:50:30 2024
 Quant Method : Z:\pestpcbsrv\HPCHEM1\ECD_O\methods\P0090924.M
 Quant Title : GC EXTRACTABLES
 QLast Update : Tue Sep 10 09:57:51 2024
 Response via : Initial Calibration
 Integrator: ChemStation

Volume Inj. : 2 µl
 Signal #1 Phase : ZB-MR1 Signal #2 Phase: ZB-MR2
 Signal #1 Info : 30Mx0.32mmx 0.50µ Signal #2 Info : 30M x 0.32mm x 0.25µm

Compound	RT#1	RT#2	Resp#1	Resp#2	ng/ml	ng/ml

System Monitoring Compounds						
1) SA Tetrachlo...	4.451	3.714	412.7E6	139.6E6	55.017	52.266
2) SA Decachlor...	10.194	8.738	243.1E6	105.2E6	49.186	52.576
Target Compounds						
21) L5 AR-1248-1	5.615	4.800	79538548	28226492	503.649	487.901
22) L5 AR-1248-2	5.888	5.038	113.1E6	37413593	521.593	478.657
23) L5 AR-1248-3	6.092	5.079	124.7E6	39638354	522.421	482.289
24) L5 AR-1248-4	6.494	5.252	136.1E6	50027277	518.410	509.524
25) L5 AR-1248-5	6.533	5.645	132.5E6	48073830	528.289	496.354

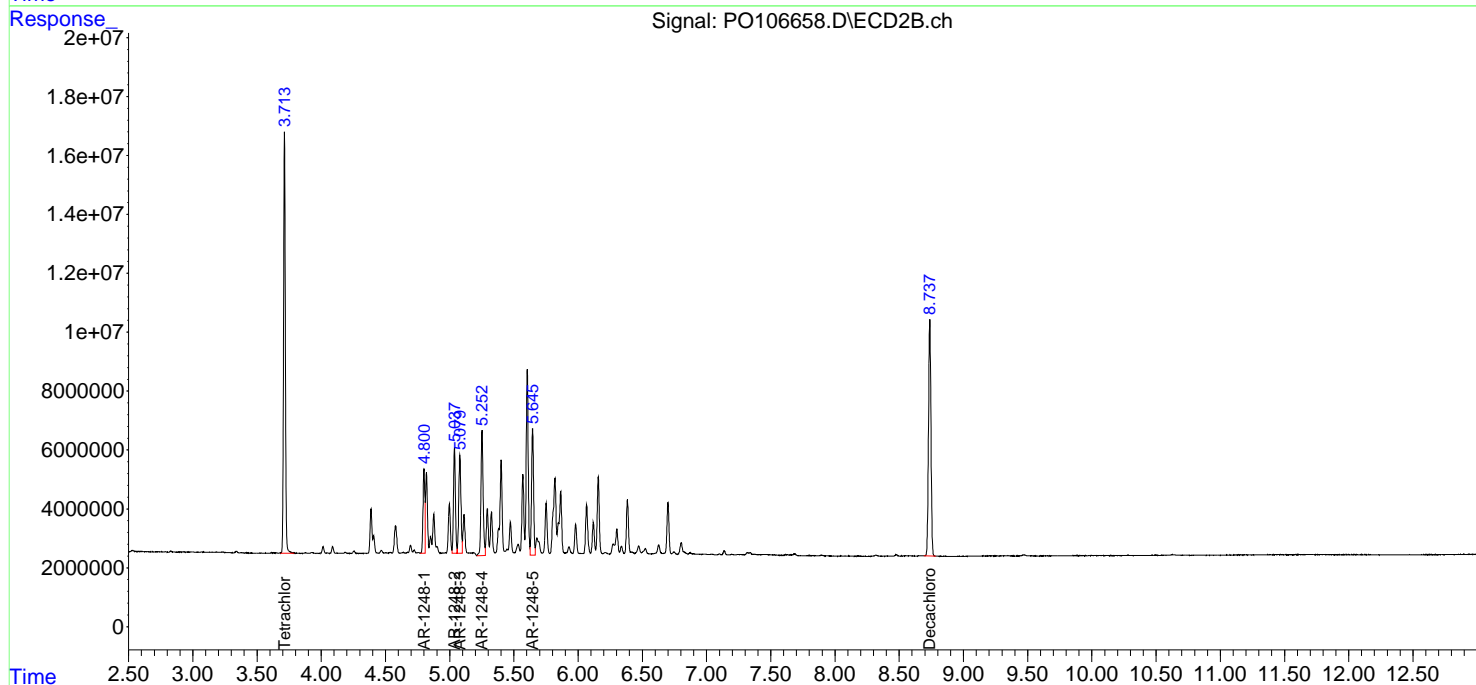
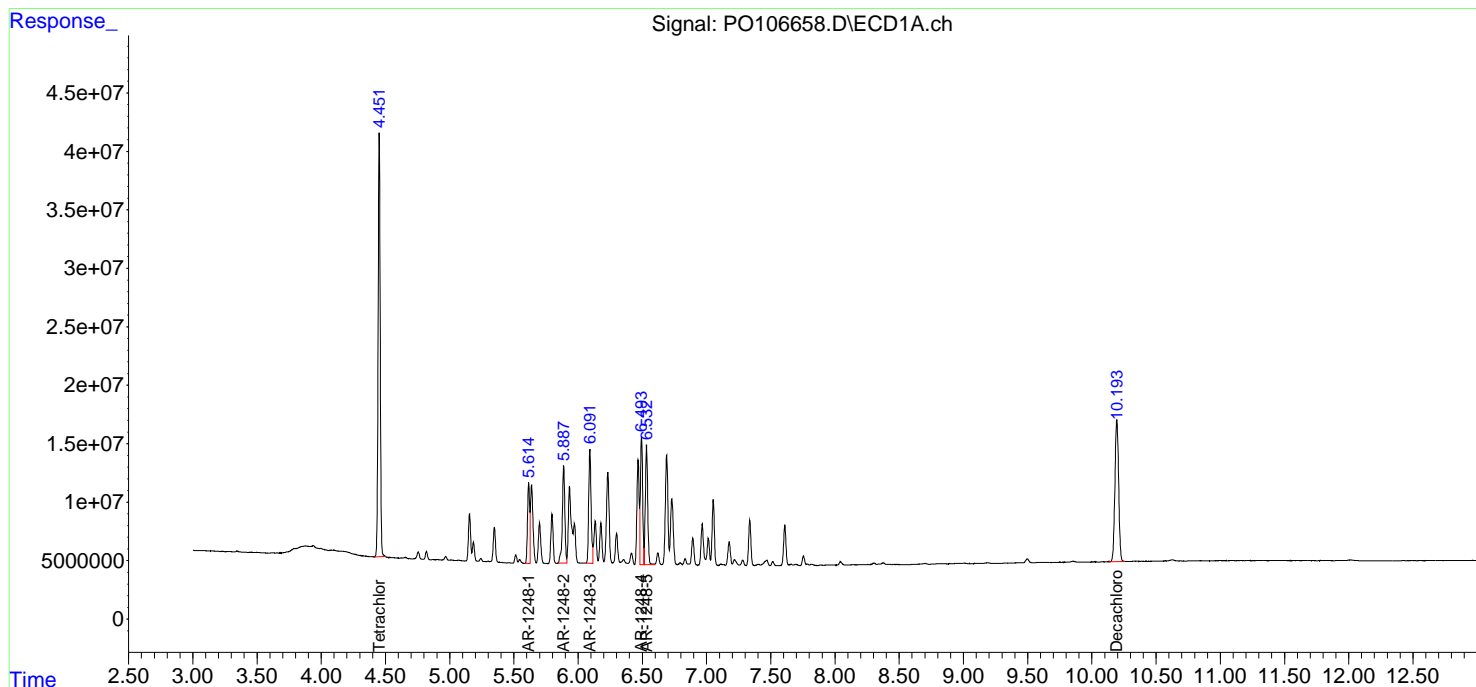
(f)=RT Delta > 1/2 Window (#)=Amounts differ by > 25% (m)=manual int.

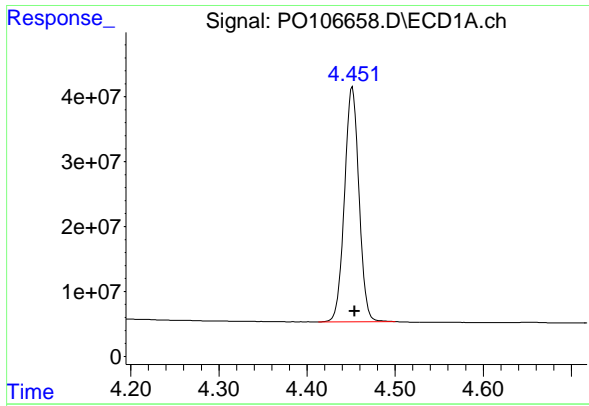
Data Path : Z:\pestpcbsrv\HPCHEM1\ECD_O\Data\PO091824\
Data File : PO106658.D
Signal(s) : Signal #1: ECD1A.ch Signal #2: ECD2B.ch
Acq On : 18 Sep 2024 23:34
Operator : YP/AJ
Sample : AR1248CCC500
Misc :
ALS Vial : 5 Sample Multiplier: 1

Instrument :
ECD_O
ClientSampleId :
AR1248CCC500

Integration File signal 1: autoint1.e
Integration File signal 2: autoint2.e
Quant Time: Sep 19 07:50:30 2024
Quant Method : Z:\pestpcbsrv\HPCHEM1\ECD_O\methods\PO090924.M
Quant Title : GC EXTRACTABLES
QLast Update : Tue Sep 10 09:57:51 2024
Response via : Initial Calibration
Integrator: ChemStation

Volume Inj. : 2 µl
Signal #1 Phase : ZB-MR1 Signal #2 Phase: ZB-MR2
Signal #1 Info : 30Mx0.32mmx 0.50µm Signal #2 Info : 30M x 0.32mm x 0.25µm

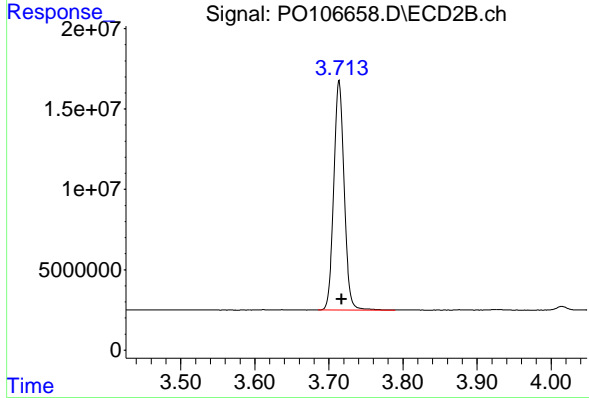




#1 Tetrachloro-m-xylene

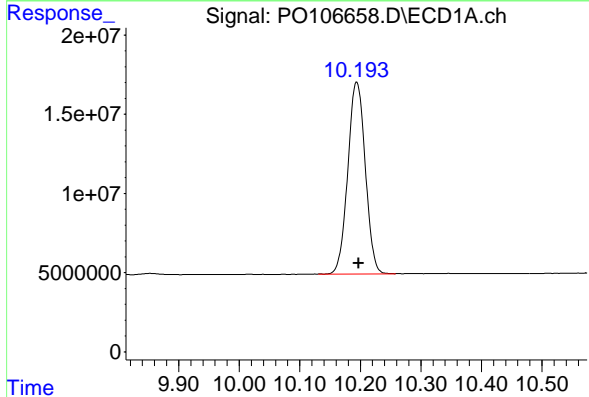
R.T.: 4.451 min
 Delta R.T.: -0.003 min
 Response: 412704111
 Conc: 55.02 ng/ml

Instrument :
 ECD_O
 ClientSampleId :
 AR1248CCC500



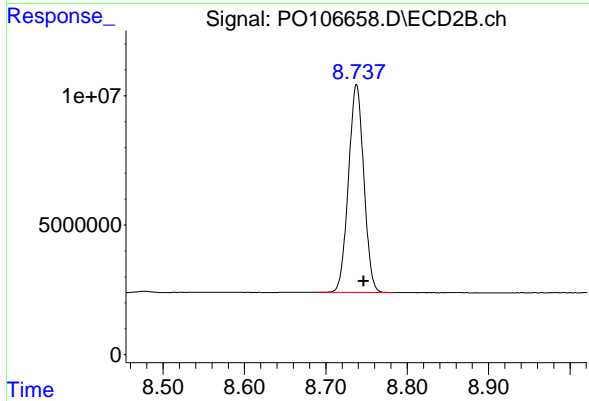
#1 Tetrachloro-m-xylene

R.T.: 3.714 min
 Delta R.T.: -0.004 min
 Response: 139614540
 Conc: 52.27 ng/ml



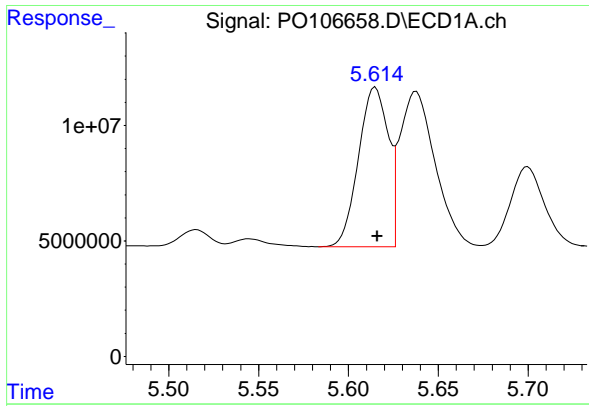
#2 Decachlorobiphenyl

R.T.: 10.194 min
 Delta R.T.: -0.003 min
 Response: 243117487
 Conc: 49.19 ng/ml



#2 Decachlorobiphenyl

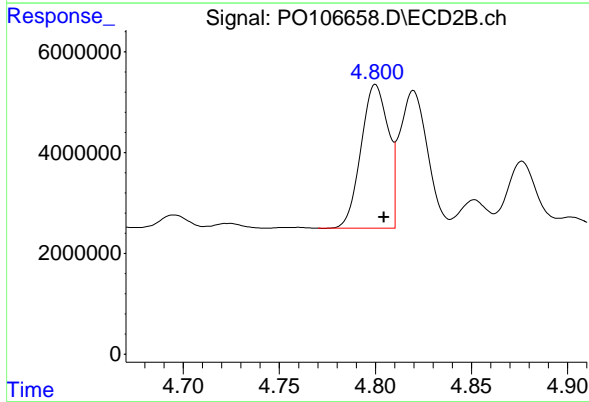
R.T.: 8.738 min
 Delta R.T.: -0.009 min
 Response: 105163812
 Conc: 52.58 ng/ml



#21 AR-1248-1

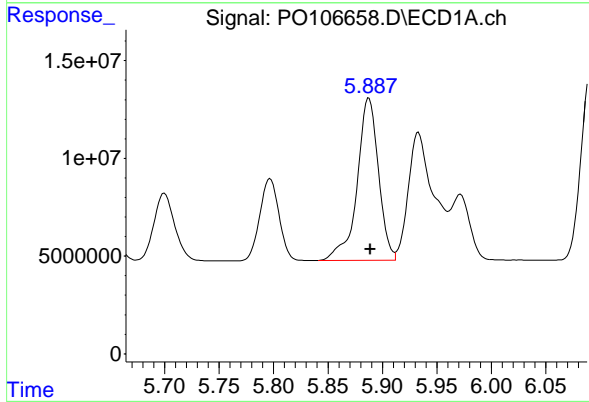
R.T.: 5.615 min
 Delta R.T.: -0.001 min
 Response: 79538548
 Conc: 503.65 ng/ml

Instrument :
 ECD_O
 ClientSampleId :
 AR1248CCC500



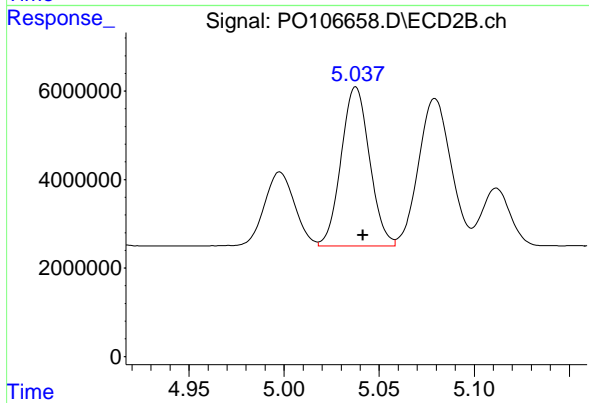
#21 AR-1248-1

R.T.: 4.800 min
 Delta R.T.: -0.004 min
 Response: 28226492
 Conc: 487.90 ng/ml



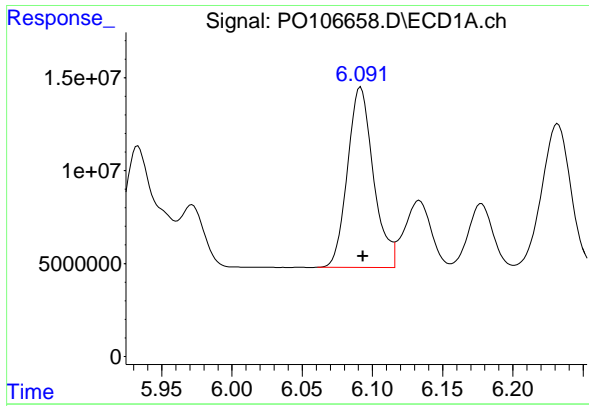
#22 AR-1248-2

R.T.: 5.888 min
 Delta R.T.: -0.001 min
 Response: 113148290
 Conc: 521.59 ng/ml



#22 AR-1248-2

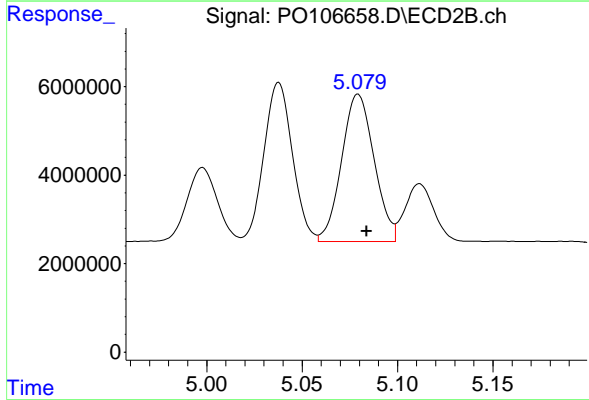
R.T.: 5.038 min
 Delta R.T.: -0.004 min
 Response: 37413593
 Conc: 478.66 ng/ml



#23 AR-1248-3

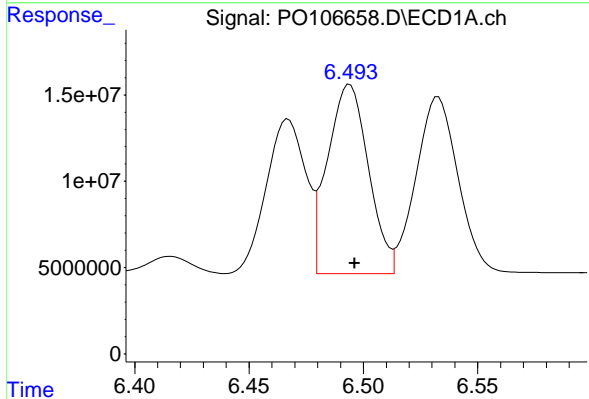
R.T.: 6.092 min
 Delta R.T.: -0.002 min
 Response: 124749596
 Conc: 522.42 ng/ml

Instrument :
 ECD_O
 ClientSampleId :
 AR1248CCC500



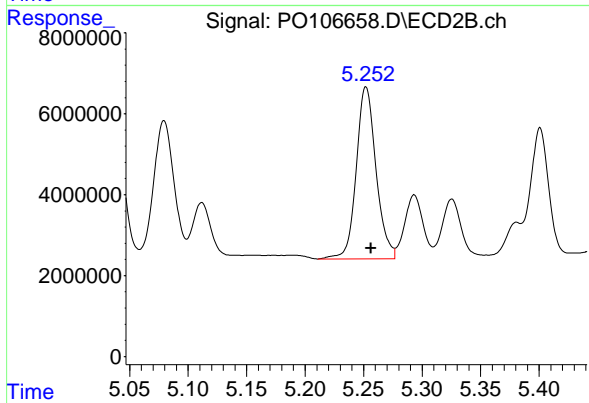
#23 AR-1248-3

R.T.: 5.079 min
 Delta R.T.: -0.004 min
 Response: 39638354
 Conc: 482.29 ng/ml



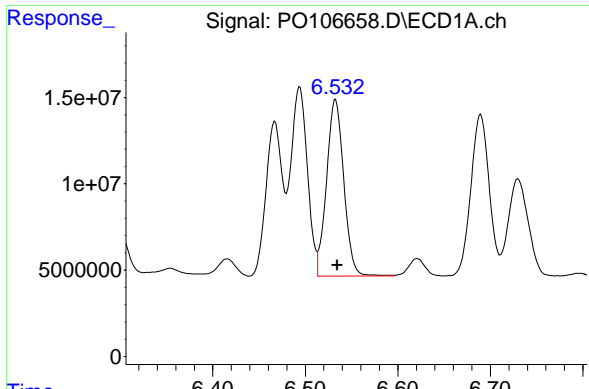
#24 AR-1248-4

R.T.: 6.494 min
 Delta R.T.: -0.002 min
 Response: 136129816
 Conc: 518.41 ng/ml



#24 AR-1248-4

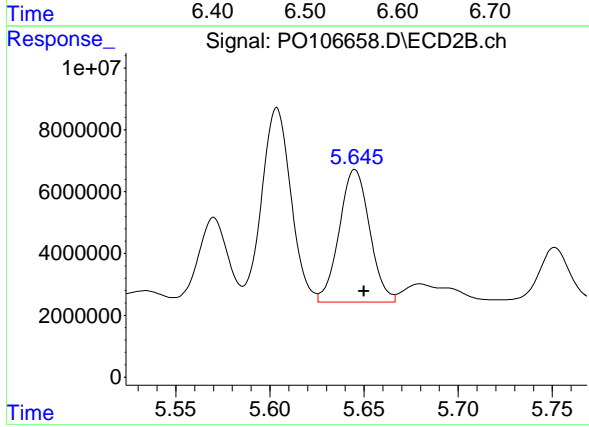
R.T.: 5.252 min
 Delta R.T.: -0.004 min
 Response: 50027277
 Conc: 509.52 ng/ml



#25 AR-1248-5

R.T.: 6.533 min
 Delta R.T.: -0.002 min
 Response: 132482155
 Conc: 528.29 ng/ml

Instrument :
 ECD_O
 ClientSampleId :
 AR1248CCC500



#25 AR-1248-5

R.T.: 5.645 min
 Delta R.T.: -0.005 min
 Response: 48073830
 Conc: 496.35 ng/ml