

Data Path : Z:\pestpcbsrv\HPCHEM1\ECD_0\Data\P0091919\
 Data File : P0061189.D
 Signal(s) : Signal #1: ECD1A.CH Signal #2: ECD2B.CH
 Acq On : 20 Sep 2019 5:20
 Operator : SM/AJ
 Sample : I.BLK
 Misc :
 ALS Vial : 2 Sample Multiplier: 1

Instrument :
 ECD_0
 ClientSampleId :
 I.BLK

Integration File signal 1: autoint1.e
 Integration File signal 2: autoint2.e
 Quant Time: Sep 20 06:12:53 2019
 Quant Method : Z:\pestpcbsrv\HPCHEM1\ECD_0\methods\P0091319.M
 Quant Title : GC EXTRACTABLES
 QLast Update : Sat Sep 14 00:06:36 2019
 Response via : Initial Calibration
 Integrator: ChemStation 6890 Scale Mode: Small noise peaks clipped

Volume Inj. : 2 µl
 Signal #1 Phase : ZB-MR1 Signal #2 Phase: ZB-MR2
 Signal #1 Info : 30Mx0.32mmx 0.50µ Signal #2 Info : 30M x 0.32mm x 0.25µm

Compound	RT#1	RT#2	Resp#1	Resp#2	ng/ml	ng/ml

System Monitoring Compounds						
1) SA Tetrachlo...	4.365	3.527	946955	761914	25.739	27.287
2) SA Decachlor...	10.023	8.402	1096079	819750	23.856	23.387
Target Compounds						
7) L1 AR-1016-5	0.000	5.035	0	10983	N.D.	10.487 #
9) L2 AR-1221-2	0.000	3.817	0	13098	N.D.	46.605 #
15) L3 AR-1232-5	0.000	5.035	0	10983	N.D.	19.408 #
20) L4 AR-1242-5	0.000	5.384	0	6145	N.D.	6.208 #
24) L5 AR-1248-4	0.000	5.035	0	10983	N.D.	9.146 #
25) L5 AR-1248-5	0.000	5.384	0	6145	N.D.	4.861 #
26) L6 AR-1254-1	0.000	5.384	0	6145	N.D.	2.982 #
29) L6 AR-1254-4	0.000	6.193	0	11589	N.D.	5.566 #
30) L6 AR-1254-5	0.000	6.534	0	5146	N.D.	1.626 #
32) L7 AR-1260-2	0.000	6.193	0	11589	N.D.	4.493 #
35) L7 AR-1260-5	0.000	7.063	0	4936	N.D.	1.021 #
36) L8 AR-1262-1	0.000	6.534	0	5146	N.D.	1.723 #
37) L8 AR-1262-2	0.000	7.063	0	4936	N.D.	0.949 #
43) L9 AR-1268-3	0.000	7.613	0	4589	N.D.	1.035 #
45) L9 AR-1268-5	0.000	8.166	0	9658	N.D.	0.803 #

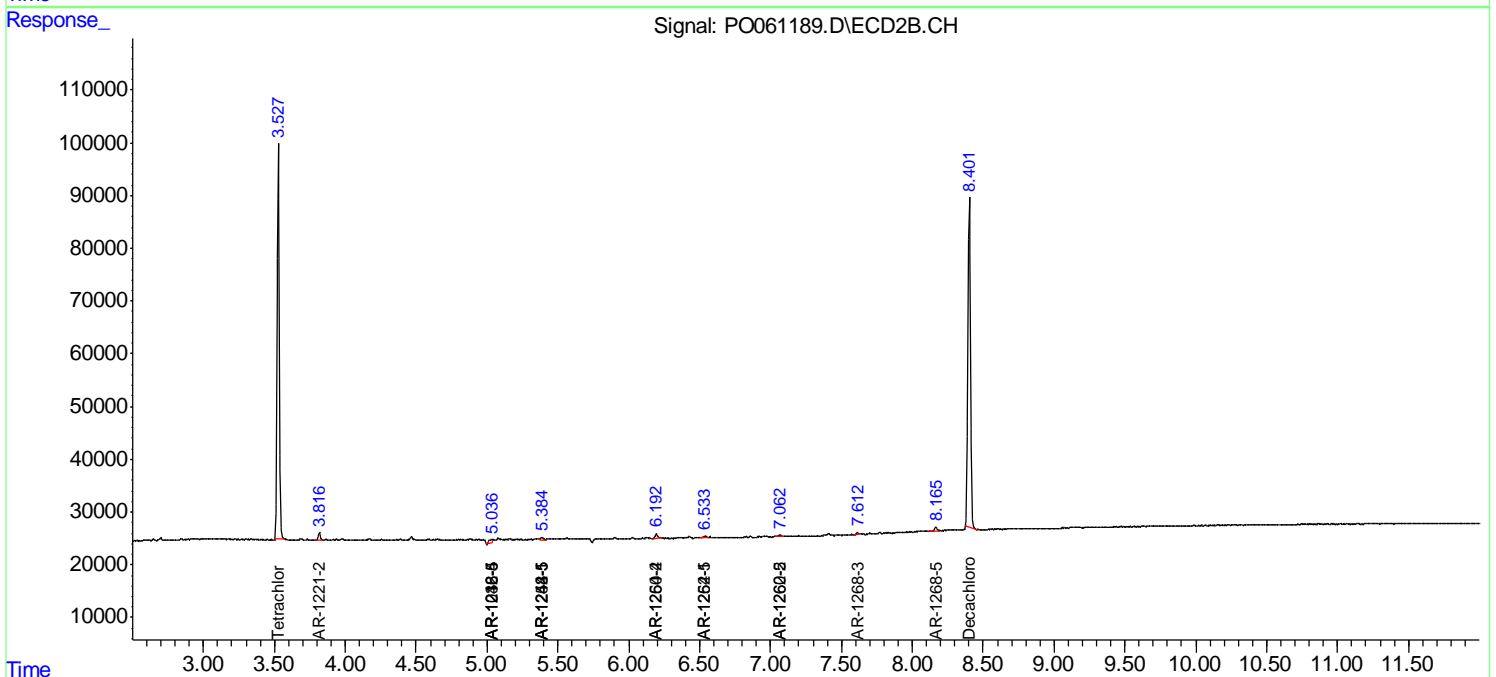
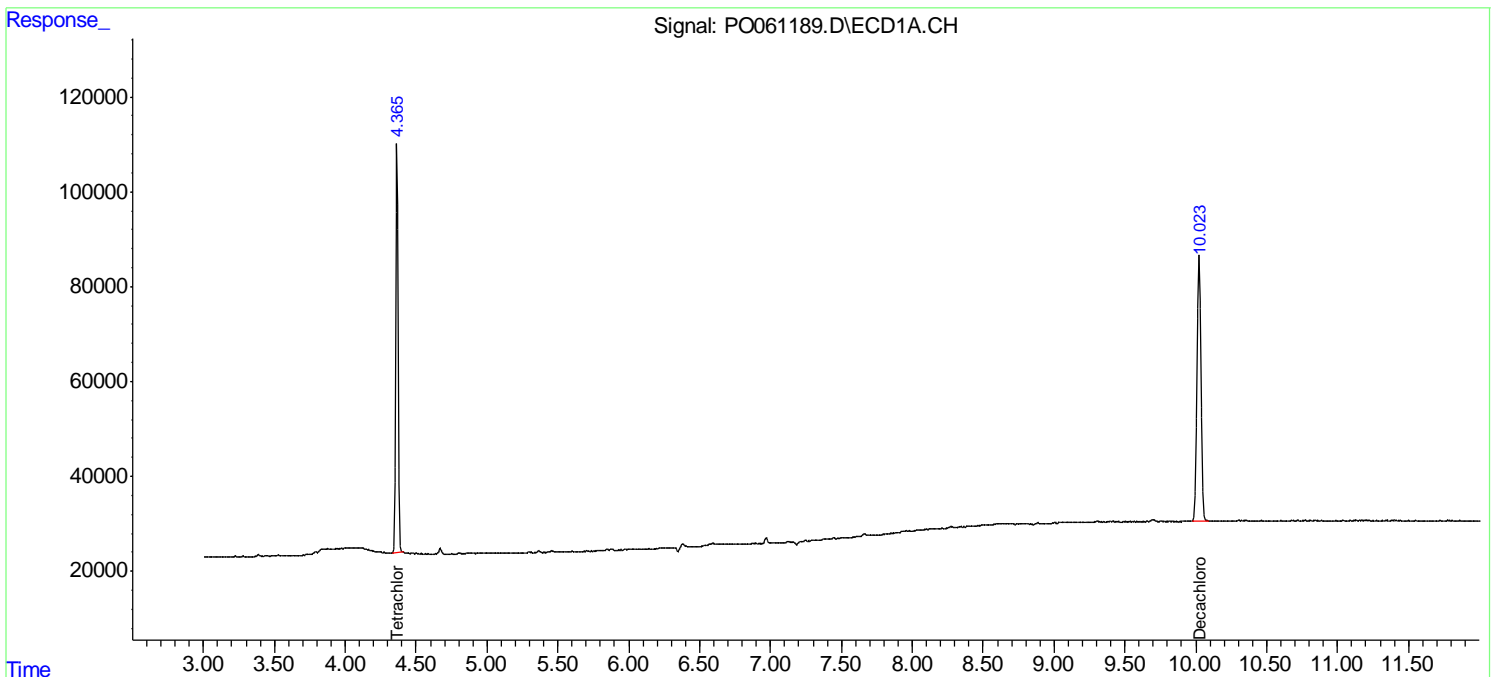
(f)=RT Delta > 1/2 Window (#)=Amounts differ by > 25% (m)=manual int.

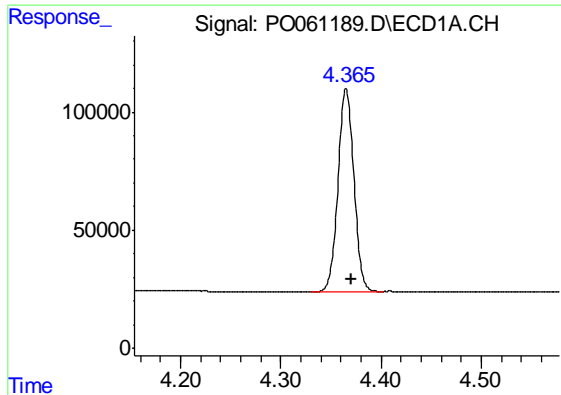
Data Path : Z:\pestpcbsrv\HPCHEM1\ECD_O\Data\P0091919\
 Data File : P0061189.D
 Signal(s) : Signal #1: ECD1A.CH Signal #2: ECD2B.CH
 Acq On : 20 Sep 2019 5:20
 Operator : SM/AJ
 Sample : I.BLK
 Misc :
 ALS Vial : 2 Sample Multiplier: 1

Instrument :
 ECD_O
 ClientSampled :
 I.BLK

Integration File signal 1: autoint1.e
 Integration File signal 2: autoint2.e
 Quant Time: Sep 20 06:12:53 2019
 Quant Method : Z:\pestpcbsrv\HPCHEM1\ECD_O\methods\P0091319.M
 Quant Title : GC EXTRACTABLES
 QLast Update : Sat Sep 14 00:06:36 2019
 Response via : Initial Calibration
 Integrator: ChemStation 6890 Scale Mode: Small noise peaks clipped

Volume Inj. : 2 µl
 Signal #1 Phase : ZB-MR1 Signal #2 Phase: ZB-MR2
 Signal #1 Info : 30Mx0.32mmx 0.50µ Signal #2 Info : 30M x 0.32mm x 0.25µm

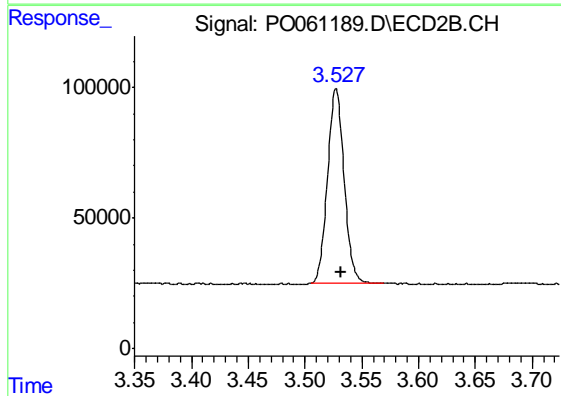




#1 Tetrachloro-m-xylene

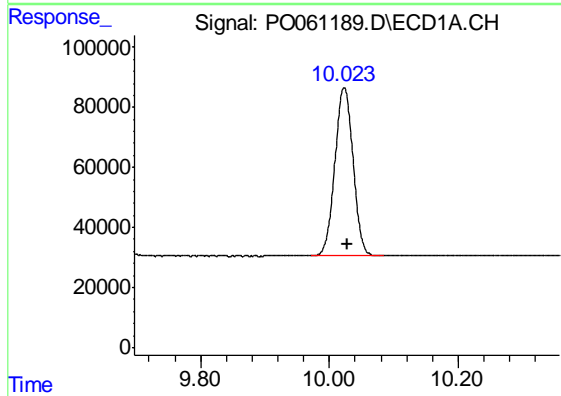
R.T.: 4.365 min
 Delta R.T.: -0.005 min
 Response: 946955
 Conc: 25.74 ng/ml

Instrument :
 ECD_O
 ClientSampled :
 I.BLK



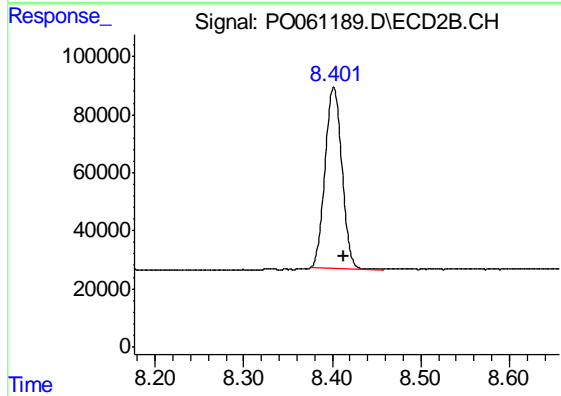
#1 Tetrachloro-m-xylene

R.T.: 3.527 min
 Delta R.T.: -0.004 min
 Response: 761914
 Conc: 27.29 ng/ml



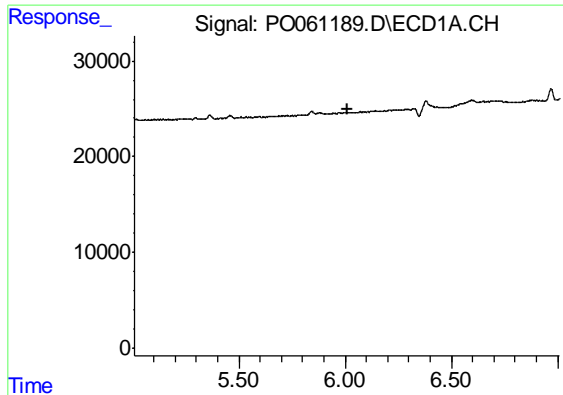
#2 Decachlorobiphenyl

R.T.: 10.023 min
 Delta R.T.: -0.004 min
 Response: 1096079
 Conc: 23.86 ng/ml



#2 Decachlorobiphenyl

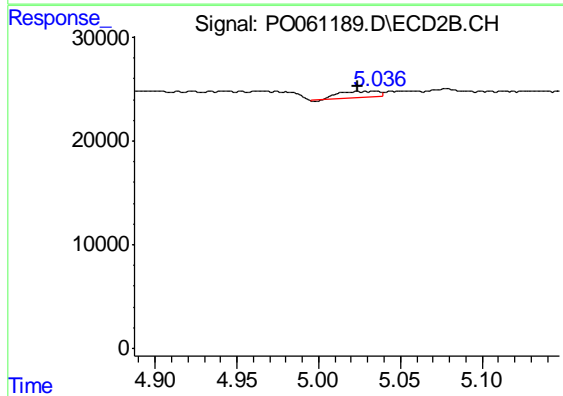
R.T.: 8.402 min
 Delta R.T.: -0.011 min
 Response: 819750
 Conc: 23.39 ng/ml



#7 AR-1016-5

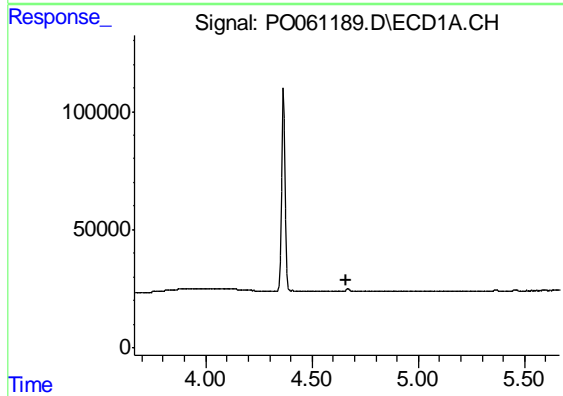
R.T.: 0.000 min
 Exp R.T. : 6.009 min
 Response: 0
 Conc: N.D.

Instrument :
 ECD_O
 ClientSampleId :
 I.BLK



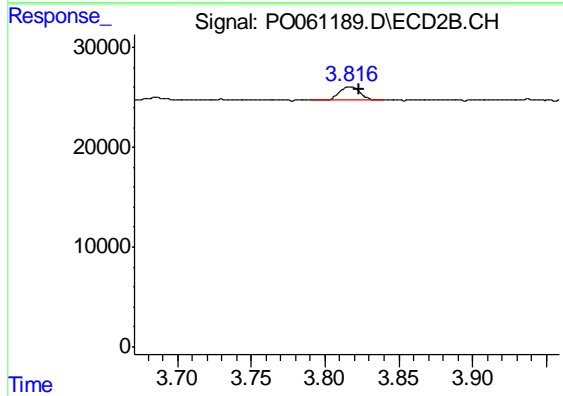
#7 AR-1016-5

R.T.: 5.035 min
 Delta R.T.: 0.011 min
 Response: 10983
 Conc: 10.49 ng/ml



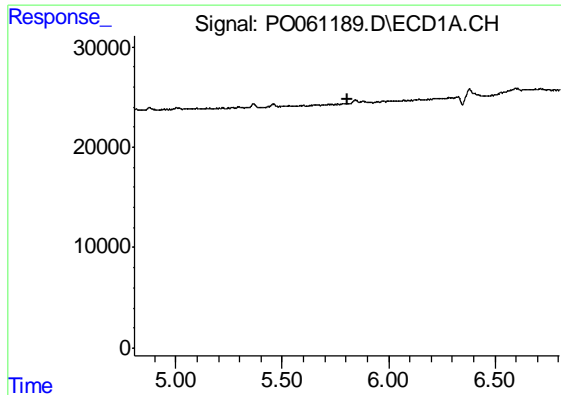
#9 AR-1221-2

R.T.: 0.000 min
 Exp R.T. : 4.664 min
 Response: 0
 Conc: N.D.



#9 AR-1221-2

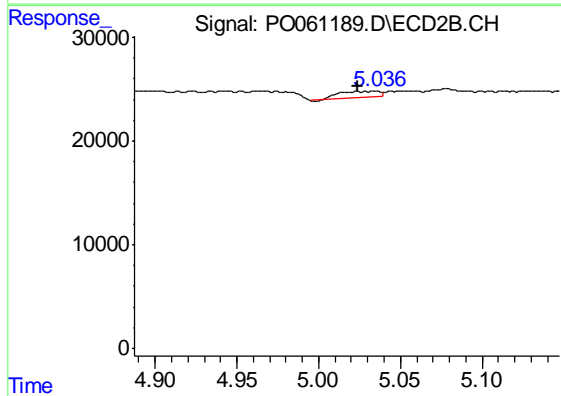
R.T.: 3.817 min
 Delta R.T.: -0.006 min
 Response: 13098
 Conc: 46.61 ng/ml



#15 AR-1232-5

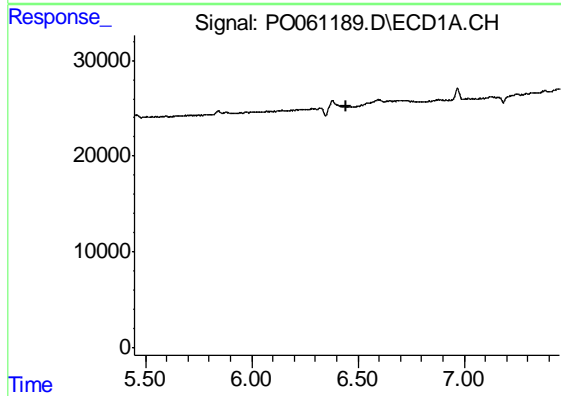
R.T.: 0.000 min
 Exp R.T. : 5.805 min
 Response: 0
 Conc: N.D.

Instrument :
 ECD_O
 ClientSampleId :
 I.BLK



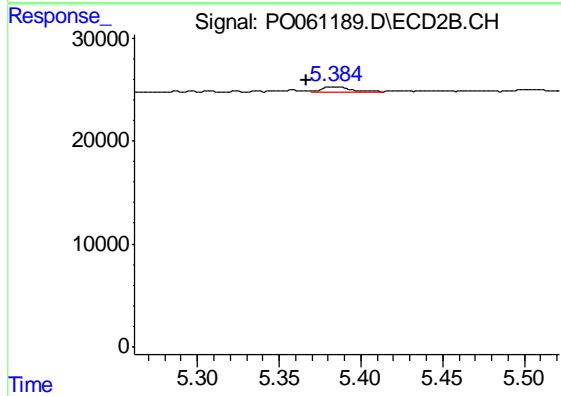
#15 AR-1232-5

R.T.: 5.035 min
 Delta R.T.: 0.011 min
 Response: 10983
 Conc: 19.41 ng/ml



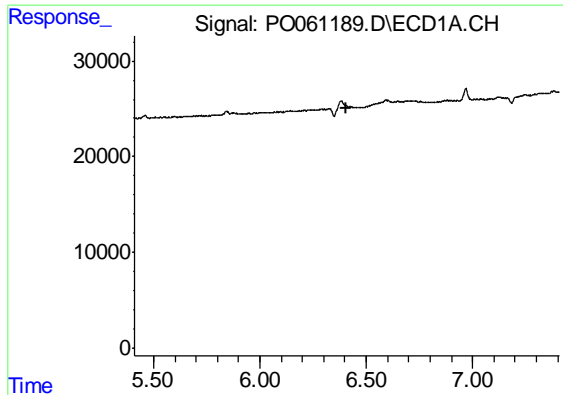
#20 AR-1242-5

R.T.: 0.000 min
 Exp R.T. : 6.448 min
 Response: 0
 Conc: N.D.



#20 AR-1242-5

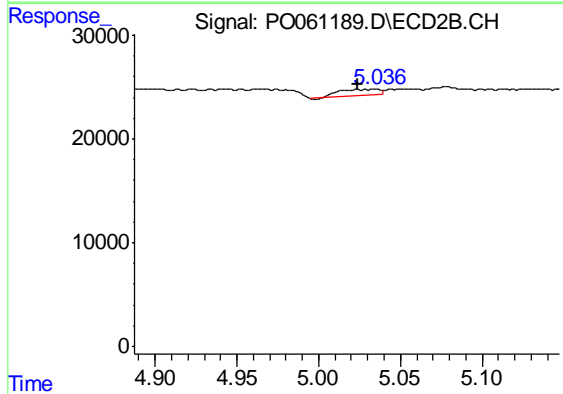
R.T.: 5.384 min
 Delta R.T.: 0.018 min
 Response: 6145
 Conc: 6.21 ng/ml



#24 AR-1248-4

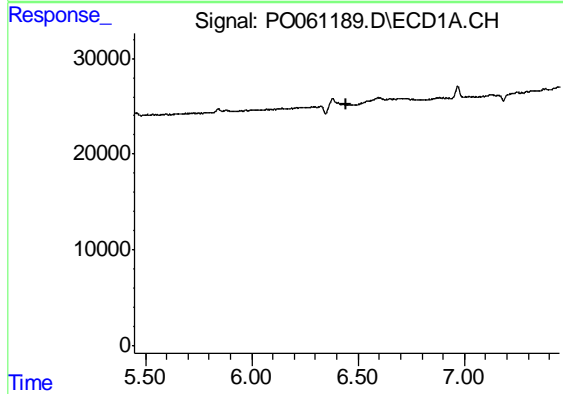
R.T.: 0.000 min
 Exp R.T. : 6.409 min
 Response: 0
 Conc: N.D.

Instrument :
 ECD_O
 ClientSampleId :
 I.BLK



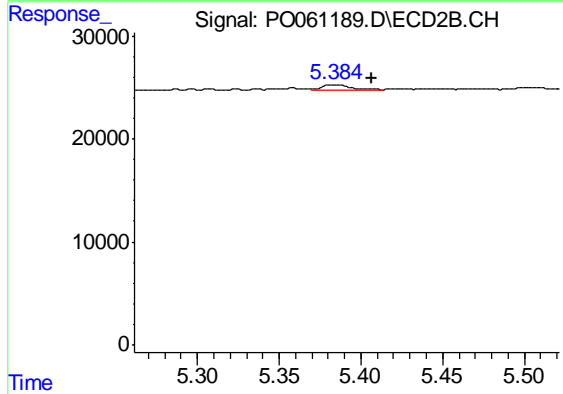
#24 AR-1248-4

R.T.: 5.035 min
 Delta R.T.: 0.012 min
 Response: 10983
 Conc: 9.15 ng/ml



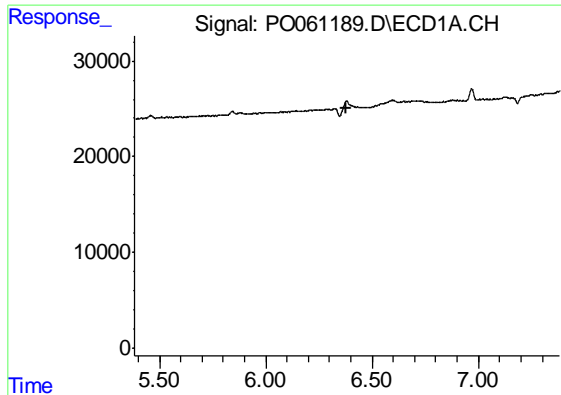
#25 AR-1248-5

R.T.: 0.000 min
 Exp R.T. : 6.448 min
 Response: 0
 Conc: N.D.



#25 AR-1248-5

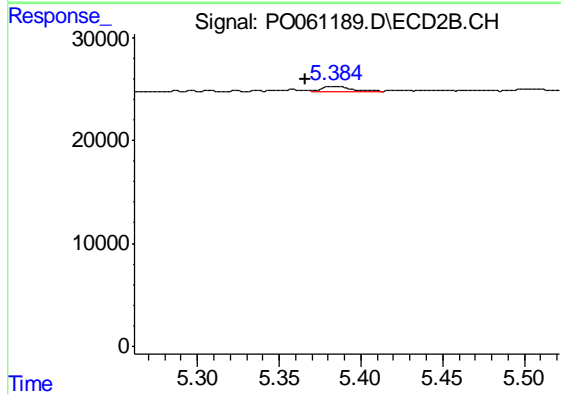
R.T.: 5.384 min
 Delta R.T.: -0.022 min
 Response: 6145
 Conc: 4.86 ng/ml



#26 AR-1254-1

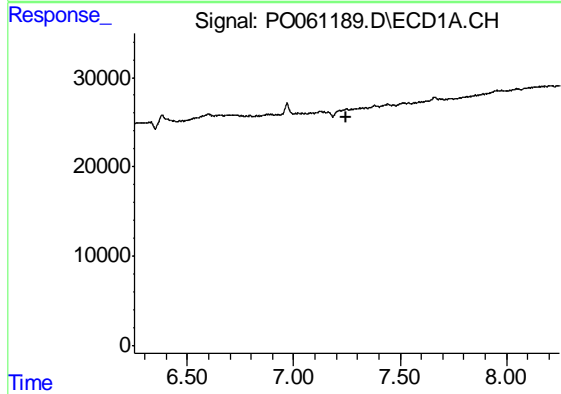
R.T.: 0.000 min
 Exp R.T. : 6.382 min
 Response: 0
 Conc: N.D.

Instrument :
 ECD_O
 ClientSampleId :
 I.BLK



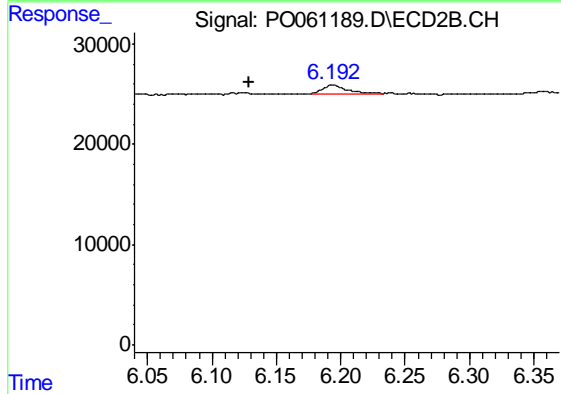
#26 AR-1254-1

R.T.: 5.384 min
 Delta R.T.: 0.018 min
 Response: 6145
 Conc: 2.98 ng/ml



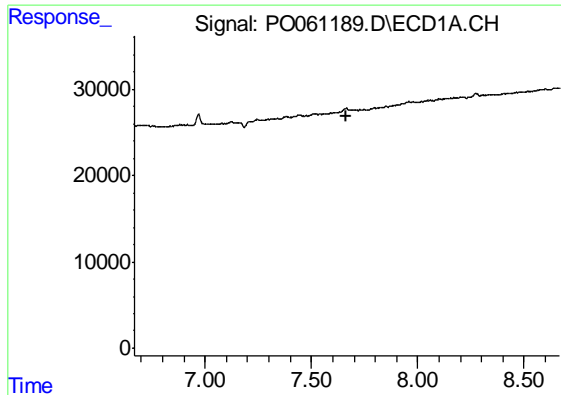
#29 AR-1254-4

R.T.: 0.000 min
 Exp R.T. : 7.250 min
 Response: 0
 Conc: N.D.



#29 AR-1254-4

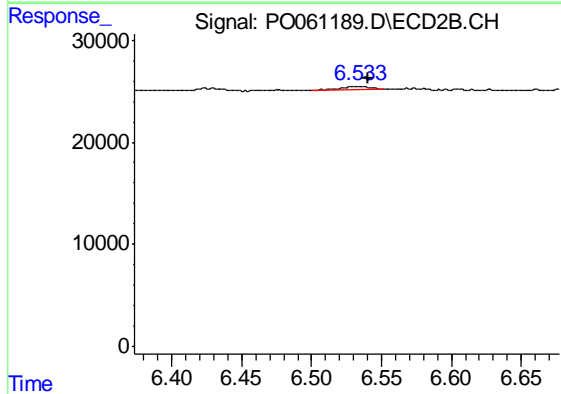
R.T.: 6.193 min
 Delta R.T.: 0.064 min
 Response: 11589
 Conc: 5.57 ng/ml



#30 AR-1254-5

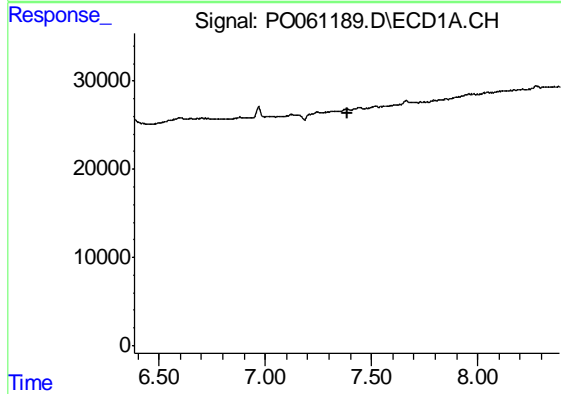
R.T.: 0.000 min
 Exp R.T. : 7.667 min
 Response: 0
 Conc: N.D.

Instrument :
 ECD_O
 ClientSampleId :
 I.BLK



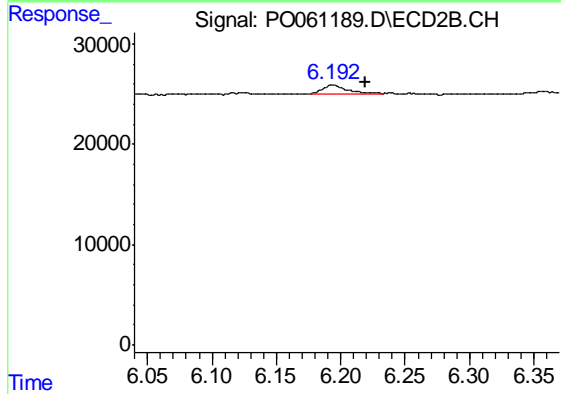
#30 AR-1254-5

R.T.: 6.534 min
 Delta R.T.: -0.006 min
 Response: 5146
 Conc: 1.63 ng/ml



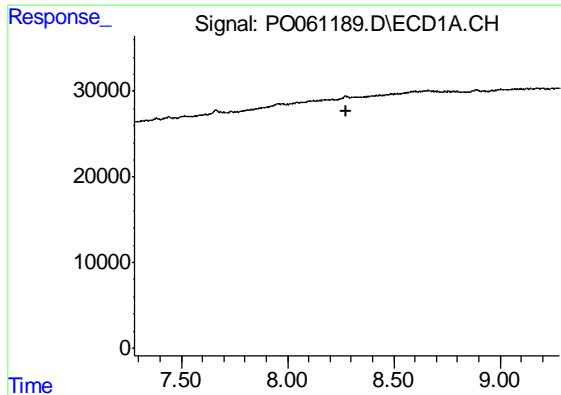
#32 AR-1260-2

R.T.: 0.000 min
 Exp R.T. : 7.384 min
 Response: 0
 Conc: N.D.



#32 AR-1260-2

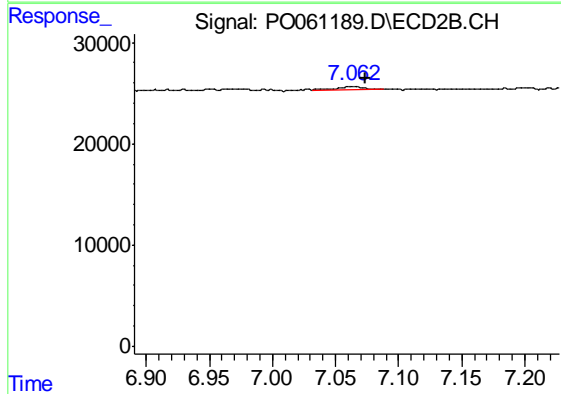
R.T.: 6.193 min
 Delta R.T.: -0.026 min
 Response: 11589
 Conc: 4.49 ng/ml



#35 AR-1260-5

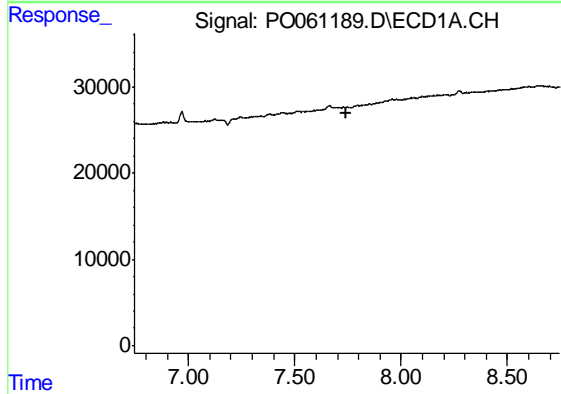
R.T.: 0.000 min
 Exp R.T. : 8.279 min
 Response: 0
 Conc: N.D.

Instrument :
 ECD_O
 ClientSampleId :
 I.BLK



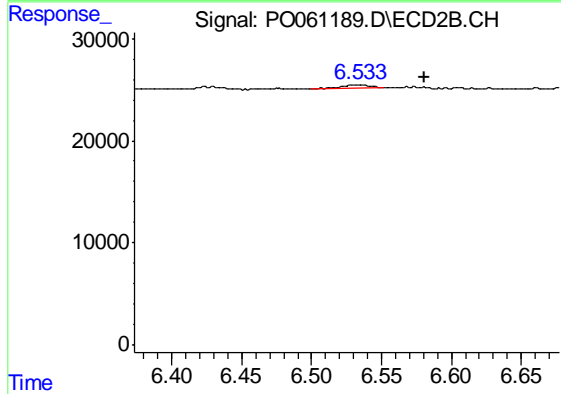
#35 AR-1260-5

R.T.: 7.063 min
 Delta R.T.: -0.010 min
 Response: 4936
 Conc: 1.02 ng/ml



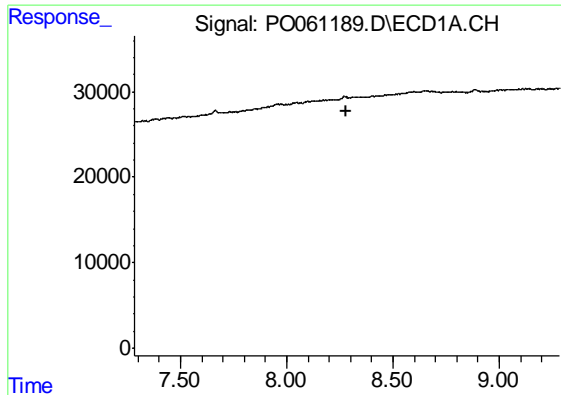
#36 AR-1262-1

R.T.: 0.000 min
 Exp R.T. : 7.745 min
 Response: 0
 Conc: N.D.



#36 AR-1262-1

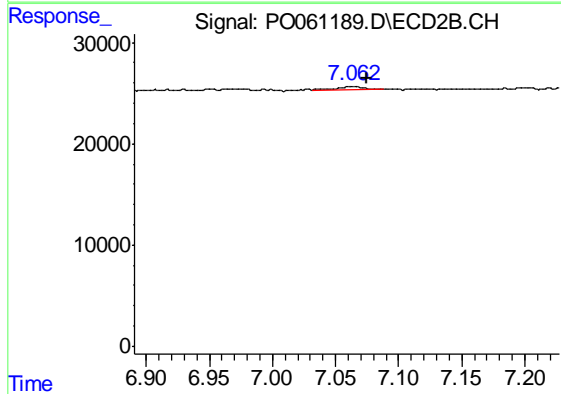
R.T.: 6.534 min
 Delta R.T.: -0.047 min
 Response: 5146
 Conc: 1.72 ng/ml



#37 AR-1262-2

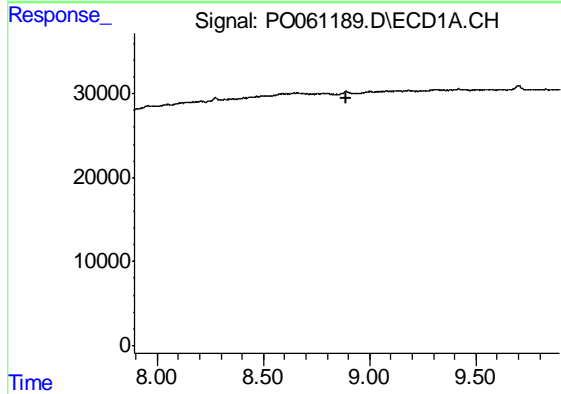
R.T.: 0.000 min
 Exp R.T. : 8.283 min
 Response: 0
 Conc: N.D.

Instrument :
 ECD_O
 ClientSampleId :
 I.BLK



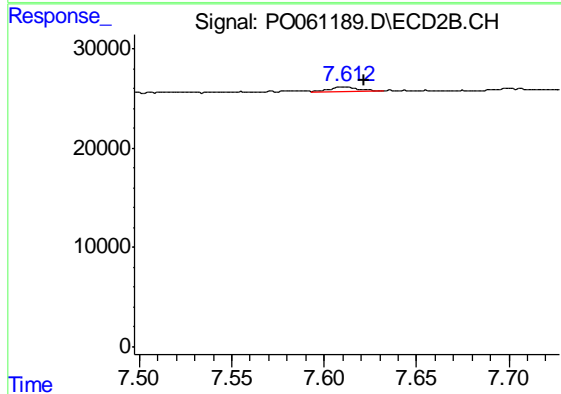
#37 AR-1262-2

R.T.: 7.063 min
 Delta R.T.: -0.012 min
 Response: 4936
 Conc: 0.95 ng/ml



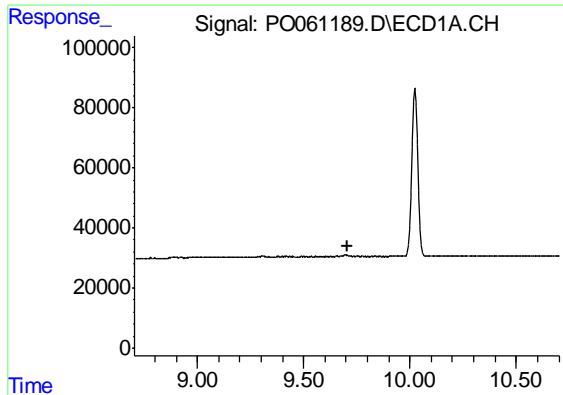
#43 AR-1268-3

R.T.: 0.000 min
 Exp R.T. : 8.893 min
 Response: 0
 Conc: N.D.



#43 AR-1268-3

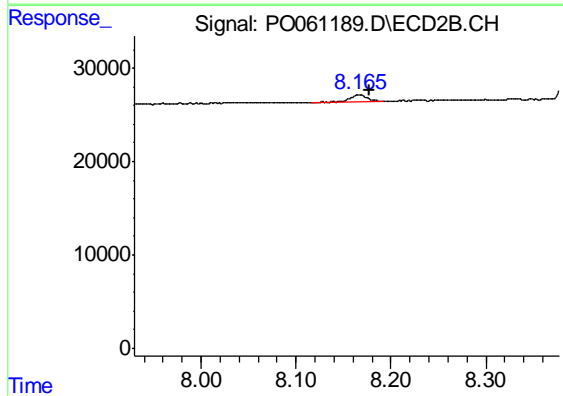
R.T.: 7.613 min
 Delta R.T.: -0.009 min
 Response: 4589
 Conc: 1.04 ng/ml



#45 AR-1268-5

R.T.: 0.000 min
 Exp R.T. : 9.704 min
 Response: 0
 Conc: N.D.

Instrument :
 ECD_O
 ClientSampleId :
 I.BLK



#45 AR-1268-5

R.T.: 8.166 min
 Delta R.T.: -0.011 min
 Response: 9658
 Conc: 0.80 ng/ml