

Data Path : Z:\pestpcbsrv\HPCHEM1\ECD_O\Data\P0091922\
 Data File : P0089632.D
 Signal(s) : Signal #1: ECD1A.ch Signal #2: ECD2B.ch
 Acq On : 19 Sep 2022 18:48
 Operator : YP/AJ
 Sample : AR1660ICC500
 Misc :
 ALS Vial : 5 Sample Multiplier: 1

Instrument :
 ECD_O
 ClientSampleId :

Integration File signal 1: autoint1.e
 Integration File signal 2: autoint2.e
 Quant Time: Sep 20 00:38:04 2022
 Quant Method : Z:\pestpcbsrv\HPCHEM1\ECD_O\methods\P0091922.M
 Quant Title : GC EXTRACTABLES
 QLast Update : Tue Sep 20 00:37:34 2022
 Response via : Initial Calibration
 Integrator: ChemStation

Volume Inj. : 2 µl
 Signal #1 Phase : ZB-MR1 Signal #2 Phase: ZB-MR2
 Signal #1 Info : 30Mx0.32mmx 0.50µ Signal #2 Info : 30M x 0.32mm x 0.25µm

Compound	RT#1	RT#2	Resp#1	Resp#2	ng/ml	ng/ml

System Monitoring Compounds						
1) SA Tetrachlo...	4.472	3.662	162.5E6	95787049	50.000	50.000
2) SA Decachlor...	10.356	8.766	123.4E6	59574718	50.000	50.000
Target Compounds						
3) L1 AR-1016-1	5.651	4.765	49985884	26428822	500.000	500.000
4) L1 AR-1016-2	5.674	4.785	74131273	38750260	500.000	500.000
5) L1 AR-1016-3	5.738	4.963	46350503	19913914	500.000	500.000
6) L1 AR-1016-4	5.838	5.006	37044351	16189744	500.000	500.000
7) L1 AR-1016-5	6.134	5.223	36165809	21066467	500.000	500.000
31) L7 AR-1260-1	7.270	6.272	65744372	38088894	500.000	500.000
32) L7 AR-1260-2	7.528	6.461	77886603	45461179	500.000	500.000
33) L7 AR-1260-3	7.891	6.618	57669488	42291821	500.000	500.000
34) L7 AR-1260-4	8.119	7.096	65776703	33974408	500.000	500.000
35) L7 AR-1260-5	8.451	7.338	129.4E6	77820633	500.000	500.000

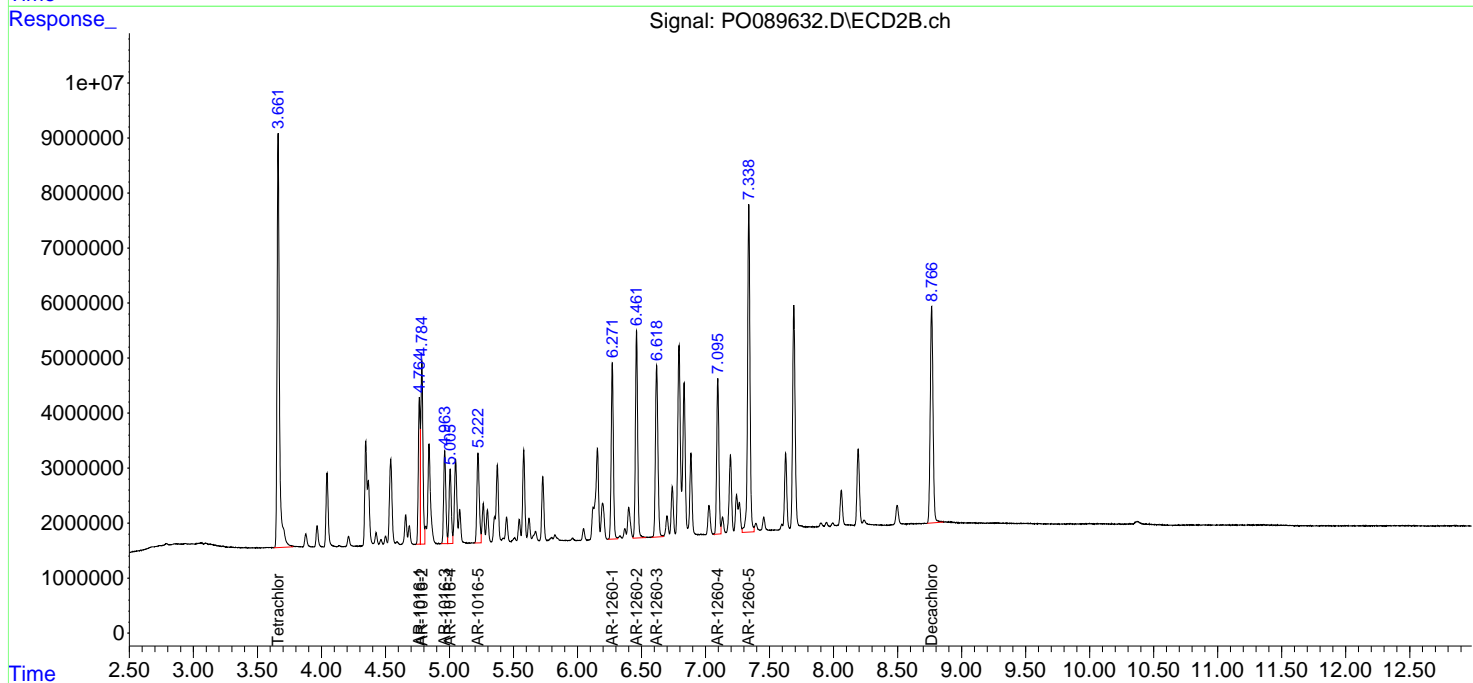
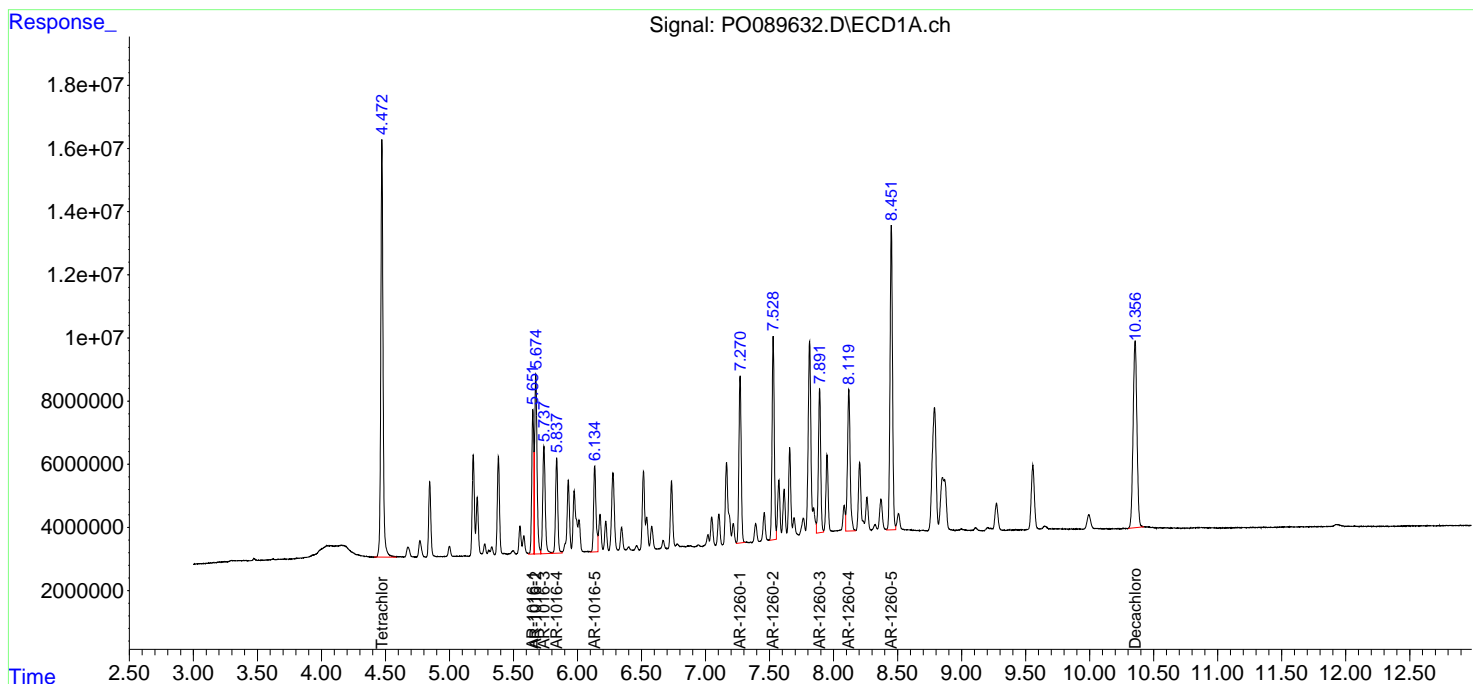
(f)=RT Delta > 1/2 Window (#)=Amounts differ by > 25% (m)=manual int.

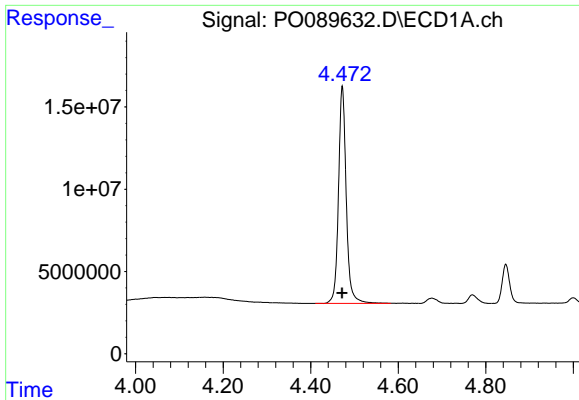
Data Path : Z:\pestpcbsrv\HPCHEM1\ECD_O\Data\PO091922\
 Data File : PO089632.D
 Signal(s) : Signal #1: ECD1A.ch Signal #2: ECD2B.ch
 Acq On : 19 Sep 2022 18:48
 Operator : YP/AJ
 Sample : AR1660ICC500
 Misc :
 ALS Vial : 5 Sample Multiplier: 1

Instrument :
 ECD_O
 ClientSampleId :

Integration File signal 1: autoint1.e
 Integration File signal 2: autoint2.e
 Quant Time: Sep 20 00:38:04 2022
 Quant Method : Z:\pestpcbsrv\HPCHEM1\ECD_O\methods\PO091922.M
 Quant Title : GC EXTRACTABLES
 QLast Update : Tue Sep 20 00:37:34 2022
 Response via : Initial Calibration
 Integrator: ChemStation

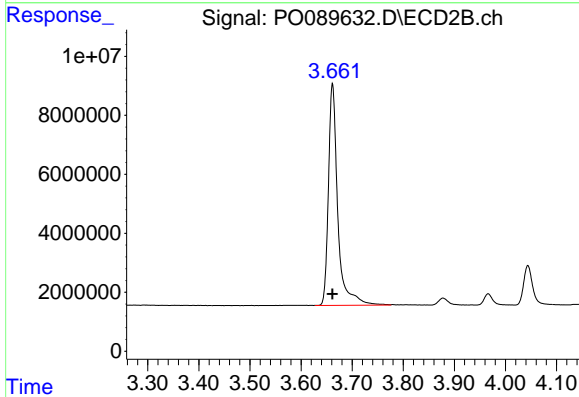
Volume Inj. : 2 µl
 Signal #1 Phase : ZB-MR1 Signal #2 Phase: ZB-MR2
 Signal #1 Info : 30Mx0.32mmx 0.50µ Signal #2 Info : 30M x 0.32mm x 0.25µm



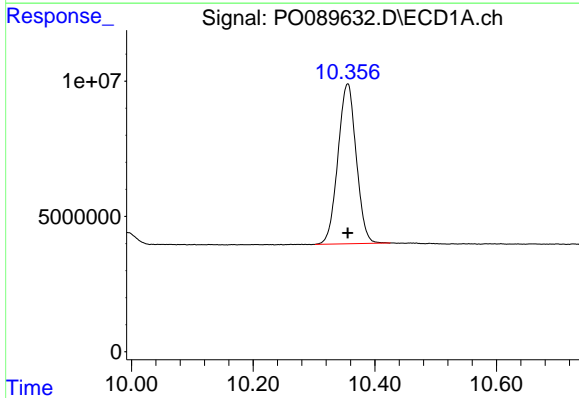


#1 Tetrachloro-m-xylene
R.T.: 4.472 min
Delta R.T.: 0.000 min
Response: 162523513
Conc: 50.00 ng/ml

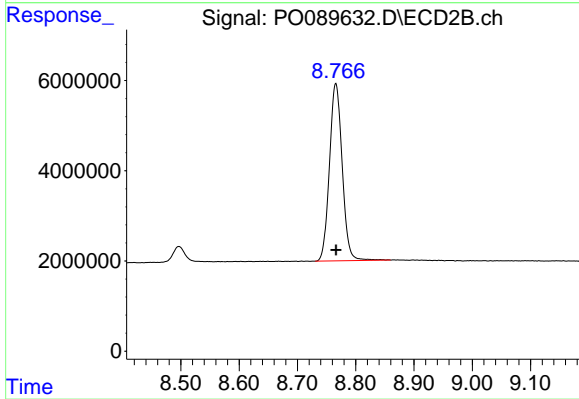
Instrument :
ECD_O
ClientSampleId :



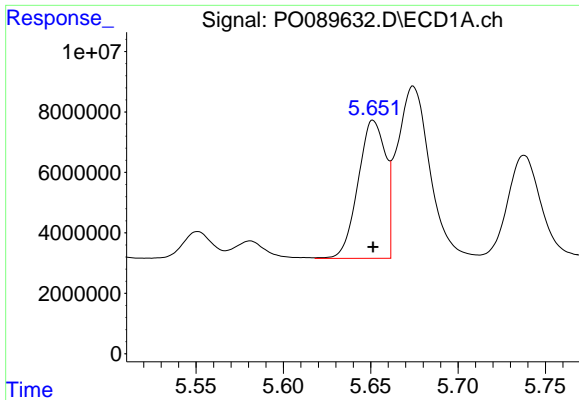
#1 Tetrachloro-m-xylene
R.T.: 3.662 min
Delta R.T.: 0.000 min
Response: 95787049
Conc: 50.00 ng/ml



#2 Decachlorobiphenyl
R.T.: 10.356 min
Delta R.T.: 0.000 min
Response: 123439639
Conc: 50.00 ng/ml



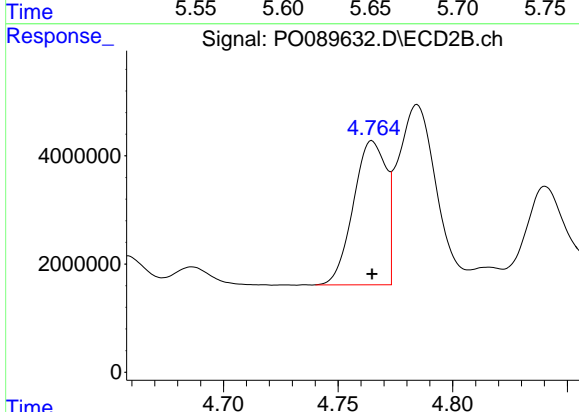
#2 Decachlorobiphenyl
R.T.: 8.766 min
Delta R.T.: 0.000 min
Response: 59574718
Conc: 50.00 ng/ml



#3 AR-1016-1

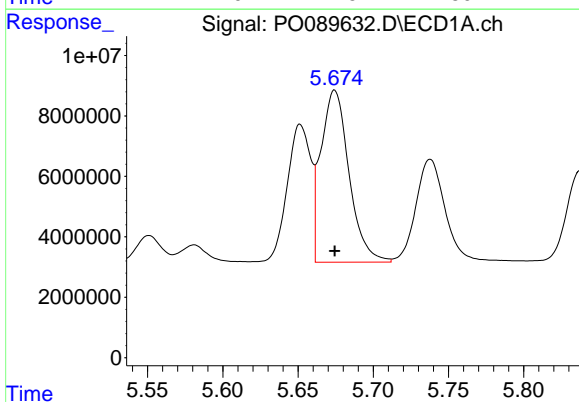
R.T.: 5.651 min
 Delta R.T.: 0.000 min
 Response: 49985884
 Conc: 500.00 ng/ml

Instrument :
 ECD_O
 ClientSampleId :



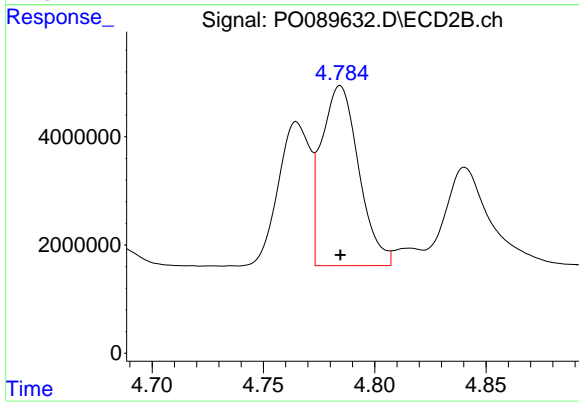
#3 AR-1016-1

R.T.: 4.765 min
 Delta R.T.: 0.000 min
 Response: 26428822
 Conc: 500.00 ng/ml



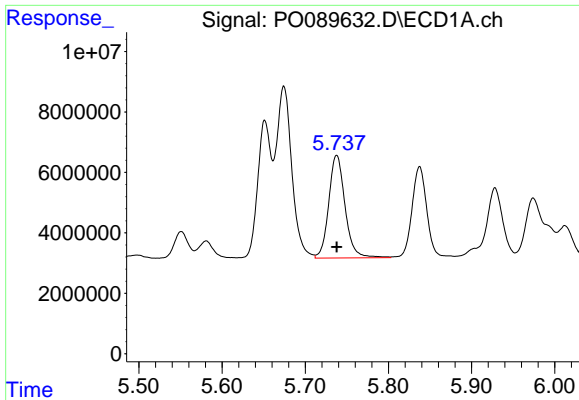
#4 AR-1016-2

R.T.: 5.674 min
 Delta R.T.: 0.000 min
 Response: 74131273
 Conc: 500.00 ng/ml



#4 AR-1016-2

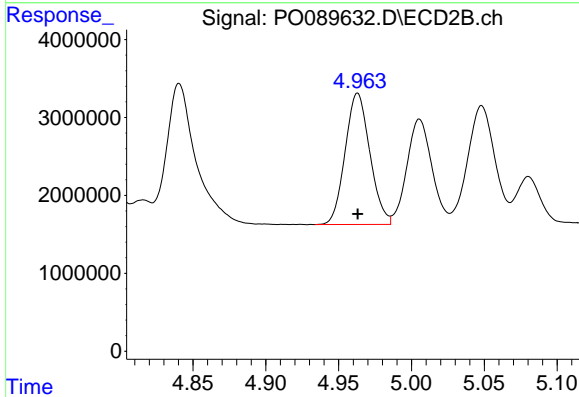
R.T.: 4.785 min
 Delta R.T.: 0.000 min
 Response: 38750260
 Conc: 500.00 ng/ml



#5 AR-1016-3

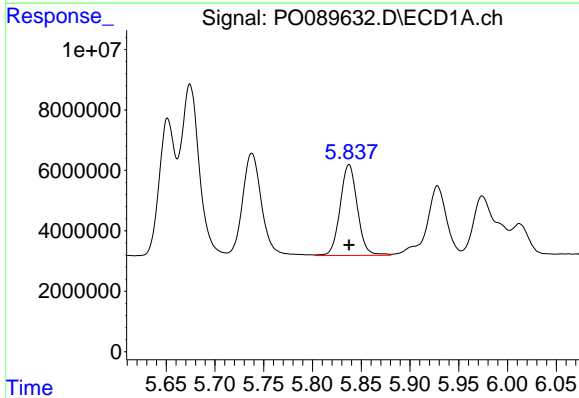
R.T.: 5.738 min
 Delta R.T.: 0.000 min
 Response: 46350503
 Conc: 500.00 ng/ml

Instrument :
 ECD_O
 ClientSampleId :



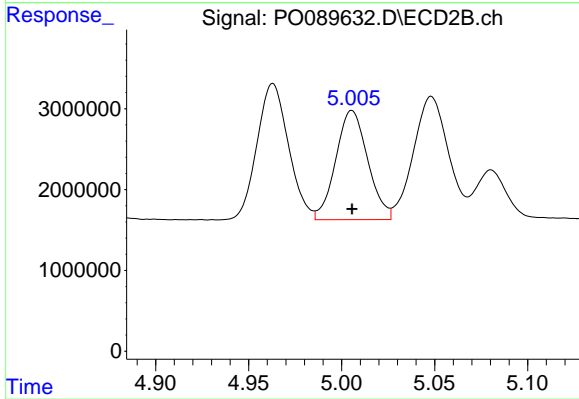
#5 AR-1016-3

R.T.: 4.963 min
 Delta R.T.: 0.000 min
 Response: 19913914
 Conc: 500.00 ng/ml



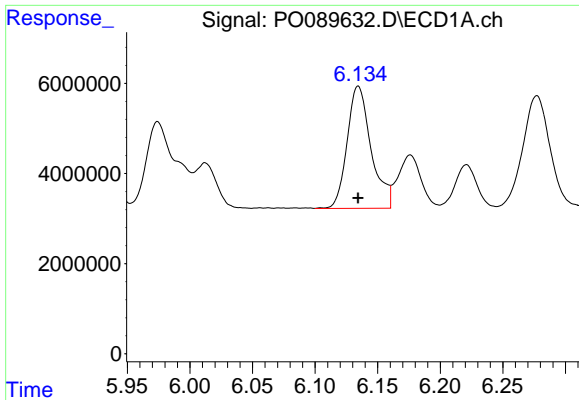
#6 AR-1016-4

R.T.: 5.838 min
 Delta R.T.: 0.000 min
 Response: 37044351
 Conc: 500.00 ng/ml



#6 AR-1016-4

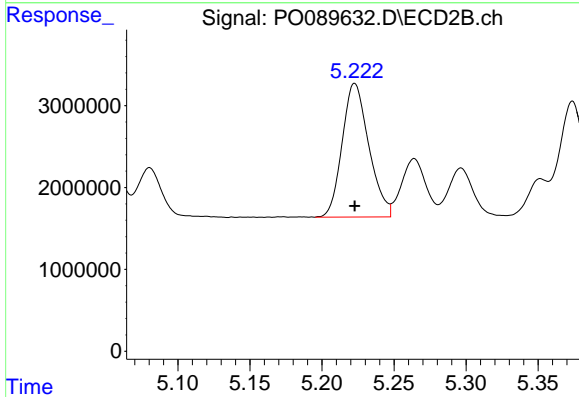
R.T.: 5.006 min
 Delta R.T.: 0.000 min
 Response: 16189744
 Conc: 500.00 ng/ml



#7 AR-1016-5

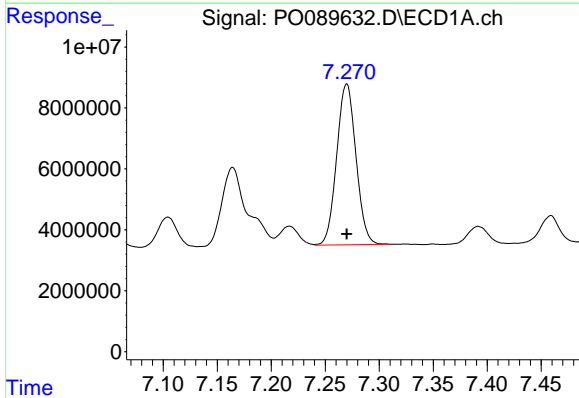
R.T.: 6.134 min
 Delta R.T.: 0.000 min
 Response: 36165809
 Conc: 500.00 ng/ml

Instrument :
 ECD_O
 ClientSampleId :



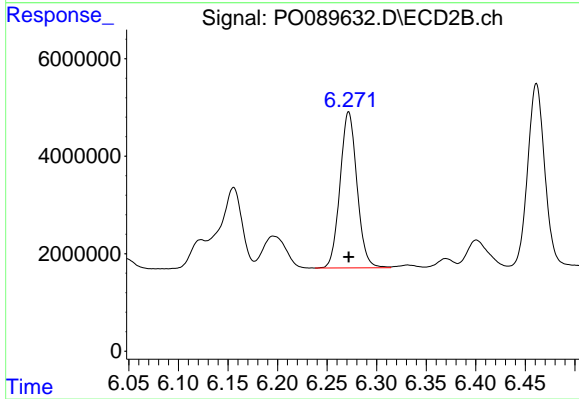
#7 AR-1016-5

R.T.: 5.223 min
 Delta R.T.: 0.000 min
 Response: 21066467
 Conc: 500.00 ng/ml



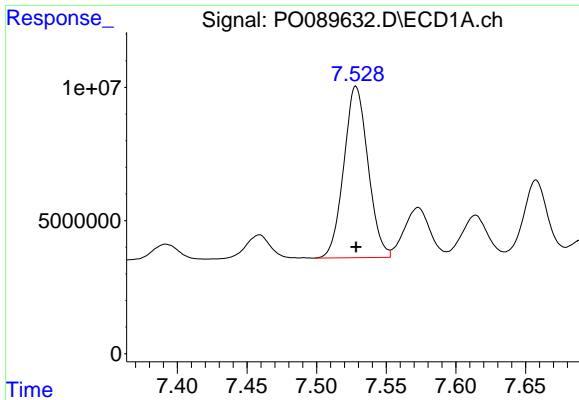
#31 AR-1260-1

R.T.: 7.270 min
 Delta R.T.: 0.000 min
 Response: 65744372
 Conc: 500.00 ng/ml



#31 AR-1260-1

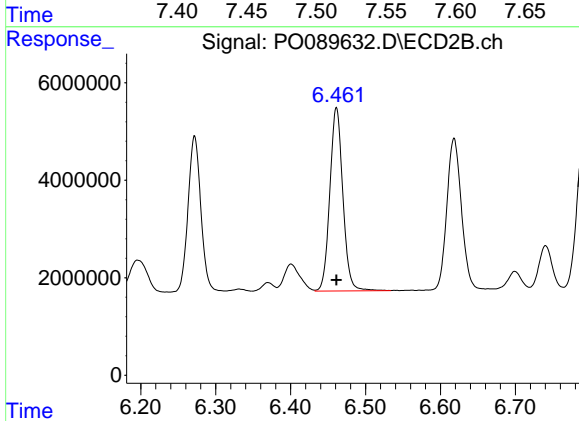
R.T.: 6.272 min
 Delta R.T.: 0.000 min
 Response: 38088894
 Conc: 500.00 ng/ml



#32 AR-1260-2

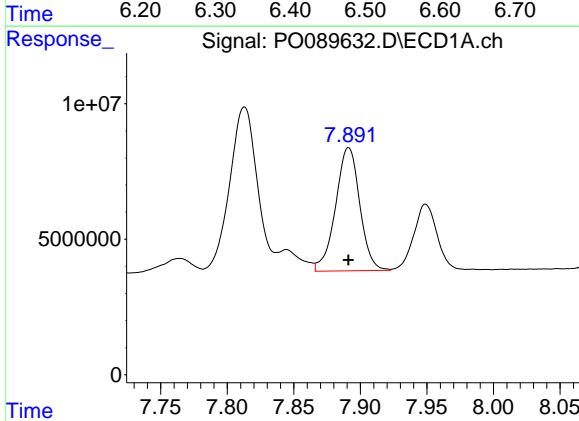
R.T.: 7.528 min
Delta R.T.: 0.000 min
Response: 77886603
Conc: 500.00 ng/ml

Instrument :
ECD_O
ClientSampleId :



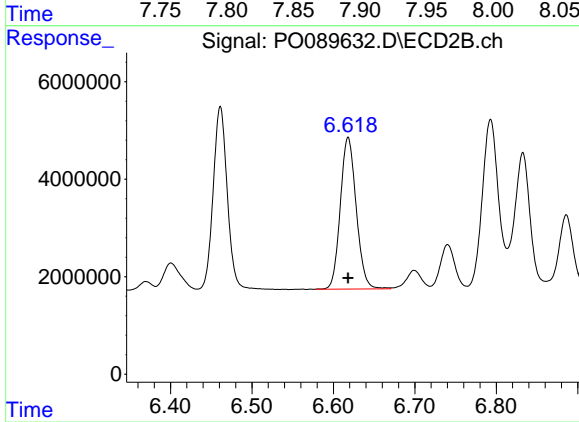
#32 AR-1260-2

R.T.: 6.461 min
Delta R.T.: 0.000 min
Response: 45461179
Conc: 500.00 ng/ml



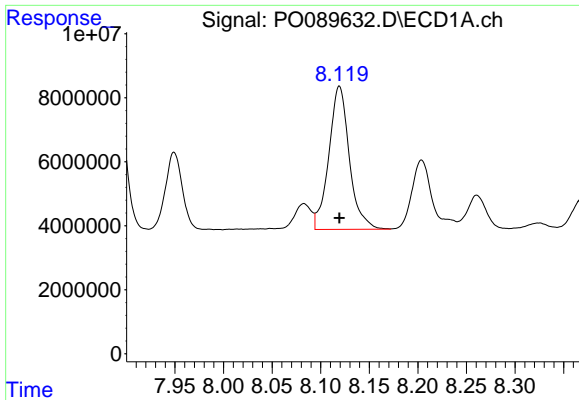
#33 AR-1260-3

R.T.: 7.891 min
Delta R.T.: 0.000 min
Response: 57669488
Conc: 500.00 ng/ml



#33 AR-1260-3

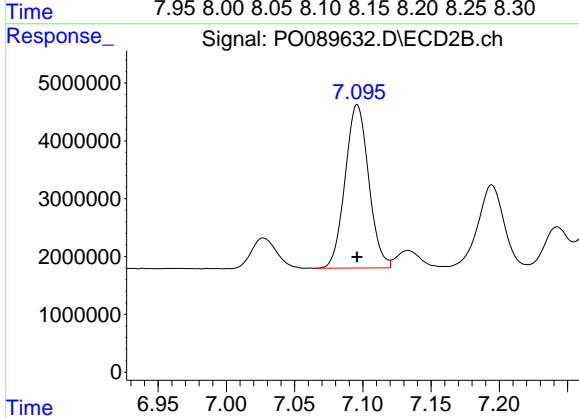
R.T.: 6.618 min
Delta R.T.: 0.000 min
Response: 42291821
Conc: 500.00 ng/ml



#34 AR-1260-4

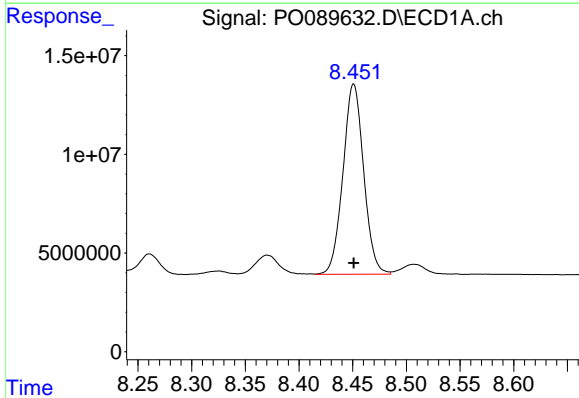
R.T.: 8.119 min
 Delta R.T.: 0.000 min
 Response: 65776703
 Conc: 500.00 ng/ml

Instrument :
 ECD_O
 ClientSampleId :



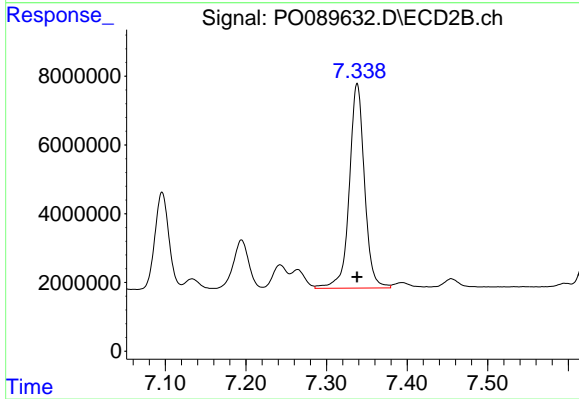
#34 AR-1260-4

R.T.: 7.096 min
 Delta R.T.: 0.000 min
 Response: 33974408
 Conc: 500.00 ng/ml



#35 AR-1260-5

R.T.: 8.451 min
 Delta R.T.: 0.000 min
 Response: 129423916
 Conc: 500.00 ng/ml



#35 AR-1260-5

R.T.: 7.338 min
 Delta R.T.: 0.000 min
 Response: 77820633
 Conc: 500.00 ng/ml