

Data Path : Z:\pestpcbsrv\HPCHEM1\ECD_O\Data\P0091922\
 Data File : P0089634.D
 Signal(s) : Signal #1: ECD1A.ch Signal #2: ECD2B.ch
 Acq On : 19 Sep 2022 19:22
 Operator : YP/AJ
 Sample : AR1660ICC050
 Misc :
 ALS Vial : 7 Sample Multiplier: 1

Instrument :
 ECD_O
 ClientSampleId :
 AR1660ICC050

Integration File signal 1: autoint1.e
 Integration File signal 2: autoint2.e
 Quant Time: Sep 20 00:49:31 2022
 Quant Method : Z:\pestpcbsrv\HPCHEM1\ECD_O\methods\P0091922.M
 Quant Title : GC EXTRACTABLES
 QLast Update : Tue Sep 20 00:37:34 2022
 Response via : Initial Calibration
 Integrator: ChemStation

Volume Inj. : 2 µl
 Signal #1 Phase : ZB-MR2 Signal #2 Phase: ZB-MR2
 Signal #1 Info : 30Mx0.32mmx 0.50µ Signal #2 Info : 30M x 0.32mm x 0.25µm

Compound	RT#1	RT#2	Resp#1	Resp#2	ng/ml	ng/ml

System Monitoring Compounds						
1) SA Tetrachlo...	4.472	3.662	14471047	7843358	4.616	4.312
2) SA Decachlor...	10.354	8.767	10899409	5506216	4.618	4.795
Target Compounds						
3) L1 AR-1016-1	5.652	4.765	5020690	2489187	50.520	48.871
4) L1 AR-1016-2	5.675	4.785	7159172	3638184	49.788	48.298
5) L1 AR-1016-3	5.739	4.963	5312655	1853323	56.621	48.127
6) L1 AR-1016-4	5.837	5.006	3495606	1632562	48.842	51.537
7) L1 AR-1016-5	6.135	5.223	3354815	2223384	48.390	53.297
31) L7 AR-1260-1	7.271	6.272	6050645	3783756	47.757	50.699
32) L7 AR-1260-2	7.530	6.462	7416619	4752211	48.883	52.674
33) L7 AR-1260-3	7.892	6.617	5664514	4432707	49.920	52.883
34) L7 AR-1260-4	8.121	7.095	5942708	3376893	47.060	50.838
35) L7 AR-1260-5	8.451	7.338	12014672	6931912	47.725	46.497

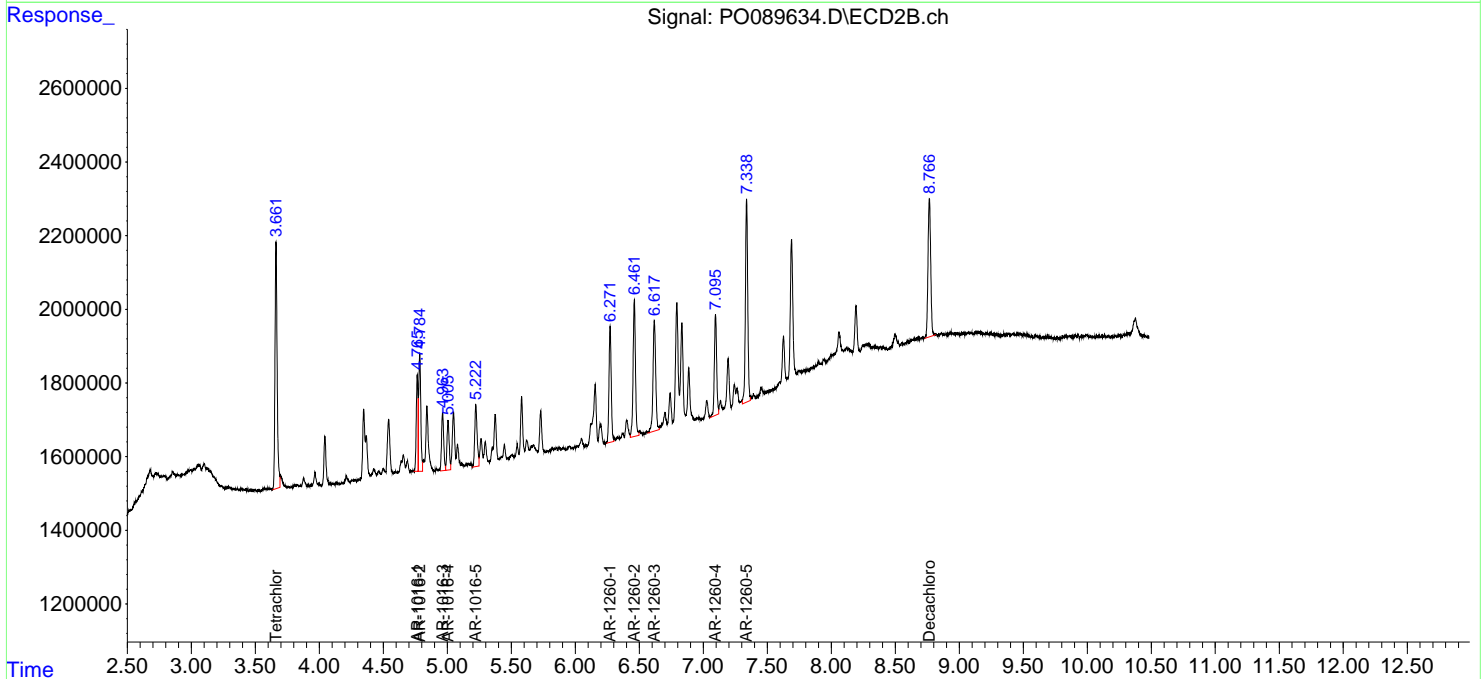
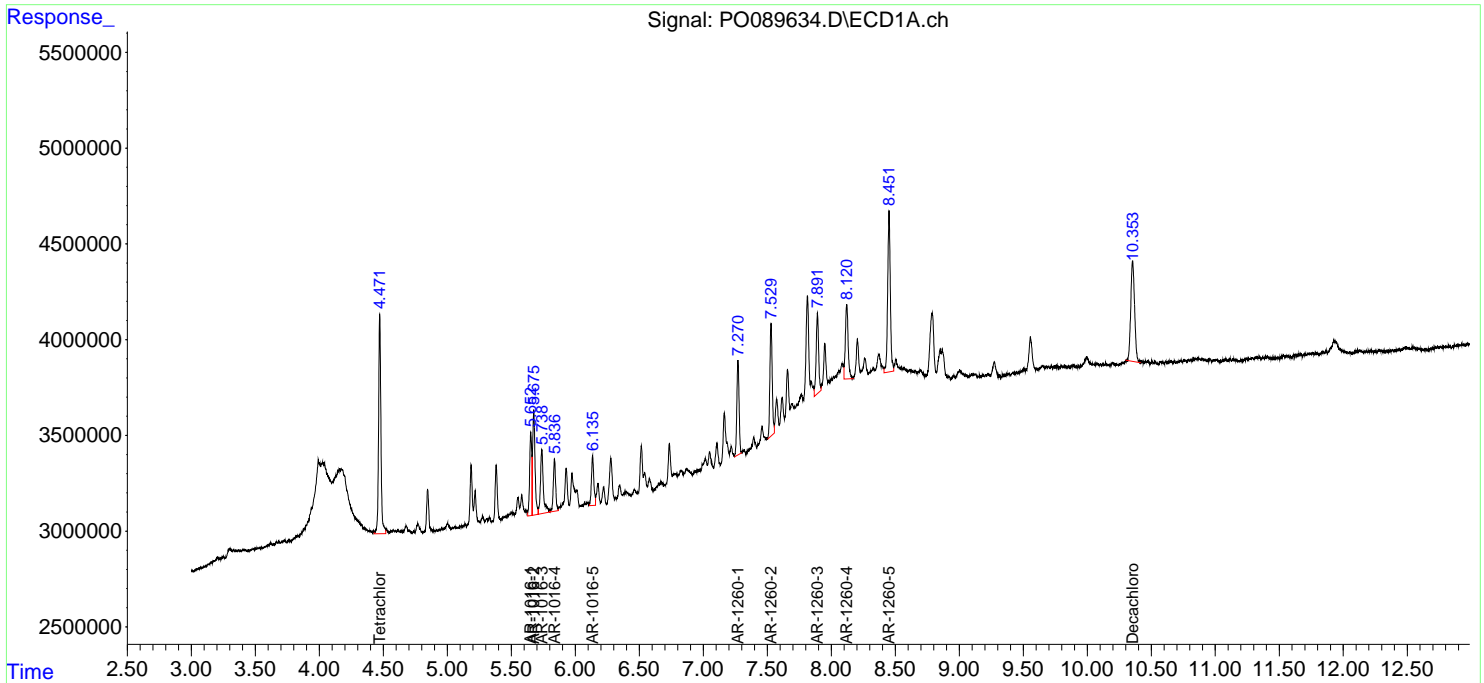
(f)=RT Delta > 1/2 Window (#)=Amounts differ by > 25% (m)=manual int.

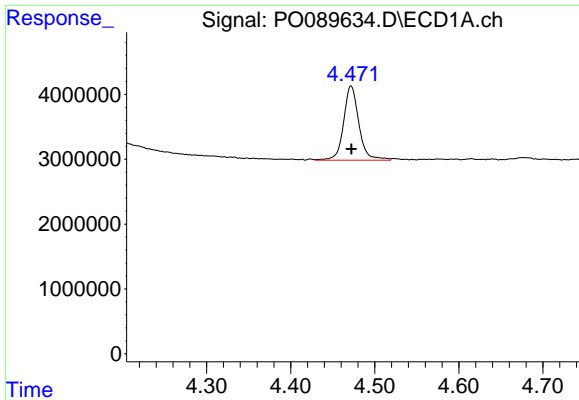
Data Path : Z:\pestpcbsrv\HPCHEM1\ECD_O\Data\PO091922\
 Data File : PO089634.D
 Signal(s) : Signal #1: ECD1A.ch Signal #2: ECD2B.ch
 Acq On : 19 Sep 2022 19:22
 Operator : YP/AJ
 Sample : AR1660ICC050
 Misc :
 ALS Vial : 7 Sample Multiplier: 1

Instrument :
 ECD_O
 ClientSampleId :
 AR1660ICC050

Integration File signal 1: autoint1.e
 Integration File signal 2: autoint2.e
 Quant Time: Sep 20 00:49:31 2022
 Quant Method : Z:\pestpcbsrv\HPCHEM1\ECD_O\methods\PO091922.M
 Quant Title : GC EXTRACTABLES
 QLast Update : Tue Sep 20 00:37:34 2022
 Response via : Initial Calibration
 Integrator: ChemStation

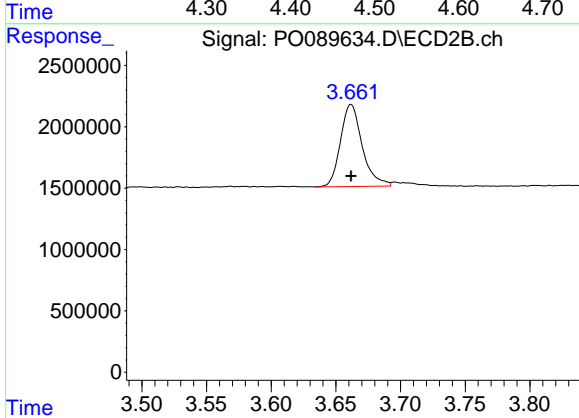
Volume Inj. : 2 µl
 Signal #1 Phase : ZB-MR1 Signal #2 Phase: ZB-MR2
 Signal #1 Info : 30Mx0.32mmx 0.50µ Signal #2 Info : 30M x 0.32mm x 0.25µm



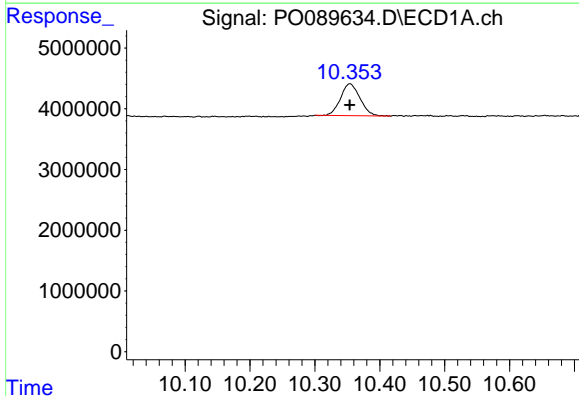


#1 Tetrachloro-m-xylene
 R.T.: 4.472 min
 Delta R.T.: 0.000 min
 Response: 14471047
 Conc: 4.62 ng/ml

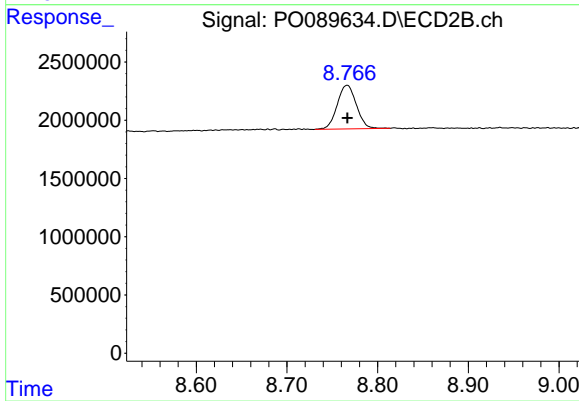
Instrument :
 ECD_O
 ClientSampleId :
 AR1660ICC050



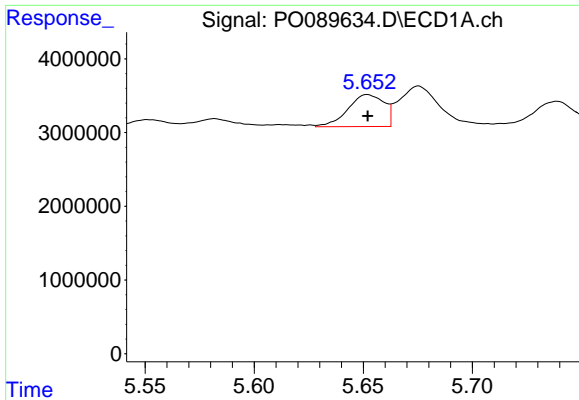
#1 Tetrachloro-m-xylene
 R.T.: 3.662 min
 Delta R.T.: 0.000 min
 Response: 7843358
 Conc: 4.31 ng/ml



#2 Decachlorobiphenyl
 R.T.: 10.354 min
 Delta R.T.: 0.000 min
 Response: 10899409
 Conc: 4.62 ng/ml



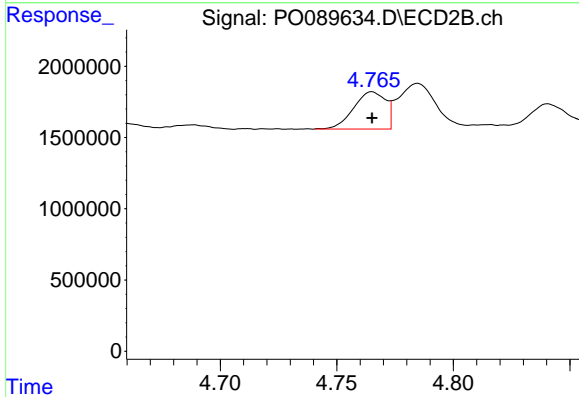
#2 Decachlorobiphenyl
 R.T.: 8.767 min
 Delta R.T.: 0.000 min
 Response: 5506216
 Conc: 4.79 ng/ml



#3 AR-1016-1

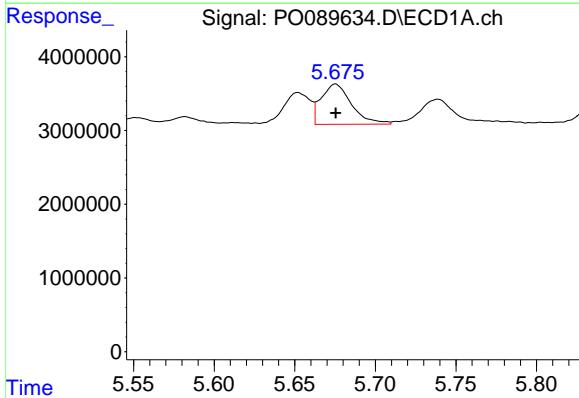
R.T.: 5.652 min
 Delta R.T.: 0.000 min
 Response: 5020690
 Conc: 50.52 ng/ml

Instrument :
 ECD_O
 ClientSampleId :
 AR1660ICC050



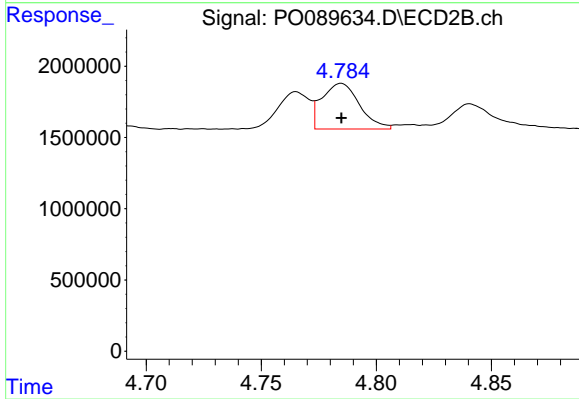
#3 AR-1016-1

R.T.: 4.765 min
 Delta R.T.: 0.000 min
 Response: 2489187
 Conc: 48.87 ng/ml



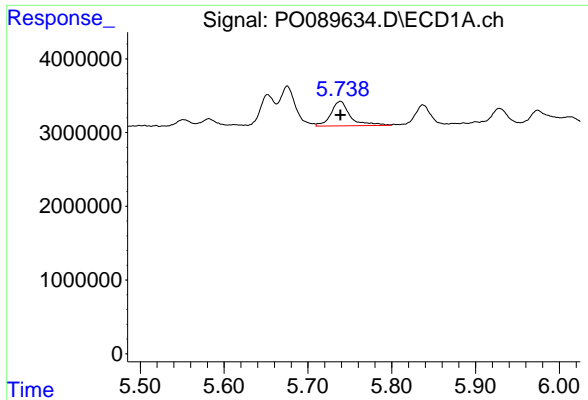
#4 AR-1016-2

R.T.: 5.675 min
 Delta R.T.: 0.000 min
 Response: 7159172
 Conc: 49.79 ng/ml



#4 AR-1016-2

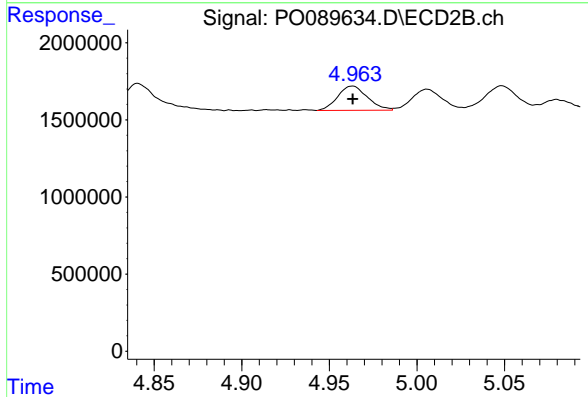
R.T.: 4.785 min
 Delta R.T.: 0.000 min
 Response: 3638184
 Conc: 48.30 ng/ml



#5 AR-1016-3

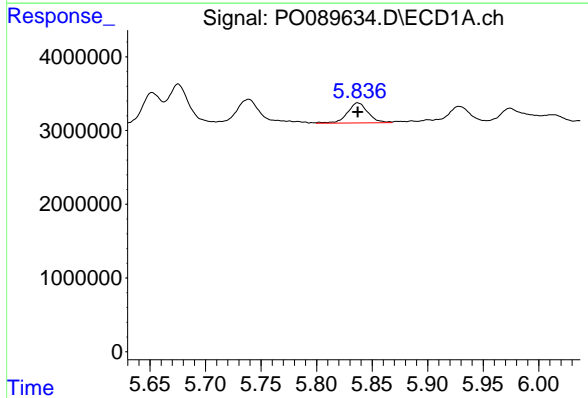
R.T.: 5.739 min
 Delta R.T.: 0.000 min
 Response: 5312655
 Conc: 56.62 ng/ml

Instrument :
 ECD_O
 ClientSampleId :
 AR1660ICC050



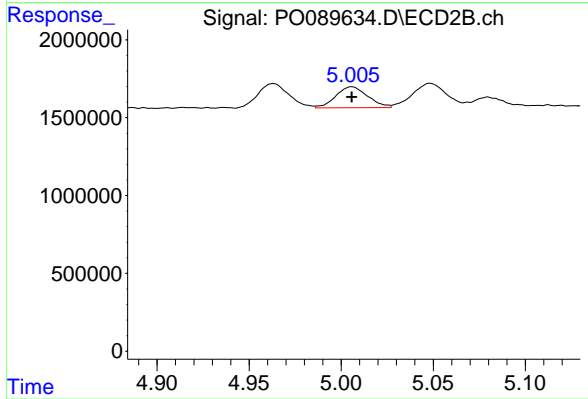
#5 AR-1016-3

R.T.: 4.963 min
 Delta R.T.: 0.000 min
 Response: 1853323
 Conc: 48.13 ng/ml



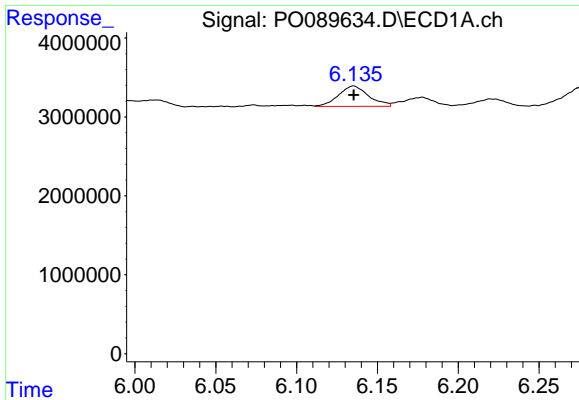
#6 AR-1016-4

R.T.: 5.837 min
 Delta R.T.: 0.000 min
 Response: 3495606
 Conc: 48.84 ng/ml



#6 AR-1016-4

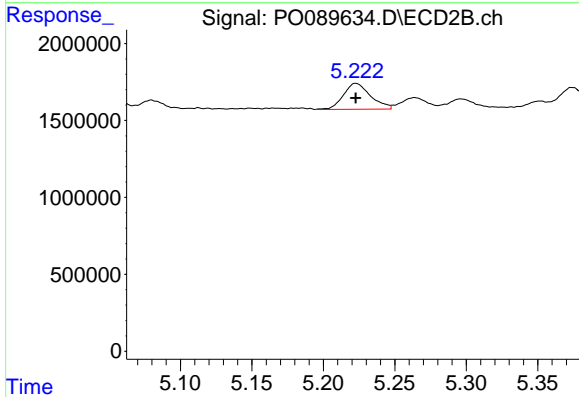
R.T.: 5.006 min
 Delta R.T.: 0.000 min
 Response: 1632562
 Conc: 51.54 ng/ml



#7 AR-1016-5

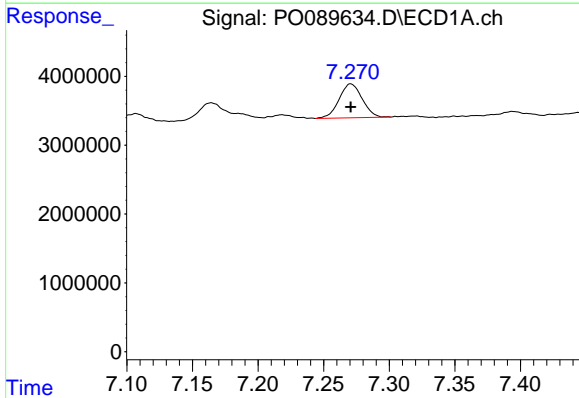
R.T.: 6.135 min
 Delta R.T.: 0.000 min
 Response: 3354815
 Conc: 48.39 ng/ml

Instrument :
 ECD_O
 ClientSampleId :
 AR1660ICC050



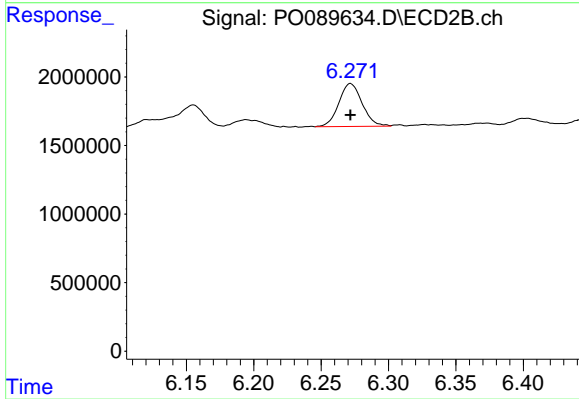
#7 AR-1016-5

R.T.: 5.223 min
 Delta R.T.: 0.000 min
 Response: 2223384
 Conc: 53.30 ng/ml



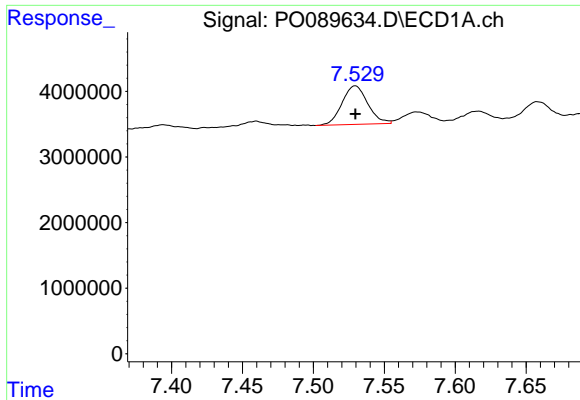
#31 AR-1260-1

R.T.: 7.271 min
 Delta R.T.: 0.000 min
 Response: 6050645
 Conc: 47.76 ng/ml



#31 AR-1260-1

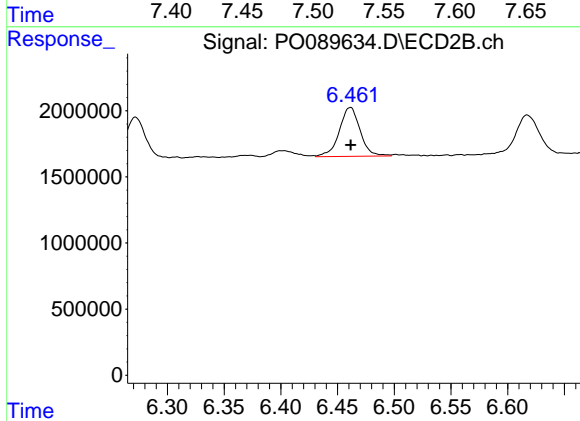
R.T.: 6.272 min
 Delta R.T.: 0.000 min
 Response: 3783756
 Conc: 50.70 ng/ml



#32 AR-1260-2

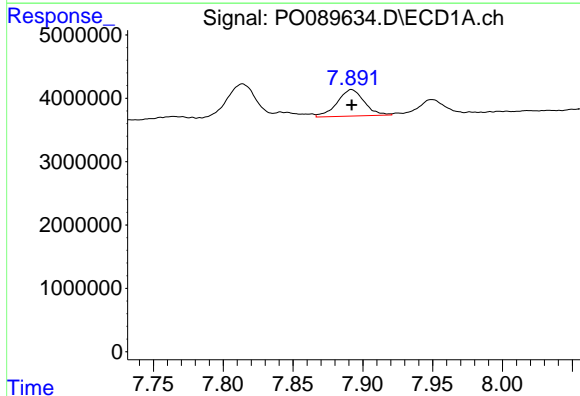
R.T.: 7.530 min
 Delta R.T.: 0.000 min
 Response: 7416619
 Conc: 48.88 ng/ml

Instrument :
 ECD_O
 ClientSampleId :
 AR1660ICC050



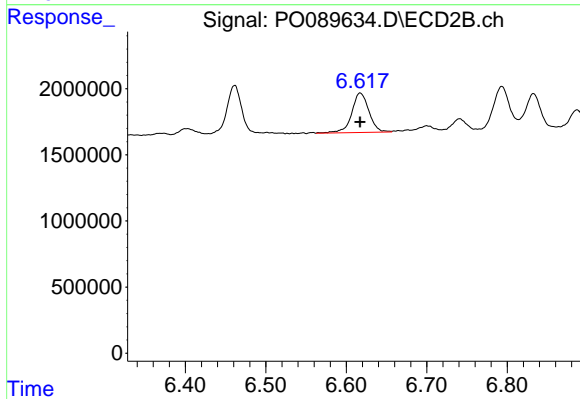
#32 AR-1260-2

R.T.: 6.462 min
 Delta R.T.: 0.000 min
 Response: 4752211
 Conc: 52.67 ng/ml



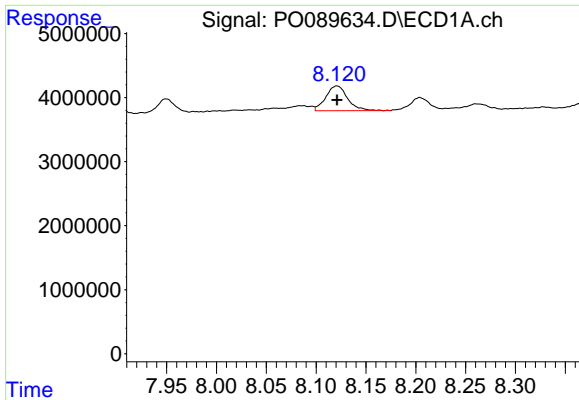
#33 AR-1260-3

R.T.: 7.892 min
 Delta R.T.: 0.000 min
 Response: 5664514
 Conc: 49.92 ng/ml



#33 AR-1260-3

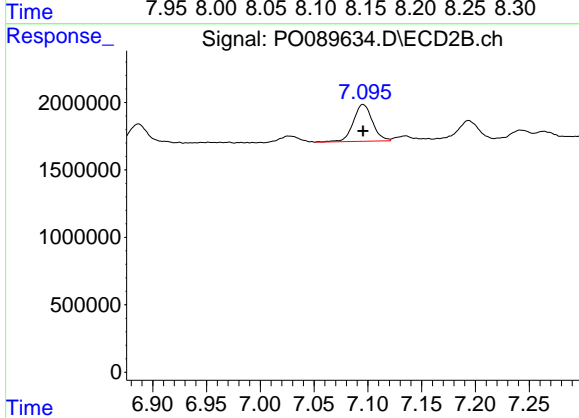
R.T.: 6.617 min
 Delta R.T.: 0.000 min
 Response: 4432707
 Conc: 52.88 ng/ml



#34 AR-1260-4

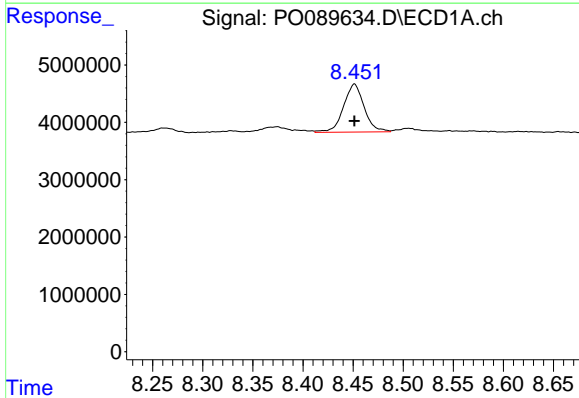
R.T.: 8.121 min
 Delta R.T.: 0.000 min
 Response: 5942708
 Conc: 47.06 ng/ml

Instrument :
 ECD_O
 ClientSampleId :
 AR1660ICC050



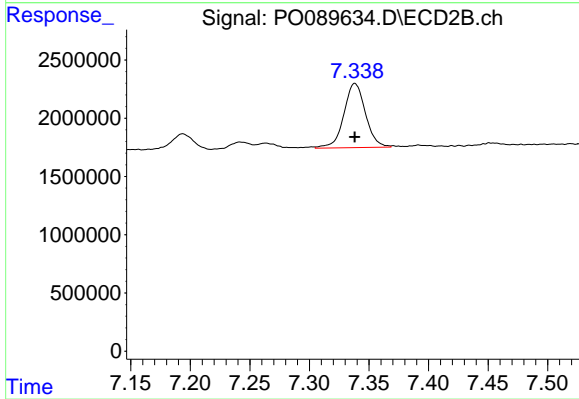
#34 AR-1260-4

R.T.: 7.095 min
 Delta R.T.: 0.000 min
 Response: 3376893
 Conc: 50.84 ng/ml



#35 AR-1260-5

R.T.: 8.451 min
 Delta R.T.: 0.000 min
 Response: 12014672
 Conc: 47.72 ng/ml



#35 AR-1260-5

R.T.: 7.338 min
 Delta R.T.: 0.000 min
 Response: 6931912
 Conc: 46.50 ng/ml