

Data Path : Z:\pestpcbsrv\HPCHEM1\ECD_0\Data\P0091922\
 Data File : P0089652.D
 Signal(s) : Signal #1: ECD1A.ch Signal #2: ECD2B.ch
 Acq On : 20 Sep 2022 00:30
 Operator : YP/AJ
 Sample : AR1262ICC500
 Misc :
 ALS Vial : 25 Sample Multiplier: 1

Instrument :
 ECD_0
 ClientSampleId :
 AR1262ICC500

Integration File signal 1: autoint1.e
 Integration File signal 2: autoint2.e
 Quant Time: Sep 20 05:29:14 2022
 Quant Method : Z:\pestpcbsrv\HPCHEM1\ECD_0\methods\P0091922.M
 Quant Title : GC EXTRACTABLES
 QLast Update : Tue Sep 20 05:29:00 2022
 Response via : Initial Calibration
 Integrator: ChemStation

Volume Inj. : 2 µl
 Signal #1 Phase : ZB-MR1 Signal #2 Phase: ZB-MR2
 Signal #1 Info : 30Mx0.32mmx 0.50µ Signal #2 Info : 30M x 0.32mm x 0.25µm

Compound	RT#1	RT#2	Resp#1	Resp#2	ng/ml	ng/ml

System Monitoring Compounds						
1) SA Tetrachlo...	4.473	3.661	170.0E6	94494279	50.000	50.000
2) SA Decachlor...	10.354	8.765	129.2E6	61484944	50.000	50.000
Target Compounds						
36) L8 AR-1262-1	7.892	6.885	85667185	20863349	500.000	500.000
37) L8 AR-1262-2	8.451	7.338	145.8E6	81418849	500.000	500.000
38) L8 AR-1262-3	8.778	7.625	101.4E6	32688320	500.000	500.000
39) L8 AR-1262-4	8.871	7.689	42905151	58602890	500.000	500.000
40) L8 AR-1262-5	9.557	8.192	52805367	26922617	500.000	500.000

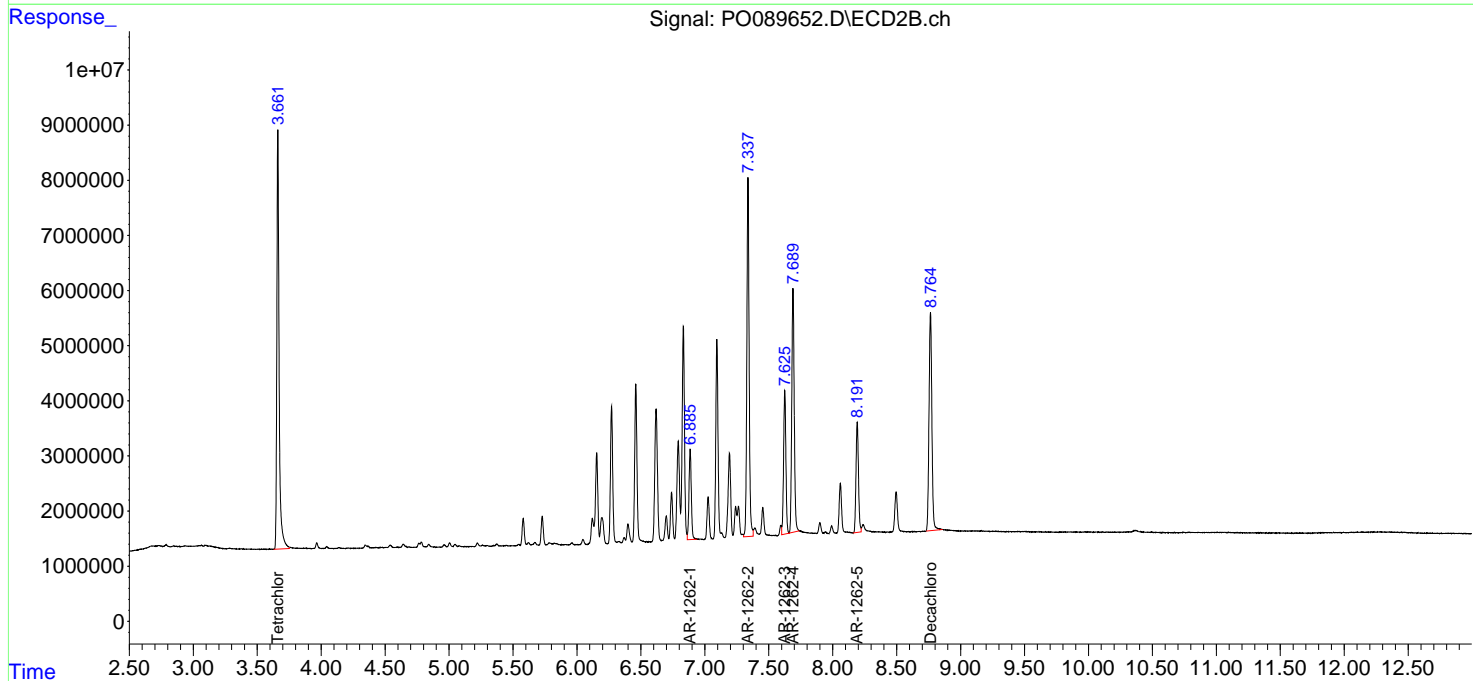
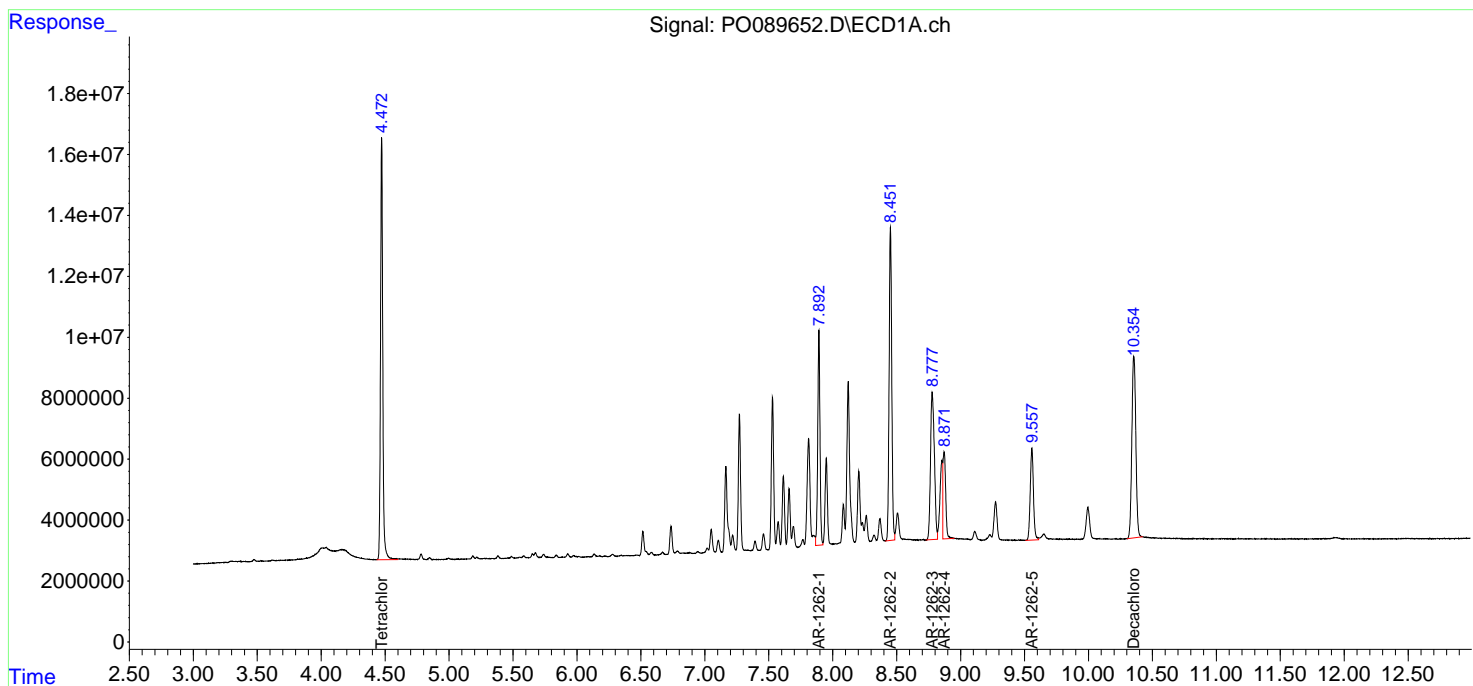
(f)=RT Delta > 1/2 Window (#)=Amounts differ by > 25% (m)=manual int.

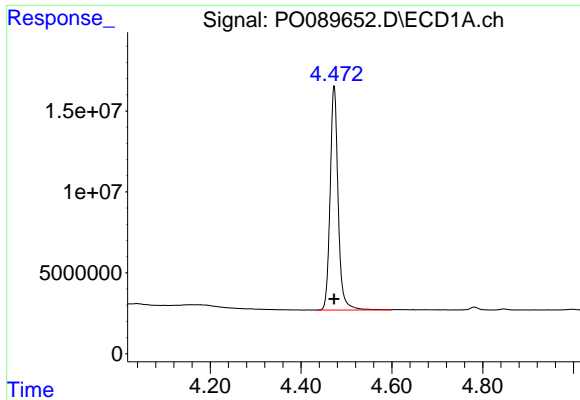
Data Path : Z:\pestpcbsrv\HPCHEM1\ECD_O\Data\PO091922\
 Data File : PO089652.D
 Signal(s) : Signal #1: ECD1A.ch Signal #2: ECD2B.ch
 Acq On : 20 Sep 2022 00:30
 Operator : YP/AJ
 Sample : AR1262ICC500
 Misc :
 ALS Vial : 25 Sample Multiplier: 1

Instrument :
 ECD_O
 ClientSampleId :
 AR1262ICC500

Integration File signal 1: autoint1.e
 Integration File signal 2: autoint2.e
 Quant Time: Sep 20 05:29:14 2022
 Quant Method : Z:\pestpcbsrv\HPCHEM1\ECD_O\methods\PO091922.M
 Quant Title : GC EXTRACTABLES
 QLast Update : Tue Sep 20 05:29:00 2022
 Response via : Initial Calibration
 Integrator: ChemStation

Volume Inj. : 2 µl
 Signal #1 Phase : ZB-MR1 Signal #2 Phase: ZB-MR2
 Signal #1 Info : 30Mx0.32mmx 0.50µm Signal #2 Info : 30M x 0.32mm x 0.25µm

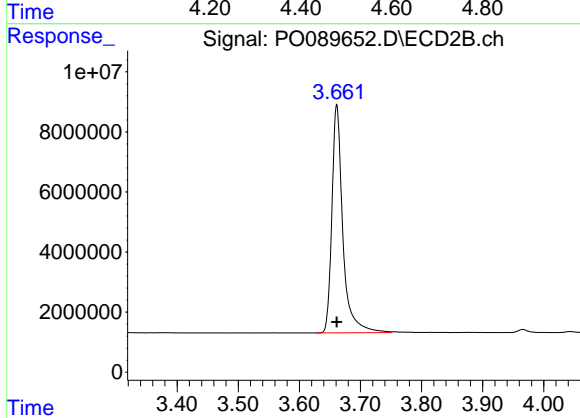




#1 Tetrachloro-m-xylene

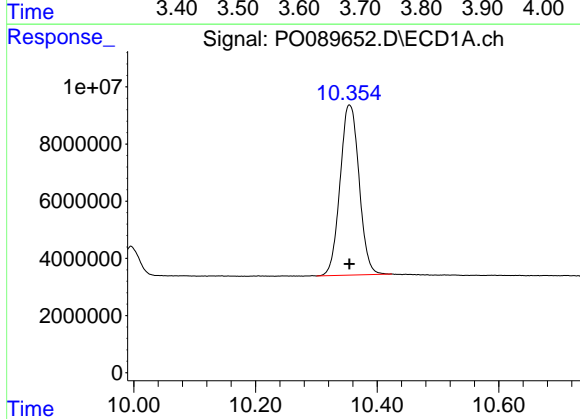
R.T.: 4.473 min
 Delta R.T.: 0.000 min
 Response: 170044455
 Conc: 50.00 ng/ml

Instrument :
 ECD_O
 ClientSampleId :
 AR1262ICC500



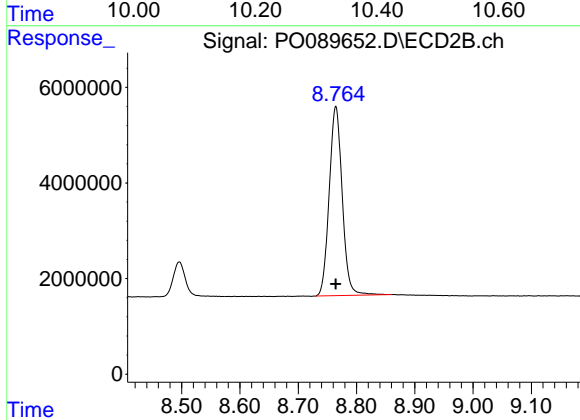
#1 Tetrachloro-m-xylene

R.T.: 3.661 min
 Delta R.T.: 0.000 min
 Response: 94494279
 Conc: 50.00 ng/ml



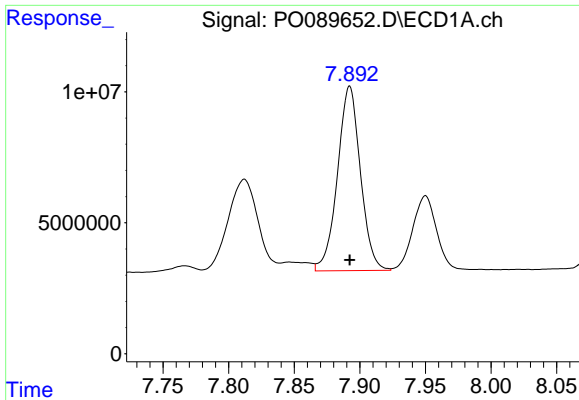
#2 Decachlorobiphenyl

R.T.: 10.354 min
 Delta R.T.: 0.000 min
 Response: 129230600
 Conc: 50.00 ng/ml



#2 Decachlorobiphenyl

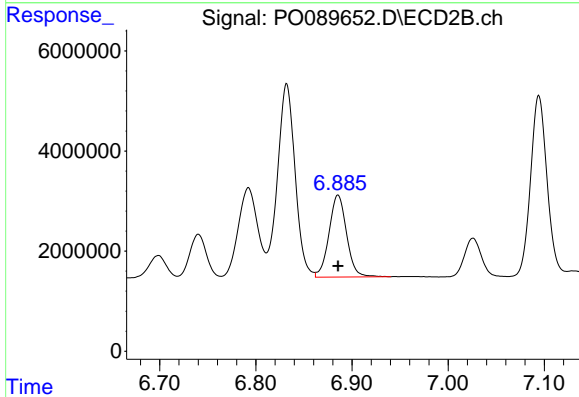
R.T.: 8.765 min
 Delta R.T.: 0.000 min
 Response: 61484944
 Conc: 50.00 ng/ml



#36 AR-1262-1

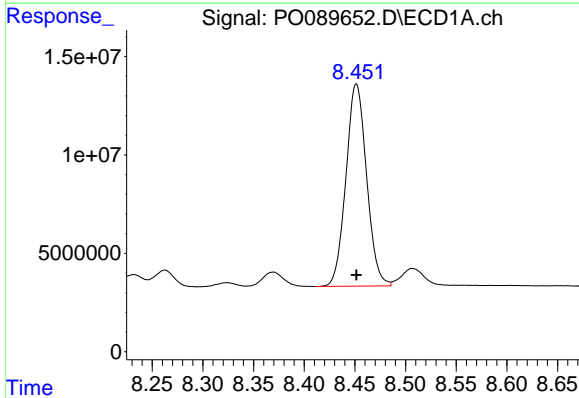
R.T.: 7.892 min
 Delta R.T.: 0.000 min
 Response: 85667185
 Conc: 500.00 ng/ml

Instrument :
 ECD_O
 ClientSampleId :
 AR1262ICC500



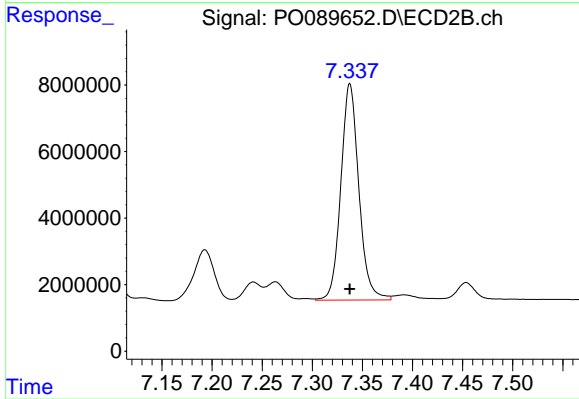
#36 AR-1262-1

R.T.: 6.885 min
 Delta R.T.: 0.000 min
 Response: 20863349
 Conc: 500.00 ng/ml



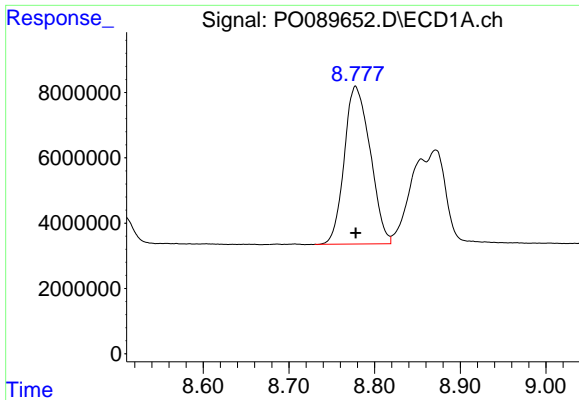
#37 AR-1262-2

R.T.: 8.451 min
 Delta R.T.: 0.000 min
 Response: 145769018
 Conc: 500.00 ng/ml



#37 AR-1262-2

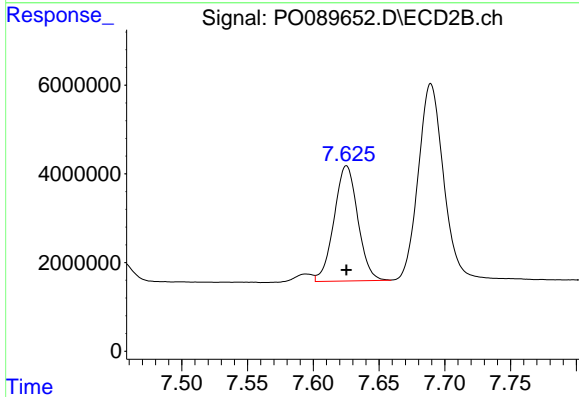
R.T.: 7.338 min
 Delta R.T.: 0.000 min
 Response: 81418849
 Conc: 500.00 ng/ml



#38 AR-1262-3

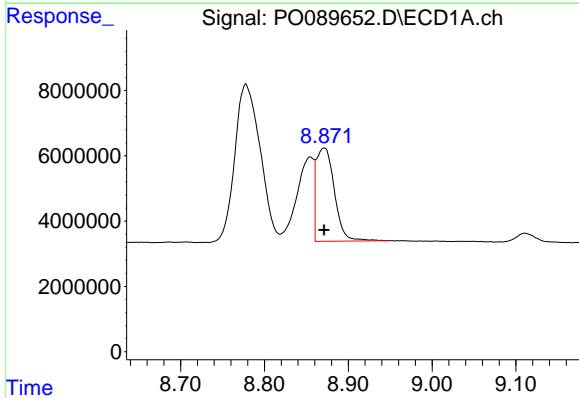
R.T.: 8.778 min
 Delta R.T.: 0.000 min
 Response: 101360717
 Conc: 500.00 ng/ml

Instrument :
 ECD_O
 ClientSampleId :
 AR1262ICC500



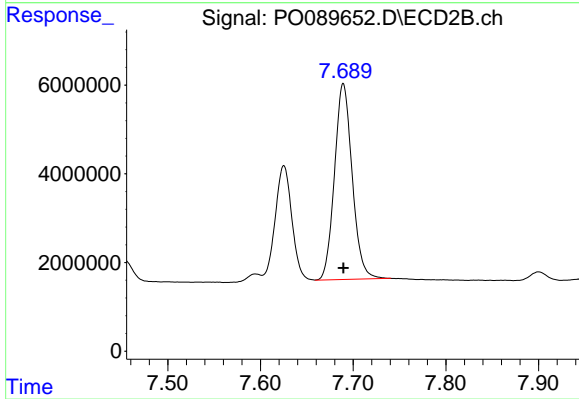
#38 AR-1262-3

R.T.: 7.625 min
 Delta R.T.: 0.000 min
 Response: 32688320
 Conc: 500.00 ng/ml



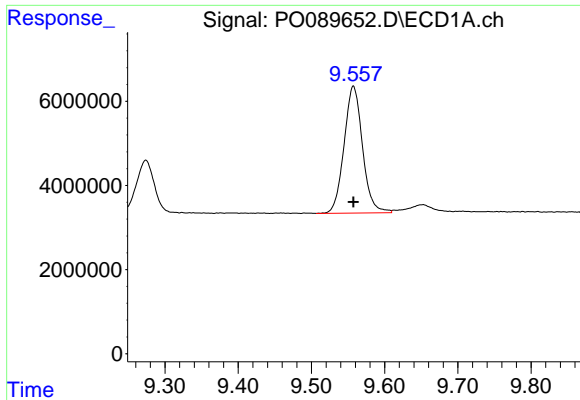
#39 AR-1262-4

R.T.: 8.871 min
 Delta R.T.: 0.000 min
 Response: 42905151
 Conc: 500.00 ng/ml



#39 AR-1262-4

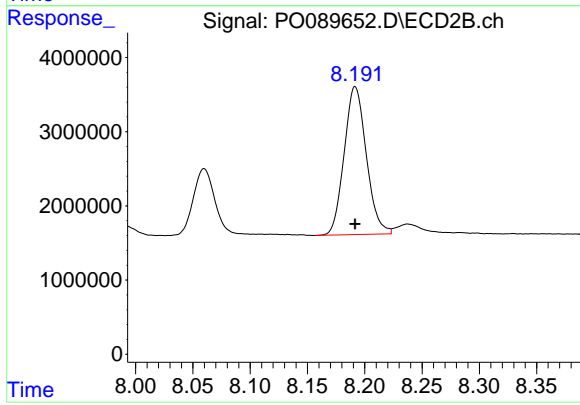
R.T.: 7.689 min
 Delta R.T.: 0.000 min
 Response: 58602890
 Conc: 500.00 ng/ml



#40 AR-1262-5

R.T.: 9.557 min
Delta R.T.: 0.000 min
Response: 52805367
Conc: 500.00 ng/ml

Instrument :
ECD_O
ClientSampleId :
AR1262ICC500



#40 AR-1262-5

R.T.: 8.192 min
Delta R.T.: 0.000 min
Response: 26922617
Conc: 500.00 ng/ml