

Data Path : Z:\pestpcbsrv\HPCHEM1\ECD_O\Data\P0091924\
 Data File : P0106698.D
 Signal(s) : Signal #1: ECD1A.ch Signal #2: ECD2B.ch
 Acq On : 19 Sep 2024 17:33
 Operator : YP/AJ
 Sample : P4103-04
 Misc :
 ALS Vial : 12 Sample Multiplier: 1

Instrument :
 ECD_O
ClientSampleId :
 WC-14-5-7.5A

Manual Integrations
APPROVED
 Reviewed By :Yogesh Patel 09/20/2024
 Supervised By :Ankita Jodhani 09/20/2024

Integration File signal 1: autoint1.e
 Integration File signal 2: autoint2.e
 Quant Time: Sep 20 05:20:05 2024
 Quant Method : Z:\pestpcbsrv\HPCHEM1\ECD_O\methods\P0090924.M
 Quant Title : GC EXTRACTABLES
 QLast Update : Tue Sep 10 09:57:51 2024
 Response via : Initial Calibration
 Integrator: ChemStation

Volume Inj. : 2 µl
 Signal #1 Phase : ZB-MR1 Signal #2 Phase: ZB-MR2
 Signal #1 Info : 30Mx0.32mmx 0.50µ Signal #2 Info : 30M x 0.32mm x 0.25µm

Compound	RT#1	RT#2	Resp#1	Resp#2	ng/ml	ng/ml

System Monitoring Compounds						
1) SA Tetrachlo...	4.450	3.713	85769230	35194101	11.434m	13.175m
2) SA Decachlor...	10.198	8.737	84479977	34152700	17.091	17.074m

Target Compounds

(f)=RT Delta > 1/2 Window (#)=Amounts differ by > 25% (m)=manual int.

Data Path : Z:\pestpcbsrv\HPCHEM1\ECD_O\Data\PO091924\
 Data File : PO106698.D
 Signal(s) : Signal #1: ECD1A.ch Signal #2: ECD2B.ch
 Acq On : 19 Sep 2024 17:33
 Operator : YP/AJ
 Sample : P4103-04
 Misc :
 ALS Vial : 12 Sample Multiplier: 1

Instrument :

ECD_O

ClientSampleId :

WC-14-5-7.5A

Manual Integrations

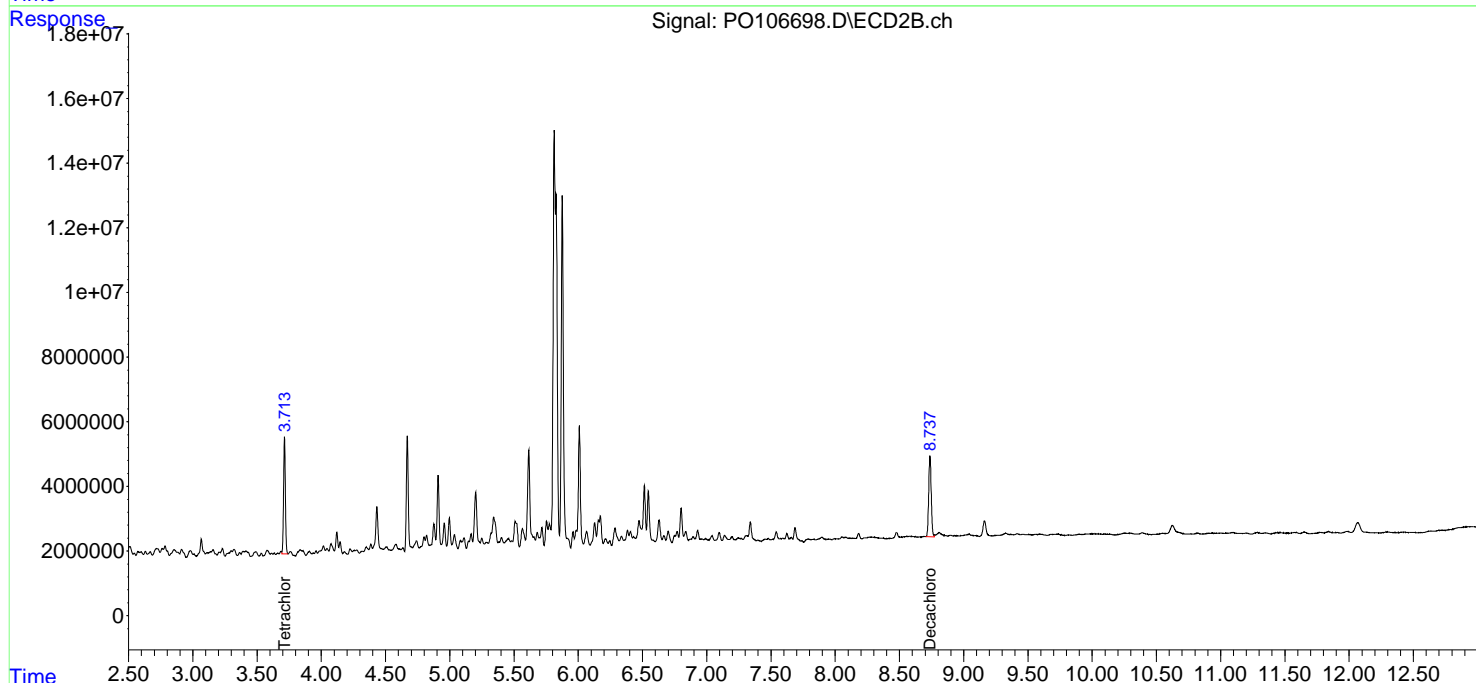
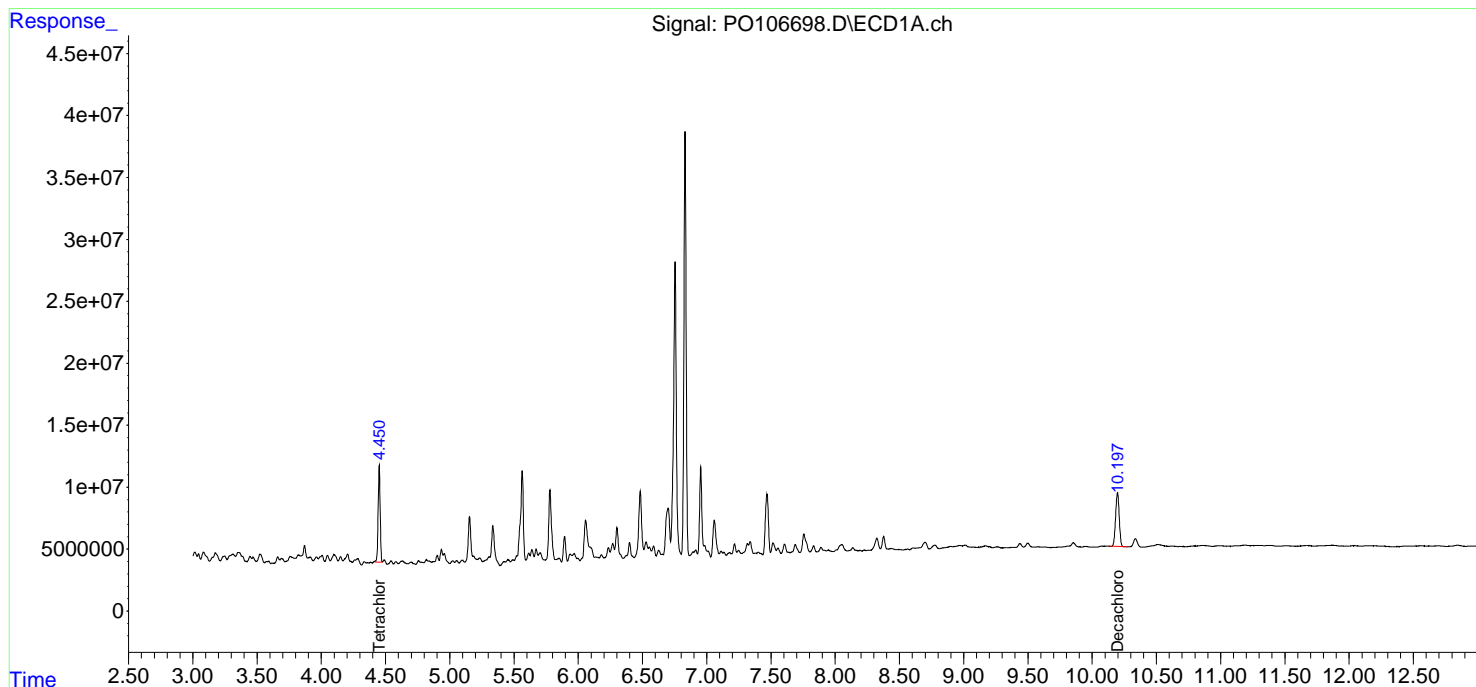
APPROVED

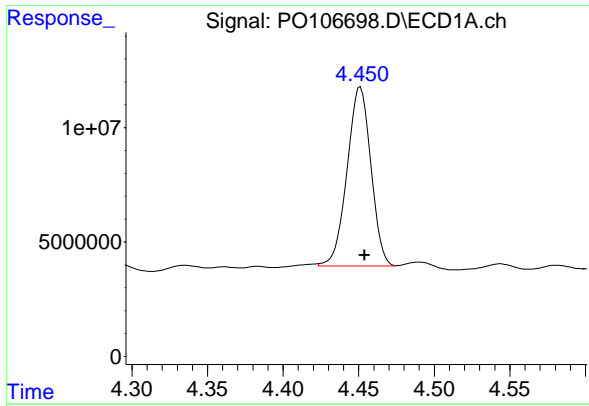
Reviewed By :Yogesh Patel 09/20/2024

Supervised By :Ankita Jodhani 09/20/2024

Integration File signal 1: autoint1.e
 Integration File signal 2: autoint2.e
 Quant Time: Sep 20 05:20:05 2024
 Quant Method : Z:\pestpcbsrv\HPCHEM1\ECD_O\methods\PO090924.M
 Quant Title : GC EXTRACTABLES
 QLast Update : Tue Sep 10 09:57:51 2024
 Response via : Initial Calibration
 Integrator: ChemStation

Volume Inj. : 2 µl
 Signal #1 Phase : ZB-MR1 Signal #2 Phase: ZB-MR2
 Signal #1 Info : 30Mx0.32mmx 0.50µm Signal #2 Info : 30M x 0.32mm x 0.25µm





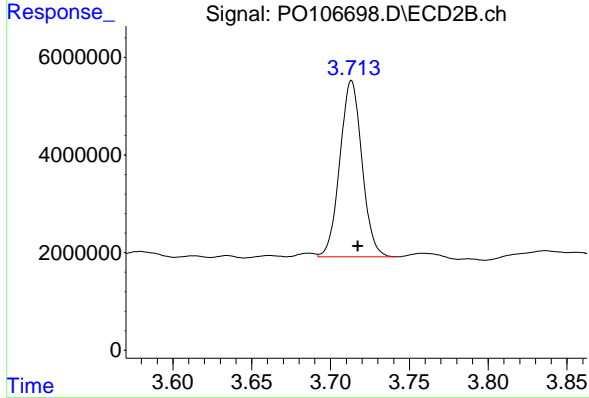
#1 Tetrachloro-m-xylene

R.T.: 4.450 min
 Delta R.T.: -0.004 min
 Response: 85769230
 Conc: 11.43 ng/ml

Instrument :
 ECD_O
 Client Sample Id :
 WC-14-5-7.5A

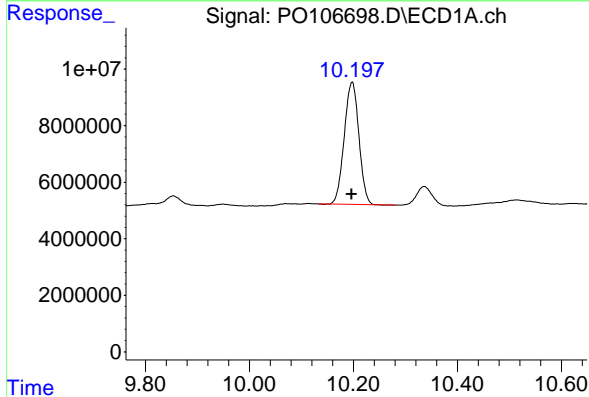
Manual Integrations
 APPROVED

Reviewed By :Yogesh Patel 09/20/2024
 Supervised By :Ankita Jodhani 09/20/2024



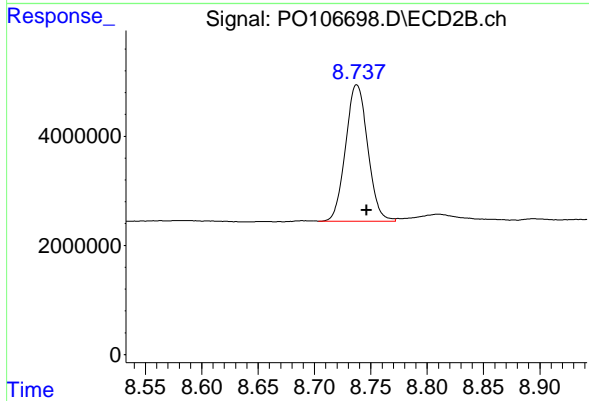
#1 Tetrachloro-m-xylene

R.T.: 3.713 min
 Delta R.T.: -0.005 min
 Response: 35194101
 Conc: 13.18 ng/ml m



#2 Decachlorobiphenyl

R.T.: 10.198 min
 Delta R.T.: 0.000 min
 Response: 84479977
 Conc: 17.09 ng/ml



#2 Decachlorobiphenyl

R.T.: 8.737 min
 Delta R.T.: -0.009 min
 Response: 34152700
 Conc: 17.07 ng/ml m