

Data Path : Z:\pestpcbsrv\HPCHEM1\ECD_0\Data\P0092019\
 Data File : P0061213.D
 Signal(s) : Signal #1: ECD1A.CH Signal #2: ECD2B.CH
 Acq On : 20 Sep 2019 15:26
 Operator : SM/AJ
 Sample : AR1660CCC500
 Misc :
 ALS Vial : 3 Sample Multiplier: 1

Instrument :
 ECD_O
 ClientSampled :

Integration File signal 1: autoint1.e
 Integration File signal 2: autoint2.e
 Quant Time: Sep 21 10:49:06 2019
 Quant Method : Z:\pestpcbsrv\HPCHEM1\ECD_0\methods\P0091319.M
 Quant Title : GC EXTRACTABLES
 QLast Update : Sat Sep 14 00:06:36 2019
 Response via : Initial Calibration
 Integrator: ChemStation 6890 Scale Mode: Small noise peaks clipped

Volume Inj. : 2 µl
 Signal #1 Phase : ZB-MR1 Signal #2 Phase: ZB-MR2
 Signal #1 Info : 30Mx0.32mmx 0.50µ Signal #2 Info : 30M x 0.32mm x 0.25µm

Compound	RT#1	RT#2	Resp#1	Resp#2	ng/ml	ng/ml
System Monitoring Compounds						
1) SA Tetrachlo...	4.368	3.527	1513945	1269964	41.150	45.482
2) SA Decachlor...	10.028	8.403	2215280	1502966	48.215	42.878
Target Compounds						
3) L1 AR-1016-1	5.530	4.581	740342	599036	463.251	484.562
4) L1 AR-1016-2	5.553	4.599	1066117	820200	465.685	482.094
5) L1 AR-1016-3	5.614	4.769	663564	460239	462.226	474.733
6) L1 AR-1016-4	5.712	4.812	555984	387883	471.344	473.881
7) L1 AR-1016-5	6.004	5.018	673914	484299	537.603	462.396
8) L2 AR-1221-1	4.572	3.735	51297	45699	116.871	129.099
9) L2 AR-1221-2	4.663	3.818	81916	74911	239.830	266.549
10) L2 AR-1221-3	4.739	3.893	302214	261321	285.321	314.819
11) L3 AR-1232-1	4.739	3.893	302214	261321	259.017	286.742
12) L3 AR-1232-2	5.264	4.599	464736	820200	716.755	812.349
13) L3 AR-1232-3	5.553	4.769	1066117	460239	795.994	820.097
14) L3 AR-1232-4	5.712	4.852	555984	470091	809.125	900.177
15) L3 AR-1232-5	5.802	5.018	514434	484299	939.446	855.754
16) L4 AR-1242-1	5.530	4.581	740342	599036	620.356	658.005
17) L4 AR-1242-2	5.553	4.599	1066117	820200	623.789	655.187
18) L4 AR-1242-3	5.614	4.769	663564	460239	612.777	644.091
19) L4 AR-1242-4	5.712	4.852	555984	470091	629.794	645.517
20) L4 AR-1242-5	6.446	5.361	101002	379021	90.125	382.887 #
21) L5 AR-1248-1	5.530	4.581	740342	599036	804.196	844.573
22) L5 AR-1248-2	5.802	4.812	514434	387883	384.694	401.453
23) L5 AR-1248-3	6.004	4.852	673914	470091	445.285	466.764
24) L5 AR-1248-4	6.408	5.018	123561	484299	67.821	403.271 #
25) L5 AR-1248-5	6.446	5.399	101002	69223	57.729	54.759
26) L6 AR-1254-1	6.381	5.361	450997	379021	234.084	183.907
27) L6 AR-1254-2	6.597	5.505	518927	365862	164.900	193.882
28) L6 AR-1254-3	6.964	5.915	309439	732832	87.859	230.485 #
29) L6 AR-1254-4	7.249	6.123	227468	118901	84.028	57.110 #
30) L6 AR-1254-5	7.665	6.534	1809676	1336063	613.695	422.150 #
31) L7 AR-1260-1	7.127	6.027	1229676	952280	505.080	452.735
32) L7 AR-1260-2	7.383	6.213	1570207	1157472	519.360	448.720
33) L7 AR-1260-3	7.740	6.363	1191454	1109316	499.261	460.666
34) L7 AR-1260-4	7.966	6.827	1420029	926473	507.572	432.882
35) L7 AR-1260-5	8.279	7.067	2725048	2080114	500.437	430.444
36) L8 AR-1262-1	7.740	6.572	1191454	1009075	337.302	337.833
37) L8 AR-1262-2	8.279	7.067	2725048	2080114	437.095	400.063
38) L8 AR-1262-3	8.596	7.346	1707569	494348	400.754	232.917 #
39) L8 AR-1262-4	8.669	7.408	445215	1508477	136.552	394.943 #
40) L8 AR-1262-5	9.306	7.897	704019	544614	346.231	325.380
41) L9 AR-1268-1	8.596	7.346	1707569	494348	231.363	84.330 #

Data Path : Z:\pestpcbsrv\HPCHEM1\ECD_0\Data\P0092019\
 Data File : P0061213.D
 Signal(s) : Signal #1: ECD1A.CH Signal #2: ECD2B.CH
 Acq On : 20 Sep 2019 15:26
 Operator : SM/AJ
 Sample : AR1660CCC500
 Misc :
 ALS Vial : 3 Sample Multiplier: 1

Instrument :
 ECD_0
 ClientSampleId :

Integration File signal 1: autoint1.e
 Integration File signal 2: autoint2.e
 Quant Time: Sep 21 10:49:06 2019
 Quant Method : Z:\pestpcbsrv\HPCHEM1\ECD_0\methods\P0091319.M
 Quant Title : GC EXTRACTABLES
 QLast Update : Sat Sep 14 00:06:36 2019
 Response via : Initial Calibration
 Integrator: ChemStation 6890 Scale Mode: Small noise peaks clipped

Volume Inj. : 2 µl
 Signal #1 Phase : ZB-MR1 Signal #2 Phase: ZB-MR2
 Signal #1 Info : 30Mx0.32mmx 0.50µ Signal #2 Info : 30M x 0.32mm x 0.25µm

	Compound	RT#1	RT#2	Resp#1	Resp#2	ng/ml	ng/ml
42)	L9 AR-1268-2	8.669	7.408	445215	1508477	65.908	283.018 #
43)	L9 AR-1268-3	8.892	7.612	35931	47969	6.398	10.822 #
44)	L9 AR-1268-4	9.306	7.897	704019	544614	305.202	285.010
45)	L9 AR-1268-5	9.704	8.168	194228	146767	12.245	12.197

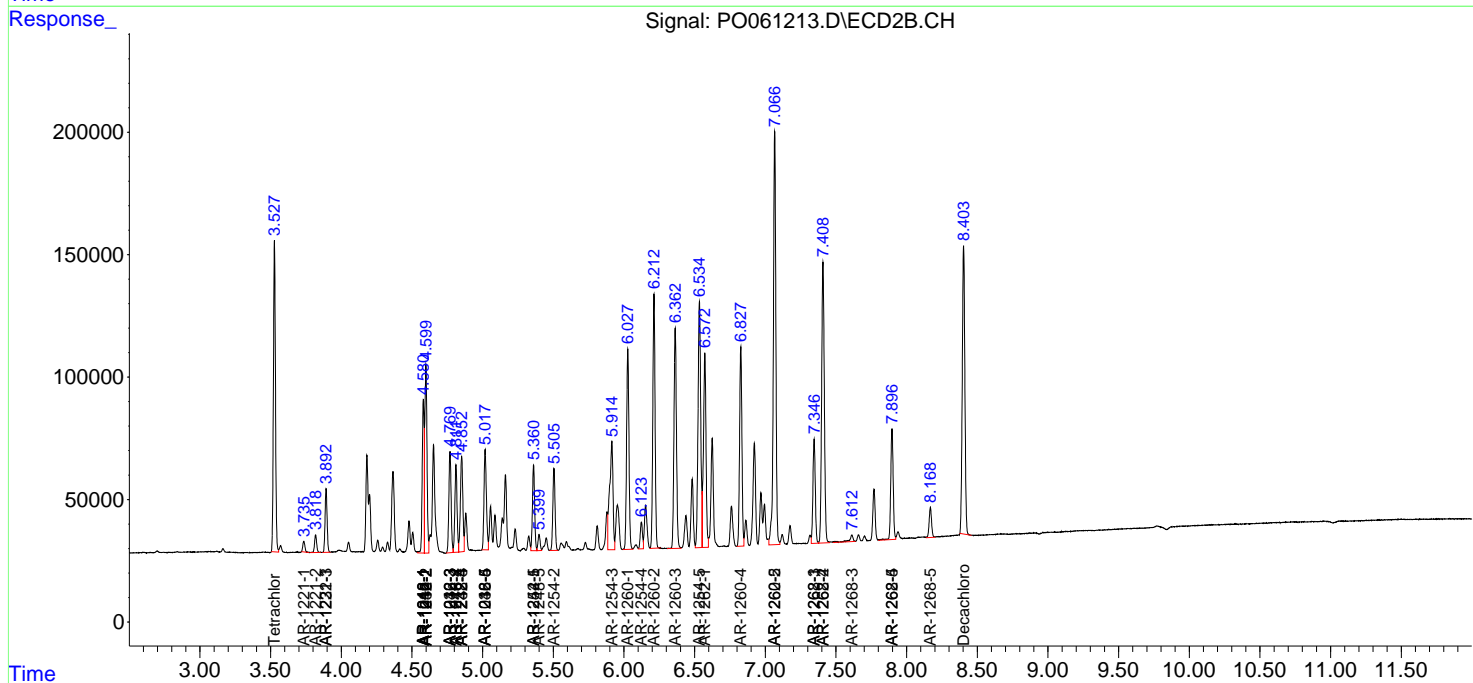
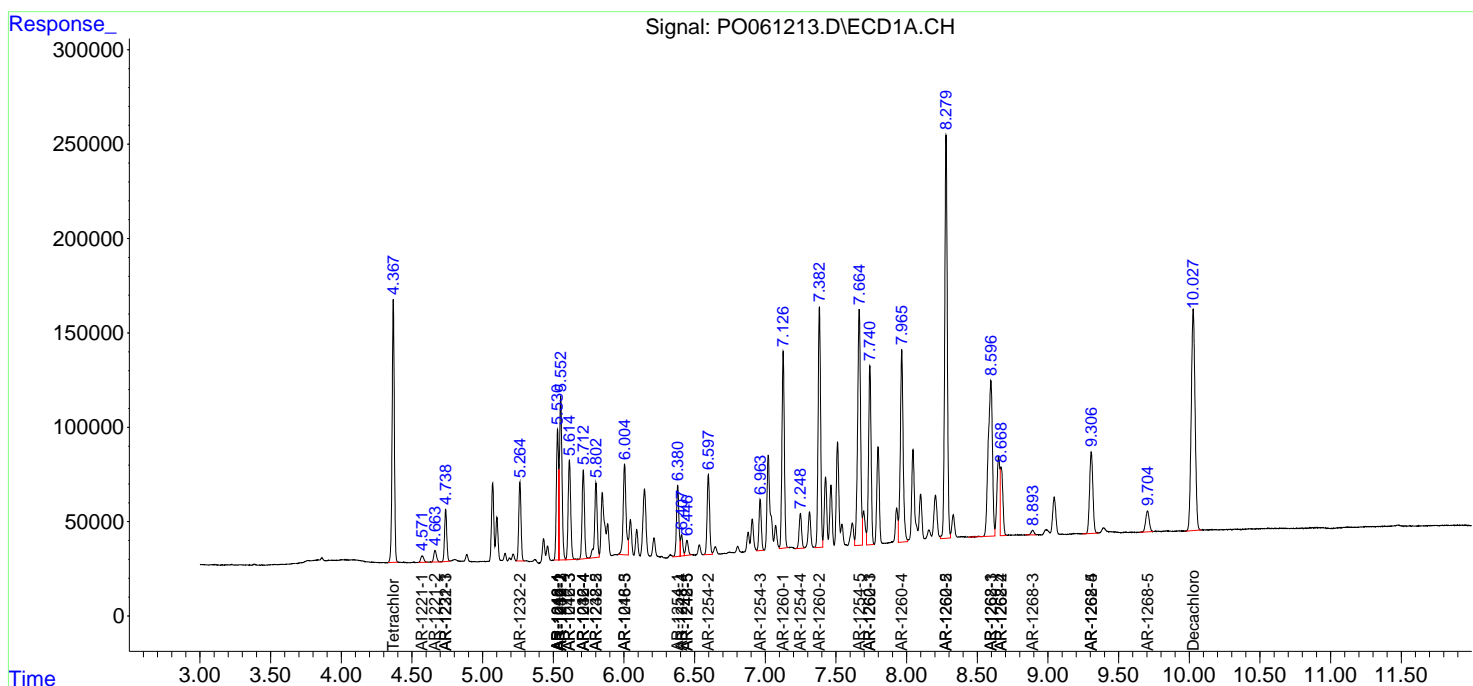
(f)=RT Delta > 1/2 Window (#)=Amounts differ by > 25% (m)=manual int.

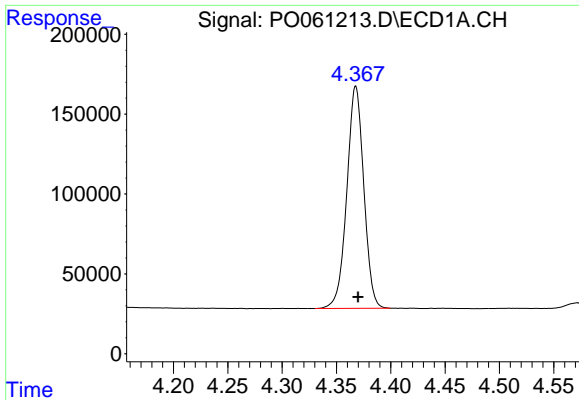
Data Path : Z:\pestpcbsrv\HPCHEM1\ECD_O\Data\P0092019\
 Data File : P0061213.D
 Signal(s) : Signal #1: ECD1A.CH Signal #2: ECD2B.CH
 Acq On : 20 Sep 2019 15:26
 Operator : SM/AJ
 Sample : AR1660CCC500
 Misc :
 ALS Vial : 3 Sample Multiplier: 1

Instrument :
 ECD_O
 ClientSampled :

Integration File signal 1: autoint1.e
 Integration File signal 2: autoint2.e
 Quant Time: Sep 21 10:49:06 2019
 Quant Method : Z:\pestpcbsrv\HPCHEM1\ECD_O\methods\P0091319.M
 Quant Title : GC EXTRACTABLES
 QLast Update : Sat Sep 14 00:06:36 2019
 Response via : Initial Calibration
 Integrator: ChemStation 6890 Scale Mode: Small noise peaks clipped

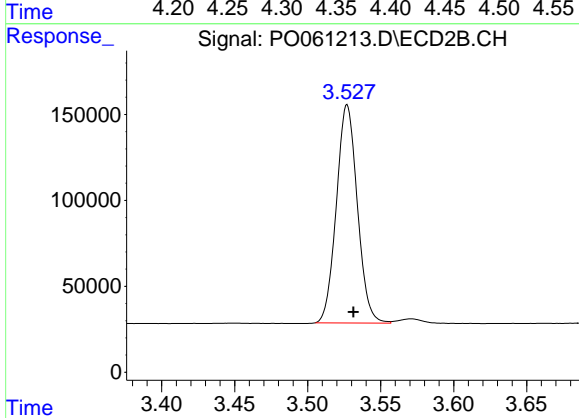
Volume Inj. : 2 µl
 Signal #1 Phase : ZB-MR1 Signal #2 Phase: ZB-MR2
 Signal #1 Info : 30Mx0.32mmx 0.50µ Signal #2 Info : 30M x 0.32mm x 0.25µm



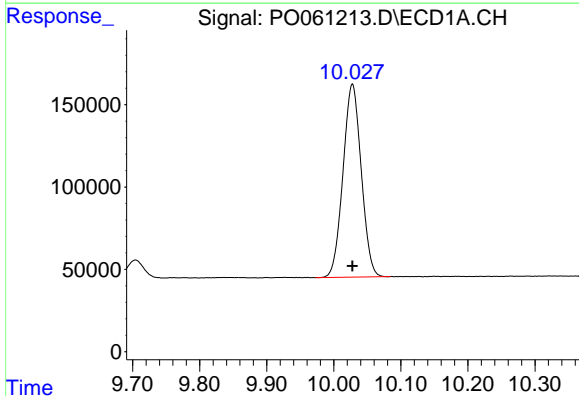


#1 Tetrachloro-m-xylene
 R.T.: 4.368 min
 Delta R.T.: -0.002 min
 Response: 1513945
 Conc: 41.15 ng/ml

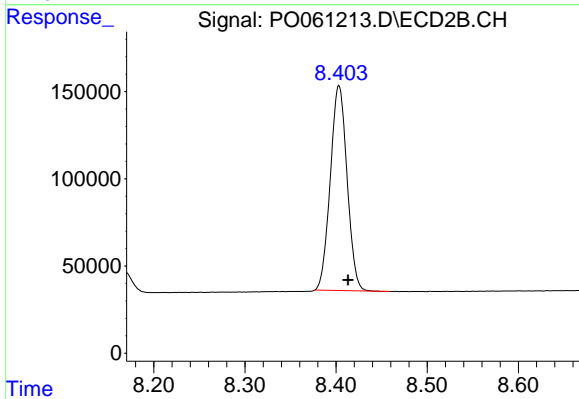
Instrument :
 ECD_O
 ClientSampleId :



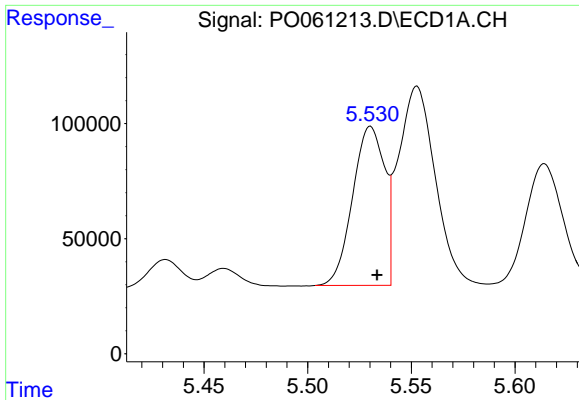
#1 Tetrachloro-m-xylene
 R.T.: 3.527 min
 Delta R.T.: -0.004 min
 Response: 1269964
 Conc: 45.48 ng/ml



#2 Decachlorobiphenyl
 R.T.: 10.028 min
 Delta R.T.: 0.000 min
 Response: 2215280
 Conc: 48.21 ng/ml

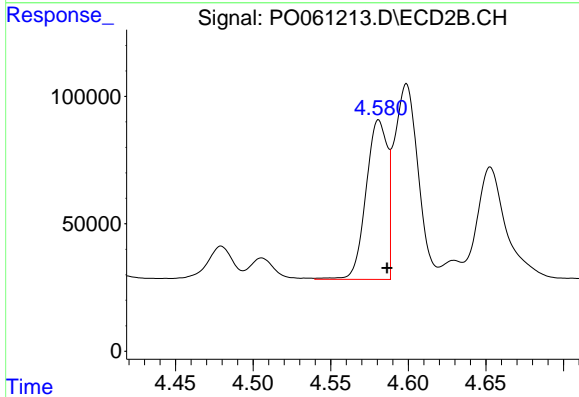


#2 Decachlorobiphenyl
 R.T.: 8.403 min
 Delta R.T.: -0.010 min
 Response: 1502966
 Conc: 42.88 ng/ml

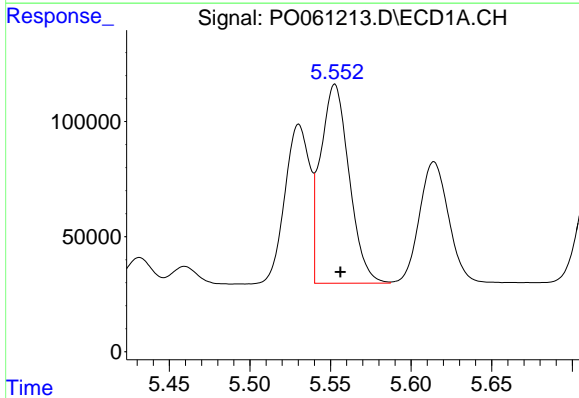


#3 AR-1016-1
 R.T.: 5.530 min
 Delta R.T.: -0.003 min
 Response: 740342
 Conc: 463.25 ng/ml

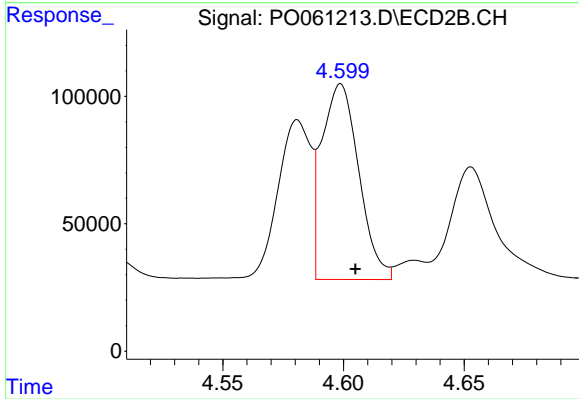
Instrument :
 ECD_O
 ClientSampled :



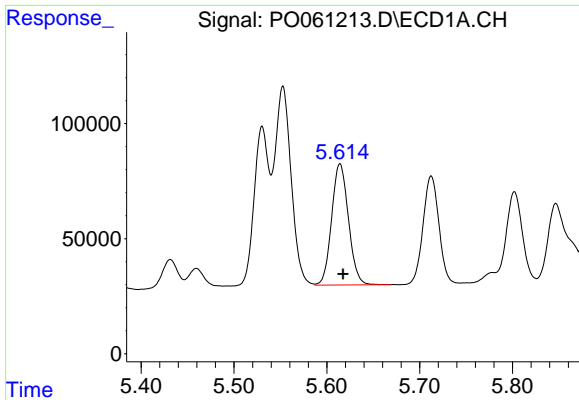
#3 AR-1016-1
 R.T.: 4.581 min
 Delta R.T.: -0.005 min
 Response: 599036
 Conc: 484.56 ng/ml



#4 AR-1016-2
 R.T.: 5.553 min
 Delta R.T.: -0.003 min
 Response: 1066117
 Conc: 465.68 ng/ml



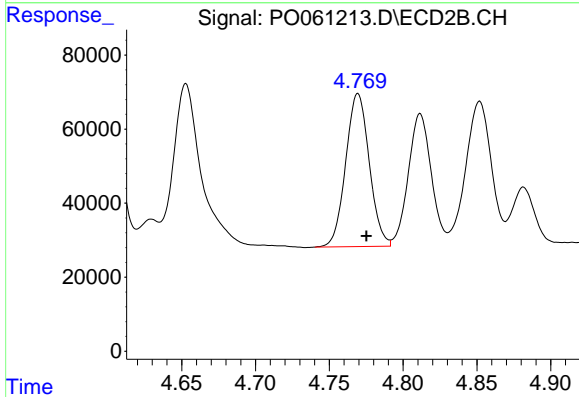
#4 AR-1016-2
 R.T.: 4.599 min
 Delta R.T.: -0.006 min
 Response: 820200
 Conc: 482.09 ng/ml



#5 AR-1016-3

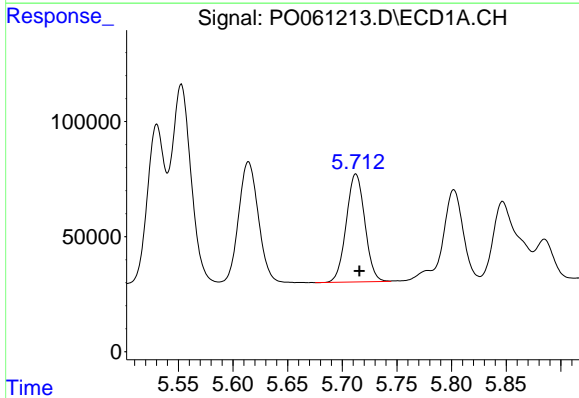
R.T.: 5.614 min
 Delta R.T.: -0.003 min
 Response: 663564
 Conc: 462.23 ng/ml

Instrument :
 ECD_O
 ClientSampled :



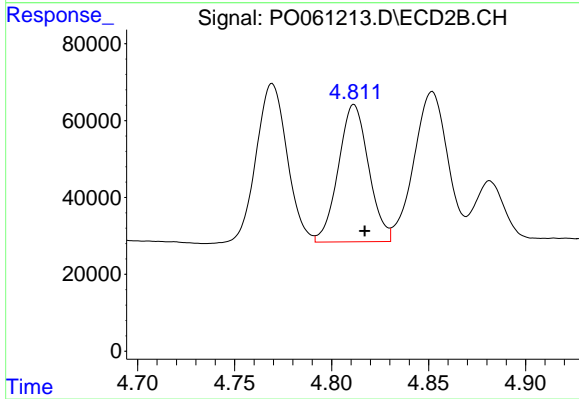
#5 AR-1016-3

R.T.: 4.769 min
 Delta R.T.: -0.006 min
 Response: 460239
 Conc: 474.73 ng/ml



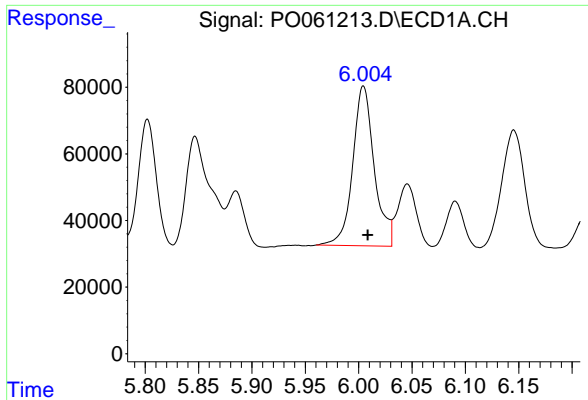
#6 AR-1016-4

R.T.: 5.712 min
 Delta R.T.: -0.003 min
 Response: 555984
 Conc: 471.34 ng/ml



#6 AR-1016-4

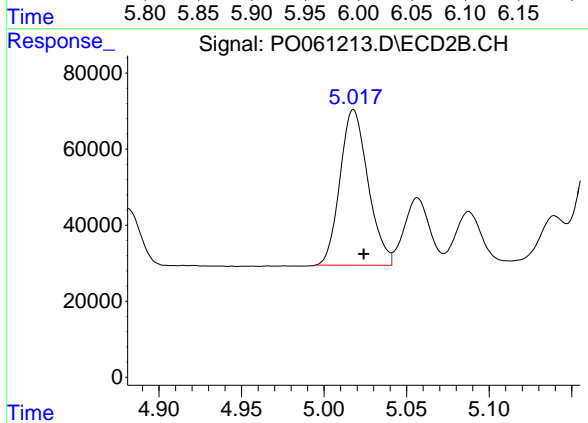
R.T.: 4.812 min
 Delta R.T.: -0.006 min
 Response: 387883
 Conc: 473.88 ng/ml



#7 AR-1016-5

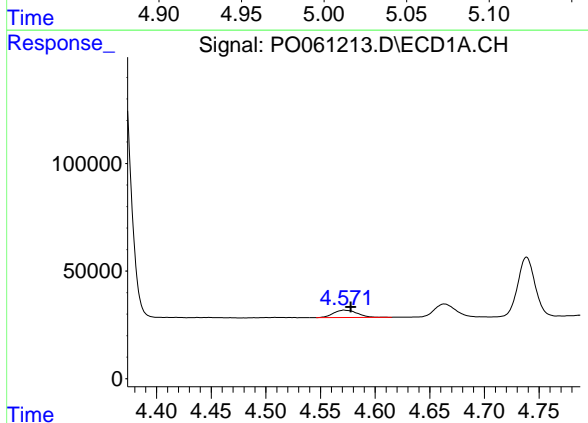
R.T.: 6.004 min
 Delta R.T.: -0.004 min
 Response: 673914
 Conc: 537.60 ng/ml

Instrument :
 ECD_O
 ClientSampled :



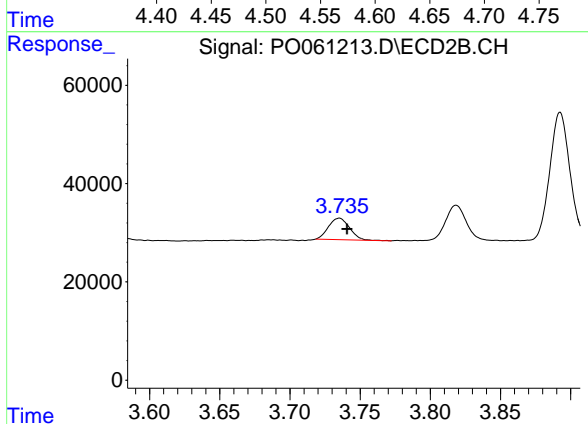
#7 AR-1016-5

R.T.: 5.018 min
 Delta R.T.: -0.006 min
 Response: 484299
 Conc: 462.40 ng/ml



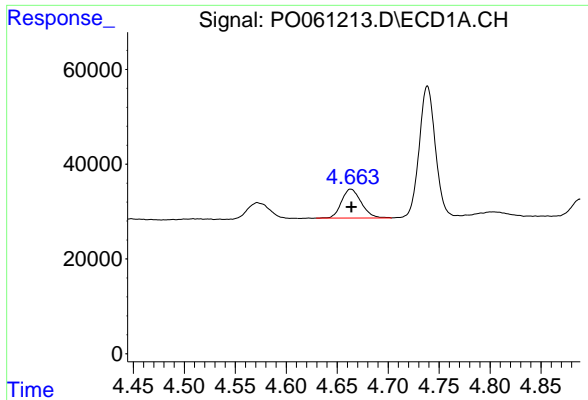
#8 AR-1221-1

R.T.: 4.572 min
 Delta R.T.: -0.006 min
 Response: 51297
 Conc: 116.87 ng/ml



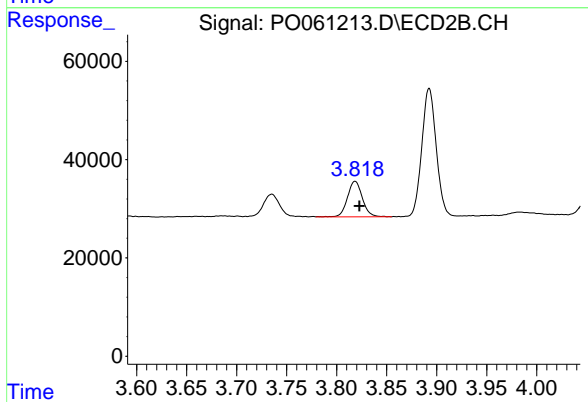
#8 AR-1221-1

R.T.: 3.735 min
 Delta R.T.: -0.005 min
 Response: 45699
 Conc: 129.10 ng/ml

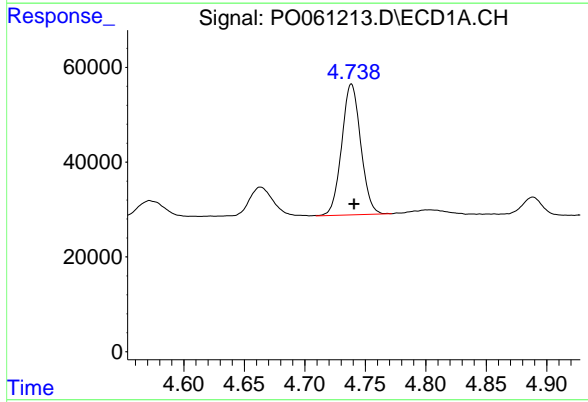


#9 AR-1221-2
 R.T.: 4.663 min
 Delta R.T.: 0.000 min
 Response: 81916
 Conc: 239.83 ng/ml

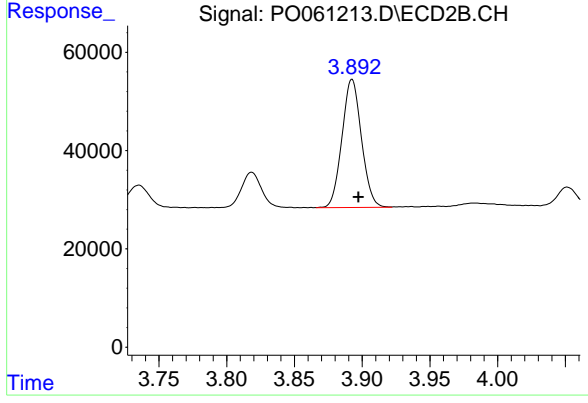
Instrument :
 ECD_O
 ClientSampleId :



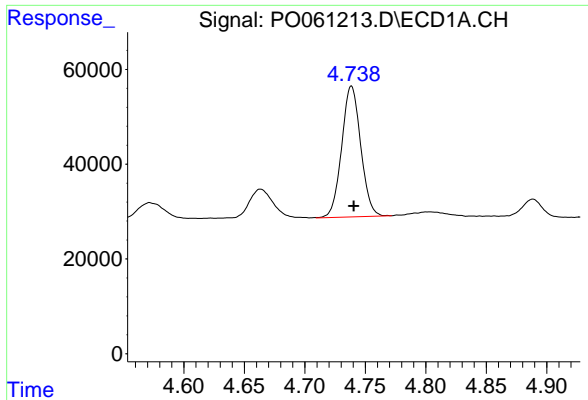
#9 AR-1221-2
 R.T.: 3.818 min
 Delta R.T.: -0.004 min
 Response: 74911
 Conc: 266.55 ng/ml



#10 AR-1221-3
 R.T.: 4.739 min
 Delta R.T.: -0.002 min
 Response: 302214
 Conc: 285.32 ng/ml

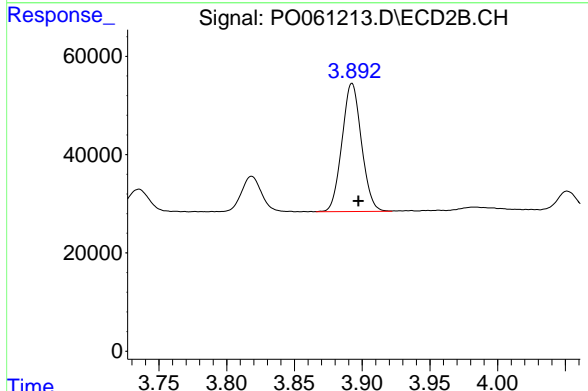


#10 AR-1221-3
 R.T.: 3.893 min
 Delta R.T.: -0.005 min
 Response: 261321
 Conc: 314.82 ng/ml

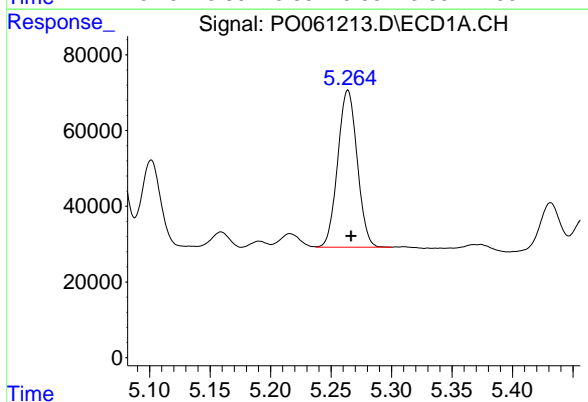


#11 AR-1232-1
 R.T.: 4.739 min
 Delta R.T.: -0.002 min
 Response: 302214
 Conc: 259.02 ng/ml

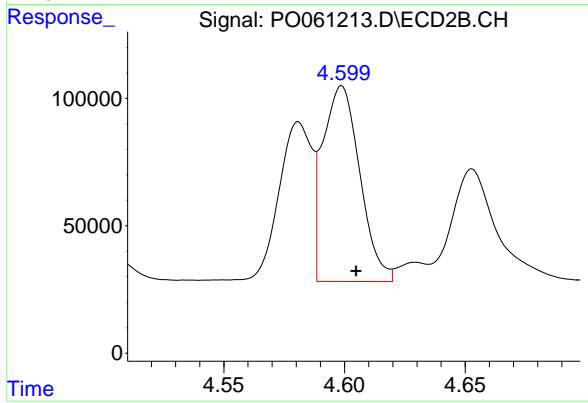
Instrument :
 ECD_O
 ClientSampleId :



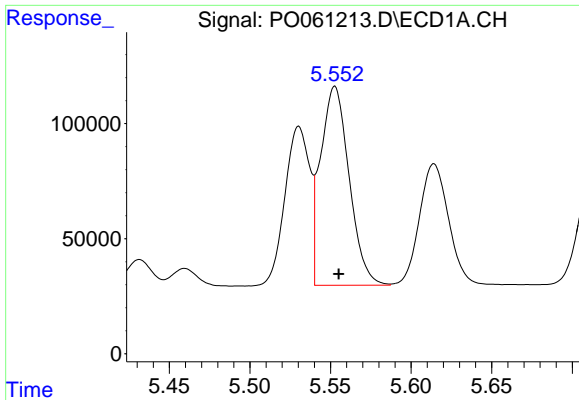
#11 AR-1232-1
 R.T.: 3.893 min
 Delta R.T.: -0.005 min
 Response: 261321
 Conc: 286.74 ng/ml



#12 AR-1232-2
 R.T.: 5.264 min
 Delta R.T.: -0.003 min
 Response: 464736
 Conc: 716.75 ng/ml



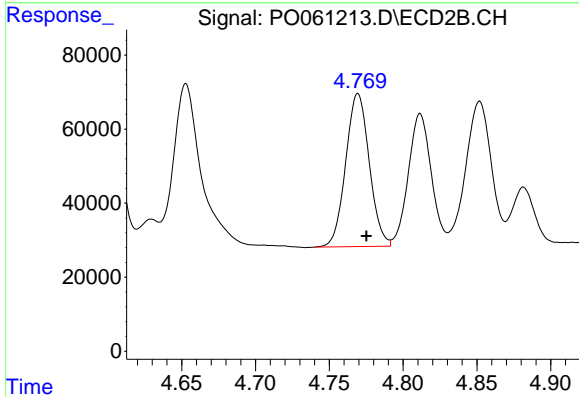
#12 AR-1232-2
 R.T.: 4.599 min
 Delta R.T.: -0.006 min
 Response: 820200
 Conc: 812.35 ng/ml



#13 AR-1232-3

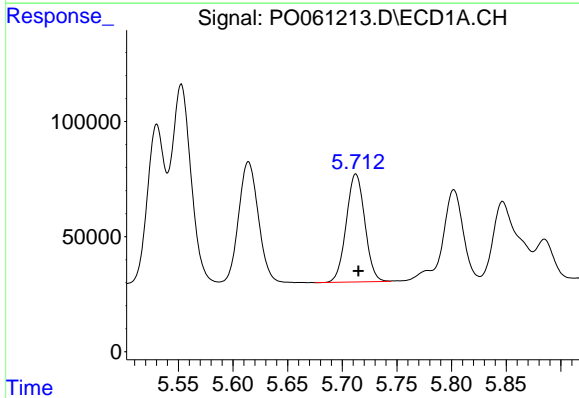
R.T.: 5.553 min
 Delta R.T.: -0.002 min
 Response: 1066117
 Conc: 795.99 ng/ml

Instrument :
 ECD_O
 ClientSampled :



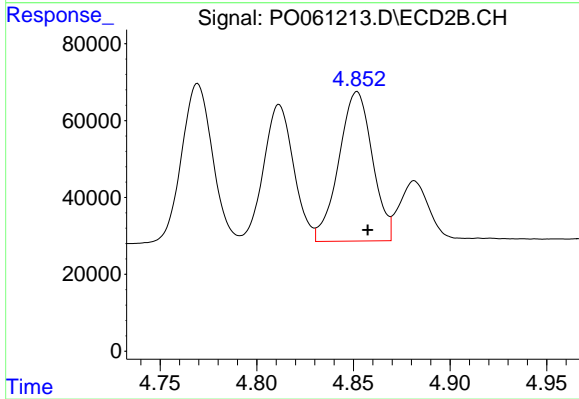
#13 AR-1232-3

R.T.: 4.769 min
 Delta R.T.: -0.006 min
 Response: 460239
 Conc: 820.10 ng/ml



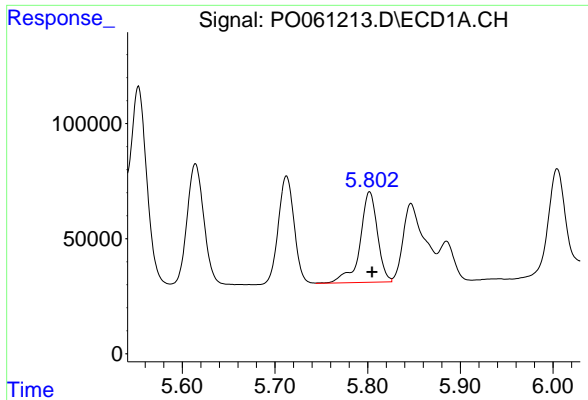
#14 AR-1232-4

R.T.: 5.712 min
 Delta R.T.: -0.002 min
 Response: 555984
 Conc: 809.12 ng/ml



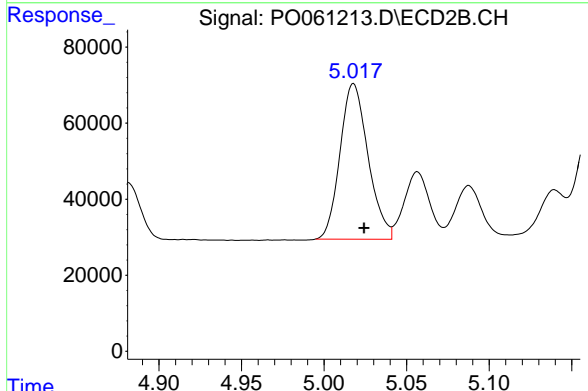
#14 AR-1232-4

R.T.: 4.852 min
 Delta R.T.: -0.006 min
 Response: 470091
 Conc: 900.18 ng/ml

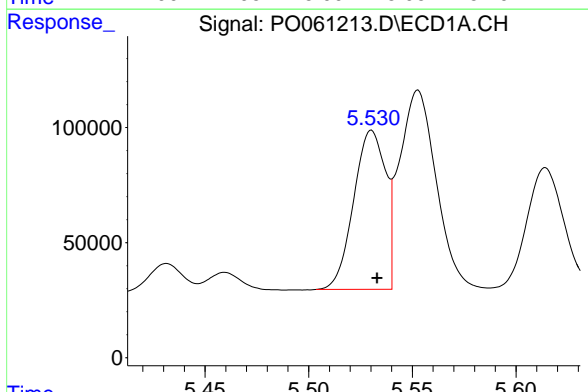


#15 AR-1232-5
 R.T.: 5.802 min
 Delta R.T.: -0.003 min
 Response: 514434
 Conc: 939.45 ng/ml

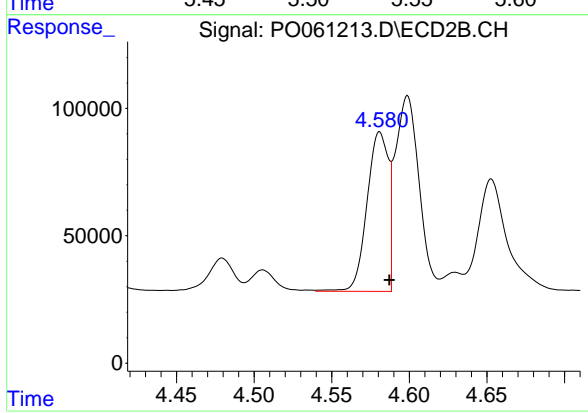
Instrument :
 ECD_O
 ClientSampled :



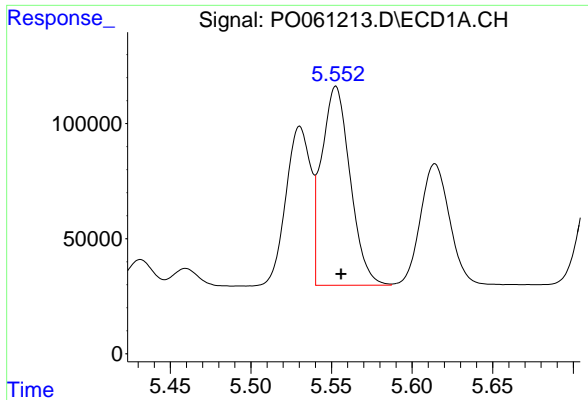
#15 AR-1232-5
 R.T.: 5.018 min
 Delta R.T.: -0.006 min
 Response: 484299
 Conc: 855.75 ng/ml



#16 AR-1242-1
 R.T.: 5.530 min
 Delta R.T.: -0.003 min
 Response: 740342
 Conc: 620.36 ng/ml



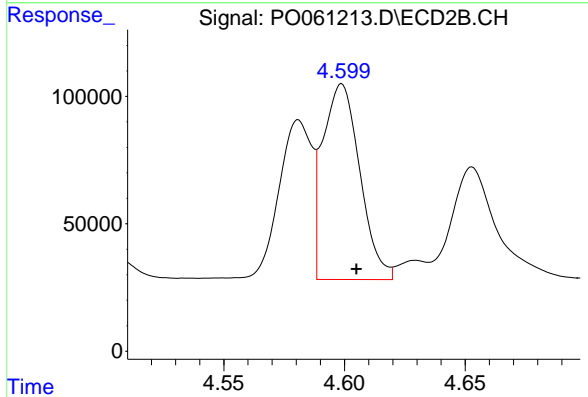
#16 AR-1242-1
 R.T.: 4.581 min
 Delta R.T.: -0.006 min
 Response: 599036
 Conc: 658.00 ng/ml



#17 AR-1242-2

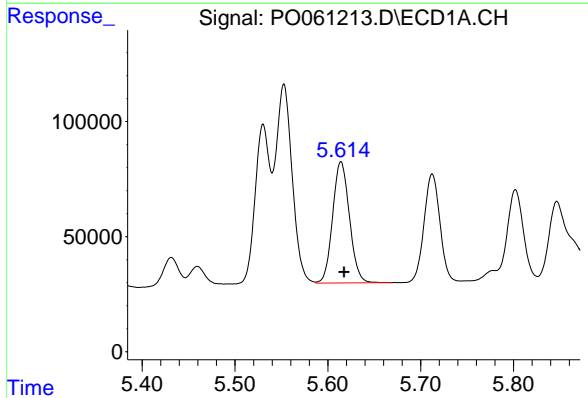
R.T.: 5.553 min
 Delta R.T.: -0.003 min
 Response: 1066117
 Conc: 623.79 ng/ml

Instrument :
 ECD_O
 ClientSampled :



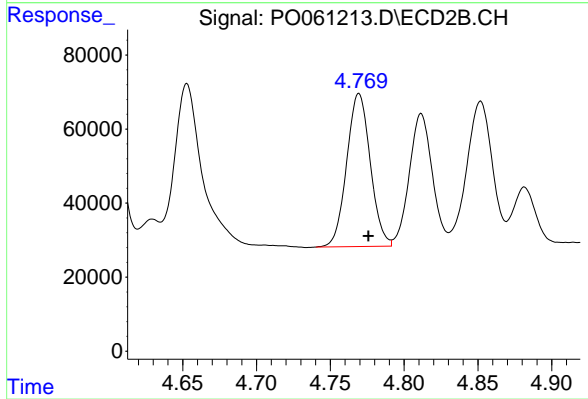
#17 AR-1242-2

R.T.: 4.599 min
 Delta R.T.: -0.006 min
 Response: 820200
 Conc: 655.19 ng/ml



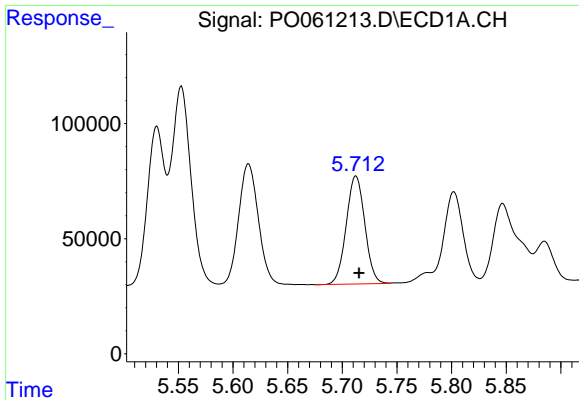
#18 AR-1242-3

R.T.: 5.614 min
 Delta R.T.: -0.003 min
 Response: 663564
 Conc: 612.78 ng/ml



#18 AR-1242-3

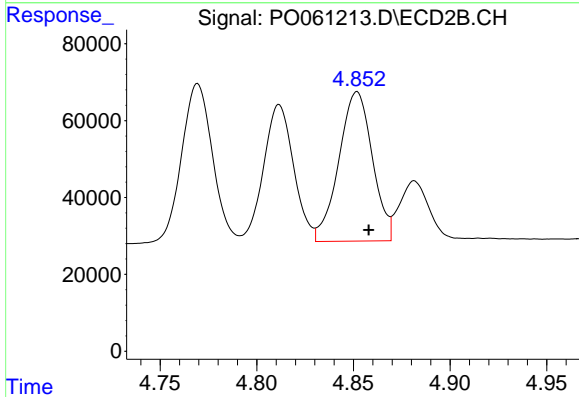
R.T.: 4.769 min
 Delta R.T.: -0.006 min
 Response: 460239
 Conc: 644.09 ng/ml



#19 AR-1242-4

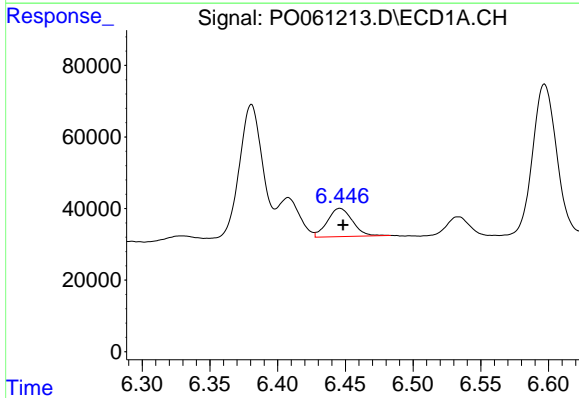
R.T.: 5.712 min
 Delta R.T.: -0.003 min
 Response: 555984
 Conc: 629.79 ng/ml

Instrument :
 ECD_O
 ClientSampled :



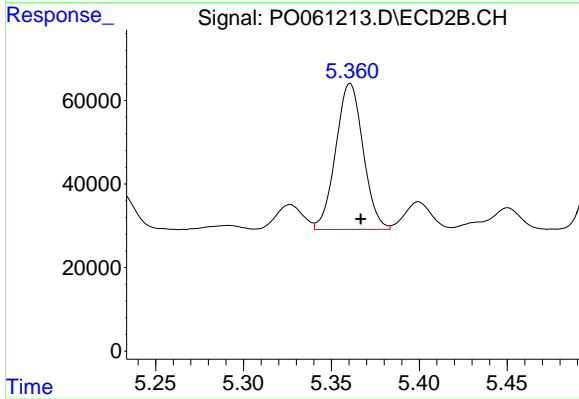
#19 AR-1242-4

R.T.: 4.852 min
 Delta R.T.: -0.006 min
 Response: 470091
 Conc: 645.52 ng/ml



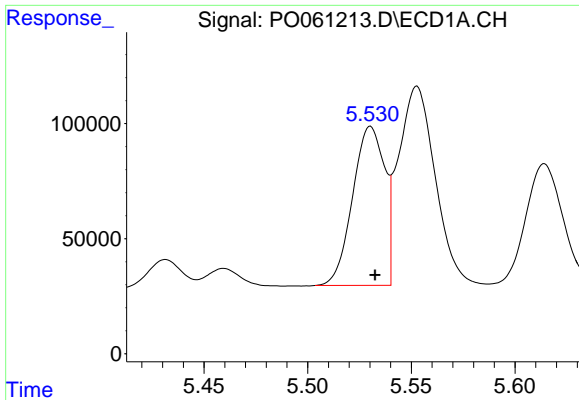
#20 AR-1242-5

R.T.: 6.446 min
 Delta R.T.: -0.002 min
 Response: 101002
 Conc: 90.13 ng/ml



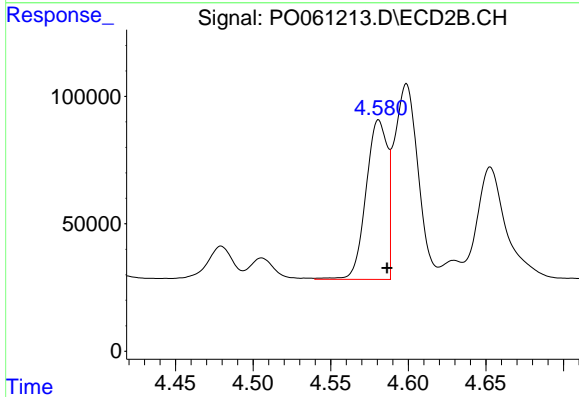
#20 AR-1242-5

R.T.: 5.361 min
 Delta R.T.: -0.006 min
 Response: 379021
 Conc: 382.89 ng/ml

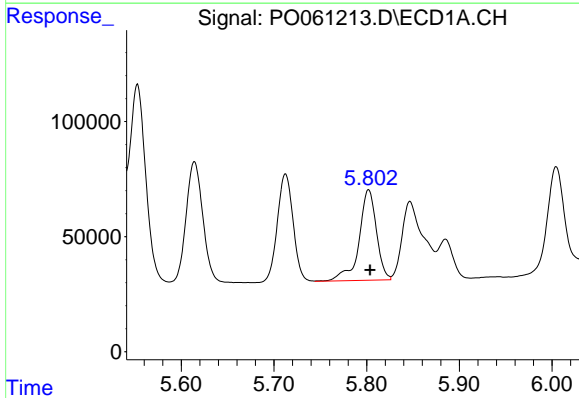


#21 AR-1248-1
 R.T.: 5.530 min
 Delta R.T.: -0.002 min
 Response: 740342
 Conc: 804.20 ng/ml

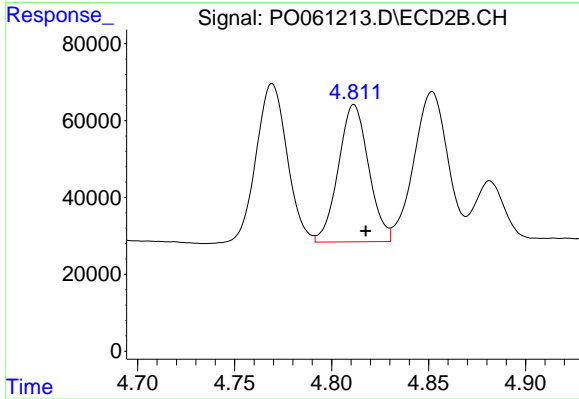
Instrument :
 ECD_O
 ClientSampled :



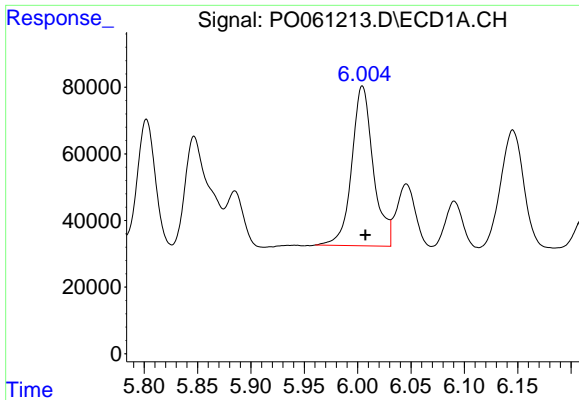
#21 AR-1248-1
 R.T.: 4.581 min
 Delta R.T.: -0.005 min
 Response: 599036
 Conc: 844.57 ng/ml



#22 AR-1248-2
 R.T.: 5.802 min
 Delta R.T.: -0.001 min
 Response: 514434
 Conc: 384.69 ng/ml



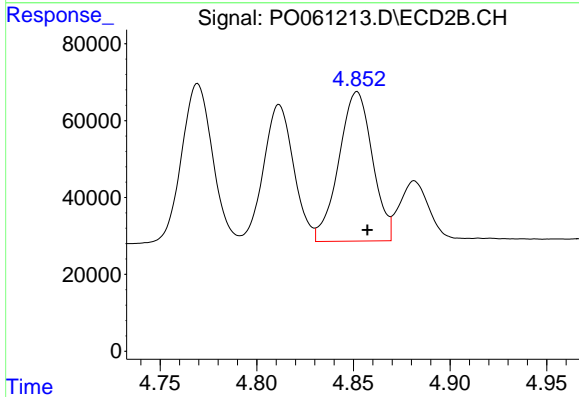
#22 AR-1248-2
 R.T.: 4.812 min
 Delta R.T.: -0.006 min
 Response: 387883
 Conc: 401.45 ng/ml



#23 AR-1248-3

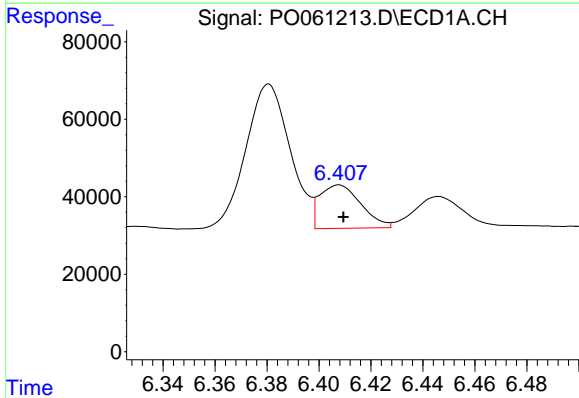
R.T.: 6.004 min
 Delta R.T.: -0.003 min
 Response: 673914
 Conc: 445.29 ng/ml

Instrument :
 ECD_O
 ClientSampled :



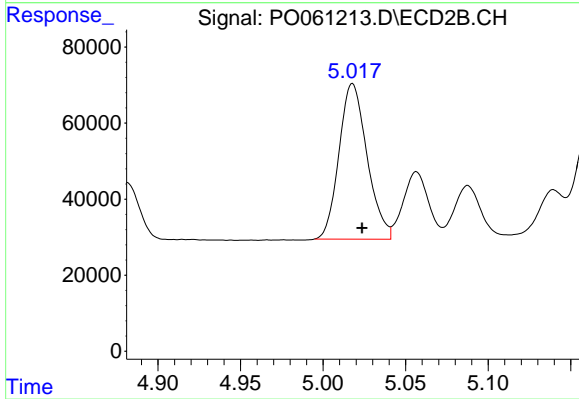
#23 AR-1248-3

R.T.: 4.852 min
 Delta R.T.: -0.005 min
 Response: 470091
 Conc: 466.76 ng/ml



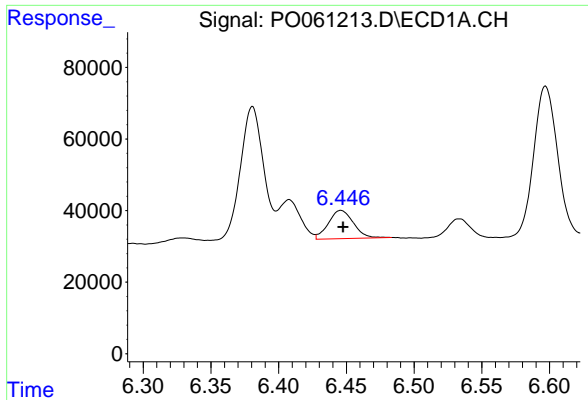
#24 AR-1248-4

R.T.: 6.408 min
 Delta R.T.: -0.002 min
 Response: 123561
 Conc: 67.82 ng/ml



#24 AR-1248-4

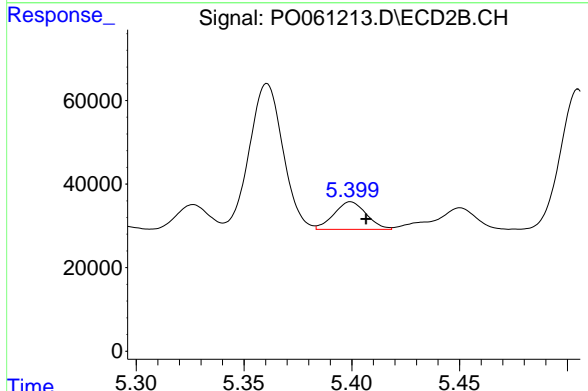
R.T.: 5.018 min
 Delta R.T.: -0.006 min
 Response: 484299
 Conc: 403.27 ng/ml



#25 AR-1248-5

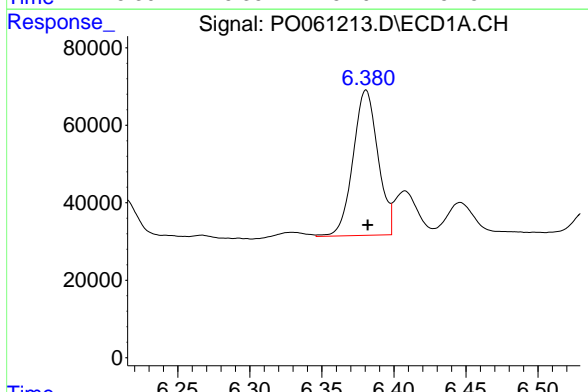
R.T.: 6.446 min
 Delta R.T.: -0.002 min
 Response: 101002
 Conc: 57.73 ng/ml

Instrument :
 ECD_O
 ClientSampled :



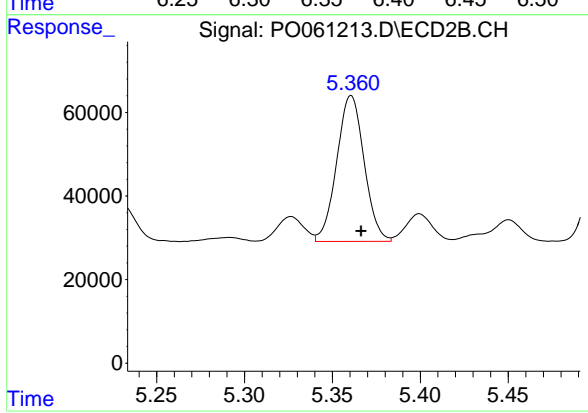
#25 AR-1248-5

R.T.: 5.399 min
 Delta R.T.: -0.007 min
 Response: 69223
 Conc: 54.76 ng/ml



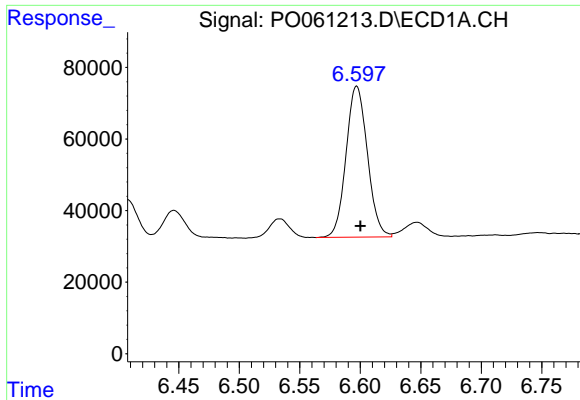
#26 AR-1254-1

R.T.: 6.381 min
 Delta R.T.: -0.001 min
 Response: 450997
 Conc: 234.08 ng/ml



#26 AR-1254-1

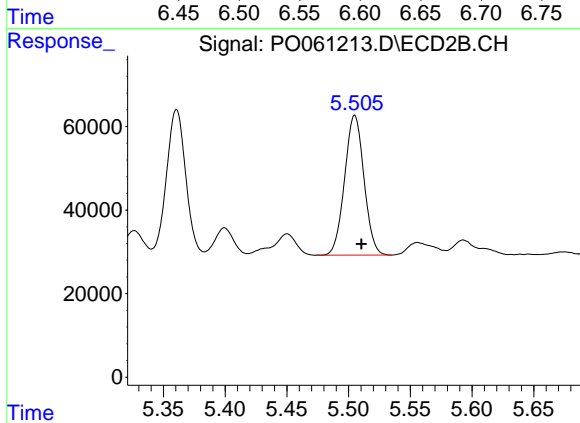
R.T.: 5.361 min
 Delta R.T.: -0.006 min
 Response: 379021
 Conc: 183.91 ng/ml



#27 AR-1254-2

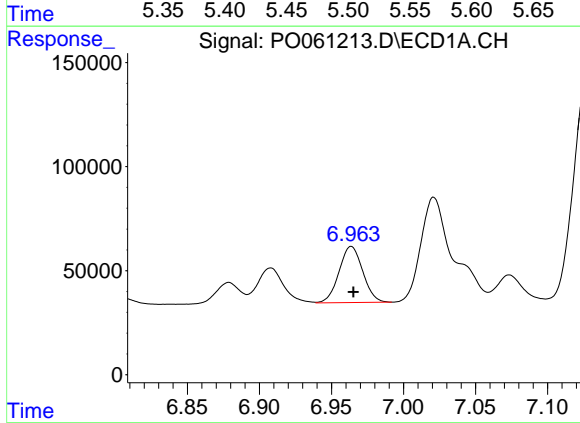
R.T.: 6.597 min
 Delta R.T.: -0.003 min
 Response: 518927
 Conc: 164.90 ng/ml

Instrument :
 ECD_O
 ClientSampleId :



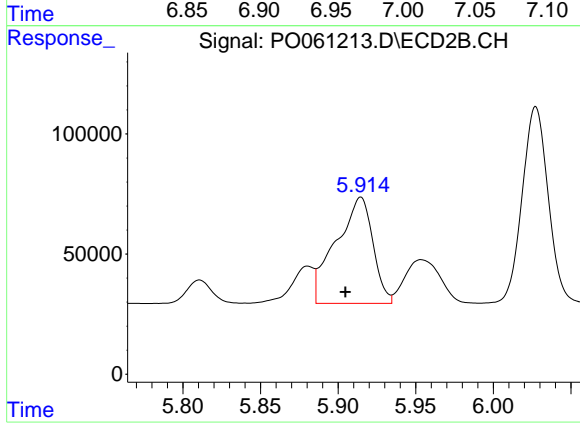
#27 AR-1254-2

R.T.: 5.505 min
 Delta R.T.: -0.005 min
 Response: 365862
 Conc: 193.88 ng/ml



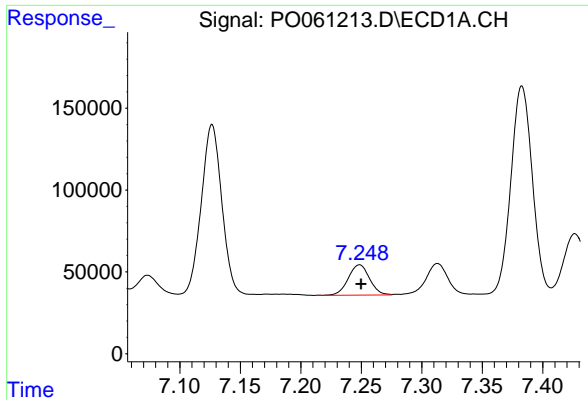
#28 AR-1254-3

R.T.: 6.964 min
 Delta R.T.: -0.001 min
 Response: 309439
 Conc: 87.86 ng/ml



#28 AR-1254-3

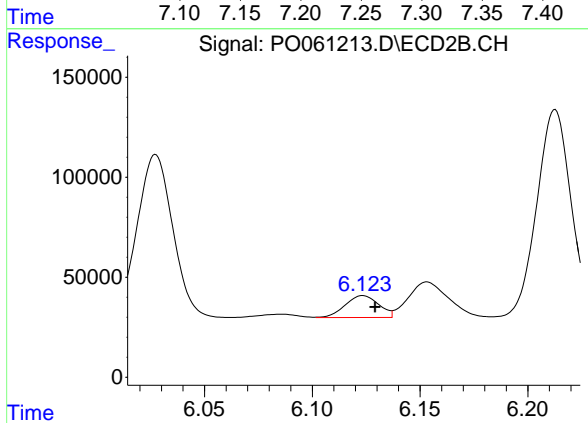
R.T.: 5.915 min
 Delta R.T.: 0.010 min
 Response: 732832
 Conc: 230.49 ng/ml



#29 AR-1254-4

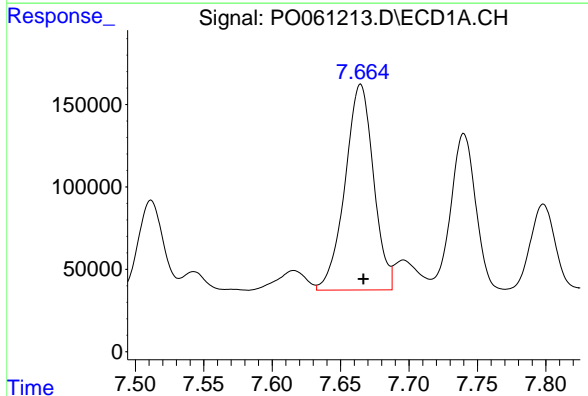
R.T.: 7.249 min
 Delta R.T.: -0.001 min
 Response: 227468
 Conc: 84.03 ng/ml

Instrument :
 ECD_O
 ClientSampled :



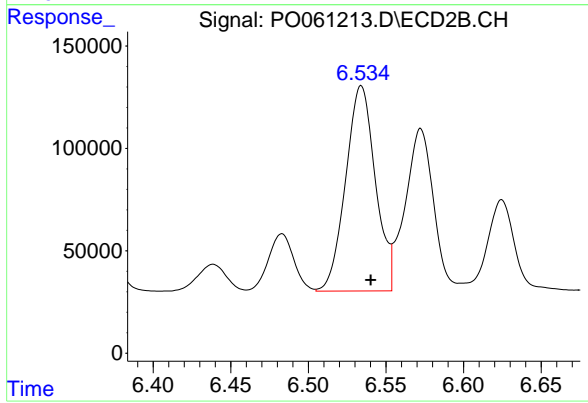
#29 AR-1254-4

R.T.: 6.123 min
 Delta R.T.: -0.006 min
 Response: 118901
 Conc: 57.11 ng/ml



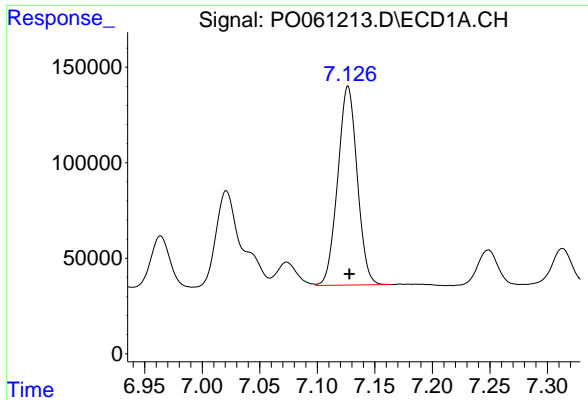
#30 AR-1254-5

R.T.: 7.665 min
 Delta R.T.: -0.002 min
 Response: 1809676
 Conc: 613.70 ng/ml



#30 AR-1254-5

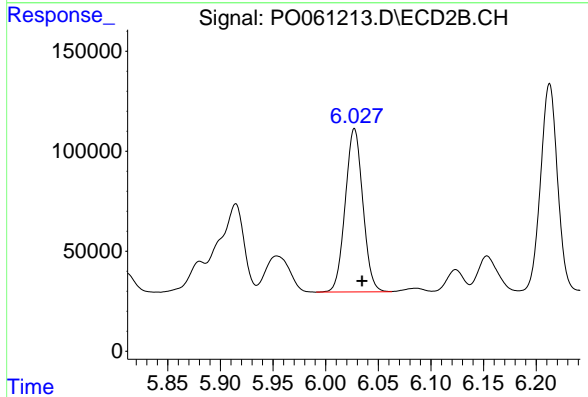
R.T.: 6.534 min
 Delta R.T.: -0.006 min
 Response: 1336063
 Conc: 422.15 ng/ml



#31 AR-1260-1

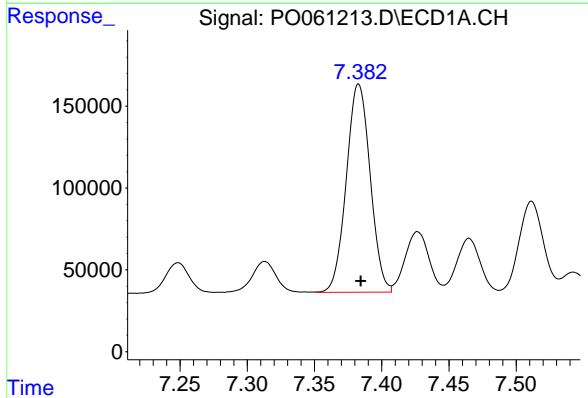
R.T.: 7.127 min
 Delta R.T.: -0.001 min
 Response: 1229676
 Conc: 505.08 ng/ml

Instrument :
 ECD_O
 ClientSampled :



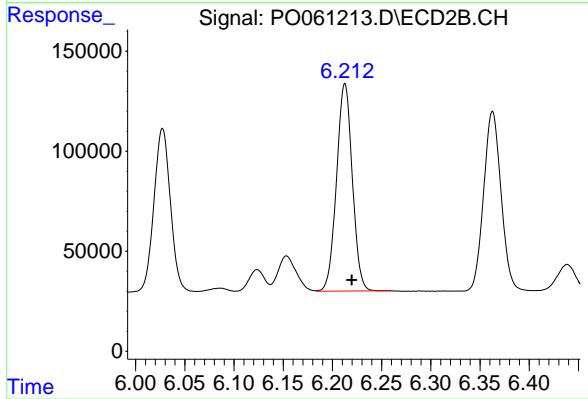
#31 AR-1260-1

R.T.: 6.027 min
 Delta R.T.: -0.007 min
 Response: 952280
 Conc: 452.73 ng/ml



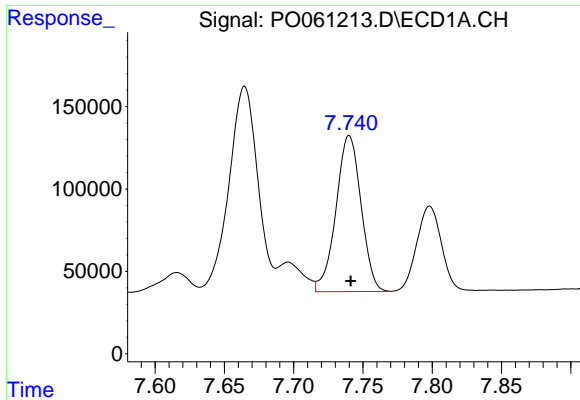
#32 AR-1260-2

R.T.: 7.383 min
 Delta R.T.: -0.002 min
 Response: 1570207
 Conc: 519.36 ng/ml



#32 AR-1260-2

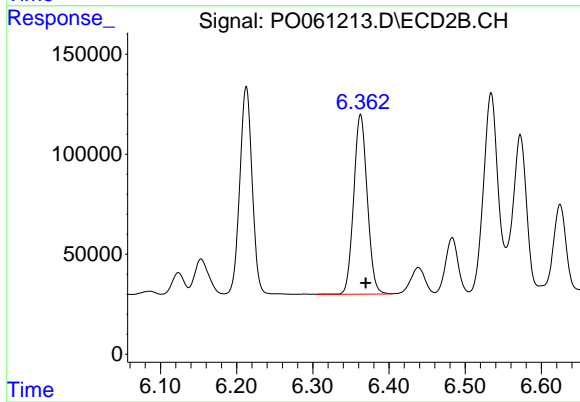
R.T.: 6.213 min
 Delta R.T.: -0.007 min
 Response: 1157472
 Conc: 448.72 ng/ml



#33 AR-1260-3

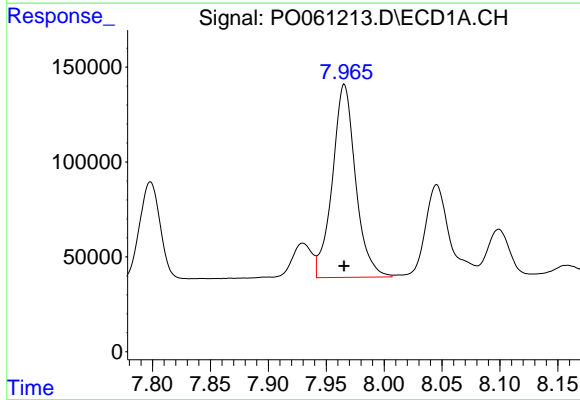
R.T.: 7.740 min
Delta R.T.: -0.001 min
Response: 1191454
Conc: 499.26 ng/ml

Instrument :
ECD_O
ClientSampleId :



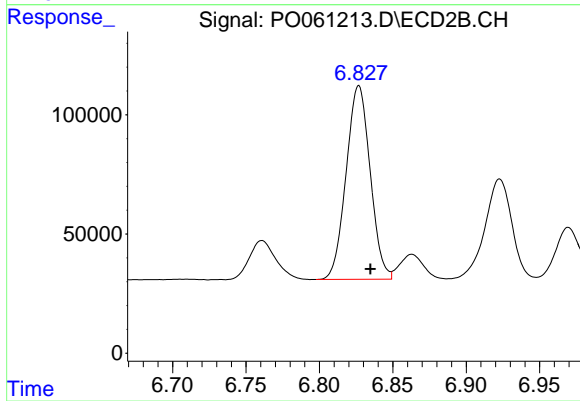
#33 AR-1260-3

R.T.: 6.363 min
Delta R.T.: -0.007 min
Response: 1109316
Conc: 460.67 ng/ml



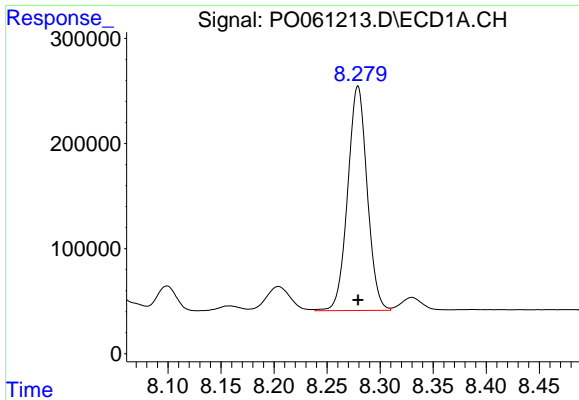
#34 AR-1260-4

R.T.: 7.966 min
Delta R.T.: 0.000 min
Response: 1420029
Conc: 507.57 ng/ml



#34 AR-1260-4

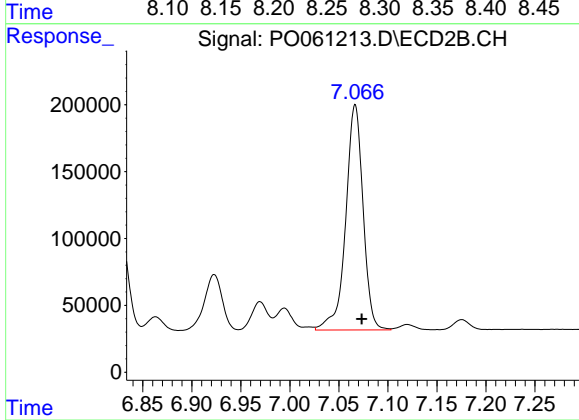
R.T.: 6.827 min
Delta R.T.: -0.008 min
Response: 926473
Conc: 432.88 ng/ml



#35 AR-1260-5

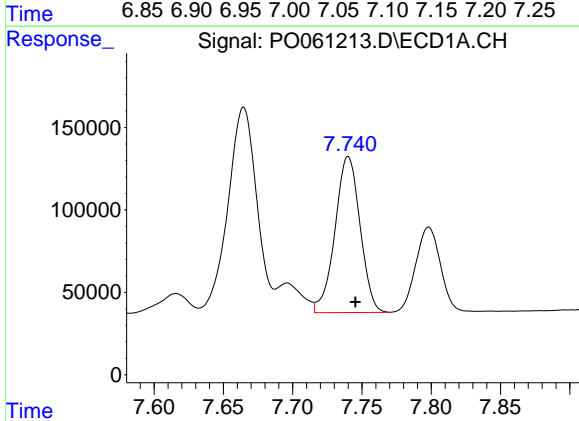
R.T.: 8.279 min
 Delta R.T.: 0.000 min
 Response: 2725048
 Conc: 500.44 ng/ml

Instrument :
 ECD_O
 ClientSampleId :



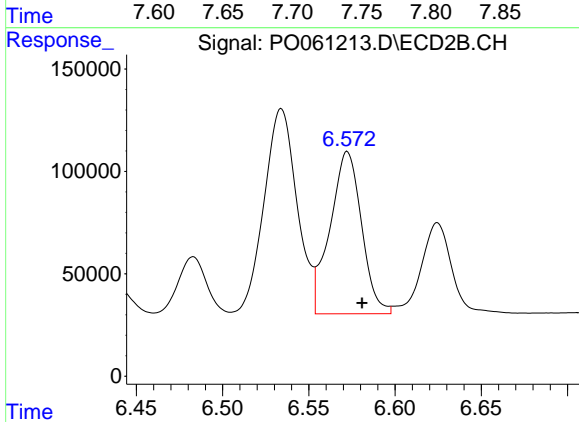
#35 AR-1260-5

R.T.: 7.067 min
 Delta R.T.: -0.007 min
 Response: 2080114
 Conc: 430.44 ng/ml



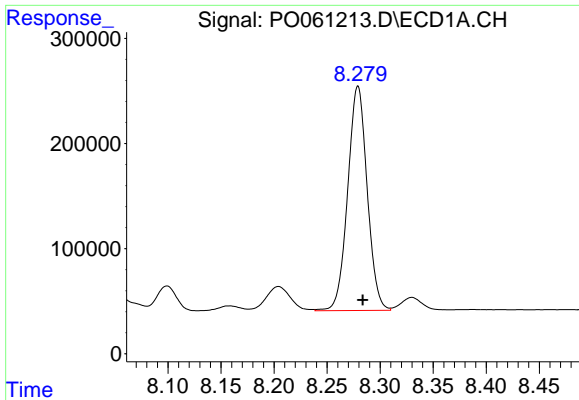
#36 AR-1262-1

R.T.: 7.740 min
 Delta R.T.: -0.005 min
 Response: 1191454
 Conc: 337.30 ng/ml



#36 AR-1262-1

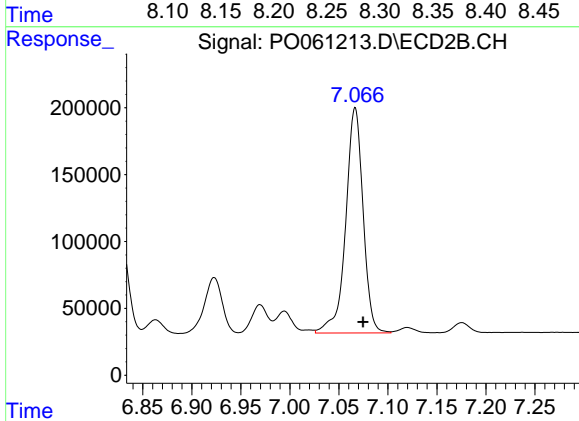
R.T.: 6.572 min
 Delta R.T.: -0.008 min
 Response: 1009075
 Conc: 337.83 ng/ml



#37 AR-1262-2

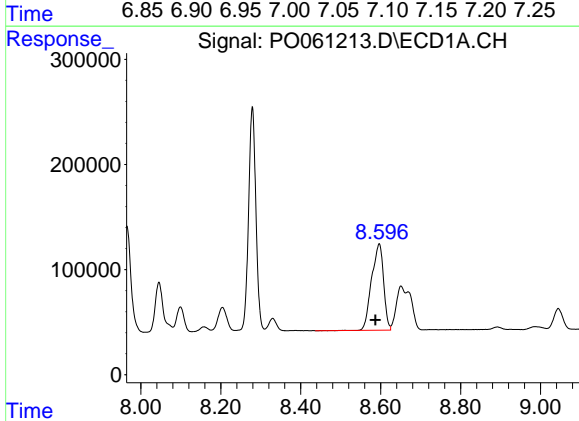
R.T.: 8.279 min
 Delta R.T.: -0.004 min
 Response: 2725048
 Conc: 437.09 ng/ml

Instrument :
 ECD_O
 ClientSampleId :



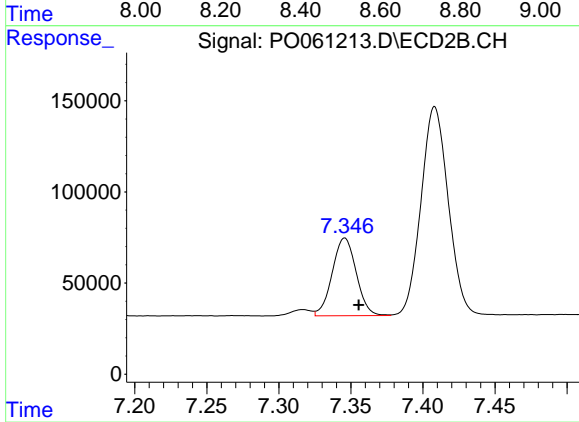
#37 AR-1262-2

R.T.: 7.067 min
 Delta R.T.: -0.008 min
 Response: 2080114
 Conc: 400.06 ng/ml



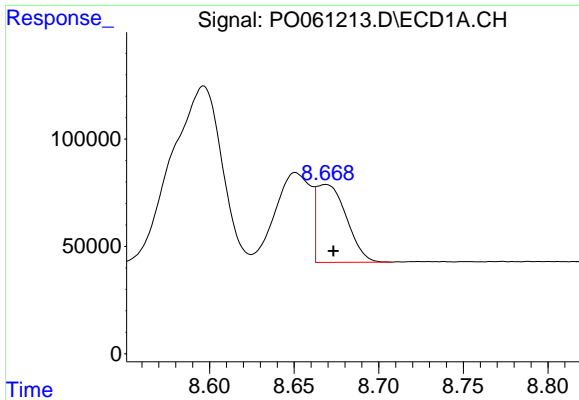
#38 AR-1262-3

R.T.: 8.596 min
 Delta R.T.: 0.010 min
 Response: 1707569
 Conc: 400.75 ng/ml



#38 AR-1262-3

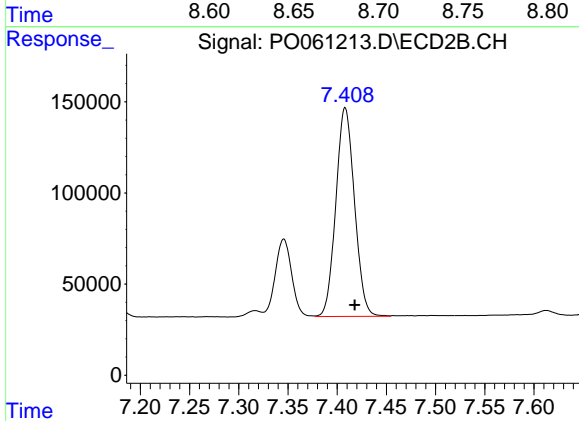
R.T.: 7.346 min
 Delta R.T.: -0.010 min
 Response: 494348
 Conc: 232.92 ng/ml



#39 AR-1262-4

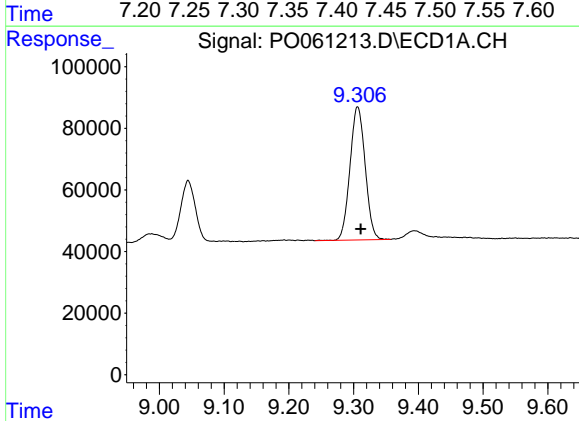
R.T.: 8.669 min
 Delta R.T.: -0.005 min
 Response: 445215
 Conc: 136.55 ng/ml

Instrument :
 ECD_O
 ClientSampleId :



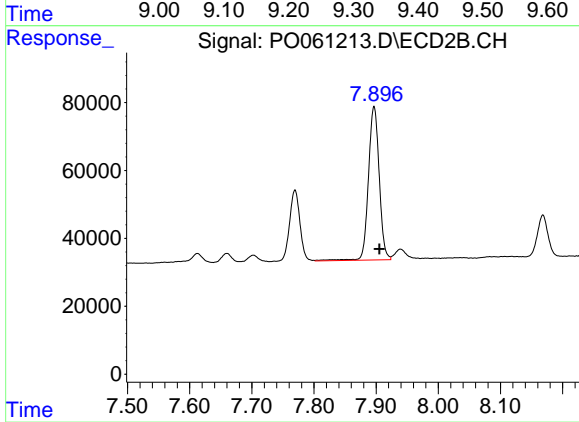
#39 AR-1262-4

R.T.: 7.408 min
 Delta R.T.: -0.010 min
 Response: 1508477
 Conc: 394.94 ng/ml



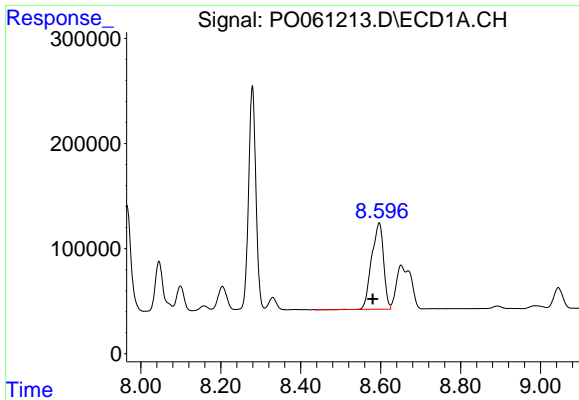
#40 AR-1262-5

R.T.: 9.306 min
 Delta R.T.: -0.005 min
 Response: 704019
 Conc: 346.23 ng/ml



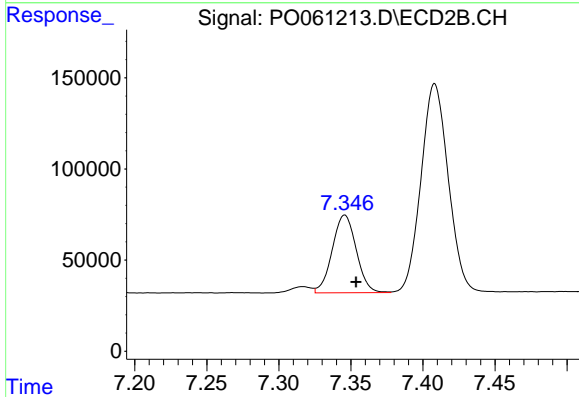
#40 AR-1262-5

R.T.: 7.897 min
 Delta R.T.: -0.009 min
 Response: 544614
 Conc: 325.38 ng/ml

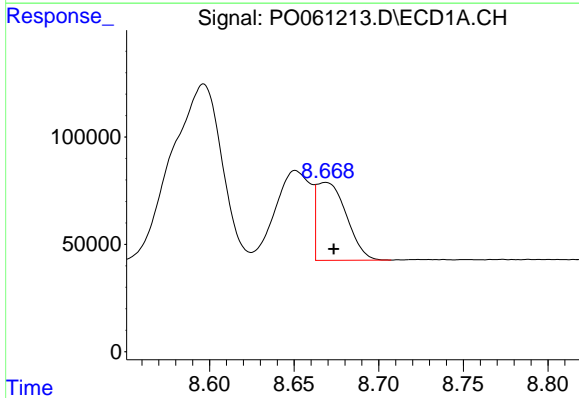


#41 AR-1268-1
 R.T.: 8.596 min
 Delta R.T.: 0.016 min
 Response: 1707569
 Conc: 231.36 ng/ml

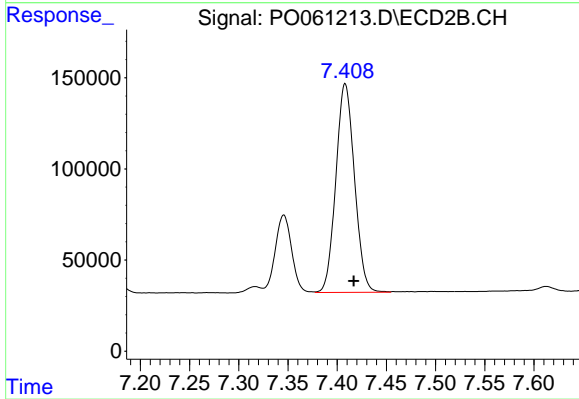
Instrument :
 ECD_O
 ClientSampled :



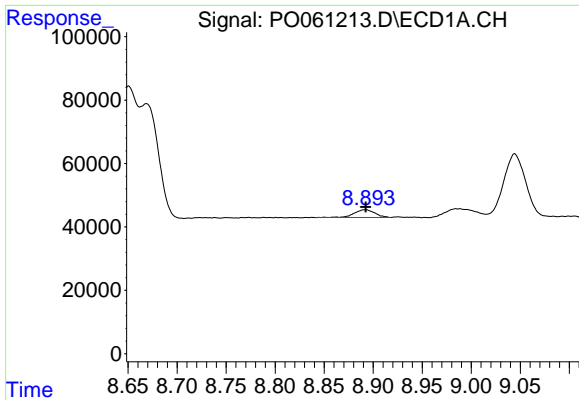
#41 AR-1268-1
 R.T.: 7.346 min
 Delta R.T.: -0.008 min
 Response: 494348
 Conc: 84.33 ng/ml



#42 AR-1268-2
 R.T.: 8.669 min
 Delta R.T.: -0.005 min
 Response: 445215
 Conc: 65.91 ng/ml



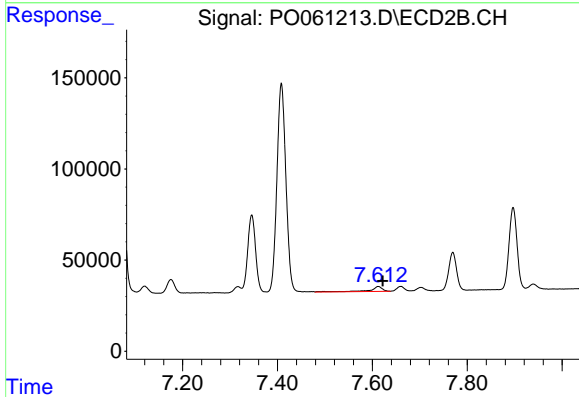
#42 AR-1268-2
 R.T.: 7.408 min
 Delta R.T.: -0.009 min
 Response: 1508477
 Conc: 283.02 ng/ml



#43 AR-1268-3

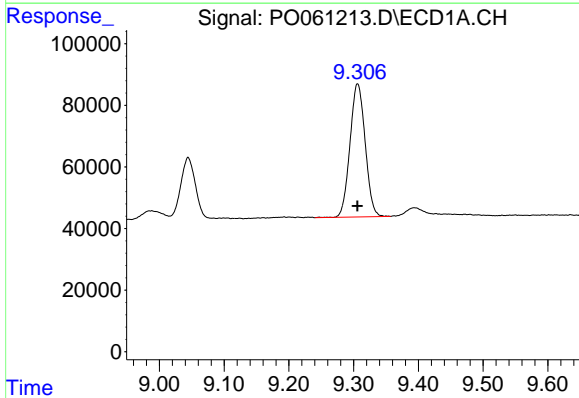
R.T.: 8.892 min
 Delta R.T.: 0.000 min
 Response: 35931
 Conc: 6.40 ng/ml

Instrument :
 ECD_O
 ClientSampled :



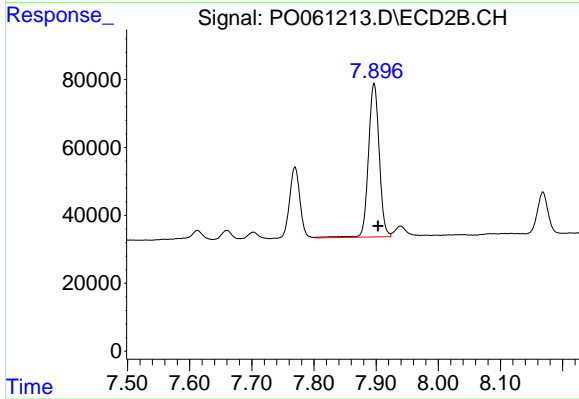
#43 AR-1268-3

R.T.: 7.612 min
 Delta R.T.: -0.009 min
 Response: 47969
 Conc: 10.82 ng/ml



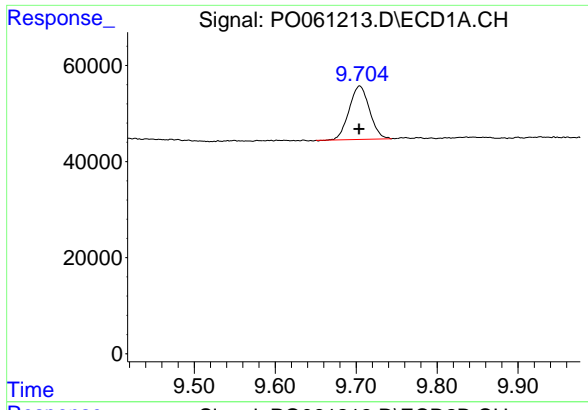
#44 AR-1268-4

R.T.: 9.306 min
 Delta R.T.: 0.000 min
 Response: 704019
 Conc: 305.20 ng/ml



#44 AR-1268-4

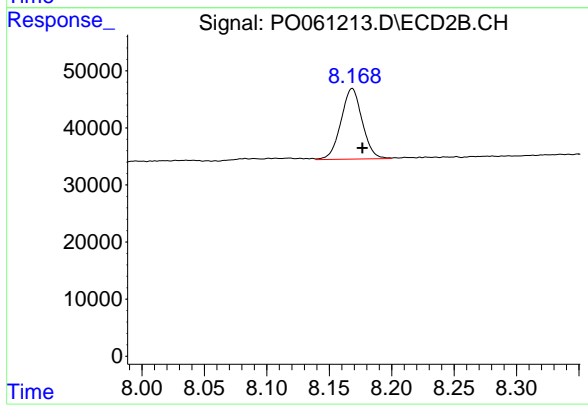
R.T.: 7.897 min
 Delta R.T.: -0.007 min
 Response: 544614
 Conc: 285.01 ng/ml



#45 AR-1268-5

R.T.: 9.704 min
Delta R.T.: 0.000 min
Response: 194228
Conc: 12.25 ng/ml

Instrument :
ECD_O
ClientSampleId :



#45 AR-1268-5

R.T.: 8.168 min
Delta R.T.: -0.008 min
Response: 146767
Conc: 12.20 ng/ml