

Data Path : Z:\pestpcbsrv\HPCHEM1\ECD\_0\Data\P0092023\  
 Data File : P0098196.D  
 Signal(s) : Signal #1: ECD1A.ch Signal #2: ECD2B.ch  
 Acq On : 21 Sep 2023 02:33  
 Operator : YP/AJ  
 Sample : AR1248CCC500  
 Misc :  
 ALS Vial : 5 Sample Multiplier: 1

Instrument :  
 ECD\_0  
 ClientSampleId :  
 AR1248CCC500

Integration File signal 1: autoint1.e  
 Integration File signal 2: autoint2.e  
 Quant Time: Sep 21 02:46:45 2023  
 Quant Method : Z:\pestpcbsrv\HPCHEM1\ECD\_0\methods\P0091923.M  
 Quant Title : GC EXTRACTABLES  
 QLast Update : Wed Sep 20 07:12:48 2023  
 Response via : Initial Calibration  
 Integrator: ChemStation

Volume Inj. : 2 µl  
 Signal #1 Phase : ZB-MR1 Signal #2 Phase: ZB-MR2  
 Signal #1 Info : 30Mx0.32mmx 0.50µ Signal #2 Info : 30M x 0.32mm x 0.25µm

Compound	RT#1	RT#2	Resp#1	Resp#2	ng/ml	ng/ml
-----						
System Monitoring Compounds						
1) SA Tetrachlo...	4.495	3.637	143.1E6	70067329	47.859	63.112 #
2) SA Decachlor...	10.337	8.655	87122252	56531325	49.905m	51.315
Target Compounds						
21) L5 AR-1248-1	5.675	4.723	27582117	14862716	457.575	478.222
22) L5 AR-1248-2	5.951	4.961	39634839	20030941	457.205	469.977
23) L5 AR-1248-3	6.157	5.002	42432283	21471066	462.200	467.890
24) L5 AR-1248-4	6.564	5.174	45363054	25172214	458.526	481.180
25) L5 AR-1248-5	6.603	5.568	44677339	25124923	425.909	484.713
-----						

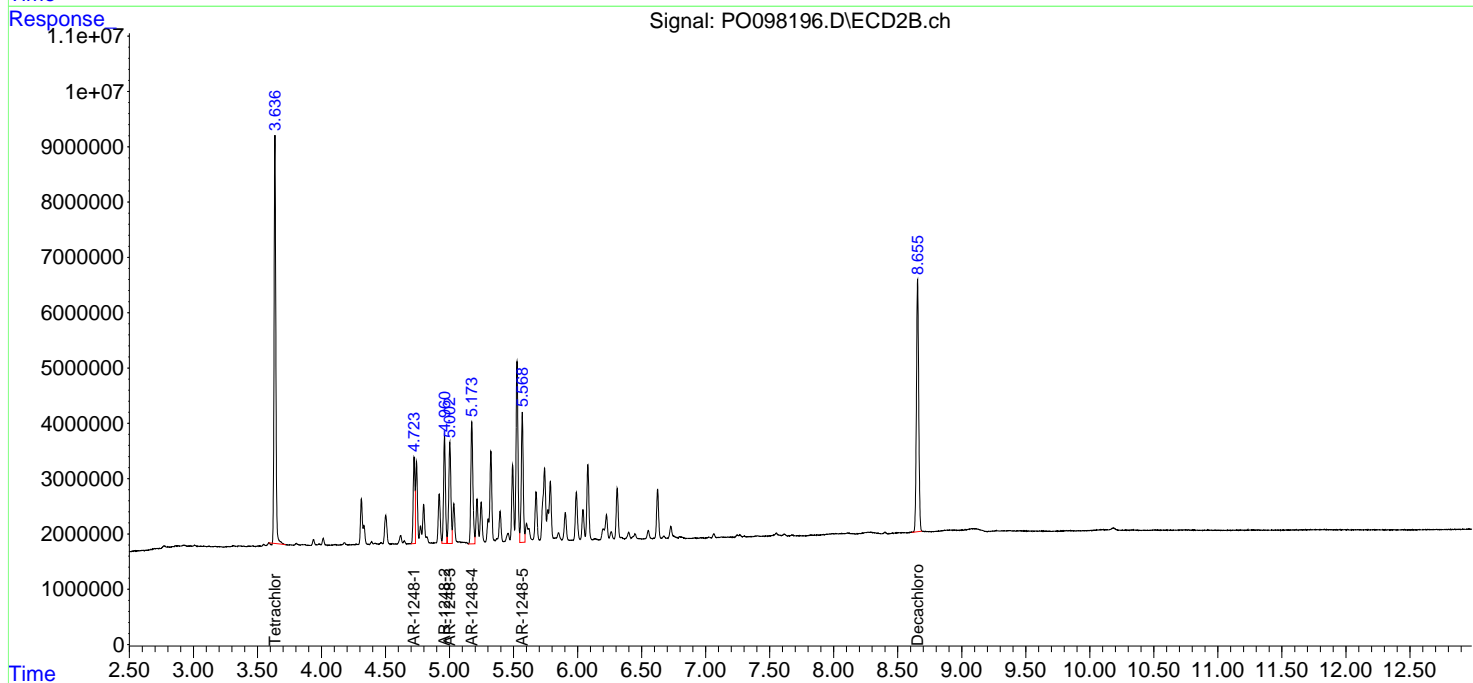
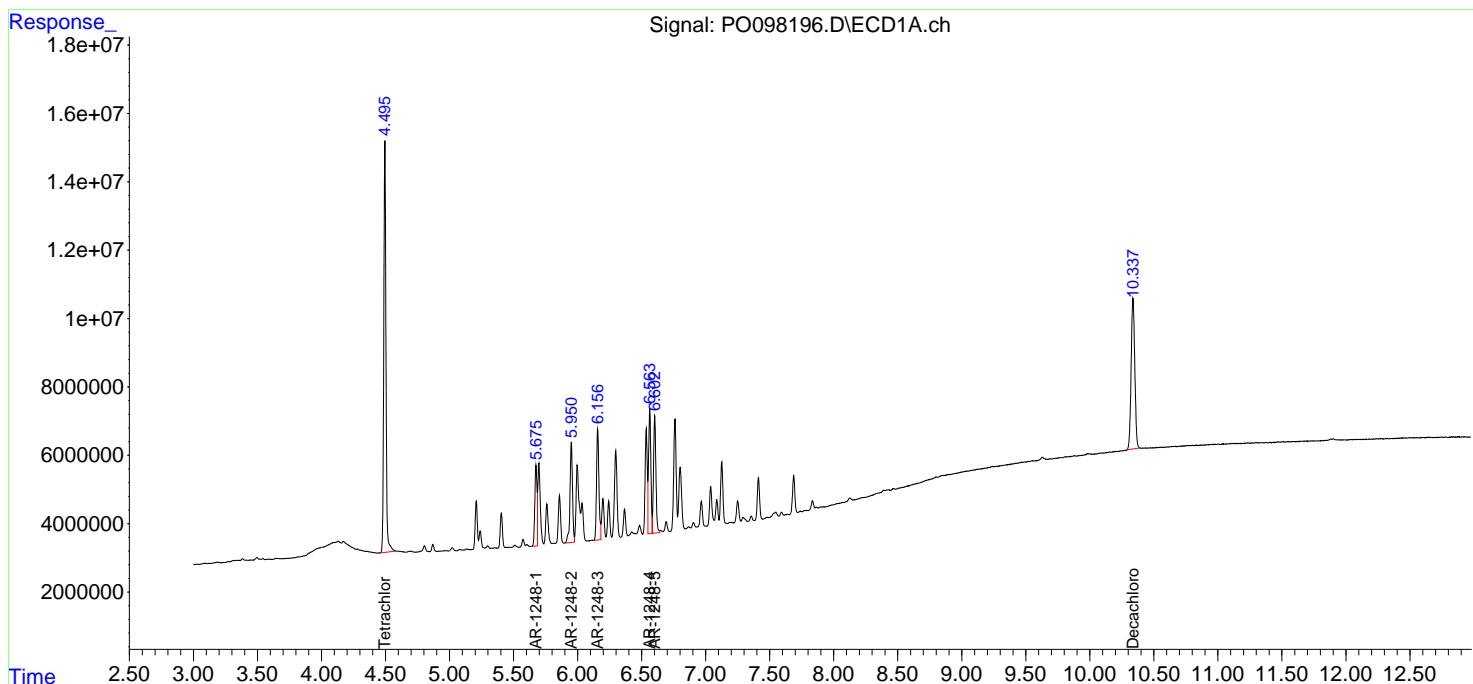
(f)=RT Delta > 1/2 Window (#)=Amounts differ by > 25% (m)=manual int.

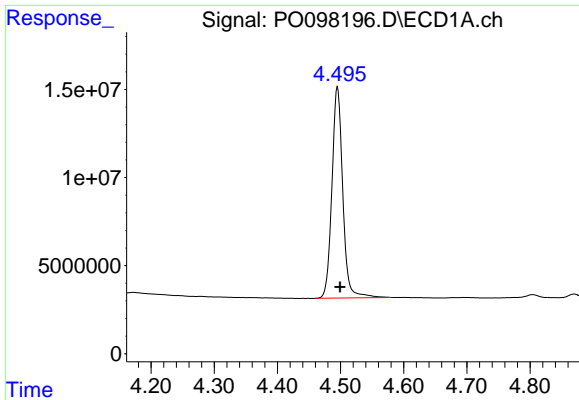
Data Path : Z:\pestpcbsrv\HPCHEM1\ECD\_O\Data\PO092023\  
 Data File : PO098196.D  
 Signal(s) : Signal #1: ECD1A.ch Signal #2: ECD2B.ch  
 Acq On : 21 Sep 2023 02:33  
 Operator : YP/AJ  
 Sample : AR1248CCC500  
 Misc :  
 ALS Vial : 5 Sample Multiplier: 1

Instrument :  
 ECD\_O  
 ClientSampleId :  
 AR1248CCC500

Integration File signal 1: autoint1.e  
 Integration File signal 2: autoint2.e  
 Quant Time: Sep 21 02:46:45 2023  
 Quant Method : Z:\pestpcbsrv\HPCHEM1\ECD\_O\methods\PO091923.M  
 Quant Title : GC EXTRACTABLES  
 QLast Update : Wed Sep 20 07:12:48 2023  
 Response via : Initial Calibration  
 Integrator: ChemStation

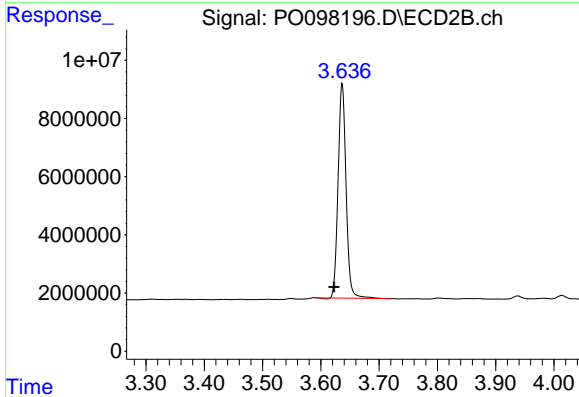
Volume Inj. : 2 µl  
 Signal #1 Phase : ZB-MR1 Signal #2 Phase: ZB-MR2  
 Signal #1 Info : 30Mx0.32mmx 0.50µ Signal #2 Info : 30M x 0.32mm x 0.25µm



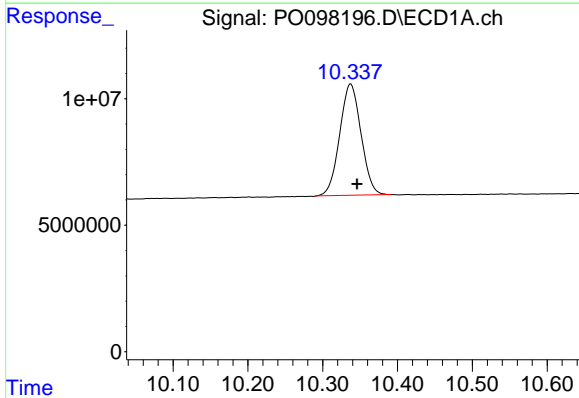


#1 Tetrachloro-m-xylene  
 R.T.: 4.495 min  
 Delta R.T.: -0.004 min  
 Response: 143142000  
 Conc: 47.86 ng/ml

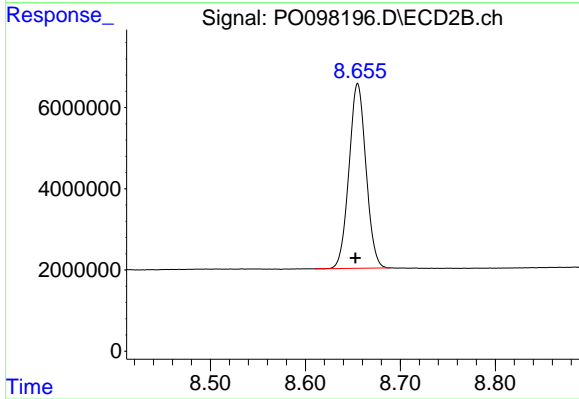
Instrument :  
 ECD\_O  
 ClientSampleId :  
 AR1248CCC500



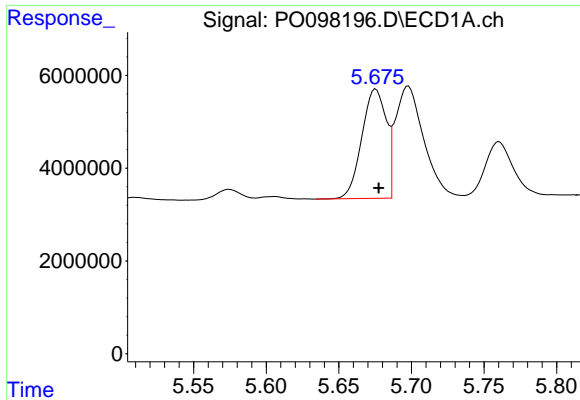
#1 Tetrachloro-m-xylene  
 R.T.: 3.637 min  
 Delta R.T.: 0.014 min  
 Response: 70067329  
 Conc: 63.11 ng/ml



#2 Decachlorobiphenyl  
 R.T.: 10.337 min  
 Delta R.T.: -0.009 min  
 Response: 87122252  
 Conc: 49.90 ng/ml m



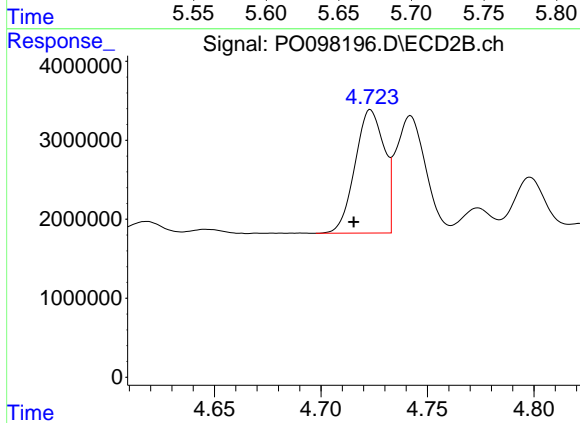
#2 Decachlorobiphenyl  
 R.T.: 8.655 min  
 Delta R.T.: 0.003 min  
 Response: 56531325  
 Conc: 51.32 ng/ml



#21 AR-1248-1

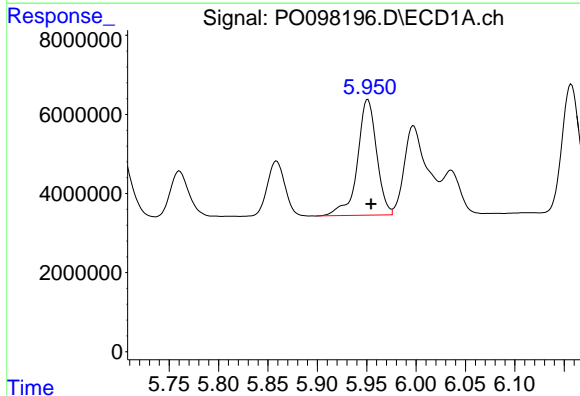
R.T.: 5.675 min  
 Delta R.T.: -0.002 min  
 Response: 27582117  
 Conc: 457.57 ng/ml

Instrument :  
 ECD\_O  
 ClientSampleId :  
 AR1248CCC500



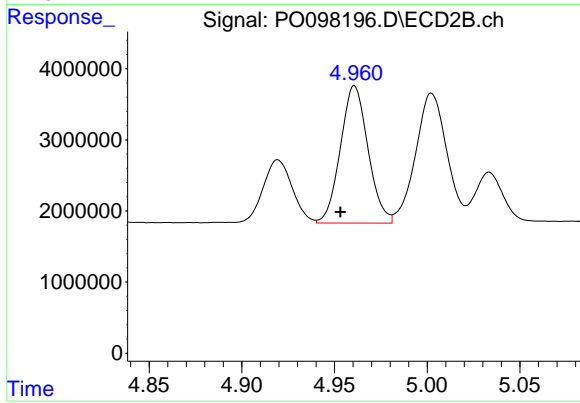
#21 AR-1248-1

R.T.: 4.723 min  
 Delta R.T.: 0.008 min  
 Response: 14862716  
 Conc: 478.22 ng/ml



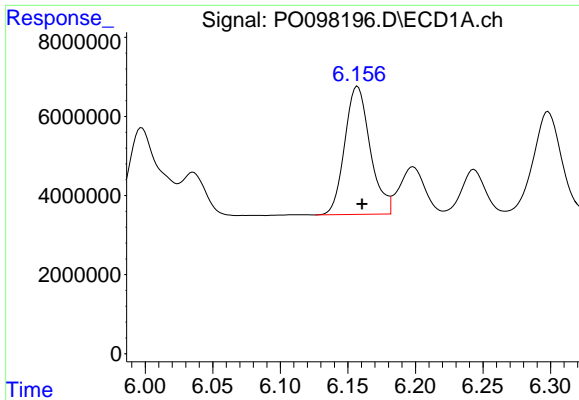
#22 AR-1248-2

R.T.: 5.951 min  
 Delta R.T.: -0.003 min  
 Response: 39634839  
 Conc: 457.20 ng/ml



#22 AR-1248-2

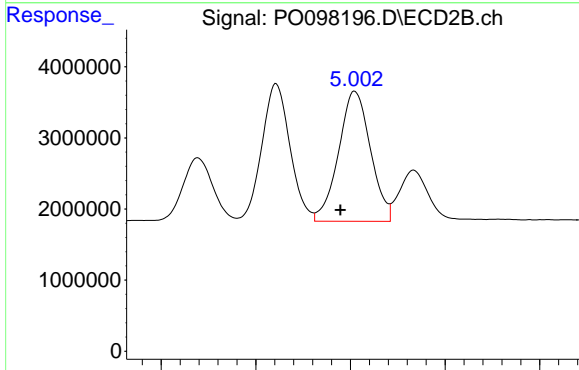
R.T.: 4.961 min  
 Delta R.T.: 0.008 min  
 Response: 20030941  
 Conc: 469.98 ng/ml



#23 AR-1248-3

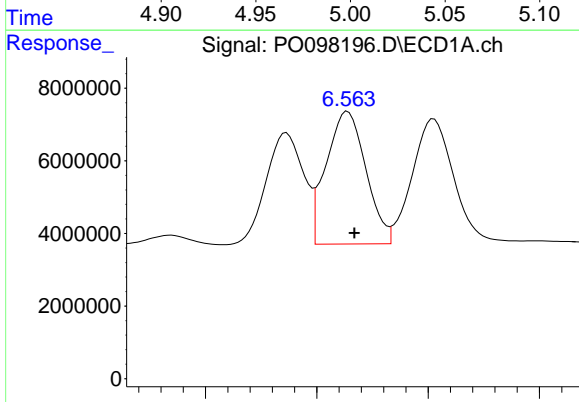
R.T.: 6.157 min  
 Delta R.T.: -0.003 min  
 Response: 42432283  
 Conc: 462.20 ng/ml

Instrument :  
 ECD\_O  
 ClientSampleId :  
 AR1248CCC500



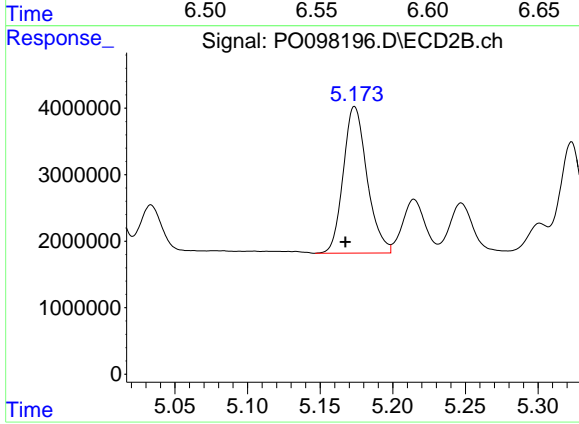
#23 AR-1248-3

R.T.: 5.002 min  
 Delta R.T.: 0.008 min  
 Response: 21471066  
 Conc: 467.89 ng/ml



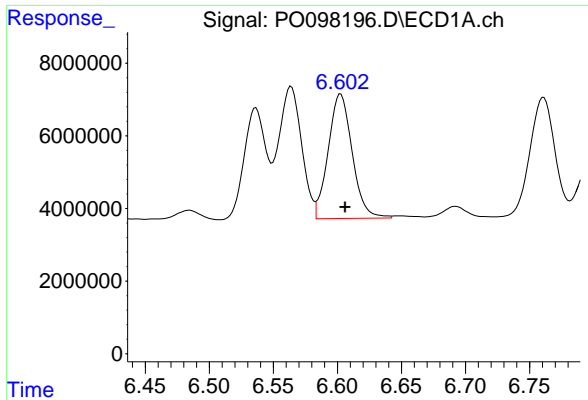
#24 AR-1248-4

R.T.: 6.564 min  
 Delta R.T.: -0.003 min  
 Response: 45363054  
 Conc: 458.53 ng/ml



#24 AR-1248-4

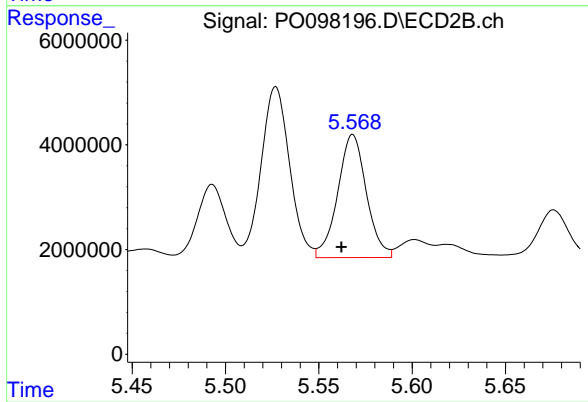
R.T.: 5.174 min  
 Delta R.T.: 0.006 min  
 Response: 25172214  
 Conc: 481.18 ng/ml



#25 AR-1248-5

R.T.: 6.603 min  
Delta R.T.: -0.004 min  
Response: 44677339  
Conc: 425.91 ng/ml

Instrument :  
ECD\_O  
ClientSampleId :  
AR1248CCC500



#25 AR-1248-5

R.T.: 5.568 min  
Delta R.T.: 0.006 min  
Response: 25124923  
Conc: 484.71 ng/ml