

Data Path : Z:\pestpcbsrv\HPCHEM1\ECD_0\Data\P0092024\
 Data File : P0106731.D
 Signal(s) : Signal #1: ECD1A.ch Signal #2: ECD2B.ch
 Acq On : 20 Sep 2024 14:59
 Operator : YP/AJ
 Sample : P4120-09
 Misc :
 ALS Vial : 16 Sample Multiplier: 1

Instrument :
 ECD_0
 ClientSampleId :
 COMP-1

Integration File signal 1: autoint1.e
 Integration File signal 2: autoint2.e
 Quant Time: Sep 21 03:53:32 2024
 Quant Method : Z:\pestpcbsrv\HPCHEM1\ECD_0\methods\P0090924.M
 Quant Title : GC EXTRACTABLES
 QLast Update : Tue Sep 10 09:57:51 2024
 Response via : Initial Calibration
 Integrator: ChemStation

Volume Inj. : 2 µl
 Signal #1 Phase : ZB-MR1 Signal #2 Phase: ZB-MR2
 Signal #1 Info : 30Mx0.32mmx 0.50µ Signal #2 Info : 30M x 0.32mm x 0.25µm

Compound	RT#1	RT#2	Resp#1	Resp#2	ng/ml	ng/ml

System Monitoring Compounds						
1) SA Tetrachlo...	4.451	3.713	182.7E6	57124246	24.361	21.385
2) SA Decachlor...	10.194	8.737	115.0E6	44881072	23.265	22.438

Target Compounds

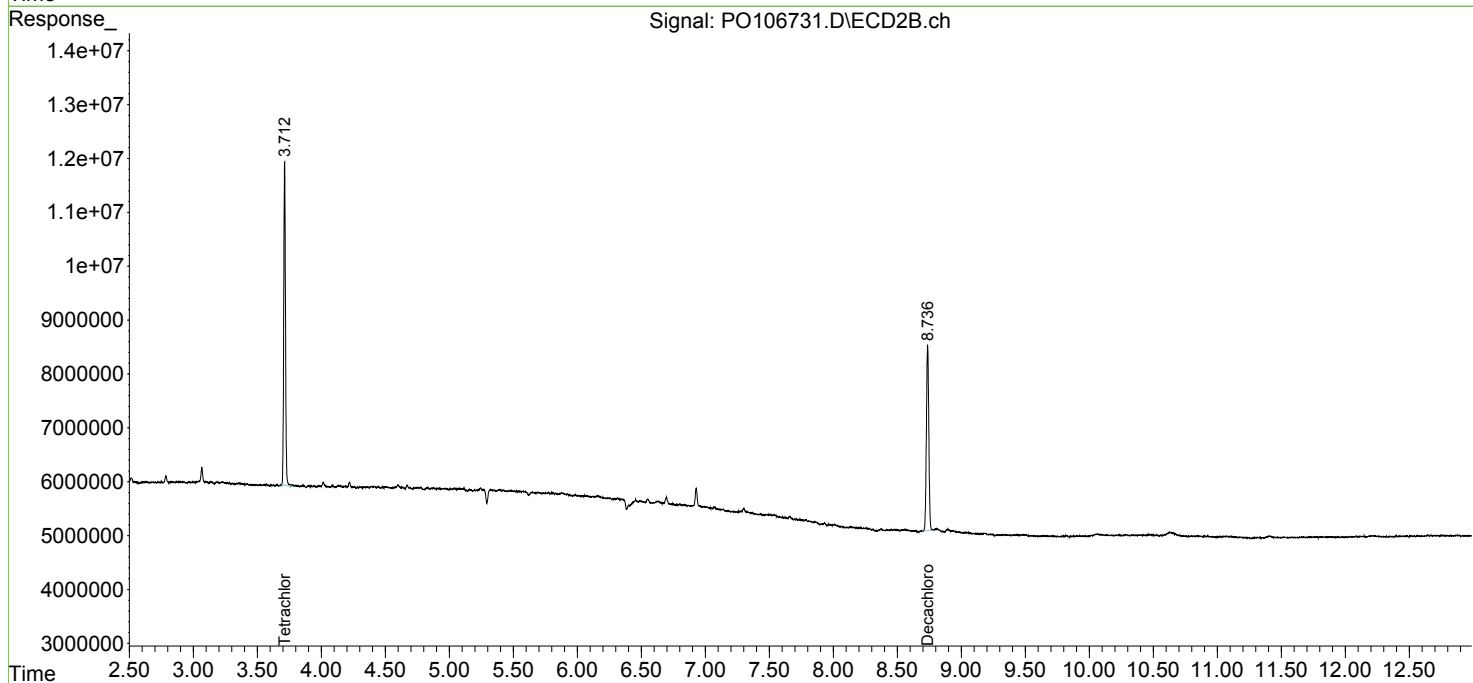
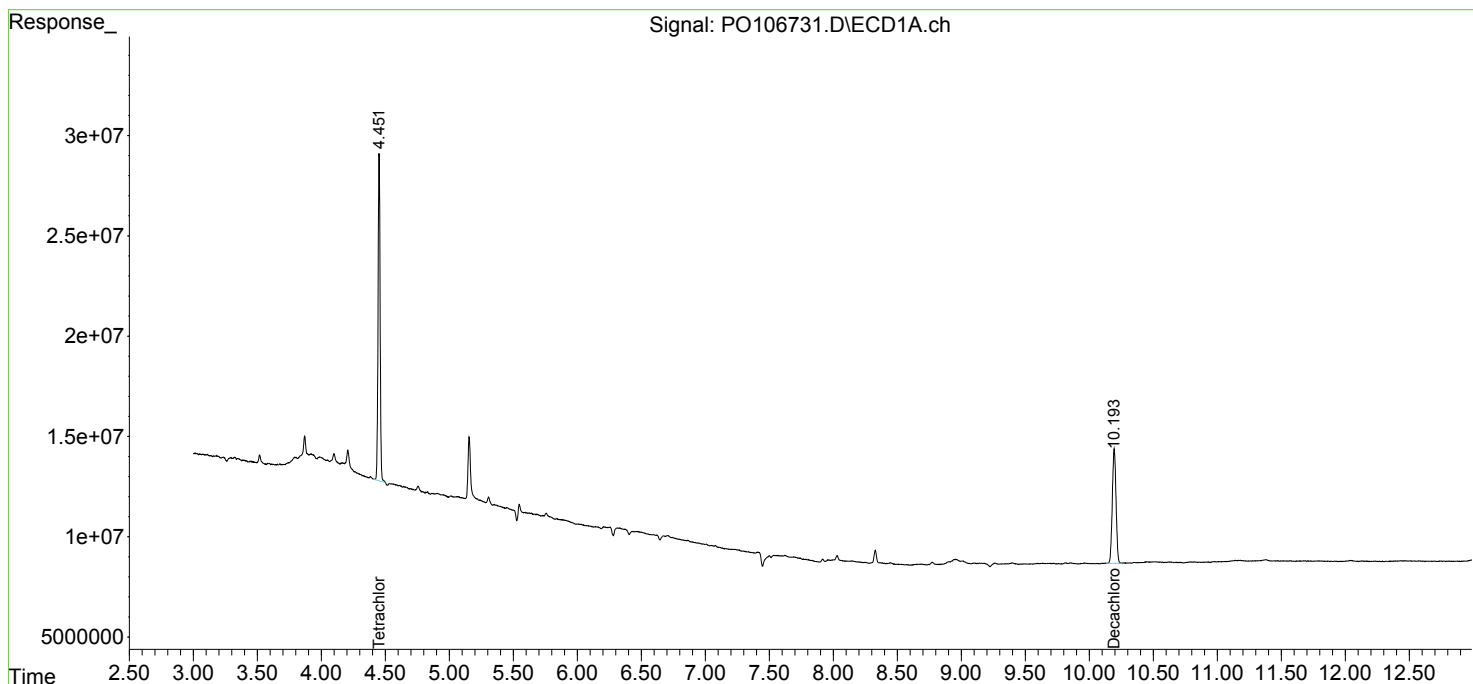
 (f)=RT Delta > 1/2 Window (#)=Amounts differ by > 25% (m)=manual int.

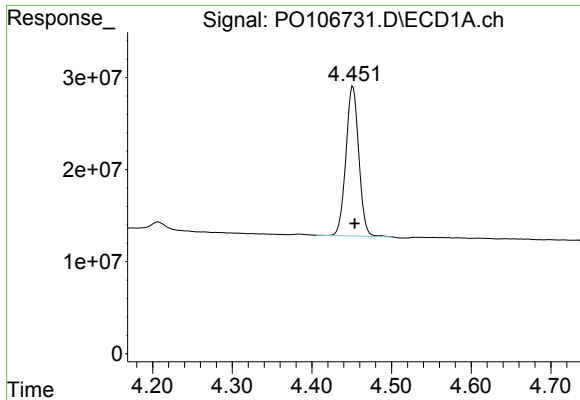
Data Path : Z:\pestpcbsrv\HPCHEM1\ECD_O\Data\P0092024\
 Data File : P0106731.D
 Signal(s) : Signal #1: ECD1A.ch Signal #2: ECD2B.ch
 Acq On : 20 Sep 2024 14:59
 Operator : YP/AJ
 Sample : P4120-09
 Misc :
 ALS Vial : 16 Sample Multiplier: 1

Instrument :
 ECD_O
 ClientSampleId :
 COMP-1

Integration File signal 1: autoint1.e
 Integration File signal 2: autoint2.e
 Quant Time: Sep 21 03:53:32 2024
 Quant Method : Z:\pestpcbsrv\HPCHEM1\ECD_O\methods\P0090924.M
 Quant Title : GC EXTRACTABLES
 QLast Update : Tue Sep 10 09:57:51 2024
 Response via : Initial Calibration
 Integrator: ChemStation

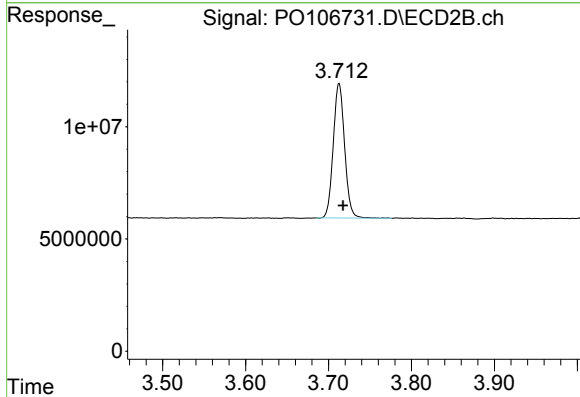
Volume Inj. : 2 µl
 Signal #1 Phase : ZB-MR1 Signal #2 Phase: ZB-MR2
 Signal #1 Info : 30Mx0.32mmx 0.50µ Signal #2 Info : 30M x 0.32mm x 0.25µm



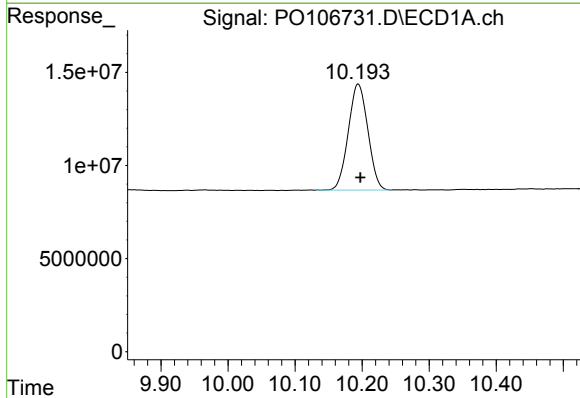


#1 Tetrachloro-m-xylene
 R.T.: 4.451 min
 Delta R.T.: -0.003 min
 Response: 182737711
 Conc: 24.36 ng/ml

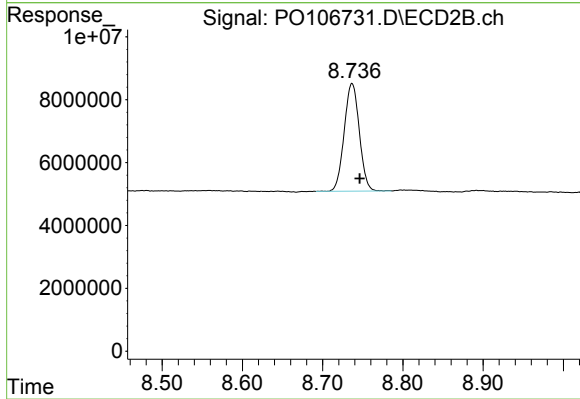
Instrument :
 ECD_O
 ClientSampleId :
 COMP-1



#1 Tetrachloro-m-xylene
 R.T.: 3.713 min
 Delta R.T.: -0.005 min
 Response: 57124246
 Conc: 21.39 ng/ml



#2 Decachlorobiphenyl
 R.T.: 10.194 min
 Delta R.T.: -0.003 min
 Response: 114993010
 Conc: 23.26 ng/ml



#2 Decachlorobiphenyl
 R.T.: 8.737 min
 Delta R.T.: -0.010 min
 Response: 44881072
 Conc: 22.44 ng/ml