

Data Path : Z:\pestpcbsrv\HPCHEM1\ECD\_0\Data\P0092024\  
 Data File : P0106743.D  
 Signal(s) : Signal #1: ECD1A.ch Signal #2: ECD2B.ch  
 Acq On : 20 Sep 2024 18:34  
 Operator : YP/AJ  
 Sample : P4125-01  
 Misc :  
 ALS Vial : 23 Sample Multiplier: 1

**Instrument :**  
 ECD\_0  
**ClientSampleId :**  
 PL-01-09192024

**Manual Integrations**  
**APPROVED**  
 Reviewed By :Yogesh Patel 09/23/2024  
 Supervised By :Ankita Jodhani 09/23/2024

Integration File signal 1: autoint1.e  
 Integration File signal 2: autoint2.e  
 Quant Time: Sep 21 04:04:33 2024  
 Quant Method : Z:\pestpcbsrv\HPCHEM1\ECD\_0\methods\P0090924.M  
 Quant Title : GC EXTRACTABLES  
 QLast Update : Tue Sep 10 09:57:51 2024  
 Response via : Initial Calibration  
 Integrator: ChemStation

Volume Inj. : 2 µl  
 Signal #1 Phase : ZB-MR1 Signal #2 Phase: ZB-MR2  
 Signal #1 Info : 30Mx0.32mmx 0.50µ Signal #2 Info : 30M x 0.32mm x 0.25µm

Compound	RT#1	RT#2	Resp#1	Resp#2	ng/ml	ng/ml
-----						
System Monitoring Compounds						
1) SA Tetrachlo...	4.449	3.713	104.8E6	44188194	13.968m	16.542m
2) SA Decachlor...	10.194	8.736	98565129	33420363	19.941	16.708m
Target Compounds						
16) L4 AR-1242-1	5.613	4.800	36647101	14689873	182.958m	198.936
17) L4 AR-1242-2	5.636	4.819	53094454	19426686	192.713m	198.477
18) L4 AR-1242-3	5.698	4.995	36912704	11025495	215.189m	205.510
19) L4 AR-1242-4	5.797	5.081	28863833	10637813	207.347m	200.566
20) L4 AR-1242-5	6.530	5.604	25131140	12231943	180.697m	175.136
-----						

(f)=RT Delta > 1/2 Window (#)=Amounts differ by > 25% (m)=manual int.

Data Path : Z:\pestpcbsrv\HPCHEM1\ECD\_O\Data\PO092024\  
 Data File : PO106743.D  
 Signal(s) : Signal #1: ECD1A.ch Signal #2: ECD2B.ch  
 Acq On : 20 Sep 2024 18:34  
 Operator : YP/AJ  
 Sample : P4125-01  
 Misc :  
 ALS Vial : 23 Sample Multiplier: 1

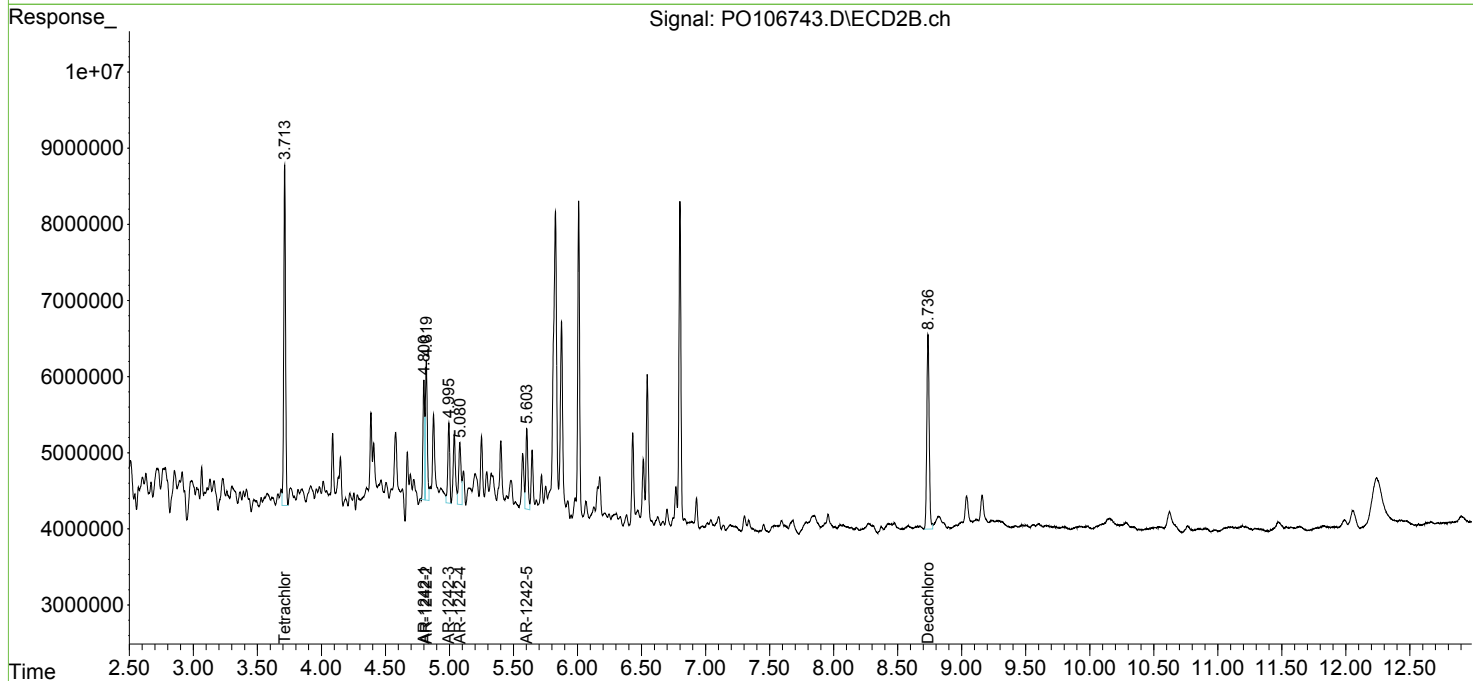
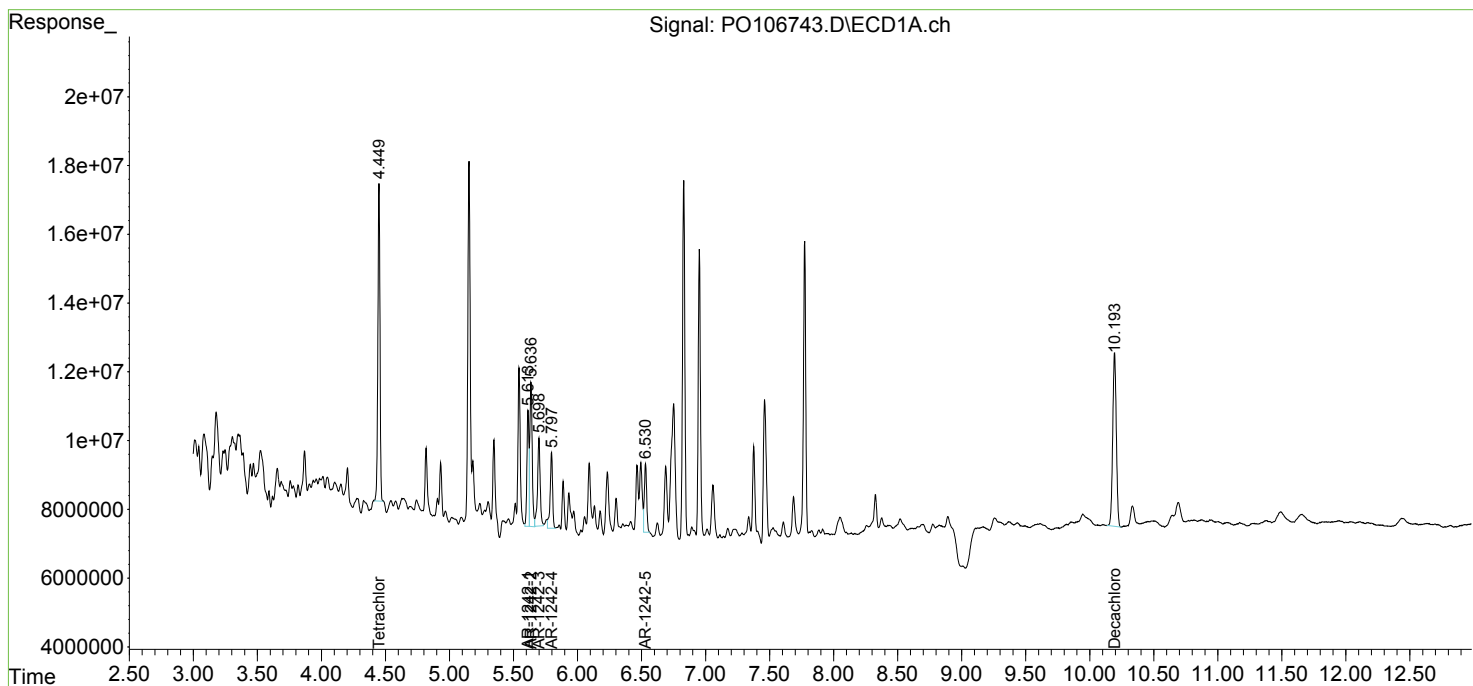
Instrument :  
 ECD\_O  
 ClientSampleId :  
 PL-01-09192024

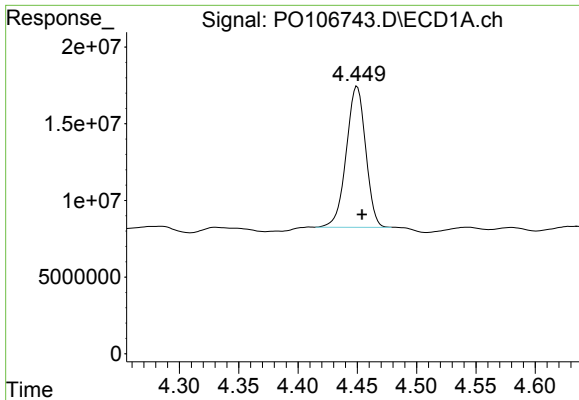
Manual Integrations  
 APPROVED

Reviewed By :Yogesh Patel 09/23/2024  
 Supervised By :Ankita Jodhani 09/23/2024

Integration File signal 1: autoint1.e  
 Integration File signal 2: autoint2.e  
 Quant Time: Sep 21 04:04:33 2024  
 Quant Method : Z:\pestpcbsrv\HPCHEM1\ECD\_O\methods\PO090924.M  
 Quant Title : GC EXTRACTABLES  
 QLast Update : Tue Sep 10 09:57:51 2024  
 Response via : Initial Calibration  
 Integrator: ChemStation

Volume Inj. : 2 µl  
 Signal #1 Phase : ZB-MR1 Signal #2 Phase: ZB-MR2  
 Signal #1 Info : 30Mx0.32mmx 0.50µ Signal #2 Info : 30M x 0.32mm x 0.25µm





#1 Tetrachloro-m-xylene

R.T.: 4.449 min  
 Delta R.T.: -0.005 min  
 Response: 104775616  
 Conc: 13.97 ng/ml

Instrument :

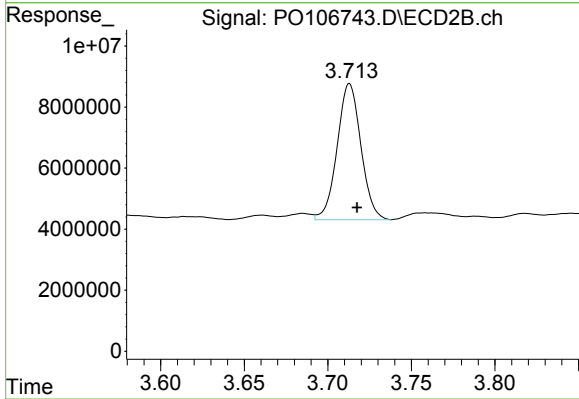
ECD\_O

ClientSampleId :

PL-01-09192024

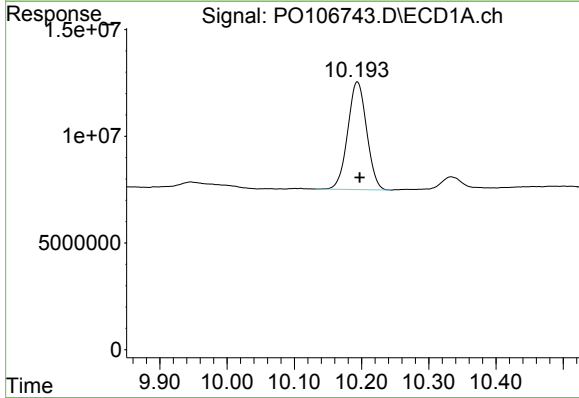
Manual Integrations  
 APPROVED

Reviewed By :Yogesh Patel 09/23/2024  
 Supervised By :Ankita Jodhani 09/23/2024



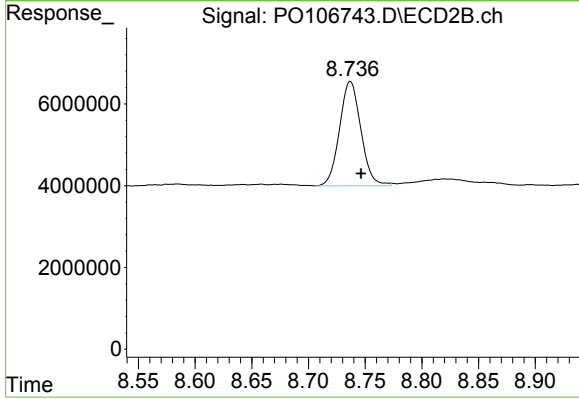
#1 Tetrachloro-m-xylene

R.T.: 3.713 min  
 Delta R.T.: -0.005 min  
 Response: 44188194  
 Conc: 16.54 ng/ml m



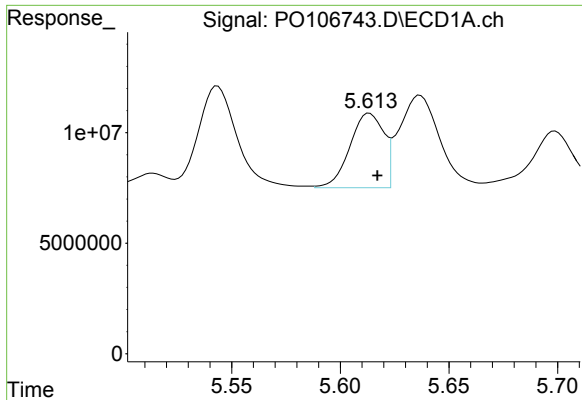
#2 Decachlorobiphenyl

R.T.: 10.194 min  
 Delta R.T.: -0.003 min  
 Response: 98565129  
 Conc: 19.94 ng/ml



#2 Decachlorobiphenyl

R.T.: 8.736 min  
 Delta R.T.: -0.010 min  
 Response: 33420363  
 Conc: 16.71 ng/ml m



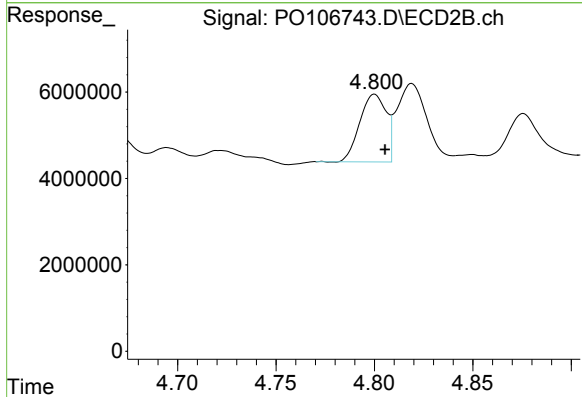
#16 AR-1242-1

R.T.: 5.613 min  
 Delta R.T.: -0.004 min  
 Response: 36647101  
 Conc: 182.96 ng/ml

Instrument :  
 ECD\_O  
 ClientSampleId :  
 PL-01-09192024

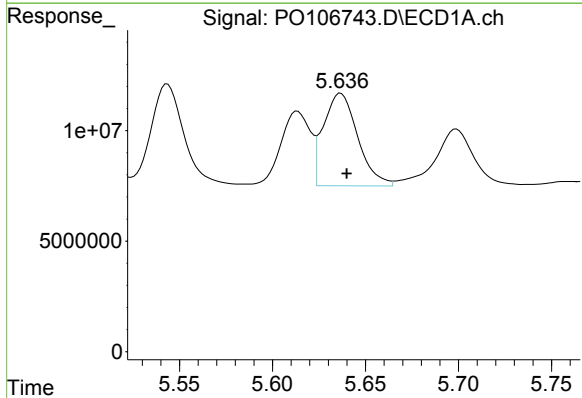
Manual Integrations  
 APPROVED

Reviewed By :Yogesh Patel 09/23/2024  
 Supervised By :Ankita Jodhani 09/23/2024



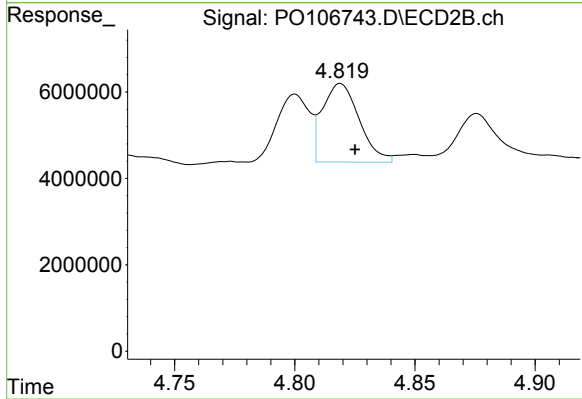
#16 AR-1242-1

R.T.: 4.800 min  
 Delta R.T.: -0.005 min  
 Response: 14689873  
 Conc: 198.94 ng/ml



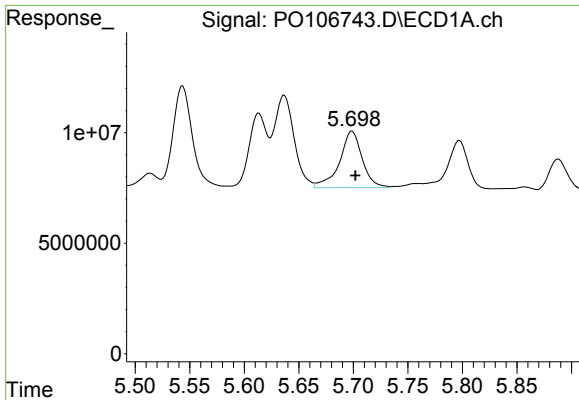
#17 AR-1242-2

R.T.: 5.636 min  
 Delta R.T.: -0.004 min  
 Response: 53094454  
 Conc: 192.71 ng/ml m



#17 AR-1242-2

R.T.: 4.819 min  
 Delta R.T.: -0.006 min  
 Response: 19426686  
 Conc: 198.48 ng/ml



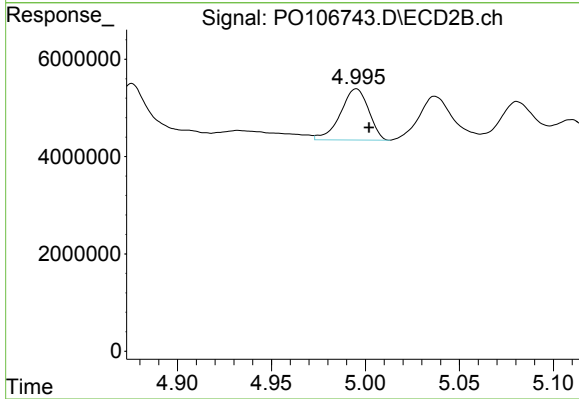
#18 AR-1242-3

R.T.: 5.698 min  
 Delta R.T.: -0.004 min  
 Response: 36912704  
 Conc: 215.19 ng/ml

Instrument :  
 ECD\_O  
 ClientSampleId :  
 PL-01-09192024

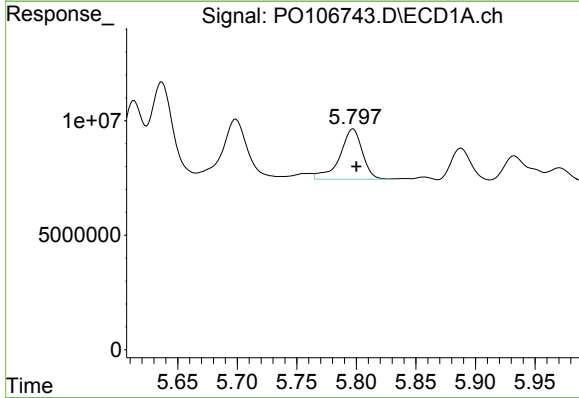
Manual Integrations  
 APPROVED

Reviewed By :Yogesh Patel 09/23/2024  
 Supervised By :Ankita Jodhani 09/23/2024



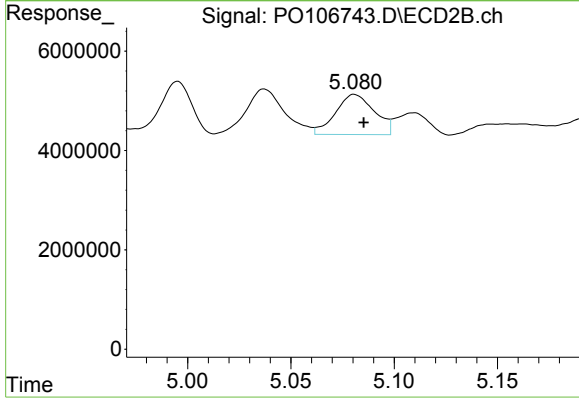
#18 AR-1242-3

R.T.: 4.995 min  
 Delta R.T.: -0.007 min  
 Response: 11025495  
 Conc: 205.51 ng/ml



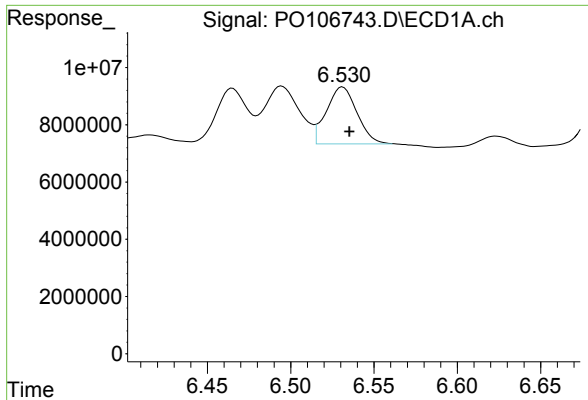
#19 AR-1242-4

R.T.: 5.797 min  
 Delta R.T.: -0.003 min  
 Response: 28863833  
 Conc: 207.35 ng/ml m



#19 AR-1242-4

R.T.: 5.081 min  
 Delta R.T.: -0.004 min  
 Response: 10637813  
 Conc: 200.57 ng/ml



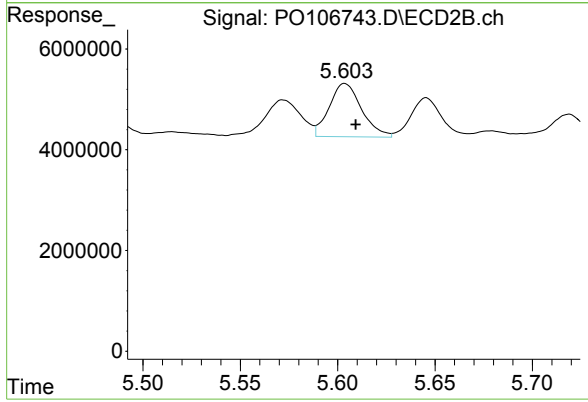
#20 AR-1242-5

R.T.: 6.530 min  
 Delta R.T.: -0.005 min  
 Response: 25131140  
 Conc: 180.70 ng/ml

Instrument :  
 ECD\_O  
 ClientSampleId :  
 PL-01-09192024

Manual Integrations  
 APPROVED

Reviewed By :Yogesh Patel 09/23/2024  
 Supervised By :Ankita Jodhani 09/23/2024



#20 AR-1242-5

R.T.: 5.604 min  
 Delta R.T.: -0.006 min  
 Response: 12231943  
 Conc: 175.14 ng/ml