

Data Path : Z:\pestpcbsrv\HPCHEM1\ECD_0\Data\P0092024\
 Data File : P0106749.D
 Signal(s) : Signal #1: ECD1A.ch Signal #2: ECD2B.ch
 Acq On : 21 Sep 2024 01:50
 Operator : YP/AJ
 Sample : AR1248CCC500
 Misc :
 ALS Vial : 5 Sample Multiplier: 1

Instrument :
 ECD_0
ClientSampleId :
 AR1248CCC500

Manual Integrations
APPROVED
 Reviewed By :Yogesh Patel 09/23/2024
 Supervised By :Ankita Jodhani 09/23/2024

Integration File signal 1: autoint1.e
 Integration File signal 2: autoint2.e
 Quant Time: Sep 21 04:09:18 2024
 Quant Method : Z:\pestpcbsrv\HPCHEM1\ECD_0\methods\P0090924.M
 Quant Title : GC EXTRACTABLES
 QLast Update : Tue Sep 10 09:57:51 2024
 Response via : Initial Calibration
 Integrator: ChemStation

Volume Inj. : 2 µl
 Signal #1 Phase : ZB-MR1 Signal #2 Phase: ZB-MR2
 Signal #1 Info : 30Mx0.32mmx 0.50µ Signal #2 Info : 30M x 0.32mm x 0.25µm

Compound	RT#1	RT#2	Resp#1	Resp#2	ng/ml	ng/ml

System Monitoring Compounds						
1) SA Tetrachlo...	4.451	3.713	398.7E6	142.1E6	53.153	53.187
2) SA Decachlor...	10.195	8.736	232.0E6	94994050	46.947	47.491
Target Compounds						
21) L5 AR-1248-1	5.615	4.799	80620420	27091781	510.499	468.287
22) L5 AR-1248-2	5.888	5.036	106.3E6	34979039	489.817	447.510
23) L5 AR-1248-3	6.092	5.078	118.9E6	37644108	497.818	458.025
24) L5 AR-1248-4	6.495	5.251	126.3E6	45484287	480.868	463.254m
25) L5 AR-1248-5	6.533	5.644	120.3E6	49973498	479.644	515.967

(f)=RT Delta > 1/2 Window (#)=Amounts differ by > 25% (m)=manual int.

Data Path : Z:\pestpcbsrv\HPCHEM1\ECD_O\Data\PO092024\
 Data File : PO106749.D
 Signal(s) : Signal #1: ECD1A.ch Signal #2: ECD2B.ch
 Acq On : 21 Sep 2024 01:50
 Operator : YP/AJ
 Sample : AR1248CCC500
 Misc :
 ALS Vial : 5 Sample Multiplier: 1

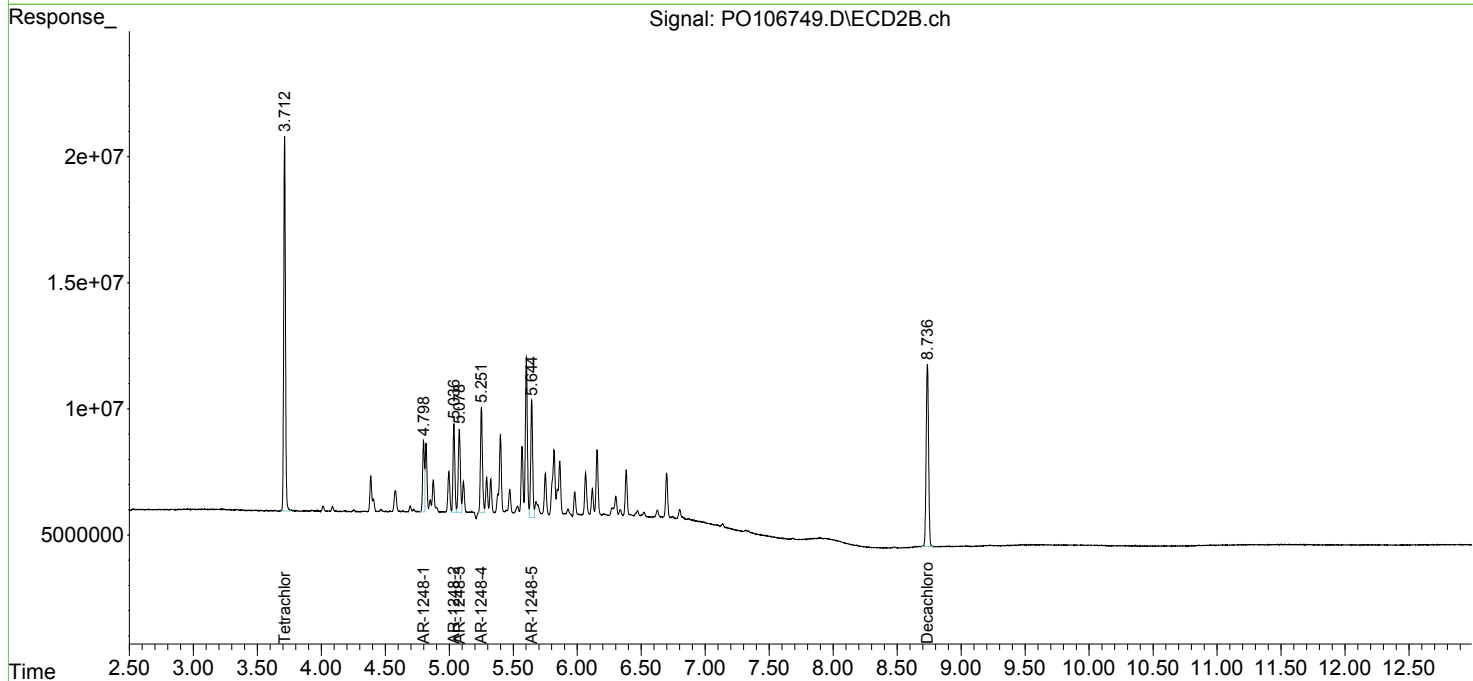
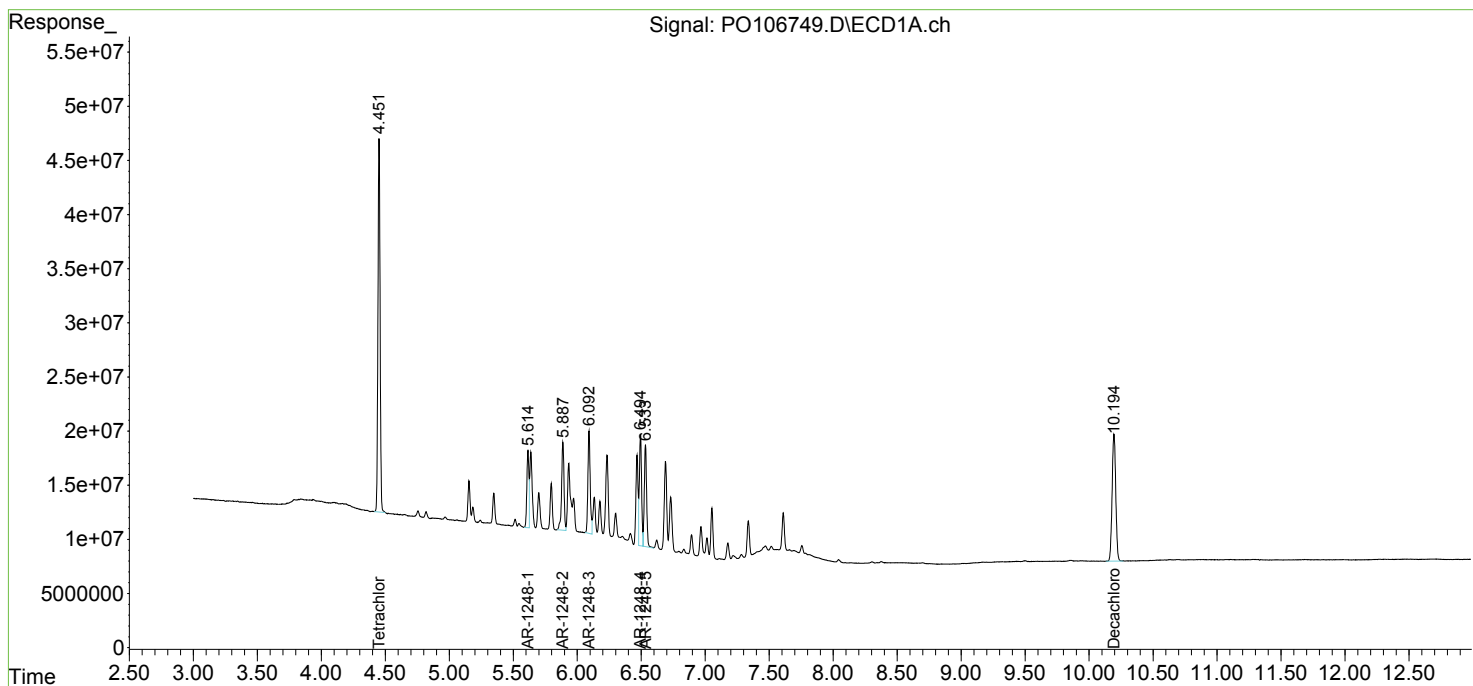
Instrument :
 ECD_O
 ClientSampleId :
 AR1248CCC500

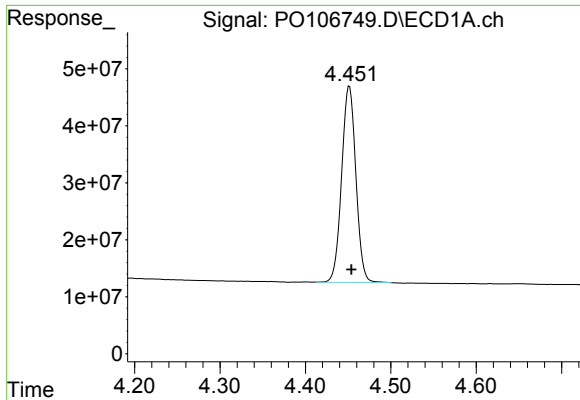
Manual Integrations
 APPROVED

Reviewed By :Yogesh Patel 09/23/2024
 Supervised By :Ankita Jodhani 09/23/2024

Integration File signal 1: autoint1.e
 Integration File signal 2: autoint2.e
 Quant Time: Sep 21 04:09:18 2024
 Quant Method : Z:\pestpcbsrv\HPCHEM1\ECD_O\methods\PO090924.M
 Quant Title : GC EXTRACTABLES
 QLast Update : Tue Sep 10 09:57:51 2024
 Response via : Initial Calibration
 Integrator: ChemStation

Volume Inj. : 2 µl
 Signal #1 Phase : ZB-MR1 Signal #2 Phase: ZB-MR2
 Signal #1 Info : 30Mx0.32mmx 0.50µ Signal #2 Info : 30M x 0.32mm x 0.25µm





#1 Tetrachloro-m-xylene
 R.T.: 4.451 min
 Delta R.T.: -0.003 min
 Response: 398719325
 Conc: 53.15 ng/ml

Instrument :

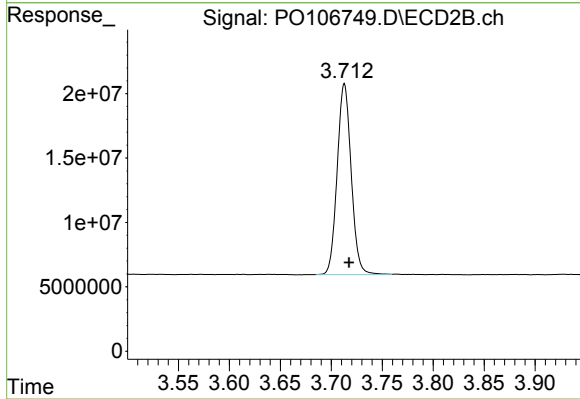
ECD_O

ClientSampleId :

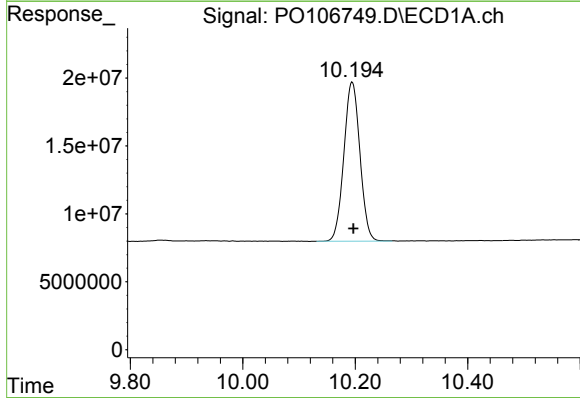
AR1248CCC500

Manual Integrations
 APPROVED

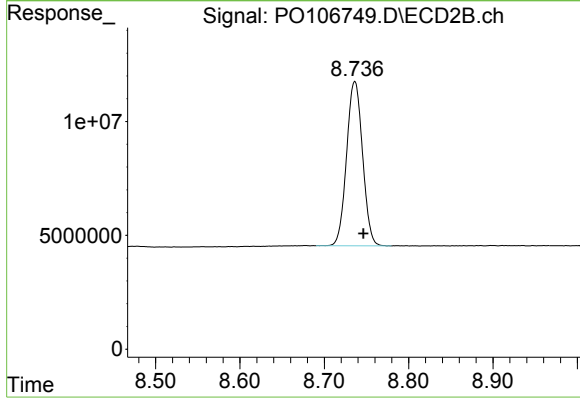
Reviewed By :Yogesh Patel 09/23/2024
 Supervised By :Ankita Jodhani 09/23/2024



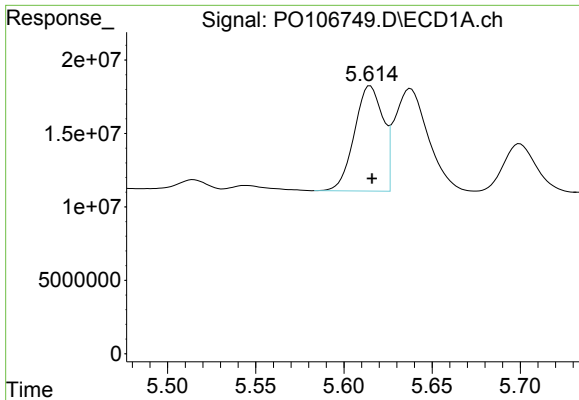
#1 Tetrachloro-m-xylene
 R.T.: 3.713 min
 Delta R.T.: -0.005 min
 Response: 142074609
 Conc: 53.19 ng/ml



#2 Decachlorobiphenyl
 R.T.: 10.195 min
 Delta R.T.: -0.003 min
 Response: 232049208
 Conc: 46.95 ng/ml



#2 Decachlorobiphenyl
 R.T.: 8.736 min
 Delta R.T.: -0.010 min
 Response: 94994050
 Conc: 47.49 ng/ml

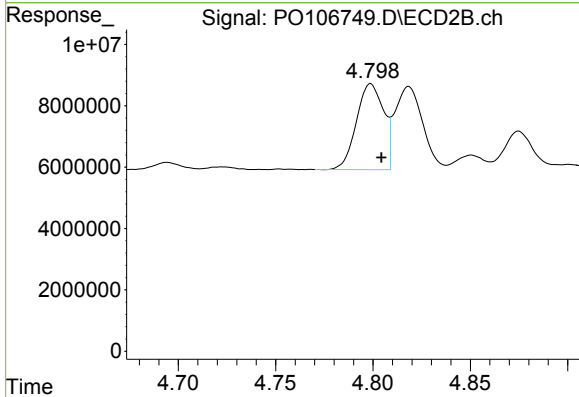


#21 AR-1248-1

R.T.: 5.615 min
 Delta R.T.: -0.001 min
 Response: 80620420
 Conc: 510.50 ng/ml

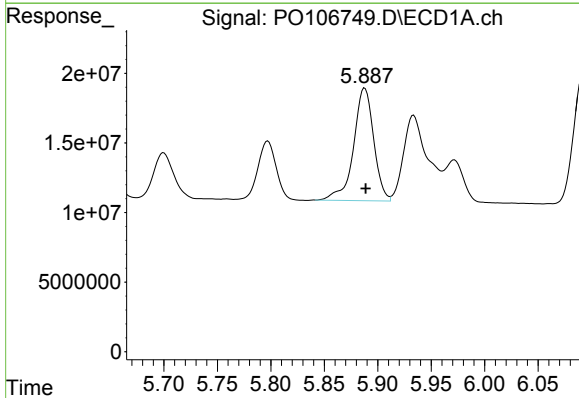
Instrument : ECD_O
 ClientSampleId : AR1248CCC500

Manual Integrations
APPROVED
 Reviewed By :Yogesh Patel 09/23/2024
 Supervised By :Ankita Jodhani 09/23/2024



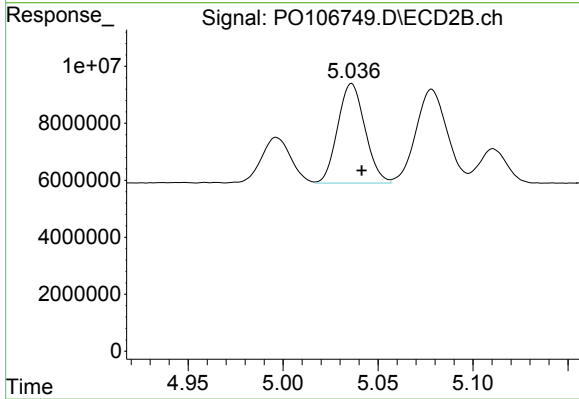
#21 AR-1248-1

R.T.: 4.799 min
 Delta R.T.: -0.006 min
 Response: 27091781
 Conc: 468.29 ng/ml



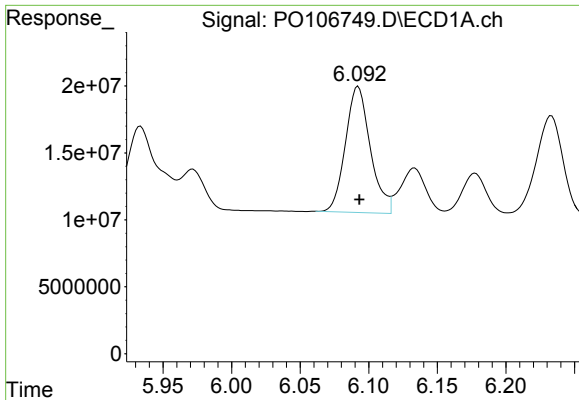
#22 AR-1248-2

R.T.: 5.888 min
 Delta R.T.: 0.000 min
 Response: 106255131
 Conc: 489.82 ng/ml



#22 AR-1248-2

R.T.: 5.036 min
 Delta R.T.: -0.005 min
 Response: 34979039
 Conc: 447.51 ng/ml



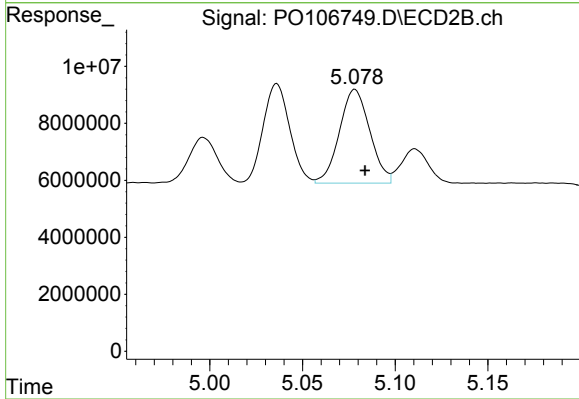
#23 AR-1248-3

R.T.: 6.092 min
 Delta R.T.: 0.000 min
 Response: 118874671
 Conc: 497.82 ng/ml

Instrument :
 ECD_O
 ClientSampleId :
 AR1248CCC500

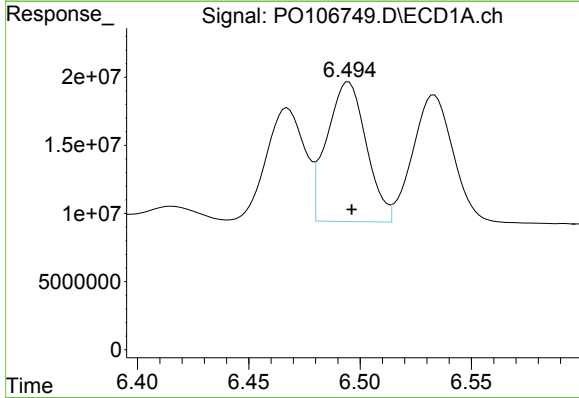
Manual Integrations
 APPROVED

Reviewed By :Yogesh Patel 09/23/2024
 Supervised By :Ankita Jodhani 09/23/2024



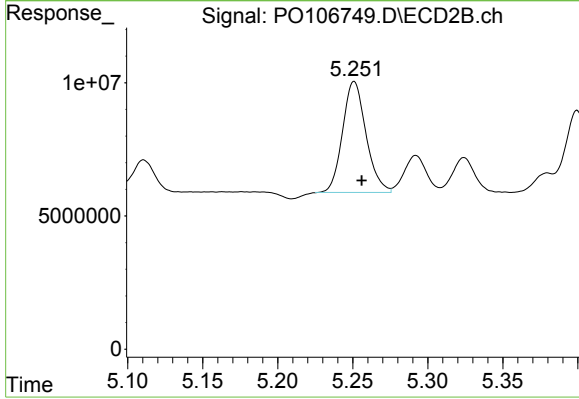
#23 AR-1248-3

R.T.: 5.078 min
 Delta R.T.: -0.006 min
 Response: 37644108
 Conc: 458.02 ng/ml



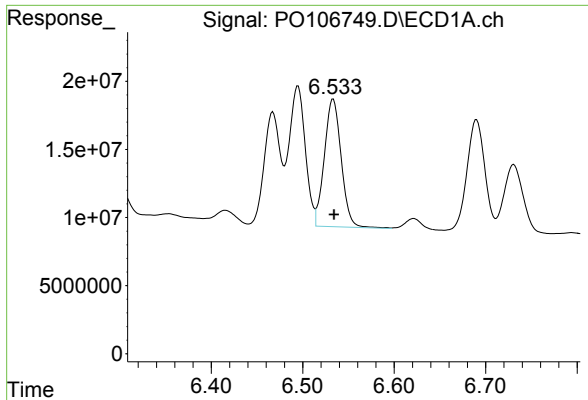
#24 AR-1248-4

R.T.: 6.495 min
 Delta R.T.: -0.001 min
 Response: 126271613
 Conc: 480.87 ng/ml



#24 AR-1248-4

R.T.: 5.251 min
 Delta R.T.: -0.006 min
 Response: 45484287
 Conc: 463.25 ng/ml m



#25 AR-1248-5

R.T.: 6.533 min
 Delta R.T.: -0.001 min
 Response: 120282995
 Conc: 479.64 ng/ml

Instrument :

ECD_O

ClientSampleId :

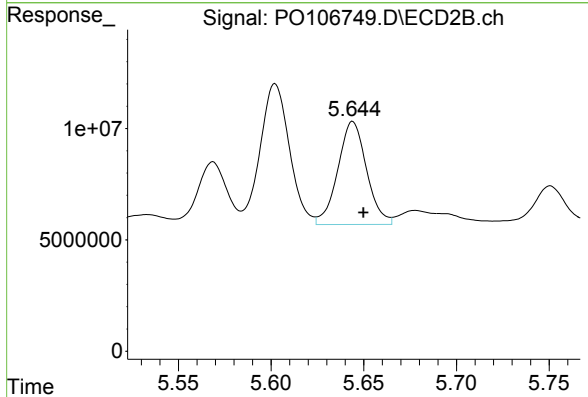
AR1248CCC500

Manual Integrations

APPROVED

Reviewed By :Yogesh Patel 09/23/2024

Supervised By :Ankita Jodhani 09/23/2024



#25 AR-1248-5

R.T.: 5.644 min
 Delta R.T.: -0.006 min
 Response: 49973498
 Conc: 515.97 ng/ml