

Data Path : P:\HPCHEM1\ECD\_O\Data\PO092115\  
 Data File : PO024752.D  
 Signal(s) : Signal #1: ECD1A.CH Signal #2: ECD2B.CH  
 Acq On : 21 Sep 2015 15:15  
 Operator : IZ/UA  
 Sample : PB85674BL  
 Misc :  
 ALS Vial : 8 Sample Multiplier: 1

**Instrument :**  
 ECD\_O  
**ClientSampled :**  
 PB85674BL

**Manual Integrations**  
**APPROVED**  
 ugo  
 9/22/2015 11:54:14 AM

Integration File signal 1: autoint1.e  
 Integration File signal 2: autoint2.e  
 Quant Time: Sep 22 05:07:08 2015  
 Quant Method : P:\HPCHEM1\ECD\_O\methods\PO091115.M  
 Quant Title : GC EXTRACTABLES  
 QLast Update : Sat Sep 12 04:39:58 2015  
 Response via : Initial Calibration  
 Integrator: ChemStation 6890 Scale Mode: Small noise peaks clipped

Volume Inj. : 2 µl  
 Signal #1 Phase : ZB-MR1 Signal #2 Phase: ZB-MR2  
 Signal #1 Info : 30Mx0.32mmx 0.50µ Signal #2 Info : 30M x 0.32mm x 0.25µm

Compound	RT#1	RT#2	Resp#1	Resp#2	ng/ml	ng/ml
-----						
System Monitoring Compounds						
1) SA Tetrachlo...	4.116	3.225	4305368	5346342	19.409	19.002
2) SA Decachlor...	9.643	8.021	2143165	4206485	17.590m	15.559m

Target Compounds

-----  
 (f)=RT Delta > 1/2 Window (#)=Amounts differ by > 25% (m)=manual int.

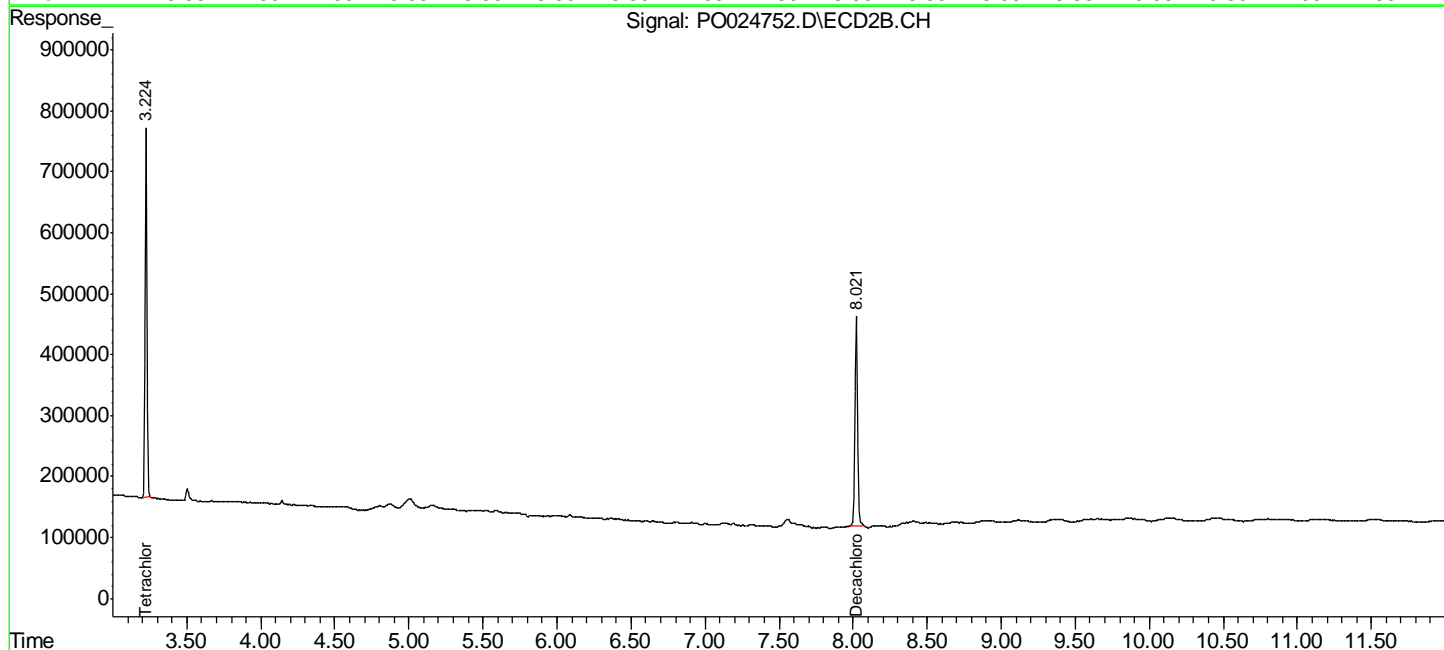
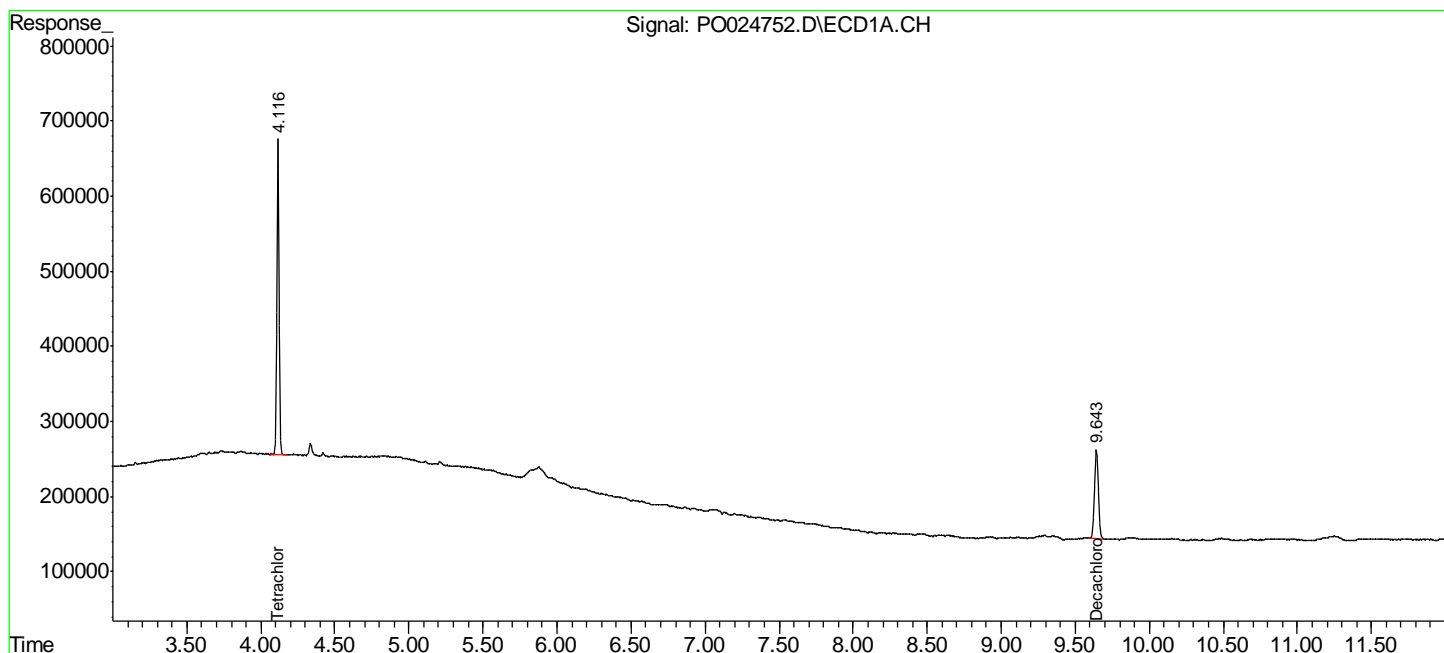
Data Path : P:\HPCHEM1\ECD\_O\Data\PO092115\  
 Data File : PO024752.D  
 Signal(s) : Signal #1: ECD1A.CH Signal #2: ECD2B.CH  
 Acq On : 21 Sep 2015 15:15  
 Operator : IZ/UA  
 Sample : PB85674BL  
 Misc :  
 ALS Vial : 8 Sample Multiplier: 1

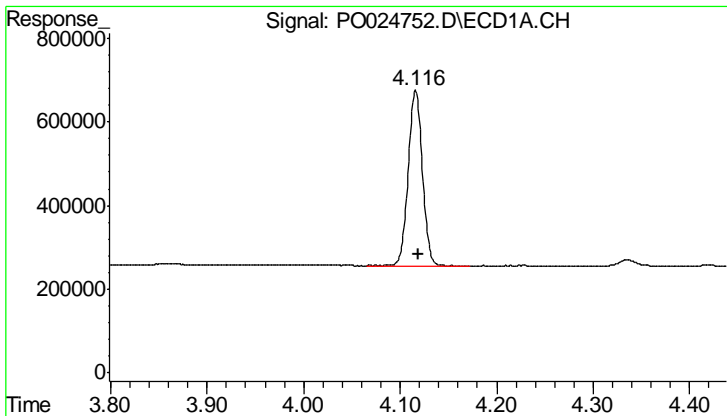
**Instrument :**  
 ECD\_O  
**Client Sampled :**  
 PB85674BL

**Manual Integrations**  
**APPROVED**  
 ugo  
 9/22/2015 11:54:14 AM

Integration File signal 1: autoint1.e  
 Integration File signal 2: autoint2.e  
 Quant Time: Sep 22 05:07:08 2015  
 Quant Method : P:\HPCHEM1\ECD\_O\methods\PO091115.M  
 Quant Title : GC EXTRACTABLES  
 QLast Update : Sat Sep 12 04:39:58 2015  
 Response via : Initial Calibration  
 Integrator: ChemStation 6890 Scale Mode: Small noise peaks clipped

Volume Inj. : 2 µl  
 Signal #1 Phase : ZB-MR1 Signal #2 Phase: ZB-MR2  
 Signal #1 Info : 30Mx0.32mmx 0.50µ Signal #2 Info : 30M x 0.32mm x 0.25µm





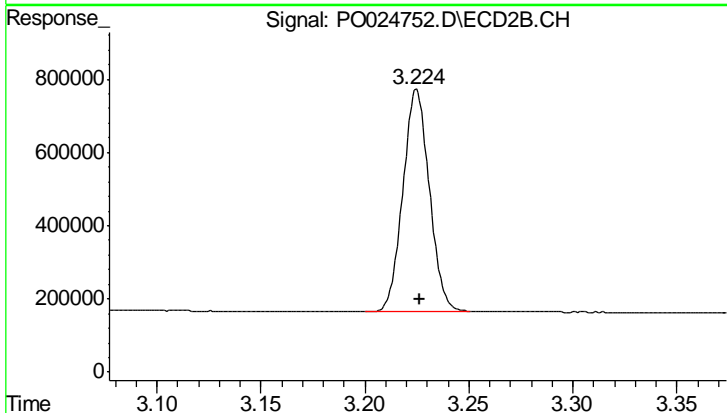
#1 Tetrachloro-m-xylene

R.T.: 4.116 min  
 Delta R.T.: -0.003 min  
 Response: 4305368  
 Conc: 19.41 ng/ml

Instrument :  
 ECD\_O  
 ClientSampled :  
 PB85674BL

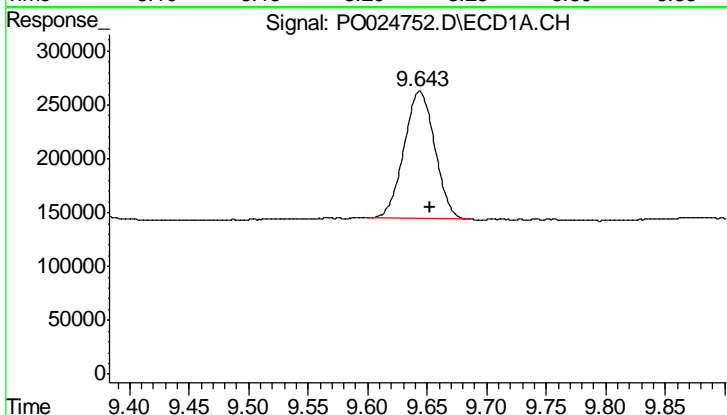
Manual Integrations  
 APPROVED

ugo  
 9/22/2015 11:54:14 AM



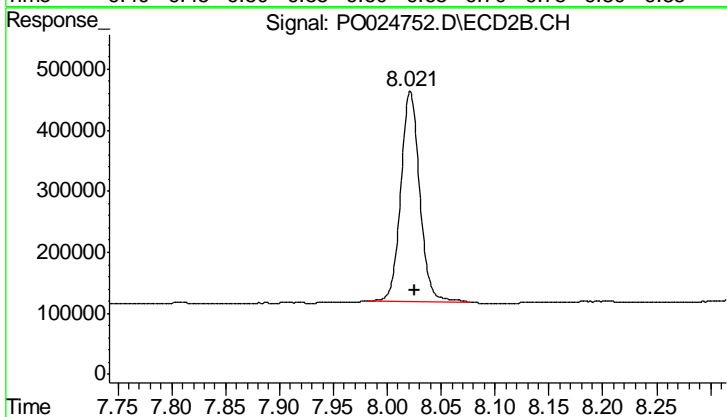
#1 Tetrachloro-m-xylene

R.T.: 3.225 min  
 Delta R.T.: -0.001 min  
 Response: 5346342  
 Conc: 19.00 ng/ml



#2 Decachlorobiphenyl

R.T.: 9.643 min  
 Delta R.T.: -0.009 min  
 Response: 2143165  
 Conc: 17.59 ng/ml m



#2 Decachlorobiphenyl

R.T.: 8.021 min  
 Delta R.T.: -0.005 min  
 Response: 4206485  
 Conc: 15.56 ng/ml m