

Data Path : Z:\pestpcbsrv\HPCHEM1\ECD\_0\Data\P0092120\  
 Data File : P0071509.D  
 Signal(s) : Signal #1: ECD1A.CH Signal #2: ECD2B.CH  
 Acq On : 21 Sep 2020 16:54  
 Operator : DD\AJ  
 Sample : L4059-03  
 Misc :  
 ALS Vial : 26 Sample Multiplier: 1

Instrument :  
 ECD\_0  
 ClientSampleId :  
 PAV-B33-091720-0-10

Integration File signal 1: autoint1.e  
 Integration File signal 2: autoint2.e  
 Quant Time: Sep 21 17:15:30 2020  
 Quant Method : Z:\pestpcbsrv\HPCHEM1\ECD\_0\methods\P0090920.M  
 Quant Title : GC EXTRACTABLES  
 QLast Update : Wed Sep 09 16:04:54 2020  
 Response via : Initial Calibration  
 Integrator: ChemStation 6890 Scale Mode: Small noise peaks clipped

Volume Inj. : 2 µl  
 Signal #1 Phase : ZB-MR1 Signal #2 Phase: ZB-MR2  
 Signal #1 Info : 30Mx0.32mmx 0.50µ Signal #2 Info : 30M x 0.32mm x 0.25µm

Compound	RT#1	RT#2	Resp#1	Resp#2	ng/ml	ng/ml
-----						
System Monitoring Compounds						
1) SA Tetrachlo...	4.341	3.525	2261159	1162771	31.907	29.783
2) SA Decachlor...	9.951	8.702	2405637	1246858	25.797	22.636

Target Compounds

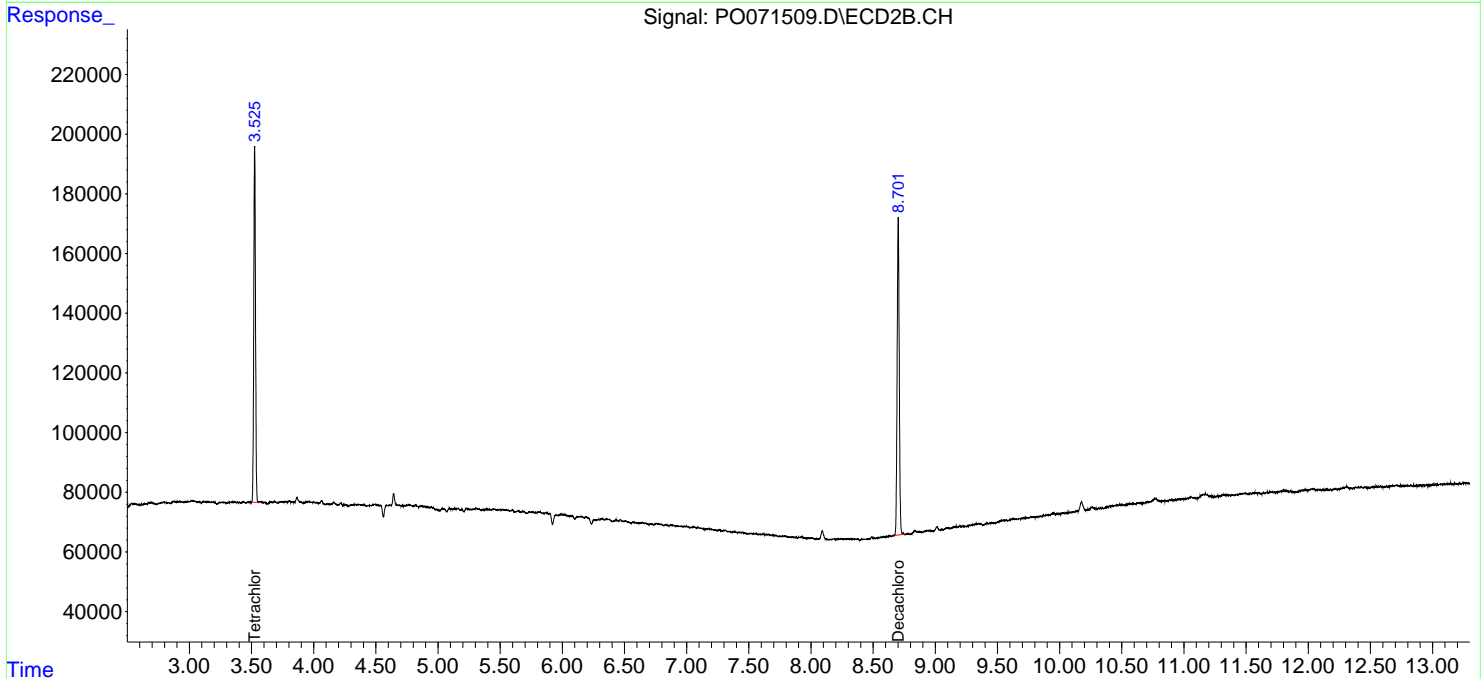
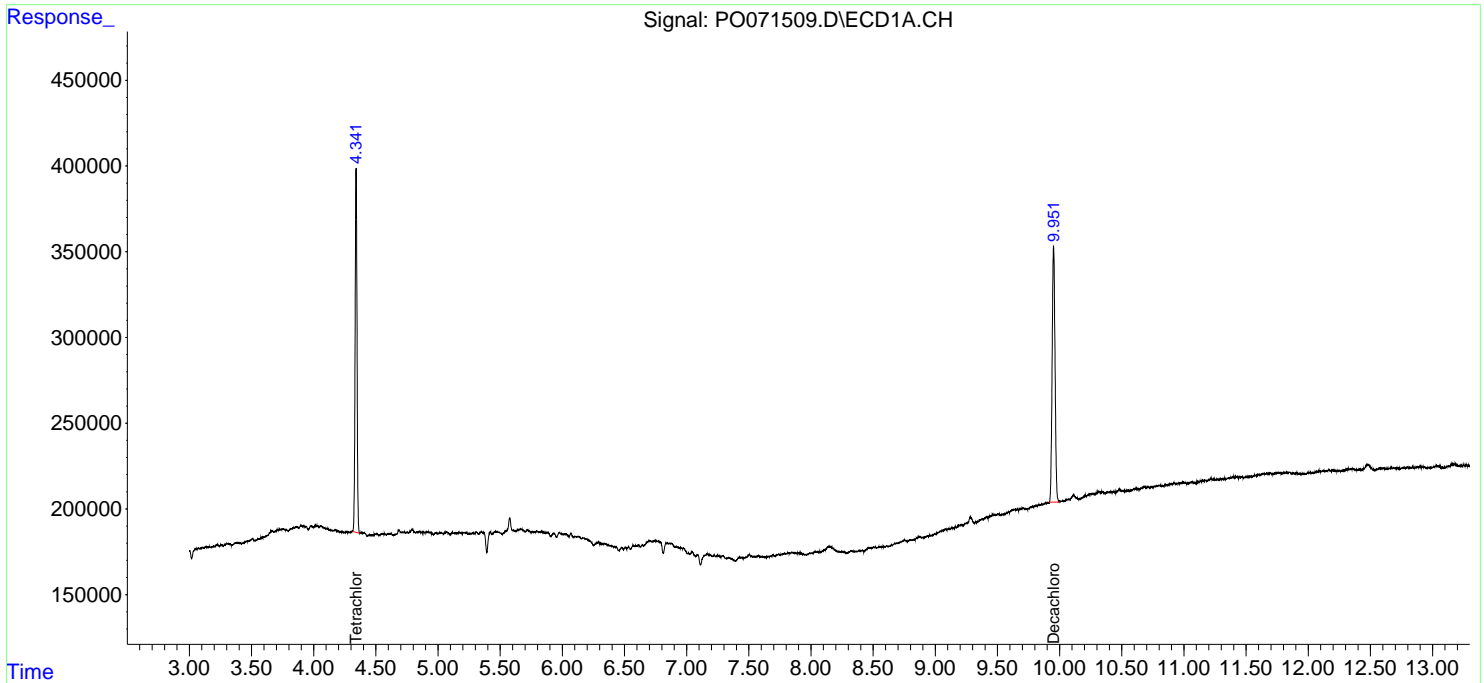
(f)=RT Delta > 1/2 Window (#)=Amounts differ by > 25% (m)=manual int.

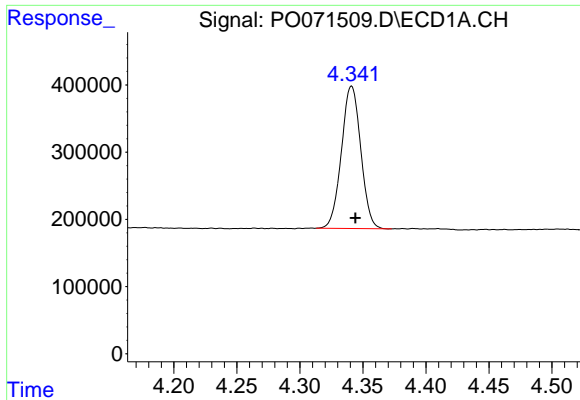
Data Path : Z:\pestpcbsrv\HPCHEM1\ECD\_O\Data\P0092120\  
 Data File : P0071509.D  
 Signal(s) : Signal #1: ECD1A.CH Signal #2: ECD2B.CH  
 Acq On : 21 Sep 2020 16:54  
 Operator : DD\AJ  
 Sample : L4059-03  
 Misc :  
 ALS Vial : 26 Sample Multiplier: 1

**Instrument :**  
 ECD\_O  
**ClientSampleId :**  
 PAV-B33-091720-0-10

Integration File signal 1: autoint1.e  
 Integration File signal 2: autoint2.e  
 Quant Time: Sep 21 17:15:30 2020  
 Quant Method : Z:\pestpcbsrv\HPCHEM1\ECD\_O\methods\P0090920.M  
 Quant Title : GC EXTRACTABLES  
 QLast Update : Wed Sep 09 16:04:54 2020  
 Response via : Initial Calibration  
 Integrator: ChemStation 6890 Scale Mode: Small noise peaks clipped

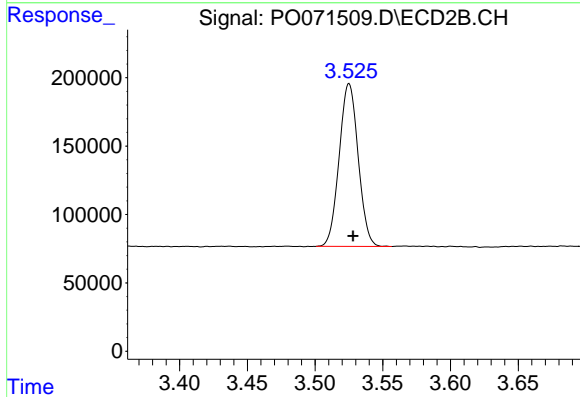
Volume Inj. : 2 µl  
 Signal #1 Phase : ZB-MR1 Signal #2 Phase: ZB-MR2  
 Signal #1 Info : 30Mx0.32mmx 0.50µ Signal #2 Info : 30M x 0.32mm x 0.25µm



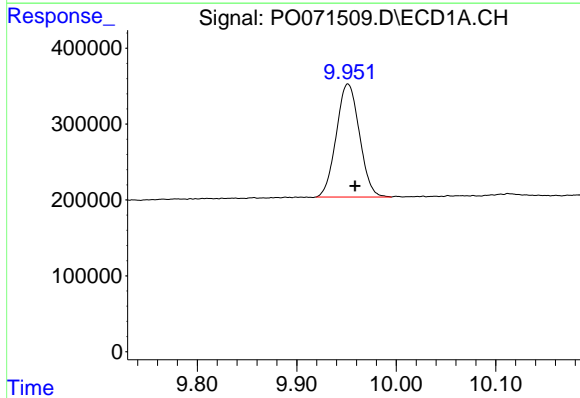


#1 Tetrachloro-m-xylene  
 R.T.: 4.341 min  
 Delta R.T.: -0.003 min  
 Response: 2261159  
 Conc: 31.91 ng/ml

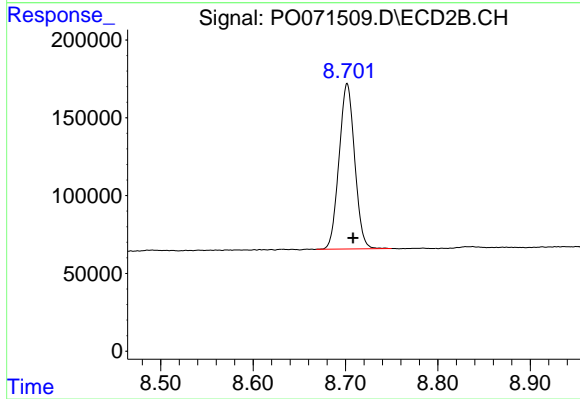
Instrument :  
 ECD\_O  
 ClientSampleId :  
 PAV-B33-091720-0-10



#1 Tetrachloro-m-xylene  
 R.T.: 3.525 min  
 Delta R.T.: -0.003 min  
 Response: 1162771  
 Conc: 29.78 ng/ml



#2 Decachlorobiphenyl  
 R.T.: 9.951 min  
 Delta R.T.: -0.007 min  
 Response: 2405637  
 Conc: 25.80 ng/ml



#2 Decachlorobiphenyl  
 R.T.: 8.702 min  
 Delta R.T.: -0.006 min  
 Response: 1246858  
 Conc: 22.64 ng/ml