

Data Path : Z:\pestpcbsrv\HPCHEM1\ECD_0\Data\P0092319\
 Data File : P0061275.D
 Signal(s) : Signal #1: ECD1A.CH Signal #2: ECD2B.CH
 Acq On : 23 Sep 2019 17:01
 Operator : SM/AJ
 Sample : K4969-01
 Misc :
 ALS Vial : 28 Sample Multiplier: 1

Instrument :
 ECD_0
 ClientSampleId :
 FK-PS-01-059

Integration File signal 1: autoint1.e
 Integration File signal 2: autoint2.e
 Quant Time: Sep 24 01:27:23 2019
 Quant Method : Z:\pestpcbsrv\HPCHEM1\ECD_0\methods\P0091319.M
 Quant Title : GC EXTRACTABLES
 QLast Update : Sat Sep 14 00:06:36 2019
 Response via : Initial Calibration
 Integrator: ChemStation 6890 Scale Mode: Small noise peaks clipped

Volume Inj. : 2 µl
 Signal #1 Phase : ZB-MR1 Signal #2 Phase: ZB-MR2
 Signal #1 Info : 30Mx0.32mmx 0.50µ Signal #2 Info : 30M x 0.32mm x 0.25µm

Compound	RT#1	RT#2	Resp#1	Resp#2	ng/ml	ng/ml

System Monitoring Compounds						
1) SA Tetrachlo...	4.371	3.531	633052	515679	17.207	18.468
2) SA Decachlor...	10.038	8.408	696661	515517	15.163	14.707
Target Compounds						
3) L1 AR-1016-1	5.465	4.604	110357	9214	69.053	7.453 #
4) L1 AR-1016-2	5.603	4.604	10516	9214	4.593	5.416
5) L1 AR-1016-3	5.603	4.776	10516	3736	7.325	3.854 #
6) L1 AR-1016-4	5.692	4.825	35785	9143	30.337	11.170 #
7) L1 AR-1016-5	0.000	4.975	0	41222	N.D.	39.358 #
9) L2 AR-1221-2	4.675	3.821	9521	7648	27.874	27.212
10) L2 AR-1221-3	4.757	3.895	34968	30486	33.014	36.727
11) L3 AR-1232-1	4.757	3.895	34968	30486	29.970	33.452
12) L3 AR-1232-2	5.249	4.604	11536	9214	17.791	9.125 #
13) L3 AR-1232-3	5.603	4.776	10516	3736	7.851	6.658
14) L3 AR-1232-4	5.692	4.877	35785	9555	52.077	18.297 #
15) L3 AR-1232-5	5.811	4.975	8617	41222	15.736	72.839 #
16) L4 AR-1242-1	5.465	4.604	110357	9214	92.471	10.121 #
17) L4 AR-1242-2	5.603	4.604	10516	9214	6.153	7.360
18) L4 AR-1242-3	5.603	4.776	10516	3736	9.711	5.229 #
19) L4 AR-1242-4	5.692	4.877	35785	9555	40.535	13.121 #
20) L4 AR-1242-5	6.423	5.371	60106	53478	53.633	54.024
21) L5 AR-1248-1	5.465	4.604	110357	9214	119.875	12.990 #
22) L5 AR-1248-2	5.811	4.825	8617	9143	6.444	9.463 #
23) L5 AR-1248-3	0.000	4.877	0	9555	N.D.	9.488 #
24) L5 AR-1248-4	6.398	4.975	48139	41222	26.423	34.325 #
25) L5 AR-1248-5	6.423	5.407	60106	5162	34.354	4.083 #
26) L6 AR-1254-1	6.398	5.371	48139	53478	24.986	25.948
27) L6 AR-1254-2	6.611	5.509	46433	9134	14.755	4.840 #
28) L6 AR-1254-3	6.976	5.904	48322	5564	13.720	1.750 #
29) L6 AR-1254-4	7.254	6.129	14057	7046	5.193	3.384 #
30) L6 AR-1254-5	7.672	6.539	24039	13889	8.152	4.388 #
31) L7 AR-1260-1	7.132	6.032	11373	6516	4.671	3.098 #
32) L7 AR-1260-2	7.385	6.215	32452	7228	10.734	2.802 #
33) L7 AR-1260-3	7.744	6.366	7907	8822	3.313	3.663
34) L7 AR-1260-4	7.966	6.785	31267	7678	11.176	3.587 #
35) L7 AR-1260-5	8.288	7.068	23858	13243	4.381	2.740 #
36) L8 AR-1262-1	7.744	6.573	7907	5311	2.238	1.778
37) L8 AR-1262-2	8.288	7.068	23858	13243	3.827	2.547 #
38) L8 AR-1262-3	8.603	7.386	18226	17312	4.277	8.157 #
39) L8 AR-1262-4	8.677	7.409	14825	9245	4.547	2.421 #
40) L8 AR-1262-5	9.275	7.907	29277	12712	14.398	7.595 #
41) L9 AR-1268-1	8.603	7.386	18226	17312	2.469	2.953
42) L9 AR-1268-2	8.677	7.409	14825	9245	2.195	1.735
43) L9 AR-1268-3	0.000	7.618	0	5127	N.D.	1.157 #

Data Path : Z:\pestpcbsrv\HPCHEM1\ECD_0\Data\P0092319\
 Data File : P0061275.D
 Signal(s) : Signal #1: ECD1A.CH Signal #2: ECD2B.CH
 Acq On : 23 Sep 2019 17:01
 Operator : SM/AJ
 Sample : K4969-01
 Misc :
 ALS Vial : 28 Sample Multiplier: 1

Instrument :
 ECD_0
 ClientSampleId :
 FK-PS-01-059

Integration File signal 1: autoint1.e
 Integration File signal 2: autoint2.e
 Quant Time: Sep 24 01:27:23 2019
 Quant Method : Z:\pestpcbsrv\HPCHEM1\ECD_0\methods\P0091319.M
 Quant Title : GC EXTRACTABLES
 QLast Update : Sat Sep 14 00:06:36 2019
 Response via : Initial Calibration
 Integrator: ChemStation 6890 Scale Mode: Small noise peaks clipped

Volume Inj. : 2 µl
 Signal #1 Phase : ZB-MR1 Signal #2 Phase: ZB-MR2
 Signal #1 Info : 30Mx0.32mmx 0.50µ Signal #2 Info : 30M x 0.32mm x 0.25µm

	Compound	RT#1	RT#2	Resp#1	Resp#2	ng/ml	ng/ml
44)	L9 AR-1268-4	9.275	7.907	29277	12712	12.692	6.653 #
45)	L9 AR-1268-5	9.716	8.176	9766	10427	0.616	0.867 #

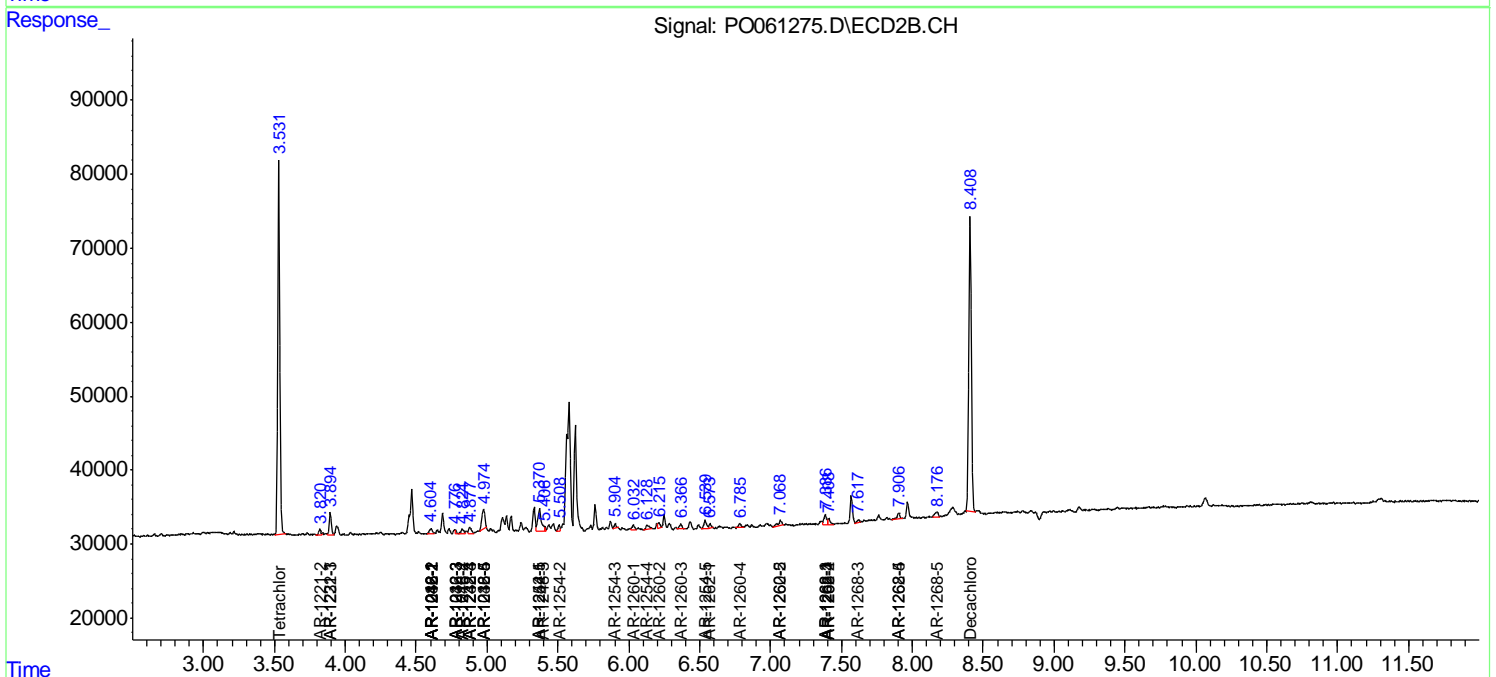
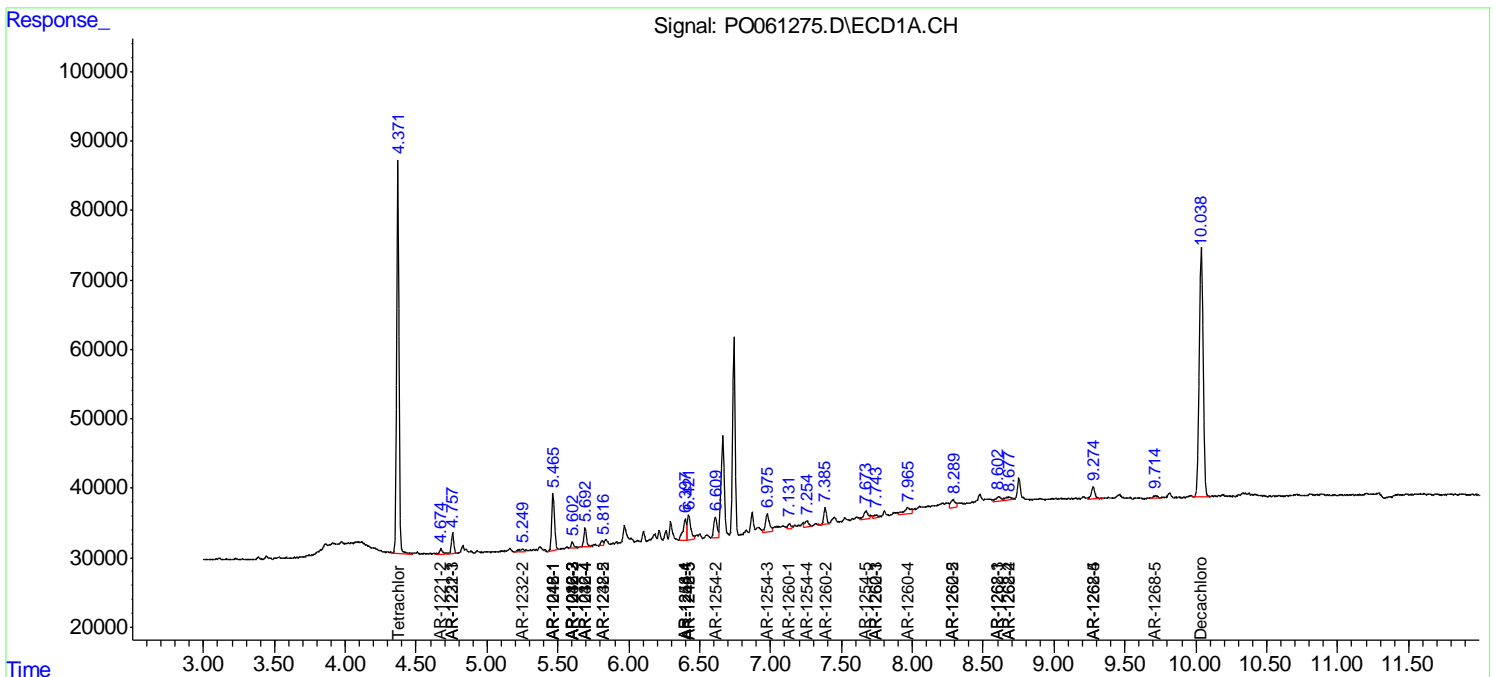
(f)=RT Delta > 1/2 Window (#)=Amounts differ by > 25% (m)=manual int.

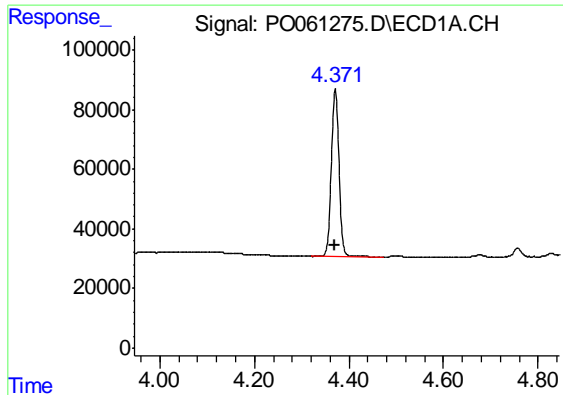
Data Path : Z:\pestpcbsrv\HPCHEM1\ECD_O\Data\PO092319\
 Data File : PO061275.D
 Signal(s) : Signal #1: ECD1A.CH Signal #2: ECD2B.CH
 Acq On : 23 Sep 2019 17:01
 Operator : SM/AJ
 Sample : K4969-01
 Misc :
 ALS Vial : 28 Sample Multiplier: 1

Instrument :
 ECD_O
 ClientSampled :
 FK-PS-01-059

Integration File signal 1: autoint1.e
 Integration File signal 2: autoint2.e
 Quant Time: Sep 24 01:27:23 2019
 Quant Method : Z:\pestpcbsrv\HPCHEM1\ECD_O\methods\PO091319.M
 Quant Title : GC EXTRACTABLES
 QLast Update : Sat Sep 14 00:06:36 2019
 Response via : Initial Calibration
 Integrator: ChemStation 6890 Scale Mode: Small noise peaks clipped

Volume Inj. : 2 µl
 Signal #1 Phase : ZB-MR1 Signal #2 Phase: ZB-MR2
 Signal #1 Info : 30Mx0.32mmx 0.50µ Signal #2 Info : 30M x 0.32mm x 0.25µm

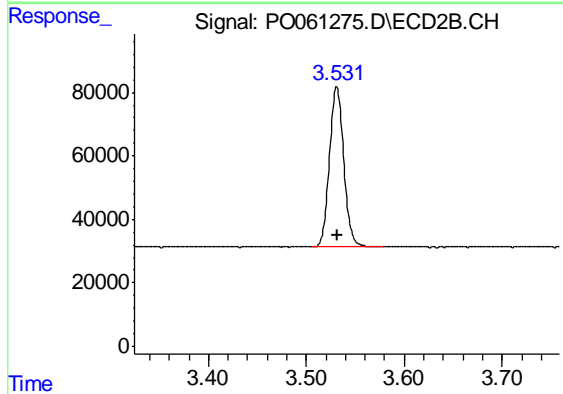




#1 Tetrachloro-m-xylene

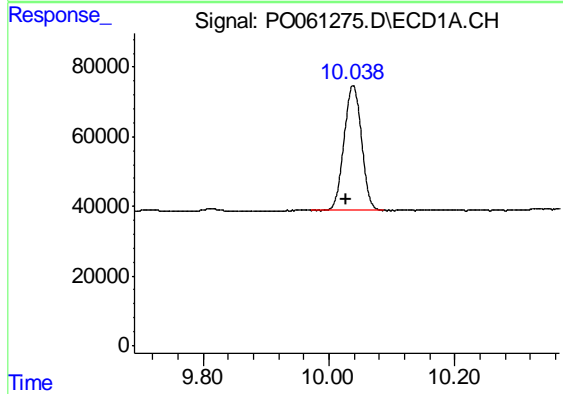
R.T.: 4.371 min
 Delta R.T.: 0.001 min
 Response: 633052
 Conc: 17.21 ng/ml

Instrument :
 ECD_O
 ClientSampleId :
 FK-PS-01-059



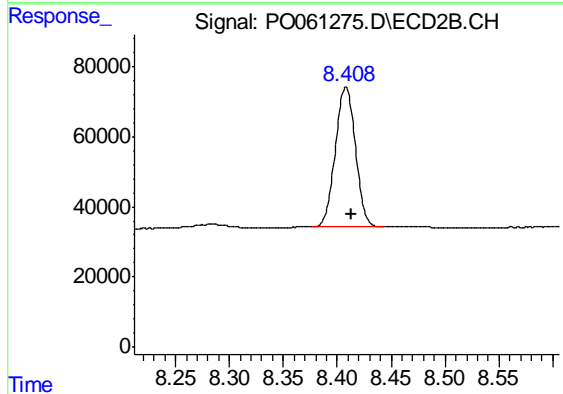
#1 Tetrachloro-m-xylene

R.T.: 3.531 min
 Delta R.T.: 0.000 min
 Response: 515679
 Conc: 18.47 ng/ml



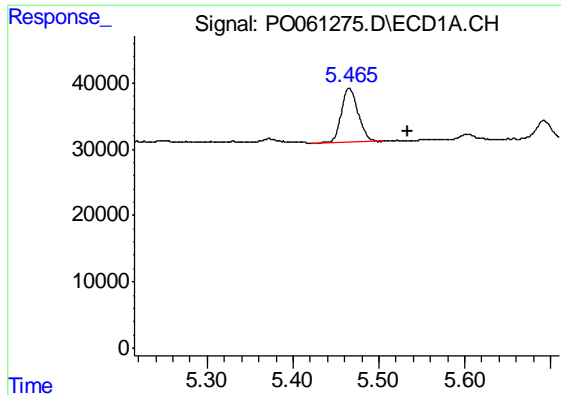
#2 Decachlorobiphenyl

R.T.: 10.038 min
 Delta R.T.: 0.011 min
 Response: 696661
 Conc: 15.16 ng/ml



#2 Decachlorobiphenyl

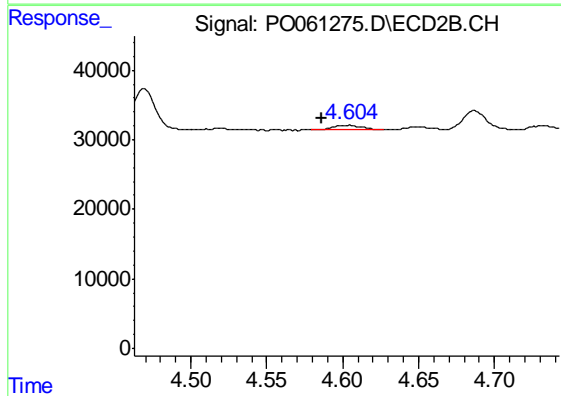
R.T.: 8.408 min
 Delta R.T.: -0.005 min
 Response: 515517
 Conc: 14.71 ng/ml



#3 AR-1016-1

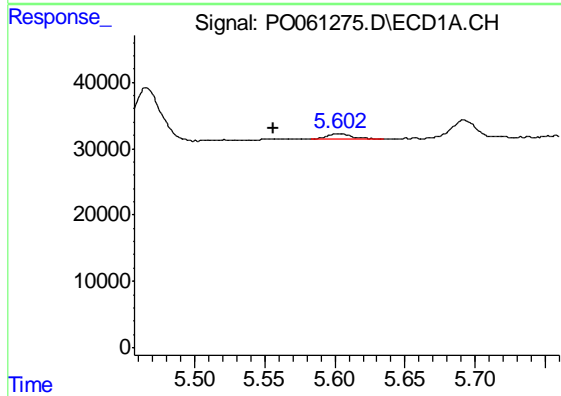
R.T.: 5.465 min
 Delta R.T.: -0.068 min
 Response: 110357
 Conc: 69.05 ng/ml

Instrument :
 ECD_O
 ClientSampleId :
 FK-PS-01-059



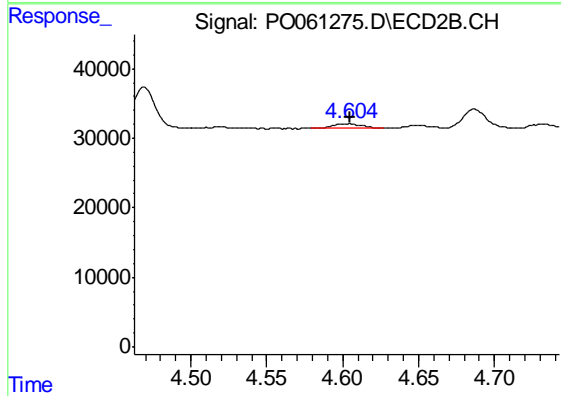
#3 AR-1016-1

R.T.: 4.604 min
 Delta R.T.: 0.018 min
 Response: 9214
 Conc: 7.45 ng/ml



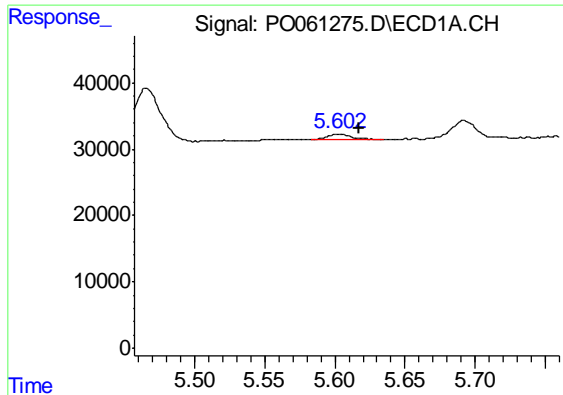
#4 AR-1016-2

R.T.: 5.603 min
 Delta R.T.: 0.047 min
 Response: 10516
 Conc: 4.59 ng/ml



#4 AR-1016-2

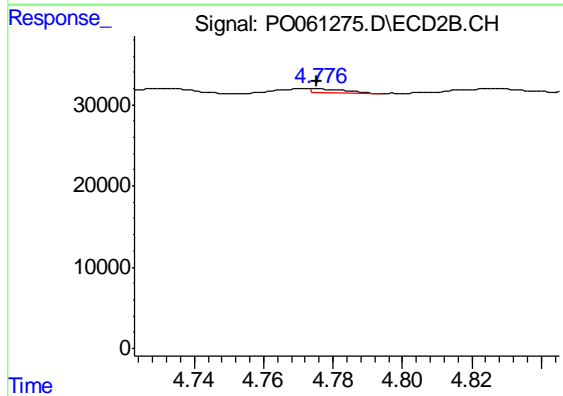
R.T.: 4.604 min
 Delta R.T.: 0.000 min
 Response: 9214
 Conc: 5.42 ng/ml



#5 AR-1016-3

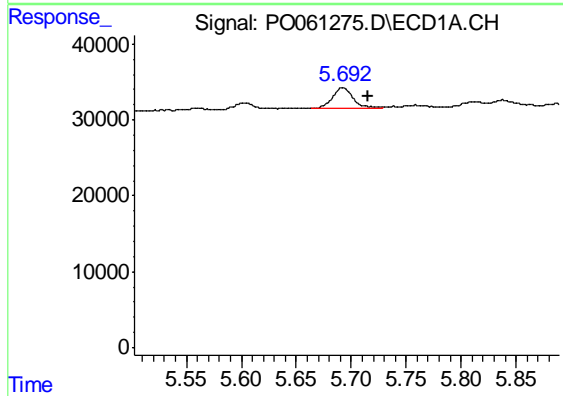
R.T.: 5.603 min
 Delta R.T.: -0.014 min
 Response: 10516
 Conc: 7.33 ng/ml

Instrument :
 ECD_O
 ClientSampleId :
 FK-PS-01-059



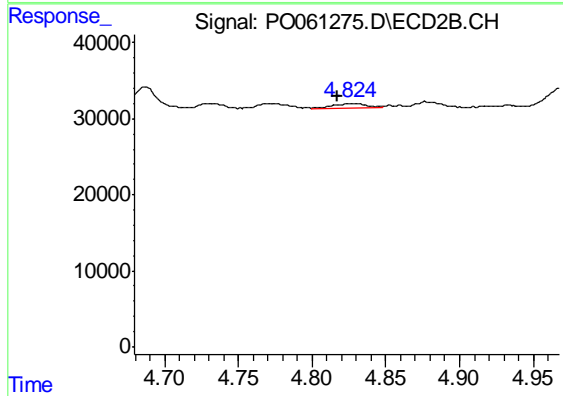
#5 AR-1016-3

R.T.: 4.776 min
 Delta R.T.: 0.000 min
 Response: 3736
 Conc: 3.85 ng/ml



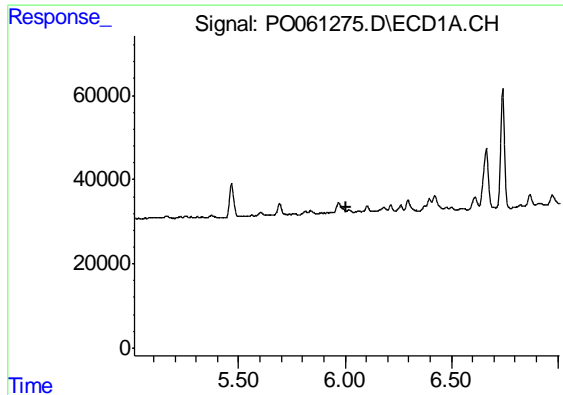
#6 AR-1016-4

R.T.: 5.692 min
 Delta R.T.: -0.023 min
 Response: 35785
 Conc: 30.34 ng/ml



#6 AR-1016-4

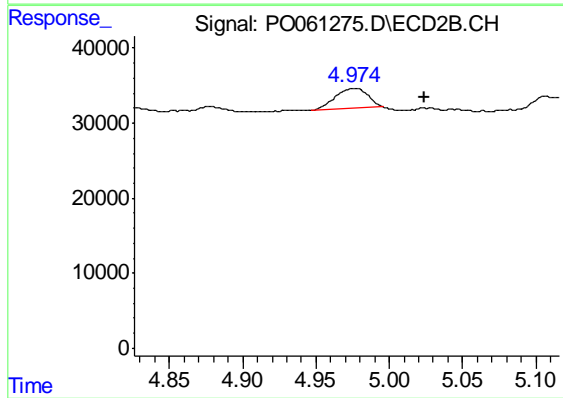
R.T.: 4.825 min
 Delta R.T.: 0.008 min
 Response: 9143
 Conc: 11.17 ng/ml



#7 AR-1016-5

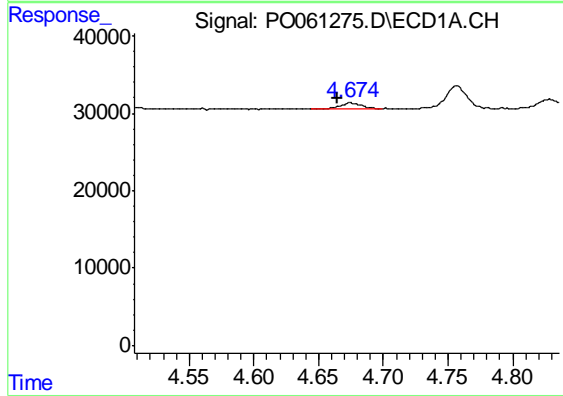
R.T.: 0.000 min
 Exp R.T. : 6.009 min
 Response: 0
 Conc: N.D.

Instrument :
 ECD_O
 ClientSampleId :
 FK-PS-01-059



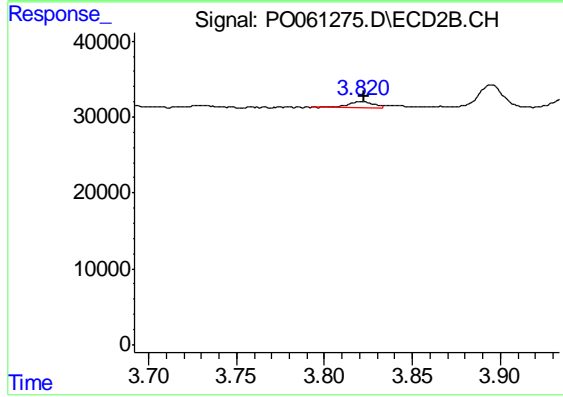
#7 AR-1016-5

R.T.: 4.975 min
 Delta R.T.: -0.049 min
 Response: 41222
 Conc: 39.36 ng/ml



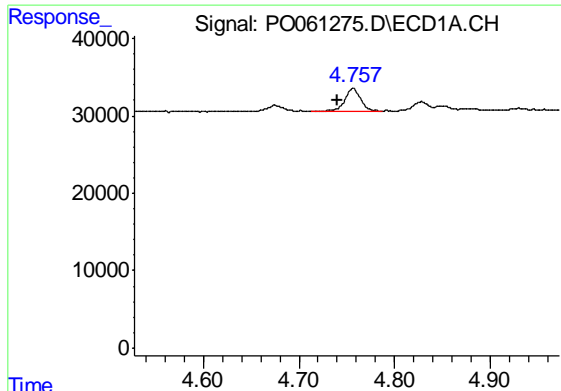
#9 AR-1221-2

R.T.: 4.675 min
 Delta R.T.: 0.011 min
 Response: 9521
 Conc: 27.87 ng/ml



#9 AR-1221-2

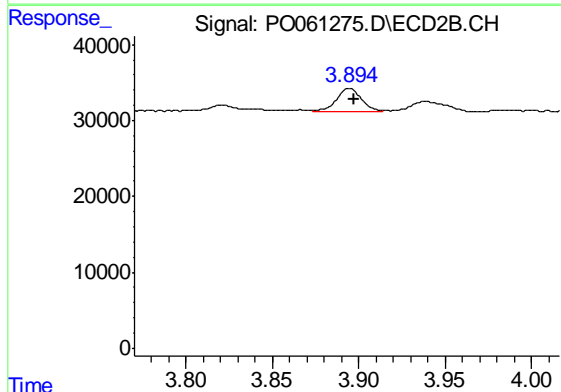
R.T.: 3.821 min
 Delta R.T.: -0.002 min
 Response: 7648
 Conc: 27.21 ng/ml



#10 AR-1221-3

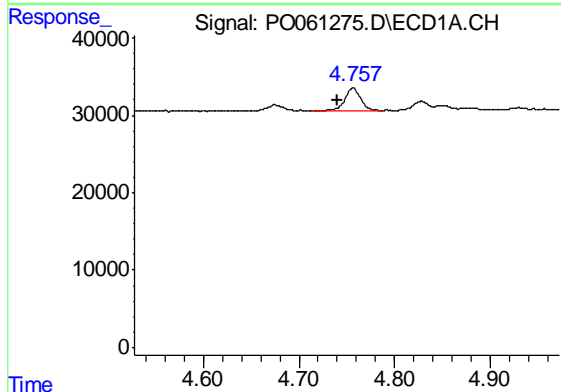
R.T.: 4.757 min
 Delta R.T.: 0.016 min
 Response: 34968
 Conc: 33.01 ng/ml

Instrument :
 ECD_O
 ClientSampleId :
 FK-PS-01-059



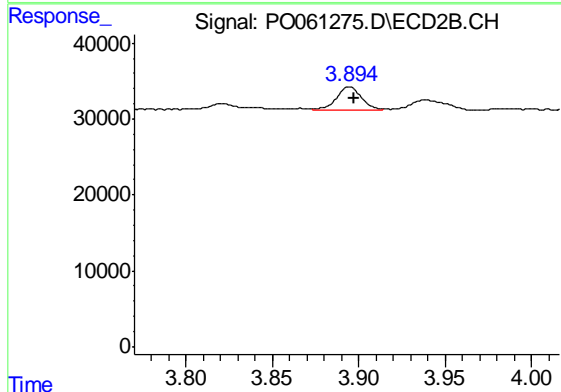
#10 AR-1221-3

R.T.: 3.895 min
 Delta R.T.: -0.003 min
 Response: 30486
 Conc: 36.73 ng/ml



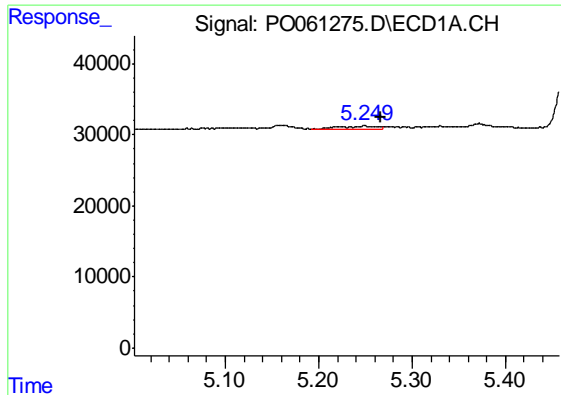
#11 AR-1232-1

R.T.: 4.757 min
 Delta R.T.: 0.016 min
 Response: 34968
 Conc: 29.97 ng/ml



#11 AR-1232-1

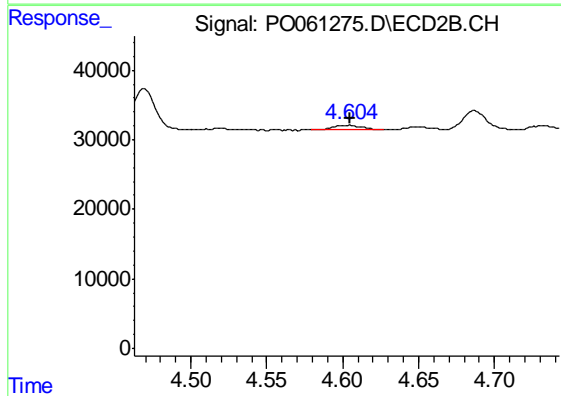
R.T.: 3.895 min
 Delta R.T.: -0.003 min
 Response: 30486
 Conc: 33.45 ng/ml



#12 AR-1232-2

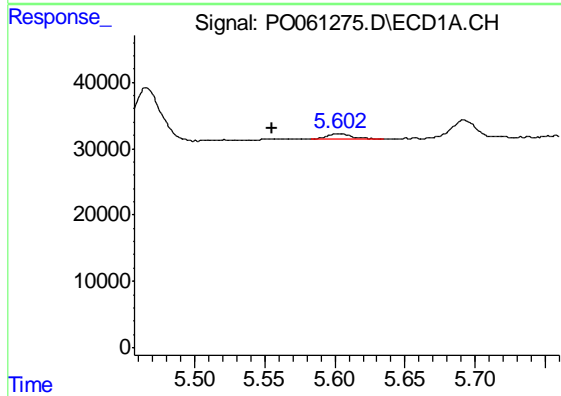
R.T.: 5.249 min
 Delta R.T.: -0.017 min
 Response: 11536
 Conc: 17.79 ng/ml

Instrument :
 ECD_O
 ClientSampleId :
 FK-PS-01-059



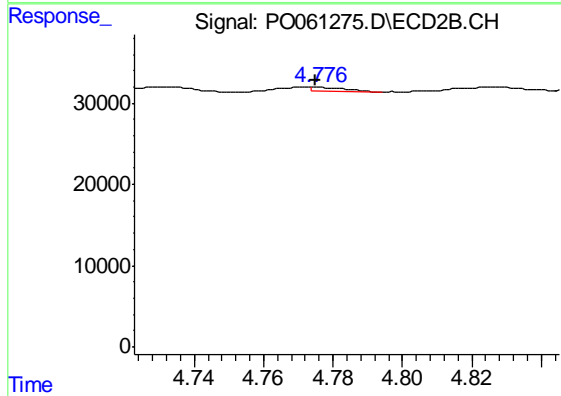
#12 AR-1232-2

R.T.: 4.604 min
 Delta R.T.: 0.000 min
 Response: 9214
 Conc: 9.13 ng/ml



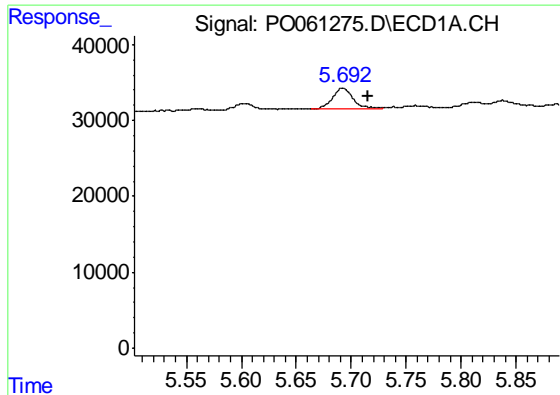
#13 AR-1232-3

R.T.: 5.603 min
 Delta R.T.: 0.048 min
 Response: 10516
 Conc: 7.85 ng/ml



#13 AR-1232-3

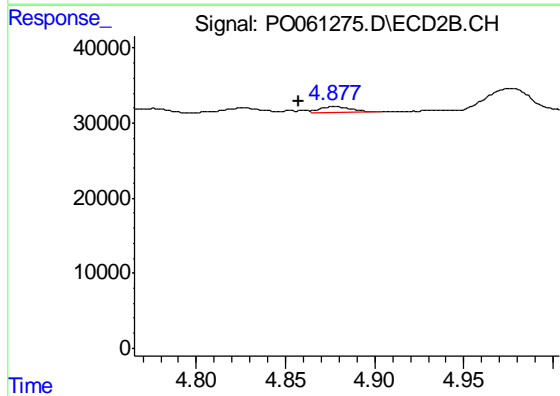
R.T.: 4.776 min
 Delta R.T.: 0.000 min
 Response: 3736
 Conc: 6.66 ng/ml



#14 AR-1232-4

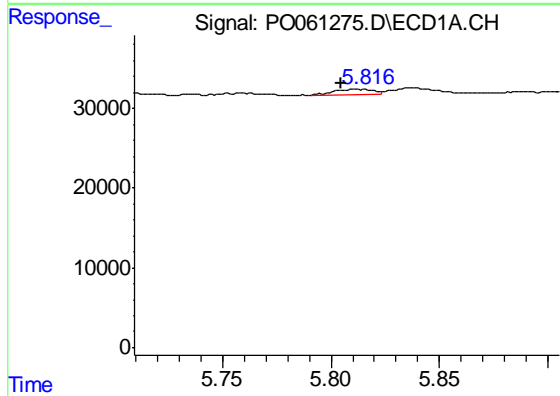
R.T.: 5.692 min
 Delta R.T.: -0.023 min
 Response: 35785
 Conc: 52.08 ng/ml

Instrument :
 ECD_O
 ClientSampleId :
 FK-PS-01-059



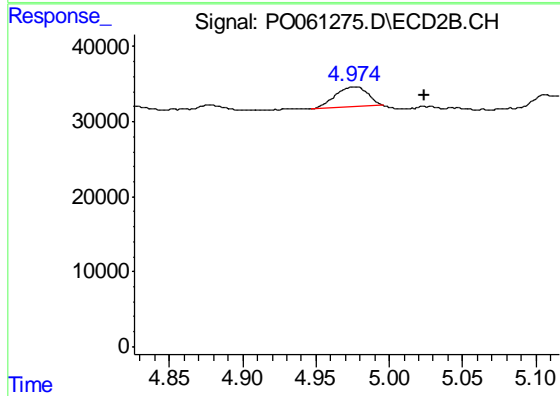
#14 AR-1232-4

R.T.: 4.877 min
 Delta R.T.: 0.020 min
 Response: 9555
 Conc: 18.30 ng/ml



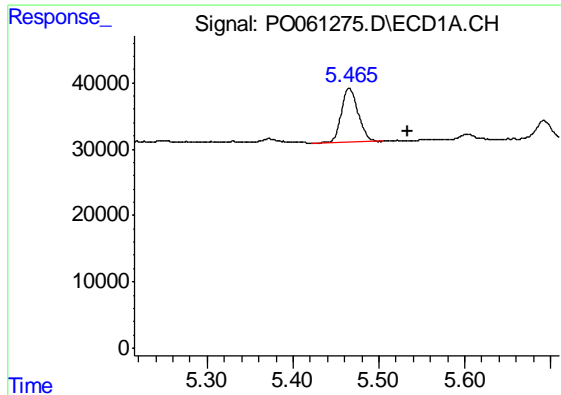
#15 AR-1232-5

R.T.: 5.811 min
 Delta R.T.: 0.007 min
 Response: 8617
 Conc: 15.74 ng/ml



#15 AR-1232-5

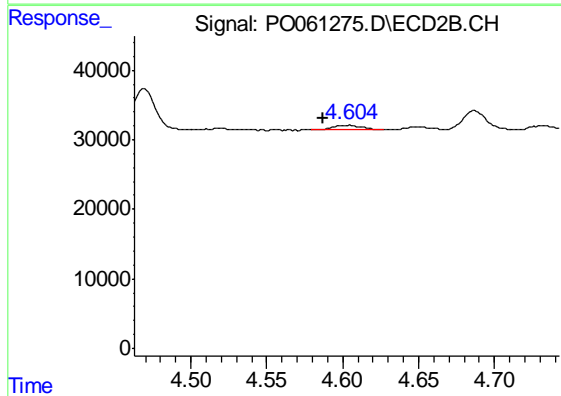
R.T.: 4.975 min
 Delta R.T.: -0.049 min
 Response: 41222
 Conc: 72.84 ng/ml



#16 AR-1242-1

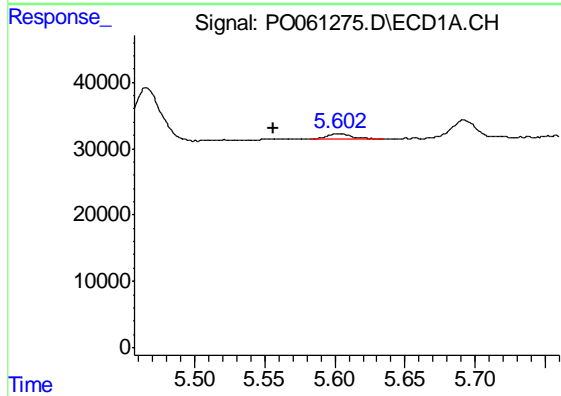
R.T.: 5.465 min
 Delta R.T.: -0.068 min
 Response: 110357
 Conc: 92.47 ng/ml

Instrument :
 ECD_O
 ClientSampleId :
 FK-PS-01-059



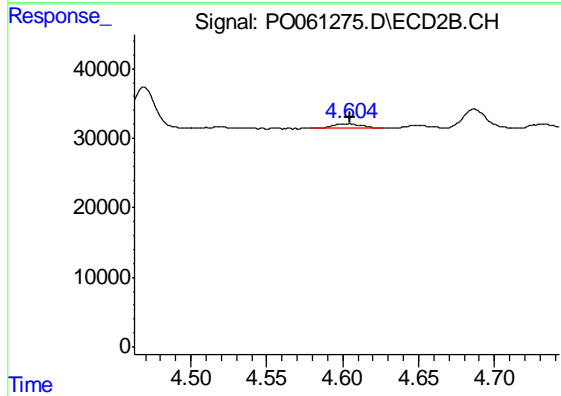
#16 AR-1242-1

R.T.: 4.604 min
 Delta R.T.: 0.017 min
 Response: 9214
 Conc: 10.12 ng/ml



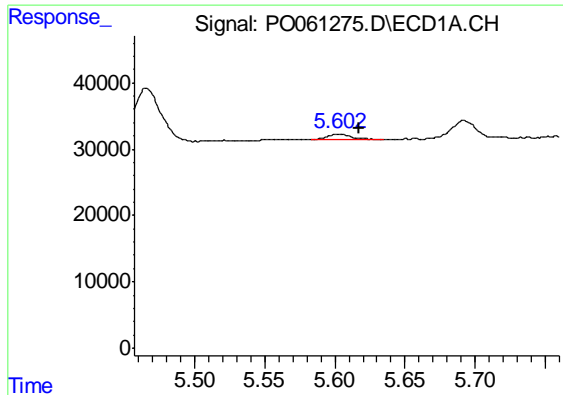
#17 AR-1242-2

R.T.: 5.603 min
 Delta R.T.: 0.047 min
 Response: 10516
 Conc: 6.15 ng/ml



#17 AR-1242-2

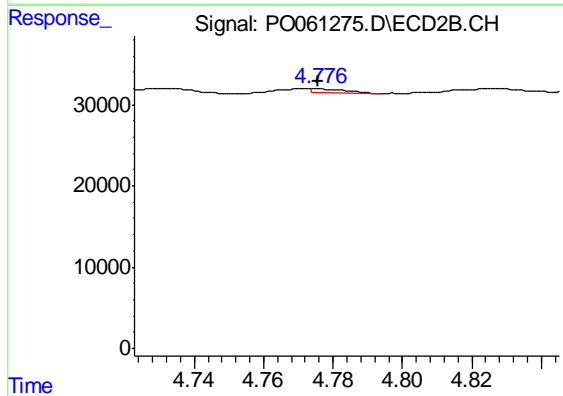
R.T.: 4.604 min
 Delta R.T.: 0.000 min
 Response: 9214
 Conc: 7.36 ng/ml



#18 AR-1242-3

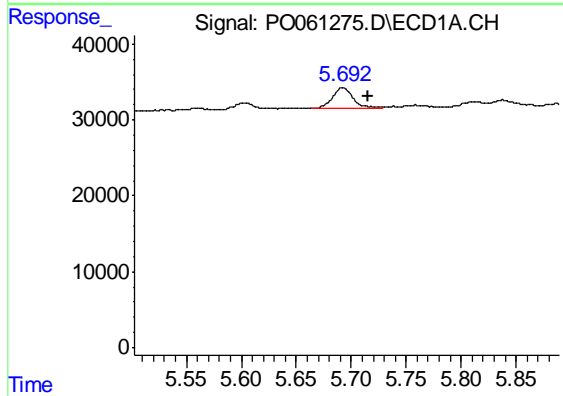
R.T.: 5.603 min
 Delta R.T.: -0.014 min
 Response: 10516
 Conc: 9.71 ng/ml

Instrument :
 ECD_O
 ClientSampleId :
 FK-PS-01-059



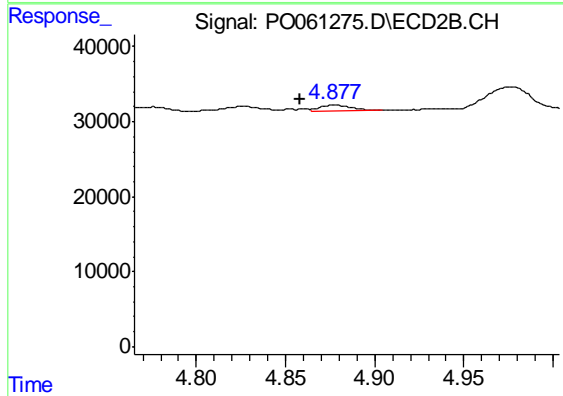
#18 AR-1242-3

R.T.: 4.776 min
 Delta R.T.: 0.000 min
 Response: 3736
 Conc: 5.23 ng/ml



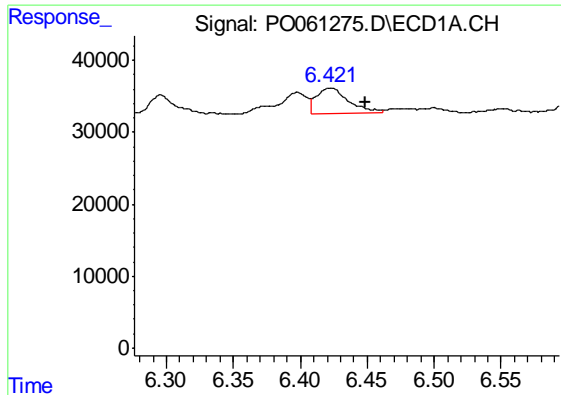
#19 AR-1242-4

R.T.: 5.692 min
 Delta R.T.: -0.023 min
 Response: 35785
 Conc: 40.54 ng/ml



#19 AR-1242-4

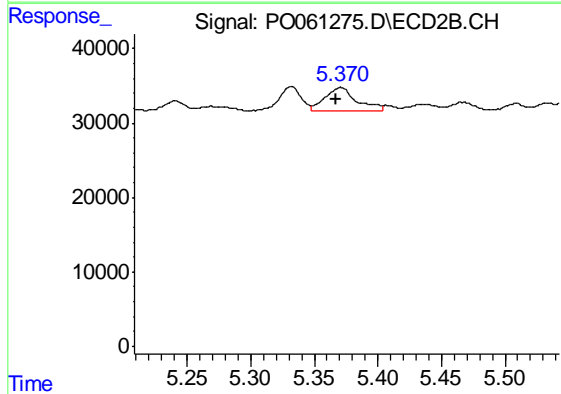
R.T.: 4.877 min
 Delta R.T.: 0.019 min
 Response: 9555
 Conc: 13.12 ng/ml



#20 AR-1242-5

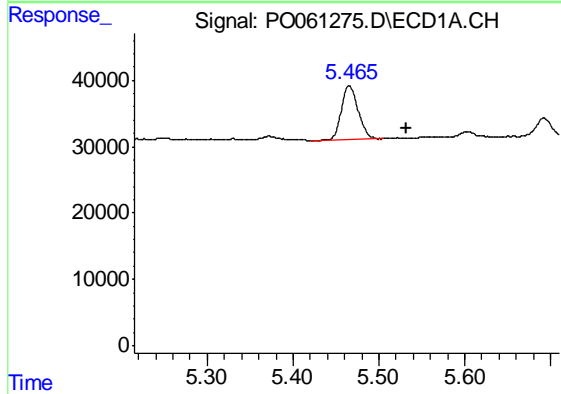
R.T.: 6.423 min
 Delta R.T.: -0.026 min
 Response: 60106
 Conc: 53.63 ng/ml

Instrument :
 ECD_O
 ClientSampleId :
 FK-PS-01-059



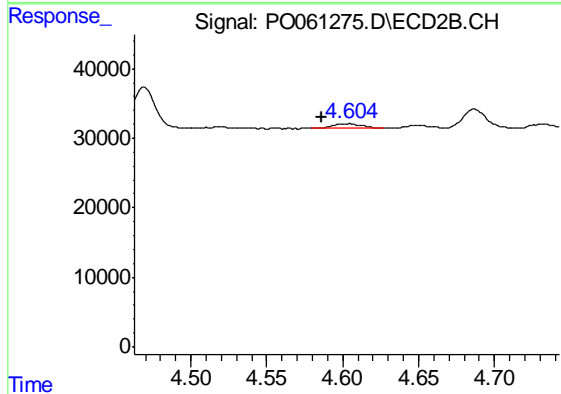
#20 AR-1242-5

R.T.: 5.371 min
 Delta R.T.: 0.004 min
 Response: 53478
 Conc: 54.02 ng/ml



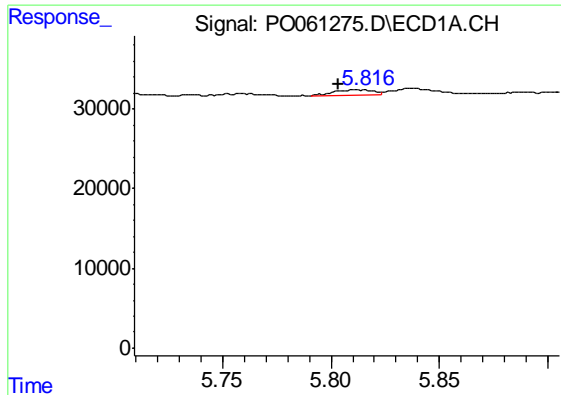
#21 AR-1248-1

R.T.: 5.465 min
 Delta R.T.: -0.067 min
 Response: 110357
 Conc: 119.88 ng/ml



#21 AR-1248-1

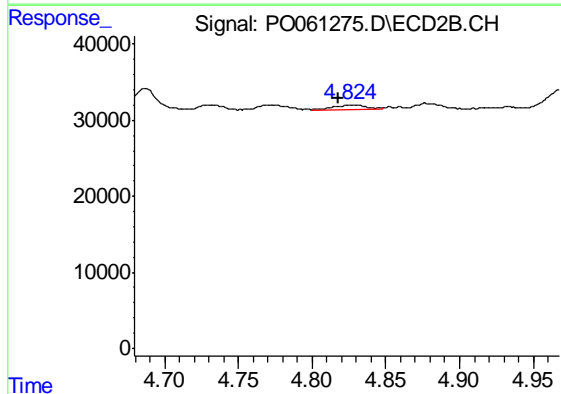
R.T.: 4.604 min
 Delta R.T.: 0.018 min
 Response: 9214
 Conc: 12.99 ng/ml



#22 AR-1248-2

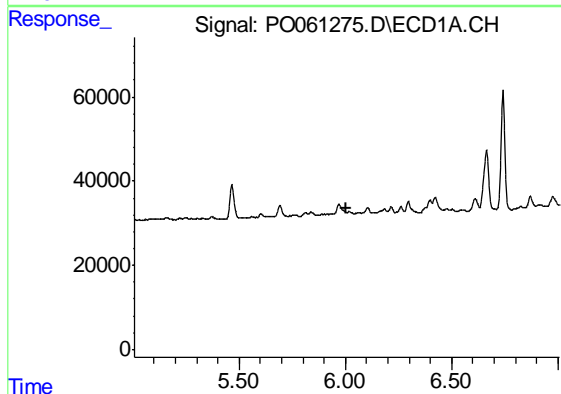
R.T.: 5.811 min
 Delta R.T.: 0.008 min
 Response: 8617
 Conc: 6.44 ng/ml

Instrument :
 ECD_O
 ClientSampleId :
 FK-PS-01-059



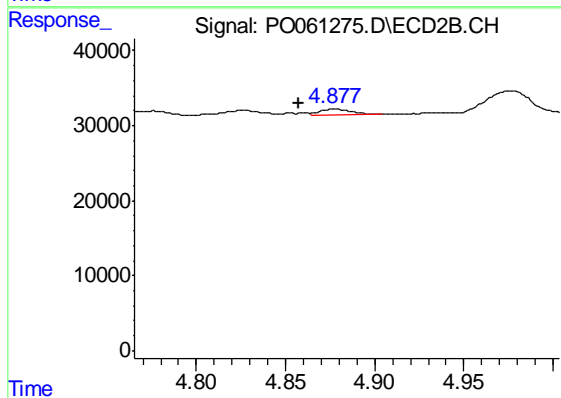
#22 AR-1248-2

R.T.: 4.825 min
 Delta R.T.: 0.007 min
 Response: 9143
 Conc: 9.46 ng/ml



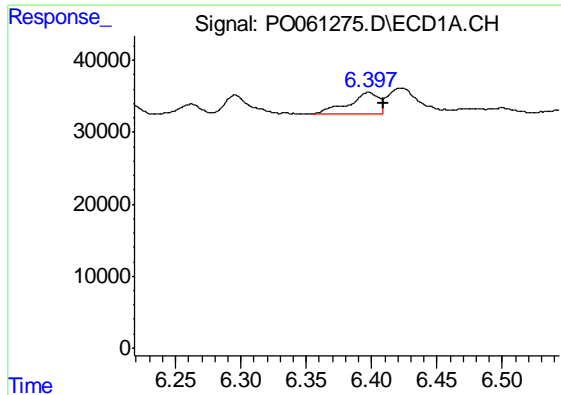
#23 AR-1248-3

R.T.: 0.000 min
 Exp R.T. : 6.007 min
 Response: 0
 Conc: N.D.



#23 AR-1248-3

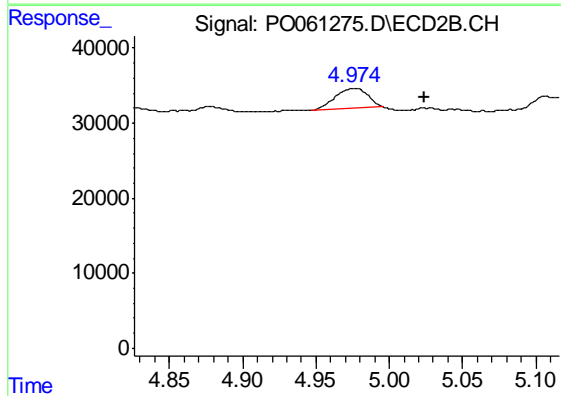
R.T.: 4.877 min
 Delta R.T.: 0.020 min
 Response: 9555
 Conc: 9.49 ng/ml



#24 AR-1248-4

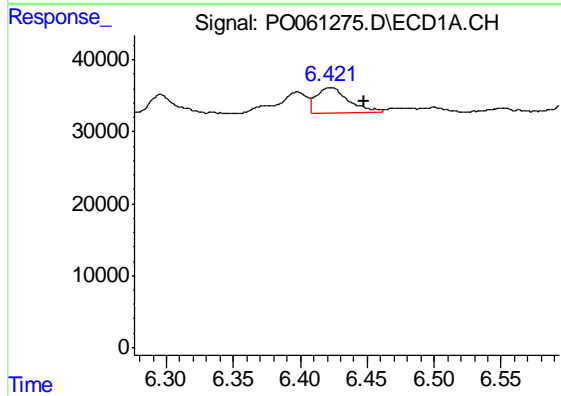
R.T.: 6.398 min
 Delta R.T.: -0.011 min
 Response: 48139
 Conc: 26.42 ng/ml

Instrument :
 ECD_O
 ClientSampleId :
 FK-PS-01-059



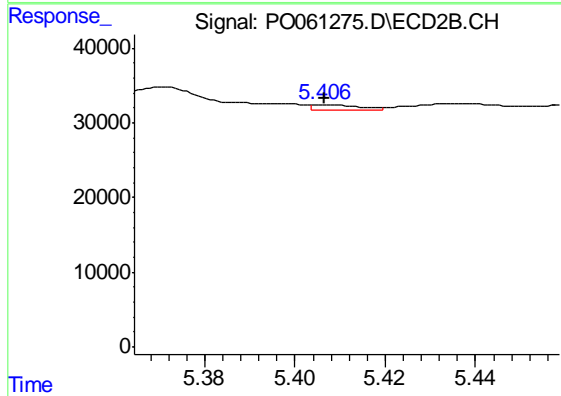
#24 AR-1248-4

R.T.: 4.975 min
 Delta R.T.: -0.048 min
 Response: 41222
 Conc: 34.33 ng/ml



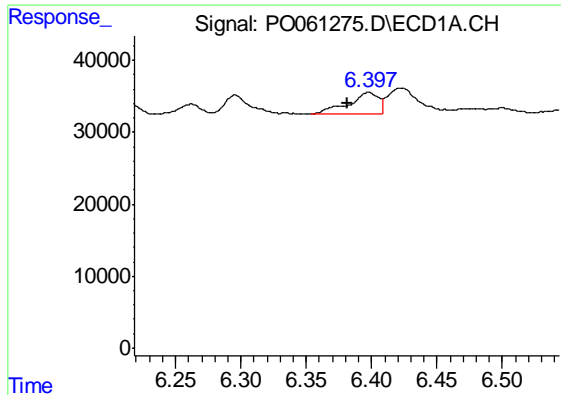
#25 AR-1248-5

R.T.: 6.423 min
 Delta R.T.: -0.025 min
 Response: 60106
 Conc: 34.35 ng/ml



#25 AR-1248-5

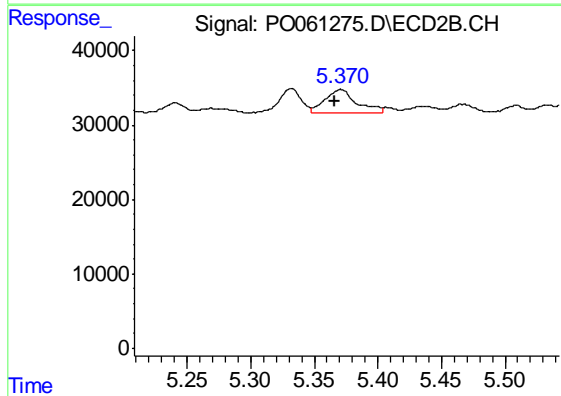
R.T.: 5.407 min
 Delta R.T.: 0.000 min
 Response: 5162
 Conc: 4.08 ng/ml



#26 AR-1254-1

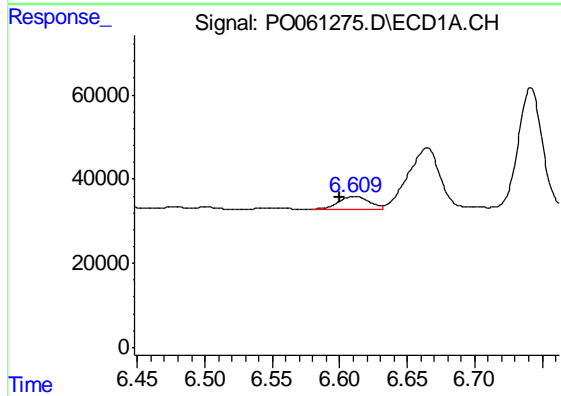
R.T.: 6.398 min
 Delta R.T.: 0.016 min
 Response: 48139
 Conc: 24.99 ng/ml

Instrument :
 ECD_O
 ClientSampleId :
 FK-PS-01-059



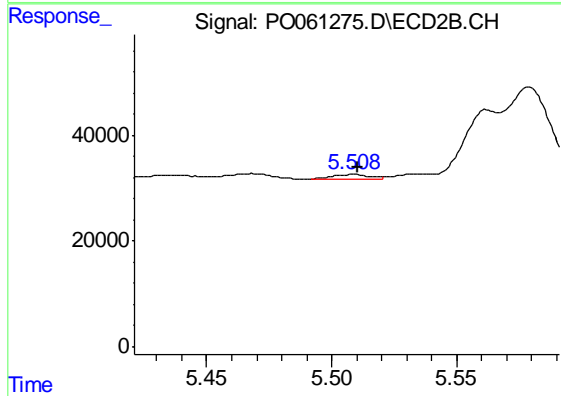
#26 AR-1254-1

R.T.: 5.371 min
 Delta R.T.: 0.005 min
 Response: 53478
 Conc: 25.95 ng/ml



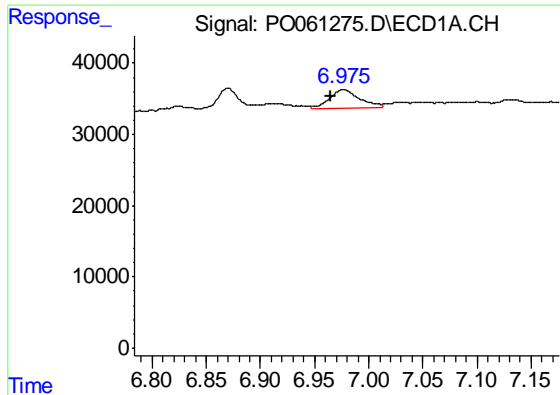
#27 AR-1254-2

R.T.: 6.611 min
 Delta R.T.: 0.011 min
 Response: 46433
 Conc: 14.75 ng/ml



#27 AR-1254-2

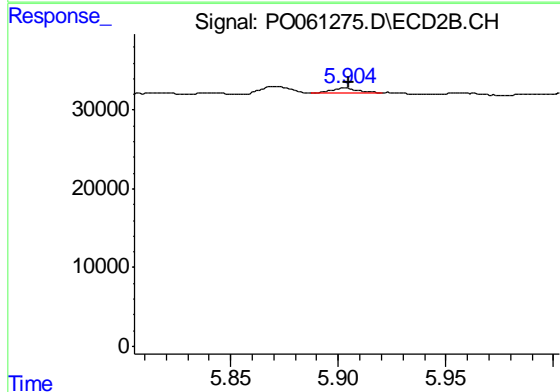
R.T.: 5.509 min
 Delta R.T.: -0.002 min
 Response: 9134
 Conc: 4.84 ng/ml



#28 AR-1254-3

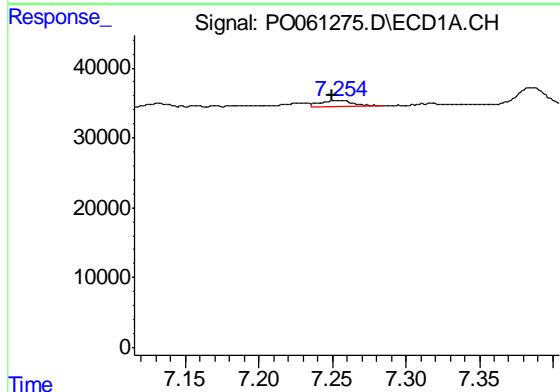
R.T.: 6.976 min
 Delta R.T.: 0.011 min
 Response: 48322
 Conc: 13.72 ng/ml

Instrument :
 ECD_O
 ClientSampleId :
 FK-PS-01-059



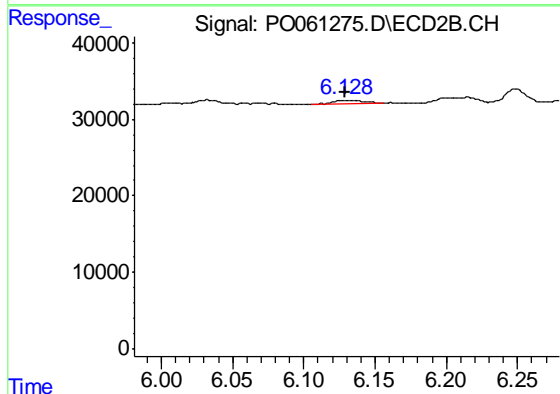
#28 AR-1254-3

R.T.: 5.904 min
 Delta R.T.: 0.000 min
 Response: 5564
 Conc: 1.75 ng/ml



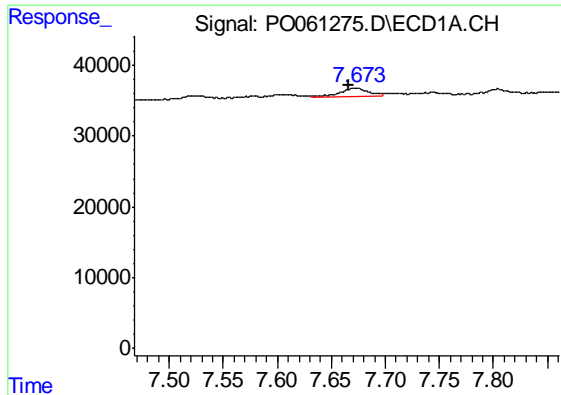
#29 AR-1254-4

R.T.: 7.254 min
 Delta R.T.: 0.004 min
 Response: 14057
 Conc: 5.19 ng/ml



#29 AR-1254-4

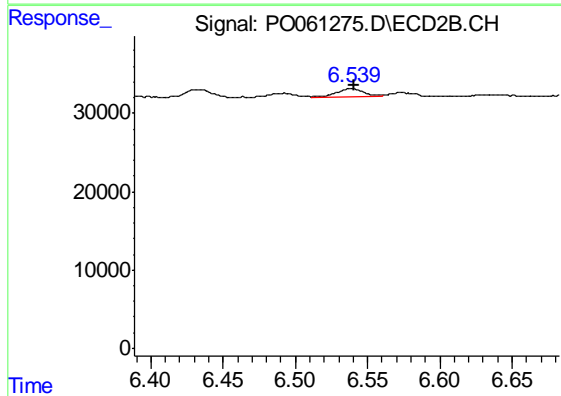
R.T.: 6.129 min
 Delta R.T.: 0.000 min
 Response: 7046
 Conc: 3.38 ng/ml



#30 AR-1254-5

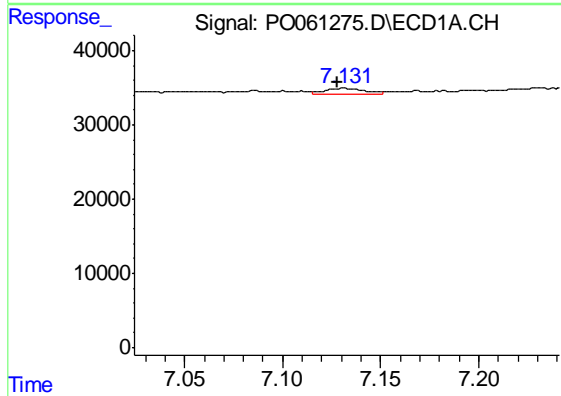
R.T.: 7.672 min
 Delta R.T.: 0.005 min
 Response: 24039
 Conc: 8.15 ng/ml

Instrument :
 ECD_O
 ClientSampleId :
 FK-PS-01-059



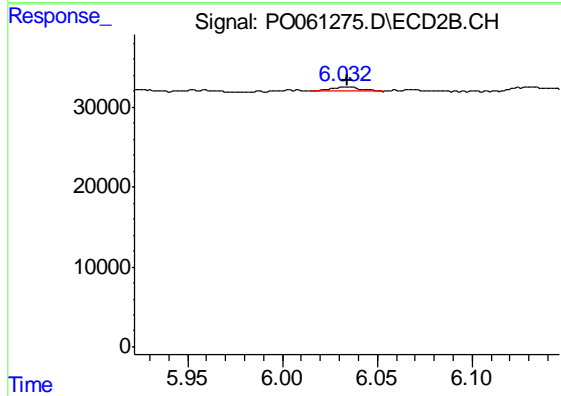
#30 AR-1254-5

R.T.: 6.539 min
 Delta R.T.: -0.001 min
 Response: 13889
 Conc: 4.39 ng/ml



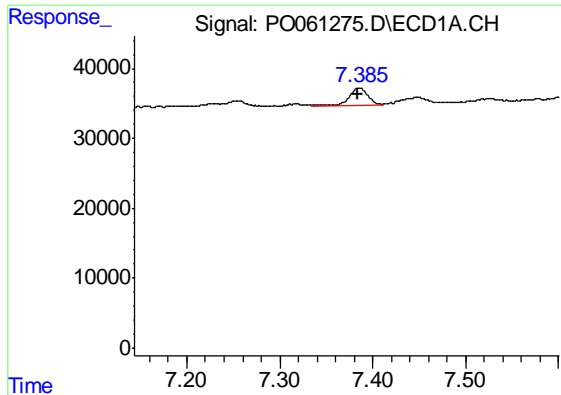
#31 AR-1260-1

R.T.: 7.132 min
 Delta R.T.: 0.004 min
 Response: 11373
 Conc: 4.67 ng/ml



#31 AR-1260-1

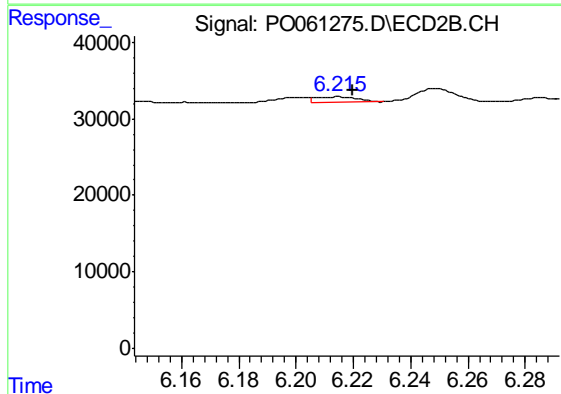
R.T.: 6.032 min
 Delta R.T.: -0.003 min
 Response: 6516
 Conc: 3.10 ng/ml



#32 AR-1260-2

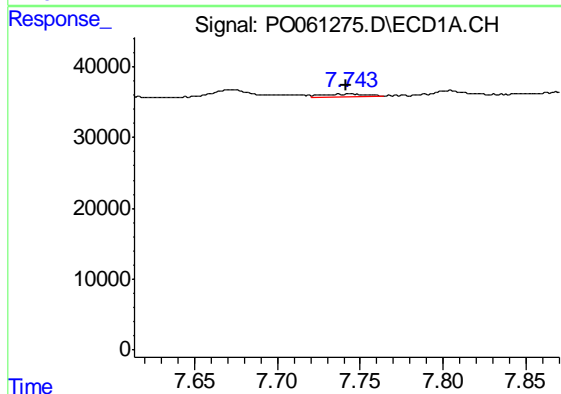
R.T.: 7.385 min
 Delta R.T.: 0.000 min
 Response: 32452
 Conc: 10.73 ng/ml

Instrument :
 ECD_O
 ClientSampleId :
 FK-PS-01-059



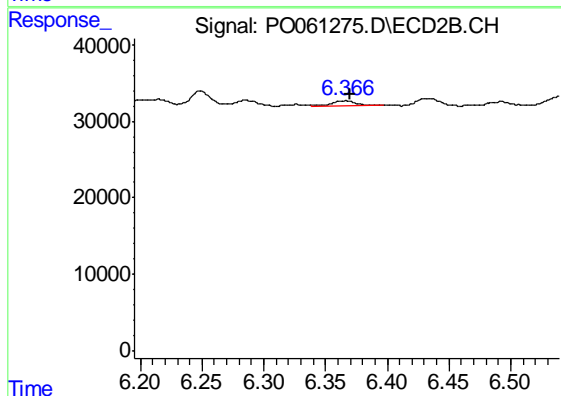
#32 AR-1260-2

R.T.: 6.215 min
 Delta R.T.: -0.005 min
 Response: 7228
 Conc: 2.80 ng/ml



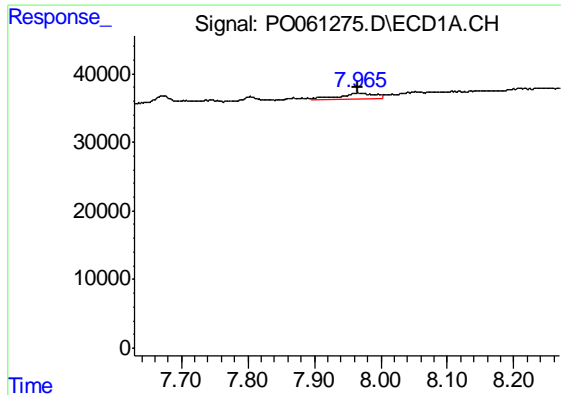
#33 AR-1260-3

R.T.: 7.744 min
 Delta R.T.: 0.003 min
 Response: 7907
 Conc: 3.31 ng/ml



#33 AR-1260-3

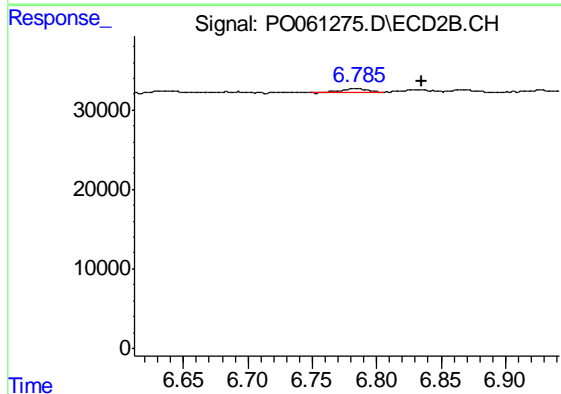
R.T.: 6.366 min
 Delta R.T.: -0.003 min
 Response: 8822
 Conc: 3.66 ng/ml



#34 AR-1260-4

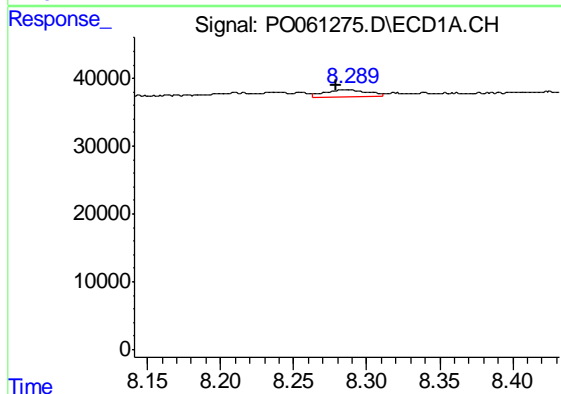
R.T.: 7.966 min
 Delta R.T.: 0.000 min
 Response: 31267
 Conc: 11.18 ng/ml

Instrument :
 ECD_O
 ClientSampleId :
 FK-PS-01-059



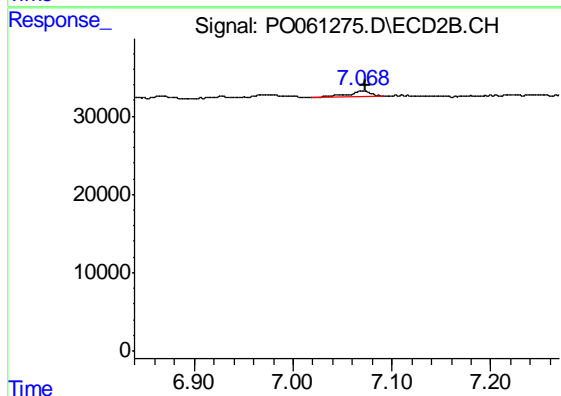
#34 AR-1260-4

R.T.: 6.785 min
 Delta R.T.: -0.049 min
 Response: 7678
 Conc: 3.59 ng/ml



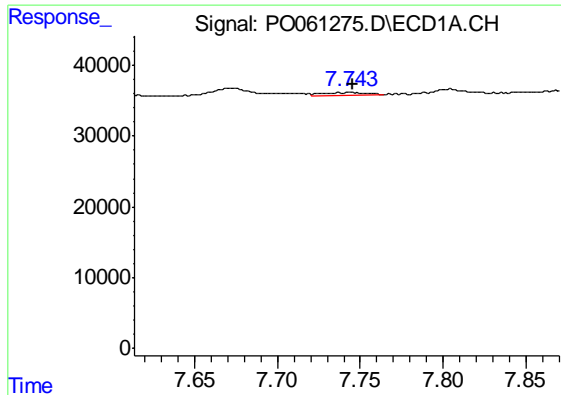
#35 AR-1260-5

R.T.: 8.288 min
 Delta R.T.: 0.009 min
 Response: 23858
 Conc: 4.38 ng/ml



#35 AR-1260-5

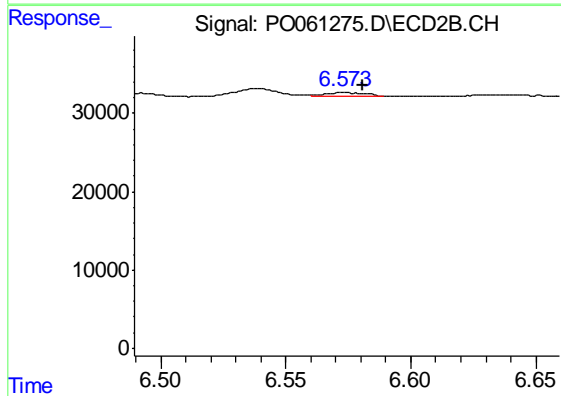
R.T.: 7.068 min
 Delta R.T.: -0.005 min
 Response: 13243
 Conc: 2.74 ng/ml



#36 AR-1262-1

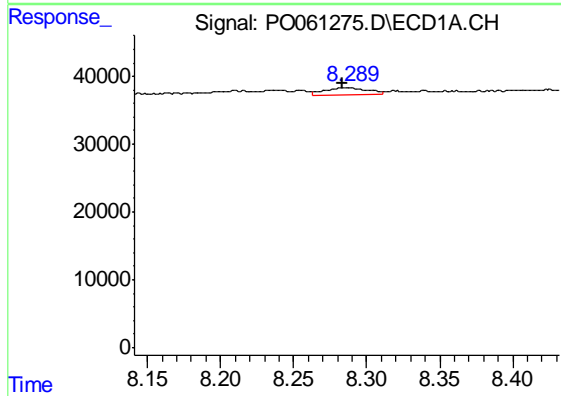
R.T.: 7.744 min
 Delta R.T.: -0.001 min
 Response: 7907
 Conc: 2.24 ng/ml

Instrument :
 ECD_O
 ClientSampleId :
 FK-PS-01-059



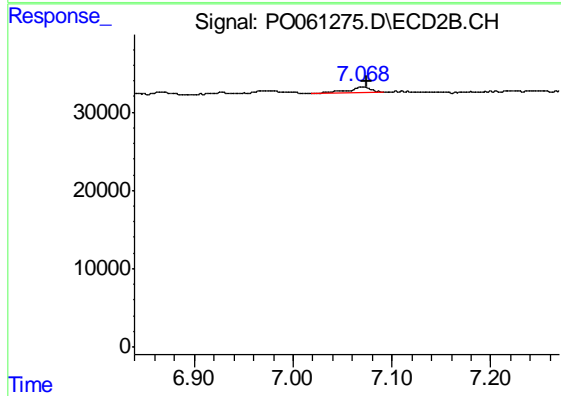
#36 AR-1262-1

R.T.: 6.573 min
 Delta R.T.: -0.008 min
 Response: 5311
 Conc: 1.78 ng/ml



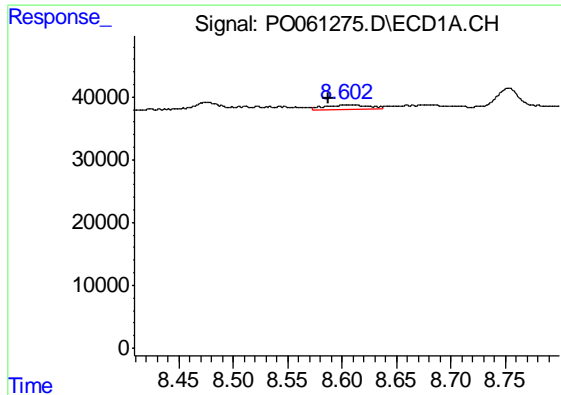
#37 AR-1262-2

R.T.: 8.288 min
 Delta R.T.: 0.005 min
 Response: 23858
 Conc: 3.83 ng/ml



#37 AR-1262-2

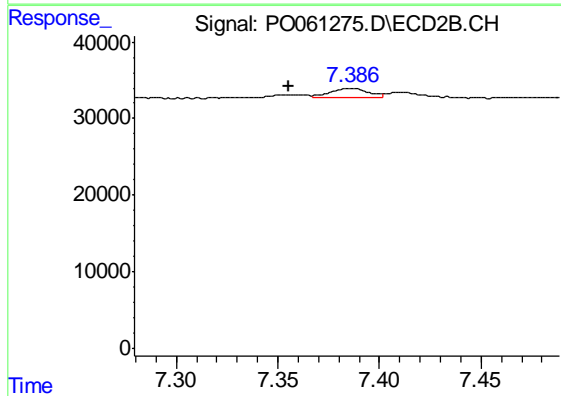
R.T.: 7.068 min
 Delta R.T.: -0.006 min
 Response: 13243
 Conc: 2.55 ng/ml



#38 AR-1262-3

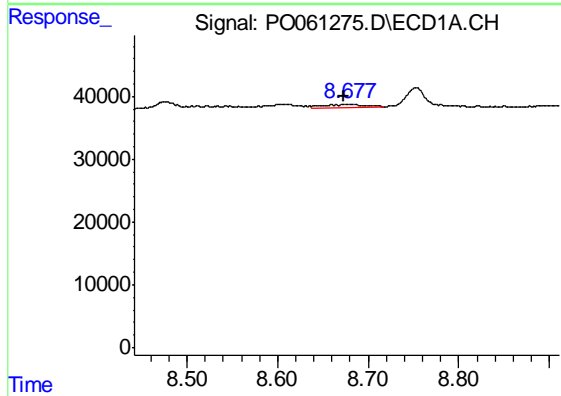
R.T.: 8.603 min
 Delta R.T.: 0.016 min
 Response: 18226
 Conc: 4.28 ng/ml

Instrument :
 ECD_O
 ClientSampleId :
 FK-PS-01-059



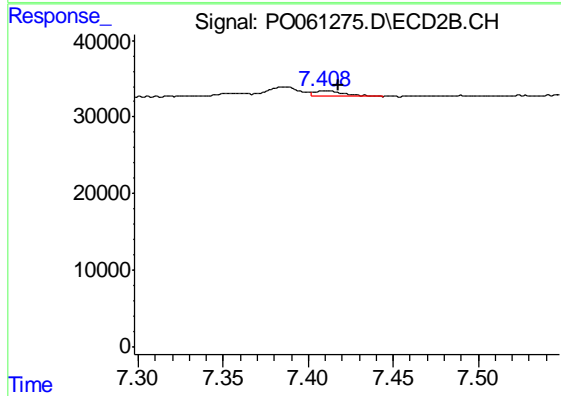
#38 AR-1262-3

R.T.: 7.386 min
 Delta R.T.: 0.031 min
 Response: 17312
 Conc: 8.16 ng/ml



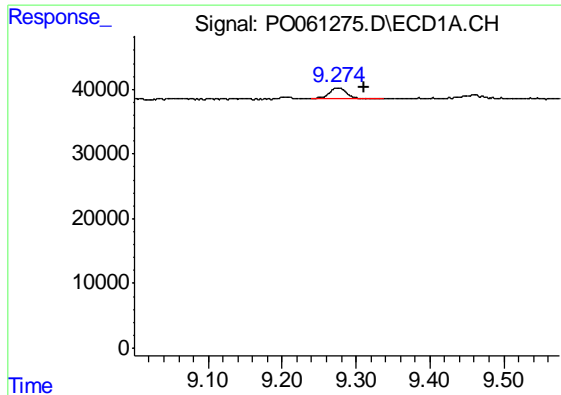
#39 AR-1262-4

R.T.: 8.677 min
 Delta R.T.: 0.004 min
 Response: 14825
 Conc: 4.55 ng/ml



#39 AR-1262-4

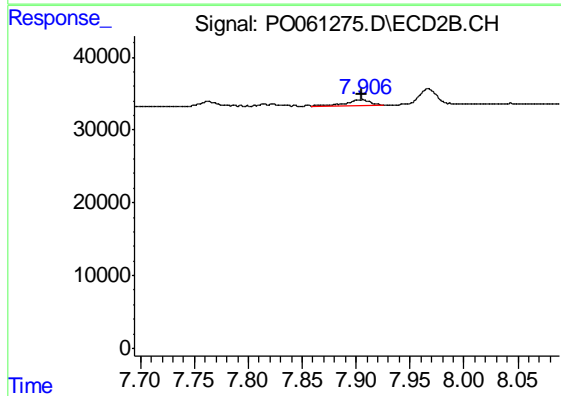
R.T.: 7.409 min
 Delta R.T.: -0.009 min
 Response: 9245
 Conc: 2.42 ng/ml



#40 AR-1262-5

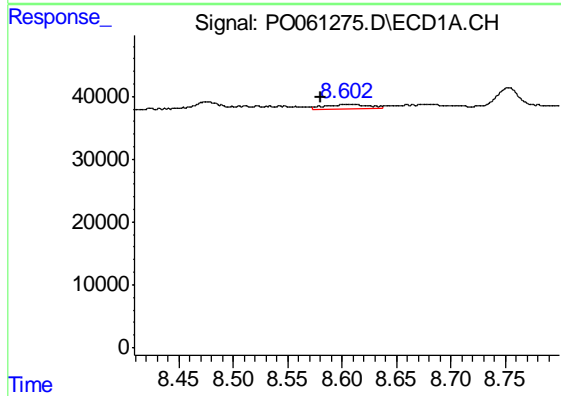
R.T.: 9.275 min
 Delta R.T.: -0.037 min
 Response: 29277
 Conc: 14.40 ng/ml

Instrument :
 ECD_O
 ClientSampleId :
 FK-PS-01-059



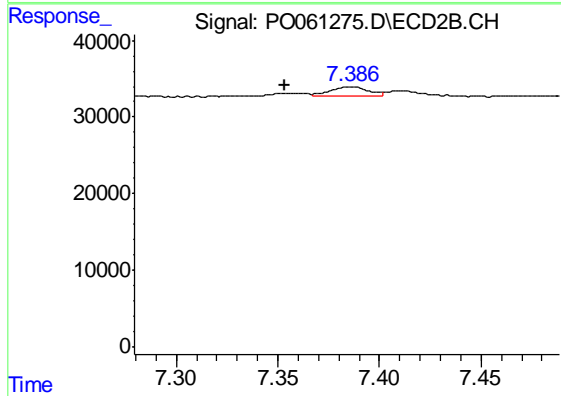
#40 AR-1262-5

R.T.: 7.907 min
 Delta R.T.: 0.001 min
 Response: 12712
 Conc: 7.59 ng/ml



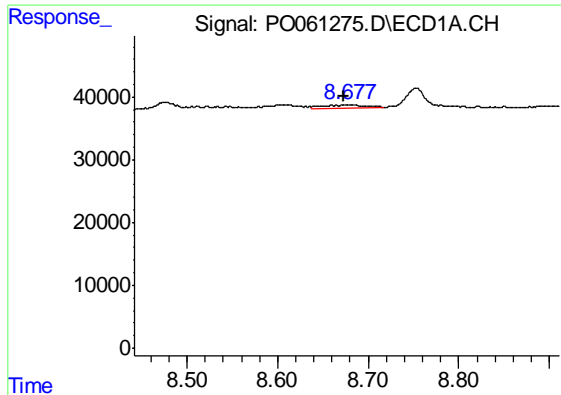
#41 AR-1268-1

R.T.: 8.603 min
 Delta R.T.: 0.023 min
 Response: 18226
 Conc: 2.47 ng/ml



#41 AR-1268-1

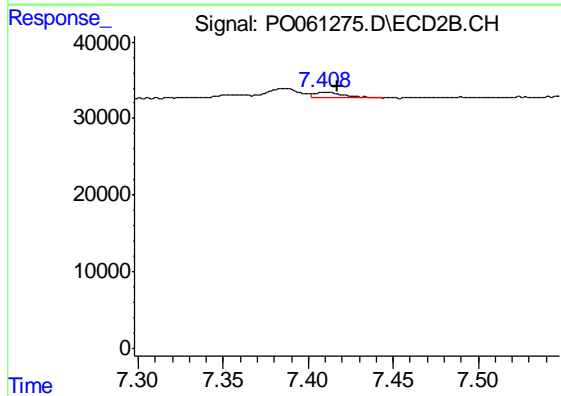
R.T.: 7.386 min
 Delta R.T.: 0.033 min
 Response: 17312
 Conc: 2.95 ng/ml



#42 AR-1268-2

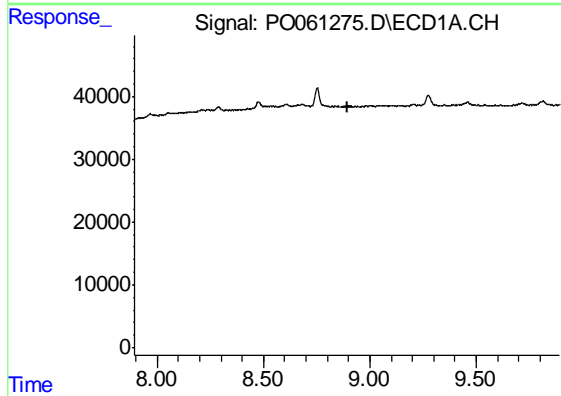
R.T.: 8.677 min
Delta R.T.: 0.004 min
Response: 14825
Conc: 2.19 ng/ml

Instrument :
ECD_O
ClientSampleId :
FK-PS-01-059



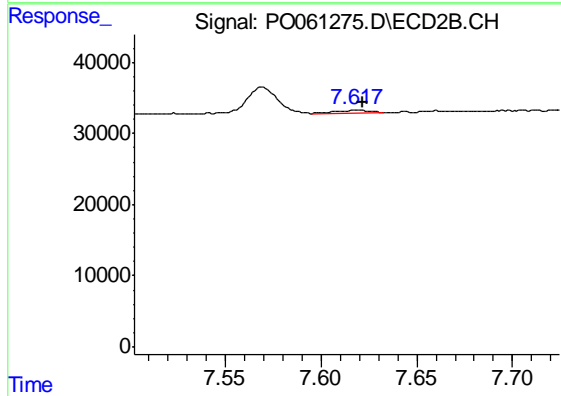
#42 AR-1268-2

R.T.: 7.409 min
Delta R.T.: -0.008 min
Response: 9245
Conc: 1.73 ng/ml



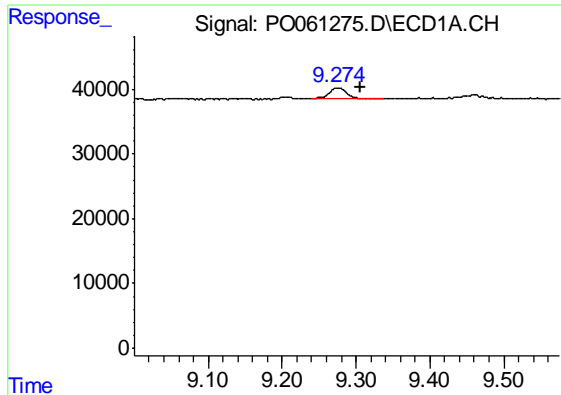
#43 AR-1268-3

R.T.: 0.000 min
Exp R.T. : 8.893 min
Response: 0
Conc: N.D.



#43 AR-1268-3

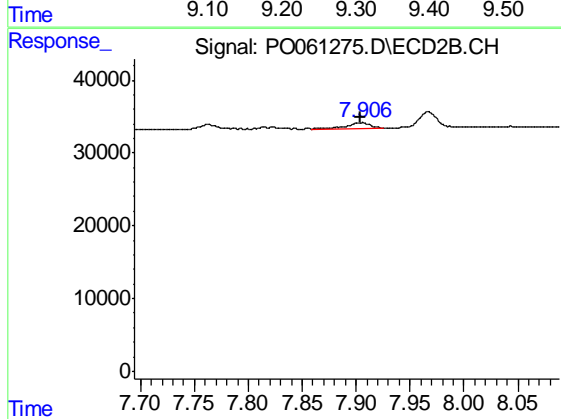
R.T.: 7.618 min
Delta R.T.: -0.004 min
Response: 5127
Conc: 1.16 ng/ml



#44 AR-1268-4

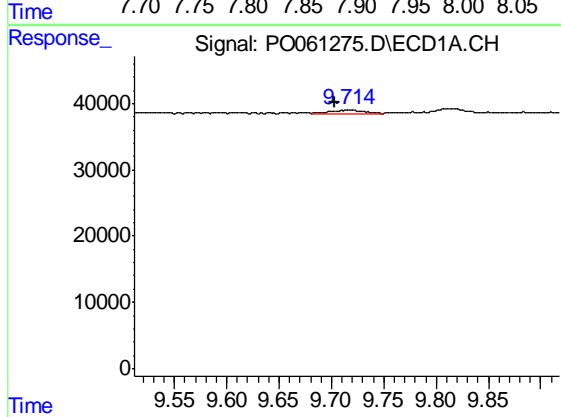
R.T.: 9.275 min
 Delta R.T.: -0.031 min
 Response: 29277
 Conc: 12.69 ng/ml

Instrument :
 ECD_O
 ClientSampleId :
 FK-PS-01-059



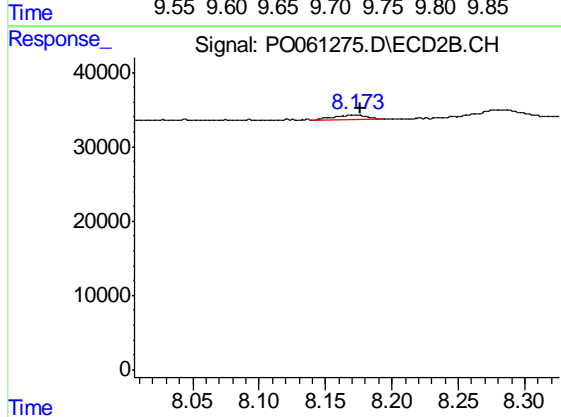
#44 AR-1268-4

R.T.: 7.907 min
 Delta R.T.: 0.003 min
 Response: 12712
 Conc: 6.65 ng/ml



#45 AR-1268-5

R.T.: 9.716 min
 Delta R.T.: 0.012 min
 Response: 9766
 Conc: 0.62 ng/ml



#45 AR-1268-5

R.T.: 8.176 min
 Delta R.T.: 0.000 min
 Response: 10427
 Conc: 0.87 ng/ml