

Data Path : Z:\pestpcbsrv\HPCHEM1\ECD_O\Data\P0092319\
 Data File : P0061288.D
 Signal(s) : Signal #1: ECD1A.CH Signal #2: ECD2B.CH
 Acq On : 23 Sep 2019 21:35
 Operator : SM/AJ
 Sample : K4997-09
 Misc :
 ALS Vial : 39 Sample Multiplier: 1

Instrument :
 ECD_O
 ClientSampleId :
 WC-12-091919

Integration File signal 1: autoint1.e
 Integration File signal 2: autoint2.e
 Quant Time: Sep 24 01:34:47 2019
 Quant Method : Z:\pestpcbsrv\HPCHEM1\ECD_O\methods\P0091319.M
 Quant Title : GC EXTRACTABLES
 QLast Update : Sat Sep 14 00:06:36 2019
 Response via : Initial Calibration
 Integrator: ChemStation 6890 Scale Mode: Small noise peaks clipped

Volume Inj. : 2 µl
 Signal #1 Phase : ZB-MR1 Signal #2 Phase: ZB-MR2
 Signal #1 Info : 30Mx0.32mmx 0.50µ Signal #2 Info : 30M x 0.32mm x 0.25µm

Compound	RT#1	RT#2	Resp#1	Resp#2	ng/ml	ng/ml

System Monitoring Compounds						
1) SA Tetrachlo...	4.371	3.531	964242	750839	26.209	26.890
2) SA Decachlor...	10.039	8.404	1462820	8729991	31.838	249.060 #

Target Compounds

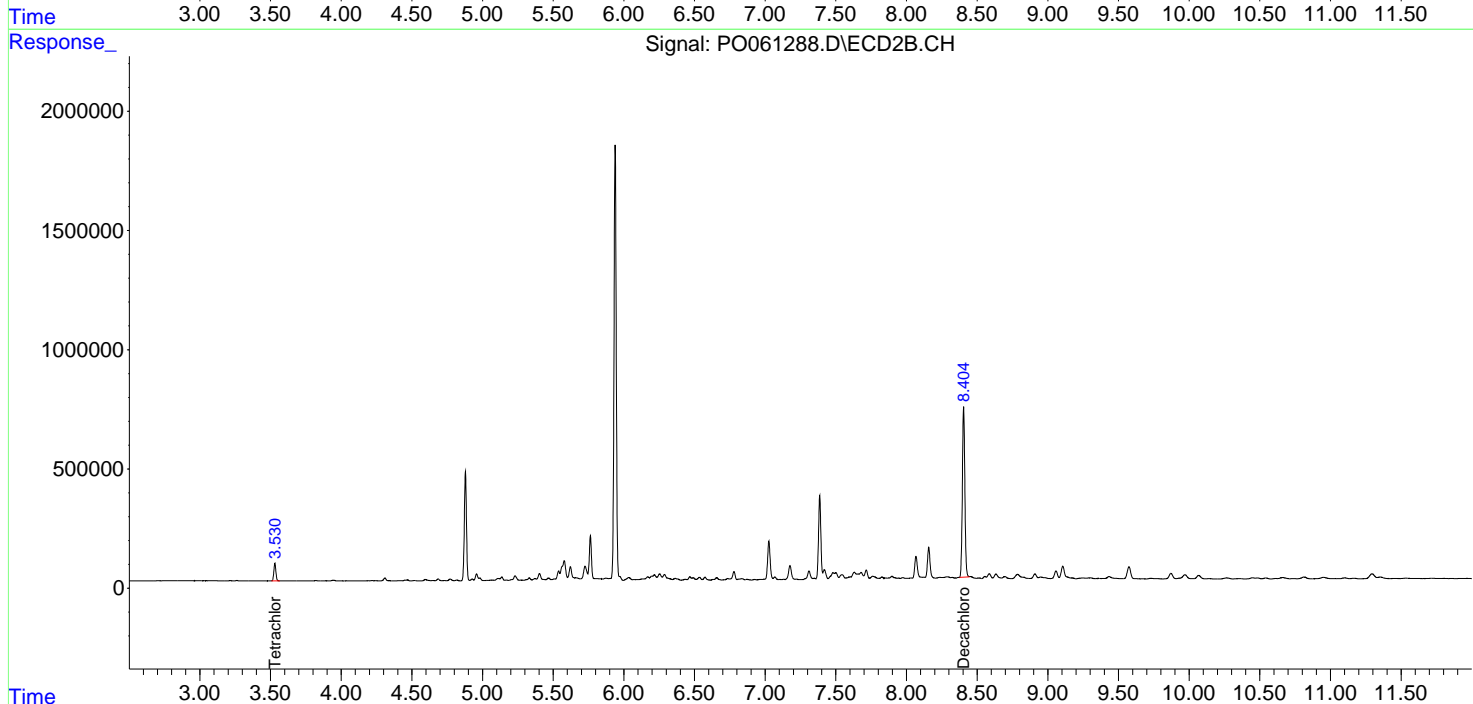
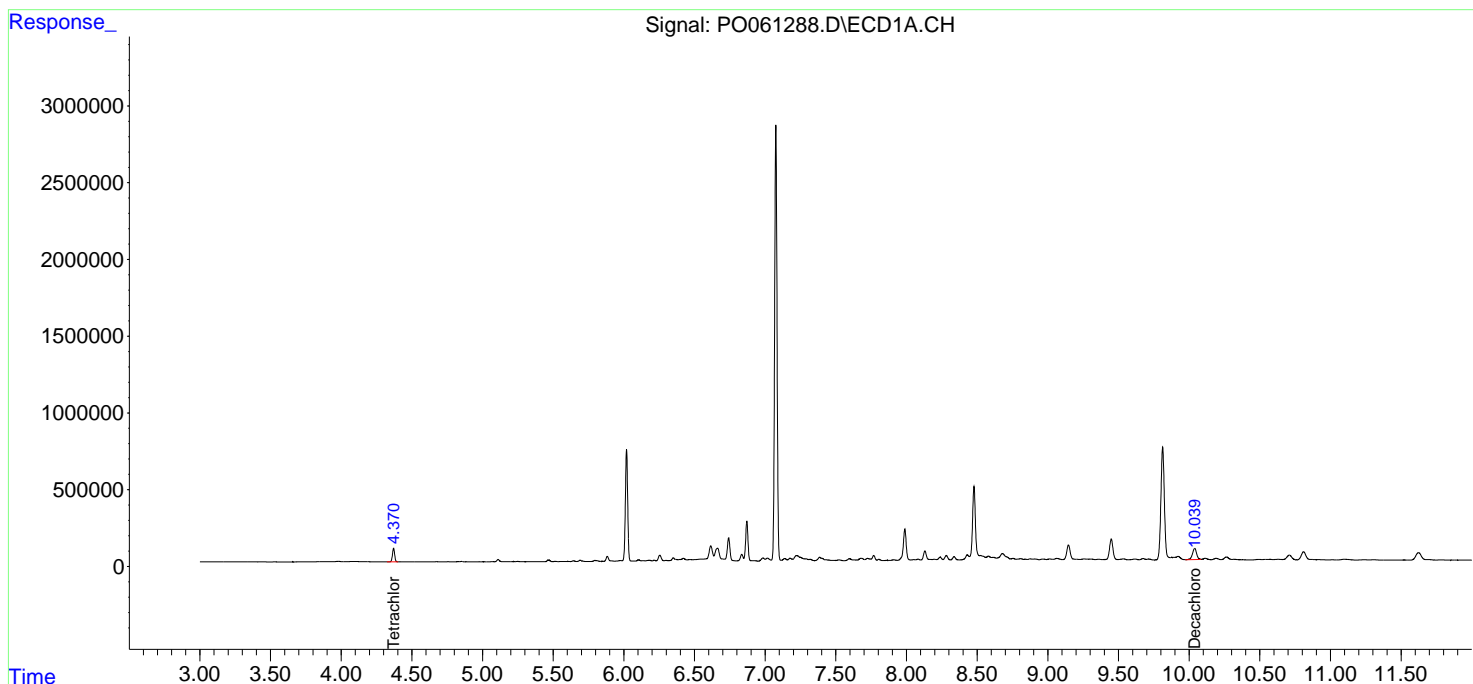
(f)=RT Delta > 1/2 Window (#)=Amounts differ by > 25% (m)=manual int.

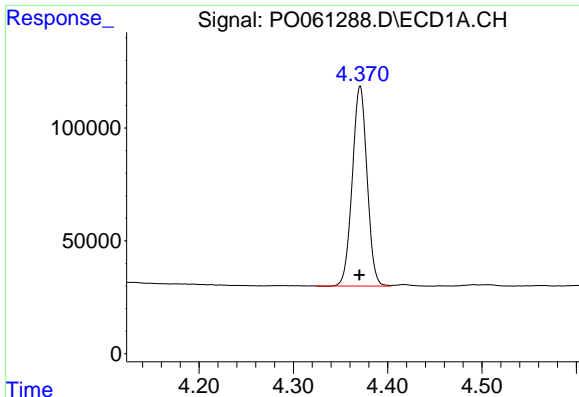
Data Path : Z:\pestpcbsrv\HPCHEM1\ECD_0\Data\P0092319\
 Data File : P0061288.D
 Signal(s) : Signal #1: ECD1A.CH Signal #2: ECD2B.CH
 Acq On : 23 Sep 2019 21:35
 Operator : SM/AJ
 Sample : K4997-09
 Misc :
 ALS Vial : 39 Sample Multiplier: 1

Instrument :
 ECD_0
 ClientSampleId :
 WC-12-091919

Integration File signal 1: autoint1.e
 Integration File signal 2: autoint2.e
 Quant Time: Sep 24 01:34:47 2019
 Quant Method : Z:\pestpcbsrv\HPCHEM1\ECD_0\methods\P0091319.M
 Quant Title : GC EXTRACTABLES
 QLast Update : Sat Sep 14 00:06:36 2019
 Response via : Initial Calibration
 Integrator: ChemStation 6890 Scale Mode: Small noise peaks clipped

Volume Inj. : 2 µl
 Signal #1 Phase : ZB-MR1 Signal #2 Phase: ZB-MR2
 Signal #1 Info : 30Mx0.32mmx 0.50µ Signal #2 Info : 30M x 0.32mm x 0.25µm

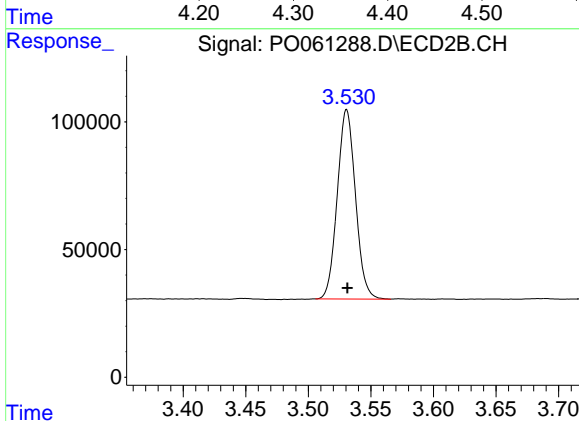




#1 Tetrachloro-m-xylene

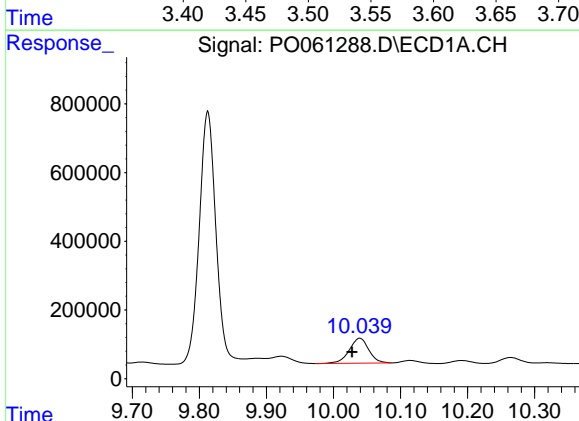
R.T.: 4.371 min
 Delta R.T.: 0.000 min
 Response: 964242
 Conc: 26.21 ng/ml

Instrument :
 ECD_O
 ClientSampleId :
 WC-12-091919



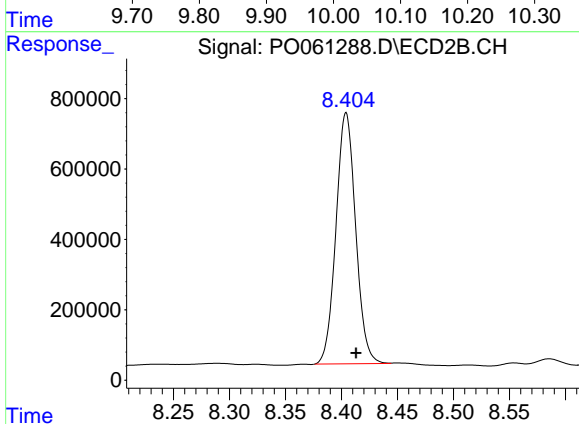
#1 Tetrachloro-m-xylene

R.T.: 3.531 min
 Delta R.T.: 0.000 min
 Response: 750839
 Conc: 26.89 ng/ml



#2 Decachlorobiphenyl

R.T.: 10.039 min
 Delta R.T.: 0.012 min
 Response: 1462820
 Conc: 31.84 ng/ml



#2 Decachlorobiphenyl

R.T.: 8.404 min
 Delta R.T.: -0.009 min
 Response: 8729991
 Conc: 249.06 ng/ml