

Data Path : Z:\pestpcbsrv\HPCHEM1\ECD_0\Data\P0092320\
 Data File : P0071555.D
 Signal(s) : Signal #1: ECD1A.CH Signal #2: ECD2B.CH
 Acq On : 22 Sep 2020 21:12
 Operator : DD\AJ
 Sample : AR1248ICC500
 Misc :
 ALS Vial : 15 Sample Multiplier: 1

Instrument :
 ECD_0
 ClientSampleId :
 AR1248ICC500

Integration File signal 1: autoint1.e
 Integration File signal 2: autoint2.e
 Quant Time: Sep 23 07:28:27 2020
 Quant Method : Z:\pestpcbsrv\HPCHEM1\ECD_0\methods\P0092320.M
 Quant Title : GC EXTRACTABLES
 QLast Update : Wed Sep 23 07:28:06 2020
 Response via : Initial Calibration
 Integrator: ChemStation 6890 Scale Mode: Small noise peaks clipped

Volume Inj. : 2 µl
 Signal #1 Phase : ZB-MR1 Signal #2 Phase: ZB-MR2
 Signal #1 Info : 30Mx0.32mmx 0.50µ Signal #2 Info : 30M x 0.32mm x 0.25µm

Compound	RT#1	RT#2	Resp#1	Resp#2	ng/ml	ng/ml

System Monitoring Compounds						
1) SA Tetrachlo...	4.341	3.524	3632488	1761798	50.000	50.000
2) SA Decachlor...	9.955	8.704	5032214	2594188	50.000	50.000
Target Compounds						
21) L5 AR-1248-1	5.644	4.748	899077	454418	500.000	500.000
22) L5 AR-1248-2	5.933	5.008	1198755	640661	500.000	500.000
23) L5 AR-1248-3	6.144	5.050	1459940	604403	500.000	500.000
24) L5 AR-1248-4	6.569	5.228	1934262	758508	500.000	500.000
25) L5 AR-1248-5	6.606	5.644	1802306	814891	500.000	500.000

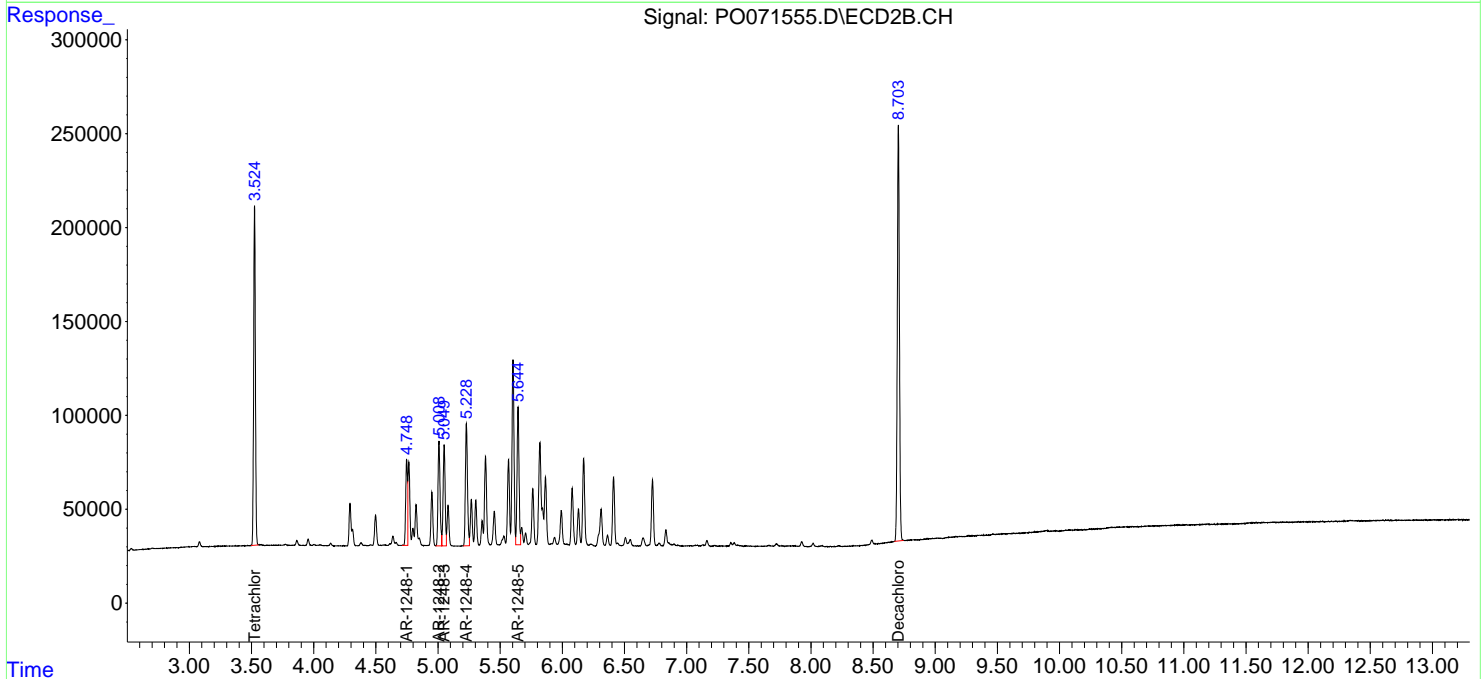
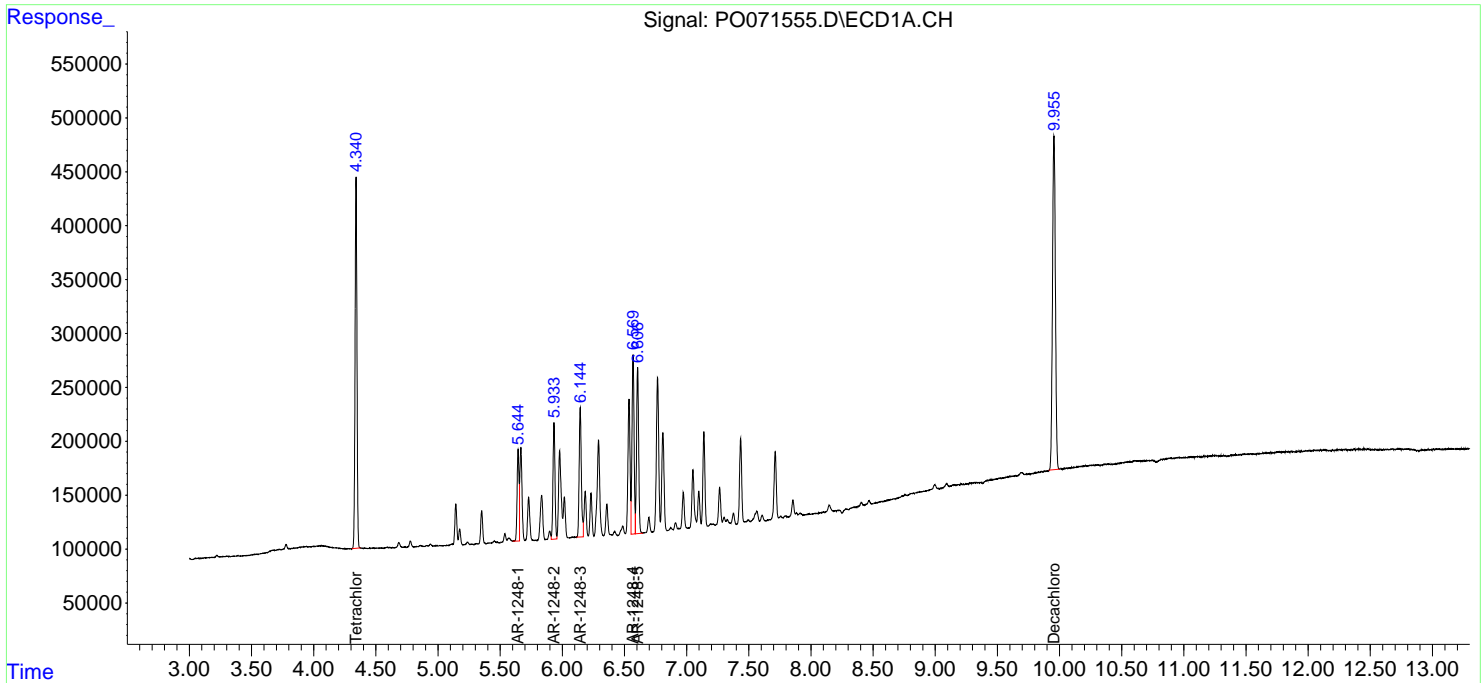
(f)=RT Delta > 1/2 Window (#)=Amounts differ by > 25% (m)=manual int.

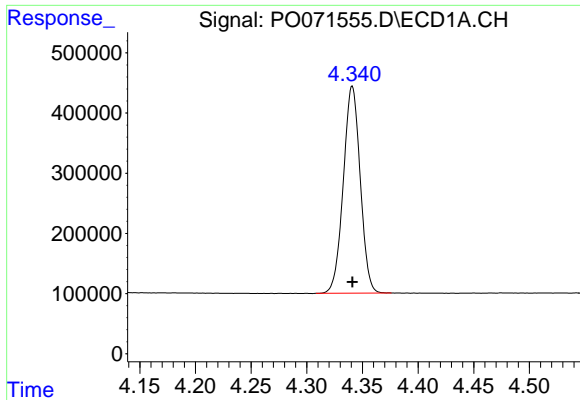
Data Path : Z:\pestpcbsrv\HPCHEM1\ECD_O\Data\PO092320\
 Data File : PO071555.D
 Signal(s) : Signal #1: ECD1A.CH Signal #2: ECD2B.CH
 Acq On : 22 Sep 2020 21:12
 Operator : DD\AJ
 Sample : AR1248ICC500
 Misc :
 ALS Vial : 15 Sample Multiplier: 1

Instrument :
 ECD_O
ClientSampleID :
 AR1248ICC500

Integration File signal 1: autoint1.e
 Integration File signal 2: autoint2.e
 Quant Time: Sep 23 07:28:27 2020
 Quant Method : Z:\pestpcbsrv\HPCHEM1\ECD_O\methods\PO092320.M
 Quant Title : GC EXTRACTABLES
 QLast Update : Wed Sep 23 07:28:06 2020
 Response via : Initial Calibration
 Integrator: ChemStation 6890 Scale Mode: Small noise peaks clipped

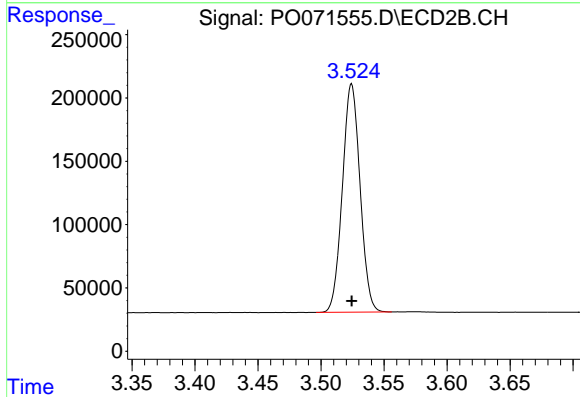
Volume Inj. : 2 µl
 Signal #1 Phase : ZB-MR1 Signal #2 Phase: ZB-MR2
 Signal #1 Info : 30Mx0.32mmx 0.50µ Signal #2 Info : 30M x 0.32mm x 0.25µm



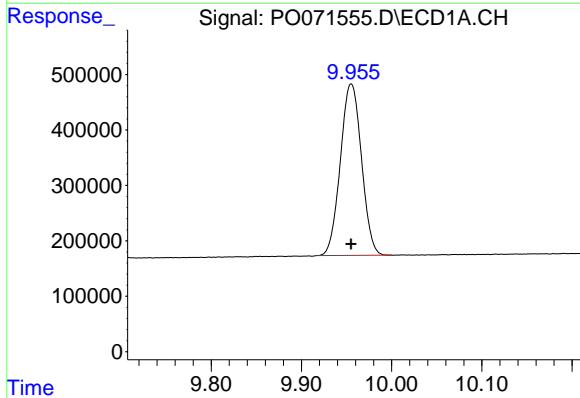


#1 Tetrachloro-m-xylene
 R.T.: 4.341 min
 Delta R.T.: 0.000 min
 Response: 3632488
 Conc: 50.00 ng/ml

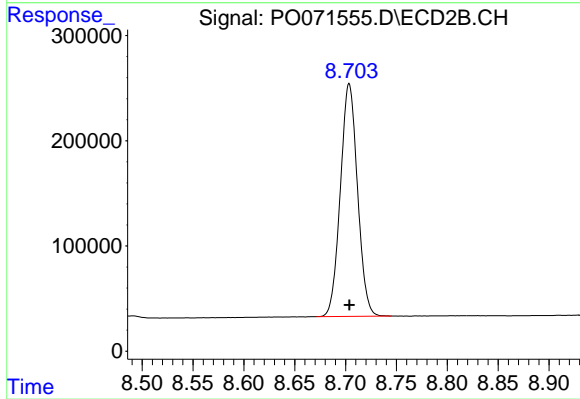
Instrument :
 ECD_O
 ClientSampleId :
 AR1248ICC500



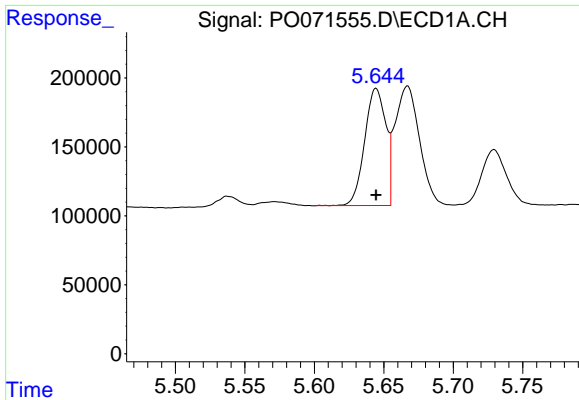
#1 Tetrachloro-m-xylene
 R.T.: 3.524 min
 Delta R.T.: 0.000 min
 Response: 1761798
 Conc: 50.00 ng/ml



#2 Decachlorobiphenyl
 R.T.: 9.955 min
 Delta R.T.: 0.000 min
 Response: 5032214
 Conc: 50.00 ng/ml



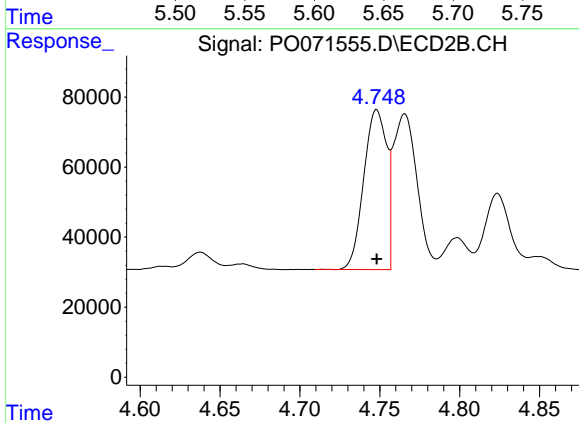
#2 Decachlorobiphenyl
 R.T.: 8.704 min
 Delta R.T.: 0.000 min
 Response: 2594188
 Conc: 50.00 ng/ml



#21 AR-1248-1

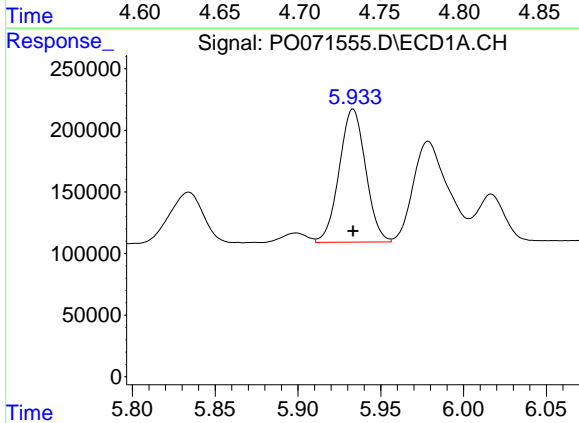
R.T.: 5.644 min
 Delta R.T.: 0.000 min
 Response: 899077
 Conc: 500.00 ng/ml

Instrument :
 ECD_O
 ClientSampleId :
 AR1248ICC500



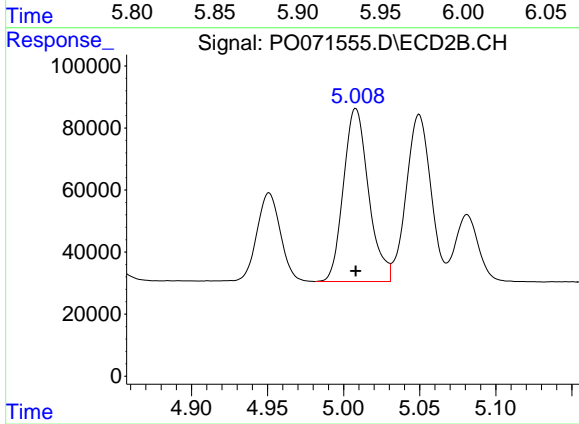
#21 AR-1248-1

R.T.: 4.748 min
 Delta R.T.: 0.000 min
 Response: 454418
 Conc: 500.00 ng/ml



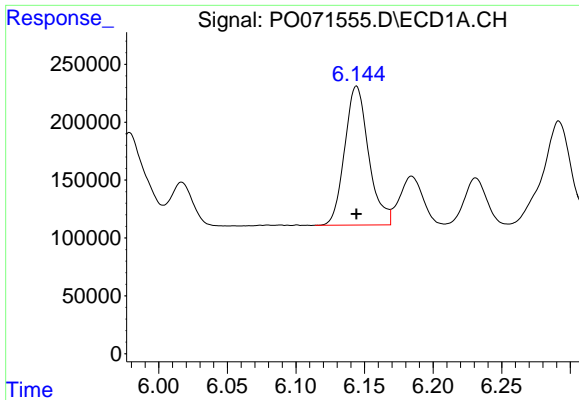
#22 AR-1248-2

R.T.: 5.933 min
 Delta R.T.: 0.000 min
 Response: 1198755
 Conc: 500.00 ng/ml



#22 AR-1248-2

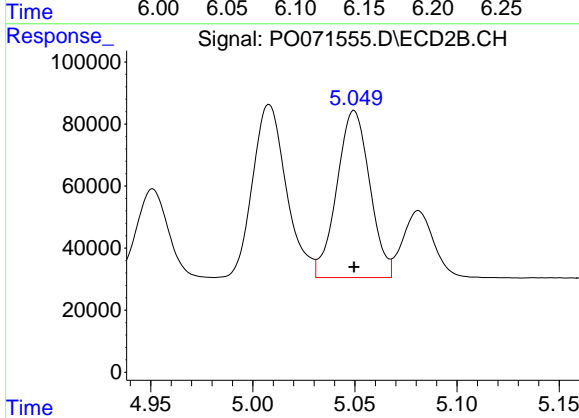
R.T.: 5.008 min
 Delta R.T.: 0.000 min
 Response: 640661
 Conc: 500.00 ng/ml



#23 AR-1248-3

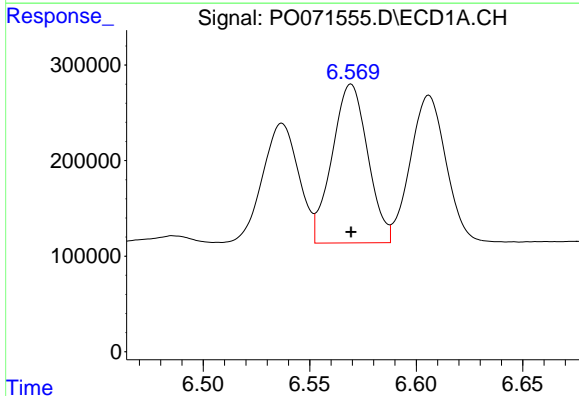
R.T.: 6.144 min
 Delta R.T.: 0.000 min
 Response: 1459940
 Conc: 500.00 ng/ml

Instrument :
 ECD_O
 ClientSampled :
 AR1248ICC500



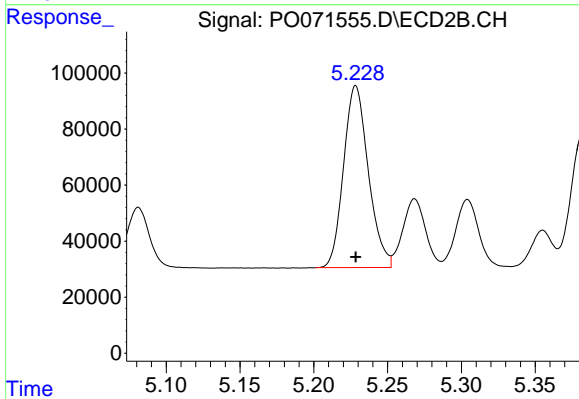
#23 AR-1248-3

R.T.: 5.050 min
 Delta R.T.: 0.000 min
 Response: 604403
 Conc: 500.00 ng/ml



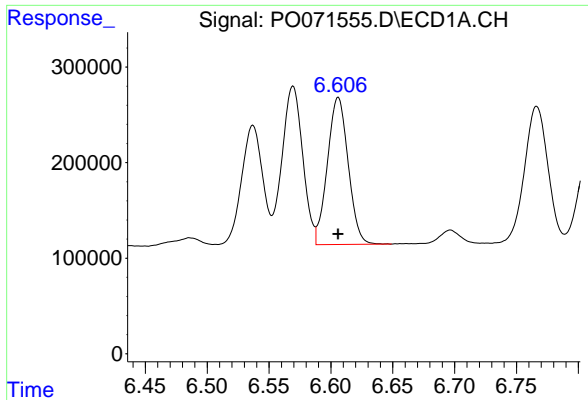
#24 AR-1248-4

R.T.: 6.569 min
 Delta R.T.: 0.000 min
 Response: 1934262
 Conc: 500.00 ng/ml



#24 AR-1248-4

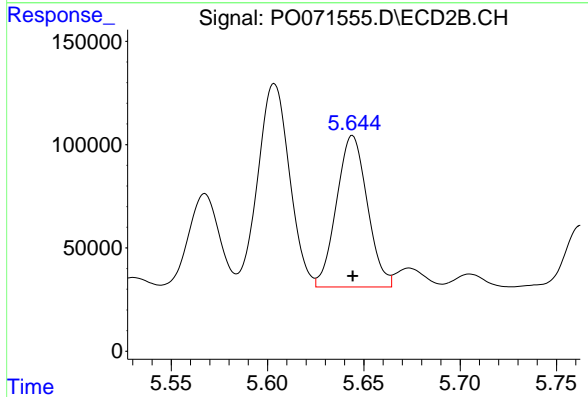
R.T.: 5.228 min
 Delta R.T.: 0.000 min
 Response: 758508
 Conc: 500.00 ng/ml



#25 AR-1248-5

R.T.: 6.606 min
Delta R.T.: 0.000 min
Response: 1802306
Conc: 500.00 ng/ml

Instrument :
ECD_O
ClientSampleId :
AR1248ICC500



#25 AR-1248-5

R.T.: 5.644 min
Delta R.T.: 0.000 min
Response: 814891
Conc: 500.00 ng/ml