

Data Path : Z:\pestpcbsrv\HPCHEM1\ECD_0\Data\P0092324\
 Data File : PO106799.D
 Signal(s) : Signal #1: ECD1A.ch Signal #2: ECD2B.ch
 Acq On : 23 Sep 2024 20:36
 Operator : YP/AJ
 Sample : PB163603BL
 Misc :
 ALS Vial : 21 Sample Multiplier: 1

Instrument :
 ECD_0
 ClientSampleId :
 PB163603BL

Integration File signal 1: autoint1.e
 Integration File signal 2: autoint2.e
 Quant Time: Sep 24 01:49:42 2024
 Quant Method : Z:\pestpcbsrv\HPCHEM1\ECD_0\methods\P0090924.M
 Quant Title : GC EXTRACTABLES
 QLast Update : Tue Sep 10 09:57:51 2024
 Response via : Initial Calibration
 Integrator: ChemStation

Volume Inj. : 2 µl
 Signal #1 Phase : ZB-MR2 Signal #2 Phase: ZB-MR2
 Signal #1 Info : 30Mx0.32mmx 0.50µ Signal #2 Info : 30M x 0.32mm x 0.25µm

Compound	RT#1	RT#2	Resp#1	Resp#2	ng/ml	ng/ml
----------	------	------	--------	--------	-------	-------

System Monitoring Compounds

1) SA Tetrachlo...	4.449	3.710	147.1E6	61407608	19.615	22.989
2) SA Decachlor...	10.194	8.733	95871603	43771425	19.396	21.883

Target Compounds

3) L1 AR-1016-1	5.642	4.809	274556	21551	1.075	0.226 #
4) L1 AR-1016-2	5.642	4.820	274556	46684	0.771	0.365 #
5) L1 AR-1016-3	5.702	5.012	201681	25883	0.925	0.375 #
6) L1 AR-1016-4	5.808	5.043	363714	79823	2.051	1.503 #
7) L1 AR-1016-5	6.085	5.269	447762	64265	2.594	0.900 #
8) L2 AR-1221-1	4.660	3.925	57818	32996	0.626	1.091 #
9) L2 AR-1221-2	4.755	4.011	2028652	854363	28.632	37.742 #
10) L2 AR-1221-3	4.817	4.097	321144	45457	1.586	0.640 #
11) L3 AR-1232-1	4.817	4.097	321144	45457	1.837	0.753 #
12) L3 AR-1232-2	5.359	4.820	3055585	46684	32.757	0.803 #
13) L3 AR-1232-3	5.642	5.012	274556	25883	1.674	0.831 #
14) L3 AR-1232-4	5.808	5.076	363714	75533	4.417	2.764 #
15) L3 AR-1232-5	5.899	5.269	219151	64265	3.452	2.193 #
16) L4 AR-1242-1	5.642	4.809	274556	21551	1.371	0.292 #
17) L4 AR-1242-2	5.642	4.820	274556	46684	0.997	0.477 #
18) L4 AR-1242-3	5.702	5.012	201681	25883	1.176	0.482 #
19) L4 AR-1242-4	5.808	5.076	363714	75533	2.613	1.424 #
20) L4 AR-1242-5	6.517	5.609	3010388	424344	21.645	6.076 #
21) L5 AR-1248-1	5.642	4.809	274556	21551	1.739	0.373 #
22) L5 AR-1248-2	5.899	5.043	219151	79823	1.010	1.021
23) L5 AR-1248-3	6.085	5.076	447762	75533	1.875	0.919 #
24) L5 AR-1248-4	6.508	5.269	998125	64265	3.801	0.655 #
25) L5 AR-1248-5	6.517	5.641	3010388	284500	12.004	2.937 #
26) L6 AR-1254-1	6.449	5.609	7821423	424344	30.012	3.013 #
27) L6 AR-1254-2	6.663	5.753	2848022	279563	7.309	2.194 #
28) L6 AR-1254-3	7.040	6.177	6718948	116364	17.232	0.578 #
29) L6 AR-1254-4	7.325	6.394	6590483	190155	22.680	1.528 #
30) L6 AR-1254-5	7.766	6.785	2889266	622412	9.494	3.475 #
31) L7 AR-1260-1	7.224	6.303	2598472	28916	9.210	0.224 #
32) L7 AR-1260-2	7.479	6.490	4972235	184222	14.904	1.161 #
33) L7 AR-1260-3	7.830	6.624	1438298	776361	6.372	5.033
34) L7 AR-1260-4	8.054	7.122	775667	63635	2.804	0.599 #
35) L7 AR-1260-5	8.352	7.359	2153604	1170275	4.363	4.550
36) L8 AR-1262-1	7.740	6.785	6735133	622412	27.438	6.332 #
37) L8 AR-1262-2	8.352	7.087	2153604	71787	3.413	0.457 #
38) L8 AR-1262-3	8.681	7.611	1190743	371282	2.708	3.051
39) L8 AR-1262-4	8.784	7.699	143206	130007	0.431	0.550 #
40) L8 AR-1262-5	9.438	8.126f	61640	36167	0.264	0.346 #
41) L9 AR-1268-1	8.681	7.611	1190743	371282	1.604	1.027 #

Data Path : Z:\pestpcbsrv\HPCHEM1\ECD_0\Data\P0092324\
 Data File : P0106799.D
 Signal(s) : Signal #1: ECD1A.ch Signal #2: ECD2B.ch
 Acq On : 23 Sep 2024 20:36
 Operator : YP/AJ
 Sample : PB163603BL
 Misc :
 ALS Vial : 21 Sample Multiplier: 1

Instrument :
 ECD_0
 ClientSampleId :
 PB163603BL

Integration File signal 1: autoint1.e
 Integration File signal 2: autoint2.e
 Quant Time: Sep 24 01:49:42 2024
 Quant Method : Z:\pestpcbsrv\HPCHEM1\ECD_0\methods\P0090924.M
 Quant Title : GC EXTRACTABLES
 QLast Update : Tue Sep 10 09:57:51 2024
 Response via : Initial Calibration
 Integrator: ChemStation

Volume Inj. : 2 µl
 Signal #1 Phase : ZB-MR1 Signal #2 Phase: ZB-MR2
 Signal #1 Info : 30Mx0.32mmx 0.50µ Signal #2 Info : 30M x 0.32mm x 0.25µm

	Compound	RT#1	RT#2	Resp#1	Resp#2	ng/ml	ng/ml
42)	L9 AR-1268-2	8.784	7.699	143206	130007	0.213	0.398 #
44)	L9 AR-1268-4	9.438	8.126f	61640	36167	0.249	0.318 #
45)	L9 AR-1268-5	9.865	8.474	1035834	739821	0.562	0.879 #

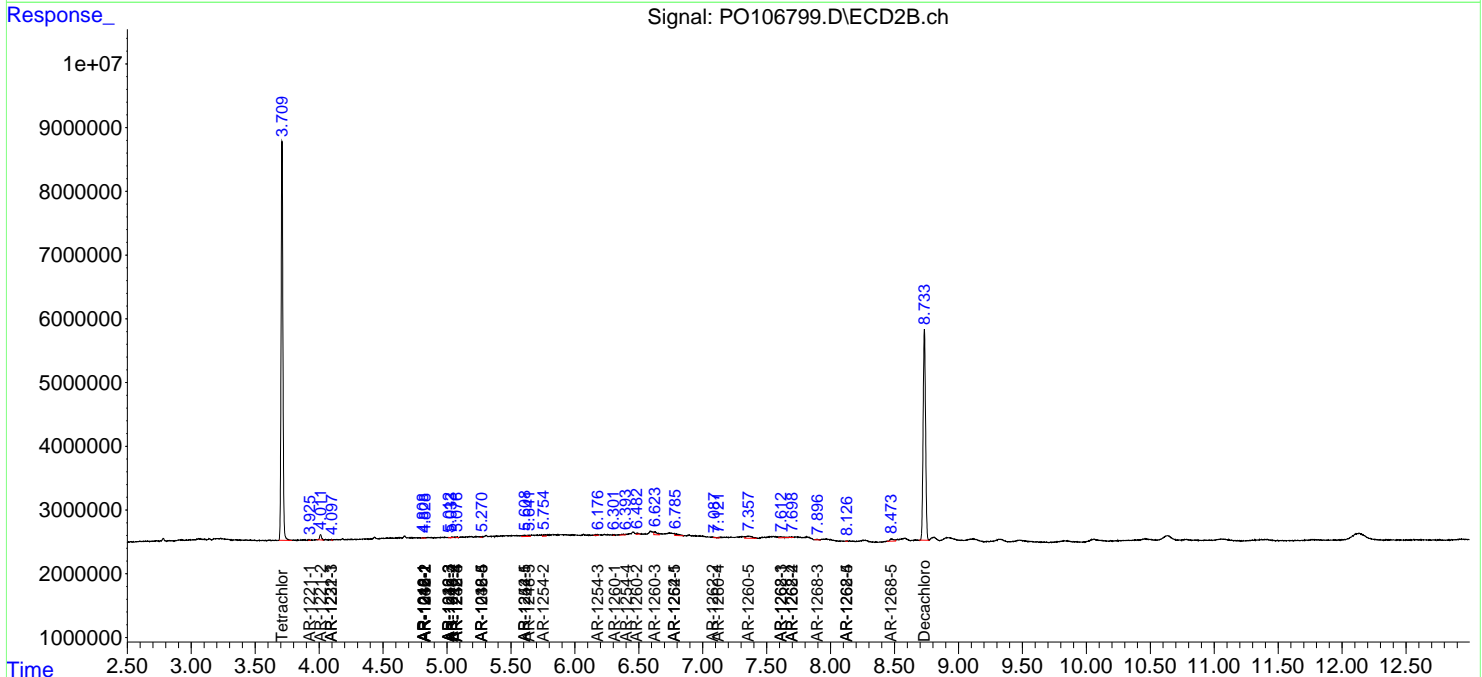
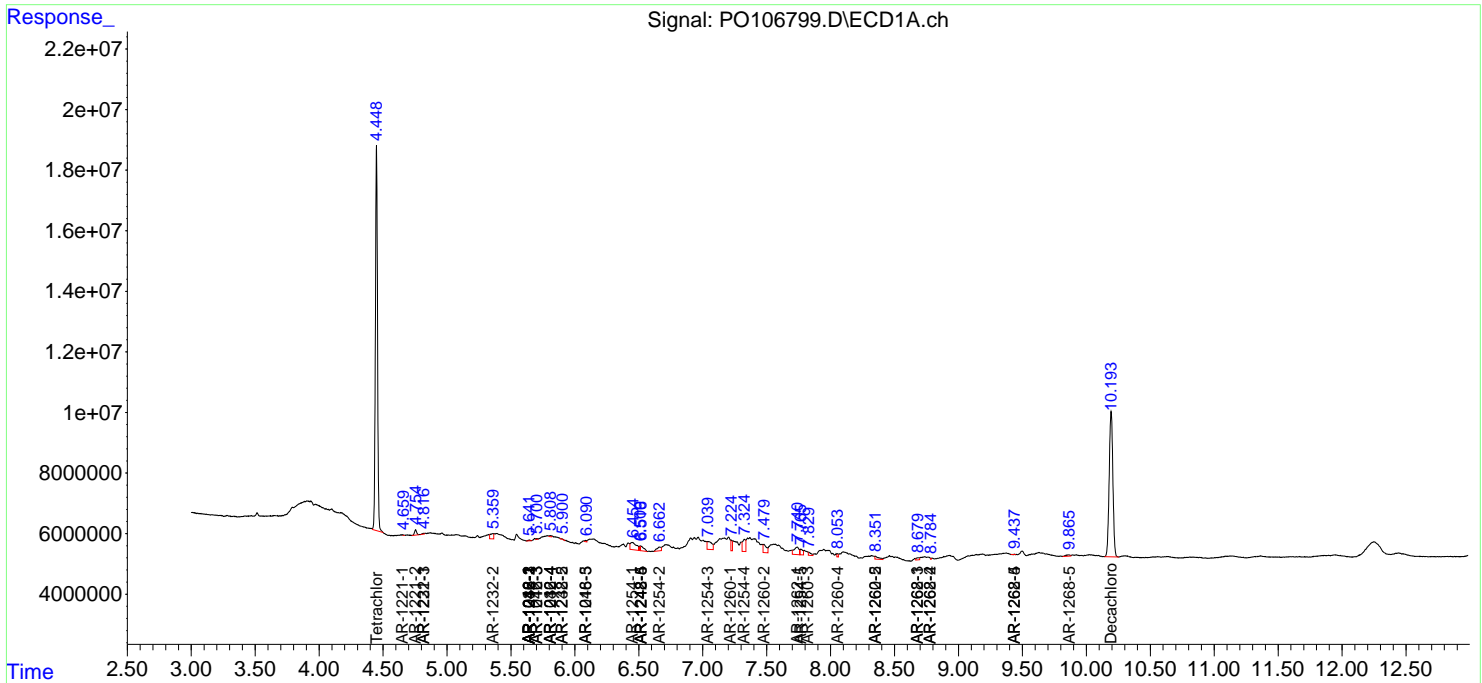
(f)=RT Delta > 1/2 Window (#)=Amounts differ by > 25% (m)=manual int.

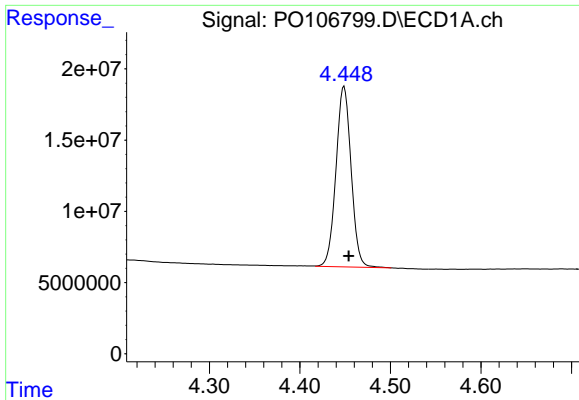
Data Path : Z:\pestpcbsrv\HPCHEM1\ECD_O\Data\PO092324\
 Data File : PO106799.D
 Signal(s) : Signal #1: ECD1A.ch Signal #2: ECD2B.ch
 Acq On : 23 Sep 2024 20:36
 Operator : YP/AJ
 Sample : PB163603BL
 Misc :
 ALS Vial : 21 Sample Multiplier: 1

Instrument :
 ECD_O
 ClientSampleId :
 PB163603BL

Integration File signal 1: autoint1.e
 Integration File signal 2: autoint2.e
 Quant Time: Sep 24 01:49:42 2024
 Quant Method : Z:\pestpcbsrv\HPCHEM1\ECD_O\methods\PO090924.M
 Quant Title : GC EXTRACTABLES
 QLast Update : Tue Sep 10 09:57:51 2024
 Response via : Initial Calibration
 Integrator: ChemStation

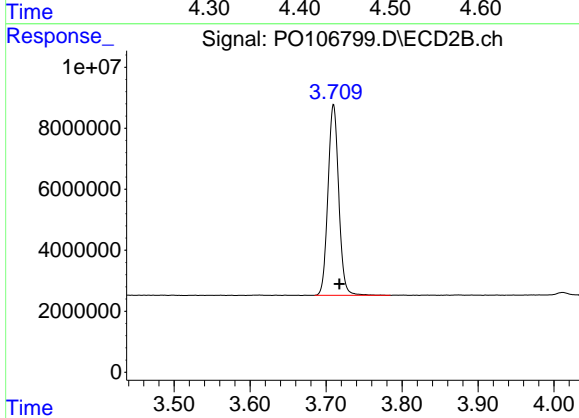
Volume Inj. : 2 µl
 Signal #1 Phase : ZB-MR1 Signal #2 Phase: ZB-MR2
 Signal #1 Info : 30Mx0.32mmx 0.50µ Signal #2 Info : 30M x 0.32mm x 0.25µm



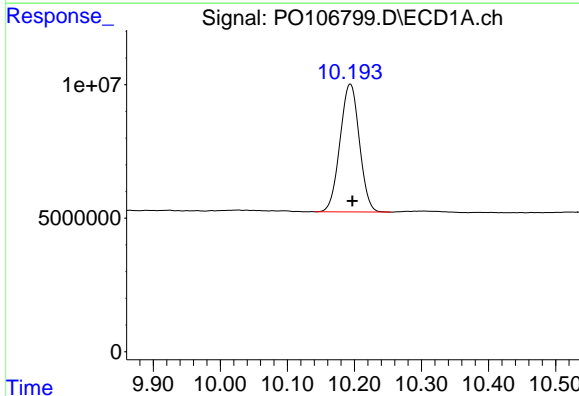


#1 Tetrachloro-m-xylene
 R.T.: 4.449 min
 Delta R.T.: -0.005 min
 Response: 147140004
 Conc: 19.62 ng/ml

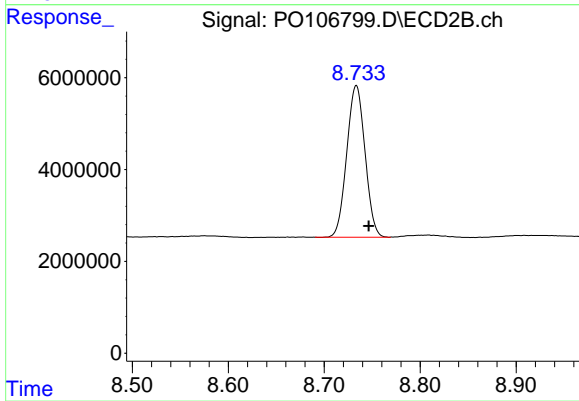
Instrument :
 ECD_O
 ClientSampleId :
 PB163603BL



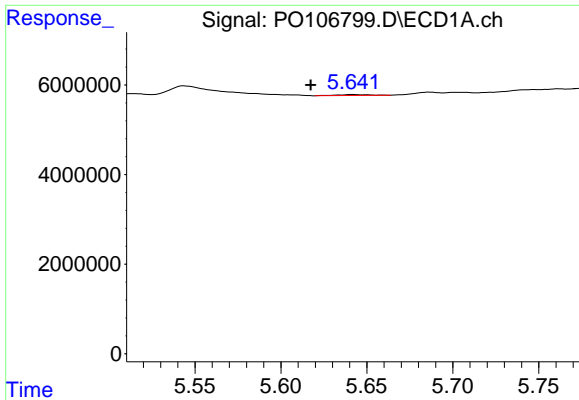
#1 Tetrachloro-m-xylene
 R.T.: 3.710 min
 Delta R.T.: -0.008 min
 Response: 61407608
 Conc: 22.99 ng/ml



#2 Decachlorobiphenyl
 R.T.: 10.194 min
 Delta R.T.: -0.003 min
 Response: 95871603
 Conc: 19.40 ng/ml



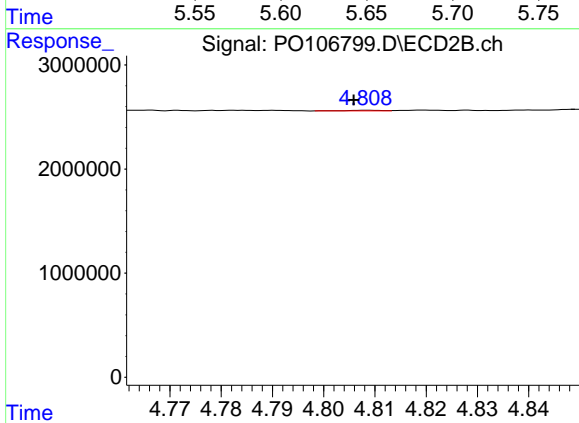
#2 Decachlorobiphenyl
 R.T.: 8.733 min
 Delta R.T.: -0.013 min
 Response: 43771425
 Conc: 21.88 ng/ml



#3 AR-1016-1

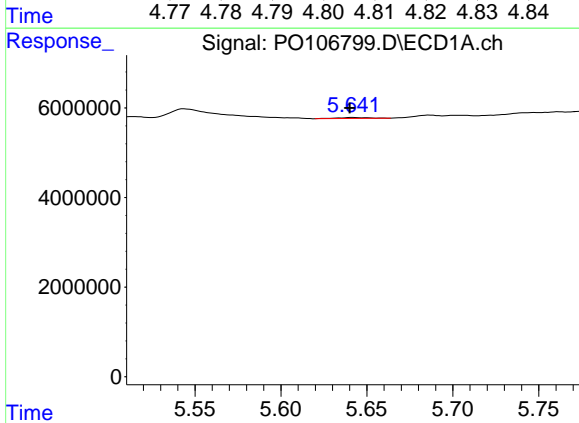
R.T.: 5.642 min
 Delta R.T.: 0.024 min
 Response: 274556
 Conc: 1.07 ng/ml

Instrument :
 ECD_O
 ClientSampleId :
 PB163603BL



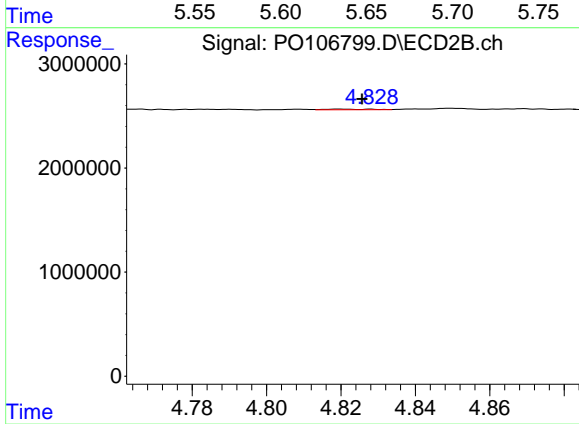
#3 AR-1016-1

R.T.: 4.809 min
 Delta R.T.: 0.003 min
 Response: 21551
 Conc: 0.23 ng/ml



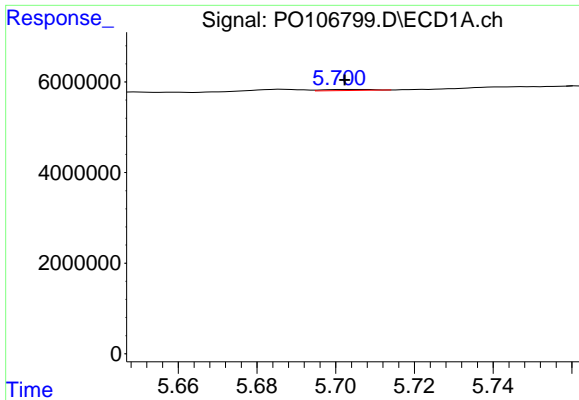
#4 AR-1016-2

R.T.: 5.642 min
 Delta R.T.: 0.002 min
 Response: 274556
 Conc: 0.77 ng/ml



#4 AR-1016-2

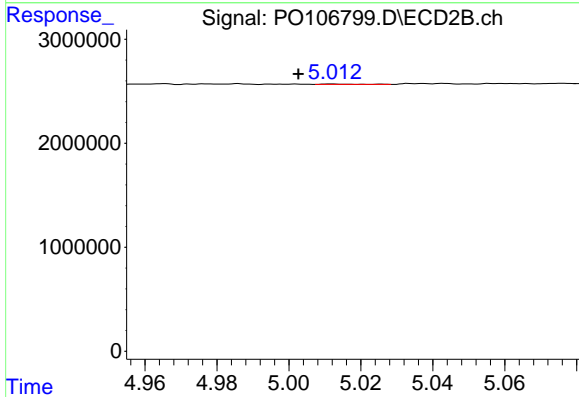
R.T.: 4.820 min
 Delta R.T.: -0.006 min
 Response: 46684
 Conc: 0.37 ng/ml



#5 AR-1016-3

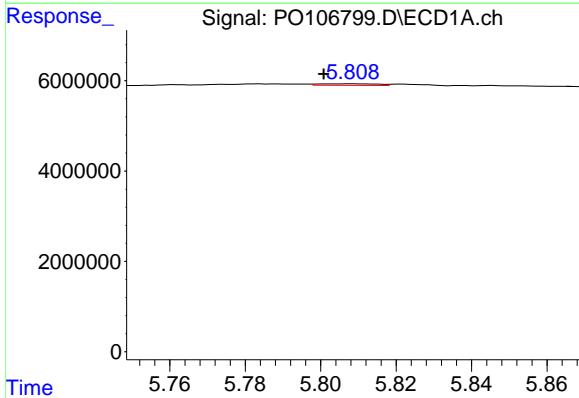
R.T.: 5.702 min
 Delta R.T.: 0.000 min
 Response: 201681
 Conc: 0.93 ng/ml

Instrument :
 ECD_O
 ClientSampleId :
 PB163603BL



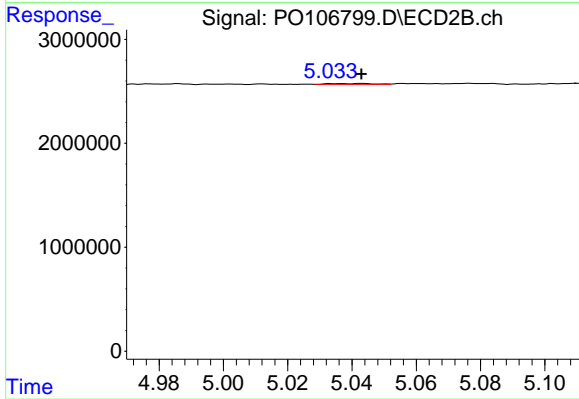
#5 AR-1016-3

R.T.: 5.012 min
 Delta R.T.: 0.009 min
 Response: 25883
 Conc: 0.38 ng/ml



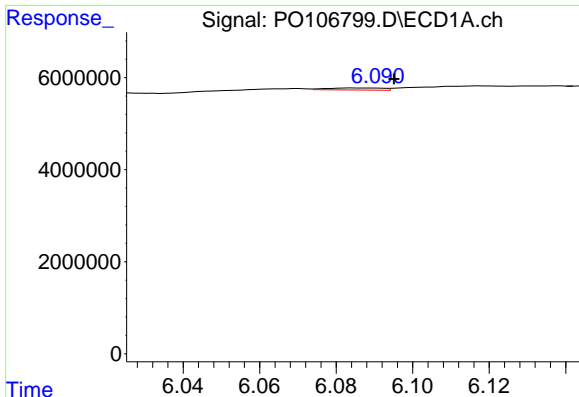
#6 AR-1016-4

R.T.: 5.808 min
 Delta R.T.: 0.007 min
 Response: 363714
 Conc: 2.05 ng/ml



#6 AR-1016-4

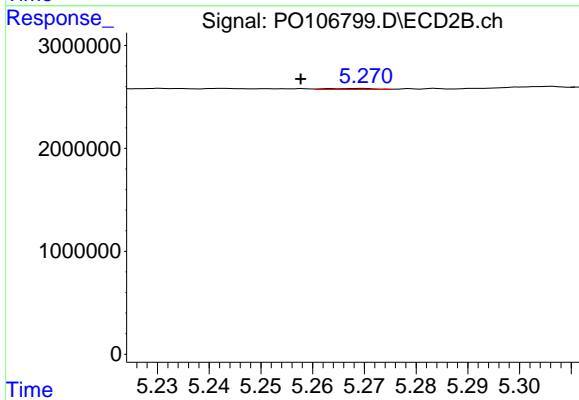
R.T.: 5.043 min
 Delta R.T.: 0.000 min
 Response: 79823
 Conc: 1.50 ng/ml



#7 AR-1016-5

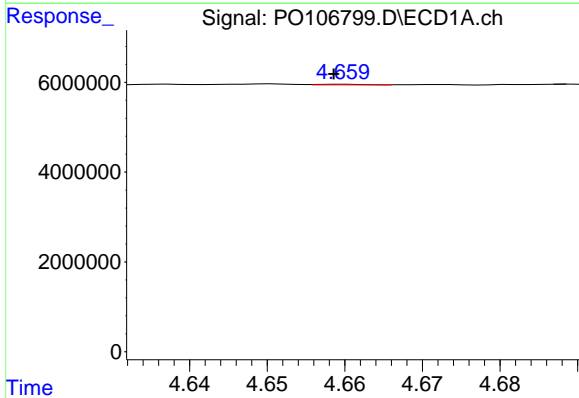
R.T.: 6.085 min
 Delta R.T.: -0.010 min
 Response: 447762
 Conc: 2.59 ng/ml

Instrument :
 ECD_O
 ClientSampleId :
 PB163603BL



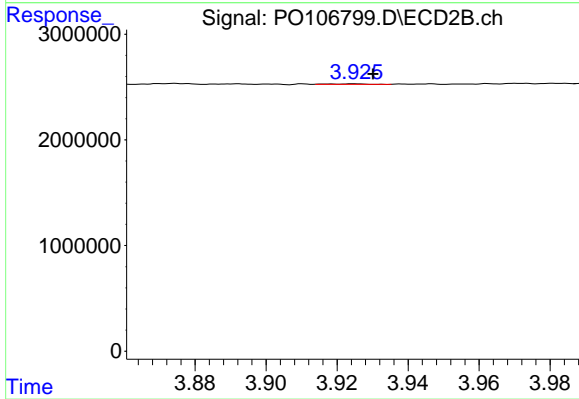
#7 AR-1016-5

R.T.: 5.269 min
 Delta R.T.: 0.012 min
 Response: 64265
 Conc: 0.90 ng/ml



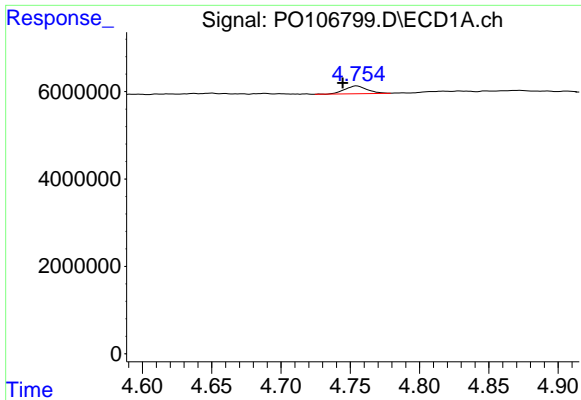
#8 AR-1221-1

R.T.: 4.660 min
 Delta R.T.: 0.001 min
 Response: 57818
 Conc: 0.63 ng/ml



#8 AR-1221-1

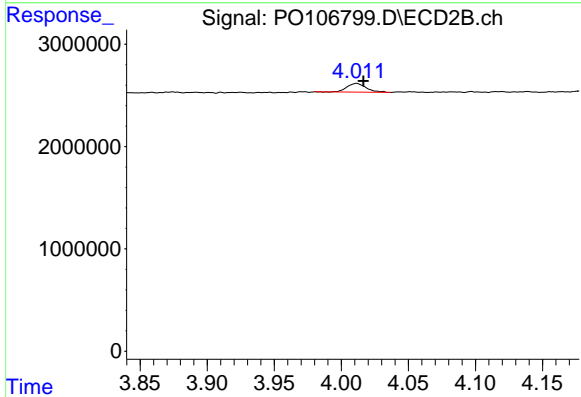
R.T.: 3.925 min
 Delta R.T.: -0.005 min
 Response: 32996
 Conc: 1.09 ng/ml



#9 AR-1221-2

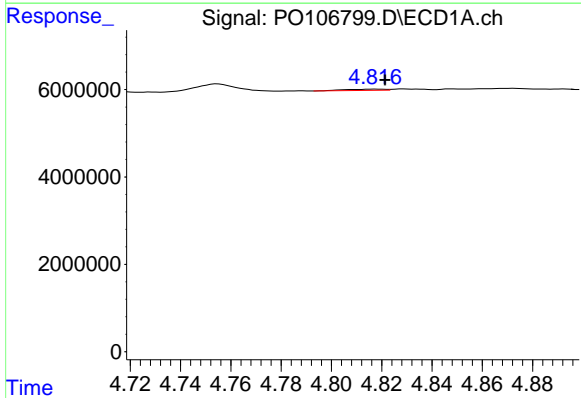
R.T.: 4.755 min
 Delta R.T.: 0.010 min
 Response: 2028652
 Conc: 28.63 ng/ml

Instrument :
 ECD_O
 ClientSampleId :
 PB163603BL



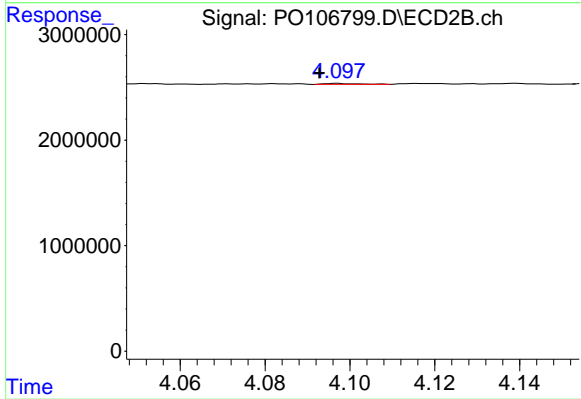
#9 AR-1221-2

R.T.: 4.011 min
 Delta R.T.: -0.005 min
 Response: 854363
 Conc: 37.74 ng/ml



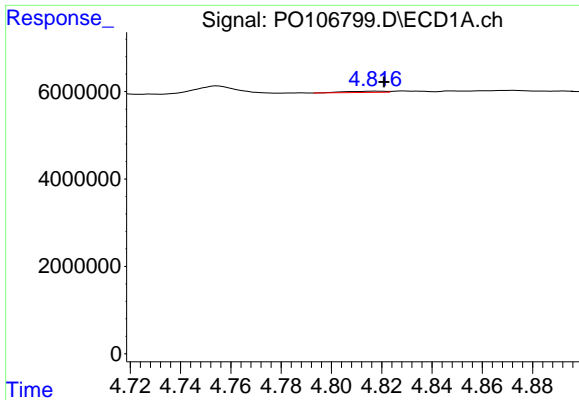
#10 AR-1221-3

R.T.: 4.817 min
 Delta R.T.: -0.005 min
 Response: 321144
 Conc: 1.59 ng/ml



#10 AR-1221-3

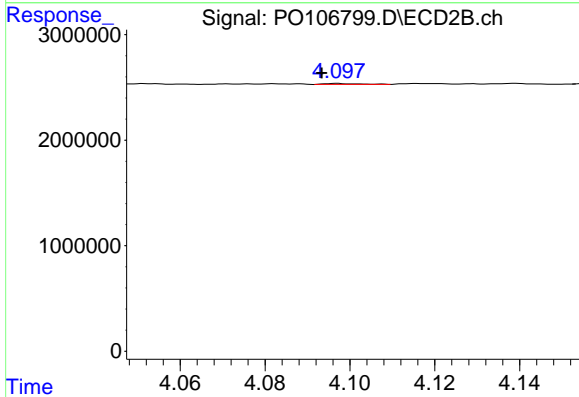
R.T.: 4.097 min
 Delta R.T.: 0.004 min
 Response: 45457
 Conc: 0.64 ng/ml



#11 AR-1232-1

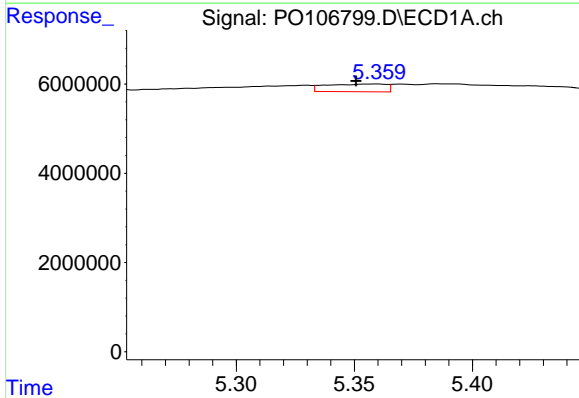
R.T.: 4.817 min
 Delta R.T.: -0.004 min
 Response: 321144
 Conc: 1.84 ng/ml

Instrument :
 ECD_O
 ClientSampleId :
 PB163603BL



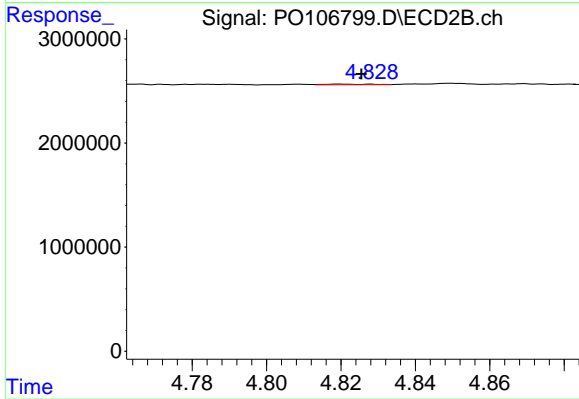
#11 AR-1232-1

R.T.: 4.097 min
 Delta R.T.: 0.004 min
 Response: 45457
 Conc: 0.75 ng/ml



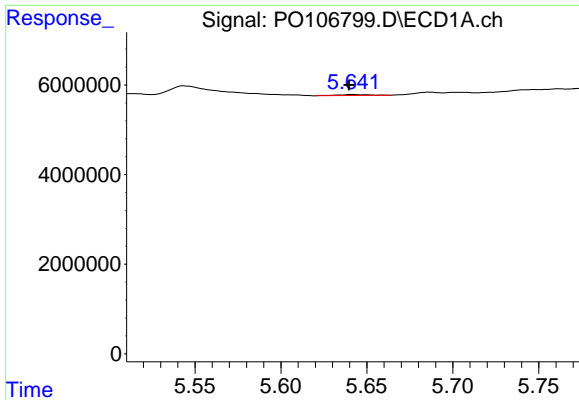
#12 AR-1232-2

R.T.: 5.359 min
 Delta R.T.: 0.008 min
 Response: 3055585
 Conc: 32.76 ng/ml



#12 AR-1232-2

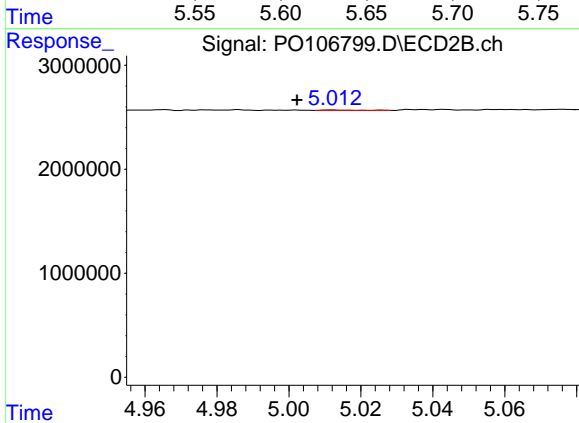
R.T.: 4.820 min
 Delta R.T.: -0.006 min
 Response: 46684
 Conc: 0.80 ng/ml



#13 AR-1232-3

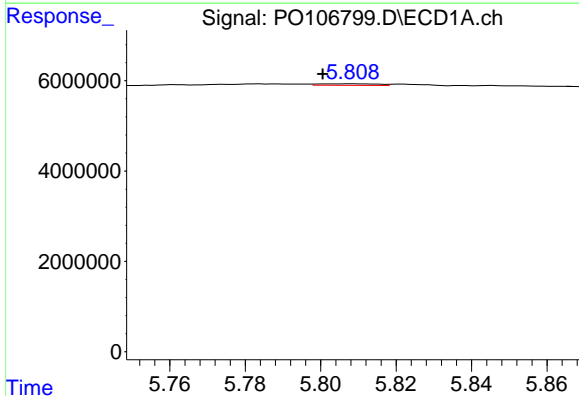
R.T.: 5.642 min
 Delta R.T.: 0.002 min
 Response: 274556
 Conc: 1.67 ng/ml

Instrument :
 ECD_O
 ClientSampleId :
 PB163603BL



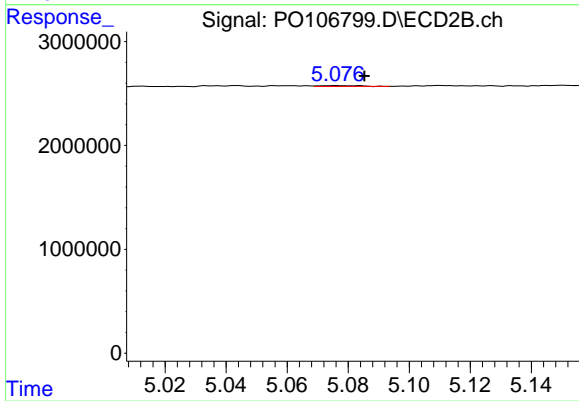
#13 AR-1232-3

R.T.: 5.012 min
 Delta R.T.: 0.010 min
 Response: 25883
 Conc: 0.83 ng/ml



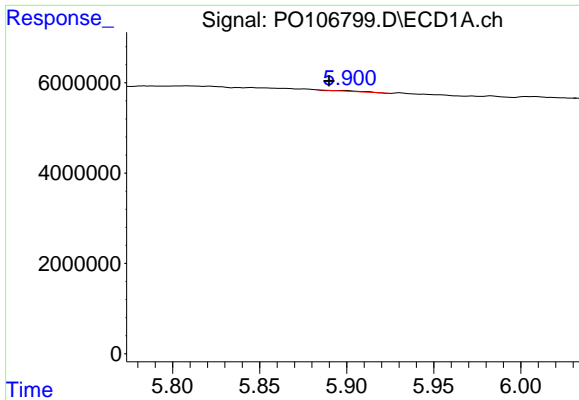
#14 AR-1232-4

R.T.: 5.808 min
 Delta R.T.: 0.008 min
 Response: 363714
 Conc: 4.42 ng/ml



#14 AR-1232-4

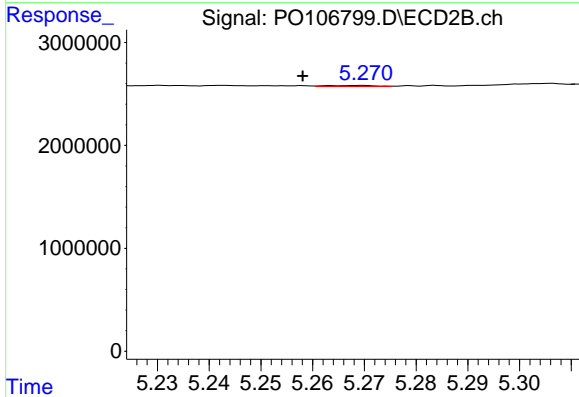
R.T.: 5.076 min
 Delta R.T.: -0.009 min
 Response: 75533
 Conc: 2.76 ng/ml



#15 AR-1232-5

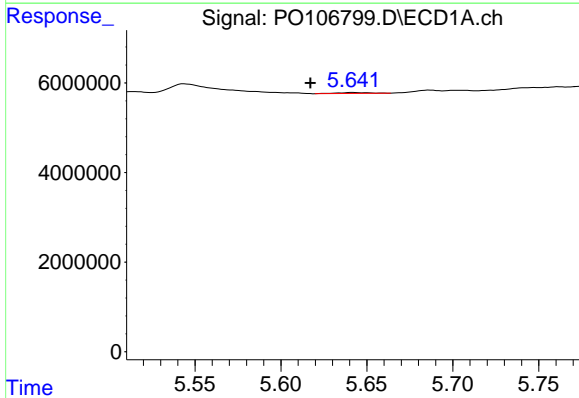
R.T.: 5.899 min
 Delta R.T.: 0.009 min
 Response: 219151
 Conc: 3.45 ng/ml

Instrument :
 ECD_O
 ClientSampleId :
 PB163603BL



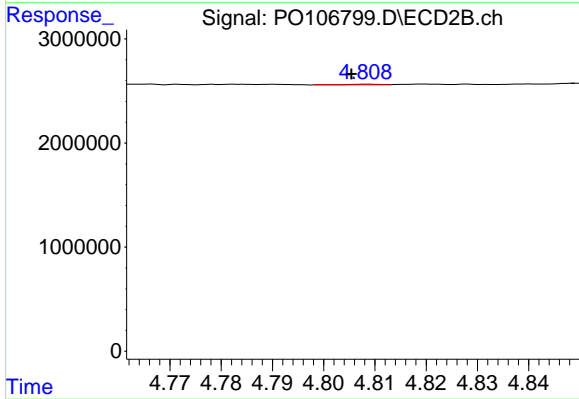
#15 AR-1232-5

R.T.: 5.269 min
 Delta R.T.: 0.011 min
 Response: 64265
 Conc: 2.19 ng/ml



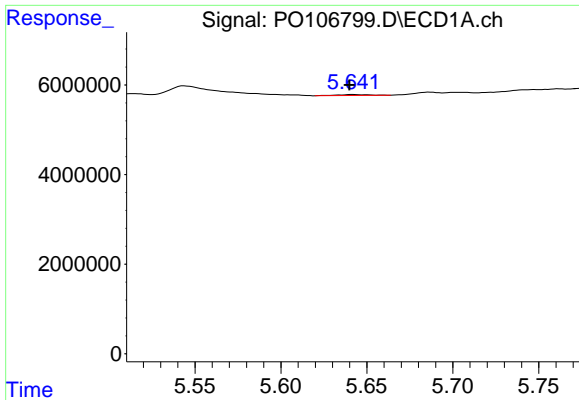
#16 AR-1242-1

R.T.: 5.642 min
 Delta R.T.: 0.025 min
 Response: 274556
 Conc: 1.37 ng/ml



#16 AR-1242-1

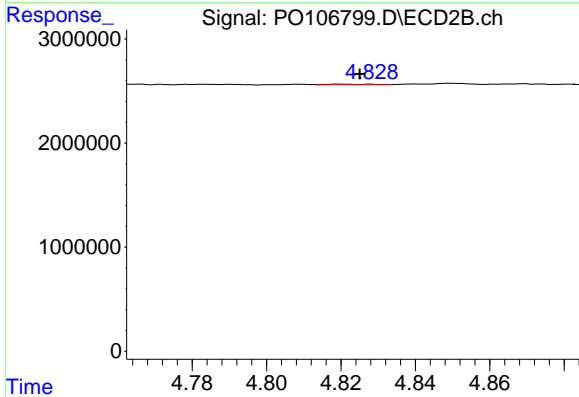
R.T.: 4.809 min
 Delta R.T.: 0.003 min
 Response: 21551
 Conc: 0.29 ng/ml



#17 AR-1242-2

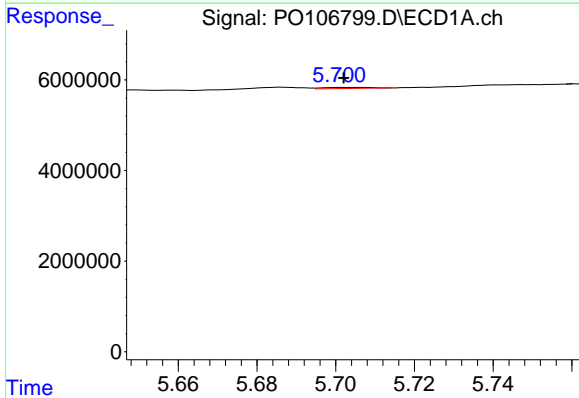
R.T.: 5.642 min
 Delta R.T.: 0.002 min
 Response: 274556
 Conc: 1.00 ng/ml

Instrument :
 ECD_O
 ClientSampleId :
 PB163603BL



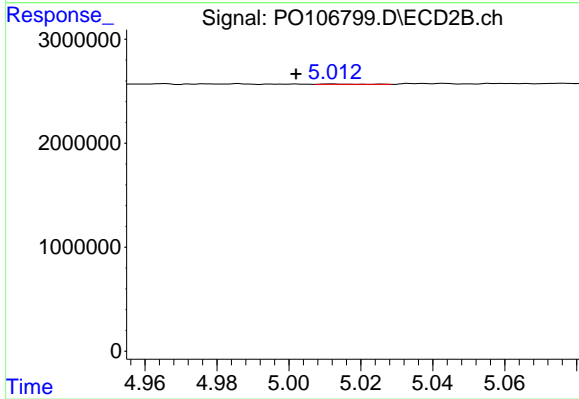
#17 AR-1242-2

R.T.: 4.820 min
 Delta R.T.: -0.005 min
 Response: 46684
 Conc: 0.48 ng/ml



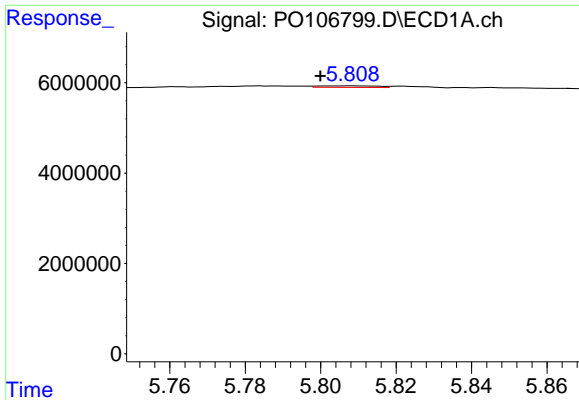
#18 AR-1242-3

R.T.: 5.702 min
 Delta R.T.: 0.000 min
 Response: 201681
 Conc: 1.18 ng/ml



#18 AR-1242-3

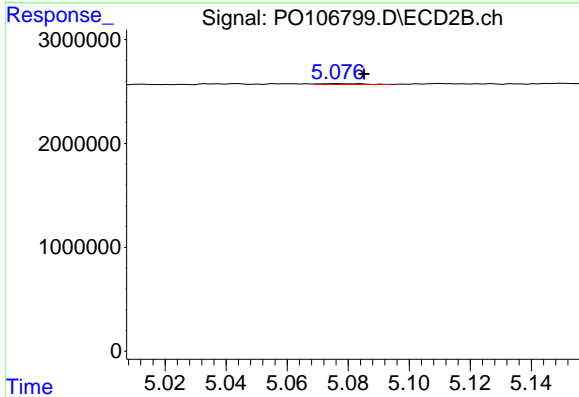
R.T.: 5.012 min
 Delta R.T.: 0.010 min
 Response: 25883
 Conc: 0.48 ng/ml



#19 AR-1242-4

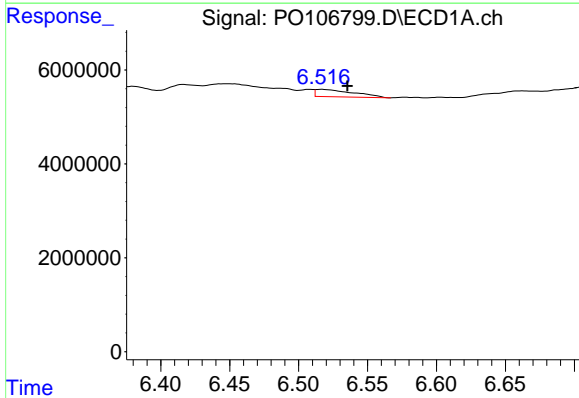
R.T.: 5.808 min
 Delta R.T.: 0.008 min
 Response: 363714
 Conc: 2.61 ng/ml

Instrument :
 ECD_O
 ClientSampleId :
 PB163603BL



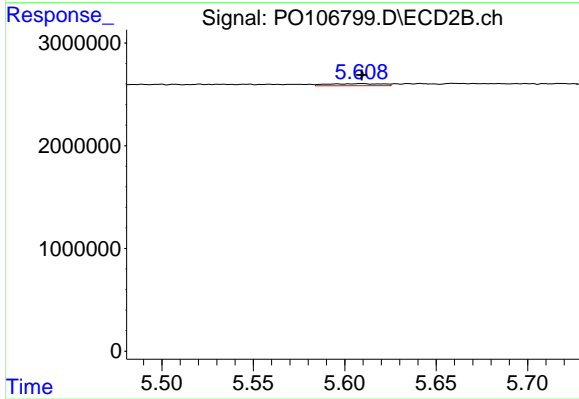
#19 AR-1242-4

R.T.: 5.076 min
 Delta R.T.: -0.009 min
 Response: 75533
 Conc: 1.42 ng/ml



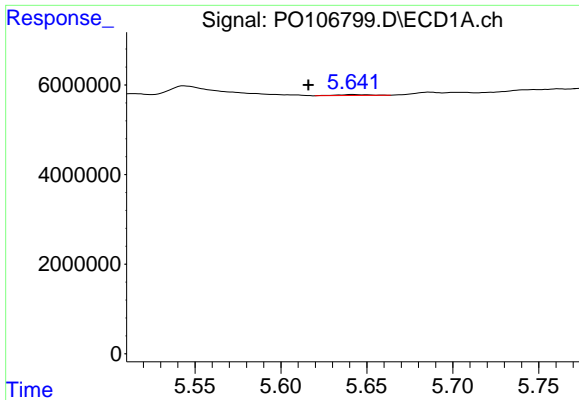
#20 AR-1242-5

R.T.: 6.517 min
 Delta R.T.: -0.019 min
 Response: 3010388
 Conc: 21.65 ng/ml



#20 AR-1242-5

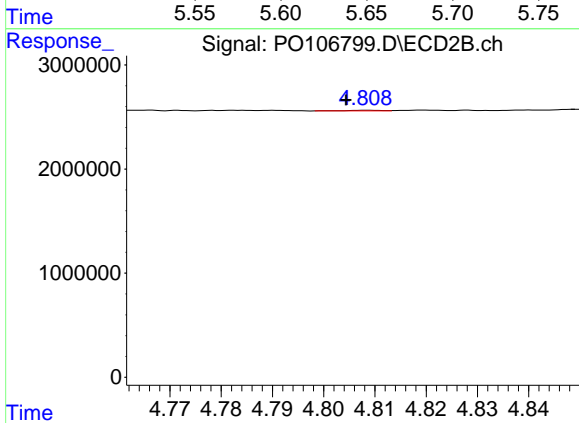
R.T.: 5.609 min
 Delta R.T.: 0.000 min
 Response: 424344
 Conc: 6.08 ng/ml



#21 AR-1248-1

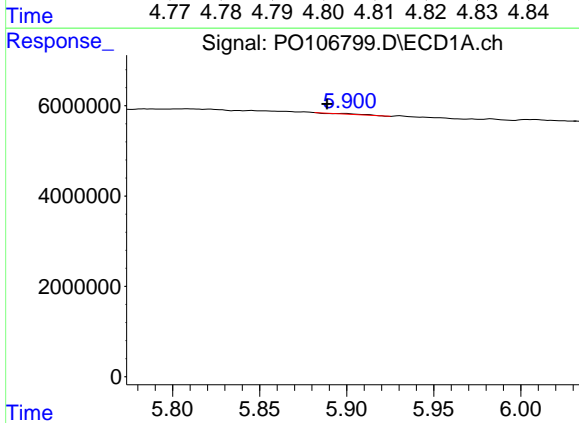
R.T.: 5.642 min
 Delta R.T.: 0.026 min
 Response: 274556
 Conc: 1.74 ng/ml

Instrument :
 ECD_O
 ClientSampleId :
 PB163603BL



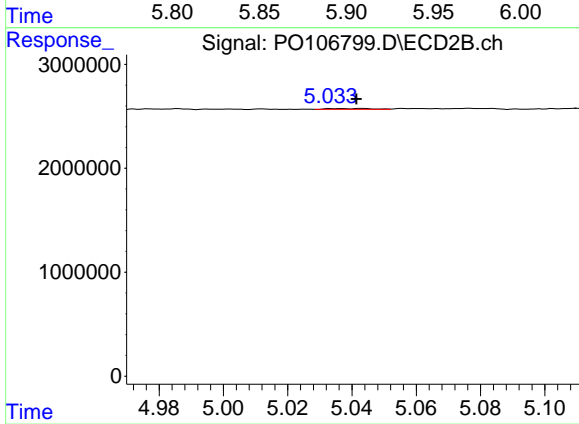
#21 AR-1248-1

R.T.: 4.809 min
 Delta R.T.: 0.004 min
 Response: 21551
 Conc: 0.37 ng/ml



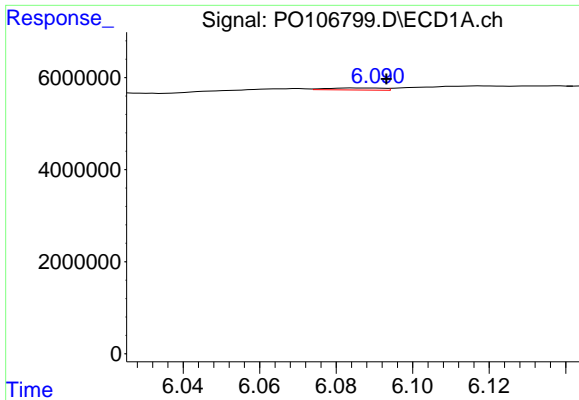
#22 AR-1248-2

R.T.: 5.899 min
 Delta R.T.: 0.010 min
 Response: 219151
 Conc: 1.01 ng/ml



#22 AR-1248-2

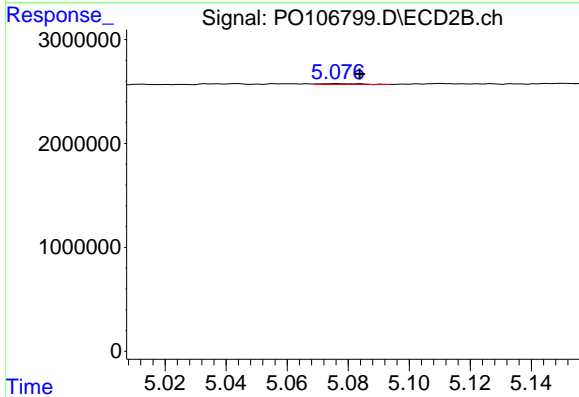
R.T.: 5.043 min
 Delta R.T.: 0.002 min
 Response: 79823
 Conc: 1.02 ng/ml



#23 AR-1248-3

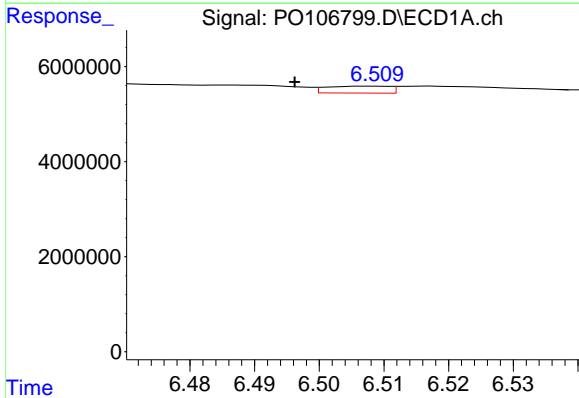
R.T.: 6.085 min
 Delta R.T.: -0.008 min
 Response: 447762
 Conc: 1.88 ng/ml

Instrument :
 ECD_O
 ClientSampleId :
 PB163603BL



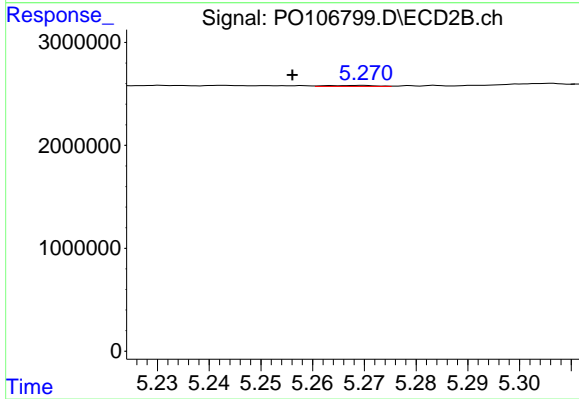
#23 AR-1248-3

R.T.: 5.076 min
 Delta R.T.: -0.008 min
 Response: 75533
 Conc: 0.92 ng/ml



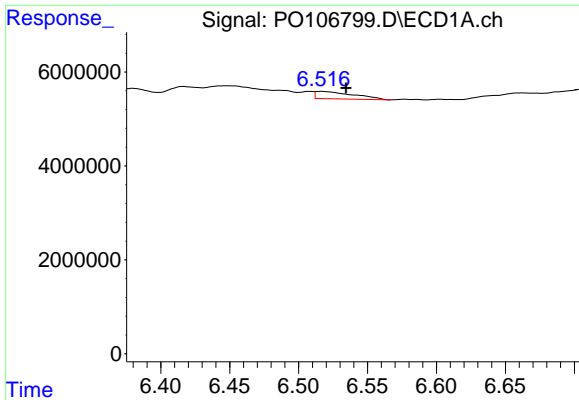
#24 AR-1248-4

R.T.: 6.508 min
 Delta R.T.: 0.012 min
 Response: 998125
 Conc: 3.80 ng/ml



#24 AR-1248-4

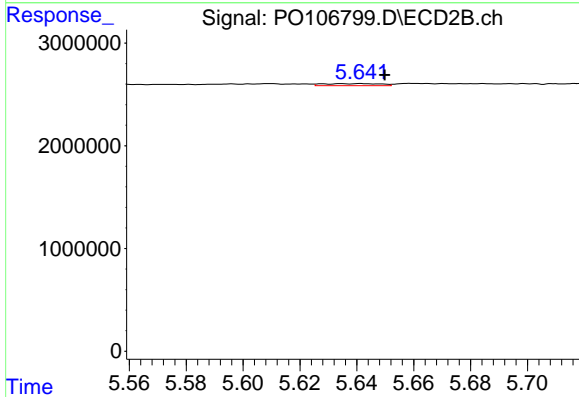
R.T.: 5.269 min
 Delta R.T.: 0.013 min
 Response: 64265
 Conc: 0.65 ng/ml



#25 AR-1248-5

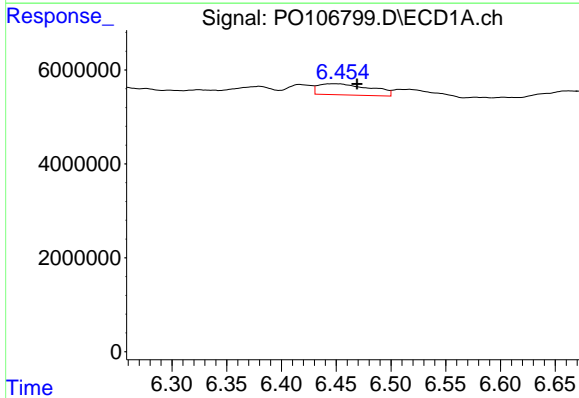
R.T.: 6.517 min
 Delta R.T.: -0.018 min
 Response: 3010388
 Conc: 12.00 ng/ml

Instrument :
 ECD_O
 ClientSampleId :
 PB163603BL



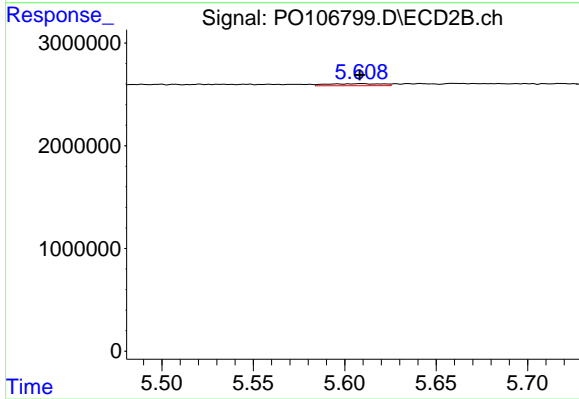
#25 AR-1248-5

R.T.: 5.641 min
 Delta R.T.: -0.008 min
 Response: 284500
 Conc: 2.94 ng/ml



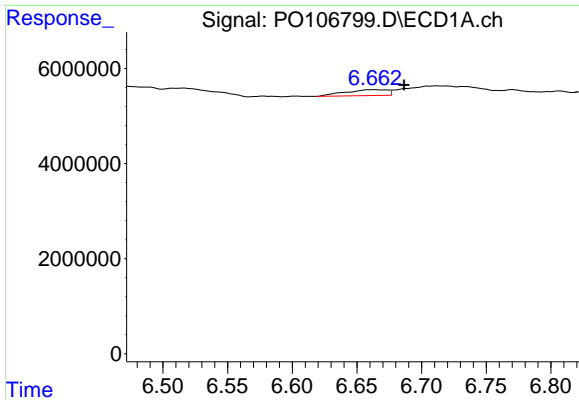
#26 AR-1254-1

R.T.: 6.449 min
 Delta R.T.: -0.020 min
 Response: 7821423
 Conc: 30.01 ng/ml



#26 AR-1254-1

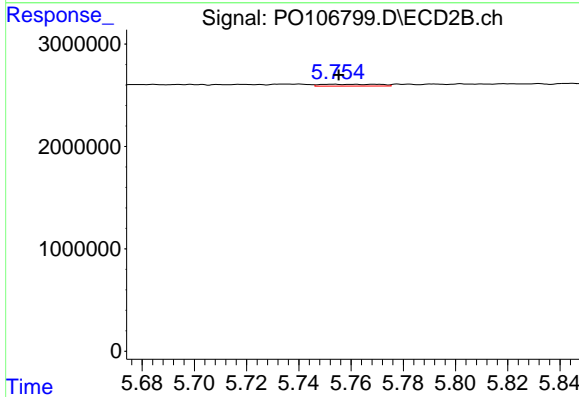
R.T.: 5.609 min
 Delta R.T.: 0.001 min
 Response: 424344
 Conc: 3.01 ng/ml



#27 AR-1254-2

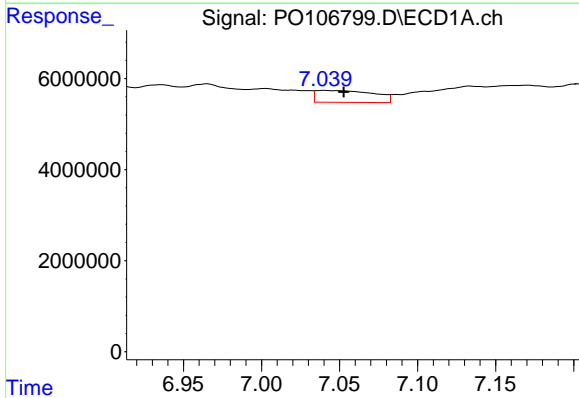
R.T.: 6.663 min
 Delta R.T.: -0.024 min
 Response: 2848022
 Conc: 7.31 ng/ml

Instrument :
 ECD_O
 ClientSampleId :
 PB163603BL



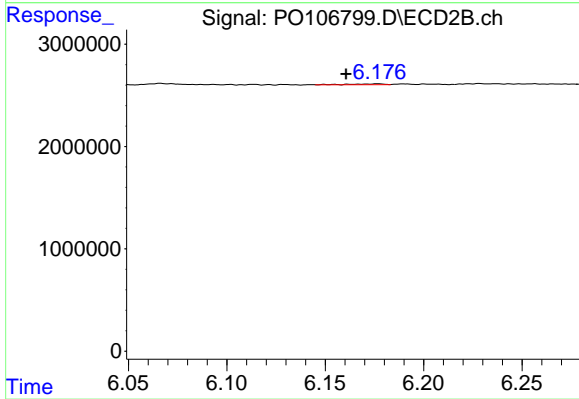
#27 AR-1254-2

R.T.: 5.753 min
 Delta R.T.: -0.002 min
 Response: 279563
 Conc: 2.19 ng/ml



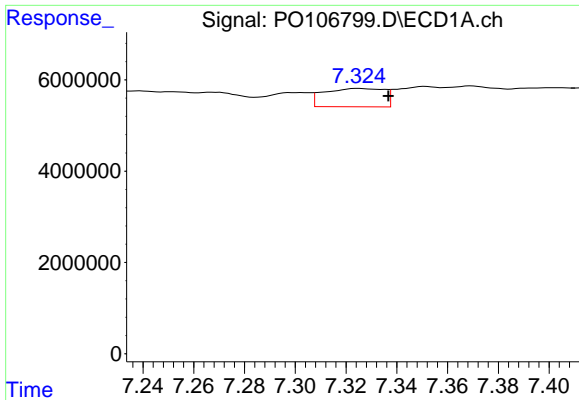
#28 AR-1254-3

R.T.: 7.040 min
 Delta R.T.: -0.012 min
 Response: 6718948
 Conc: 17.23 ng/ml



#28 AR-1254-3

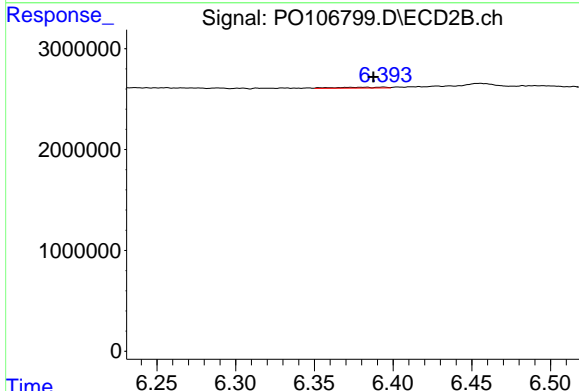
R.T.: 6.177 min
 Delta R.T.: 0.016 min
 Response: 116364
 Conc: 0.58 ng/ml



#29 AR-1254-4

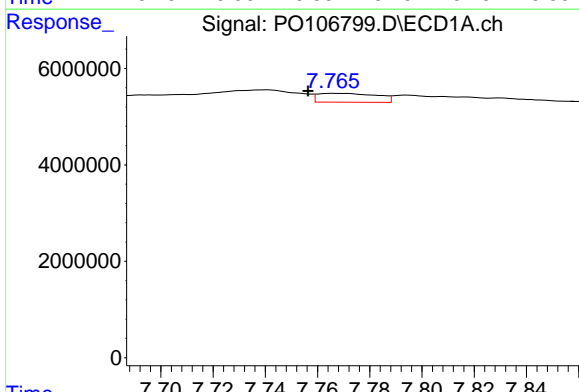
R.T.: 7.325 min
 Delta R.T.: -0.012 min
 Response: 6590483
 Conc: 22.68 ng/ml

Instrument :
 ECD_O
 ClientSampleId :
 PB163603BL



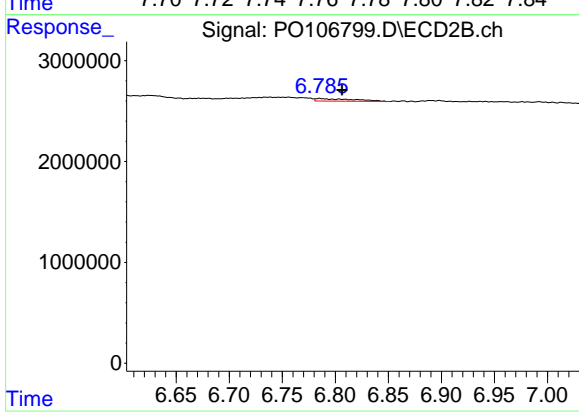
#29 AR-1254-4

R.T.: 6.394 min
 Delta R.T.: 0.006 min
 Response: 190155
 Conc: 1.53 ng/ml



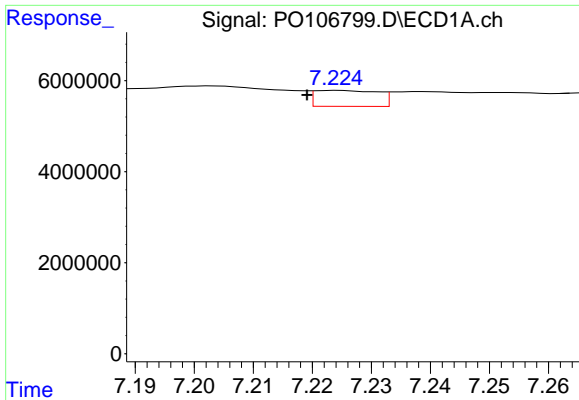
#30 AR-1254-5

R.T.: 7.766 min
 Delta R.T.: 0.009 min
 Response: 2889266
 Conc: 9.49 ng/ml



#30 AR-1254-5

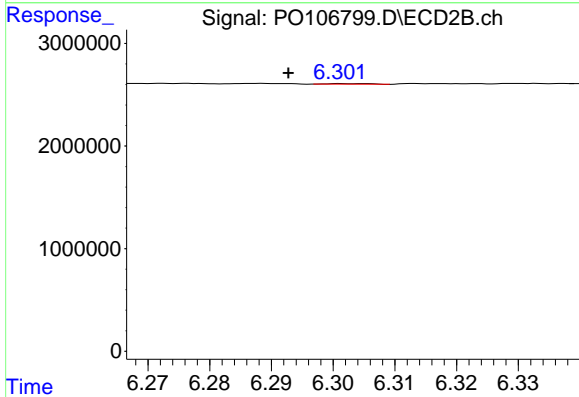
R.T.: 6.785 min
 Delta R.T.: -0.021 min
 Response: 622412
 Conc: 3.48 ng/ml



#31 AR-1260-1

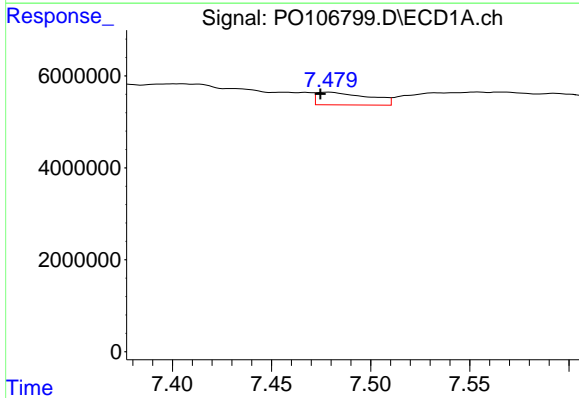
R.T.: 7.224 min
 Delta R.T.: 0.005 min
 Response: 2598472
 Conc: 9.21 ng/ml

Instrument :
 ECD_O
 ClientSampleId :
 PB163603BL



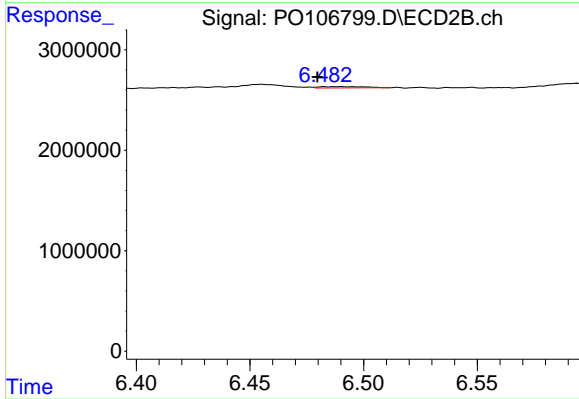
#31 AR-1260-1

R.T.: 6.303 min
 Delta R.T.: 0.010 min
 Response: 28916
 Conc: 0.22 ng/ml



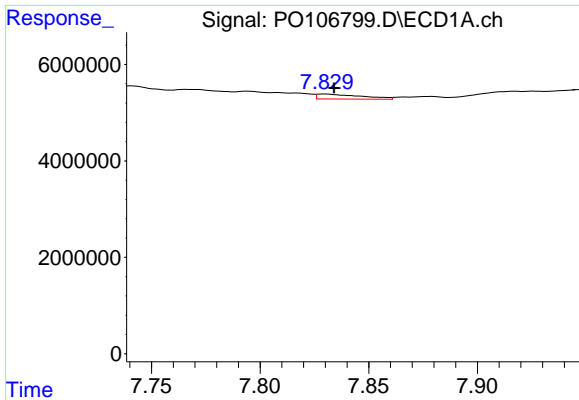
#32 AR-1260-2

R.T.: 7.479 min
 Delta R.T.: 0.004 min
 Response: 4972235
 Conc: 14.90 ng/ml



#32 AR-1260-2

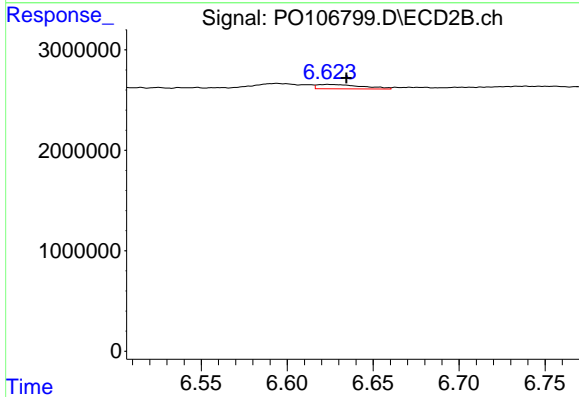
R.T.: 6.490 min
 Delta R.T.: 0.010 min
 Response: 184222
 Conc: 1.16 ng/ml



#33 AR-1260-3

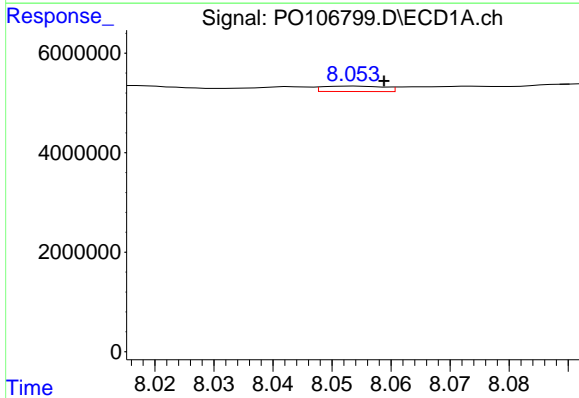
R.T.: 7.830 min
 Delta R.T.: -0.004 min
 Response: 1438298
 Conc: 6.37 ng/ml

Instrument :
 ECD_O
 ClientSampleId :
 PB163603BL



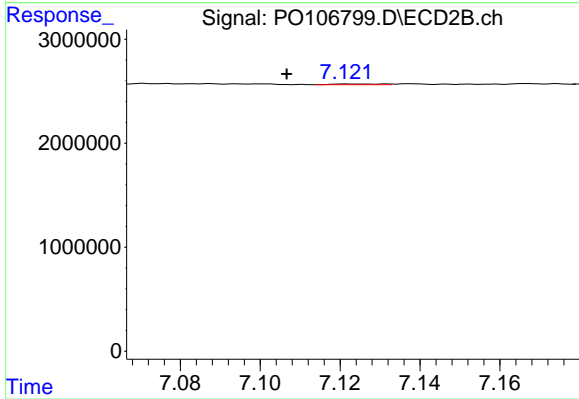
#33 AR-1260-3

R.T.: 6.624 min
 Delta R.T.: -0.010 min
 Response: 776361
 Conc: 5.03 ng/ml



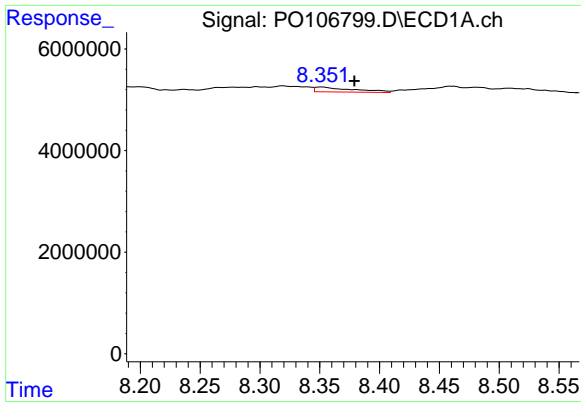
#34 AR-1260-4

R.T.: 8.054 min
 Delta R.T.: -0.005 min
 Response: 775667
 Conc: 2.80 ng/ml



#34 AR-1260-4

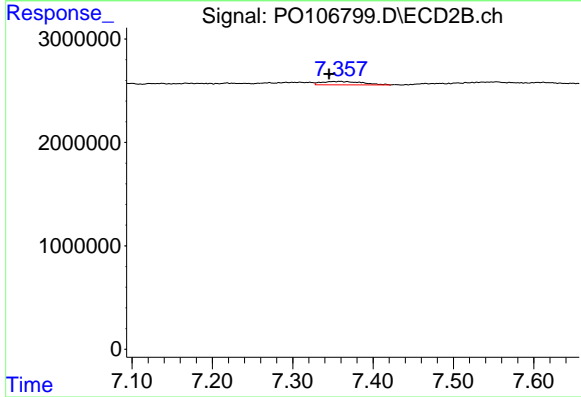
R.T.: 7.122 min
 Delta R.T.: 0.015 min
 Response: 63635
 Conc: 0.60 ng/ml



#35 AR-1260-5

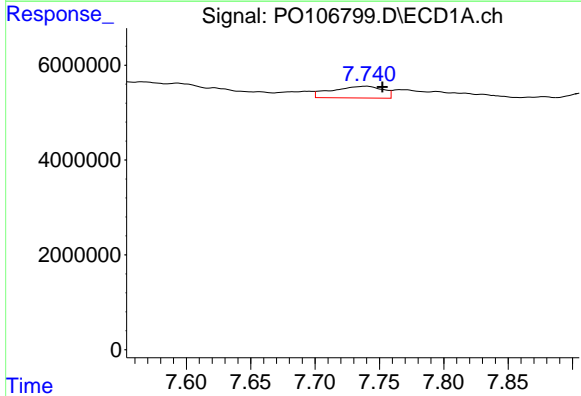
R.T.: 8.352 min
 Delta R.T.: -0.027 min
 Response: 2153604
 Conc: 4.36 ng/ml

Instrument :
 ECD_O
 ClientSampleId :
 PB163603BL



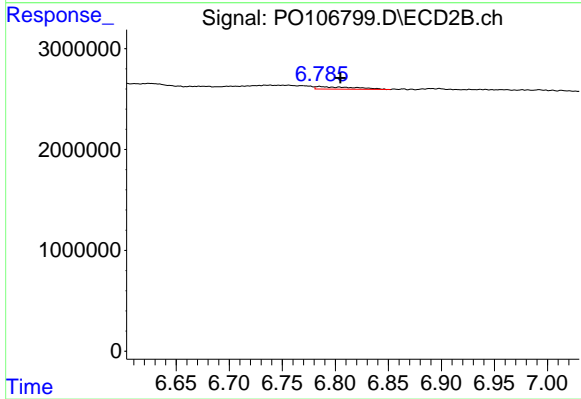
#35 AR-1260-5

R.T.: 7.359 min
 Delta R.T.: 0.014 min
 Response: 1170275
 Conc: 4.55 ng/ml



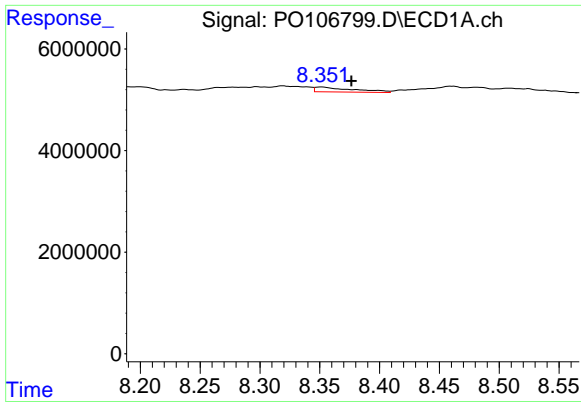
#36 AR-1262-1

R.T.: 7.740 min
 Delta R.T.: -0.012 min
 Response: 6735133
 Conc: 27.44 ng/ml



#36 AR-1262-1

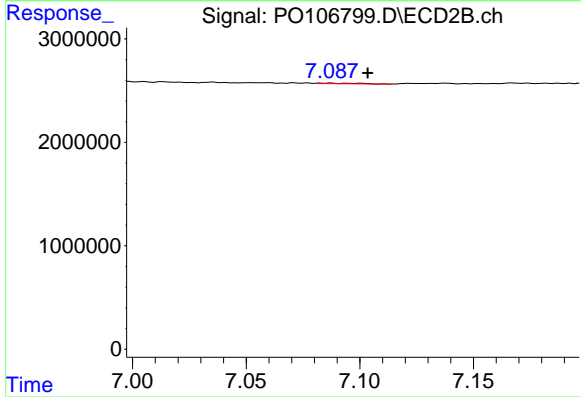
R.T.: 6.785 min
 Delta R.T.: -0.020 min
 Response: 622412
 Conc: 6.33 ng/ml



#37 AR-1262-2

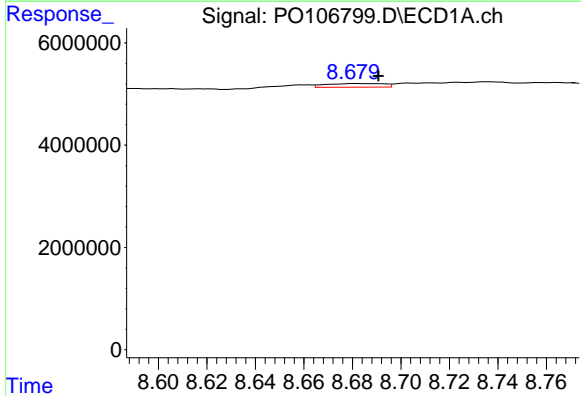
R.T.: 8.352 min
 Delta R.T.: -0.025 min
 Response: 2153604
 Conc: 3.41 ng/ml

Instrument :
 ECD_O
 ClientSampleId :
 PB163603BL



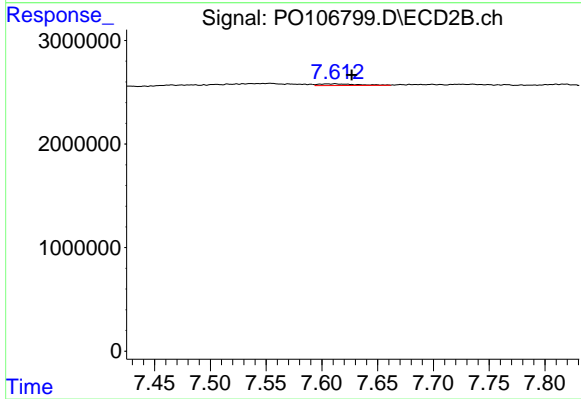
#37 AR-1262-2

R.T.: 7.087 min
 Delta R.T.: -0.017 min
 Response: 71787
 Conc: 0.46 ng/ml



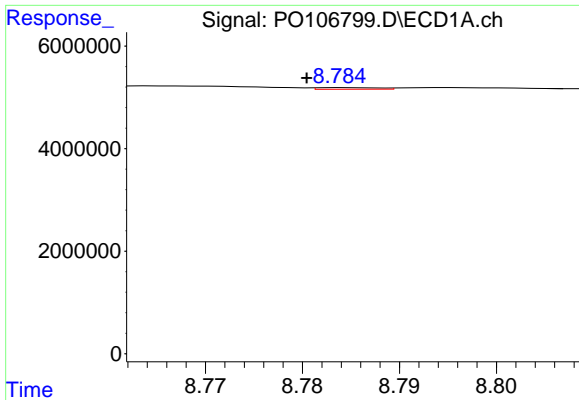
#38 AR-1262-3

R.T.: 8.681 min
 Delta R.T.: -0.010 min
 Response: 1190743
 Conc: 2.71 ng/ml



#38 AR-1262-3

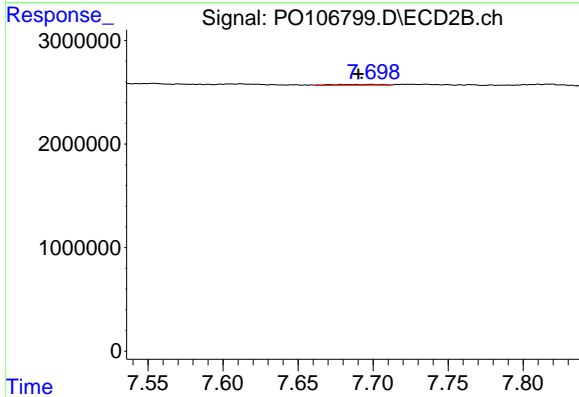
R.T.: 7.611 min
 Delta R.T.: -0.015 min
 Response: 371282
 Conc: 3.05 ng/ml



#39 AR-1262-4

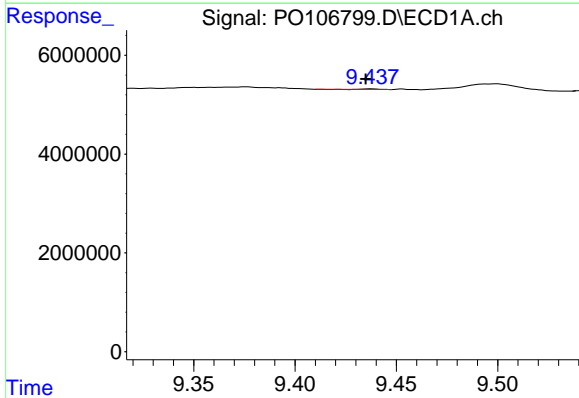
R.T.: 8.784 min
 Delta R.T.: 0.004 min
 Response: 143206
 Conc: 0.43 ng/ml

Instrument :
 ECD_O
 ClientSampleId :
 PB163603BL



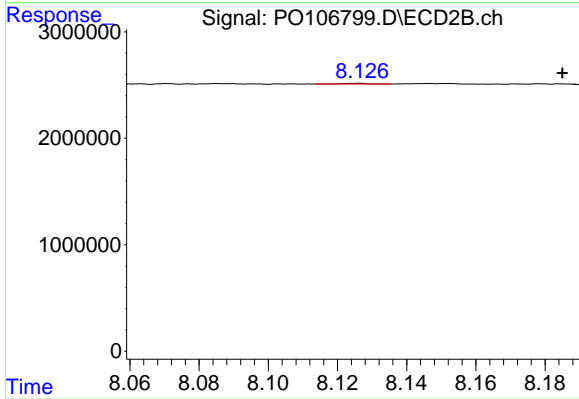
#39 AR-1262-4

R.T.: 7.699 min
 Delta R.T.: 0.008 min
 Response: 130007
 Conc: 0.55 ng/ml



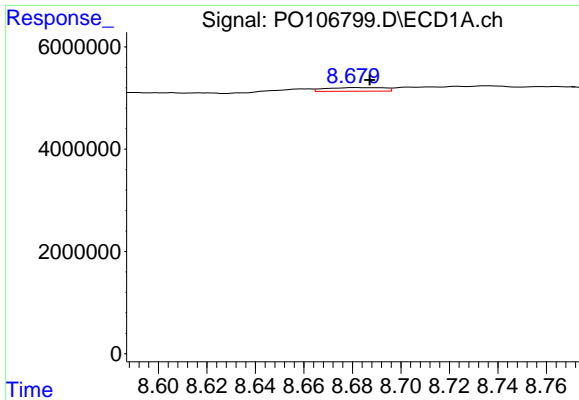
#40 AR-1262-5

R.T.: 9.438 min
 Delta R.T.: 0.003 min
 Response: 61640
 Conc: 0.26 ng/ml



#40 AR-1262-5

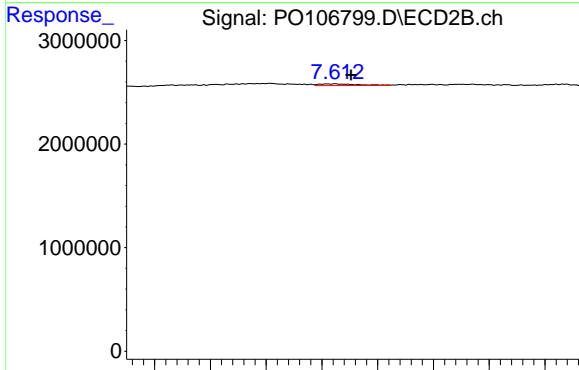
R.T.: 8.126 min
 Delta R.T.: -0.059 min
 Response: 36167
 Conc: 0.35 ng/ml



#41 AR-1268-1

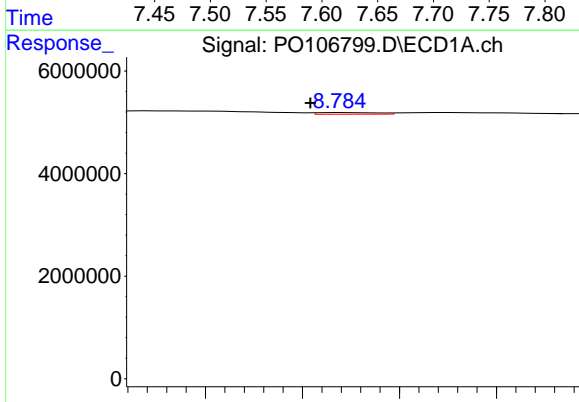
R.T.: 8.681 min
 Delta R.T.: -0.006 min
 Response: 1190743
 Conc: 1.60 ng/ml

Instrument :
 ECD_O
 ClientSampleId :
 PB163603BL



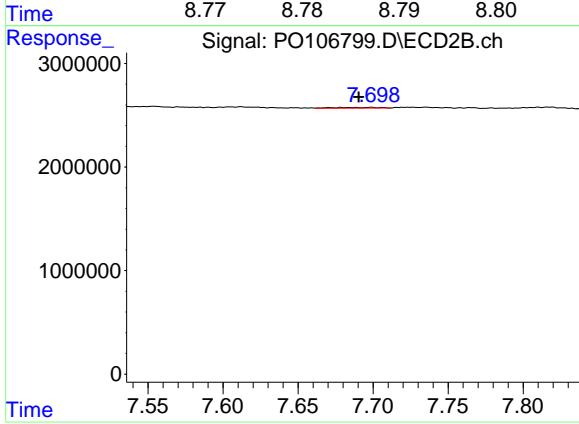
#41 AR-1268-1

R.T.: 7.611 min
 Delta R.T.: -0.015 min
 Response: 371282
 Conc: 1.03 ng/ml



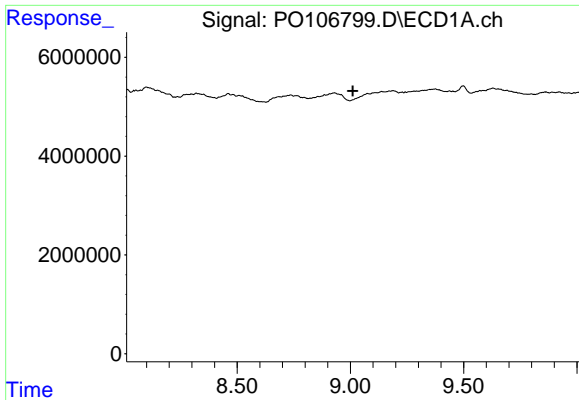
#42 AR-1268-2

R.T.: 8.784 min
 Delta R.T.: 0.004 min
 Response: 143206
 Conc: 0.21 ng/ml



#42 AR-1268-2

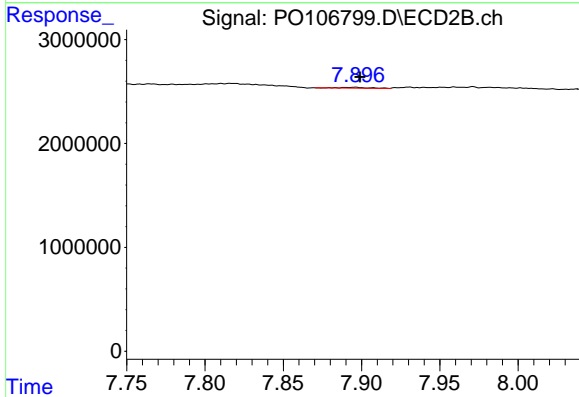
R.T.: 7.699 min
 Delta R.T.: 0.008 min
 Response: 130007
 Conc: 0.40 ng/ml



#43 AR-1268-3

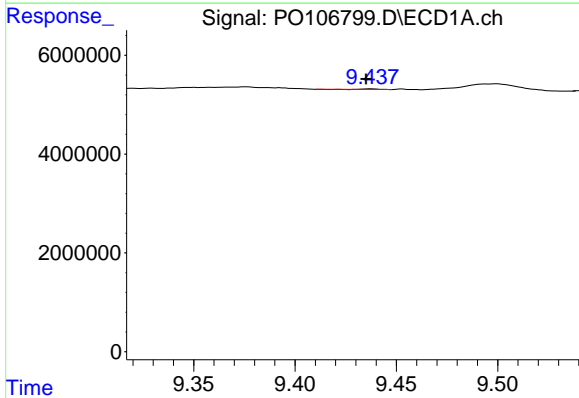
R.T.: 9.075 min
 Delta R.T.: 0.064 min
 Response: -272688
 Conc: N.D.

Instrument :
 ECD_O
 ClientSampleId :
 PB163603BL



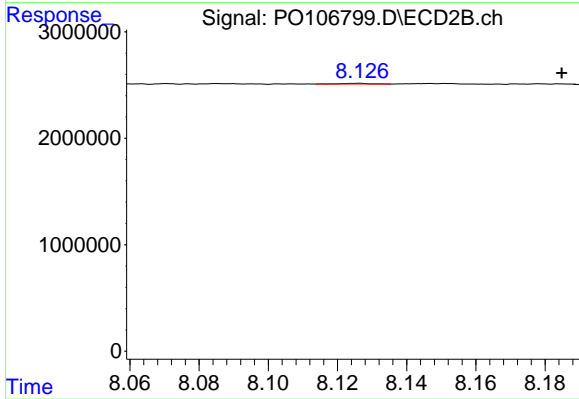
#43 AR-1268-3

R.T.: 7.895 min
 Delta R.T.: -0.004 min
 Response: 99960
 Conc: 0.37 ng/ml



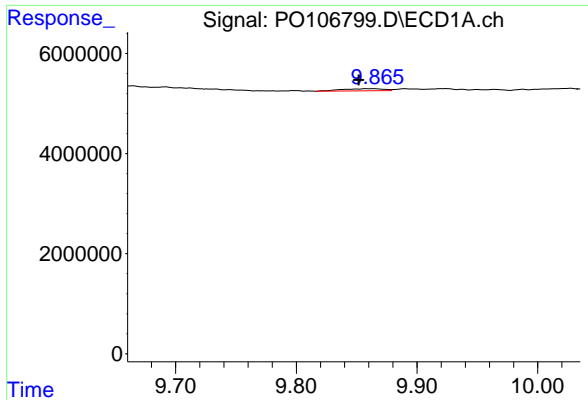
#44 AR-1268-4

R.T.: 9.438 min
 Delta R.T.: 0.002 min
 Response: 61640
 Conc: 0.25 ng/ml



#44 AR-1268-4

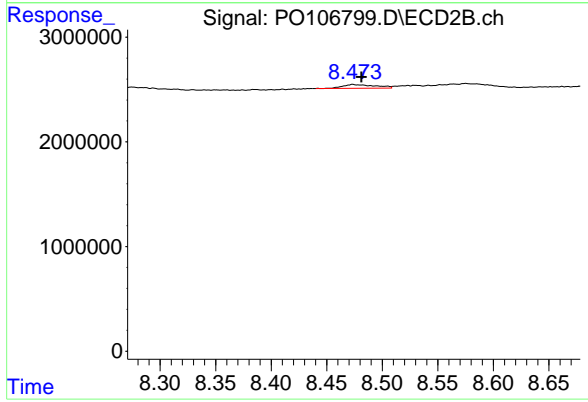
R.T.: 8.126 min
 Delta R.T.: -0.059 min
 Response: 36167
 Conc: 0.32 ng/ml



#45 AR-1268-5

R.T.: 9.865 min
 Delta R.T.: 0.013 min
 Response: 1035834
 Conc: 0.56 ng/ml

Instrument :
 ECD_O
 ClientSampleId :
 PB163603BL



#45 AR-1268-5

R.T.: 8.474 min
 Delta R.T.: -0.007 min
 Response: 739821
 Conc: 0.88 ng/ml