

Data Path : Z:\pestpcbsrv\HPCHEM1\ECD\_0\Data\P0092324\  
 Data File : PO106820.D  
 Signal(s) : Signal #1: ECD1A.ch Signal #2: ECD2B.ch  
 Acq On : 24 Sep 2024 04:51  
 Operator : YP/AJ  
 Sample : AR1248CCC500  
 Misc :  
 ALS Vial : 5 Sample Multiplier: 1

Instrument :  
 ECD\_0  
 ClientSampleId :  
 AR1248CCC500

Integration File signal 1: autoint1.e  
 Integration File signal 2: autoint2.e  
 Quant Time: Sep 24 06:21:18 2024  
 Quant Method : Z:\pestpcbsrv\HPCHEM1\ECD\_0\methods\P0090924.M  
 Quant Title : GC EXTRACTABLES  
 QLast Update : Tue Sep 10 09:57:51 2024  
 Response via : Initial Calibration  
 Integrator: ChemStation

Volume Inj. : 2 µl  
 Signal #1 Phase : ZB-MR1 Signal #2 Phase: ZB-MR2  
 Signal #1 Info : 30Mx0.32mmx 0.50µ Signal #2 Info : 30M x 0.32mm x 0.25µm

Compound	RT#1	RT#2	Resp#1	Resp#2	ng/ml	ng/ml
System Monitoring Compounds						
1) SA Tetrachlo...	4.449	3.710	337.5E6	157.7E6	44.993	59.054 #
2) SA Decachlor...	10.191	8.732	225.1E6	111.8E6	45.543	55.870
Target Compounds						
3) L1 AR-1016-1	5.613	4.797	68183915	30771519	266.950	323.051
4) L1 AR-1016-2	5.636	4.817	78064167	30157440	219.312	235.953
5) L1 AR-1016-3	5.698	4.994	37485981	20141952	171.995	291.986 #
6) L1 AR-1016-4	5.796	5.034	42047465	40344102	237.072	759.669 #
7) L1 AR-1016-5	6.091	5.249	102.9E6	54293263	596.060	760.030 #
8) L2 AR-1221-1	0.000	3.925	0	548319	N.D.	18.131 #
9) L2 AR-1221-2	4.753	4.011	6876666	2536921	97.055	112.069
10) L2 AR-1221-3	4.817	4.085	7163119	2531441	35.375	35.640
11) L3 AR-1232-1	4.817	4.085	7163119	2531441	40.985	41.925
12) L3 AR-1232-2	5.347	4.817	35202924	30157440	377.386	518.694 #
13) L3 AR-1232-3	5.636	4.994	78064167	20141952	476.040	646.565 #
14) L3 AR-1232-4	5.796	5.077	42047465	42802877	510.578	1566.217 #
15) L3 AR-1232-5	5.887	5.249	91336970	54293263	1438.609	1852.587 #
16) L4 AR-1242-1	5.613	4.797	68183915	30771519	340.404	416.719
17) L4 AR-1242-2	5.636	4.817	78064167	30157440	283.344	308.109
18) L4 AR-1242-3	5.698	4.994	37485981	20141952	218.531	375.436 #
19) L4 AR-1242-4	5.796	5.077	42047465	42802877	302.054	807.010 #
20) L4 AR-1242-5	6.532	5.600	116.1E6	73262316	834.879	1048.966 #
21) L5 AR-1248-1	5.613	4.797	68183915	30771519	431.750	531.892
22) L5 AR-1248-2	5.887	5.034	91336970	40344102	421.047	516.149
23) L5 AR-1248-3	6.091	5.077	102.9E6	42802877	430.811	520.793
24) L5 AR-1248-4	6.493	5.249	117.7E6	54293263	448.126	552.973
25) L5 AR-1248-5	6.532	5.642	116.1E6	52012980	463.020	537.025
26) L6 AR-1254-1	6.466	5.600	90920516	73262316	348.878	520.116 #
27) L6 AR-1254-2	6.689	5.748	111.0E6	21882326	284.852	171.750 #
28) L6 AR-1254-3	7.051	6.152	58563965	31572516	150.203	156.821
29) L6 AR-1254-4	7.336	6.381	38551123	21191178	132.665	170.290 #
30) L6 AR-1254-5	7.754	6.799	8866332	6383657	29.133	35.641
31) L7 AR-1260-1	7.217	6.298	6124744	8486471	21.709	65.622 #
32) L7 AR-1260-2	7.469	6.468	9687649	3353368	29.038	21.129 #
33) L7 AR-1260-3	7.816	6.624	3164425	4684558	14.020	30.371 #
34) L7 AR-1260-4	8.041	7.098	4919238	532526	17.780	5.009 #
35) L7 AR-1260-5	8.375	7.335	1386858	1306572	2.810	5.080 #
36) L8 AR-1262-1	7.754	6.799	8866332	6383657	36.120	64.939 #
37) L8 AR-1262-2	8.375	7.098	1386858	532526	2.198	3.392 #
38) L8 AR-1262-3	0.000	7.627	0	1624695	N.D.	13.349 #
39) L8 AR-1262-4	0.000	7.681	0	1317077	N.D.	5.576 #
40) L8 AR-1262-5	9.495f	8.177	2344609	187843	10.029	1.797 #
41) L9 AR-1268-1	0.000	7.627	0	1624695	N.D.	4.495 #

Data Path : Z:\pestpcbsrv\HPCHEM1\ECD\_0\Data\P0092324\  
 Data File : P0106820.D  
 Signal(s) : Signal #1: ECD1A.ch Signal #2: ECD2B.ch  
 Acq On : 24 Sep 2024 04:51  
 Operator : YP/AJ  
 Sample : AR1248CCC500  
 Misc :  
 ALS Vial : 5 Sample Multiplier: 1

Instrument :  
 ECD\_0  
 ClientSampleId :  
 AR1248CCC500

Integration File signal 1: autoint1.e  
 Integration File signal 2: autoint2.e  
 Quant Time: Sep 24 06:21:18 2024  
 Quant Method : Z:\pestpcbsrv\HPCHEM1\ECD\_0\methods\P0090924.M  
 Quant Title : GC EXTRACTABLES  
 QLast Update : Tue Sep 10 09:57:51 2024  
 Response via : Initial Calibration  
 Integrator: ChemStation

Volume Inj. : 2 µl  
 Signal #1 Phase : ZB-MR1 Signal #2 Phase: ZB-MR2  
 Signal #1 Info : 30Mx0.32mmx 0.50µ Signal #2 Info : 30M x 0.32mm x 0.25µm

	Compound	RT#1	RT#2	Resp#1	Resp#2	ng/ml	ng/ml
42)	L9 AR-1268-2	0.000	7.681	0	1317077	N.D.	4.030 #
43)	L9 AR-1268-3	0.000	7.890	0	225496	N.D.	0.836 #
44)	L9 AR-1268-4	9.495f	8.177	2344609	187843	9.478	1.651 #
45)	L9 AR-1268-5	9.847	8.473	1844155	544643	1.001	0.647 #

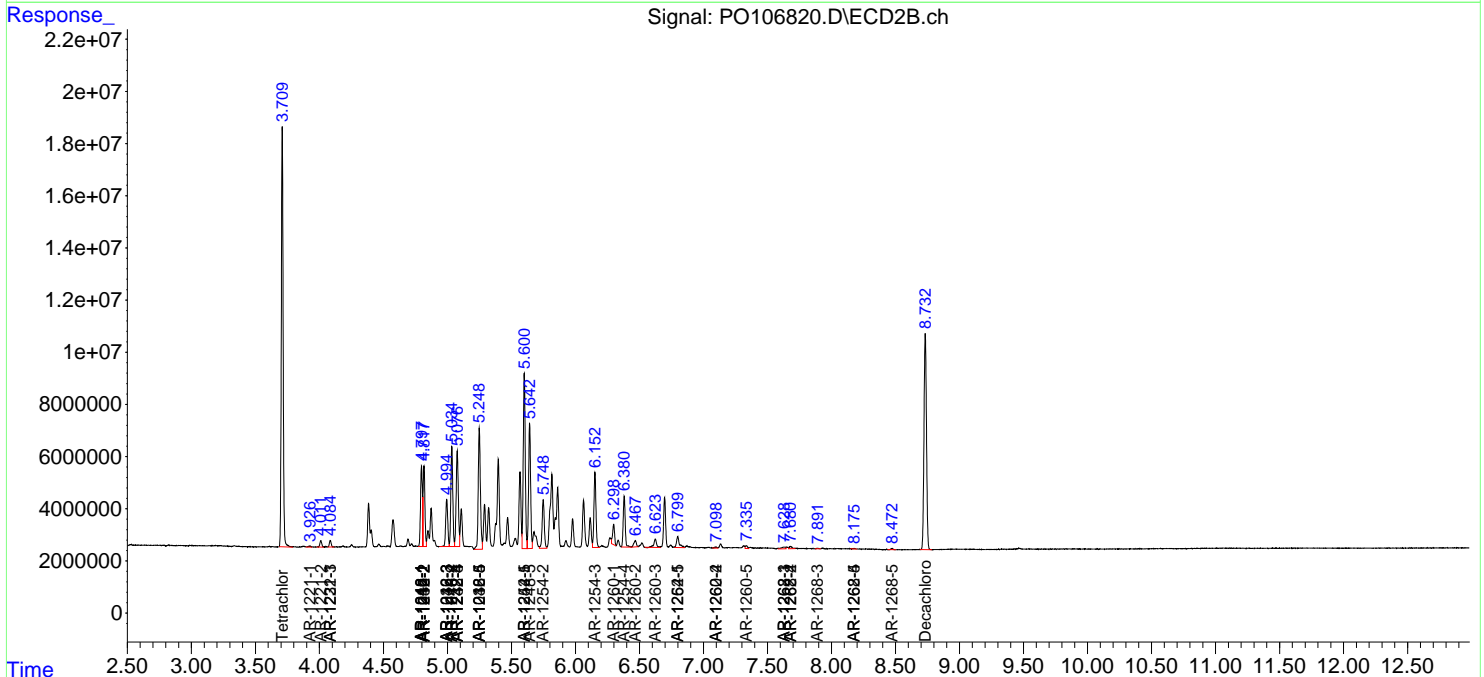
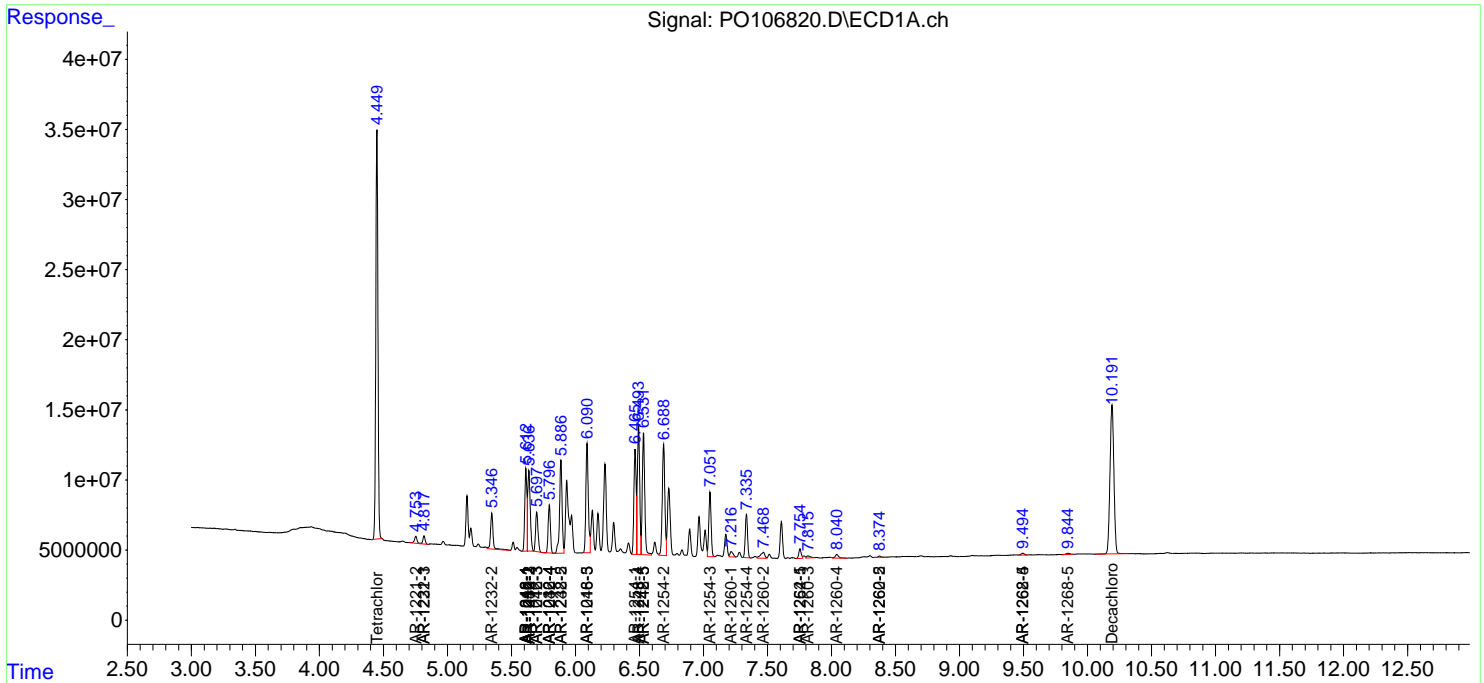
(f)=RT Delta > 1/2 Window (#)=Amounts differ by > 25% (m)=manual int.

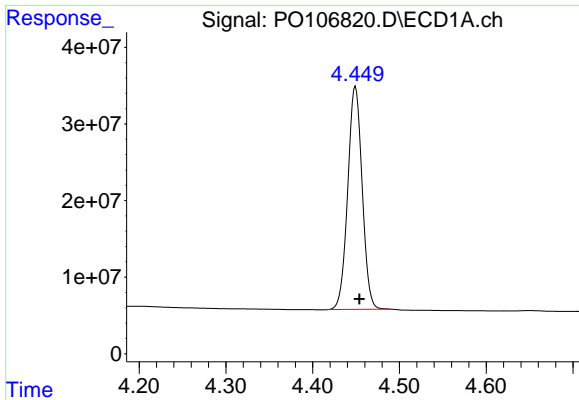
Data Path : Z:\pestpcbsrv\HPCHEM1\ECD\_O\Data\PO092324\  
 Data File : PO106820.D  
 Signal(s) : Signal #1: ECD1A.ch Signal #2: ECD2B.ch  
 Acq On : 24 Sep 2024 04:51  
 Operator : YP/AJ  
 Sample : AR1248CCC500  
 Misc :  
 ALS Vial : 5 Sample Multiplier: 1

Instrument :  
 ECD\_O  
 ClientSampleId :  
 AR1248CCC500

Integration File signal 1: autoint1.e  
 Integration File signal 2: autoint2.e  
 Quant Time: Sep 24 06:21:18 2024  
 Quant Method : Z:\pestpcbsrv\HPCHEM1\ECD\_O\methods\PO090924.M  
 Quant Title : GC EXTRACTABLES  
 QLast Update : Tue Sep 10 09:57:51 2024  
 Response via : Initial Calibration  
 Integrator: ChemStation

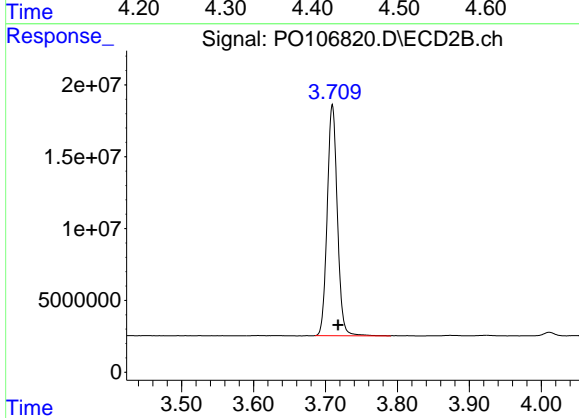
Volume Inj. : 2 µl  
 Signal #1 Phase : ZB-MR1 Signal #2 Phase: ZB-MR2  
 Signal #1 Info : 30Mx0.32mmx 0.50µ Signal #2 Info : 30M x 0.32mm x 0.25µm



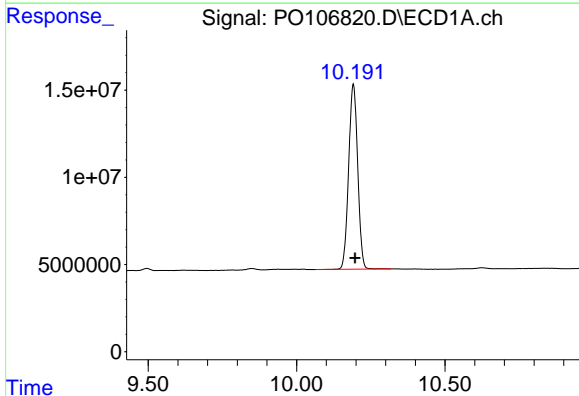


#1 Tetrachloro-m-xylene  
 R.T.: 4.449 min  
 Delta R.T.: -0.005 min  
 Response: 337509573  
 Conc: 44.99 ng/ml

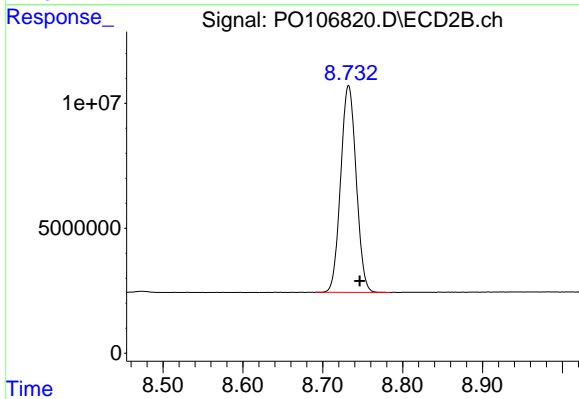
Instrument :  
 ECD\_O  
 ClientSampleId :  
 AR1248CCC500



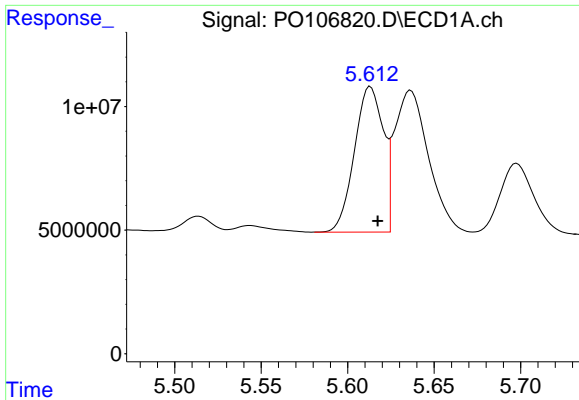
#1 Tetrachloro-m-xylene  
 R.T.: 3.710 min  
 Delta R.T.: -0.008 min  
 Response: 157746142  
 Conc: 59.05 ng/ml



#2 Decachlorobiphenyl  
 R.T.: 10.191 min  
 Delta R.T.: -0.006 min  
 Response: 225108891  
 Conc: 45.54 ng/ml



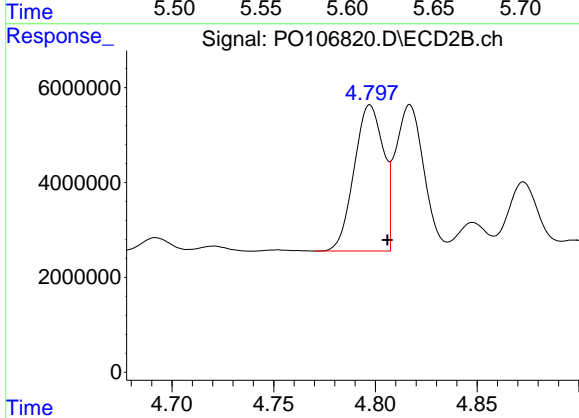
#2 Decachlorobiphenyl  
 R.T.: 8.732 min  
 Delta R.T.: -0.014 min  
 Response: 111752750  
 Conc: 55.87 ng/ml



#3 AR-1016-1

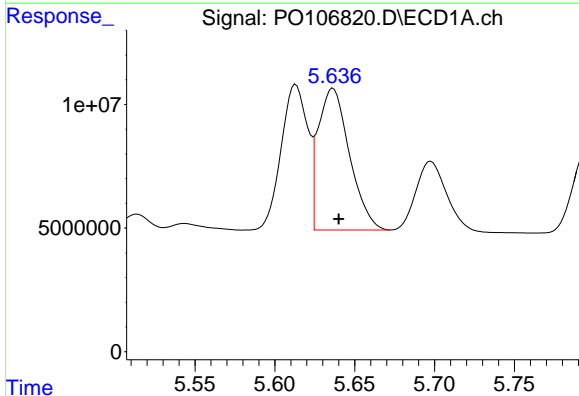
R.T.: 5.613 min  
 Delta R.T.: -0.004 min  
 Response: 68183915  
 Conc: 266.95 ng/ml

Instrument :  
 ECD\_O  
 ClientSampleId :  
 AR1248CCC500



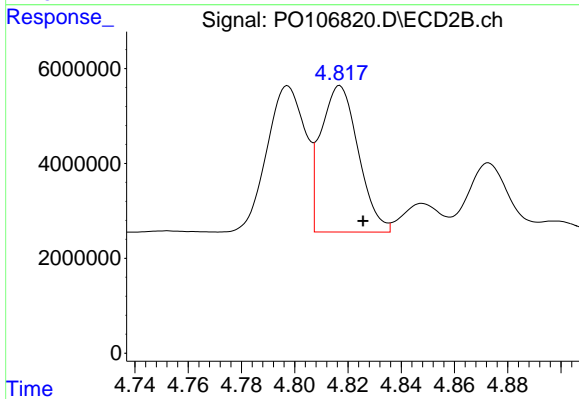
#3 AR-1016-1

R.T.: 4.797 min  
 Delta R.T.: -0.008 min  
 Response: 30771519  
 Conc: 323.05 ng/ml



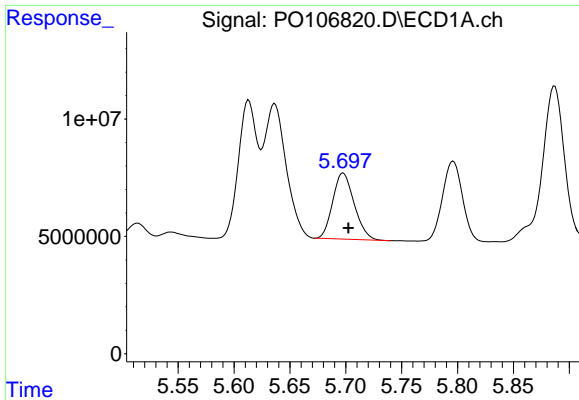
#4 AR-1016-2

R.T.: 5.636 min  
 Delta R.T.: -0.004 min  
 Response: 78064167  
 Conc: 219.31 ng/ml



#4 AR-1016-2

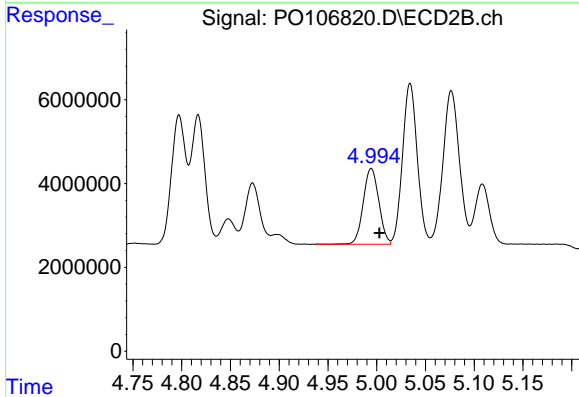
R.T.: 4.817 min  
 Delta R.T.: -0.009 min  
 Response: 30157440  
 Conc: 235.95 ng/ml



#5 AR-1016-3

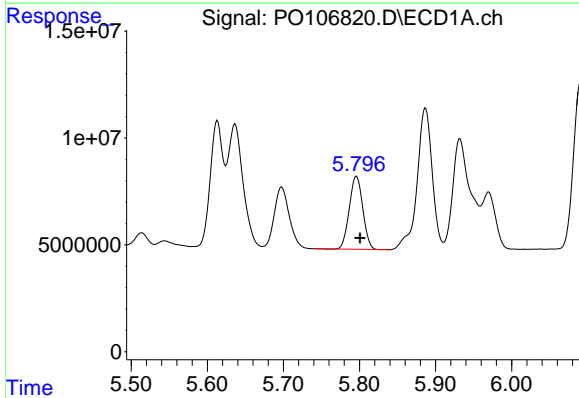
R.T.: 5.698 min  
 Delta R.T.: -0.004 min  
 Response: 37485981  
 Conc: 172.00 ng/ml

Instrument :  
 ECD\_O  
 ClientSampleId :  
 AR1248CCC500



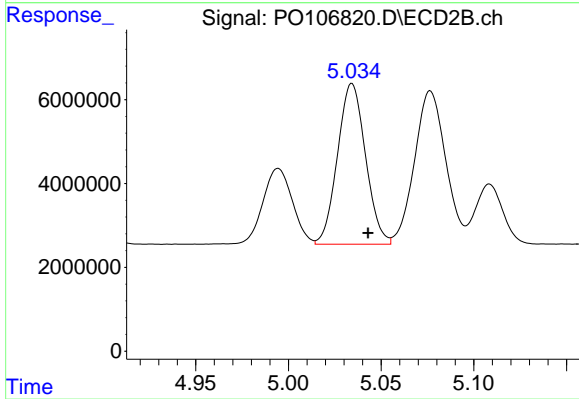
#5 AR-1016-3

R.T.: 4.994 min  
 Delta R.T.: -0.008 min  
 Response: 20141952  
 Conc: 291.99 ng/ml



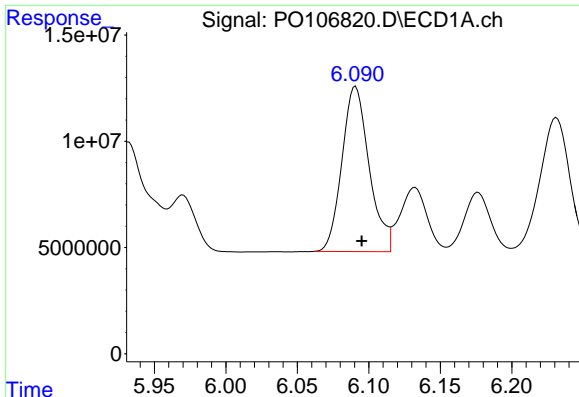
#6 AR-1016-4

R.T.: 5.796 min  
 Delta R.T.: -0.005 min  
 Response: 42047465  
 Conc: 237.07 ng/ml



#6 AR-1016-4

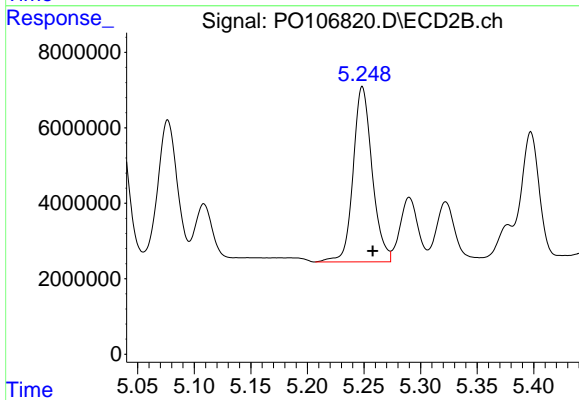
R.T.: 5.034 min  
 Delta R.T.: -0.009 min  
 Response: 40344102  
 Conc: 759.67 ng/ml



#7 AR-1016-5

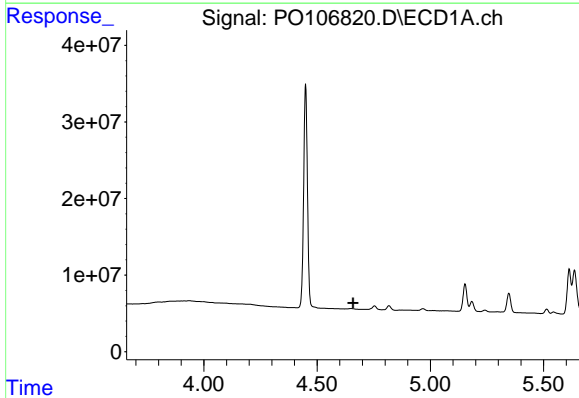
R.T.: 6.091 min  
 Delta R.T.: -0.004 min  
 Response: 102874001  
 Conc: 596.06 ng/ml

Instrument :  
 ECD\_O  
 ClientSampleId :  
 AR1248CCC500



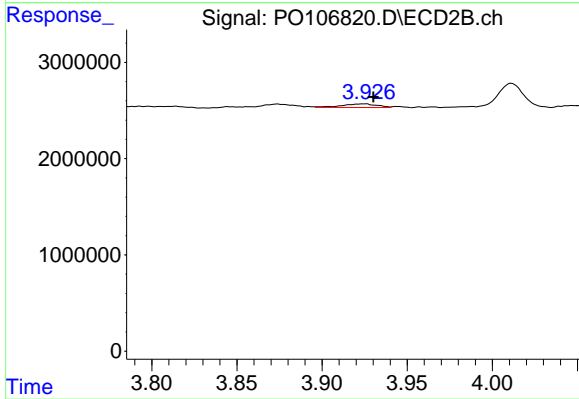
#7 AR-1016-5

R.T.: 5.249 min  
 Delta R.T.: -0.009 min  
 Response: 54293263  
 Conc: 760.03 ng/ml



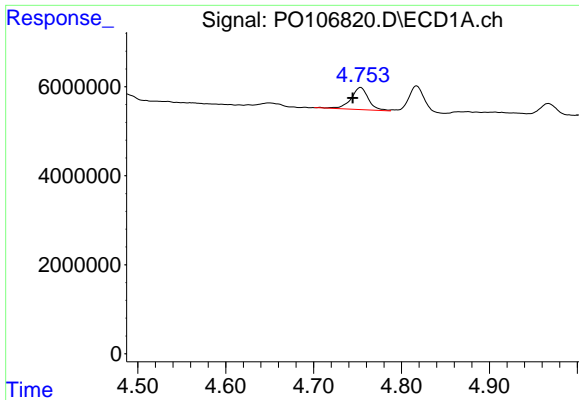
#8 AR-1221-1

R.T.: 0.000 min  
 Exp R.T. : 4.659 min  
 Response: 0  
 Conc: N.D.



#8 AR-1221-1

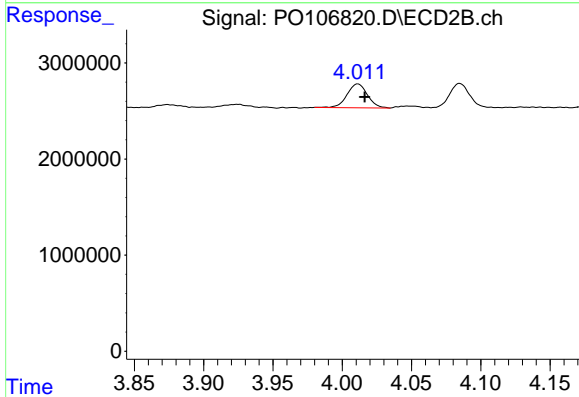
R.T.: 3.925 min  
 Delta R.T.: -0.005 min  
 Response: 548319  
 Conc: 18.13 ng/ml



#9 AR-1221-2

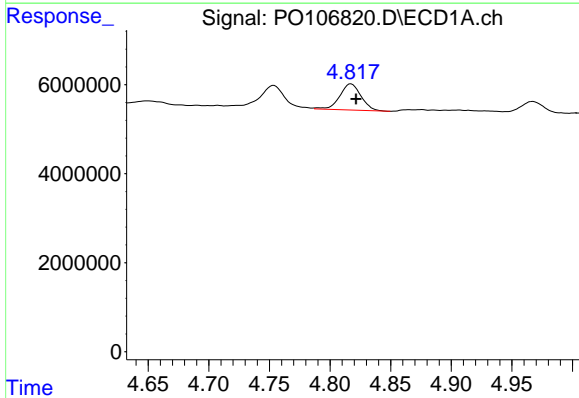
R.T.: 4.753 min  
 Delta R.T.: 0.009 min  
 Response: 6876666  
 Conc: 97.05 ng/ml

Instrument :  
 ECD\_O  
 ClientSampleId :  
 AR1248CCC500



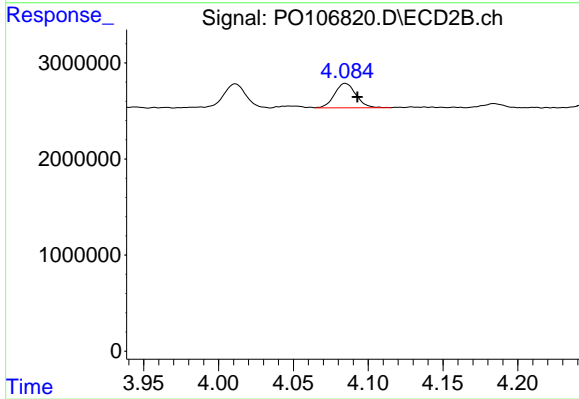
#9 AR-1221-2

R.T.: 4.011 min  
 Delta R.T.: -0.005 min  
 Response: 2536921  
 Conc: 112.07 ng/ml



#10 AR-1221-3

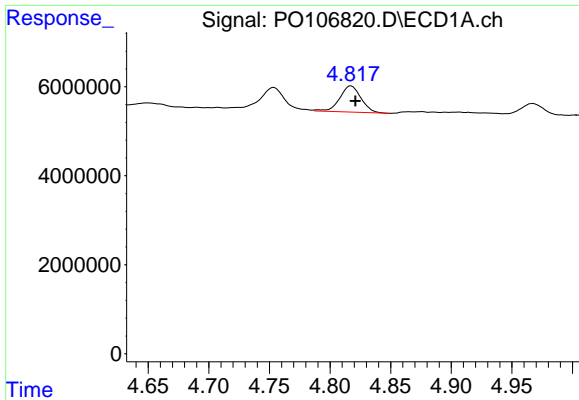
R.T.: 4.817 min  
 Delta R.T.: -0.004 min  
 Response: 7163119  
 Conc: 35.37 ng/ml



#10 AR-1221-3

R.T.: 4.085 min  
 Delta R.T.: -0.008 min  
 Response: 2531441  
 Conc: 35.64 ng/ml

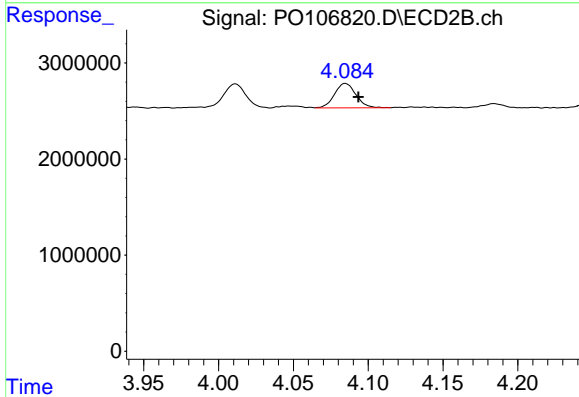




#11 AR-1232-1

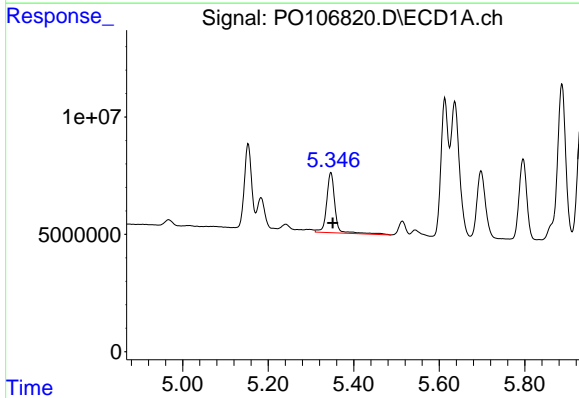
R.T.: 4.817 min  
 Delta R.T.: -0.004 min  
 Response: 7163119  
 Conc: 40.98 ng/ml

Instrument :  
 ECD\_O  
 ClientSampleId :  
 AR1248CCC500



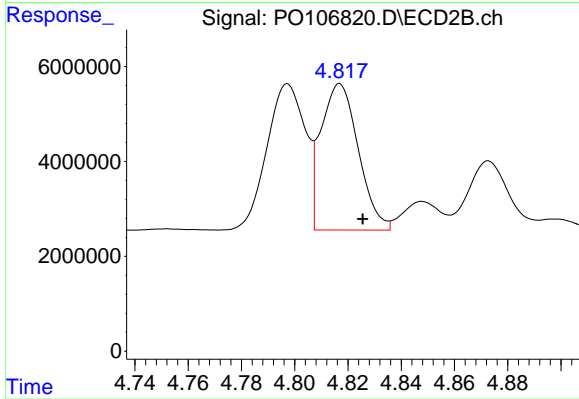
#11 AR-1232-1

R.T.: 4.085 min  
 Delta R.T.: -0.009 min  
 Response: 2531441  
 Conc: 41.93 ng/ml



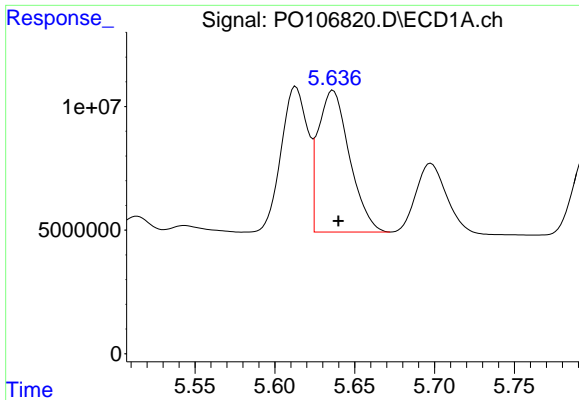
#12 AR-1232-2

R.T.: 5.347 min  
 Delta R.T.: -0.004 min  
 Response: 35202924  
 Conc: 377.39 ng/ml



#12 AR-1232-2

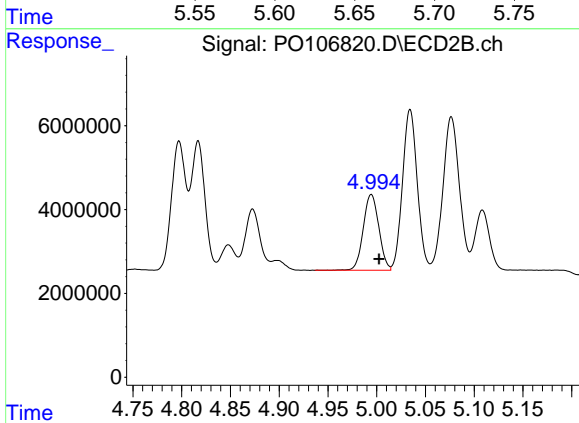
R.T.: 4.817 min  
 Delta R.T.: -0.009 min  
 Response: 30157440  
 Conc: 518.69 ng/ml



#13 AR-1232-3

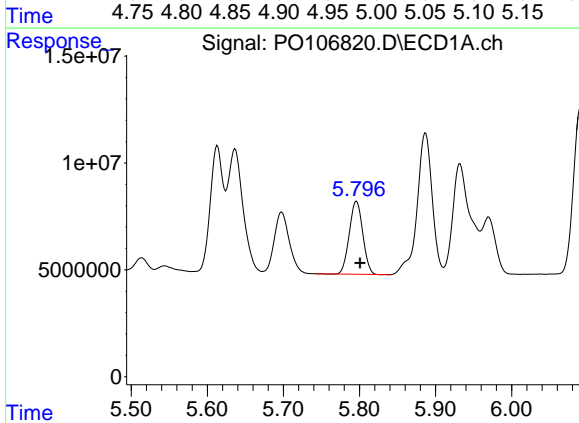
R.T.: 5.636 min  
 Delta R.T.: -0.003 min  
 Response: 78064167  
 Conc: 476.04 ng/ml

Instrument :  
 ECD\_O  
 ClientSampleId :  
 AR1248CCC500



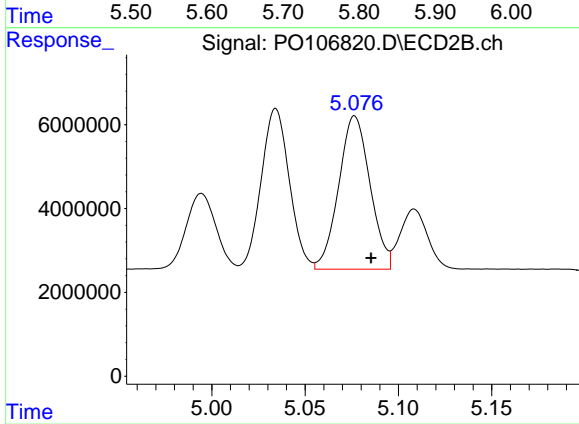
#13 AR-1232-3

R.T.: 4.994 min  
 Delta R.T.: -0.008 min  
 Response: 20141952  
 Conc: 646.56 ng/ml



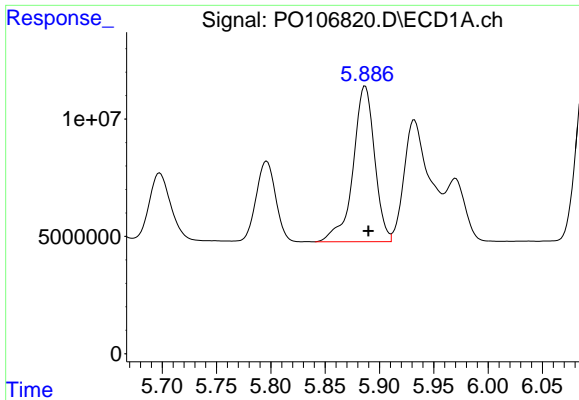
#14 AR-1232-4

R.T.: 5.796 min  
 Delta R.T.: -0.004 min  
 Response: 42047465  
 Conc: 510.58 ng/ml



#14 AR-1232-4

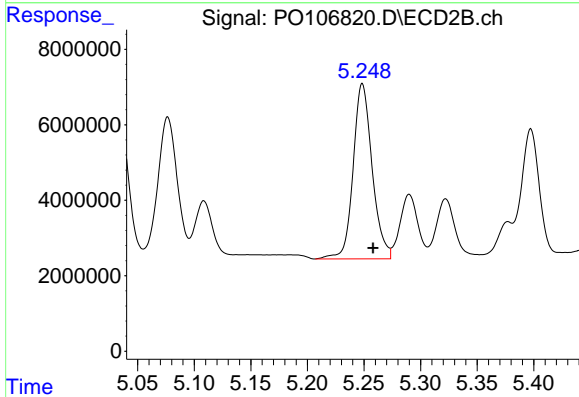
R.T.: 5.077 min  
 Delta R.T.: -0.009 min  
 Response: 42802877  
 Conc: 1566.22 ng/ml



#15 AR-1232-5

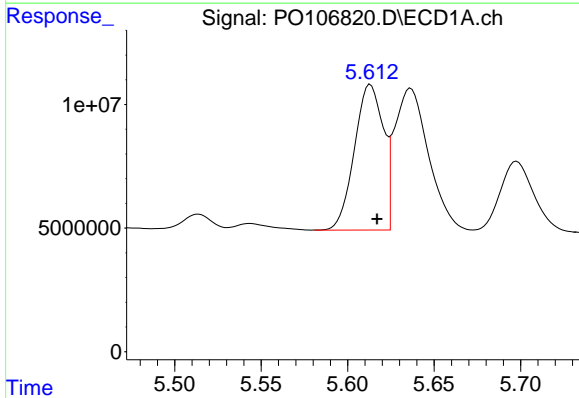
R.T.: 5.887 min  
 Delta R.T.: -0.003 min  
 Response: 91336970  
 Conc: 1438.61 ng/ml

Instrument :  
 ECD\_O  
 ClientSampleId :  
 AR1248CCC500



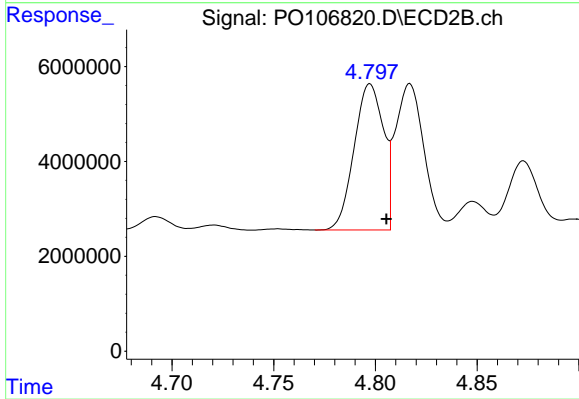
#15 AR-1232-5

R.T.: 5.249 min  
 Delta R.T.: -0.009 min  
 Response: 54293263  
 Conc: 1852.59 ng/ml



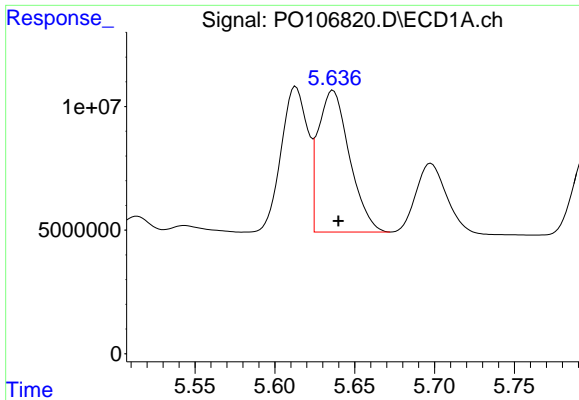
#16 AR-1242-1

R.T.: 5.613 min  
 Delta R.T.: -0.004 min  
 Response: 68183915  
 Conc: 340.40 ng/ml



#16 AR-1242-1

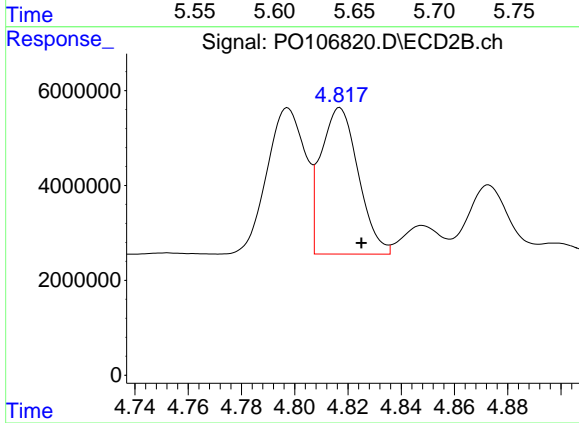
R.T.: 4.797 min  
 Delta R.T.: -0.008 min  
 Response: 30771519  
 Conc: 416.72 ng/ml



#17 AR-1242-2

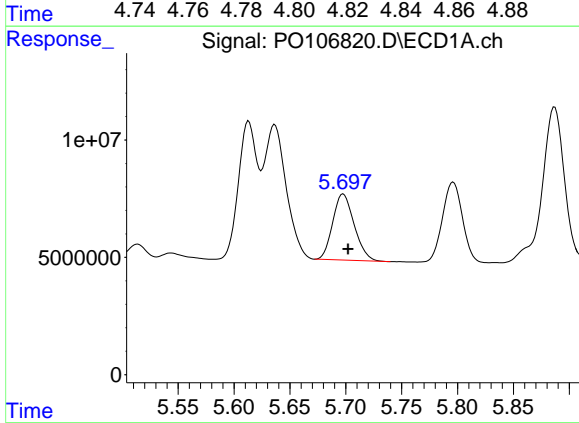
R.T.: 5.636 min  
 Delta R.T.: -0.003 min  
 Response: 78064167  
 Conc: 283.34 ng/ml

Instrument :  
 ECD\_O  
 ClientSampleId :  
 AR1248CCC500



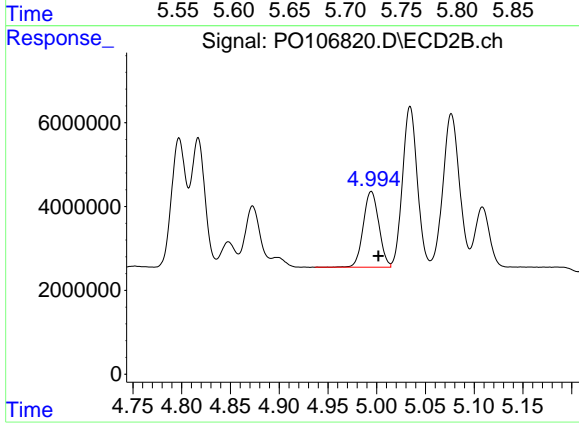
#17 AR-1242-2

R.T.: 4.817 min  
 Delta R.T.: -0.008 min  
 Response: 30157440  
 Conc: 308.11 ng/ml



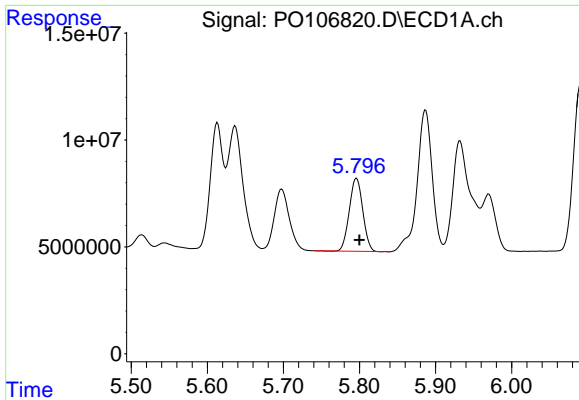
#18 AR-1242-3

R.T.: 5.698 min  
 Delta R.T.: -0.004 min  
 Response: 37485981  
 Conc: 218.53 ng/ml



#18 AR-1242-3

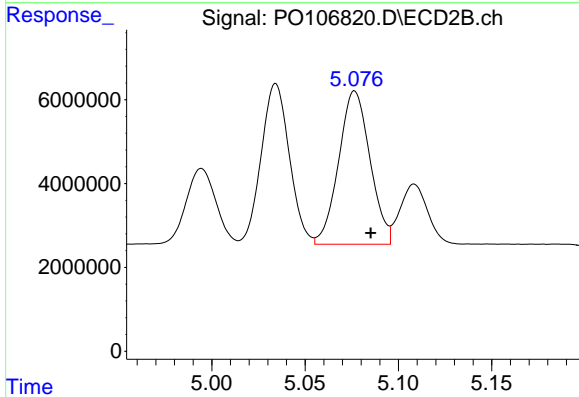
R.T.: 4.994 min  
 Delta R.T.: -0.007 min  
 Response: 20141952  
 Conc: 375.44 ng/ml



#19 AR-1242-4

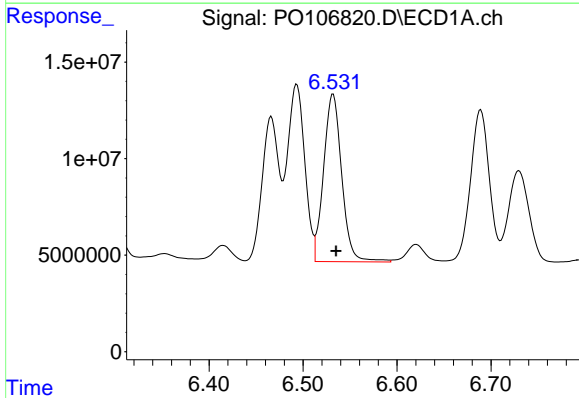
R.T.: 5.796 min  
 Delta R.T.: -0.004 min  
 Response: 42047465  
 Conc: 302.05 ng/ml

Instrument :  
 ECD\_O  
 ClientSampleId :  
 AR1248CCC500



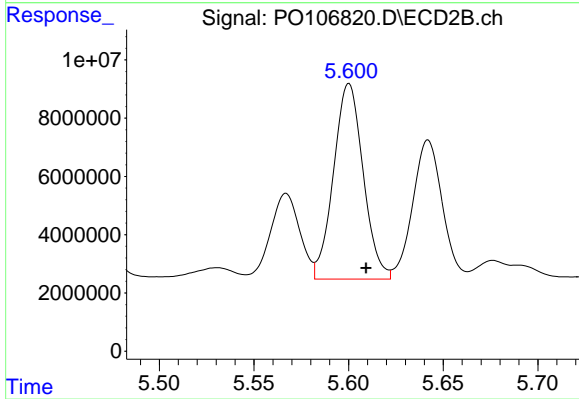
#19 AR-1242-4

R.T.: 5.077 min  
 Delta R.T.: -0.009 min  
 Response: 42802877  
 Conc: 807.01 ng/ml



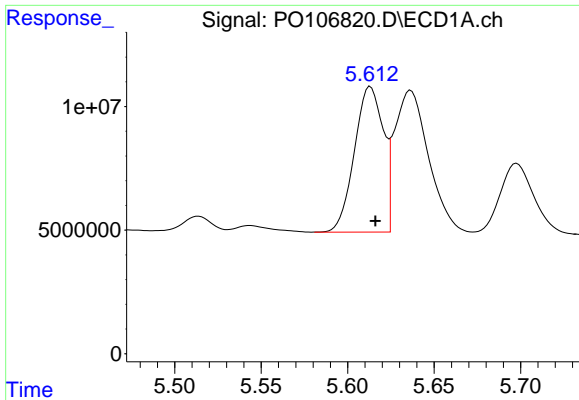
#20 AR-1242-5

R.T.: 6.532 min  
 Delta R.T.: -0.003 min  
 Response: 116114152  
 Conc: 834.88 ng/ml



#20 AR-1242-5

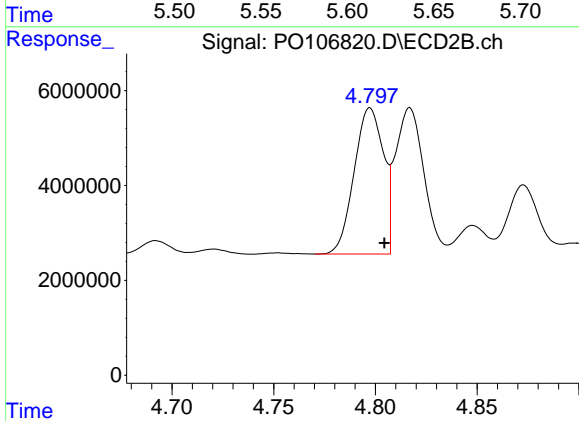
R.T.: 5.600 min  
 Delta R.T.: -0.009 min  
 Response: 73262316  
 Conc: 1048.97 ng/ml



#21 AR-1248-1

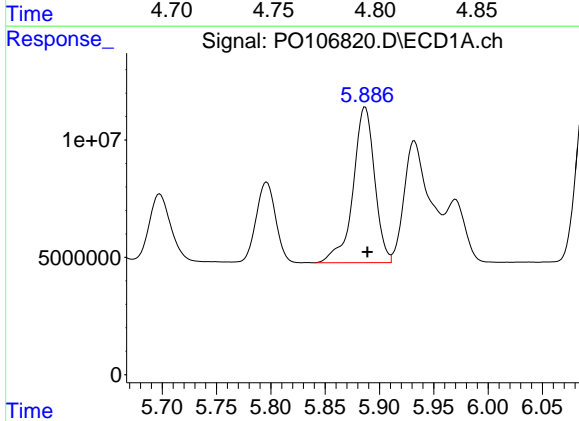
R.T.: 5.613 min  
 Delta R.T.: -0.003 min  
 Response: 68183915  
 Conc: 431.75 ng/ml

Instrument :  
 ECD\_O  
 ClientSampleId :  
 AR1248CCC500



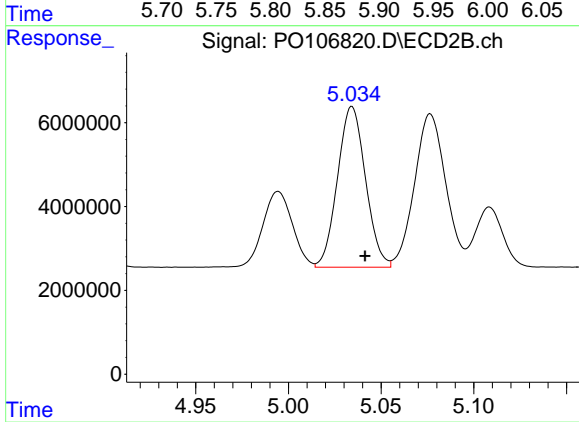
#21 AR-1248-1

R.T.: 4.797 min  
 Delta R.T.: -0.007 min  
 Response: 30771519  
 Conc: 531.89 ng/ml



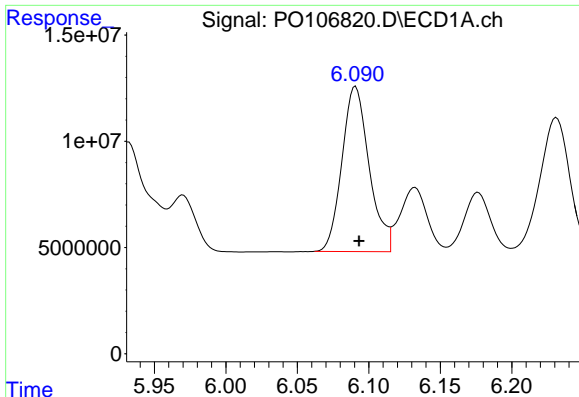
#22 AR-1248-2

R.T.: 5.887 min  
 Delta R.T.: -0.002 min  
 Response: 91336970  
 Conc: 421.05 ng/ml



#22 AR-1248-2

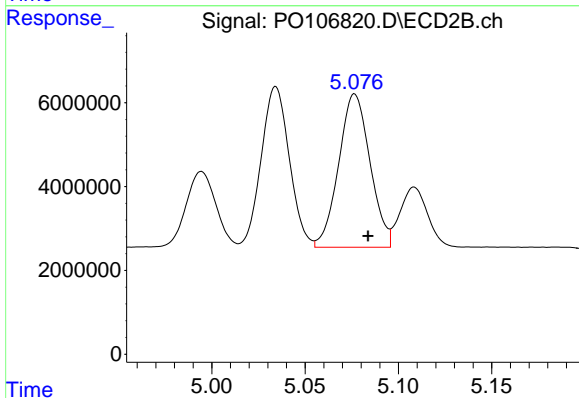
R.T.: 5.034 min  
 Delta R.T.: -0.007 min  
 Response: 40344102  
 Conc: 516.15 ng/ml



#23 AR-1248-3

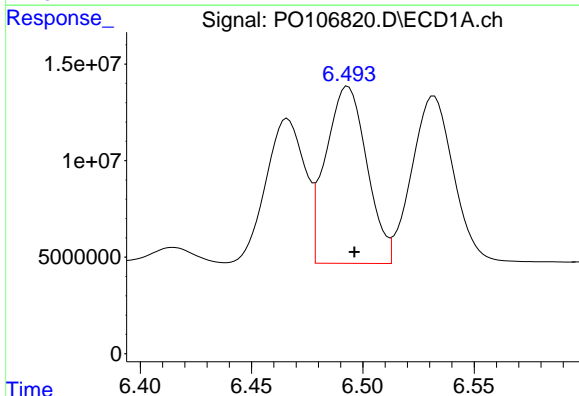
R.T.: 6.091 min  
 Delta R.T.: -0.002 min  
 Response: 102874001  
 Conc: 430.81 ng/ml

Instrument :  
 ECD\_O  
 ClientSampleId :  
 AR1248CCC500



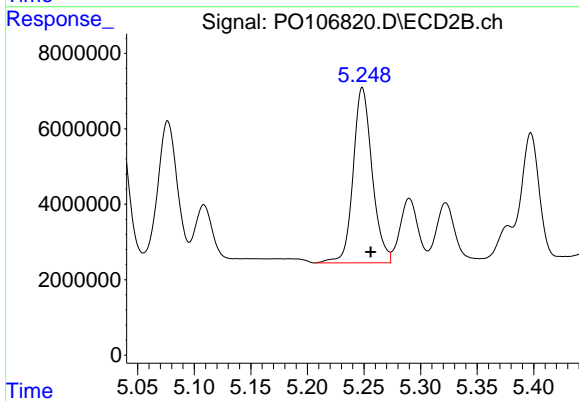
#23 AR-1248-3

R.T.: 5.077 min  
 Delta R.T.: -0.007 min  
 Response: 42802877  
 Conc: 520.79 ng/ml



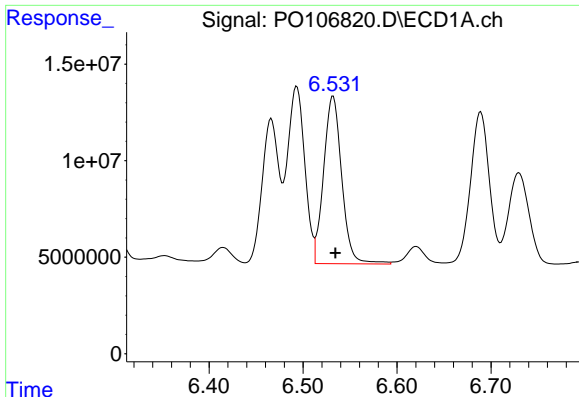
#24 AR-1248-4

R.T.: 6.493 min  
 Delta R.T.: -0.003 min  
 Response: 117673903  
 Conc: 448.13 ng/ml



#24 AR-1248-4

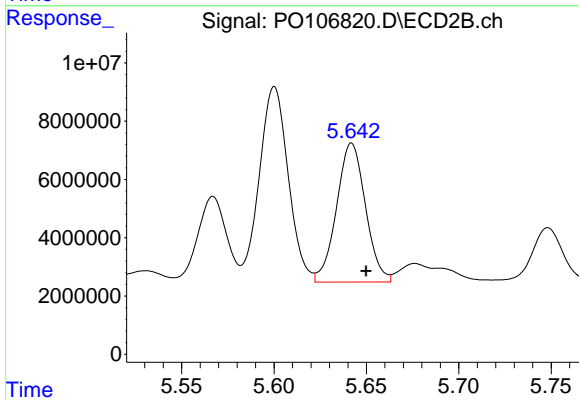
R.T.: 5.249 min  
 Delta R.T.: -0.008 min  
 Response: 54293263  
 Conc: 552.97 ng/ml



#25 AR-1248-5

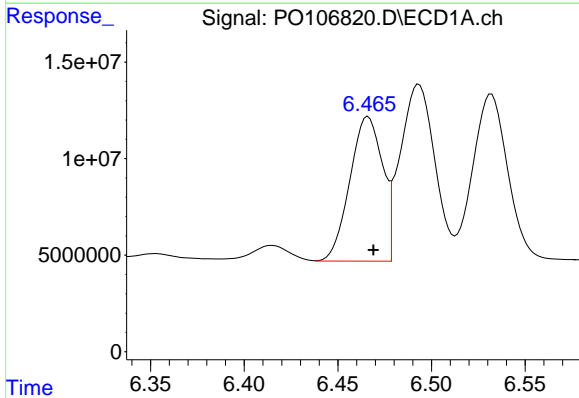
R.T.: 6.532 min  
 Delta R.T.: -0.003 min  
 Response: 116114152  
 Conc: 463.02 ng/ml

Instrument :  
 ECD\_O  
 ClientSampleId :  
 AR1248CCC500



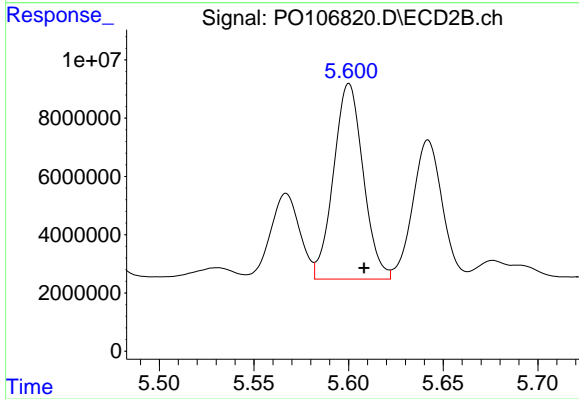
#25 AR-1248-5

R.T.: 5.642 min  
 Delta R.T.: -0.008 min  
 Response: 52012980  
 Conc: 537.02 ng/ml



#26 AR-1254-1

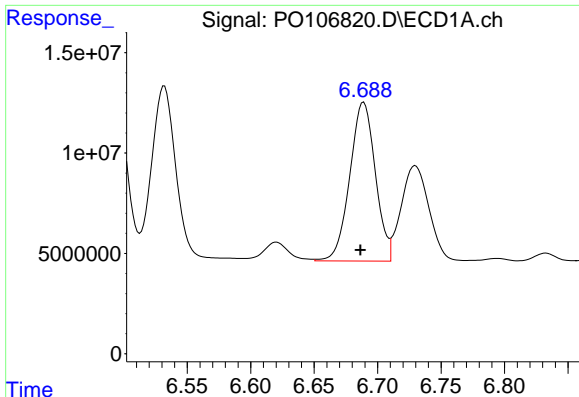
R.T.: 6.466 min  
 Delta R.T.: -0.003 min  
 Response: 90920516  
 Conc: 348.88 ng/ml



#26 AR-1254-1

R.T.: 5.600 min  
 Delta R.T.: -0.008 min  
 Response: 73262316  
 Conc: 520.12 ng/ml

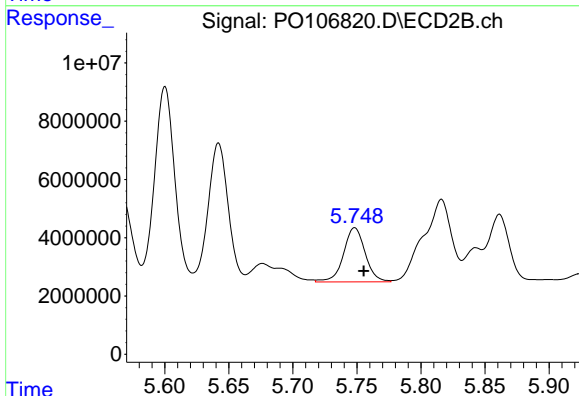




#27 AR-1254-2

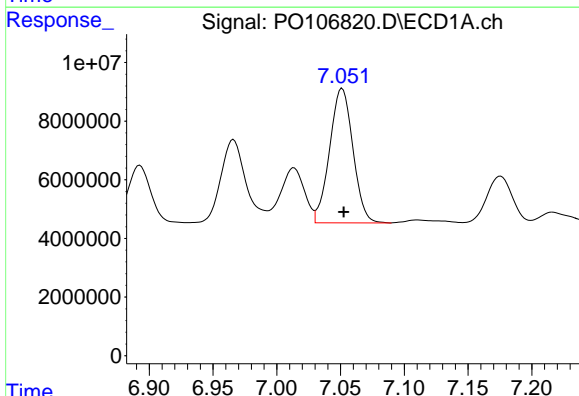
R.T.: 6.689 min  
 Delta R.T.: 0.003 min  
 Response: 110992134  
 Conc: 284.85 ng/ml

Instrument :  
 ECD\_O  
 ClientSampleId :  
 AR1248CCC500



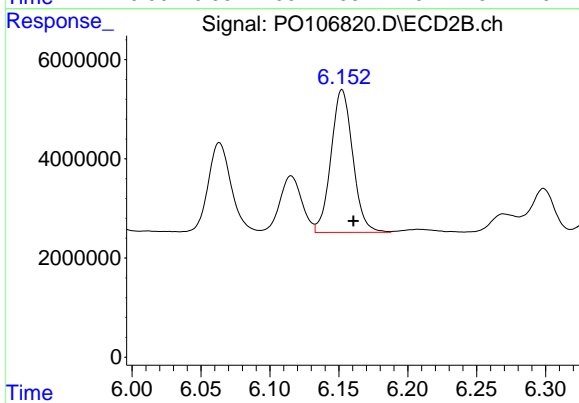
#27 AR-1254-2

R.T.: 5.748 min  
 Delta R.T.: -0.007 min  
 Response: 21882326  
 Conc: 171.75 ng/ml



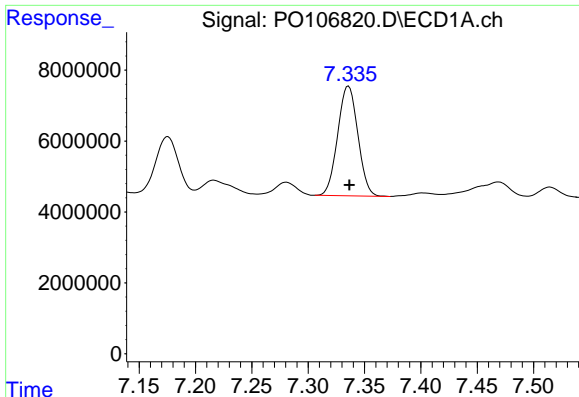
#28 AR-1254-3

R.T.: 7.051 min  
 Delta R.T.: -0.001 min  
 Response: 58563965  
 Conc: 150.20 ng/ml



#28 AR-1254-3

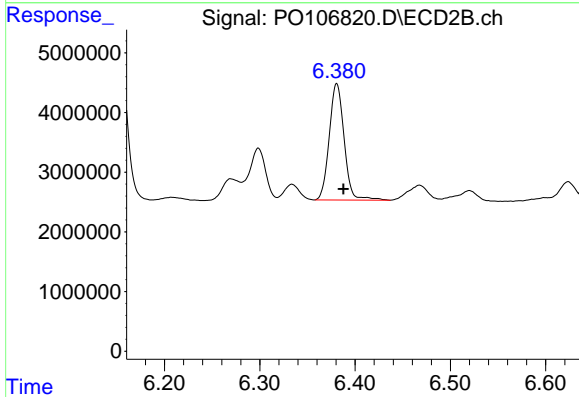
R.T.: 6.152 min  
 Delta R.T.: -0.008 min  
 Response: 31572516  
 Conc: 156.82 ng/ml



#29 AR-1254-4

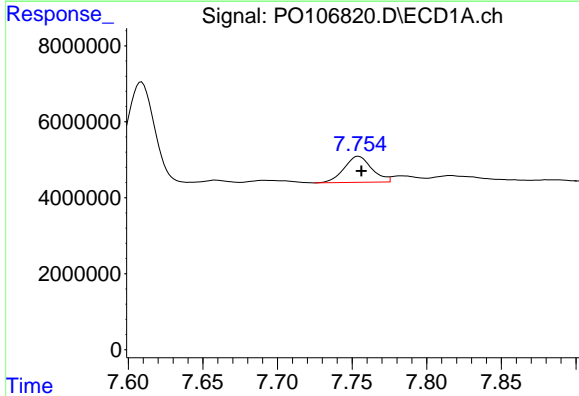
R.T.: 7.336 min  
 Delta R.T.: -0.001 min  
 Response: 38551123  
 Conc: 132.67 ng/ml

Instrument :  
 ECD\_O  
 ClientSampleId :  
 AR1248CCC500



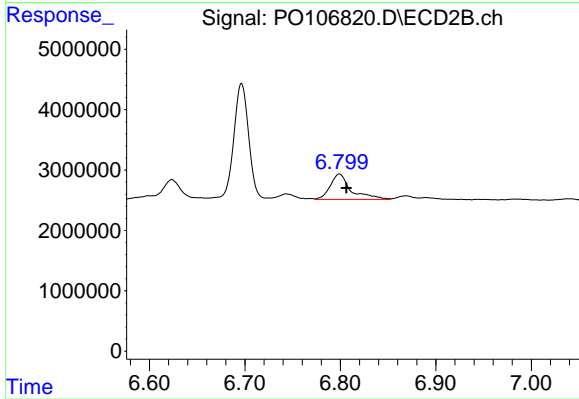
#29 AR-1254-4

R.T.: 6.381 min  
 Delta R.T.: -0.007 min  
 Response: 21191178  
 Conc: 170.29 ng/ml



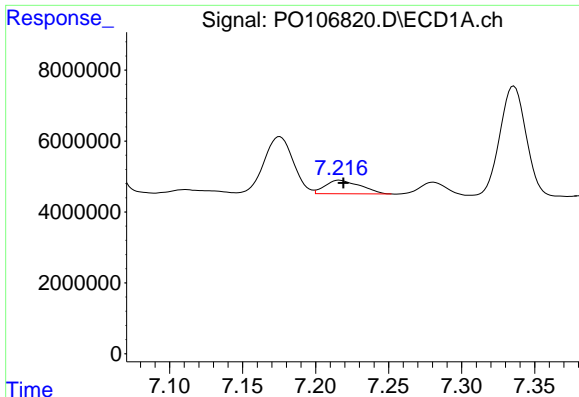
#30 AR-1254-5

R.T.: 7.754 min  
 Delta R.T.: -0.002 min  
 Response: 8866332  
 Conc: 29.13 ng/ml



#30 AR-1254-5

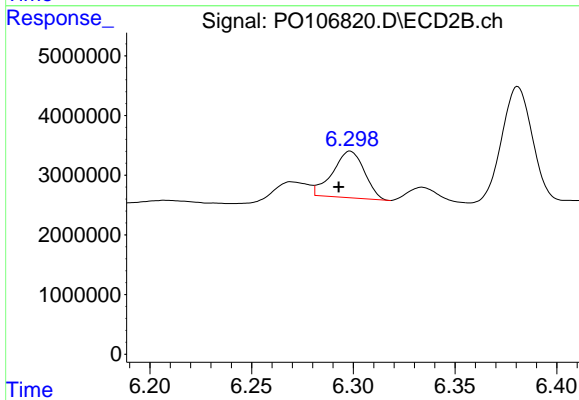
R.T.: 6.799 min  
 Delta R.T.: -0.007 min  
 Response: 6383657  
 Conc: 35.64 ng/ml



#31 AR-1260-1

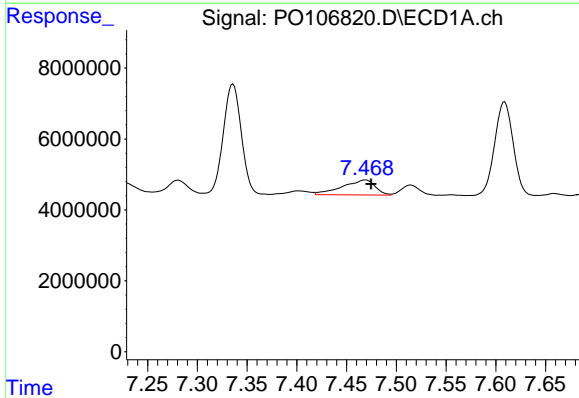
R.T.: 7.217 min  
 Delta R.T.: -0.003 min  
 Response: 6124744  
 Conc: 21.71 ng/ml

Instrument :  
 ECD\_O  
 ClientSampleId :  
 AR1248CCC500



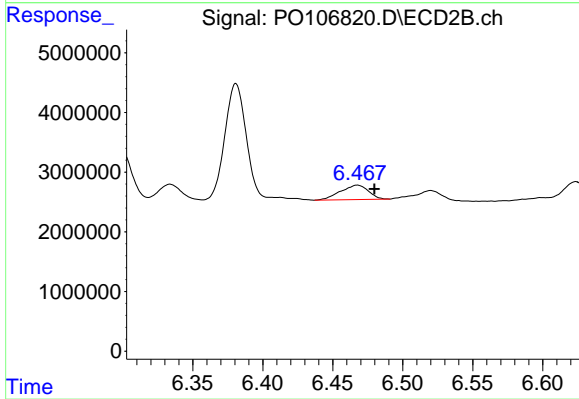
#31 AR-1260-1

R.T.: 6.298 min  
 Delta R.T.: 0.006 min  
 Response: 8486471  
 Conc: 65.62 ng/ml



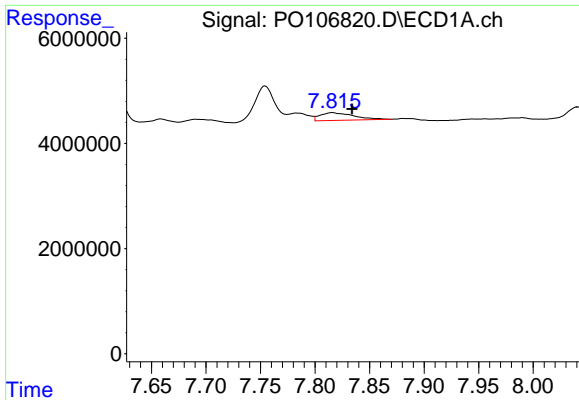
#32 AR-1260-2

R.T.: 7.469 min  
 Delta R.T.: -0.006 min  
 Response: 9687649  
 Conc: 29.04 ng/ml



#32 AR-1260-2

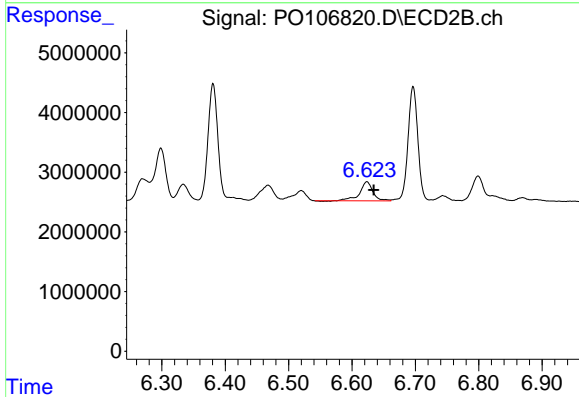
R.T.: 6.468 min  
 Delta R.T.: -0.012 min  
 Response: 3353368  
 Conc: 21.13 ng/ml



#33 AR-1260-3

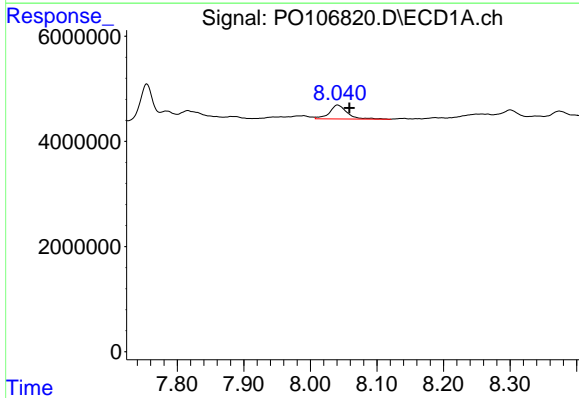
R.T.: 7.816 min  
 Delta R.T.: -0.018 min  
 Response: 3164425  
 Conc: 14.02 ng/ml

Instrument :  
 ECD\_O  
 ClientSampleId :  
 AR1248CCC500



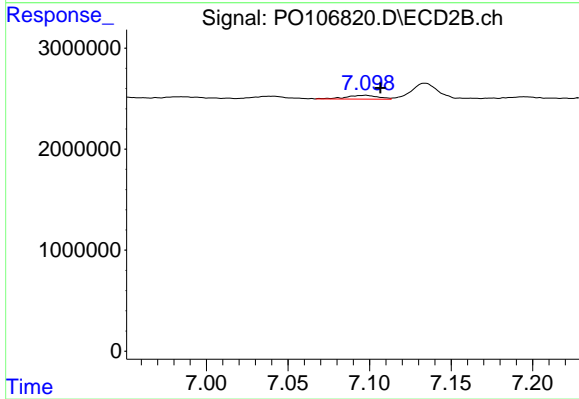
#33 AR-1260-3

R.T.: 6.624 min  
 Delta R.T.: -0.011 min  
 Response: 4684558  
 Conc: 30.37 ng/ml



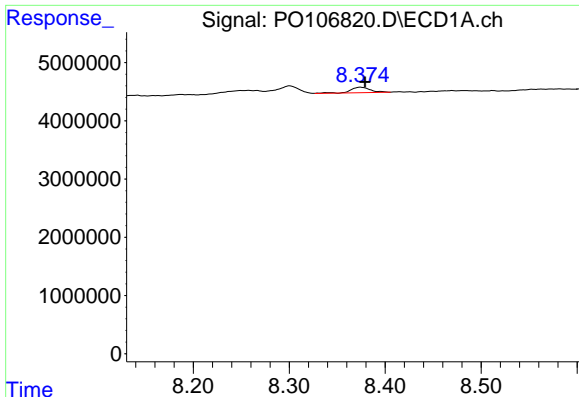
#34 AR-1260-4

R.T.: 8.041 min  
 Delta R.T.: -0.018 min  
 Response: 4919238  
 Conc: 17.78 ng/ml



#34 AR-1260-4

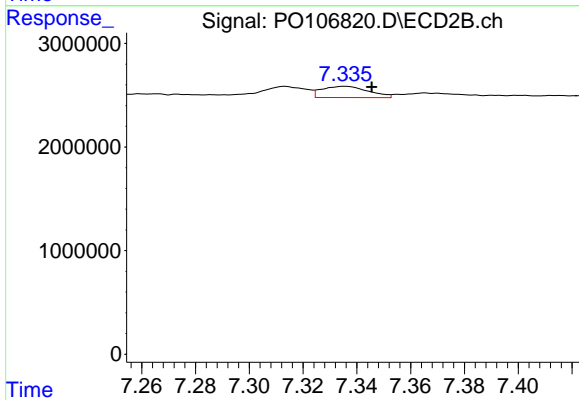
R.T.: 7.098 min  
 Delta R.T.: -0.009 min  
 Response: 532526  
 Conc: 5.01 ng/ml



#35 AR-1260-5

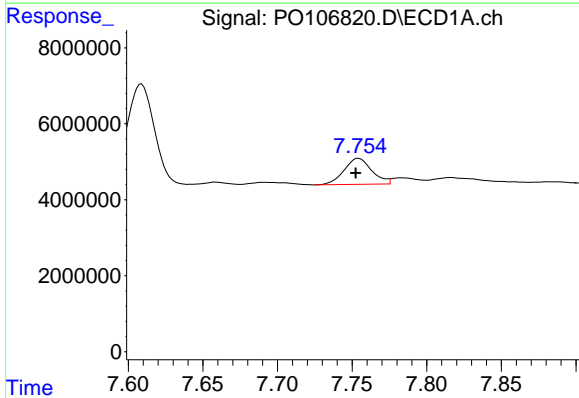
R.T.: 8.375 min  
 Delta R.T.: -0.005 min  
 Response: 1386858  
 Conc: 2.81 ng/ml

Instrument :  
 ECD\_O  
 ClientSampleId :  
 AR1248CCC500



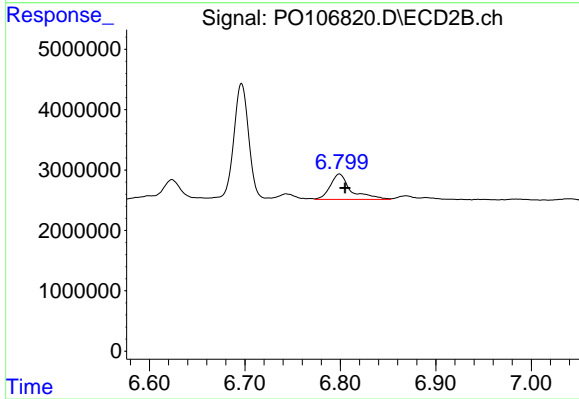
#35 AR-1260-5

R.T.: 7.335 min  
 Delta R.T.: -0.010 min  
 Response: 1306572  
 Conc: 5.08 ng/ml



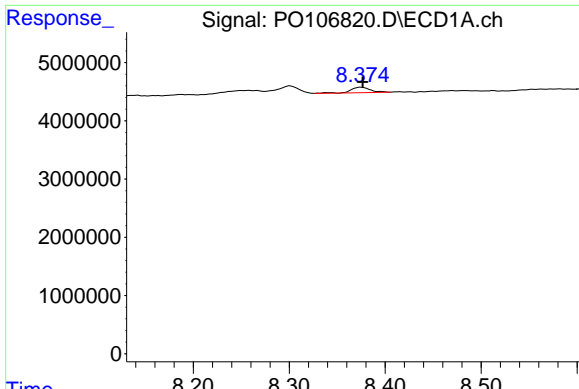
#36 AR-1262-1

R.T.: 7.754 min  
 Delta R.T.: 0.002 min  
 Response: 8866332  
 Conc: 36.12 ng/ml



#36 AR-1262-1

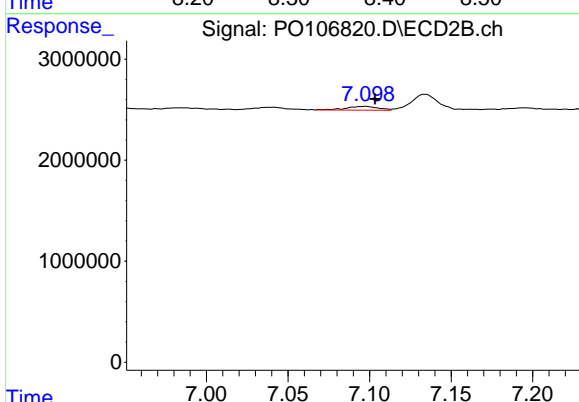
R.T.: 6.799 min  
 Delta R.T.: -0.006 min  
 Response: 6383657  
 Conc: 64.94 ng/ml



#37 AR-1262-2

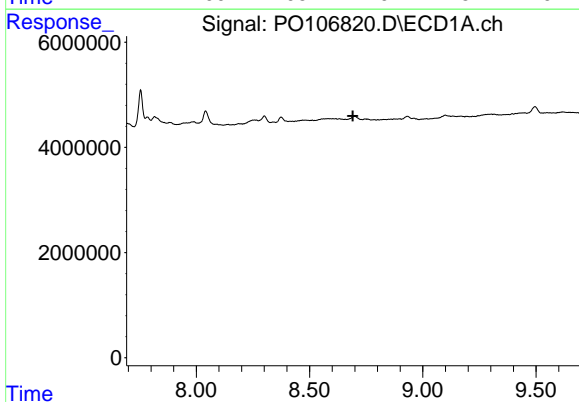
R.T.: 8.375 min  
 Delta R.T.: -0.002 min  
 Response: 1386858  
 Conc: 2.20 ng/ml

Instrument : ECD\_O  
 ClientSampleId : AR1248CCC500



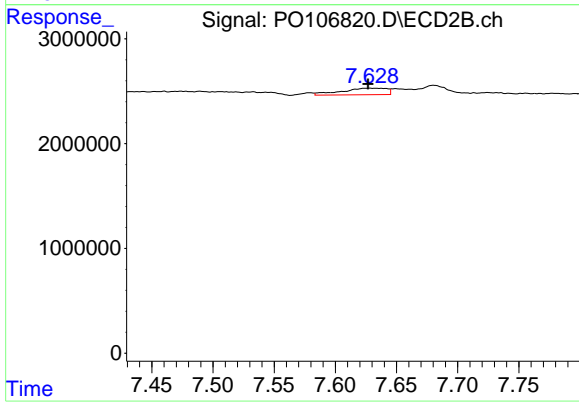
#37 AR-1262-2

R.T.: 7.098 min  
 Delta R.T.: -0.006 min  
 Response: 532526  
 Conc: 3.39 ng/ml



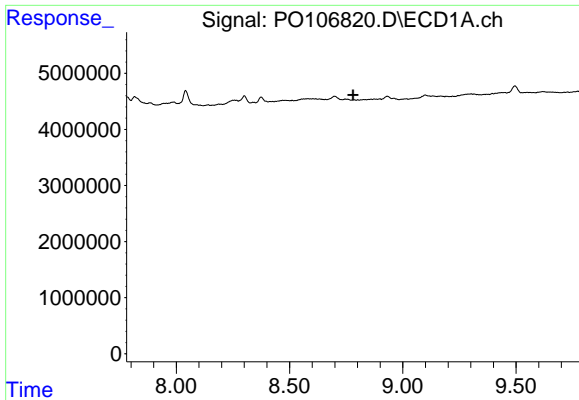
#38 AR-1262-3

R.T.: 0.000 min  
 Exp R.T. : 8.691 min  
 Response: 0  
 Conc: N.D.



#38 AR-1262-3

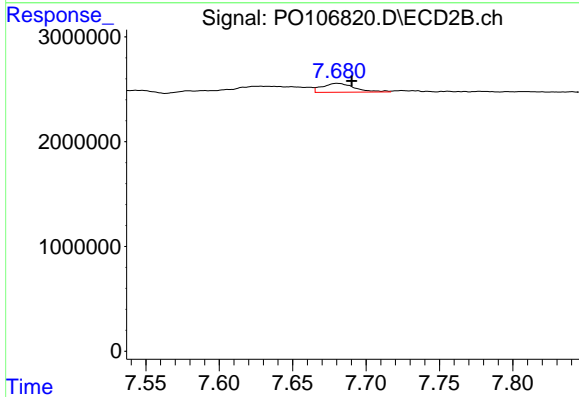
R.T.: 7.627 min  
 Delta R.T.: 0.000 min  
 Response: 1624695  
 Conc: 13.35 ng/ml



#39 AR-1262-4

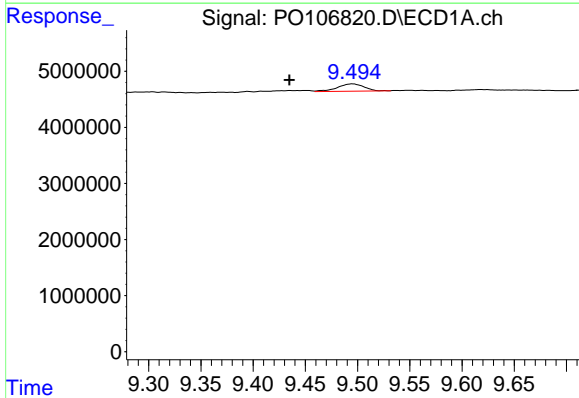
R.T.: 0.000 min  
 Exp R.T.: 8.780 min  
 Response: 0  
 Conc: N.D.

Instrument :  
 ECD\_O  
 ClientSampleId :  
 AR1248CCC500



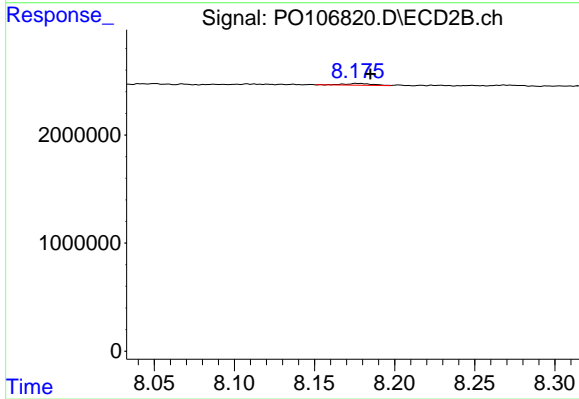
#39 AR-1262-4

R.T.: 7.681 min  
 Delta R.T.: -0.010 min  
 Response: 1317077  
 Conc: 5.58 ng/ml



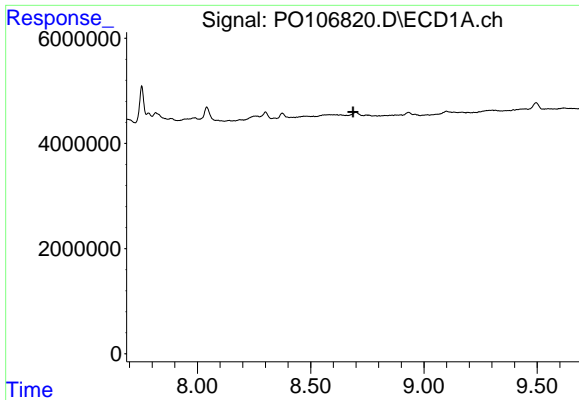
#40 AR-1262-5

R.T.: 9.495 min  
 Delta R.T.: 0.060 min  
 Response: 2344609  
 Conc: 10.03 ng/ml



#40 AR-1262-5

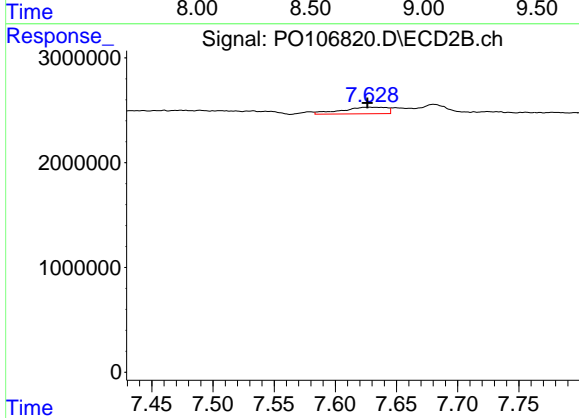
R.T.: 8.177 min  
 Delta R.T.: -0.008 min  
 Response: 187843  
 Conc: 1.80 ng/ml



#41 AR-1268-1

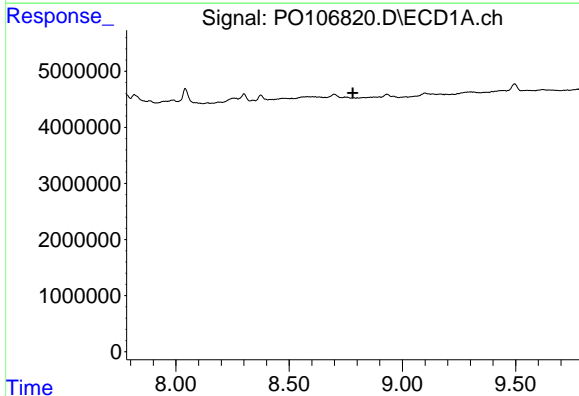
R.T.: 0.000 min  
 Exp R.T.: 8.687 min  
 Response: 0  
 Conc: N.D.

Instrument :  
 ECD\_O  
 ClientSampleId :  
 AR1248CCC500



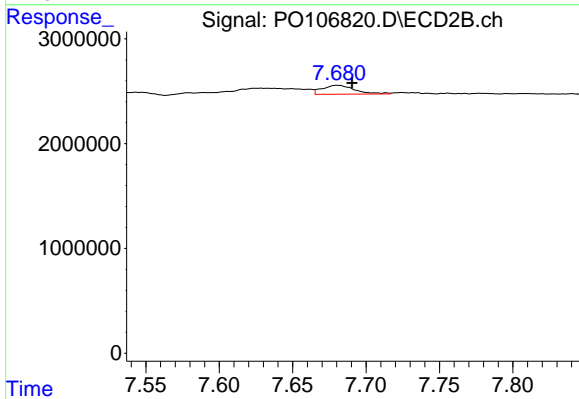
#41 AR-1268-1

R.T.: 7.627 min  
 Delta R.T.: 0.000 min  
 Response: 1624695  
 Conc: 4.50 ng/ml



#42 AR-1268-2

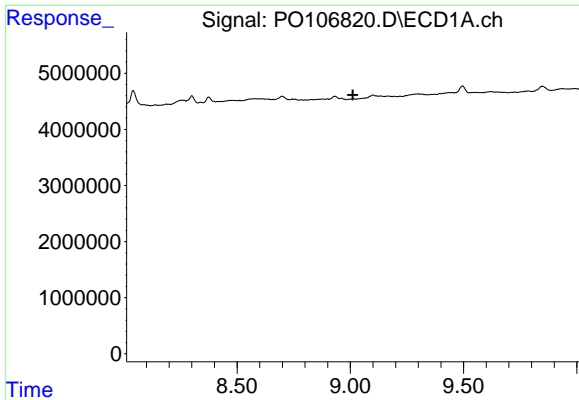
R.T.: 0.000 min  
 Exp R.T.: 8.781 min  
 Response: 0  
 Conc: N.D.



#42 AR-1268-2

R.T.: 7.681 min  
 Delta R.T.: -0.010 min  
 Response: 1317077  
 Conc: 4.03 ng/ml

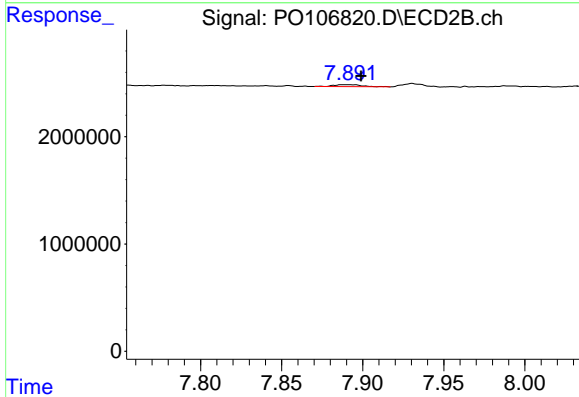




#43 AR-1268-3

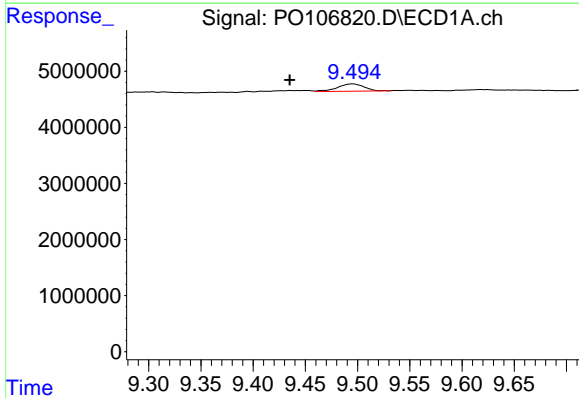
R.T.: 0.000 min  
 Exp R.T.: 9.011 min  
 Response: 0  
 Conc: N.D.

Instrument :  
 ECD\_O  
 ClientSampleId :  
 AR1248CCC500



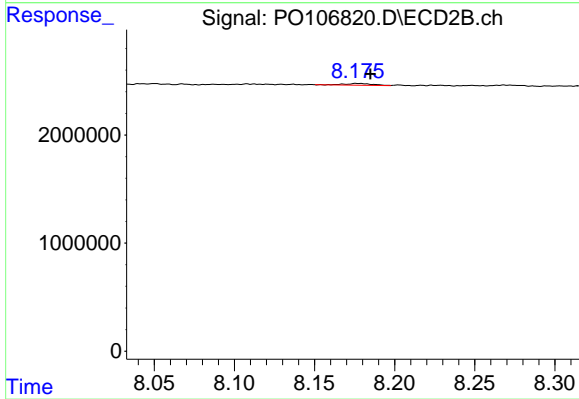
#43 AR-1268-3

R.T.: 7.890 min  
 Delta R.T.: -0.009 min  
 Response: 225496  
 Conc: 0.84 ng/ml



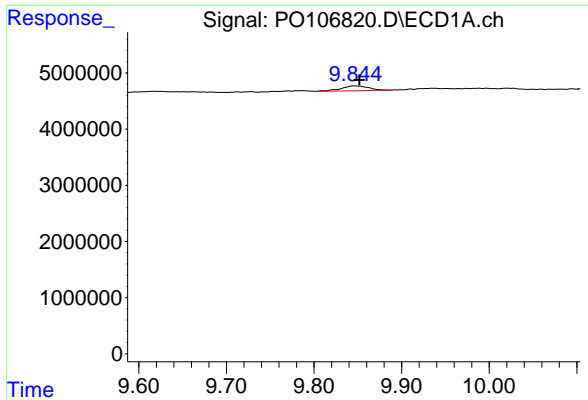
#44 AR-1268-4

R.T.: 9.495 min  
 Delta R.T.: 0.060 min  
 Response: 2344609  
 Conc: 9.48 ng/ml



#44 AR-1268-4

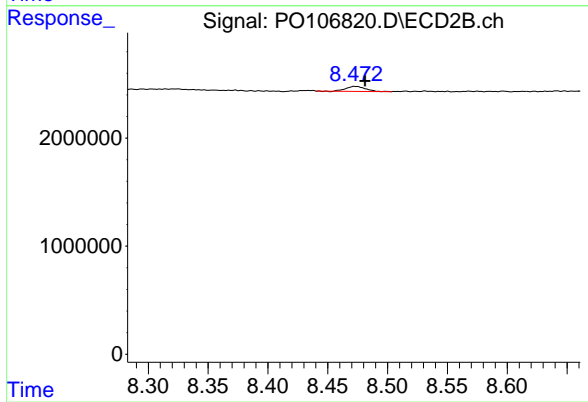
R.T.: 8.177 min  
 Delta R.T.: -0.008 min  
 Response: 187843  
 Conc: 1.65 ng/ml



#45 AR-1268-5

R.T.: 9.847 min  
Delta R.T.: -0.005 min  
Response: 1844155  
Conc: 1.00 ng/ml

Instrument :  
ECD\_O  
ClientSampleId :  
AR1248CCC500



#45 AR-1268-5

R.T.: 8.473 min  
Delta R.T.: -0.008 min  
Response: 544643  
Conc: 0.65 ng/ml